



MARY R KOCH ARTS CENTER

1307 N. ROCK ROAD
WICHITA, KS 67206

JULY 26, 2016
SUBMITTAL 3: BUILDING SHELL & ENGINEERED EQUIPMENT
ADDENDUM 3-02

PHASE
SUBMITTAL 3: BUILDING SHELL &
ENGINEERED EQUIPMENT

DATE
JULY 1, 2016

ADDENDUM 3-02
JULY 26, 2016



3500 north rock road
bldg. 500 wichita, ks 67226
316.634.1111 (p) 316.634.1016 (f)

project no.
15205.00

The drawing and all information herein is the exclusive property of Howard & Helmer Architects, P.A., and is not to be copied or used in any way without the express written consent of Howard & Helmer Architects, P.A. All drawings, specifications, sheets, designs and arrangements appearing herein constitute the original and copyrighted work of the artist.

Copyright © 2016
Howard & Helmer
Architects, P.A.

MARY R KOCH ARTS CENTER

1307 N. ROCK ROAD
WICHITA, KS 67206
FORMERLY WICHITA CENTER FOR THE ARTS



HOWARD+HELMER
architecture

www.howardandhelmer.com

3500 north rock road, bldg. 500
wichita, kansas 67226
316.634.1111 (p) 316.634.1016 (f)

sheet

A0.1

PROPERTY LEGAL DESCRIPTION
LOT 1, BLOCK 1 OF FAIRFIELD ESTATES, WICHITA, SEDGWICK COUNTY, KS.



PROJECT LOCATION MAP
N15

MATERIALS SYMBOLS

	ACOUSTICAL		METAL
	BRICK		TILE
	CONCRETE		SAND
	CONC. MASONRY UNIT		WOOD FINISH
	WOOD, FRAMING (CONTINUOUS)		WOOD, FRAMING (INTERRUPTED)
	GRAVEL		PLYWOOD
	EARTH		RIGID INSULATION
	GYPSUM BOARD		
	BATT INSULATION		

SYMBOL LEGEND

DRAWING TITLES:		TITLE
		SCALE
WALL SECTIONS:		DETAIL #
		SHEET #
ELEVATIONS:		ELEVATION #
		SHEET #
DOOR NOTATION:		DOOR TYPE
		HARDWARE
ELEVATION MARK:		EL. 8'-0" A.F.F.
ROOM NOTATION:		OPEN OFFICE
CONSTRUCTION NOTE:		
ROOM FINISH NOTATION:		CEILING HEIGHT: FLOOR SURFACE - [C] A [P]
		CEILING TYPE
REVISION:		
COLUMN GRID LOCATION:		5.1
EXISTING WALL:		
EXISTING WALL TO BE DEMOLISHED:		
NORTH ARROW:		

ABBREVIATIONS

AB anchor bolt	CLG ceiling	EC electrical contractor	H(T) high (height)	NA not applicable	REV revised/revision/	W/ with
ABV above	CLO closet	EJ expansion joint	ID inside diameter	NIC not in contract	reverse	WC water closet/wall covering
AC acoustical ceiling	CLR clear	EL elevation	IN (") inch	NO number	RM room	WD wood
A/C air conditioning	CMU concrete masonry unit	ELC electric(al)	INSUL insulation	NOM nominal	RO rough opening	W/W window
ADJ adjustable/adjacent	CO clean out/clear opng	ENT entrance	INT interior	NTS not to scale	RS(C) rough sawn (cedar)	W/O without
ADF above finish floor	COL column	EQ equip	JNT joint	OA overall	SEC section	WT weight
ALUM aluminum	CONC concrete	EQUIP equipment	KIT kitchen	OC on center(s)	SF square foot	WWF welded wire fabric
ALT alternate	COND condition/condenser	EXIST existing	L long/length	OD outside diameter	SHT sheet	YD yard
ANCH anchor	CONT continue/continuous	EXT exterior	LAV lavatory	OPNG opening	SM similar	
APPROX approximate	CTR counter/center	F fahrenheit/face	LB pound	OPP opposite	SPEC specification	
ARCH architect(ural)	CU cubic	FA fresh air/fire alarm	LF linear foot	PL plate/property line	SQ square	
BD board	DI diameter	FDN foundation	LLH long leg horizontal	P LAM plastic laminate	STD standard	
BLDG building	D deep/depth	FN finish	LLV long leg vertical	PLB plumbing	STL steel	
BLW below	DR drinking fountain	FTC footing	MAS masonry	PLF pounds per linear ft.	STNLS stainless steel	
BM bench/bench mark	DI diameter	FT (') foot	MAT material	PND plywood	STR structural/structure	
BURT built-up roofing	DN down	FT (') foot	MAX maximum	PNL pane(ng)	ST square yard	
CAB cabinet	DS downspout	GA gage/gauge	MC mechanical contractor	PSF pounds per sq ft	SYM symmetrical	
C/C center to center	DS downspout	GC general contractor	MECH mechanical	PSI pounds per sq in.	T&G tongue and groove	
CF cubic feet	DW drawing	HDDB hard board	MFR manufacture(r)	PVC polyvinyl chloride	THK thick(ness)	
CJ construction joint	DW drawing	HDW hardware	MIS miscellaneous	RA(O) return air (grill)	TYP typical	
CL center line	CL center line	HM hollow metal	MO masonry opening	RD roof drain	VERT vertical	
		EB expansion bolt	MTD mounted	REQ required	VEST vestibule	
			HORIZ horizontal		W wide/width	

DRAWING INDEX

A003-00 COVER		ARCHITECTURAL (CONT)
GENERAL		A61 FINISH FLOOR PLAN (INFO)
A003-01 GLOD CODE PLAN		A62 FINISH FLOOR PLAN (INFO)
GENERAL		A63 DOOR AND WINDOW SCHEDULE
A003-02 C01 SITE SURVEY		A64 DOOR AND WINDOW SCHEDULE
A003-02 C02 SITE UTILITY PLAN		A65 DOOR AND WINDOW DETAILS
A003-02 C03 OVERALL GRADING PLAN		A66 DOOR AND WINDOW DETAILS
A003-02 C04 GRADING PLAN		A67 ROOF DETAILS
A003-02 C05 GRADING PLAN		A68 ROOF DETAILS
A003-02 C06 GRADING PLAN		A69 ROOF DETAILS
A003-02 C07 FINISH GRADING DETAIL		A70 ROOF DETAILS
A003-02 C08 ENTRANCE CIRCLE GRADING DETAIL		A71 ROOF DETAILS
A003-02 C09 COPY OF PLAN		A72 ROOF DETAILS
A003-02 C21 MISCELLANEOUS SITE DETAILS		A73 ROOF DETAILS
A003-02 C22 SITE DETAILS: RR/RAMP AND ENTRY DETAILS		A74 ROOF DETAILS
A003-02 C30 FINISH FLOOR SHEET		A75 ROOF DETAILS
A003-02 C31 FINISH FLOOR SHEET		A76 ROOF DETAILS
A003-02 C32 FIRE SERVICE LINE NO.1		A77 ROOF DETAILS
A003-02 C33 FIRE SERVICE LINE NO.1 AND LINE NO.2		A78 ROOF DETAILS
A003-02 C34 FIRE SERVICE LINE NO.3		A79 ROOF DETAILS
A003-02 C35 FIRE SERVICE LINE NO.3		A80 ROOF DETAILS
A003-02 C36 STANDARD WATER ASSEMBLY DETAILS		A81 ROOF DETAILS
A003-02 C37 STANDARD WATER SERVICE DETAILS		A82 ROOF DETAILS
A003-02 C38 MISCELLANEOUS WATER DETAILS		A83 ROOF DETAILS
A003-02 C39 STANDARD VAULT DETAILS		A84 ROOF DETAILS
A003-02 C41 PHOTO SHEET		A85 ROOF DETAILS
A003-02 C42 PHOTO SHEET		A86 ROOF DETAILS
A003-02 C43 SWIS LINE NO. 1		A87 ROOF DETAILS
A003-02 C44 SWIS LINE NO. 2		A88 ROOF DETAILS
A003-02 C45 SWIS LINE NO. 3		A89 ROOF DETAILS
A003-02 C46 SWIS LINE NO. 3A & 4		A90 ROOF DETAILS
A003-02 C47 SWIS LINE NO. 5		A91 ROOF DETAILS
A003-02 C48 STANDARD TYPIA CURB INLET		A92 ROOF DETAILS
A003-02 C49 SINGLE DOUBLE DRIP INLET		A93 ROOF DETAILS
A003-02 C41 PRECAST CONCRETE MANHOLE		A94 ROOF DETAILS
A003-02 C42 MANHOLE INLET FRAMES AND COVER		A95 ROOF DETAILS
A003-02 C43 HEADWALL DETAILS: 18" AND 24" PIPE		A96 ROOF DETAILS
A003-02 C44 HEADWALL DETAILS: 30" AND 36" PIPE		A97 ROOF DETAILS
A003-02 C45 HEADWALL WITH SOIL SAVER		A98 ROOF DETAILS
A003-02 C46 HEADWALL DETAILS: 30"-36" PIPE		A99 ROOF DETAILS
A003-02 C51 PHOTO SHEET		A003-01 P11 MECHANICAL TITLE SHEET
A003-02 C52 PHOTO SHEET		A003-01 P12 PLUMBING FLOOR PLAN - AREA A UNDER SLAB
A003-02 C53 SANITARY SEWER LINE NO.1		A003-01 P13 PLUMBING FLOOR PLAN - AREA B UNDER SLAB
A003-02 C54 PRECAST SANITARY SEWER MANHOLE		A003-01 P14 PLUMBING FLOOR PLAN - AREA A
A003-02 C55 MANHOLE FRAME AND COVER		A003-01 P15 PLUMBING FLOOR PLAN - AREA B
A003-02 C51 EROSION CONTROL PLAN		A003-01 P16 PLUMBING DETAILS
A003-02 C62 EROSION CONTROL DETAILS		A003-01 P17 PLUMBING DETAILS
A003-02 C63 EROSION CONTROL DETAILS		A003-01 P18 PLUMBING DETAILS
A003-02 C64 EROSION CONTROL DETAILS		A003-01 P19 PLUMBING DETAILS
A003-02 C65 EROSION CONTROL DETAILS		A003-01 P20 PLUMBING DETAILS
A003-02 C66 EROSION CONTROL DETAILS		A003-01 P21 PLUMBING DETAILS
		A003-01 P22 PLUMBING DETAILS
		A003-01 P23 PLUMBING DETAILS
		A003-01 P24 PLUMBING DETAILS
		A003-01 P25 PLUMBING DETAILS
		A003-01 P26 PLUMBING DETAILS
		A003-01 P27 PLUMBING DETAILS
		A003-01 P28 PLUMBING DETAILS
		A003-01 P29 PLUMBING DETAILS
		A003-01 P30 PLUMBING DETAILS
		A003-01 P31 PLUMBING DETAILS
		A003-01 P32 PLUMBING DETAILS
		A003-01 P33 PLUMBING DETAILS
		A003-01 P34 PLUMBING DETAILS
		A003-01 P35 PLUMBING DETAILS
		A003-01 P36 PLUMBING DETAILS
		A003-01 P37 PLUMBING DETAILS
		A003-01 P38 PLUMBING DETAILS
		A003-01 P39 PLUMBING DETAILS
		A003-01 P40 PLUMBING DETAILS
		A003-01 P41 PLUMBING DETAILS
		A003-01 P42 PLUMBING DETAILS
		A003-01 P43 PLUMBING DETAILS
		A003-01 P44 PLUMBING DETAILS
		A003-01 P45 PLUMBING DETAILS
		A003-01 P46 PLUMBING DETAILS
		A003-01 P47 PLUMBING DETAILS
		A003-01 P48 PLUMBING DETAILS
		A003-01 P49 PLUMBING DETAILS
		A003-01 P50 PLUMBING DETAILS
		A003-01 P51 PLUMBING DETAILS
		A003-01 P52 PLUMBING DETAILS
		A003-01 P53 PLUMBING DETAILS
		A003-01 P54 PLUMBING DETAILS
		A003-01 P55 PLUMBING DETAILS
		A003-01 P56 PLUMBING DETAILS
		A003-01 P57 PLUMBING DETAILS
		A003-01 P58 PLUMBING DETAILS
		A003-01 P59 PLUMBING DETAILS
		A003-01 P60 PLUMBING DETAILS
		A003-01 P61 PLUMBING DETAILS
		A003-01 P62 PLUMBING DETAILS
		A003-01 P63 PLUMBING DETAILS
		A003-01 P64 PLUMBING DETAILS
		A003-01 P65 PLUMBING DETAILS
		A003-01 P66 PLUMBING DETAILS
		A003-01 P67 PLUMBING DETAILS
		A003-01 P68 PLUMBING DETAILS
		A003-01 P69 PLUMBING DETAILS
		A003-01 P70 PLUMBING DETAILS
		A003-01 P71 PLUMBING DETAILS
		A003-01 P72 PLUMBING DETAILS
		A003-01 P73 PLUMBING DETAILS
		A003-01 P74 PLUMBING DETAILS
		A003-01 P75 PLUMBING DETAILS
		A003-01 P76 PLUMBING DETAILS
		A003-01 P77 PLUMBING DETAILS
		A003-01 P78 PLUMBING DETAILS
		A003-01 P79 PLUMBING DETAILS
		A003-01 P80 PLUMBING DETAILS
		A003-01 P81 PLUMBING DETAILS
		A003-01 P82 PLUMBING DETAILS
		A003-01 P83 PLUMBING DETAILS
		A003-01 P84 PLUMBING DETAILS
		A003-01 P85 PLUMBING DETAILS
		A003-01 P86 PLUMBING DETAILS
		A003-01 P87 PLUMBING DETAILS
		A003-01 P88 PLUMBING DETAILS
		A003-01 P89 PLUMBING DETAILS
		A003-01 P90 PLUMBING DETAILS
		A003-01 P91 PLUMBING DETAILS
		A003-01 P92 PLUMBING DETAILS
		A003-01 P93 PLUMBING DETAILS
		A003-01 P94 PLUMBING DETAILS
		A003-01 P95 PLUMBING DETAILS
		A003-01 P96 PLUMBING DETAILS
		A003-01 P97 PLUMBING DETAILS
		A003-01 P98 PLUMBING DETAILS
		A003-01 P99 PLUMBING DETAILS
		A003-01 P00 PLUMBING DETAILS
		A003-01 P01 PLUMBING DETAILS
		A003-01 P02 PLUMBING DETAILS
		A003-01 P03 PLUMBING DETAILS
		A003-01 P04 PLUMBING DETAILS
		A003-01 P05 PLUMBING DETAILS
		A003-01 P06 PLUMBING DETAILS
		A003-01 P07 PLUMBING DETAILS
		A003-01 P08 PLUMBING DETAILS
		A003-01 P09 PLUMBING DETAILS
		A003-01 P10 PLUMBING DETAILS
		A003-01 P11 PLUMBING DETAILS
		A003-01 P12 PLUMBING DETAILS
		A003-01 P13 PLUMBING DETAILS
		A003-01 P14 PLUMBING DETAILS
		A003-01 P15 PLUMBING DETAILS
		A003-01 P16 PLUMBING DETAILS
		A003-01 P17 PLUMBING DETAILS
		A003-01 P18 PLUMBING DETAILS
		A003-01 P19 PLUMBING DETAILS
		A003-01 P20 PLUMBING DETAILS
		A003-01 P21 PLUMBING DETAILS
		A003-01 P22 PLUMBING DETAILS
		A003-01 P23 PLUMBING DETAILS
		A003-01 P24 PLUMBING DETAILS
		A003-01 P25 PLUMBING DETAILS
		A003-01 P26 PLUMBING DETAILS
		A003-01 P27 PLUMBING DETAILS
		A003-01 P28 PLUMBING DETAILS
		A003-01 P29 PLUMBING DETAILS
		A003-01 P30 PLUMBING DETAILS
		A003-01 P31 PLUMBING DETAILS
		A003-01 P32 PLUMBING DETAILS
		A003-01 P33 PLUMBING DETAILS
		A003-01 P34 PLUMBING DETAILS
		A003-01 P35 PLUMBING DETAILS
		A003-01 P36 PLUMBING DETAILS
		A003-01 P37 PLUMBING DETAILS
		A003-01 P38 PLUMBING DETAILS
		A003-01 P39 PLUMBING DETAILS
		A003-01 P40 PLUMBING DETAILS
		A003-01 P41 PLUMBING DETAILS
		A003-01 P42 PLUMBING DETAILS
		A003-01 P43 PLUMBING DETAILS
		A003-01 P44 PLUMBING DETAILS
		A003-01 P45 PLUMBING DETAILS
		A003-01 P46 PLUMBING DETAILS
		A003-01 P47 PLUMBING DETAILS
		A003-01 P48 PLUMBING DETAILS
		A003-01 P49 PLUMBING DETAILS
		A003-01 P50 PLUMBING DETAILS
		A003-01 P51 PLUMBING DETAILS
		A003-01 P52 PLUMBING DETAILS
		A003-01 P53 PLUMBING DETAILS
		A003-01 P54 PLUMBING DETAILS
		A003-01 P55 PLUMBING DETAILS
		A003-01 P56 PLUMBING DETAILS
		A003-01 P57 PLUMBING DETAILS
		A003-01 P58 PLUMBING DETAILS
		A003-01 P59 PLUMBING DETAILS
		A003-01 P60 PLUMBING DETAILS
		A003-01 P61 PLUMBING DETAILS
		A003-01 P62 PLUMBING DETAILS
		A003-01 P63 PLUMBING DETAILS
		A003-01 P64 PLUMBING DETAILS
		A003-01 P65 PLUMBING DETAILS
		A003-01 P66 PLUMBING DETAILS
		A003-01 P67 PLUMBING DETAILS
		A003-01 P68 PLUMBING DETAILS
		A003-01 P69 PLUMBING DETAILS
		A003-01 P70 PLUMBING DETAILS
		A003-01 P71 PLUMBING DETAILS
		A003-01 P72 PLUMBING DETAILS
		A003-01 P73 PLUMBING DETAILS
		A003-01 P74 PLUMBING DETAILS
		A003-01 P75 PLUMBING DETAILS
		A003-01 P76 PLUMBING DETAILS
		A003-01 P77 PLUMBING DETAILS
		A003-01 P78 PLUMBING DETAILS
		A003-01 P79 PLUMBING DETAILS
		A003-01 P80 PLUMBING DETAILS
		A003-01 P81 PLUMBING DETAILS
		A003-01 P82 PLUMBING DETAILS
		A003-01 P83 PLUMBING DETAILS
		A003-01 P84 PLUMBING DETAILS
		A003-01 P85 PLUMBING DETAILS
		A003-01 P86 PLUMBING DETAILS
		A003-01 P87 PLUMBING DETAILS
		A003-01 P88 PLUMBING DETAILS
		A003-01 P89 PLUMBING DETAILS
		A003-01 P90 PLUMBING DETAILS
		A003-01 P91 PLUMBING DETAILS
		A003-01 P92 PLUMBING DETAILS
		A003-01 P93 PLUMBING DETAILS
		A003-01 P94 PLUMBING DETAILS
		A003-01 P95 PLUMBING DETAILS
		A003-01 P96 PLUMBING DETAILS
		A003-01 P97 PLUMBING DETAILS
		A003-01 P98 PLUMBING DETAILS
		A003-01 P99 PLUMBING DETAILS
		A003-01 P00 PLUMBING DETAILS
		A003-01 P01 PLUMBING DETAILS
		A003-01 P02 PLUMBING DETAILS
		A003-01 P03 PLUMBING DETAILS
		A003-01 P04 PLUMBING DETAILS
		A003-01 P05 PLUMBING DETAILS
		A003-01 P06 PLUMBING DETAILS
		A003-01 P07 PLUMBING DETAILS
		A003-01 P08 PLUMBING DETAILS
		A003-01 P09 PLUMBING DETAILS
		A003-01 P10 PLUMBING DETAILS
		A003-01 P11 PLUMBING DETAILS
		A003-01 P12 PLUMBING DETAILS
		A003-01 P13 PLUMBING DETAILS
		A003-01 P14 PLUMBING DETAILS
		A003-01 P15 PLUMBING DETAILS
		A003-01 P16 PLUMBING DETAILS
		A003-01 P17 PLUMBING DETAILS
		A003-01 P18 PLUMBING DETAILS
		A003-01 P19 PLUMBING DETAILS
		A003-01 P20 PLUMBING DETAILS
		A003-01 P21 PLUMBING DETAILS
		A003-01 P22 PLUMBING DETAILS
		A003-01 P23 PLUMBING DETAILS
		A003-01 P24 PLUMBING DETAILS
		A003-01 P25 PLUMBING DETAILS
		A003-01 P26 PLUMBING DETAILS

GENERAL NOTES

- THE CONTRACTOR SHALL COMPLY WITH ALL APPLICABLE SAFETY REGULATIONS. ALL CONSTRUCTION SHALL BE COMPLETED FOLLOWING CURRENT CITY STANDARD SPECIFICATIONS AND SPECIAL PROVISIONS.
- CONTRACTOR WILL BE REQUIRED TO PROVIDE NOTICE TO UTILITY COMPANIES A MINIMUM OF SEVENTY-TWO (72) HOURS PRIOR TO ANY EXCAVATION, AS FOLLOWS:
KANSAS ONE-CALL 687-2470
THE CONTRACTOR MUST NOTIFY THE FOLLOWING IN CASE OF AN EMERGENCY:

AT&T	1-800-246-8464
BLACK HILLS ENERGY	1-800-694-8989
CITY OF WICHITA WATER	1-316-268-4555
CITY OF WICHITA SEWER	1-316-268-4073
CITY OF WICHITA STORMWATER	1-316-268-4090
CITY OF WICHITA TRAFFIC	1-316-268-4034
COX COMMUNICATIONS	1-888-249-3530
KANSAS GAS SERVICE	1-888-482-4950
WESTAR ENERGY	1-800-544-4857
- UTILITY SERVICE LINES, POLES, ETC. ARE TO BE ADJUSTED AS NECESSARY BY OTHERS PRIOR TO CONSTRUCTION UNLESS THE PLANS SPECIFICALLY CALL FOR THEIR ADJUSTMENT BY THE CONTRACTOR OR UNLESS THE PLANS SPECIFICALLY IDENTIFY A UTILITY TO BE ADJUSTED BY ITS OWNER DURING CONSTRUCTION. EXISTING UTILITIES AND THEIR LOCATION, AS SHOWN ON THE PLANS, REPRESENT THE BEST INFORMATION OBTAINABLE FOR DESIGN. THE CONTRACTOR WILL BE REQUIRED TO WORK AROUND EXISTING UTILITIES WITHIN THE RIGHT-OF-WAY WHICH DO NOT CONFLICT WITH PROPOSED CONSTRUCTION.
- RUBBLE FROM THE REMOVAL OF MISCELLANEOUS STRUCTURES AND EXCESS EXCAVATION WHICH IS TO BE WASTED SHALL BE DISPOSED OF ON SITES TO BE PROVIDED BY THE CONTRACTOR. THESE SITES SHALL BE APPROVED BY THE ENGINEER AS TO SUITABILITY, APPEARANCE AND SITE LOCATION. LOCATIONS, IN THE OPINION OF THE ENGINEER, THAT WILL LEAVE AN UNSIGHTLY APPEARANCE WILL NOT BE APPROVED. ALL DISPOSAL SITES MUST BE APPROVED BY THE KANSAS DEPARTMENT OF HEALTH AND ENVIRONMENT. MATERIAL, EITHER STOCKPILED OR DISPOSED OF IN A FLOOD PLAIN WILL REQUIRE A KANSAS STATE BOARD OF AGRICULTURE PERMIT. ANY MATERIAL DUMPED IN WATERS OF THE UNITED STATES OR WETLANDS IS SUBJECT TO U.S. CORPS OF ENGINEERS PERMITTING REGULATIONS. ANY MATERIAL BURIED OR STOCKPILED BEYOND APPROVED CONSTRUCTION LIMITS WILL REQUIRE ADDITIONAL ARCHAEOLOGICAL INVESTIGATIONS UNLESS BURIED IN A PREVIOUSLY APPROVED BORROW LOCATION.
- TREES AND SHRUBS IN PUBLIC RIGHT-OF-WAY WHICH ARE IN DIRECT CONFLICT WITH PROPOSED NEW CONSTRUCTION SHALL BE REMOVED BY THE CONTRACTOR WITH THE ENGINEER'S APPROVAL. TREES AND SHRUBS WHICH ARE NOT IN DIRECT CONFLICT WITH PROPOSED NEW CONSTRUCTION SHALL BE SAVED AND PROTECTED FROM DAMAGE.
- THE CONTRACTOR SHALL GIVE ALL PROPERTY OWNERS AND/OR TENANTS OF DEVELOPED PROPERTY ADJUTING THE CONSTRUCTION OF THIS PROJECT A MINIMUM OF TEN (10) DAYS NOTICE PRIOR TO START OF CONSTRUCTION.
- THE CONTRACTOR SHALL BE RESPONSIBLE FOR PRESERVING PROPERTY IRONS. THE CONTRACTOR WILL BE REQUIRED TO RE-ESTABLISH ANY PROPERTY IRONS WHICH ARE DAMAGED OR DESTROYED BY HIS CONSTRUCTION OPERATIONS. SUCH IRONS SHALL BE RE-ESTABLISHED BY A LICENSED LAND SURVEYOR IN ACCORDANCE WITH STATE LAWS.
- THE WATER DISTRIBUTION DIVISION SHALL FIELD LOCATE WATER VALVES ONE TIME DURING CONSTRUCTION WHEN REQUESTED BY THE CONTRACTOR. IT SHALL BE THE CONTRACTOR'S RESPONSIBILITY TO PRESERVE SUCH FIELD LOCATIONS DURING THE CONSTRUCTION PROCESS. WATER VALVES, VALVE BOXES OR FIRE HYDRANTS DAMAGED DURING CONSTRUCTION SHALL BE REPAIRED BY CONTRACTOR AT HIS OWN EXPENSE. VALVE BOXES AND WATER METERS WITHIN THE PROJECT LIMITS SHALL BE ADJUSTED TO MATCH FIELD GRADES.
- THE CONTRACTOR SHALL NOTIFY THE CONSULTANT ENGINEER AND TOM MASON WITH THE CITY AT 316-268-4574 WITH THE ANTICIPATED CONSTRUCTION START DATE AND NOTIFY THEM OF PROJECT COMPLETION, STAKING AND INSPECTION FOR THIS PROJECT WILL BE THE RESPONSIBILITY OF THE CONTRACTOR.
- IF TRAFFIC WILL BE IMPACTED BY CONSTRUCTION, A TRAFFIC CONTROL PLAN MUST BE SUBMITTED AND APPROVED BY THE CITY TRAFFIC ENGINEER, BRIAN COON AT TRAFFIC@WICHITA.GOV BEFORE CONSTRUCTION CAN BEGIN. THE CONTRACTOR SHALL BE RESPONSIBLE FOR ALL TRAFFIC CONTROL MEASURES TO FACILITATE CONSTRUCTION. ALL CONSTRUCTION ZONE MARKINGS AND SIGNAGE SHALL CONFORM TO THE LATEST VERSION OF THE MANUAL ON UNIFORM TRAFFIC CONTROL DEVICES (MUTCD) AS PUBLISHED BY THE US DEPT. OF TRANSPORTATION, FEDERAL HIGHWAY ADMINISTRATION. ALL COSTS ASSOCIATED WITH CONSTRUCTION MARKINGS AND SIGNAGE SHALL BE THE CONTRACTORS RESPONSIBILITY.
- ALL ELEVATIONS SHOWN ARE NAVD 88.
- ALL AREAS DISTURBED DURING CONSTRUCTION THAT WILL NOT BE UNDER PROPOSED PAVEMENT SHALL BE RESTORED TO MATCH EXISTING CONDITIONS.
- OPENING AND CLOSING OF WATER VALVES SHALL BE DONE SLOWLY TO PREVENT DAMAGE TO THE WATER DISTRIBUTIONS SYSTEM FROM WATER HAMMER. ALL VALVES CLOSED BY THE CONTRACTOR MUST BE REOPENED AS NEW CONSTRUCTION PERMITS. THE PROJECT INSPECTOR MUST ASCERTAIN THAT ANY VALVE CLOSED BY THE CONTRACTOR IS REOPENED. THE CONTRACTOR WILL BE PERMITTED TO OPERATE WATER VALVES ONLY WHEN THE PROJECT INSPECTOR ASSIGNED TO THE PROJECT IS PRESENT.
- THE CONTRACTOR SHALL PROVIDE MATERIALS FOR TEMPORARY BLOWOFF OF WATERLINES. CONNECTIONS TO THE EXISTING WATERLINE(S) SHALL BE MADE WITH CLEAN, SWABBED PIPE AND FLUSHED UPON COMPLETION OF TIE-INS.
- REQUESTS FOR SHORT TERM WATER INTERRUPTIONS SHALL BE MADE TO THE CITY WATER DISTRIBUTION DIVISION AND WILL BE SUBJECT TO THEIR APPROVAL. THE CONTRACTOR SHALL GIVE WRITTEN NOTICE TO ANY PROPERTY OWNER, BUSINESS, AND/OR TENANTS THAT WILL HAVE WATER SERVICE INTERRUPTED AT LEAST 5 DAYS IN ADVANCE. SUCH NOTIFICATIONS SHOULD INDICATE THE TIME AND DATE THAT THE WATER WILL BE TURNED OFF AND WHEN THE SERVICE WILL BE RESTORED. NO BUSINESS, PROPERTY OWNER, AND/OR TENANTS SHALL BE WITHOUT WATER SERVICE FOR MORE THAN 8 HOURS. PROPOSED TIE IN LOCATIONS WHICH WILL AFFECT WATER SERVICE TO PROPERTY OWNERS SHALL BE PERFORMED DURING NON-PEAK HOURS.
- THE CONTRACTOR MUST SCHEDULE THE CONNECTIONS TO THE EXISTING MAIN WITH THE CITY SUCH THAT THERE IS A MINIMUM DISRUPTION OF SERVICE. CONNECTIONS SHALL BE MADE DURING PERIODS OF LOW WATER USAGE. THE CONTRACTOR SHALL SUBMIT HIS PROPOSED SCHEDULE FOR COMPLETING WORK FOR CITY APPROVAL AT LEAST 10 DAYS PRIOR TO BEGINNING CONSTRUCTION.
- DEFLECTIONS AT PIPE JOINT OR COUPLINGS SHALL NOT EXCEED THE PIPE MANUFACTURERS RECOMMENDED MAXIMUM. WHERE DEFLECTIONS ARE GREATER THAN THE MAXIMUM ALLOWED, THE CONTRACTOR SHALL UTILIZE C.I.M.J. LONG SLEEVE OR MULTIPLE JOINTS.
- ANY EXTENSION GREATER THAN ONE LENGTH OF PIPE SHALL REQUIRE TESTING.
- CITY MAINTENANCE OF WATER MAINS ENDS AT RIGHT-OF-WAY OR EASEMENT LINE.
- VALVES 12 INCH AND LARGER ARE TO BE OPERATED BY THE CITY WATER DISTRIBUTION DIVISION, 48 HOURS OF ADVANCE NOTICE IS REQUIRED.
- ALL WET TAPS SHALL BE INSTALLED BY THE CITY OF WICHITA. THE CONTRACTOR WILL REIMBURSE THE CITY FOR TAPPING FEES.
- THE CONTRACTOR SHALL PROTECT FROM DAMAGE AND SUPPORT EXISTING UTILITIES THROUGH CONSTRUCTION AS APPROVED BY THE UTILITY OWNER AND THE ENGINEER AT THE CONTRACTORS EXPENSE.
- CONTRACTOR SHALL LIMIT THE EXTENT OF TRENCH OPEN OVERNIGHT AND WEEKENDS TO LESS THAN 50 FEET.
- ANY SIDEWALK, DRIVE APPROACH, CURB OR STREET PAVEMENT REMOVED TO CONSTRUCT PROJECT MUST HAVE A PAVEMENT CUT PERMIT AND BE REPLACED BY THE CITY CONTRACTOR. PERMITS CAN BE OBTAINED BY CALLING 316-268-4501 OR 316-268-4480.
- ALL APPROVED EXCESS EXCAVATION WHICH IS TO BE WASTED SHALL BE STOCKPILED AS DIRECTED BY THE ENGINEER AT NO ADDITIONAL COST TO THE OWNER. STOCKPILE LOCATIONS SHALL BE AS DIRECTED BY THE OWNER AND IN ACCORDANCE WITH GENERAL NOTE NO. 4 ABOVE.
- ALL LAWN/TURF AREAS DISTURBED BY CONSTRUCTION OF THE PROPOSED IMPROVEMENTS SHALL BE RESTORED WITH THE SAME GRASS/SOD AS EXISTING. RESTORATION OF DISTURBED AREAS SHALL INCLUDE, BUT NOT BE LIMITED TO, TOP SOIL PREPARATION, SEEDING, MULCH, AND/OR RESEEDING. ALL SEEDING/SODDING WORK SHALL BE IN ACCORDANCE WITH THE CITY OF WICHITA STANDARD SPECIFICATIONS AND THE CITY OF WICHITA ADMINISTRATIVE REGULATION NO. AR6.5 WHICH GOVERNS CLEANUP AND RESTORATION OR REPLACEMENT FOLLOWING CONSTRUCTION.
- THE CONTRACTOR SHALL SEED ALL AREAS DISTURBED BY CONSTRUCTION ACTIVITIES WITH TEMPORARY RYE GRASS. RYE GRASS SEED SHALL BE PLANTED AT A MINIMUM RATE OF SIX (6) POUNDS PER ONE THOUSAND (1,000) SQUARE FEET. THIS TEMPORARY SEEDING MAY BE OMITTED ONLY IF OTHER SEEDING IS REQUIRED IN ACCORDANCE WITH GENERAL NOTE NO. 26 ABOVE. TEMPORARY SEEDING OR PERMANENT SEEDING/SODDING SHALL BE APPLIED WITHIN 14 DAYS AFTER THE AREA HAS BEEN DISTURBED.
- EACH BIDDER SHALL VISIT THE SITE OF THE PROJECT BEFORE SUBMITTING THE PROPOSAL FOR THIS WORK SO THAT HE WILL BE FULLY INFORMED OF THE EXISTING FIELD CONDITIONS AND THE OBSTACLES WHICH MIGHT BE ENCOUNTERED. UPON AWARD OF THE CONTRACT THE CONTRACTOR WILL NOT BE GRANTED ANY ADDITIONAL COMPENSATION WITH REGARDS TO TIME AND MONEY FOR CONDITIONS THAT MAY HAVE BEEN EVALUATED DURING ANY INSPECTION OF THE SITE.
- THE CONTRACTOR SHALL INSTALL AND/OR MAINTAIN EROSION CONTROL METHODS AS SPECIFIED. THE GENERAL LOCATION OF THE REQUIRED EROSION CONTROL IS ILLUSTRATED ON THE EROSION CONTROL PLAN. THE CONTRACTOR SHALL BE RESPONSIBLE FOR MAINTAINING THE EROSION CONTROL SHOWN THROUGH THE COMPLETION OF THIS PROJECT. INSTALLATION OF THESE BMP'S DOES NOT RELIEVE THE CONTRACTOR OF THE RESPONSIBILITY OF ABATING SOIL EROSION.

WATER DISTRIBUTION SYSTEM

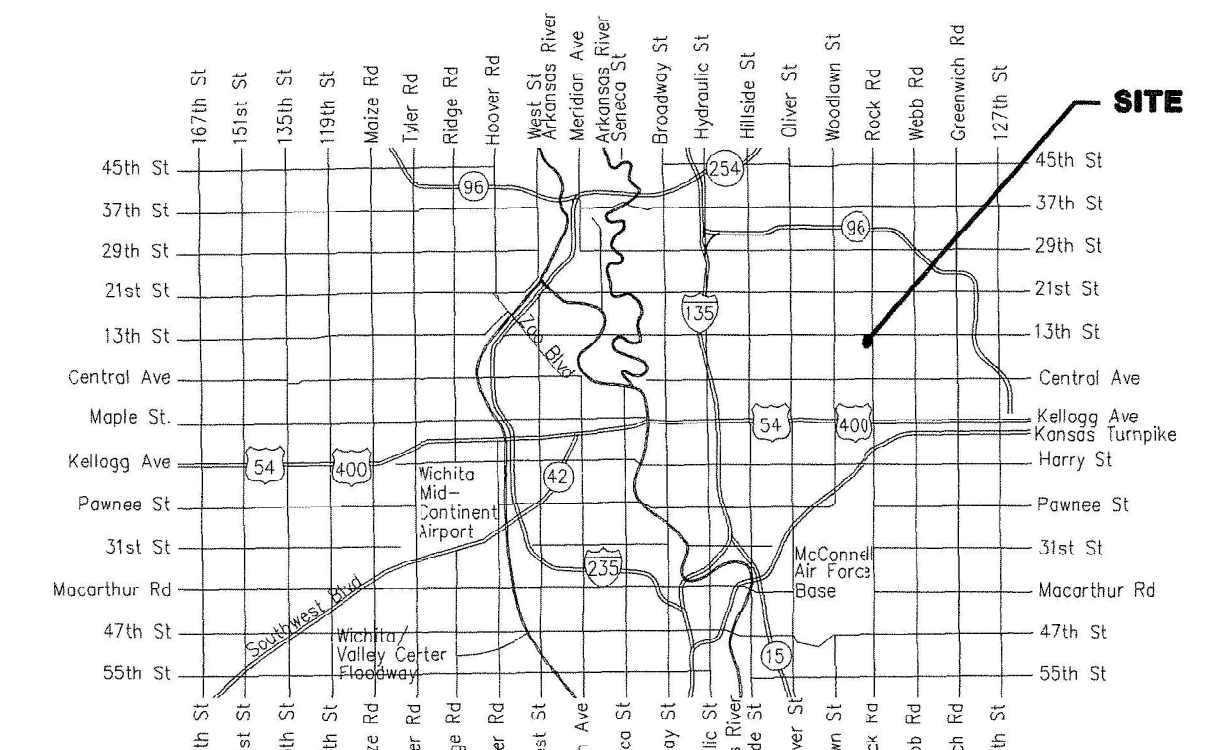
to serve

THE WICHITA CENTER FOR THE ARTS

1307 N. ROCK ROAD, WICHITA, KANSAS

CITY OF WICHITA, KANSAS

Gary Janzen, P.E. City Engineer
Project Number
2006 PPW (607853)



Vicinity Map

AS-BUILT PLANS
CONTRACTOR: DONDLINGER CONSTRUCTION
INSPECTOR: LEVI TURNER
RUGGLES & BOHM
PDF BY: LCT 10/4/2016

DDC Meter Information
Serial Number: 16324737
Meter Reading: 000001.49

KEY MAP

SEE SHEET C3.2

PPW SHEET INDEX

SHEET NO. C3.0	PPW TITLE SHEET
SHEET NO. C3.1	PPW KEY MAP
SHEET NO. C3.2	FIRE SERVICE LINE NO. 1
SHEET NO. C3.3	FIRE SERVICE LINE 1A & LINE NO. 2
SHEET NO. C3.4	FIRE SERVICE LINE 3
SHEET NO. C3.5	FIRE SERVICE LINE 3
SHEET NO. C3.6	STANDARD WATER ASSEMBLY DETAILS
SHEET NO. C3.7	STANDARD WATER SERVICE DETAILS
SHEET NO. C3.8	MISCELLANEOUS WATER DETAILS
SHEET NO. C3.9	STANDARD VAULT DETAILS
SHEET NO. C3.0	COPY OF PLAT
SHEET NO. C6.1	EROSION CONTROL PLAN
SHEET NO. C6.2 thru C6.6	EROSION CONTROL BMP DETAILS

HORIZONTAL CONTROL

SEE SHEET C3.2

BENCHMARKS

SEE SHEET C3.2

APPROVED AS NOTED
BY WICHITA PUBLIC WORKS
ENGINEERING DIVISION
& BY WICHITA FIRE DEPARTMENT

Engineering *Rebecca Dief 8/18/2016*
Utilities *Dy 8/3/16*
Fire Dept. *7-28-16*

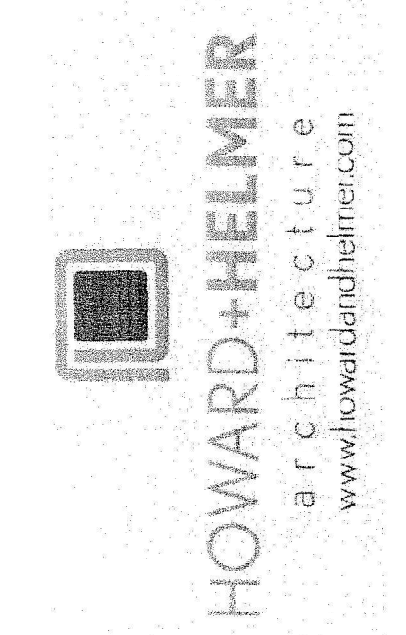
NOTE TO CONTRACTORS

Public Property:
Inspection and testing for the waterline is to be provided by a Licensed Consulting Engineering Firm under contract with the Owner/Developer. Said inspection is to be in accordance with the City of Wichita standard construction engineering practices and certified by a Professional Engineer Licensed in the state of Kansas. No work shall be performed in dedicated easements or public right-of-way by the Contractor without such inspection nor shall any work be commenced without written authorization by City Engineering. All Construction and Materials shall comply with the City of Wichita Specifications and Standards and Special Provision (on file and available in the City Engineer's Office) or on the City's Website.

Private Property:
Installation and testing for the fire protection line is to be performed by a City of Wichita licensed fire protection contractor in accordance with the fire codes as adopted by the City of Wichita. All material and construction practices for the fire protection line shall comply with the fire codes as adopted by the City of Wichita (available from the City of Wichita Fire Department). The Contractor shall not commence work without notification and approval of the Wichita Fire Department. Inspection of the fire protection line is to be provided by a licensed Engineering Firm under contract with the Owner/Developer and the Fire Department. The contractor shall not start work until the project inspector is assigned to the project and present on the site. Any work done without inspection will be required to be uncovered for inspection.

An approved copy of these plans signed by City staff are required on-site.

July 2016



3000 North Rock Road
14th Floor
Wichita, KS 67226
316.634.1000 (p) 316.634.1006 (f)

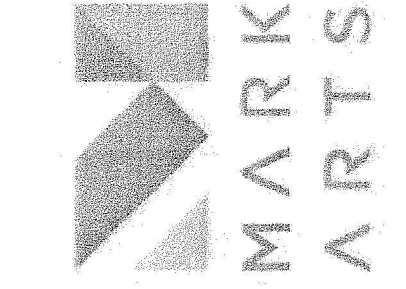


Project No.
15205.00

The drawing and all information hereon is the exclusive property of Howard & Helmer Architects P.A. and is not to be copied or used in any way without the express written consent of Howard & Helmer Architects P.A. All drawings, specifications, ideas, designs and arrangements appearing hereon constitute the original and unpublished work of the Architect.

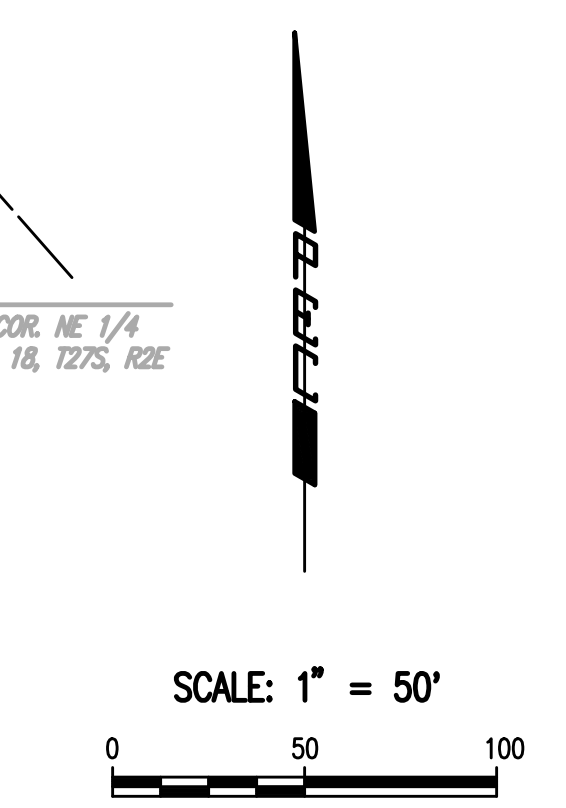
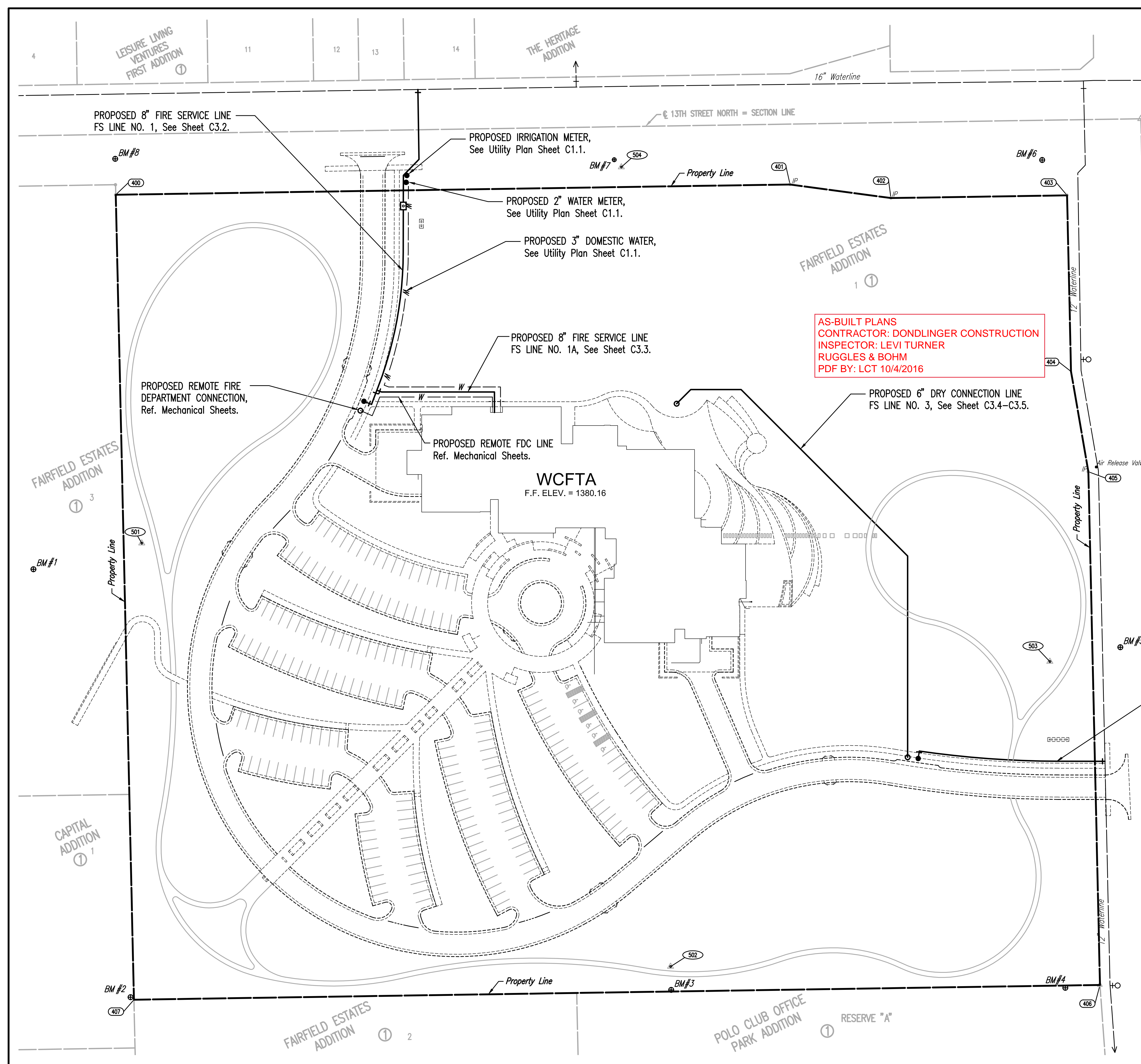
Copyright © 2016
Howard & Helmer
Architects P.A.

MARY R KOCH ARTS CENTER
1307 N. ROCK ROAD
WICHITA, KS 67206
FORMERLY WICHITA CENTER FOR THE ARTS



Professional Engineering Consultants, P.A.
30 SOUTH DUKE WICHITA, KS 67202
316.634.2681 www.ppec.com

Sheet
C3.0



- LEGEND**
- EXISTING WATER MAIN
 - PROPOSED WATER MAIN
 - EXISTING WATER VALVE
 - PROPOSED WATER VALVE
 - EXISTING FIRE HYDRANT
 - PROPOSED FIRE HYDRANT

PROPERTY COORDINATE LIST

POINT	NORTHING	EASTING
400	1,694,029.5478	1,674,445.8674
401	1,694,039.7537	1,675,115.8997
402	1,694,026.2785	1,675,216.1178
403	1,694,028.9438	1,675,391.0976
404	1,693,853.9882	1,675,395.0429
405	1,693,754.3505	1,675,412.2936
406	1,693,244.3702	1,675,423.7939
407	1,693,229.7492	1,674,463.9053

⊙ = COORDINATE POINT NO.

- BENCHMARK LIST @ BM #1**
- BM #1 - CHISELED "F" ON TOP OF SOUTHEAST SIDE OF CONCRETE LIGHT POLE BASE IN PARKING LOT FOR REFORMATION LUTHERAN CHURCH, SOUTHWEST OF BASKETBALL GOAL. ELEV.=1386.01 (NAVD88)
 - BM #2 - CHISELED "F" ON TOP OF EAST CURB BEHIND RETIREMENT HOME, NEAR NORTH END OF 6' CONCRETE WALL. ELEV.=1379.55 (NAVD88)
 - BM #3 - CHISELED "F" ON TOP OF NORTH SIDE OF CONCRETE LIGHT POLE BASE, NORTH NORTHEAST OF NORTH ENTRANCE TO ROCK ROAD DENTAL GROUP, NEAR THE SOUTH LINE OF WICHITA CENTER FOR THE ARTS PROPERTY. ELEV.=1375.33 (NAVD88)
 - BM #4 - CHISELED "F" ON TOP OF NORTH CURB FOR LENS EYE CARE, ±3' WEST OF THE NORTHEAST CORNER OF THE PARKING AREA. ELEV.=1372.79 (NAVD88)
 - BM #5 - CHISELED "F" ON TOP OF WEST CURB OF ROCK ROAD, SOUTH OF INTERSECTION WITH 13TH STREET, WEST OF 2ND HIGH LINE POLE SOUTH OF 13TH STREET. ELEV.=1376.01 (NAVD88)
 - BM #6 - CHISELED "F" ON THE SOUTHWEST CORNER OF CURB INLET, IN THE SOUTH CURB OF 13TH STREET, AT THE SOUTHWEST CORNER OF INTERSECTION OF 13TH STREET AND ROCK ROAD. ELEV.=1376.61 (NAVD88)
 - BM #7 - CHISELED "F" ON THE SOUTHWEST CORNER OF CURB INLET IN THE SOUTH CURB OF 13TH STREET, SOUTH OF ENTRANCE TO THE HERITAGE HOUSING COMPLEX. ELEV.=1380.88 (NAVD88)
 - BM #8 - CHISELED "F" ON TOP OF SOUTH CURB OF 13TH STREET, NEAR NORTHEAST CORNER OF REFORMATION LUTHERAN CHURCH PROPERTY. ELEV.=1386.53 (NAVD88)

- CONTROL POINTS @ 501**
- PL No. 501
#4 REBAR IN GRASS EAST OF ASPHALT PARKING FOR CHURCH
N: 1,693,883.327, E: 1,674,471.983
1. 64.7' NORTHWEST TO SOUTH CORNER BASKETBALL GOAL
2. 101.0' SOUTH SOUTHWEST TO NORTHEAST END TOP OF CURB
3. 111.1' WEST SOUTHWEST TO CHISELED "F" ON CONC. LIGHT BASE "BMK-1"
4. 400.0' NORTH TO ⊙ OF 13TH STREET
- PL No. 502
#4 REBAR IN GRASS ON SOUTH LINE OF WICHITA CENTER FOR THE ARTS SITE
N: 1,693,262.851, E: 1,674,997.154
1. 23.0' SOUTH SOUTHWEST TO CHISELED "F" ON TOP OF LIGHT BASE "BMK-3"
2. 55.7' EAST SOUTHWEST TO NORTHWEST CORNER OF ELECTRIC BOX
3. 79.5' WEST SOUTHWEST TO NORTHWEST CORNER OF TOP OF CURB
4. 75.0' SOUTHWEST TO ⊙ OF DOORWAY OF NORTH ENTRANCE TO ROCK ROAD DENTAL GROUP
- PL No. 503
#4 REBAR IN GRASS NEAR EAST LINE OF WICHITA CENTER FOR THE ARTS SITE
N: 1,693,565.724, E: 1,675,374.045
1. 70.8' EAST TO BACK OF WEST CURB OF ROCK ROAD
2. 47.5' NORTHEAST TO SOUTH FACE OF 10' GRAB APPLE TREE
3. 27.2' SOUTHWEST TO NORTH FACE OF 12" MAPLE TREE
4. 71.5' EAST NORTHEAST TO CHISELED "F" ON TOP OF WEST CURB OF ROCK ROAD
- PL No. 504
#4 REBAR IN GRASS SOUTH OF SIDEWALK, SOUTH R/W 13TH STREET
N: 1,694,037.043, E: 1,674,948.192
1. 2.0' NORTH TO BACK OF SIDEWALK
2. 17.7' EAST SOUTHWEST TO NORTH FACE OF 12" ELM
3. 10.0' NORTHWEST TO CHISELED "F" ON SOUTHWEST CORNER OF INLET "BMK-7"
4. 48.6' SOUTHWEST TO CENTER OF SANITARY SEWER MANHOLE

No.	Revision	By	Date

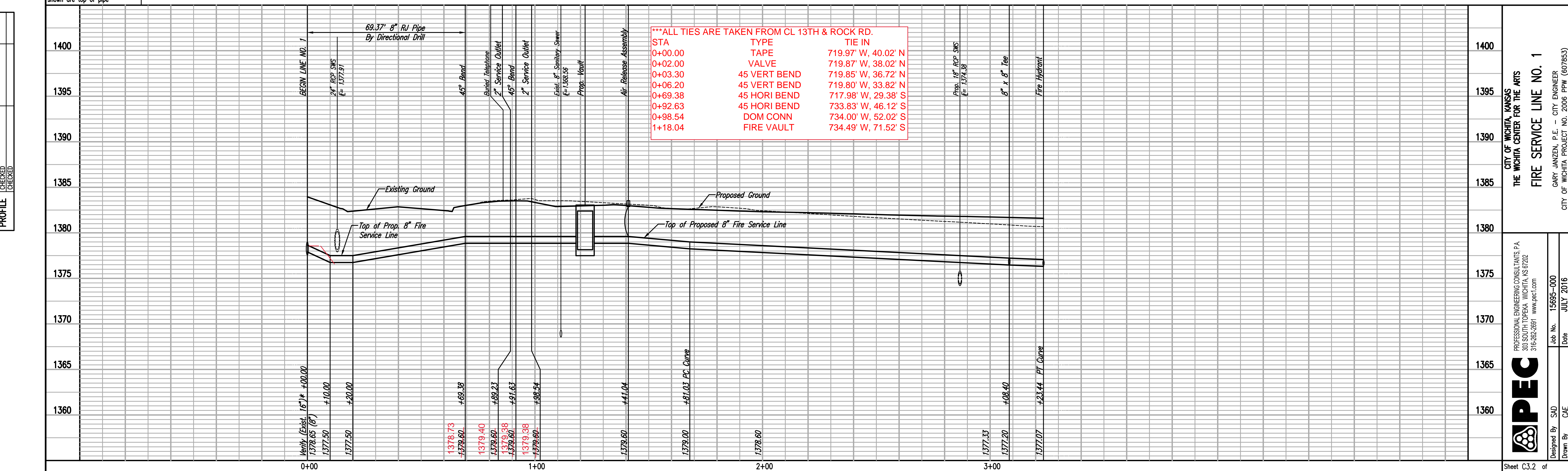
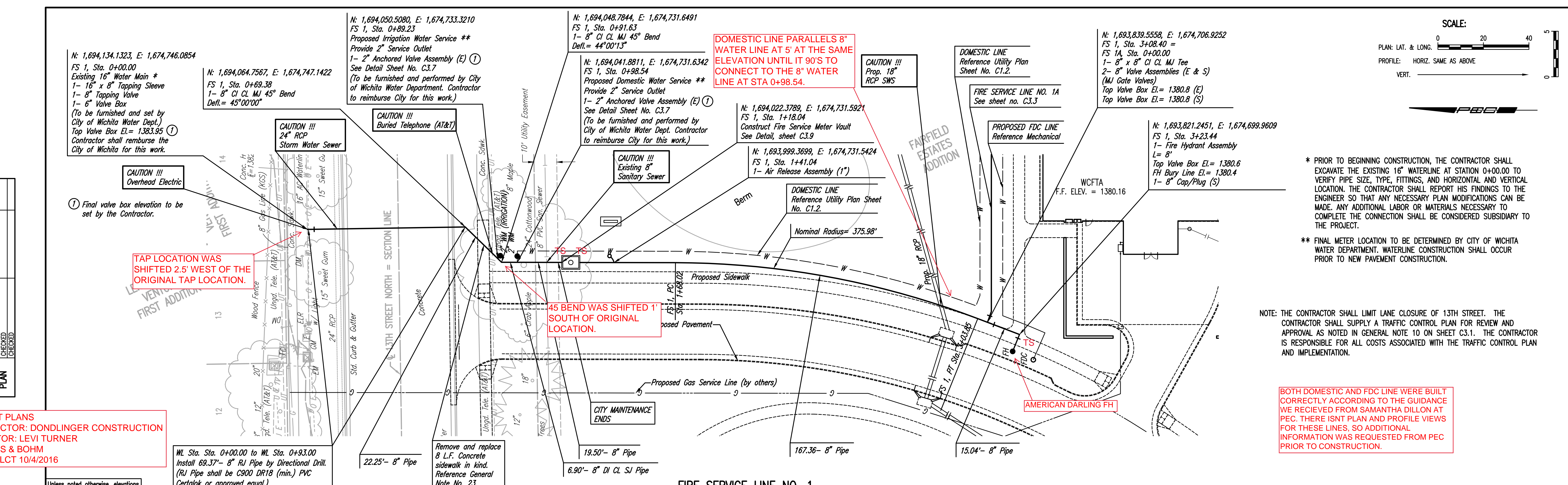
CITY OF WICHITA, KANSAS
THE WICHITA CENTER FOR THE ARTS
PPW KEY MAP
GARY JANZEN, P.E. - CITY ENGINEER
CITY OF WICHITA PROJECT NO. 2006 PPW (607853)

PEC PROFESSIONAL ENGINEERING CONSULTANTS P.A.
1507 N. ROCK ROAD
WICHITA, KS 67206
316-262-2891 www.pec1.com

Designed by: SAD Job No.: 15695-000
Drawn by: CAE Date: JULY 2016

Sheet: C3.1 of

Sheet: 07-05-2016, 4:30:30 PM, by: CSJ
Plot: Scale: 1" = 50' - 2016, 8:20:01 PM, by: CSJ
C:\Users\csj\OneDrive\Documents\15695-000-03.1_PPW_KEY_MAP



Sheet C3.2 of 4

PROFESSIONAL ENGINEERING CONSULTANTS, P.A.
303 SOUTH TOPEKA WICHITA, KS 67202
316-262-2981 www.pec.com

PEC

Designed By: SJD
Drawn By: CAE

Job No.: 15205-000
Date: JULY 2016

CITY OF WICHITA PROJECT NO. 2006-PWR (GROSS)

GARY JANZEN, P.E. - CITY ENGINEER

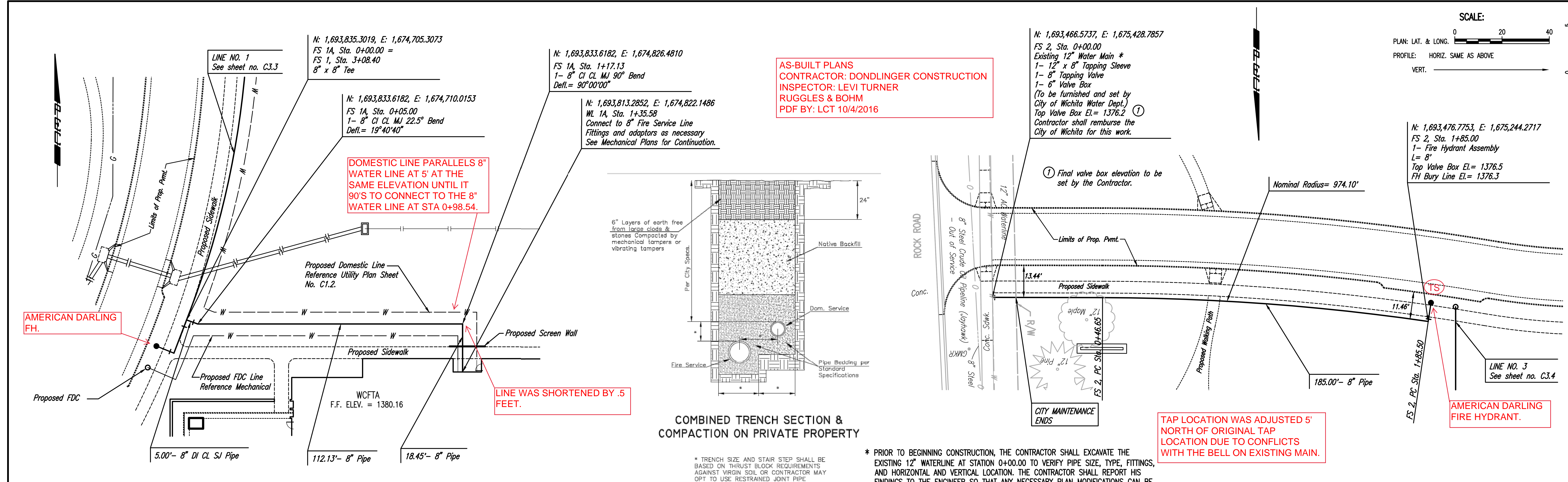
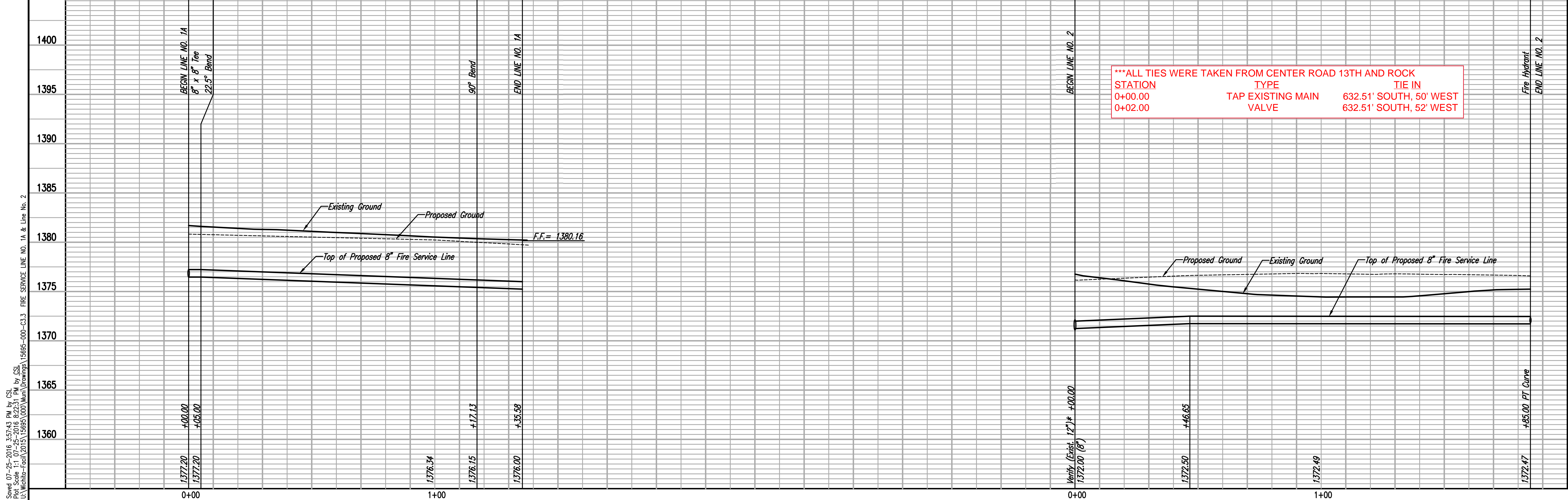
Sheet C3.2 of 4
Scale: 1" = 40'-0"
Date: July 1, 2016
City of Wichita, Kansas

FIRE SERVICE LINE NO. 1

Unless noted otherwise, elevations shown are top of pipe

DATE	BY	CHECKED

DATE	BY	CHECKED



AS-BUILT PLANS
 CONTRACTOR: DONDLINGER CONSTRUCTION
 INSPECTOR: LEVI TURNER
 RUGGLES & BOHM
 PDF BY: LCT 10/4/2016

DOMESTIC LINE PARALLELS 8" WATER LINE AT 5' AT THE SAME ELEVATION UNTIL IT 90'S TO CONNECT TO THE 8" WATER LINE AT STA 0+98.54.

LINE WAS SHORTENED BY .5 FEET.

TAP LOCATION WAS ADJUSTED 5' NORTH OF ORIGINAL TAP LOCATION DUE TO CONFLICTS WITH THE BELL ON EXISTING MAIN.

AMERICAN DARLING FIRE HYDRANT.

STATION	ELEVATION (Top of Pipe)	REMARKS
0+00	1372.00	BEGIN LINE NO. 2
0+05	1377.20	BEGIN LINE NO. 1A
0+05.50	1377.20	8" x 8" Tee
0+06.00	1377.20	22.5° Bend
0+98.54	1376.34	90° Bend
1+00	1376.15	END LINE NO. 1A
1+00	1376.00	45.5° Bend
1+85.50	1376.50	Fire Hydrant
1+85.50	1372.00	END LINE NO. 2

PROFESSIONAL ENGINEERING CONSULTANTS P.A.
 303 SOUTH TOPEKA WICHITA, KS 67202
 316-262-2981 www.pec.com

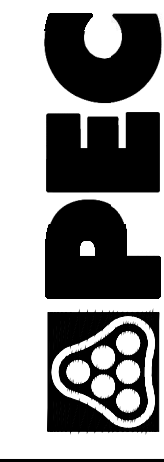
DESIGNED BY: SJD
 DRAWN BY: CAE

Job No. 15695-000
 Date JULY 2016

CITY OF WICHITA PROJECT NO. 2006-PFM (607653)

CITY OF WICHITA, KANSAS
 THE WICHITA CENTER FOR THE ARTS
 FIRE SERVICE LINE NO. 1A
 AND LINE NO. 2

GARY JANZEN, P.E. - CITY ENGINEER



PROFESSIONAL ENGINEERING CONSULTANTS P.A.
 303 SOUTH TOPEKA WICHITA, KS 67202
 316-262-2981 www.pec.com



MARY R KOCH ARTS CENTER
 1307 N. ROCK ROAD
 WICHITA, KS 67206
 FORMERLY WICHITA CENTER FOR THE ARTS

DESIGNED BY: SJD
 DRAWN BY: CAE

Job No. 15695-000
 Date JULY 2016

CITY OF WICHITA PROJECT NO. 2006-PFM (607653)

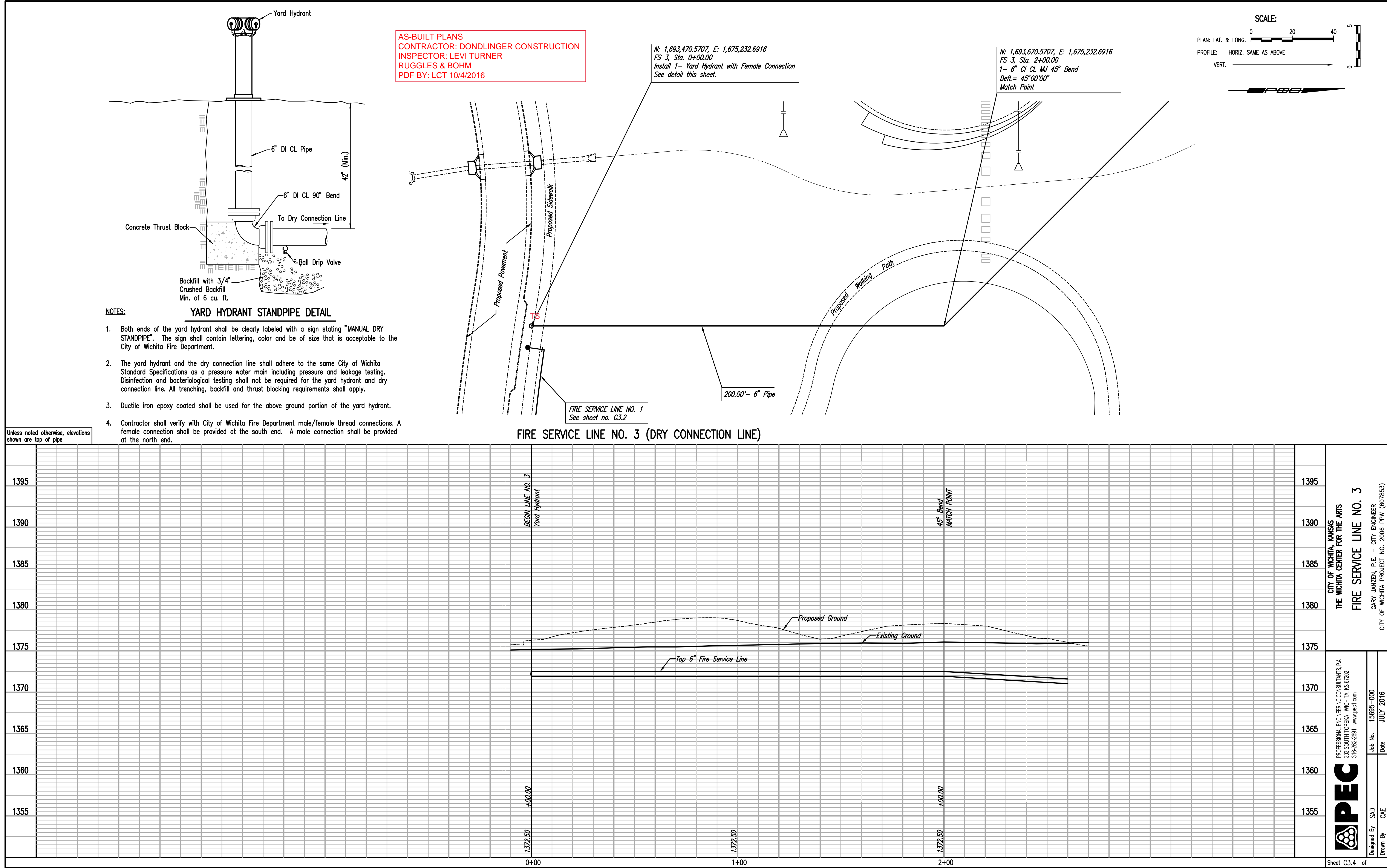


3500 north rock road
 bldg 500 wchita ks 67206
 316.634.1010 (p) 316.634.1010 (f)

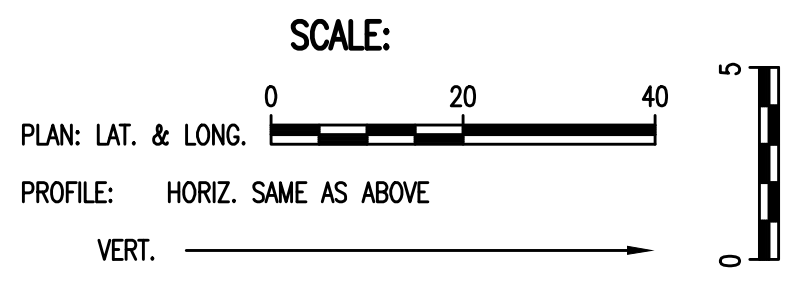
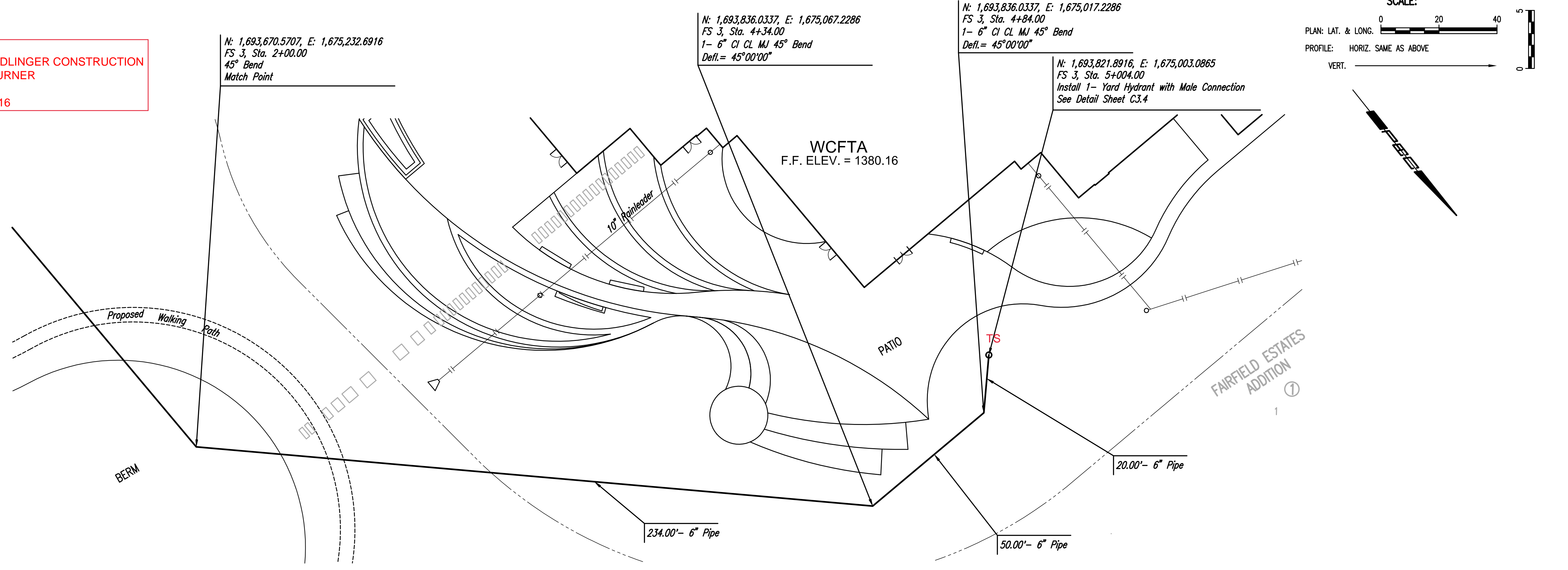
HOWARD+HELMER
 architecture
 www.howardandhelmer.com

DATE	BY
CHECKED	CHECKED
PLAN	

DATE	BY
CHECKED	CHECKED
PROFILE	



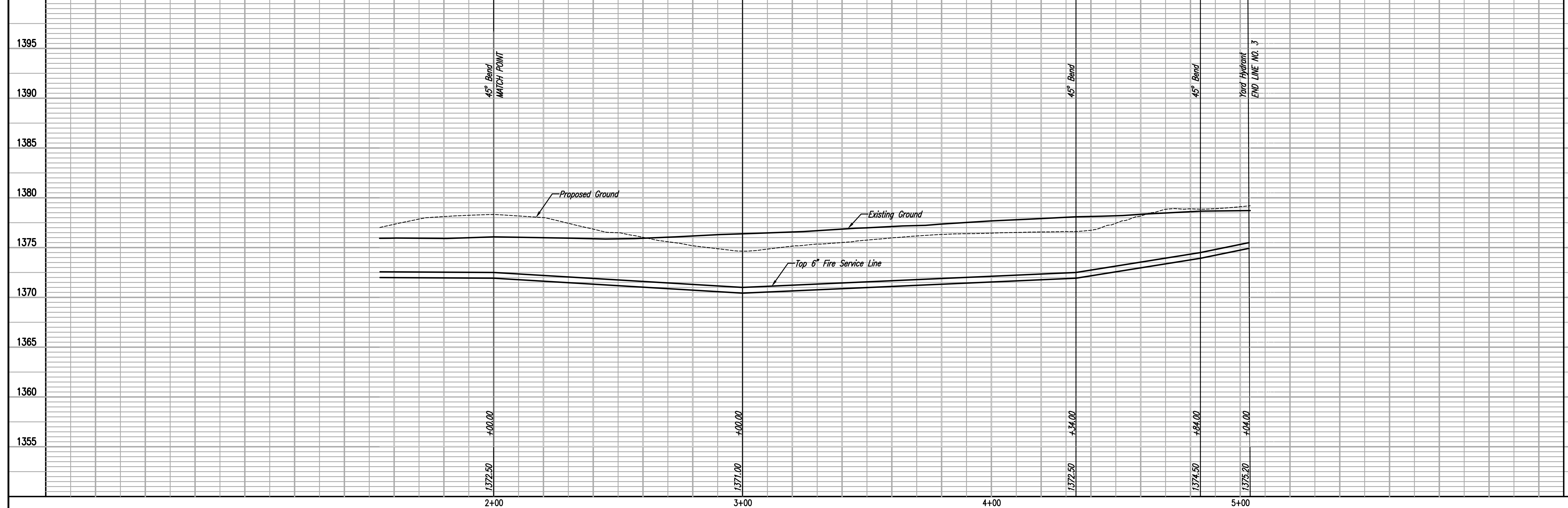
AS-BUILT PLANS
 CONTRACTOR: DONDLINGER CONSTRUCTION
 INSPECTOR: LEVI TURNER
 RUGGLES & BOHM
 PDF BY: LCT 10/4/2016



PLAN	CHECKED	DATE
	CHECKED	

PROFILE	CHECKED	DATE
	CHECKED	

Unless noted otherwise, elevations shown are top of pipe



PEC
 PROFESSIONAL ENGINEERING CONSULTANTS P.A.
 303 SOUTH TOPEKA WICHITA, KS 67202
 316-262-2981 www.pec.com

CITY OF WICHITA, KANSAS
 THE WICHITA CENTER FOR THE ARTS
 FIRE SERVICE LINE NO. 3

GARY JANZEN, P.E. - CITY ENGINEER
 CITY OF WICHITA PROJECT NO. 2006-PWR (607653)

Job No. 15895-000
 Date JULY 2016
 Designed By: SJD
 Drawn By: CAE

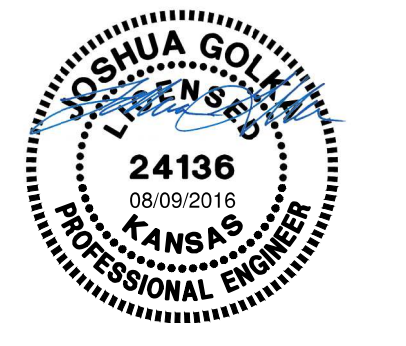
Sheet C3.5 of 4

Sheet: 07-05-2016, 3:12:58 PM, by: CSJ
 Plot: Scale: 1:1, 07-29-2016, 8:29:56 PM, by: CSJ
 US: Wichita - Food, 2015, 15895-000, Drawing: 15895-000-03.5 FIRE SERVICE LINE NO. 3

PHASE
 SUBMITTAL 3: BUILDING SHELL &
 ENGINEERED EQUIPMENT
 DATE
 JULY 1, 2016
 ADDENDUM 3-02
 JULY 26, 2016

HOWARD+HELMER
 architecture
 www.howardandhelmer.com

3500 north rock road
 bldg. 500 wchita, ks 67226
 316.634.1111 (p) 316.634.1016 (f)



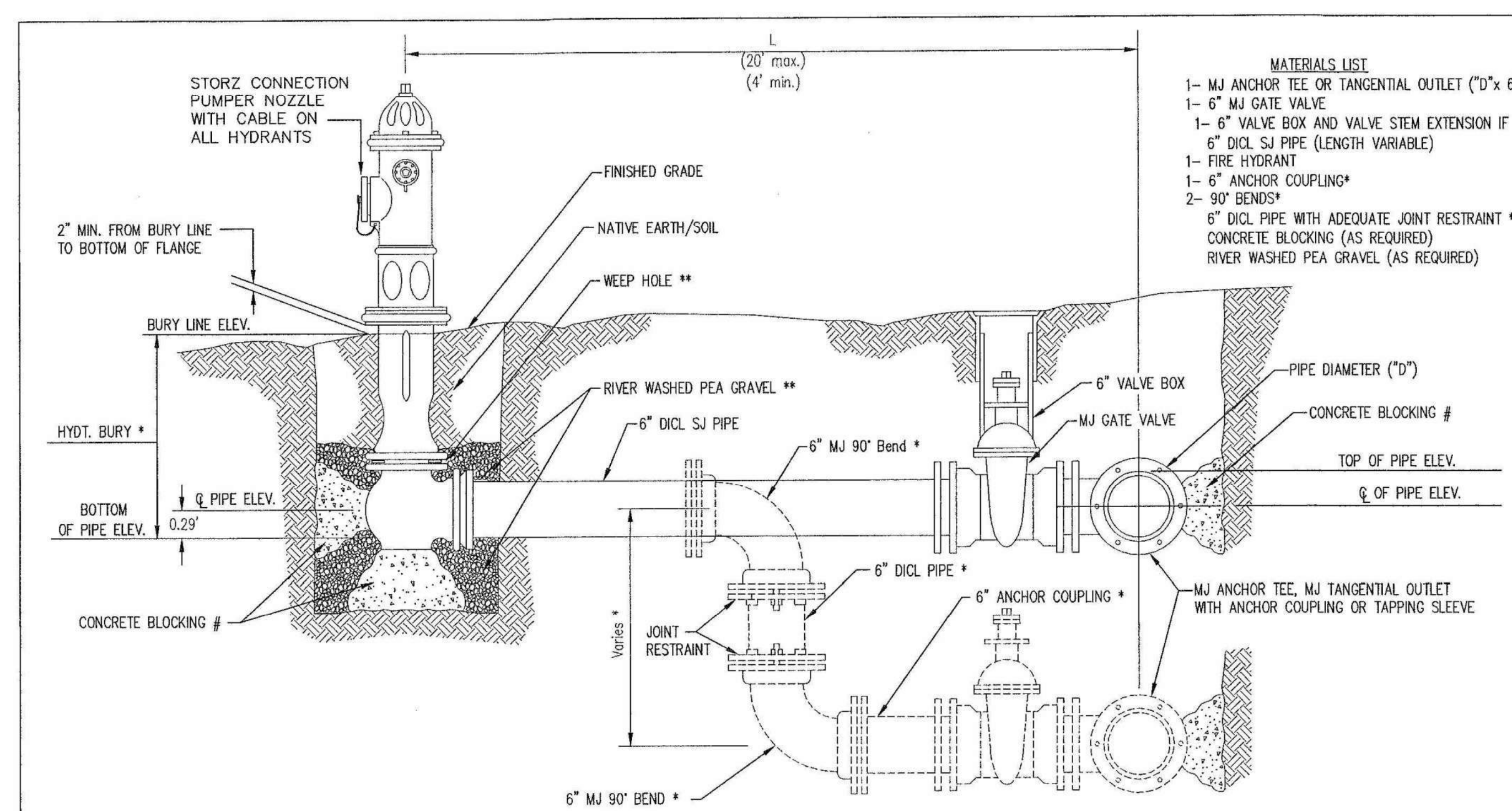
project no.
 1520500
 This drawing and all information herein is the exclusive property of Howard & Helmer Architects P.A. and is not to be copied or used in any way without the express written consent of Howard & Helmer Architects P.A. All drawings, specifications, notes, alterations and arrangements appearing herein constitute the original and uncompleted work of the Architect.
 Copyright © 2016
 Howard & Helmer
 Architects P.A.

PEC
 PROFESSIONAL ENGINEERING CONSULTANTS P.A.
 303 SOUTH TOPEKA WICHITA, KS 67202
 316-262-2981 www.pec.com

MARY R KOCH ARTS CENTER
 1307 N. ROCK ROAD
 WICHITA, KS 67206
 FORMERLY WICHITA CENTER FOR THE ARTS

sheet
C3.5

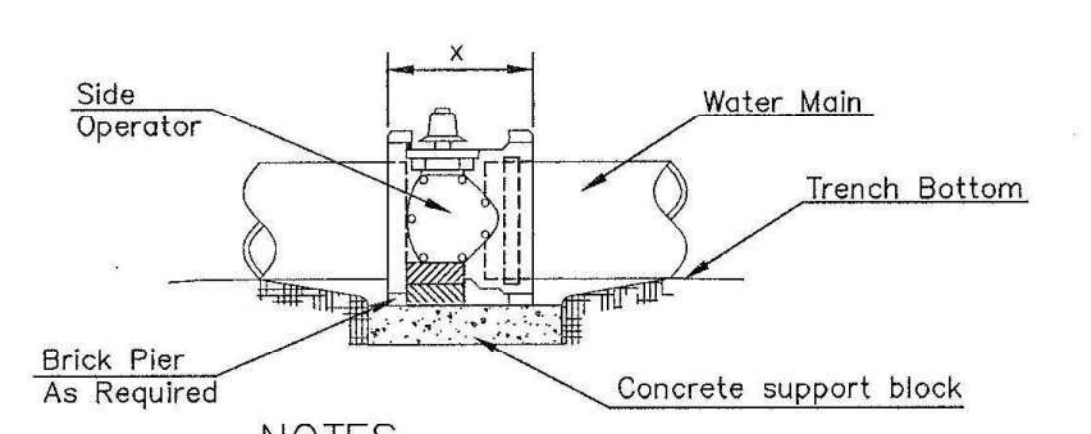
FIRE SERVICE LINE NO. 3



- MATERIALS LIST**
- 1- MJ ANCHOR TEE OR TANGENTIAL OUTLET ("D" x 6")
 - 1- 6" MJ GATE VALVE
 - 1- 6" VALVE BOX AND VALVE STEM EXTENSION IF REQUIRED *
 - 6" DICL SJ PIPE (LENGTH VARIABLE)
 - 1- FIRE HYDRANT
 - 1- 6" ANCHOR COUPLING*
 - 2- 90° BENDS*
 - 6" DICL PIPE WITH ADEQUATE JOINT RESTRAINT
 - CONCRETE BLOCKING (AS REQUIRED)
 - RIVER WASHED PEA GRAVEL (AS REQUIRED)

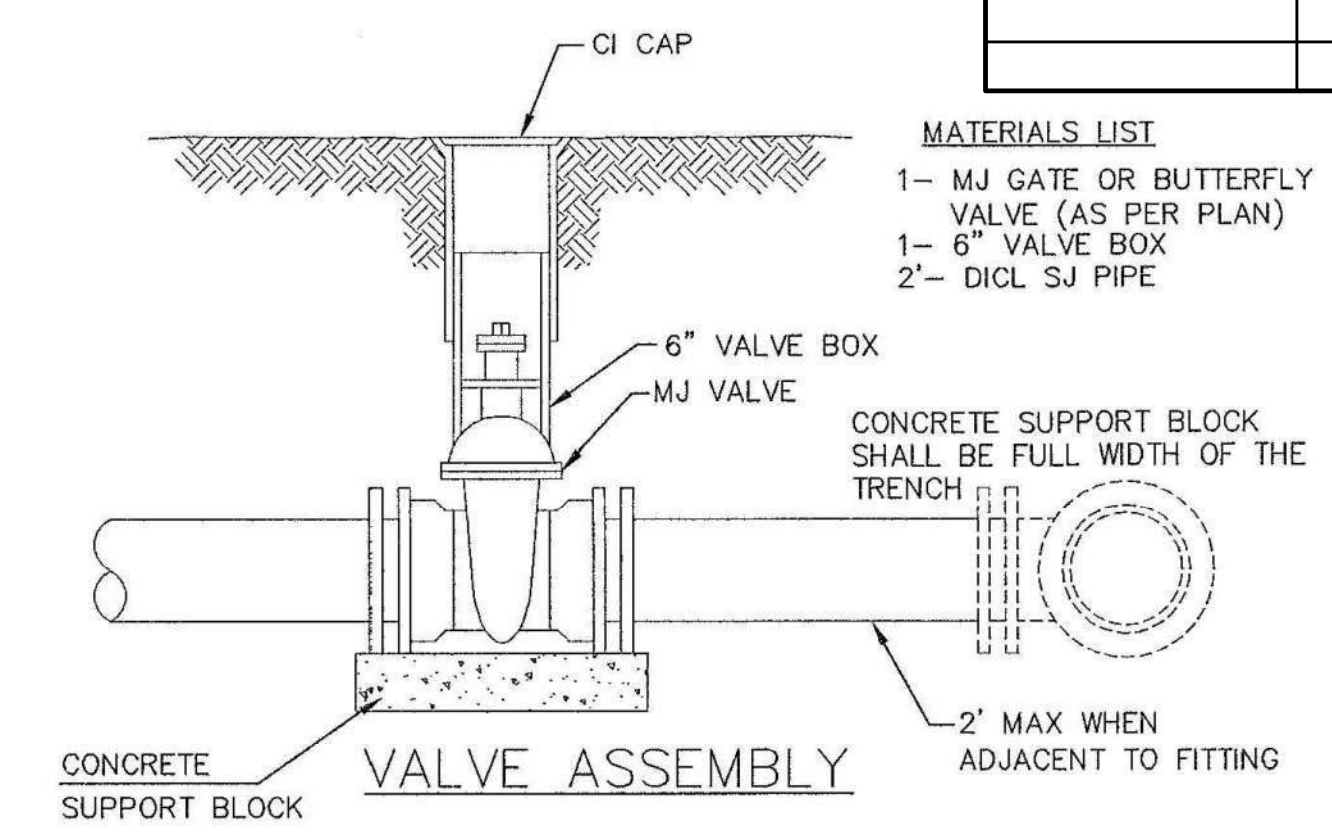
AS-BUILT PLANS
CONTRACTOR: DONDLINGER CONSTRUCTION
INSPECTOR: LEVI TURNER
RUGGLES & BOHM
PDF BY: LCT 10/4/2016

FIRE HYDRANTS REQUIRED				
STATION	BURY LINE ELEVATION	TOP OF PIPE ELEVATION	FIRE HYDRANT BURY REQUIRED*	VALVE STEM EXT. REQUIRED (ft)*
FS NO. 1, 3+23.44	1380.4	1376.57	4.5'	
FS NO. 2, 1+85.00	1376.3	1372.97	4.0'	

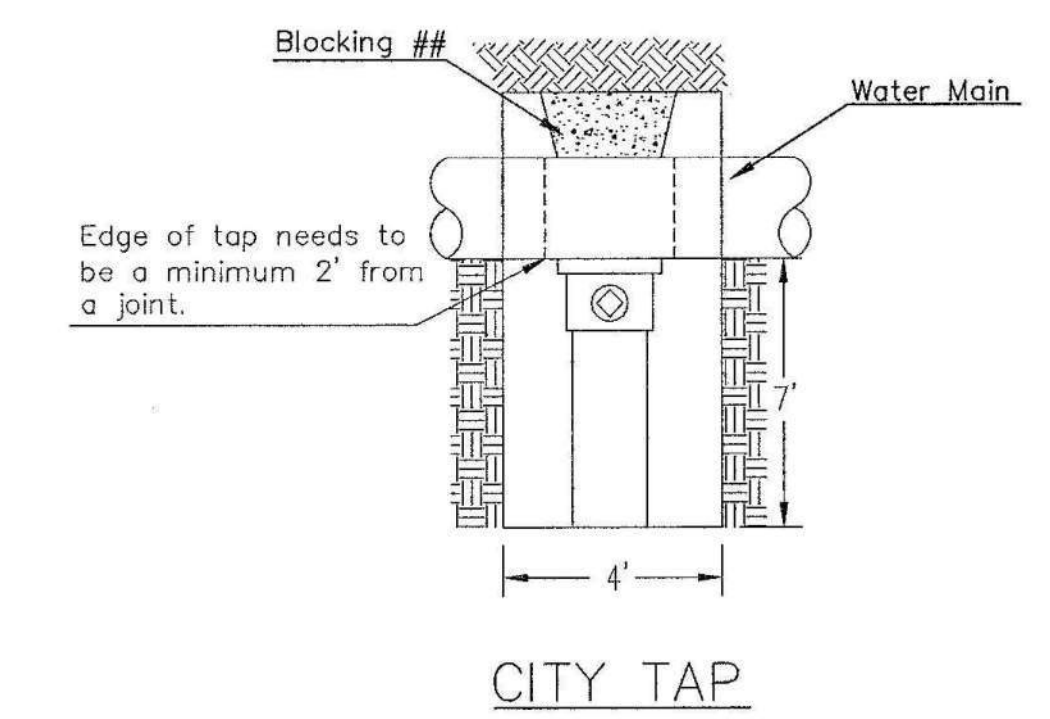


- NOTES**
- This detail covers Butterfly Valve installation, inclusive, regardless of type of pipe or joint used. 24" and larger lines to be detailed on plans.
 - 6" Valve Box and Cover required per City of Wichita Std. Specifications.
 - Conc. Support Block to be full width of trench.

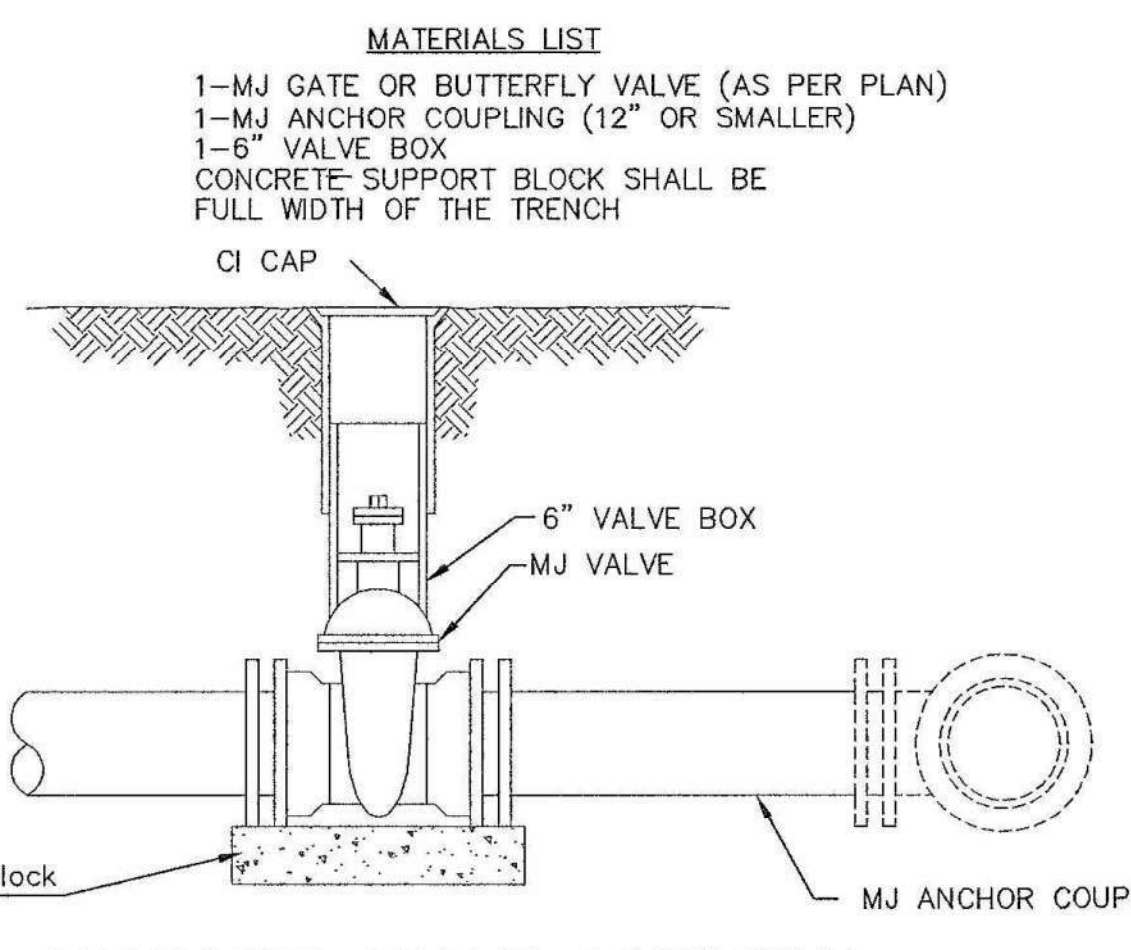
CONCRETE SUPPORT BLOCKING FOR BUTTERFLY VALVE INSTALLATION



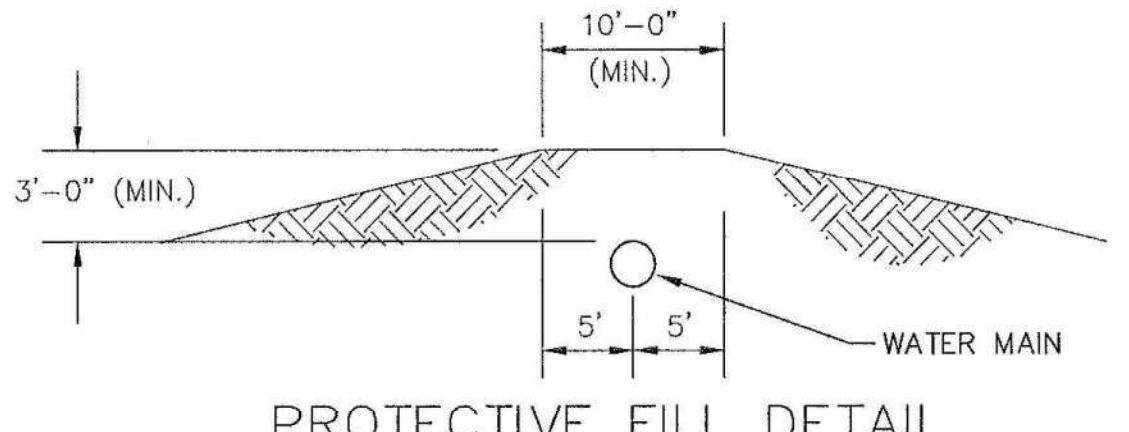
- MATERIALS LIST**
- 1- MJ GATE OR BUTTERFLY VALVE (AS PER PLAN)
 - 1- 6" VALVE BOX
 - 2- DICL SJ PIPE



When the City of Wichita makes tap, blocking is to be done by Contractor

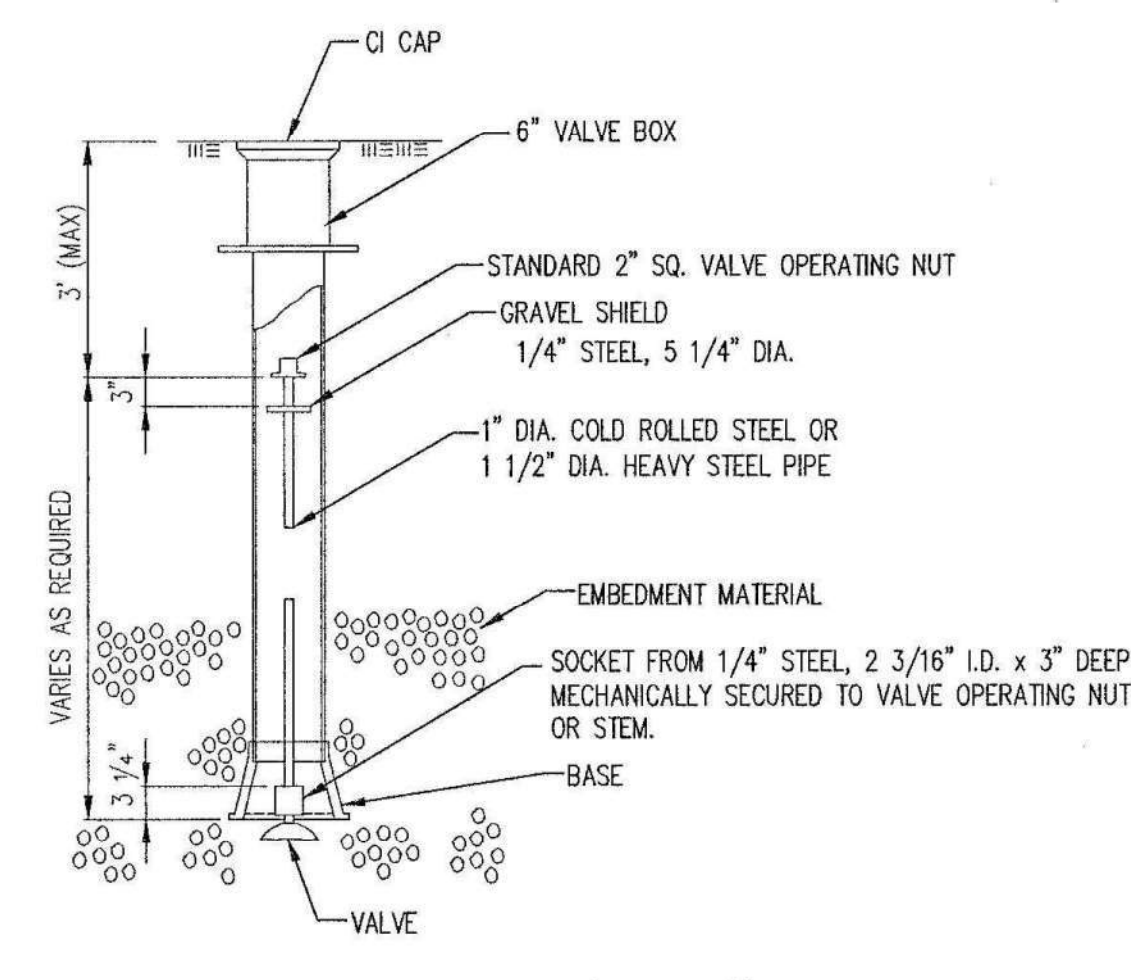


- MATERIALS LIST**
- 1- MJ GATE OR BUTTERFLY VALVE (AS PER PLAN)
 - 1- MJ ANCHOR COUPLING (12" OR SMALLER)
 - 1- 6" VALVE BOX
 - CONCRETE SUPPORT BLOCK SHALL BE FULL WIDTH OF THE TRENCH



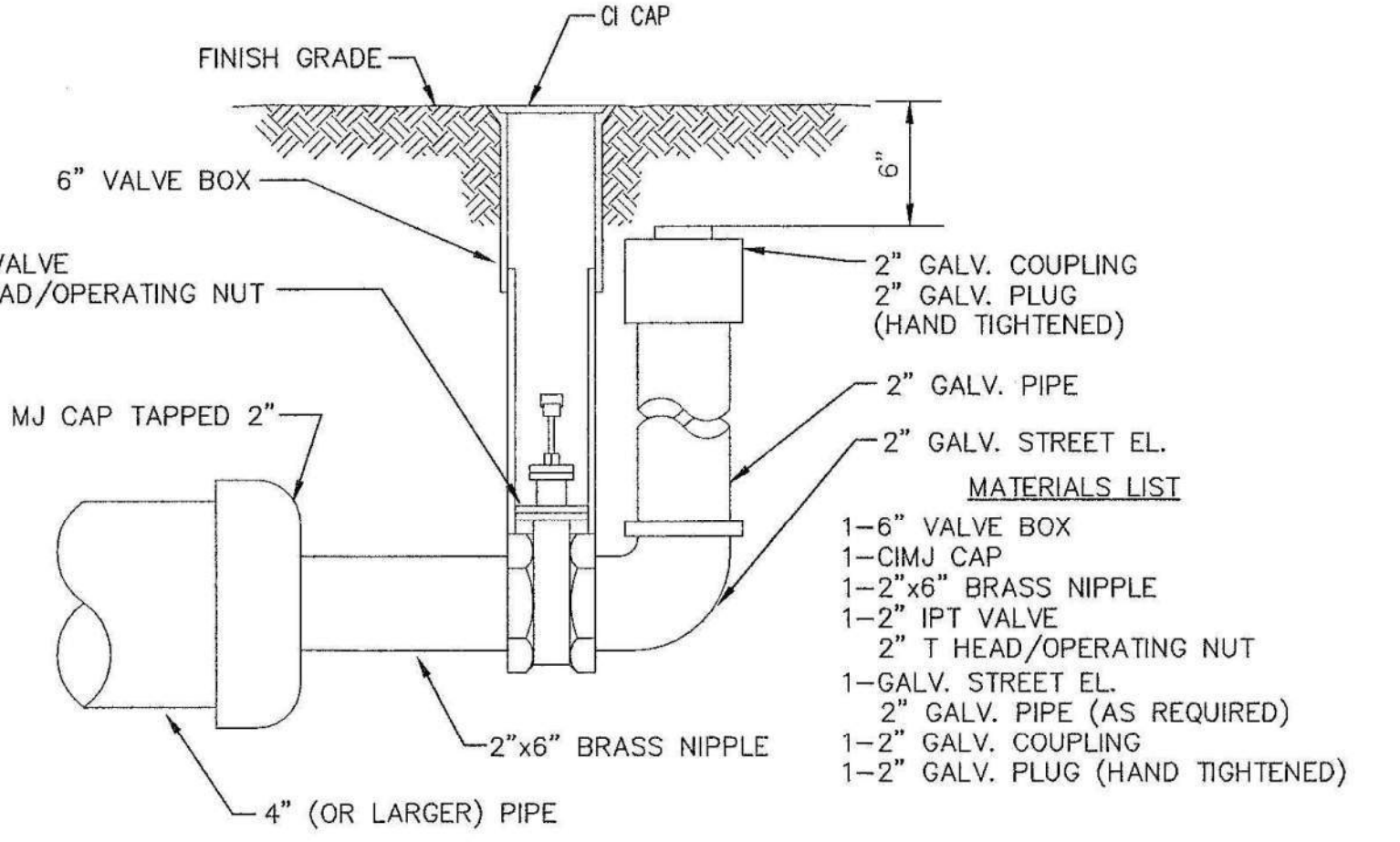
PROTECTIVE FILL DETAIL

MINIMUM PROTECTIVE FILL SHALL BE PROVIDED IN ALL INSTANCES WHERE COVER OVER THE PROP. WATER LINE IS LESS THAN 3' (COST SUBSIDIARY TO PIPE INSTALLATION)



VALVE STEM EXTENSION DETAIL

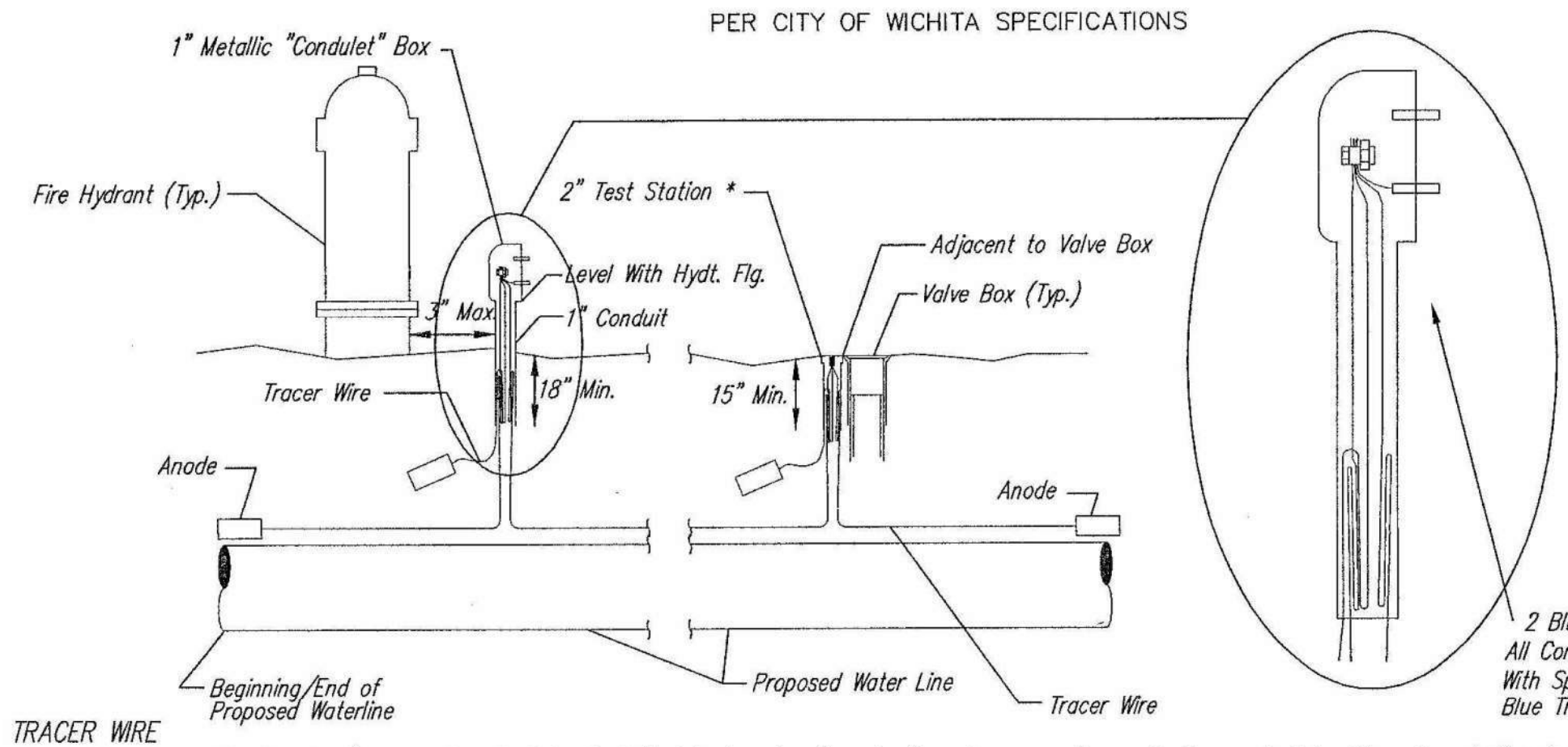
NOTE: ONE VALVE STEM EXTENSION FOR EACH VALVE BURIED GREATER THAN 5'



2" BLOWOFF ASSEMBLY

- * IF THE REQUIRED HYDRANT BURY IS IN EXCESS OF 5', BUT LESS THAN 7', CONTRACTOR SHALL USE STANDARD 5' HYDRANT BURY AND HYDRANT BARREL EXTENSIONS AS NECESSARY. IF THE REQUIRED HYDRANT BURY IS GREATER THAN 7', CONTRACTOR SHALL USE 5' HYDRANT BURY, 2-MJ 90° BENDS, 6" ANCHOR COUPLING AND 6" DICL PIPE AS NECESSARY FOR VERTICAL ADJUSTMENT. THE CONTRACTOR SHALL PROVIDE ADEQUATE THRUST BLOCKING AT HYDRANT AND MEGALUGS, OR SIMILAR RESTRAINT BETWEEN 90° BENDS TO SECURE ALL FITTINGS DURING TESTING AND OPERATION. THE CONTRACTOR SHALL PROVIDE A VALVE STEM EXTENSION PER DETAIL THIS SHEET.
- ** CAUTION: WEEP HOLES TO BE KEPT CLEAR DURING CONSTRUCTION AND BACKFILL. CONCRETE FOR THRUST BLOCKING SHALL NOT OBSTRUCT WEEP HOLES. PLACE 1 CUBIC FOOT OF RIVER WASHED PEA GRAVEL AROUND EACH WEEP HOLE.
- # CONCRETE THRUST BLOCKING SHALL BE KEPT CLEAR OF BOLTS, NUTS, AND MJ ACCESSORIES.

FIRE HYDRANT ASSEMBLY PER CITY OF WICHITA SPECIFICATIONS



TRACER WIRE
Conductive type pipe locator/tracer wire shall be installed to locate all waterline pipe regardless of pipe material. The wire shall extend the entire length of the proposed pipe. The wire shall be taped to the waterline and pulled with the pipe. A waterproof connector shall be used at splice locations. Test stations shall be installed adjacent to all fire hydrants along the waterline and at blowoffs or valves near the ends of waterlines. Any exception to the location shall be approved by the engineer. At each test station, the tracer wire shall be connected to a 3 lb. Zinc or magnesium anode. Anodes shall also be attached to the tracer wire at both the beginning and the end of the proposed waterline. A typical layout of the tracer wire and test station is provided in the above figure.

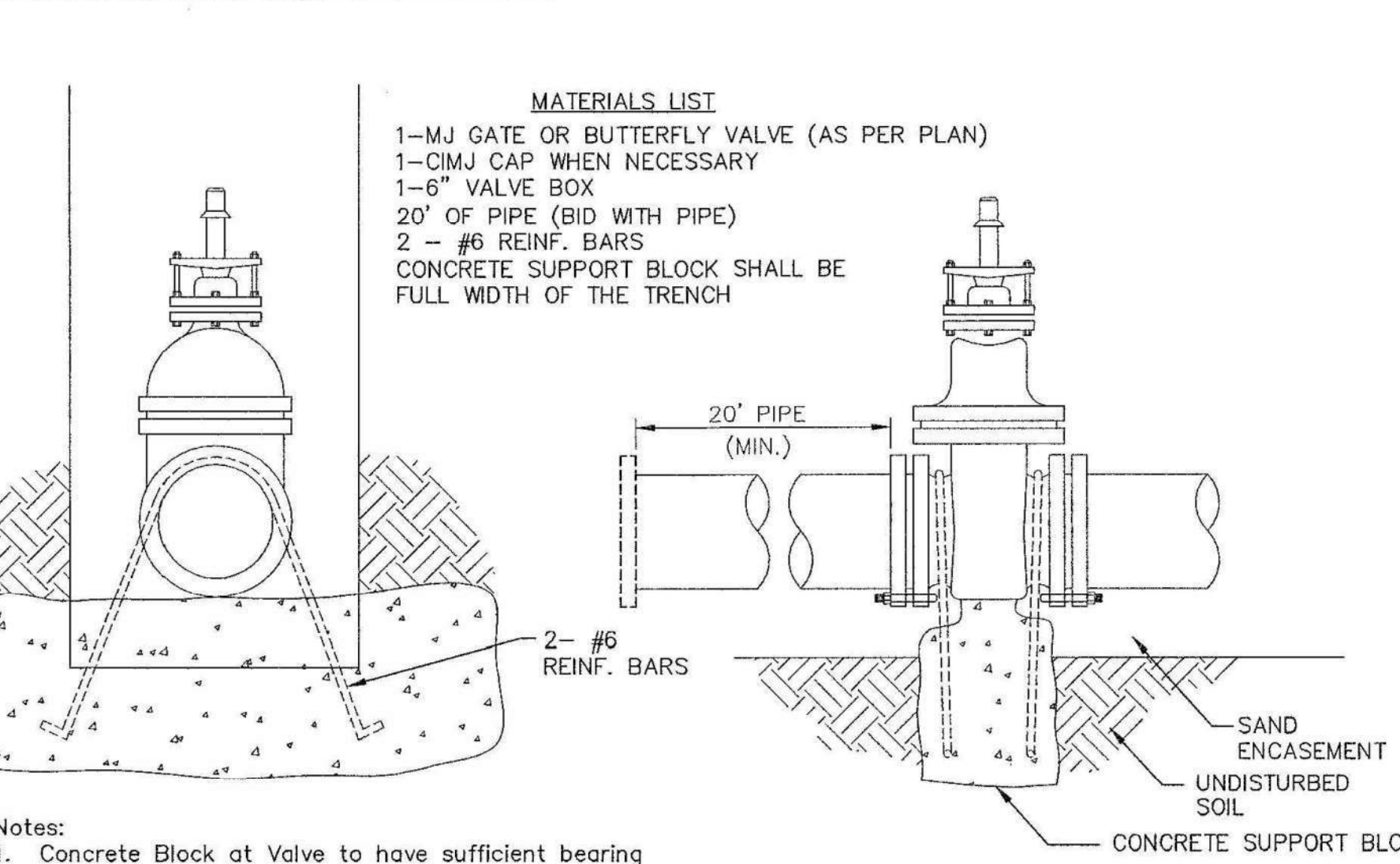
WIRE
The tracer wire shall be Blue No. 12 AWG CCS with 3045 mil HDPE insulation. The insulation shall be heat, oil, and gasoline resistant as manufactured by Temple Electric or approved equal. To allow for grade adjustment, a minimum of 12" of excess wire shall be coiled at the bottom of the test station for all wires. The insulation sheathing shall be removed such that 1" bare copper wire at all points of connection. Contractor shall attach wire being installed with proposed water main to any tracer wire installed with adjacent waterline projects.

TEST STATIONS
A complete list of approved Tracer Wire can be found on City of Wichita's website at www.wichita.gov. The test station for fire hydrant applications shall be a 1 inch galvanized "condulet" style test station as manufactured by AGR Industries with a removable solid cover having two leads extending from the face or approved equal. The test station for valve applications shall be 2 inch flush style test station T2PS3B as manufactured by HANDLEY Industries or approved equal. The "condulet" style test station shall be attached to a 1 inch rigid galvanized conduit with a minimum length of 36" and plastic end bushing. The flush style shall have the word "WATER" stamped or molded into the lid. All test stations shall be manufactured using molded blue tops or sufficiently coated with blue enamel paint. The tracer wire and the anode wire shall be installed to allow 10 inches of wire within the test station. In concrete environments such as sidewalks or in the downtown area the contractor shall use the flush style test station. The location of all test stations shall be approved by the engineer, recorded, and shown in the as-built drawings.

ANODES
The anodes shall be 3 lb. bare zinc or magnesium. The anodes shall be buried at the same elevation as the waterline at each test station. The anodes shall be connected to 12 AWG ccs which shall be extended to the test station.

TRACER WIRE DETAIL

COST IS SUBSIDIARY TO PIPE INSTALLATION



- Notes:**
- Concrete Block at Valve to have sufficient bearing in undisturbed soil to prevent thrust movement as shown in table at right. Field Engineer to determine thrust loading of undisturbed soil and final size of thrust block.
 - The thrust block shall be constructed such that bolts, nuts, and other MJ accessories are kept clear of concrete.
 - All valves at dead ends and at other locations as called out on the plans shall be blocked as shown here.

THRUST AT VALVES	
VALVE	THRUST AT 150 #/sq. in.
4"	1809 lbs.
6"	4245 lbs.
8"	7540 lbs.
12"	16965 lbs.

ANCHORED VALVE ASSEMBLY, SPECIAL



STANDARD WATER ASSEMBLY DETAIL

CITY ENGINEER
GARY JANZEN, P.E.

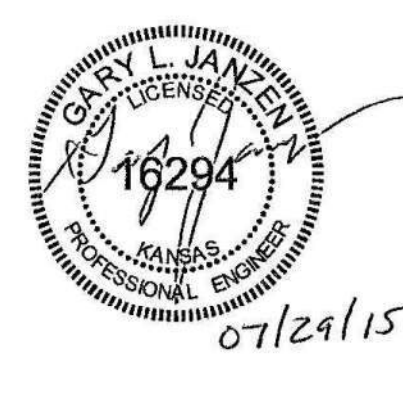
PROJECT NUMBER
2006 PPW

OCA NUMBER
(607853)

DATE

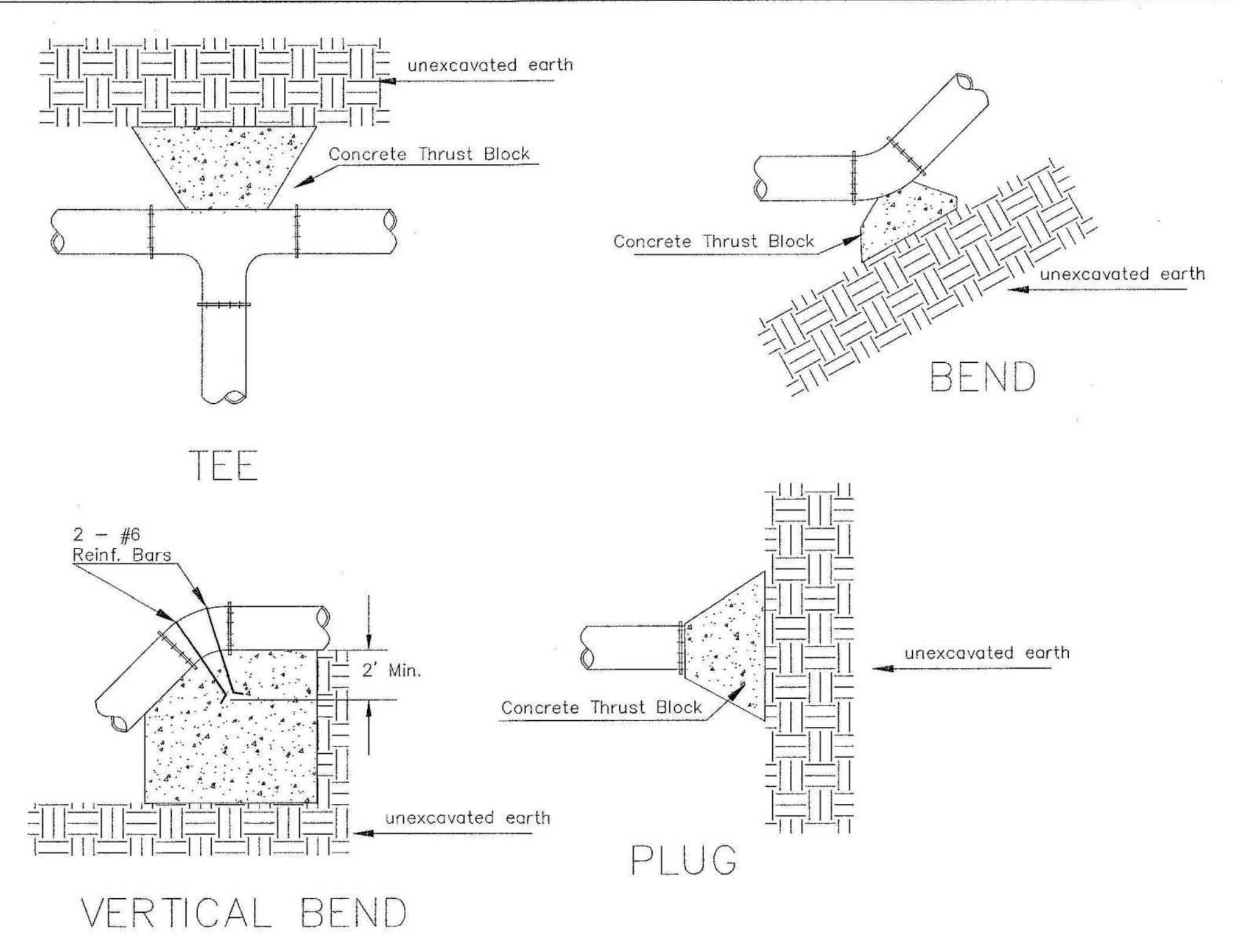
CITY ENGINEER'S OFFICE
CITY HALL - SEVENTH FLOOR
455 NORTH MAIN STREET
WICHITA, KANSAS 67202-1620
(316) 268-4501

SHEET
C3.6



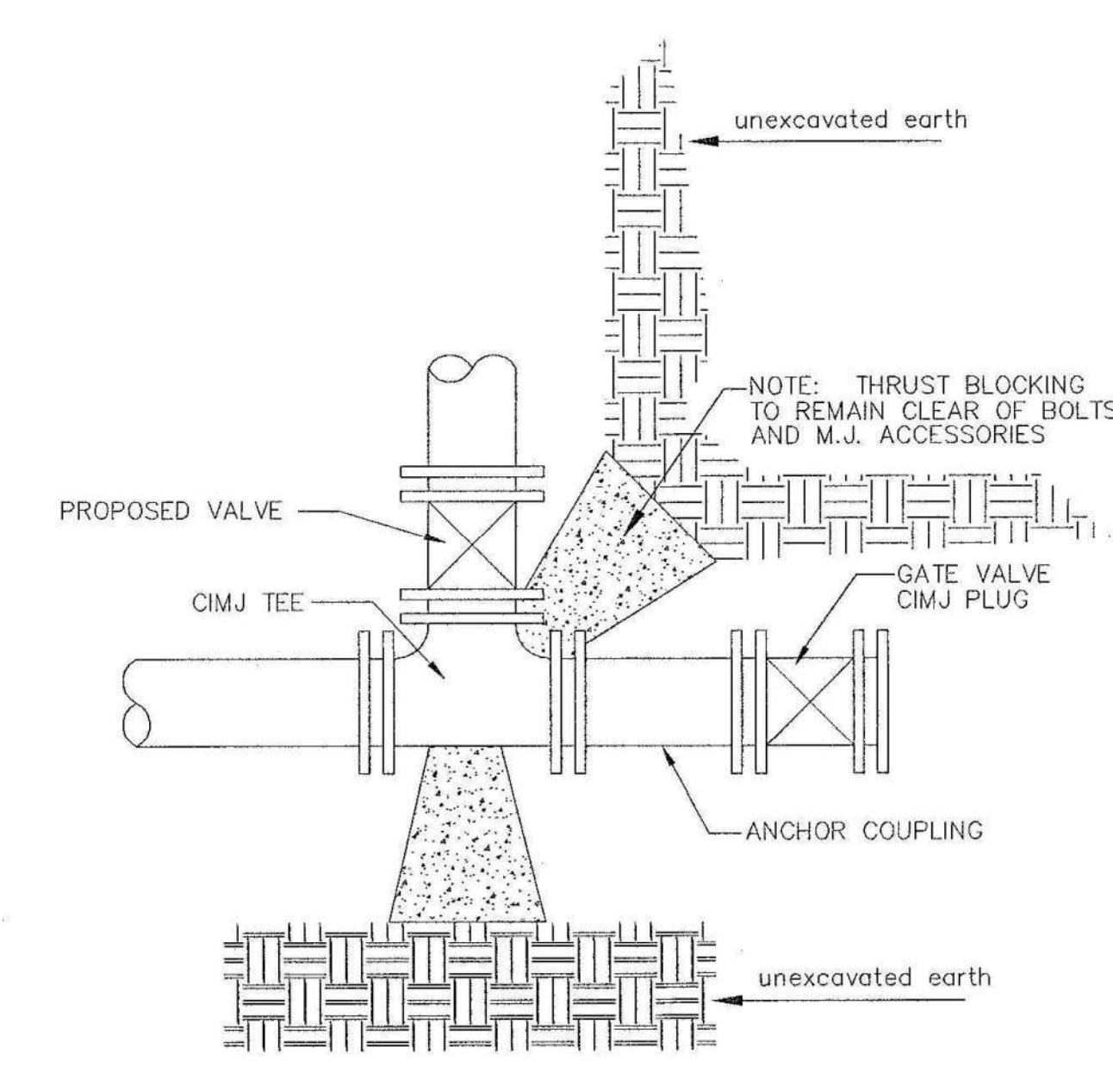
REVISED: JULY 2015

WL-101



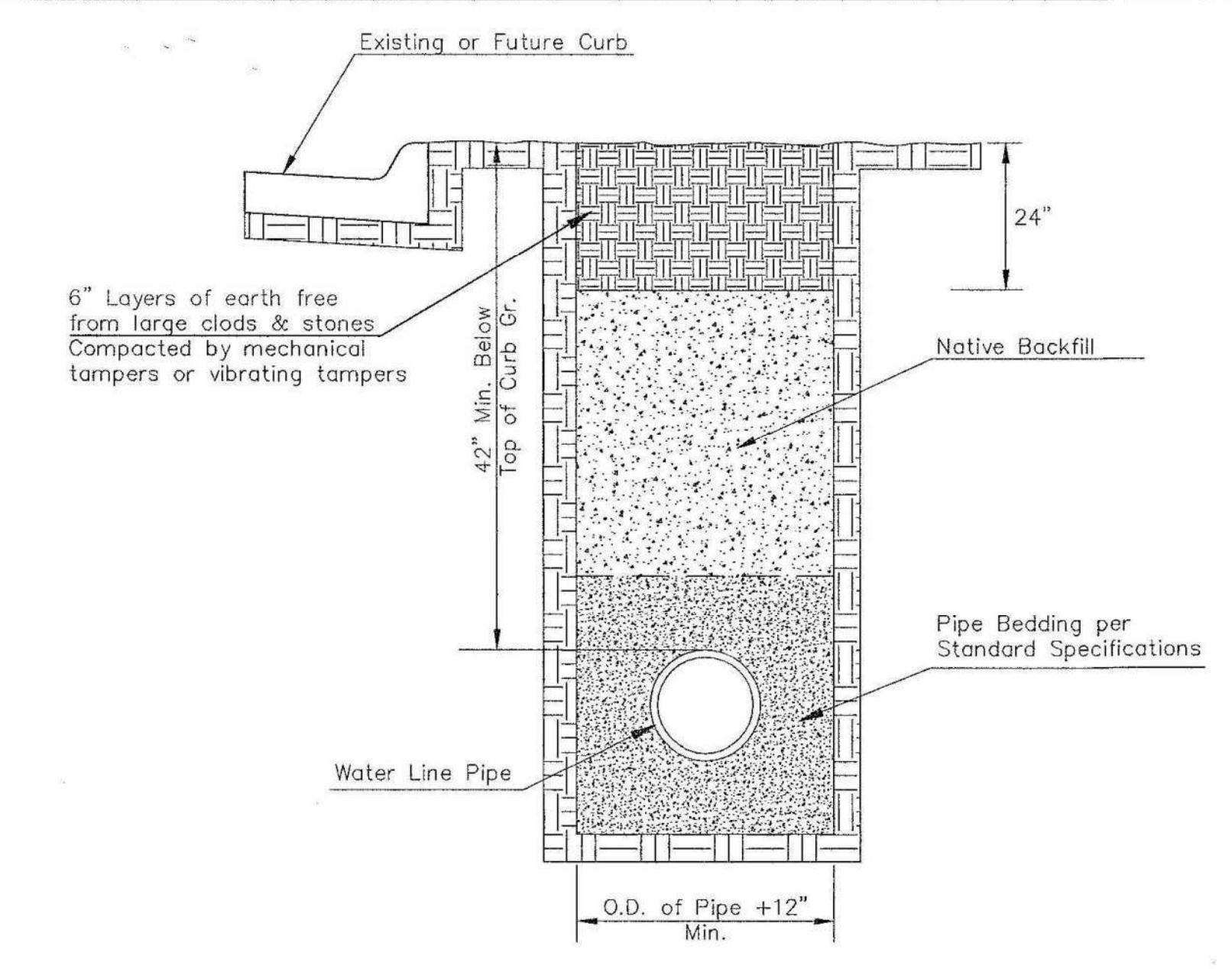
PIPE SIZE	THRUST AT FITTINGS IN TONS-AT 150#/IN ² P						
	PLUG	90°	45°	22 1/2°	11 1/4°	TEE	
6"	2.8	3.95	2.15	1.09	.55	2.8	
8"	4.9	6.95	3.75	1.90	.96	4.9	
12"	11.4	16.1	8.75	4.45	2.25	11.4	
16"	20.15	28.5	15.4	7.85	3.95	20.15	
20"	31.15	44.0	23.85	12.15	6.10	31.15	
24"	44.55	63.0	34.1	17.4	8.75	44.55	

TYPICAL THRUST BLOCKS

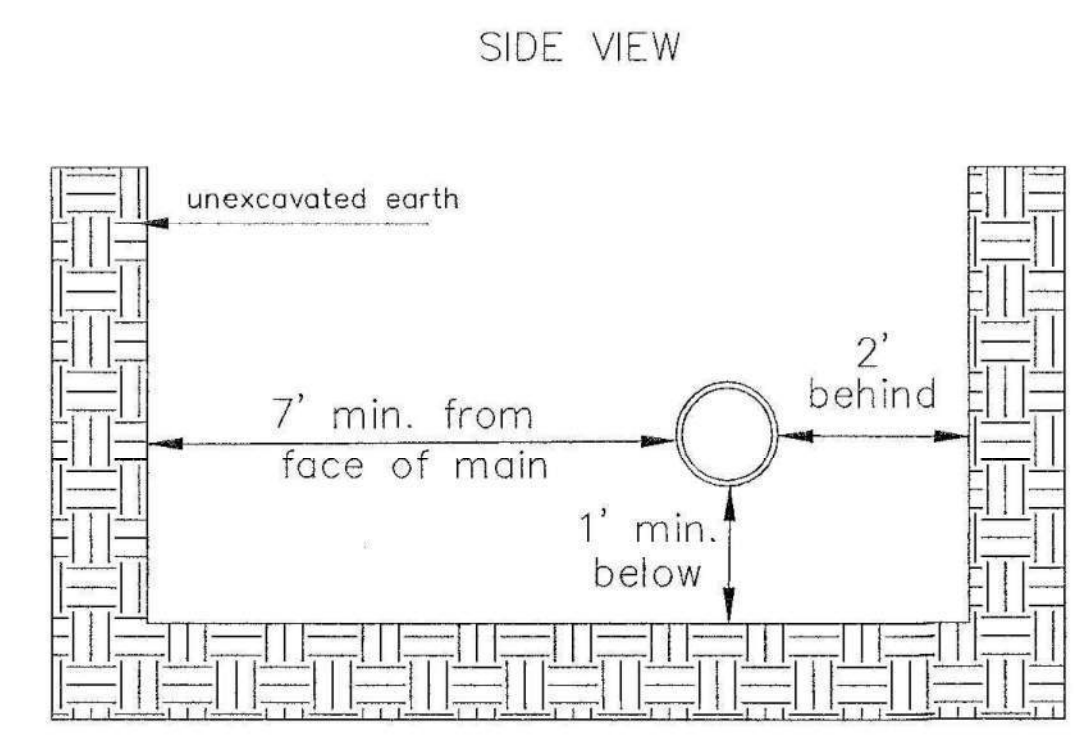


KEY BLOCK DETAIL

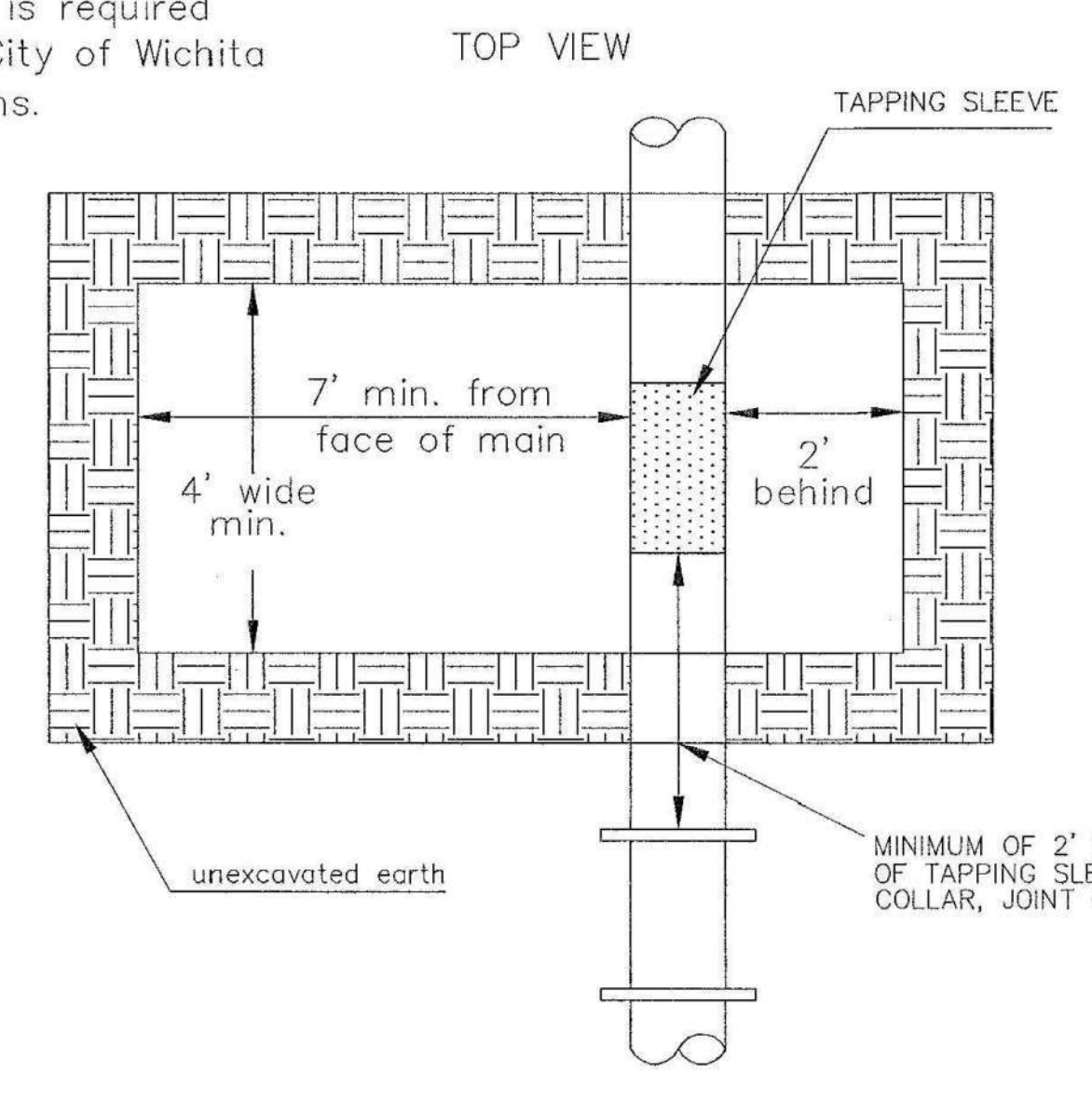
* PLANS GOVERN
UNLESS OTHERWISE NOTED ON PLANS



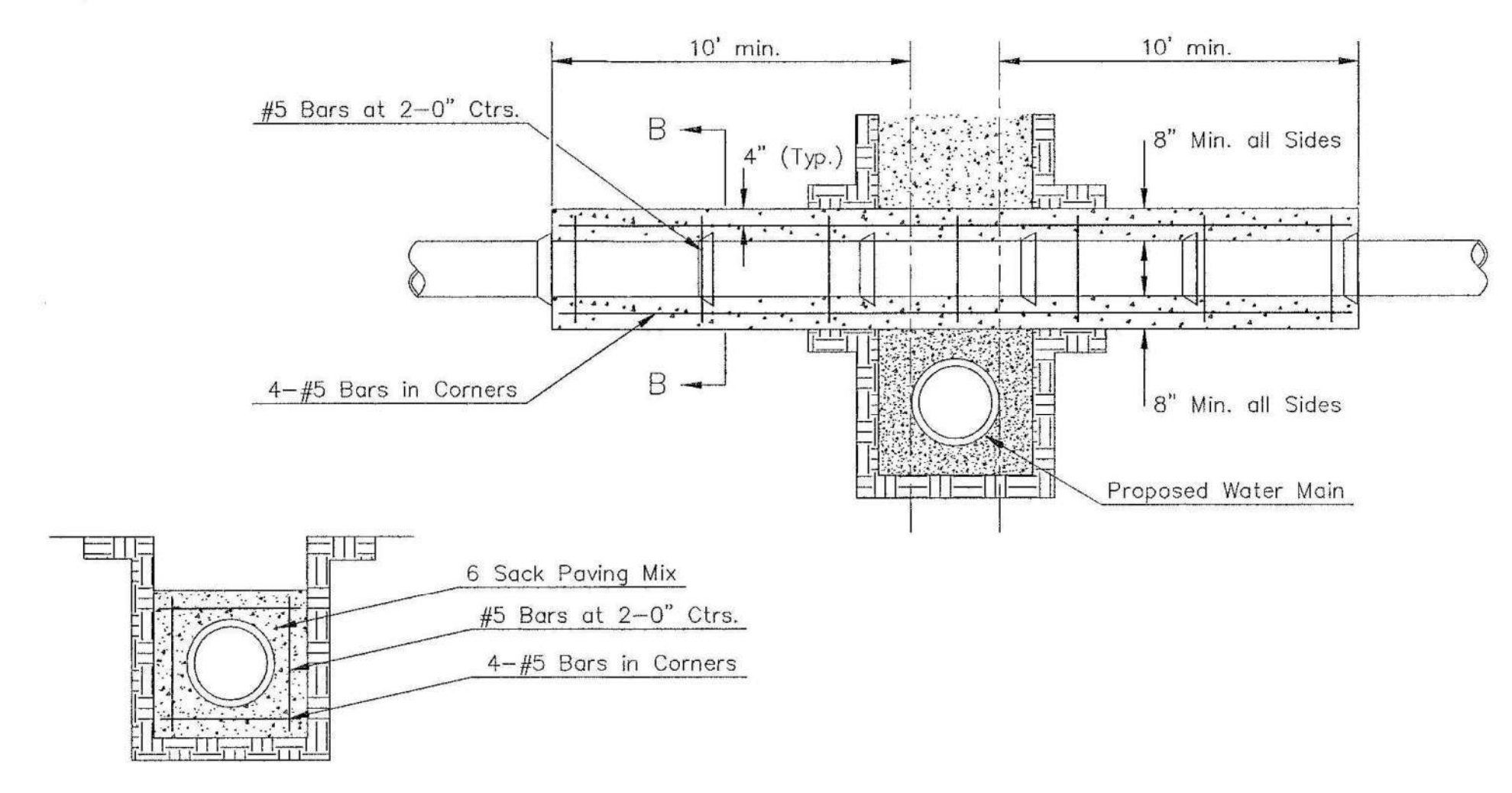
TRENCH COMPACTION IN ROAD RIGHT-OF-WAY



Note: When shoring is required it is to be per The City of Wichita Standard Specifications.



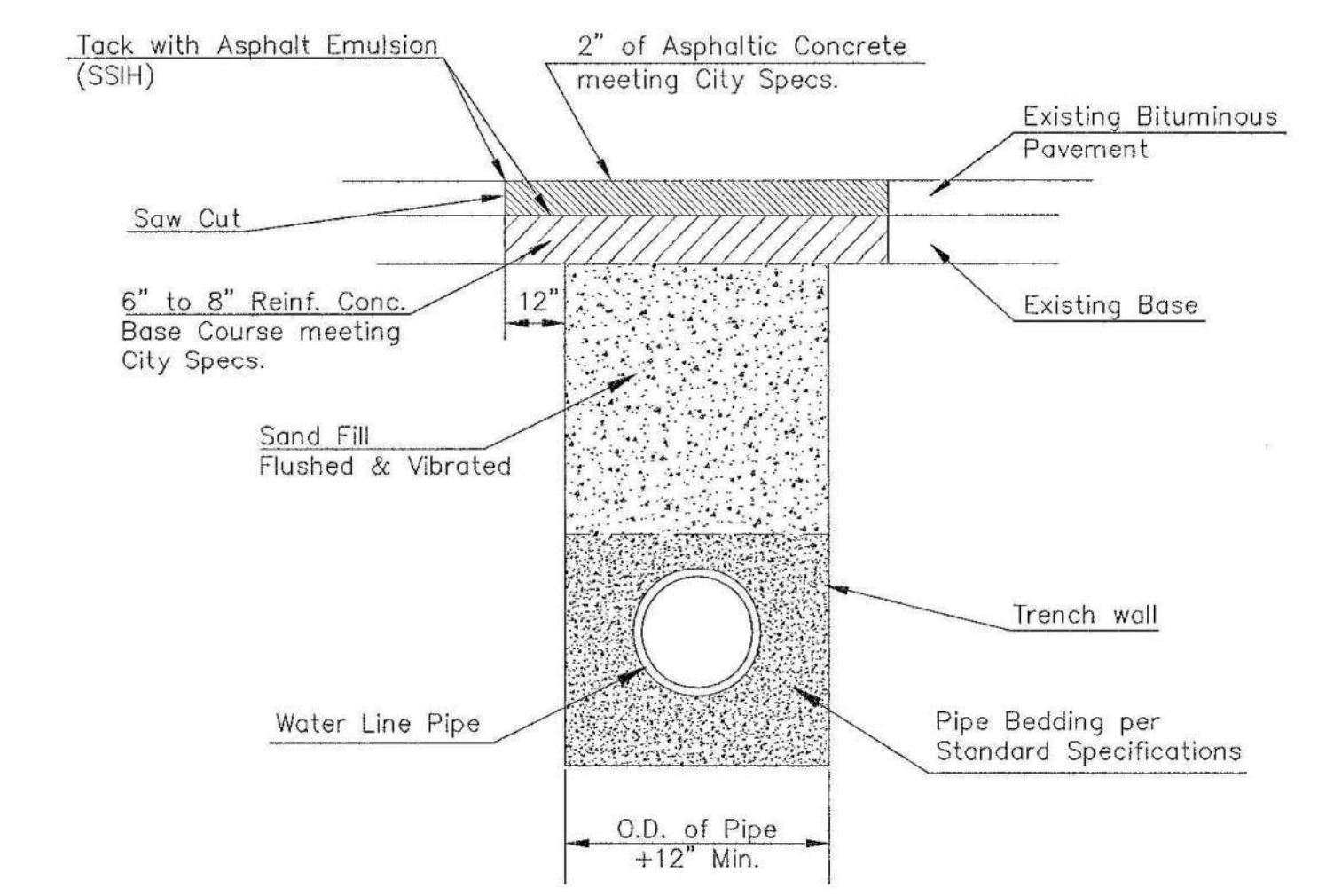
EXCAVATION FOR WET TAP



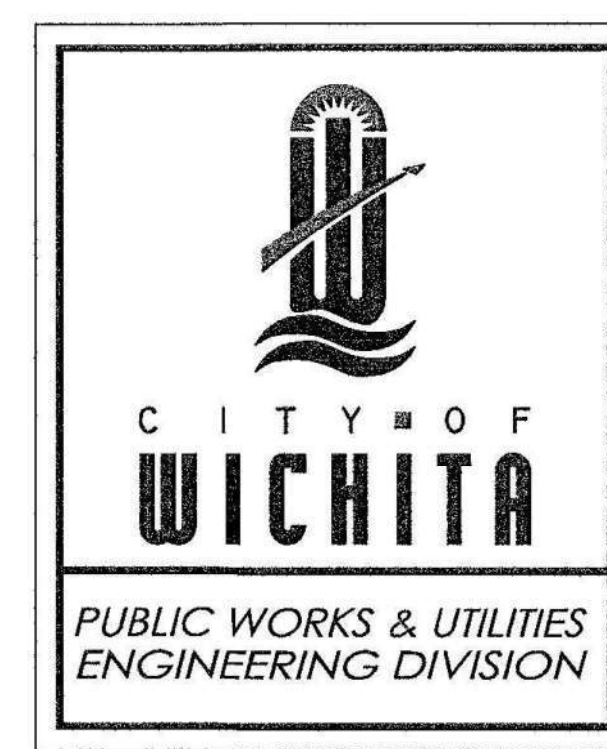
SECTION B-B

REINFORCED CONCRETE ENCASUREMENT OF SANITARY SEWER

Note: Encasement to begin and end at a Bell on Sanitary Sewer Pipe.



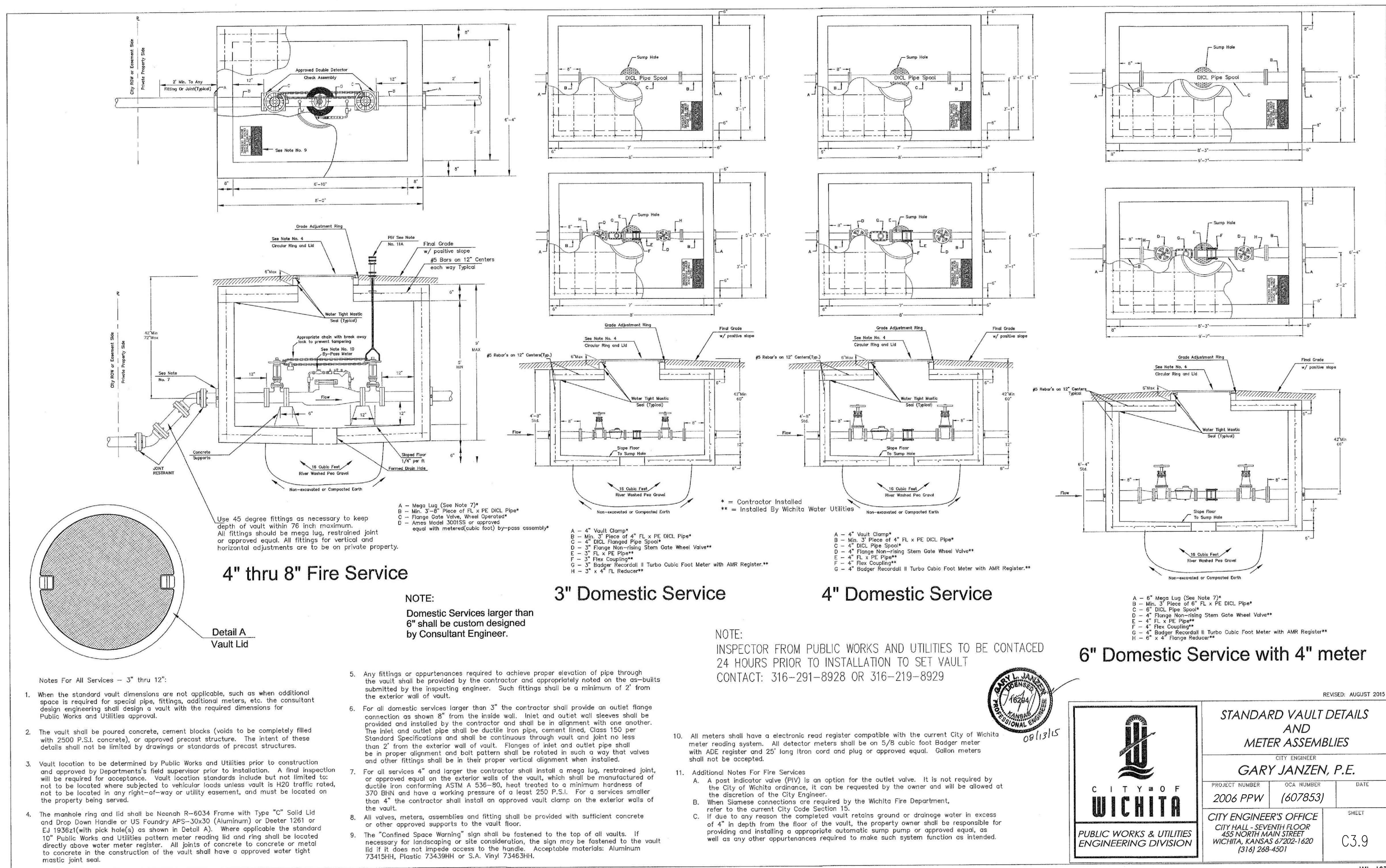
PAVEMENT REPLACEMENT & TRENCH COMPACTION UNDER EXISTING AND PROPOSED CITY ROADS



REVISED: JULY 2015

MISCELLANEOUS WATER DETAILS		
CITY ENGINEER GARY JANZEN, P.E.		
PROJECT NUMBER 2006 PPW	OCA NUMBER (607853)	DATE
CITY ENGINEER'S OFFICE CITY HALL - SEVENTH FLOOR 455 NORTH MAIN STREET WICHITA, KANSAS 67202-1620 (316) 268-4501		SHEET C3.8

WL-104



REVISED: AUGUST 2015

CITY OF WICHITA
PUBLIC WORKS & UTILITIES
ENGINEERING DIVISION

STANDARD VAULT DETAILS AND METER ASSEMBLIES
CITY ENGINEER
GARY JANZEN, P.E.

PROJECT NUMBER 2006 PPW	OCA NUMBER (607853)	DATE
CITY ENGINEER'S OFFICE CITY HALL - SEVENTH FLOOR 455 NORTH MAIN STREET WICHITA, KANSAS 67202-1620 (316) 268-4501		SHEET C3.9

WL-103