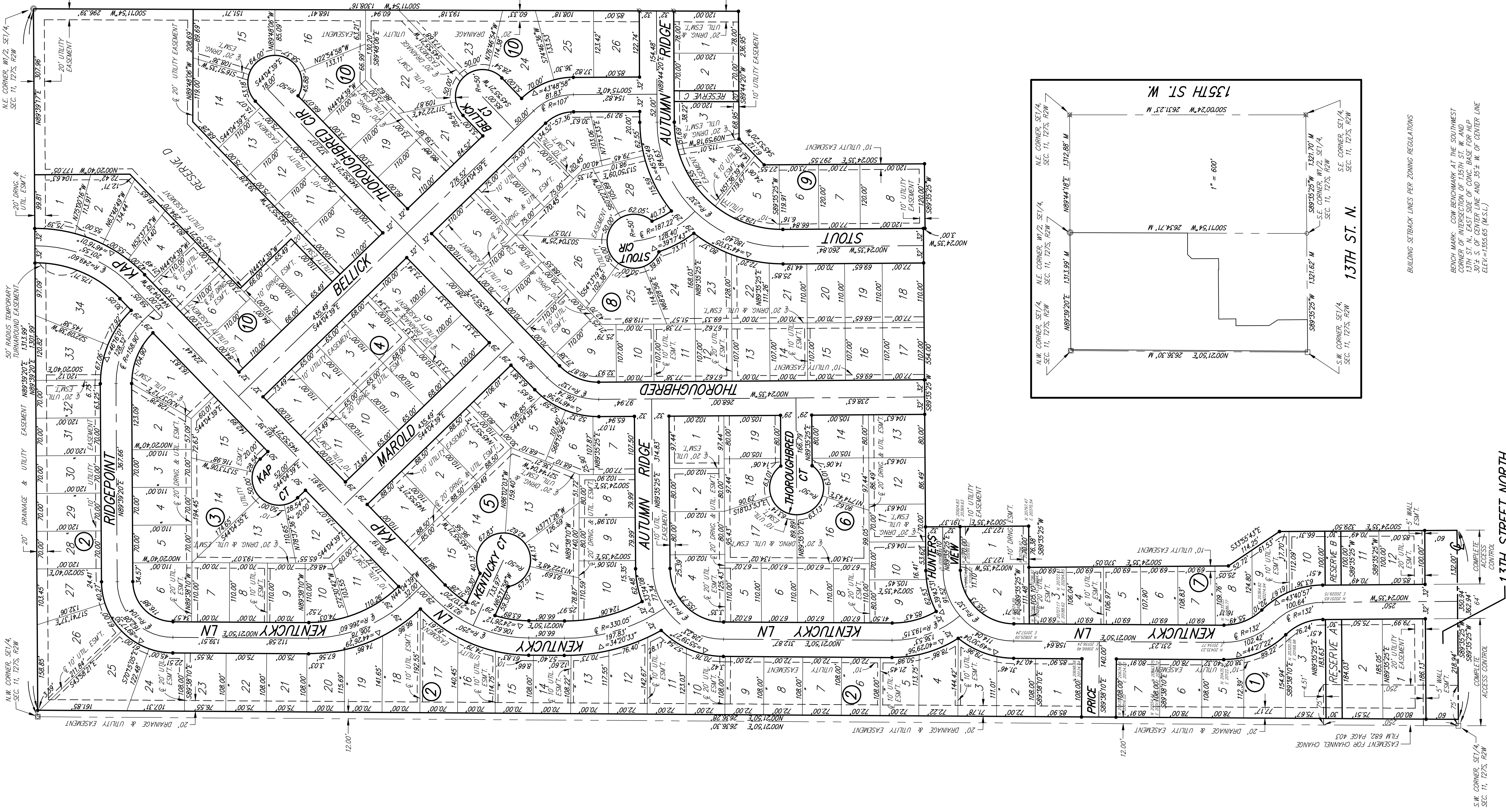


CHERYL'S HOLLOW SECOND ADDITION

Wichita, Sedgwick County, Kansas



BUILDING SETBACK LINES PER ZONING REGULATIONS

BENCHMARK: CORNER OF INTERSECTION OF 135TH ST. W. AND 137TH ST. W. BASE ELEVATION = 1355.65 (M.S.L.)

ON-SITE BENCHMARK: R.R. SPIKE ON NORTH FACE OF HIGHLINE FENCE. 137 FEET WEST AND 28 FEET SOUTH OF 135TH ST. W. BASE ELEVATION = 1355.16 (M.S.L.)

MINIMUM BUILDING PAD ELEVATION FOR LOWEST OPENING INTO STRUCTURES	LOT NO.	ELEVATION (A.G.M.D.)
	1, 2, 3, 4, 5, 6	1364.5
	7, 8, 9, 10, 11, 12	1364.0
	13, 14, 15, 16	1364.0
	17, 18, 19, 20, 21, 22, 23, 24, 25, 26, 27, 28, 29, 30, 31, 32, 33, 34	1364.0

- SYMBOL MARKER LEGEND**
- = STONE (FOUND)
 - ▣ = WALL IN CENTER OF STONE (FOUND)
 - = 1/2" IRON PIPE (FOUND)
 - ⊙ = 1" IRON PIPE (FOUND)
 - ⊗ = 1/2" REBAR W/BUSHMAN CAP (FOUND)
 - ⊗ = 3/4" IRON PIPE W/SIDOWICK COUNTY ALUMINUM CAP (FOUND)
 - = 5/8" REBAR W/PAB CAP (SET)

1" = 60'

(A) = ASSUMED
M = MEASURED

State of Kansas) SS
Sedgwick County)

We, Ruggles & Bohm, P.A., Land Surveyors in aforesaid county and state do hereby certify that, under the supervision of the undersigned, we have surveyed and platted "CHERYL'S HOLLOW SECOND ADDITION", Wichita, Sedgwick County, Kansas, and that the accompanying plat is a true and correct exhibit of the property surveyed, described as follows:

The west half of the SE1/4, Sec. 11, T27S, R21W of the 6th P.M., Sedgwick County, Kansas, EXCEPT that the west 12.00 feet, AND EXCEPT that part platted as Cheryl's Hollow, Wichita, Sedgwick County, Kansas.

All public easements and dedications are hereby vacated by virtue of K.S.A. 12-512(b).

Ruggles & Bohm, P.A.
Land Surveyor
Thomas C. Ruggles

Know all men by these presents that we, the undersigned, have caused the land described in the surveyor's certificate to be platted into Lots, Blocks, Reserves and Streets, to be known as "CHERYL'S HOLLOW SECOND ADDITION", Wichita, Sedgwick County, Kansas. Utility easements are hereby granted for the construction and maintenance of all public utilities. Drainage easements are hereby granted to the public as indicated for drainage purposes. Reserves "A, B and C" are hereby reserved for irrigation, landscaping, drainage, drainage structures and utilities confined to easements. Reserve "D" is here by reserved for irrigation, gazebos, playground structures, picnic areas/tables with canopies, walks, lighting, landscaping, berms, lakes, drainage, drainage structures, and utilities confined to easements. The Reserves shall be owned and maintained by the Home Owners Association for the addition. The streets are hereby dedicated to and for the use of the public. Access Controls as indicated are hereby granted to the appropriate governing body. The Temporary turnaround easement is hereby granted for the use of the public, and will expire upon extension of the street beyond the limits of this plat. A drainage plan has been developed for this plat: all drainage easements, rights-of-way, or reserves shall remain at established grades, or as modified with the approval of the City Engineer, and unobstructed to allow for the conveyance of storm water.

Rick Thompson Construction, Inc.
Rick Thompson
President

State of Kansas) SS
Sedgwick County)

The foregoing instrument acknowledged before me, this _____ day of _____, 2006, by Rick Thompson, President of Rick Thompson Construction, Inc., on behalf of the corporation.

My appointment expires _____
Mildred E. Franz
Notary Public

This plat of "CHERYL'S HOLLOW", Wichita, Sedgwick County, Kansas, has been submitted to and approved by the Wichita-Sedgwick County Metropolitan Area Planning Commission, Wichita, Kansas.
Dated this _____ day of _____, 2006.
Wichita-Sedgwick County Metropolitan Area Planning Commission

Harold L. Warner, Jr.
Chair
John L. Schlegel
Secretary

This plat approved and all dedications shown hereon accepted by the City Council of the City of Wichita, Kansas, this _____ day of _____, 2006.

At the Direction of the City Council
Carlos Moyans
Mayor
Karen Sublett
City Clerk

Reviewed in accordance with K.S.A. 58-2005 on this _____ day of _____, 2006.
Tricia L. Robello, LS #1246
Deputy County Surveyor
Sedgwick County Kansas

Entered on transfer record this _____ day of _____, 2006.
Don Brace
County Clerk

State of Kansas) SS
Sedgwick County)

This is to certify that this plat has been filed for record in the office of the Register of Deeds, this _____ day of _____, 2006, at _____ o'clock _____ M., and is duly recorded.

Bill Meek
Register of Deeds
Tonya Buckingham
Deputy