

GENERAL NOTES

- THE CONTRACTOR SHALL COMPLY WITH ALL APPLICABLE SAFETY REGULATIONS. ALL CONSTRUCTION SHALL BE COMPLETED FOLLOWING CURRENT CITY STANDARD SPECIFICATIONS AND SPECIAL PROVISIONS.
- THE CONTRACTOR WILL BE REQUIRED TO PROVIDE NOTICE TO UTILITY COMPANIES A MINIMUM OF SEVENTY-TWO (72) HOURS PRIOR TO ANY EXCAVATION, AS FOLLOWS:
KANSAS ONE-CALL 687-2470
THE CONTRACTOR MUST NOTIFY THE FOLLOWING IN CASE OF AN EMERGENCY:
AT&T 1-800-246-8464
BLACK HILLS ENERGY (GAS) 1-800-694-8989
CITY OF WICHITA WATER 1-316-268-4555
CITY OF WICHITA SEWER 1-316-268-4073
CITY OF WICHITA STORMWATER 1-316-268-4090
CITY OF WICHITA TRAFFIC 1-316-268-4034
CDX COMMUNICATIONS 1-888-249-3530
KANSAS GAS SERVICE 1-888-482-4950
WESTAR ENERGY 1-800-544-4857
- UTILITY SERVICE LINES, POLES, ETC. ARE TO BE ADJUSTED AS NECESSARY BY OTHERS PRIOR TO CONSTRUCTION UNLESS THE PLANS SPECIFICALLY CALL FOR THEIR ADJUSTMENT BY ITS OWNER DURING CONSTRUCTION. EXISTING UTILITIES AND THEIR LOCATION, AS SHOWN ON THE PLAN, REPRESENT THE BEST INFORMATION OBTAINABLE FOR DESIGN. THE CONTRACTOR WILL BE REQUIRED TO WORK AROUND EXISTING UTILITIES WITHIN THE RIGHT-OF-WAY WHICH DO NOT CONFLICT WITH PROPOSED CONSTRUCTION.
- RUBBLE FROM THE REMOVAL OF MISCELLANEOUS STRUCTURES AND EXCESS EXCAVATION WHICH IS TO BE WASTED SHALL BE DISPOSED OF ON SITES TO BE PROVIDED BY THE CONTRACTOR. THESE SITES SHALL BE APPROVED BY THE ENGINEER AS TO SUITABILITY, APPEARANCE AND SITE LOCATION. LOCATIONS, IN THE OPINION OF THE ENGINEER, THAT WILL LEAVE AN UNSIGHTLY APPEARANCE WILL NOT BE APPROVED. ALL DISPOSAL SITES MUST BE APPROVED BY THE KANSAS DEPARTMENT OF HEALTH AND ENVIRONMENT. MATERIAL EITHER STOCKPILED OR DISPOSED OF IN A FLOOD PLAIN WOULD REQUIRE A KANSAS STATE BOARD OF AGRICULTURE PERMIT. ANY MATERIAL DUMPED IN WATERS OF THE UNITED STATES OR WETLANDS IS SUBJECT TO U.S. CORPS OF ENGINEERS PERMITTING REGULATIONS. ANY MATERIAL BURIED OR STOCKPILED BEYOND APPROVED CONSTRUCTION LIMITS WOULD REQUIRE ADDITIONAL ARCHAEOLOGICAL INVESTIGATIONS UNLESS BURIED IN A PREVIOUSLY APPROVED BORROW LOCATION.
- TREES AND SHRUBS IN PUBLIC RIGHT-OF-WAY WHICH ARE IN DIRECT CONFLICT WITH PROPOSED NEW CONSTRUCTION SHALL BE REMOVED BY THE CONTRACTOR WITH THE ENGINEER'S APPROVAL. TREES AND SHRUBS WHICH ARE NOT IN DIRECT CONFLICT WITH PROPOSED NEW CONSTRUCTION SHALL BE SAVED AND PROTECTED FROM DAMAGE.
- THE CONTRACTOR SHALL GIVE ALL PROPERTY OWNERS AND/OR TENANTS OF DEVELOPED PROPERTY ADJUTING THE CONSTRUCTION OF THIS PROJECT A MINIMUM OF TEN (10) DAYS NOTICE PRIOR TO START OF CONSTRUCTION.
- THE CONTRACTOR SHALL BE RESPONSIBLE FOR PRESERVING PROPERTY IRONS. THE CONTRACTOR WILL BE REQUIRED TO RE-ESTABLISH ANY PROPERTY IRONS WHICH ARE DAMAGED OR DESTROYED BY HIS CONSTRUCTION OPERATIONS. SUCH IRONS SHALL BE RE-ESTABLISHED BY A LICENSED LAND SURVEYOR IN ACCORDANCE WITH STATE LAWS.
- THE WATER DISTRIBUTION DIVISION SHALL FIELD LOCATE WATER VALVES ONE TIME DURING CONSTRUCTION WHEN REQUESTED BY THE CONTRACTOR. IT SHALL BE THE CONTRACTOR'S RESPONSIBILITY TO PRESERVE SUCH FIELD LOCATIONS DURING THE CONSTRUCTION PROCESS. WATER VALVES, VALVE BOXES OR FIRE HYDRANTS DAMAGED DURING CONSTRUCTION SHALL BE REPAIRED BY CONTRACTOR AT HIS OWN EXPENSE. VALVE BOXES AND WATER METERS WITHIN THE PROJECT LIMITS SHALL BE ADJUSTED TO MATCH FIELD GRADES.
- THE CONTRACTOR SHALL NOTIFY THE CONSULTANT ENGINEER AND TOM MASON WITH THE CITY AT 316-268-4574 WITH THE ANTICIPATED CONSTRUCTION START DATE AND NOTIFY THEM OF PROJECT COMPLETION. STAKING FOR THIS PROJECT WILL BE THE RESPONSIBILITY OF THE CONTRACTOR. MKEC ENGINEERING, INC. WILL PROVIDE INSPECTION AT NO EXPENSE TO THE CONTRACTOR.
- IF TRAFFIC WILL BE IMPACTED BY CONSTRUCTION, A TRAFFIC CONTROL PLAN MUST BE SUBMITTED AND APPROVED BY THE CITY TRAFFIC ENGINEER, BRIAN COON AT traffic@wichita.gov BEFORE CONSTRUCTION CAN BEGIN. THE CONTRACTOR SHALL BE RESPONSIBLE FOR ALL TRAFFIC CONTROL MEASURES TO FACILITATE CONSTRUCTION. ALL CONSTRUCTION ZONE MARKINGS AND SIGNAGE SHALL CONFORM TO THE LATEST VERSION OF THE MANUAL ON UNIFORM TRAFFIC CONTROL DEVICES (MUTCD) AS PUBLISHED BY THE US DEPT. OF TRANSPORTATION, FEDERAL HIGHWAY ADMINISTRATION. ALL COSTS ASSOCIATED WITH CONSTRUCTION MARKINGS AND SIGNAGE SHALL BE THE CONTRACTOR'S RESPONSIBILITY.
- ALL ELEVATIONS SHOWN ARE U.S.G.S. DATUM (NAVD 88).
- ALL AREAS DISTURBED DURING CONSTRUCTION THAT WILL NOT BE UNDER PROPOSED PAVEMENT SHALL BE RESTORED TO MATCH EXISTING CONDITIONS WITHIN RIGHT-OF-WAY, UNLESS OTHERWISE NOTED IN PLANS.
- FOLLOW THE LINK BELOW FOR SPECIFIC CITY OF WICHITA STANDARD DETAILS: <http://www.wichita.gov/government/departments/pwu/standards/construction>
WATER DETAILS: WL101
EROSION DETAILS: SW501, SW 502, SW503, SW504, & SW505
- CONTRACTOR SHALL LIMIT THE EXTENT OF TRENCH OPEN OVERNIGHT AND WEEKENDS TO LESS THAN 50 FEET.
- EXISTING UTILITIES AND THEIR LOCATION, AS SHOWN ON THE PLANS REPRESENT THE BEST INFORMATION OBTAINABLE FOR DESIGN. LOCATION INFORMATION HAS BEEN OBTAINED FROM THE VARIOUS COMPANIES AND IS EITHER FROM COMPANY UTILITY DRAWINGS OR COMPANY PROVIDED FIELD LOCATIONS. THE PLAN LOCATIONS SHOWN ARE NOT GUARANTEED. ADDITIONAL EXISTING UTILITIES MAY ALSO BE ENCOUNTERED.
- OPENING AND CLOSING OF WATER VALVES SHALL BE DONE SLOWLY TO PREVENT DAMAGE TO THE WATER DISTRIBUTIONS SYSTEM FROM WATER HAMMER. ALL VALVES CLOSED BY THE CONTRACTOR MUST BE REOPENED AS NEW CONSTRUCTION PERMITS. THE PROJECT INSPECTOR MUST ASCERTAIN THAT ANY VALVE CLOSED BY THE CONTRACTOR IS REOPENED. THE CONTRACTOR WILL BE PERMITTED TO OPERATE WATER VALVES ONLY WHEN THE PROJECT INSPECTOR ASSIGNED TO THE PROJECT IS PRESENT.
- THE CONTRACTOR SHALL LAY A TRACER WIRE AND SET TEST STATIONS ALONG ALL WATER PIPE INSTALLED IN ACCORDANCE WITH CITY SPECIFICATIONS AND TRACER WIRE DETAIL ON DETAIL SHEET WL-101.
- THE CONTRACTOR SHALL PROVIDE MATERIALS FOR TEMPORARY BLOWOFF OF WATERLINES. CONNECTIONS TO THE EXISTING WATERLINE(S) SHALL BE MADE WITH CLEAN, SWABBED PIPE AND FLUSHED UPON COMPLETION OF TIE-INS
- REQUESTS FOR SHORT TERM WATER INTERRUPTIONS SHALL BE MADE TO THE CITY WATER DISTRIBUTION DIVISION AND WILL BE SUBJECT TO THEIR APPROVAL. THE CONTRACTOR SHALL GIVE WRITTEN NOTICE TO ANY PROPERTY OWNER, BUSINESS, AND/OR TENANTS THAT WILL HAVE WATER SERVICE INTERRUPTED AT LEAST 5 DAYS IN ADVANCE. SUCH NOTIFICATIONS SHOULD INDICATE THE TIME AND DATE THAT THE WATER WILL BE TURNED OFF AND WHEN THE SERVICE WILL BE RESTORED. NO BUSINESS, PROPERTY OWNER, AND/OR TENANTS SHALL BE WITHOUT WATER SERVICE FOR MORE THAN 8 HOURS. PROPOSED TIE IN LOCATIONS WHICH WILL AFFECT WATER SERVICE TO PROPERTY OWNERS SHALL BE PERFORMED DURING NON-PEAK HOURS.
- THE CONTRACTOR MUST SCHEDULE THE CONNECTIONS TO THE EXISTING MAIN WITH THE CITY SUCH THAT THERE IS A MINIMUM DISRUPTION OF SERVICE. CONNECTIONS SHALL BE MADE DURING PERIODS OF LOW WATER USAGE. THE CONTRACTOR SHALL SUBMIT HIS PROPOSED SCHEDULE FOR COMPLETING WORK FOR CITY APPROVAL AT LEAST 10 DAYS PRIOR TO BEGINNING CONSTRUCTION.

PRIVATE WATER DISTRIBUTION SYSTEM IMPROVEMENTS

TO SERVE

17TH ST. ENTRY DRIVE/PARKING

A PORTION OF

WSU - INNOVATION CAMPUS

PROJECT NO. 1894PPW

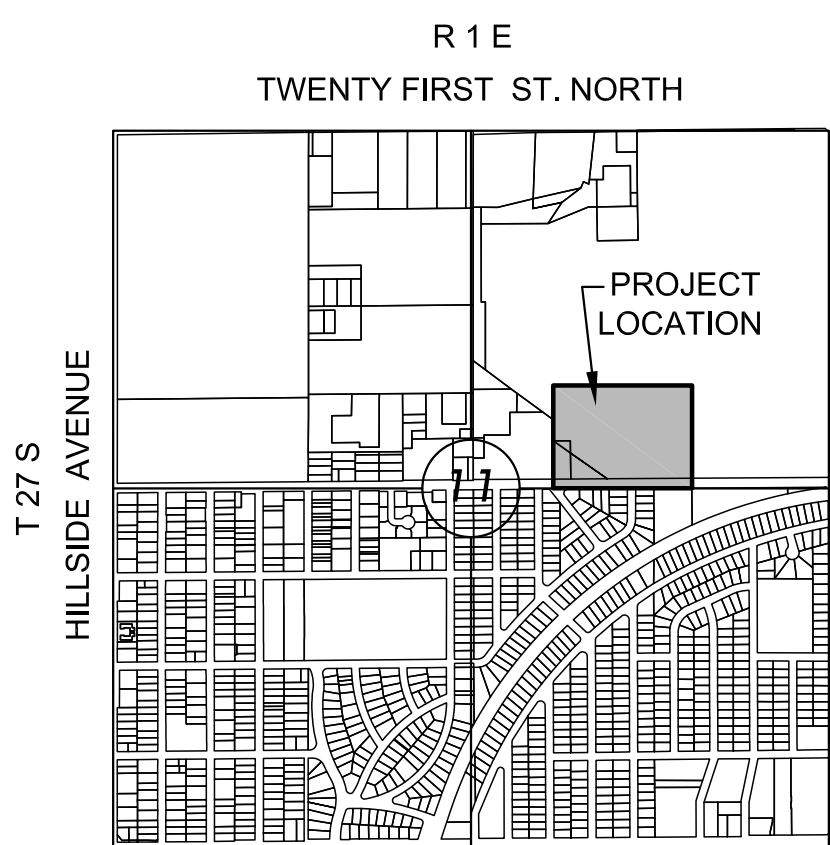
THE CITY OF WICHITA, KANSAS
GARY JANZEN, P.E. - CITY ENGINEER

OCA 607853

AS-BUILT PLANS - MAY 2016

INSPECTED BY: LARRY SCHALLER, MKEC ENGINEERING, INC
CONSTRUCTED BY: MILES CONSTRUCTION
CONSTRUCTION DATE: NOVEMBER 2015 TO FEBRUARY 2016
SUPPLIER: WICHITA WINWATER COMPANY

| | | | | | |
|------------------|---|----------------------------|---|-----------|--------|
| 8"x8" TEE: | 1 | 4" VALVE (CLOW): | 1 | 8" PVC: | 674 LF |
| 8"x2" TEE: | 1 | 8" VALVE (CLOW): | 2 | 12" PVC: | 473 LF |
| 8"x4" TEE: | 1 | 12" VALVE (M&H VALVE CO.): | 1 | 12" DICL: | 6 LF |
| 12" 22.5° BEND: | 2 | | | | |
| 12" 11.25° BEND: | 2 | FIRE HYDRANT (CLOW): | 1 | | |
| 8" COUPLING: | 2 | | | | |



VICINITY MAP

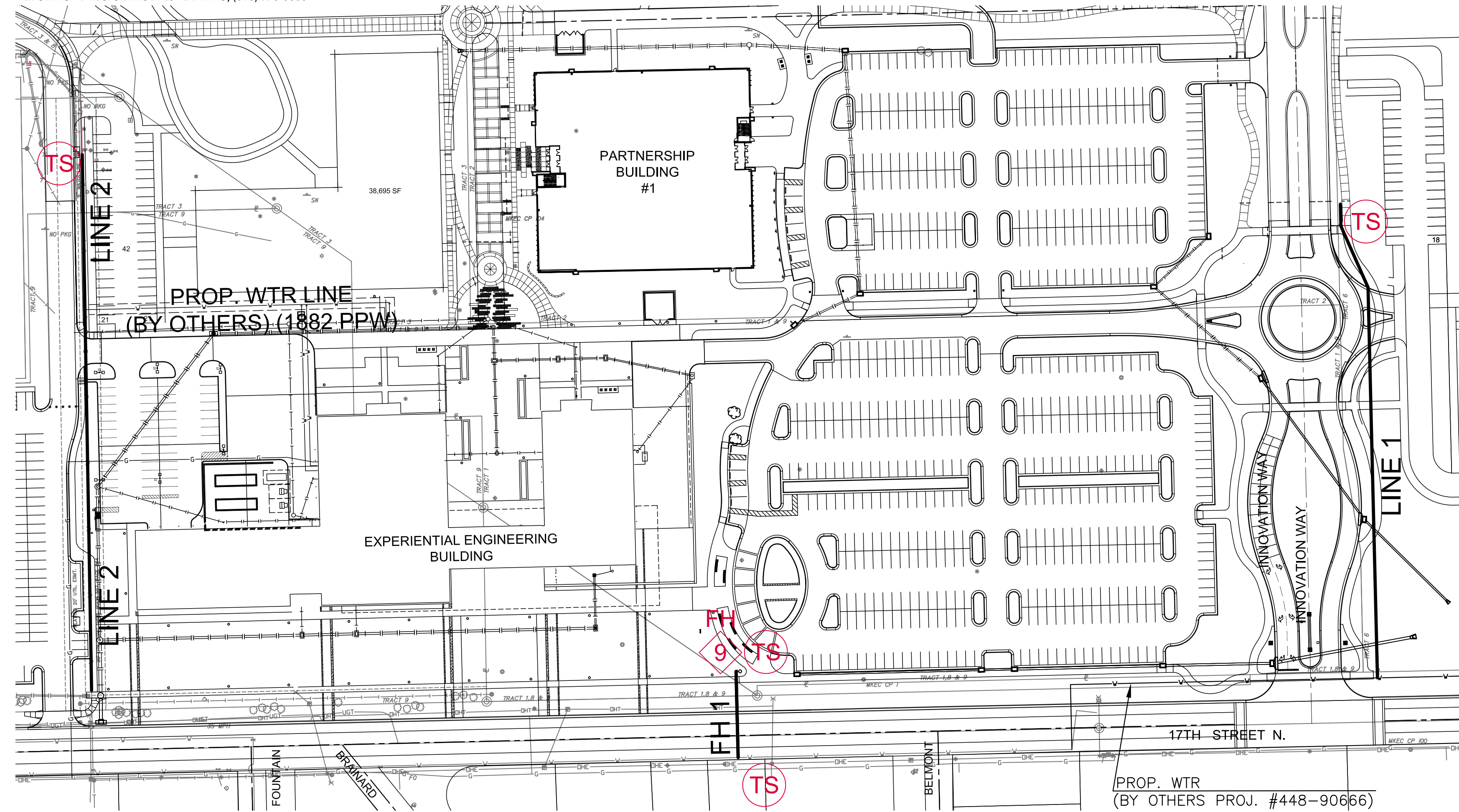
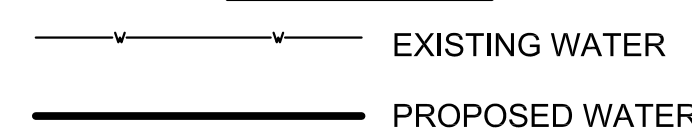
No Scale

INDEX TO DRAWINGS

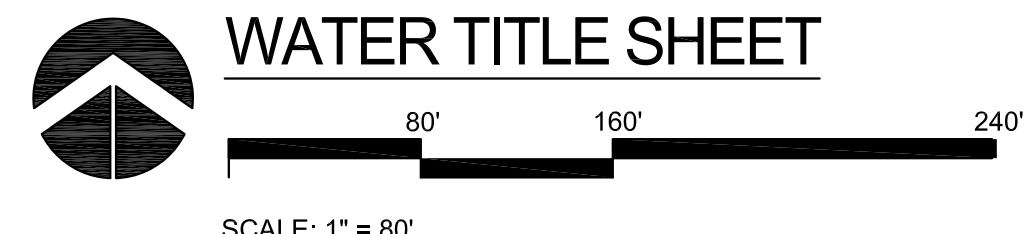
| SHEET NO. | DESCRIPTION |
|-----------|----------------------|
| 56 | WATER TITLE |
| 57 | WATER DETAILS |
| 58-59 | WATER PLAN & PROFILE |
| 60 | WATER BUBBLE MAP |

SEE GENERAL NOTE #13 FOR CITY OF WICHITA STANDARD BMP LINK

LEGEND



PROP. WTR (BY OTHERS PROJ. #448-90666)



NOTE: WATER LINE VALVES TO BE OPERATED BY CONTRACTOR ONLY IF WATER INSPECTOR IS ON SITE.

BENCHMARK & CONTROL POINT INFORMATION ON BUBBLE MAP, SHEET 60.

APPROVED AS NOTED BY WICHITA PUBLIC WORKS ENGINEERING DIVISION & BY WICHITA FIRE DEPARTMENT

Engineering: *Referen Duff* 10/29/2015
Utilities: *Shan Melba* 11/02/2015
Fire Department: *BAVAO* 10/29/15

NOTE TO CONTRACTORS

Public Property:
Inspection and testing for the water line is to be provided by a Licensed Consulting Engineering Firm under contract with the Owner/Developer. Said inspection to be in accordance with the City of Wichita standard construction engineering practices and certified by a Professional Engineer Licensed in the state of Kansas. No work shall be performed in dedicated easements or public rights-of-way by the Contractor without such inspection nor shall any work be commenced without written authorization by the City Engineer. All Construction and Materials shall comply with the City of Wichita Specifications and Standards and Special Provision (on file and available in the City Engineer's office) or on the City's Website.

Private Property:
Installation and testing for the fire protection line is to be performed by a City of Wichita licensed fire protection contractor in accordance with the fire codes as adopted by the City of Wichita. All material and construction practices for the fire protection line shall comply with the fire codes as adopted by the City of Wichita (available from the City of Wichita Fire Department). The contractor shall not commence work without notification and approval of the Wichita Fire Department. Inspection of the fire protection line is to be provided by a licensed Engineering Firm under contract with the Owner/Developer and the Fire Department. The contractor shall not start work until the project inspector is assigned to the project and present on the site. Any work done without inspection will be required to be uncovered for inspection.

An approved copy of these plans signed by City staff is required on-site.

NOTE: ALL LINES TO BE INSTALLED BY OTHERS ARE SUBJECT TO MABCD REVIEW.

NOTE: CONTRACTOR TO VERIFY DEPTH AND LOCATION OF EXISTING UTILITIES PRIOR TO CONSTRUCTION.



| REVISION | DATE |
|----------|------|
| | |

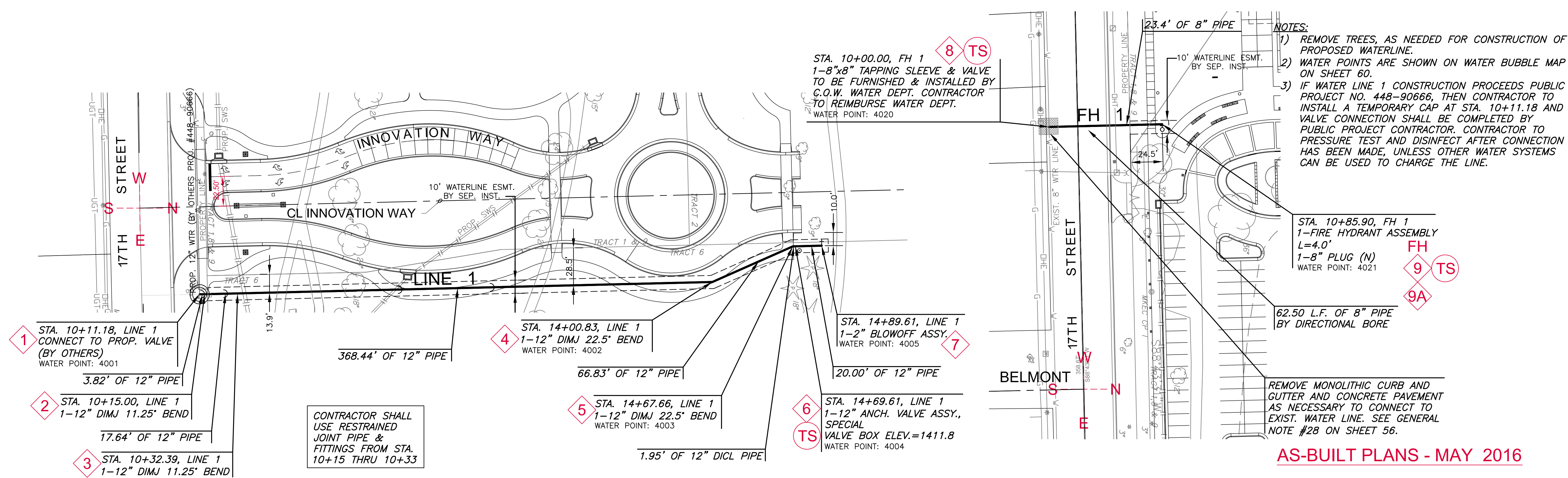
DIVISION OF ADMINISTRATION & FINANCE
FACILITIES PLANNING
1845 FAIRMOUNT ST.
WICHITA, KANSAS 67260-0047
Phone 316-978-3030

Department of Administration & Procurement
Office of Facilities & Procurement Management
Design, Construction & Compliance
800 SW Jackson, Suite 700
Topeka, Kansas 66612-1216
Phone 785-296-9899

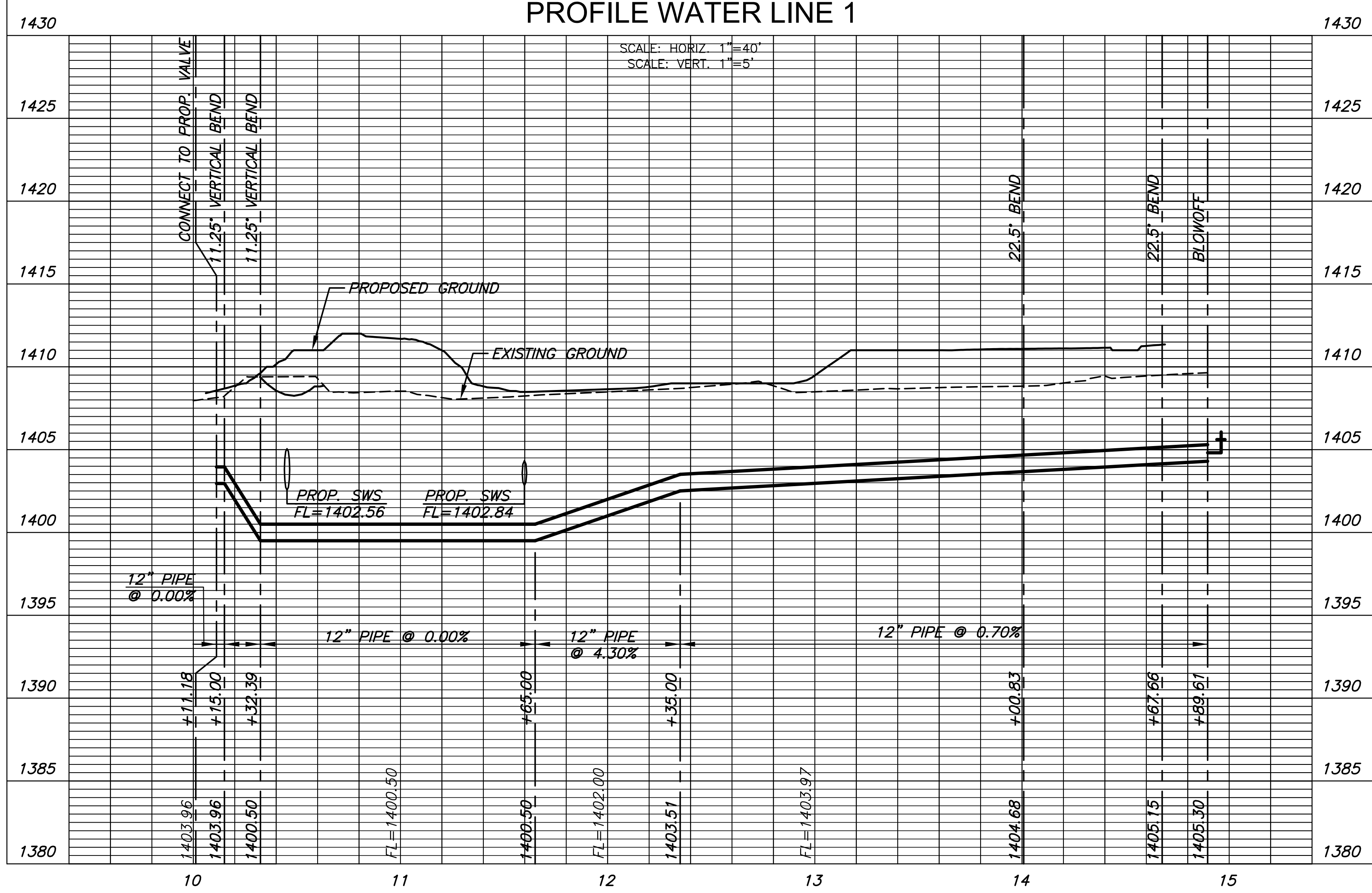
WICHITA STATE UNIVERSITY
17th ST. ENTRY DRIVE/PARKING
1845 FAIRMOUNT ST.
WICHITA, KANSAS 67260-0023
DATE: 06/19/2015 DRAWN BY: LES CHECKED BY: SPE

WATER TITLE SHEET
A-012680Rev
56 OF 81
ORIGINAL CONTRACT DOCUMENTS

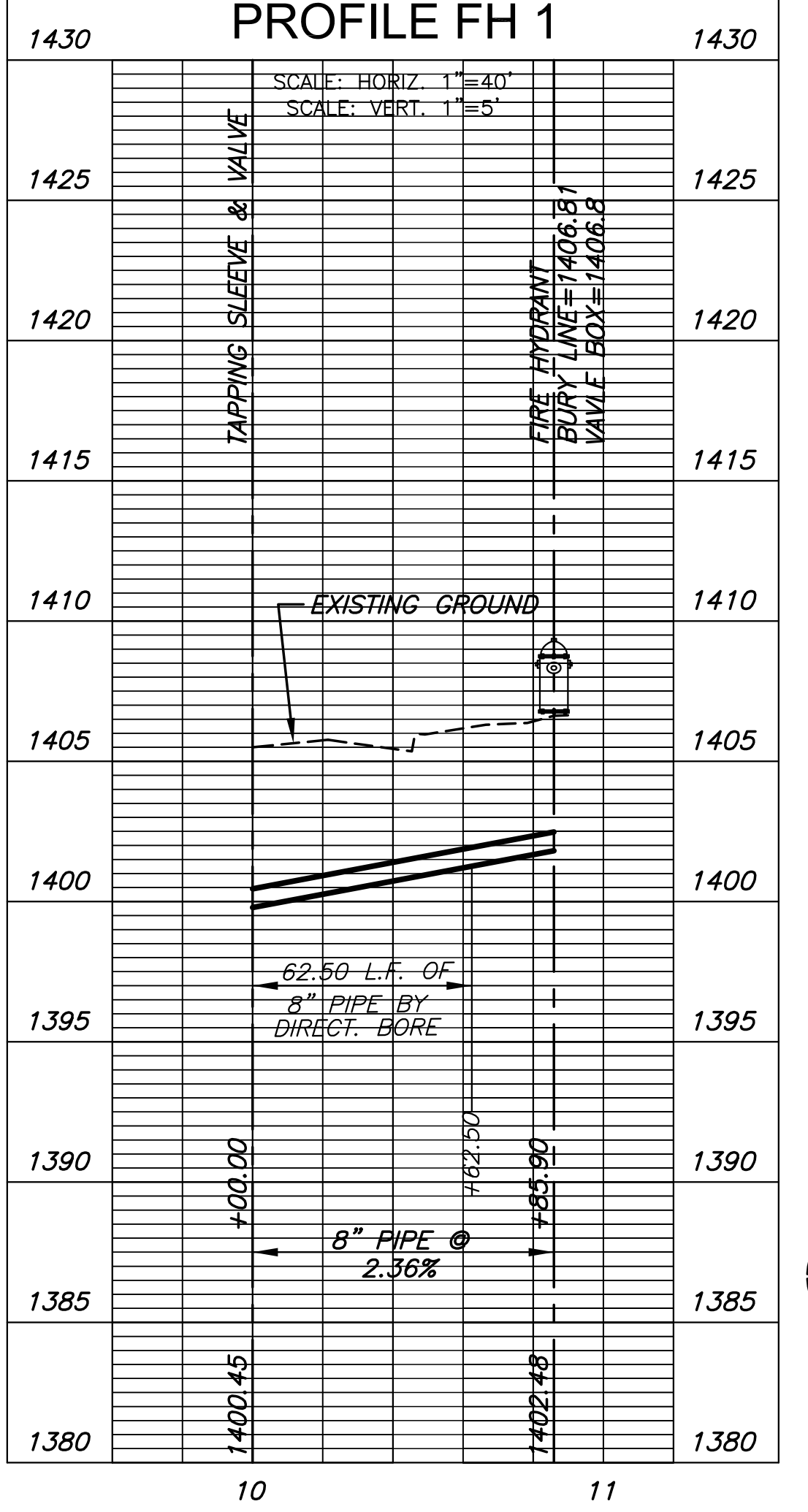
J:\PROJECTS\2015\1910\00074_KS DEPT. ADMIN_VSU_17TH ST DR & PARKING_LOT_15074 CAD\ISIT505 CIVIL\WTR\15074_P12_CTD1.DWG
 PLOTTED: Tuesday, May 03, 2016 10:58AM



PLAN WATER LINE 1
PROFILE WATER LINE 1

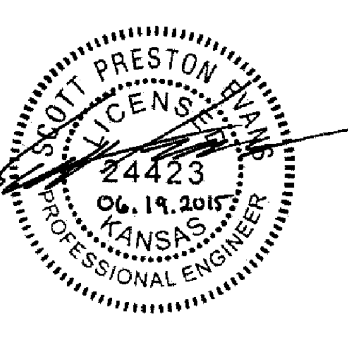
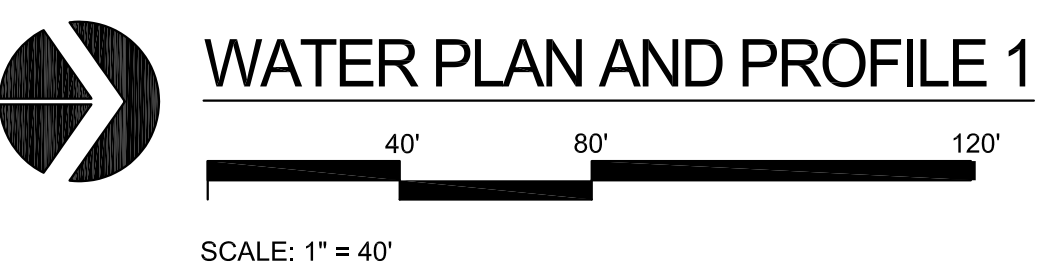


PLAN FH 1
PROFILE FH 1



NOTE:
CONTRACTOR TO VERIFY
LOCATION AND ELEVATION OF
EXIST. WATER LINES PRIOR TO
CONSTRUCTION.

AS-BUILT PLANS - MAY 2016



| NO. | REVISION | DATE |
|-----|----------|------|
| | | |
| | | |
| | | |

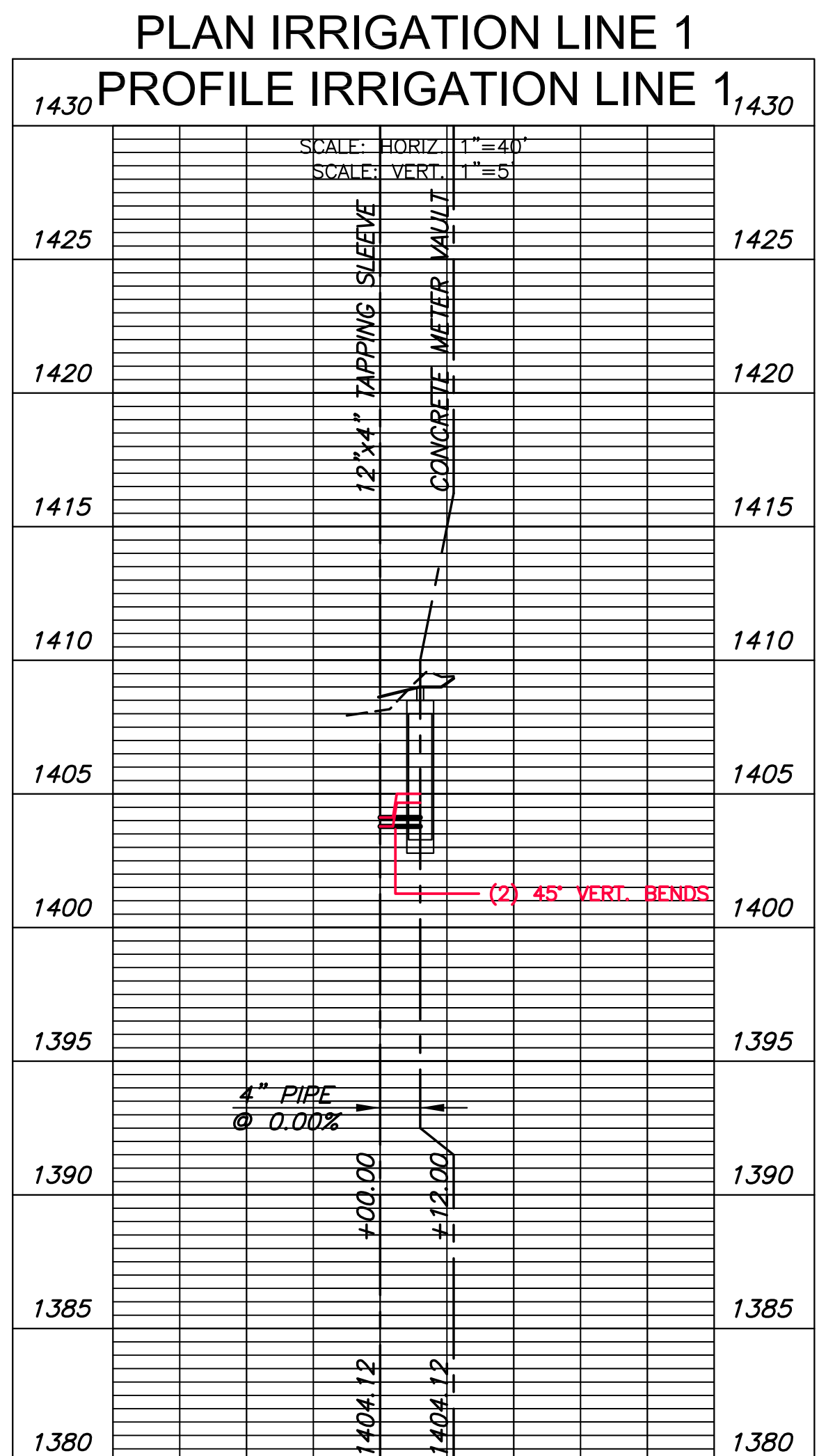
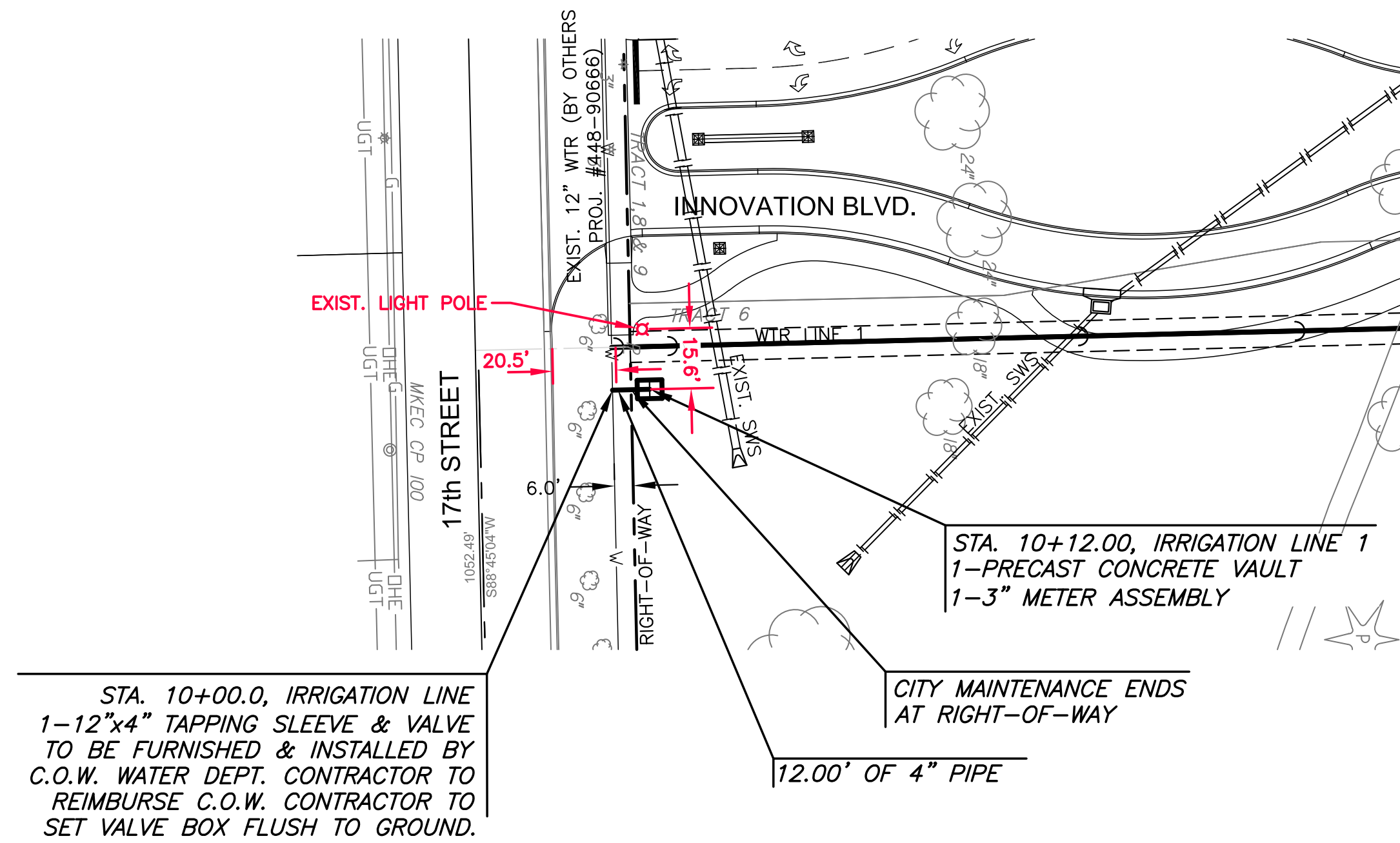
DIVISION OF ADMINISTRATION & FINANCE
FACILITIES PLANNING
1845 FAIRMOUNT ST.
WICHITA, KANSAS 67260-0047
Phone 316-978-3030

Department of Administration & Procurement
Office of Facilities & Procurement Management
Design, Construction & Compliance
800 SW Jackson, Suite 700
Topeka, Kansas 66612-1216
Phone 785-296-8899

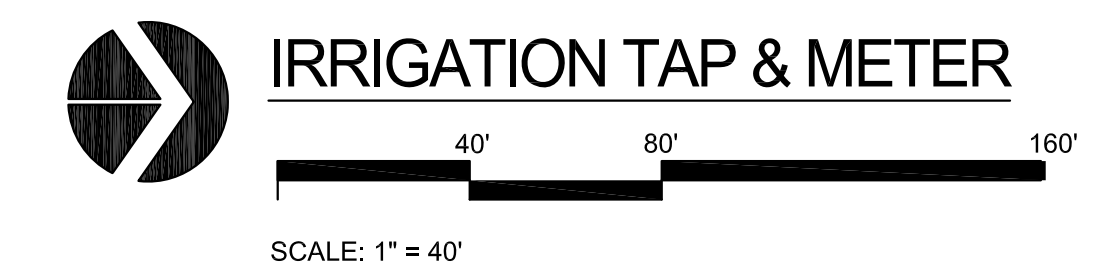
WICHITA STATE UNIVERSITY
17th St. ENTRY DRIVE/PARKING
1845 FAIRMOUNT ST.
WICHITA, KANSAS 67260-0023
DATE: 06/19/2015 DRAWN BY: LES CHECKED BY: SPE

AS-BUILT PLANS - OCTOBER 2016

INSPECTED BY: GENE RATH, MKEC ENGINEERING, INC
 CONSTRUCTED BY: SEEDER'S CONSTRUCTION
 SUPERINTENDENT: RICK BERTHA
 CONSTRUCTION DATE: OCTOBER 2016
 SUPPLIER: HD SUPPLY



NOTE:
 1. CONTRACTOR TO VERIFY LOCATION AND ELEVATION OF EXIST. WATER LINE PRIOR TO CONSTRUCTION.
 2. CONTRACTOR TO FIELD LOCATE EXACT TAP & VAULT LOCATIONS.



| REVISION | DATE |
|----------|------|
| | |
| | |
| | |
| | |
| | |
| | |
| | |
| | |
| | |

DIVISION OF ADMINISTRATION & FINANCE
 FACILITIES PLANNING
 1845 FAIRMOUNT ST.
 WICHITA, KANSAS 67260-0047
 Phone 316-978-3030

Department of Administration
 Office of Facilities & Procurement Management
 Design, Construction & Compliance
 800 SW Jackson, Suite 700
 Topeka, Kansas 66612-1216
 Phone 785-296-8899

WICHITA STATE UNIVERSITY
 17th ST. ENTRY DRIVE/PARKING
 1845 FAIRMOUNT ST.
 WICHITA, KANSAS 67260-0023
 DATE: 06/19/2015 DRAWN BY: LES CHECKED BY: SPE

IRRIGATION TAP & METER
 A-012680Rev
 58A OF 81
 ORIGINAL CONTRACT DOCUMENTS

PLOTTED: Tuesday, May 03, 2016 10:52AM

8" COUPLER (AC TO PVC) AB
 STA. 10+00, LINE 2
 CUT EXIST. 8" WATER AND
 CONNECT NEW 8" PIPE
 WATER POINT: 4030

10

STA. 15+29.50, LINE 2
 1-8"x2" DIMJ TEE
 1-2" BLOWOFF ASSY.
 VALVE BOX ELEV.=1400.05
 WATER POINT: 4031

11
 12 TS

STA. 15+34.50, LINE 2
 CUT EXIST. 8" WATER AND
 CONNECT PROP. 8" PIPE
 1-8" MEGALUG COUPLING

13

NEW 8" GATE VALVE
 INSTALLED AB

18

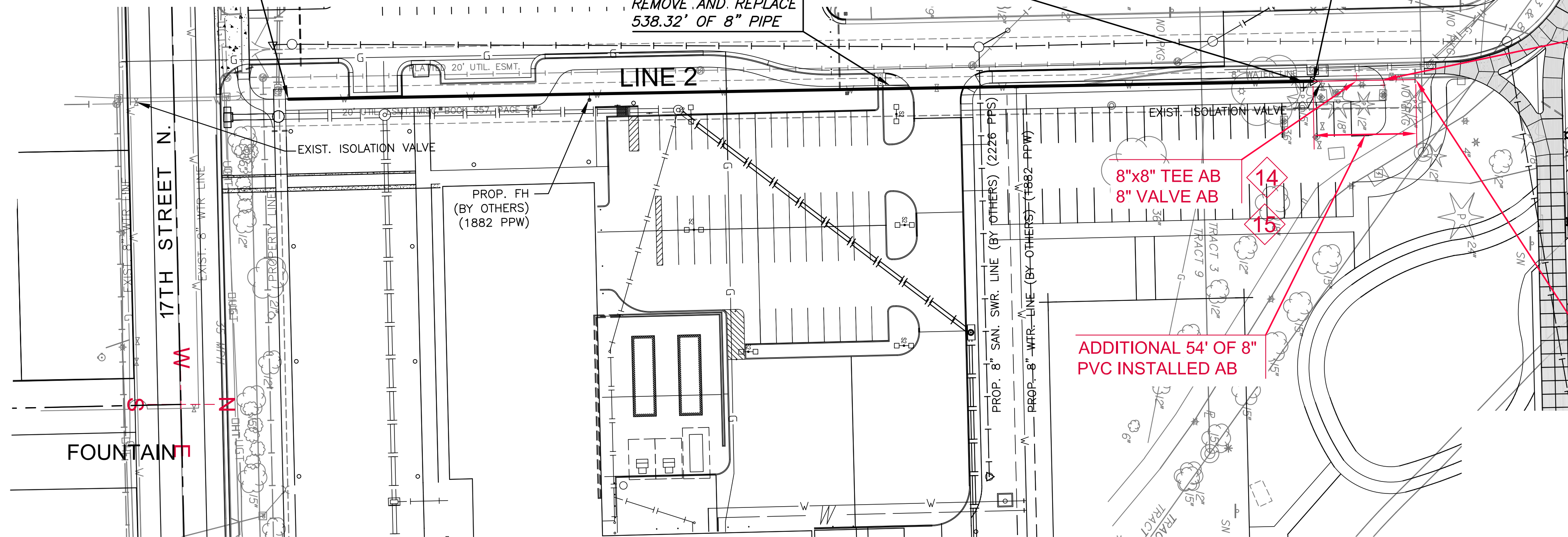
8"x4" TEE AB
 4" VALVE AB
 4"x2" REDUCER AB
 2" SERVICE CONNECTION AB
 RECONNECTED UPSTREAM
 OF EXISTING METER

16

17

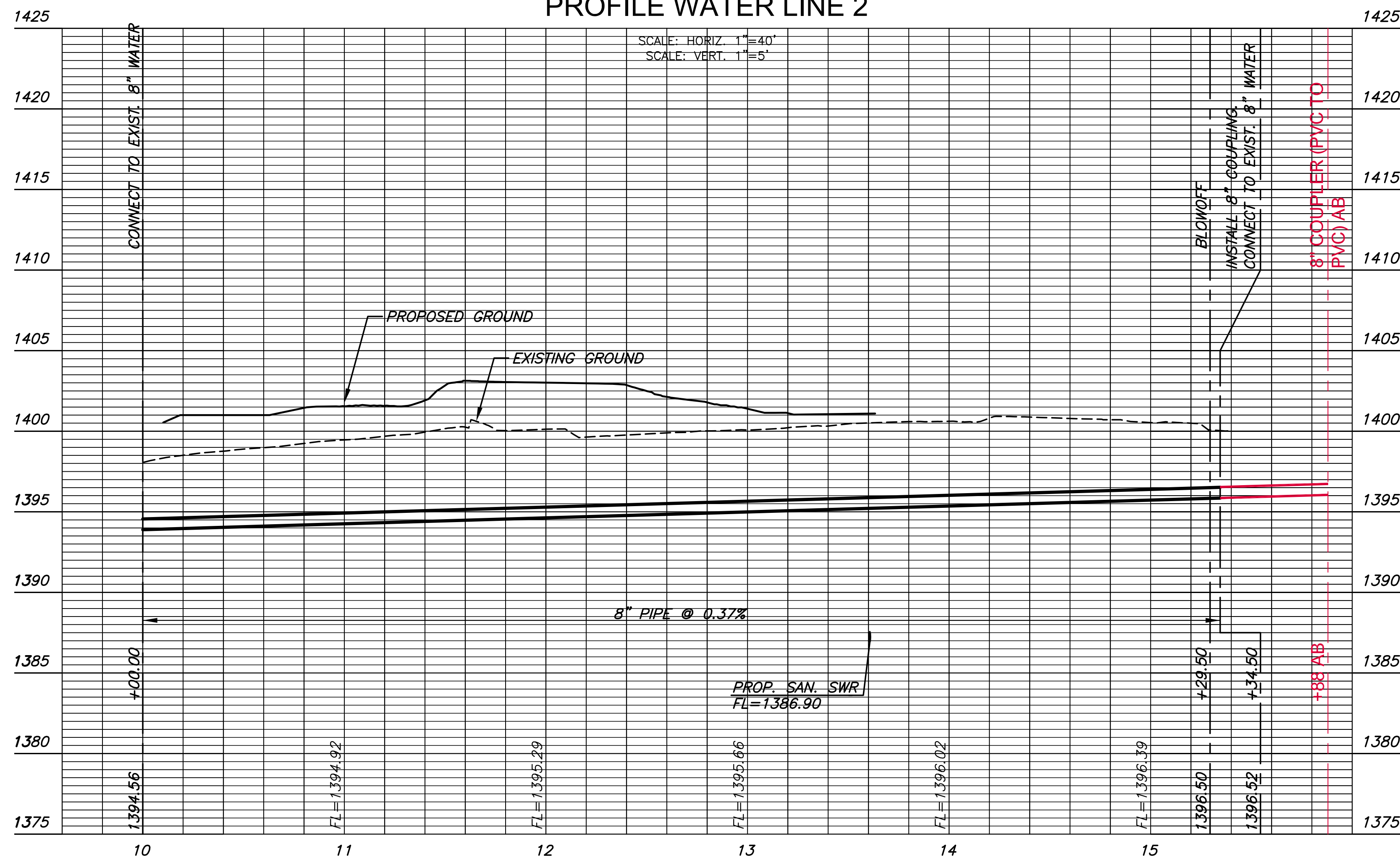
NOTE:
 CONTRACTOR TO VERIFY
 LOCATION AND ELEVATION OF
 EXIST. WATER LINES PRIOR TO
 CONSTRUCTION.

- NOTES:
- 1) REMOVE TREES AND SIDEWALK, AS NEEDED FOR CONSTRUCTION OF PROPOSED WATERLINE.
 - 2) WATER POINTS ARE SHOWN ON WATER BUBBLE MAP ON SHEET 60.
 - 3) LINE 2 SHALL ONLY BE CONSTRUCTED IF ITS DETERMINED BY WSU OFFICIALS, MKEC INSPECTOR AND CITY OF WICHITA OFFICIAL THAT THE EXISTING LINE IS NOT SUITABLE FOR USE. CONTRACTOR SHALL BE RESPONSIBLE FOR DIGGING INSPECTION HOLES OVER THE LINE. COST SUBSIDIARY TO PROJECT.
 - 4) ALL FITTINGS, VALVES AND WATER APPURTENANCES SPECIFIED ON THIS SHEET ARE SUBSIDIARY TO "PIPE, WL 8"
 - 5) ALL VALVES REMOVED FROM LINE 2 SHALL BE RETURNED TO CITY OF WICHITA WATER DEPT. AT 1845 S. MCLEAN.



AS-BUILT PLANS - MAY 2016

PLAN WATER LINE 2
 PROFILE WATER LINE 2



| NO. | DESCRIPTION | APPROXIMATE LOCATION |
|-----|------------------------------------|---|
| 1 | CONNECT TO PROP. VALVE (BY OTHERS) | 66.5' E. & 44.7' N. OF INTERSECTION OF INNOVATION WAY & 17TH. ST. N. |
| 2 | 12" DIMJ 11.25° BEND | 66.5' E. & 48.5' N. OF INTERSECTION OF INNOVATION WAY & 17TH. ST. N. |
| 3 | 12" DIMJ 11.25° BEND | 66.5' E. & 65.9' N. OF INTERSECTION OF INNOVATION WAY & 17TH. ST. N. |
| 4 | 12" DIMJ 22.5° BEND | 66.0' E. & 389.6' N. OF INTERSECTION OF INNOVATION WAY & 17TH. ST. N. |
| 5 | 12" DIMJ 22.5° BEND | 40.3' E. & 451.0' N. OF INTERSECTION OF INNOVATION WAY & 17TH. ST. N. |
| 6 | 12" ANCH. VALVE ASSY., SPECIAL | 40.3' E. & 453.0' N. OF INTERSECTION OF INNOVATION WAY & 17TH. ST. N. |
| 7 | 2" BLOWOFF ASSY. | 40.3' E. & 473.0' N. OF INTERSECTION OF INNOVATION WAY & 17TH. ST. N. |
| 8 | 8"x8" TAPPING SLEEVE & VALVE | 199.7' W. & 24.9' N. OF INTERSECTION OF BELMONT & 17TH. ST. N. |
| 9 | FIRE HYDRANT | 199.8' W. & 64.0' N. OF INTERSECTION OF BELMONT & 17TH. ST. N. |
| 9A | VALVE | 195.8' W. & 64.0' N. OF INTERSECTION OF BELMONT & 17TH. ST. N. |
| 10 | 8" COUPLER (AC TO PVC) AB | 157.8' W. & 59.8' N. OF INTERSECTION OF FOUNTAIN & 17TH. ST. N. |
| 11 | 8"x2" DIMJ TEE | 155.0' W. & 589.5' N. OF INTERSECTION OF FOUNTAIN & 17TH. ST. N. |
| 12 | 2" BLOWOFF ASSY. | 153.0' W. & 589.5' N. OF INTERSECTION OF FOUNTAIN & 17TH. ST. N. |
| 13 | 8" MEGALUG COUPLING | 160.3' W. & 594.4' N. OF INTERSECTION OF FOUNTAIN & 17TH. ST. N. |
| 14 | 8"x8" TEE AB | 154.9' W. & 617.0' N. OF INTERSECTION OF FOUNTAIN & 17TH. ST. N. |
| 15 | 8" VALVE AB | 153.9' W. & 617.0' N. OF INTERSECTION OF FOUNTAIN & 17TH. ST. N. |
| 16 | 8"x4" TEE AB | 154.7' W. & 631.0' N. OF INTERSECTION OF FOUNTAIN & 17TH. ST. N. |
| 17 | 4" VALVE AB | 152.7' W. & 631.0' N. OF INTERSECTION OF FOUNTAIN & 17TH. ST. N. |
| 18 | 8" GATE VALVE AB | 204.8' W. & 686.0' N. OF INTERSECTION OF FOUNTAIN & 17TH. ST. N. |



Wichita, KS • 316-684-9600



| REVISION | DATE |
|----------|------|
| | |
| | |
| | |
| | |

DIVISION OF ADMINISTRATION & FINANCE
 FACILITIES PLANNING
 1845 FAIRMOUNT ST.
 WICHITA, KANSAS 67260-0047
 Phone 316-978-3030

Department of Administration
 Office of Facilities & Procurement
 Management
 Design, Construction & Compliance
 800 SW Jackson, Suite 700
 Topeka, Kansas 66612-1216
 Phone 785-296-8899

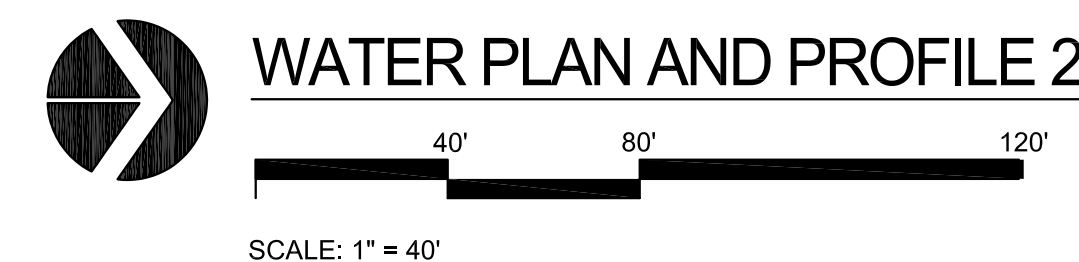
WICHITA STATE UNIVERSITY
 17th ST. ENTRY DRIVE/PARKING
 1845 FAIRMOUNT ST.
 WICHITA, KANSAS 67260-0023
 DATE: 06/19/2015 DRAWN BY: LES CHECKED BY: SPE

WATER PLAN AND PROFILE 2

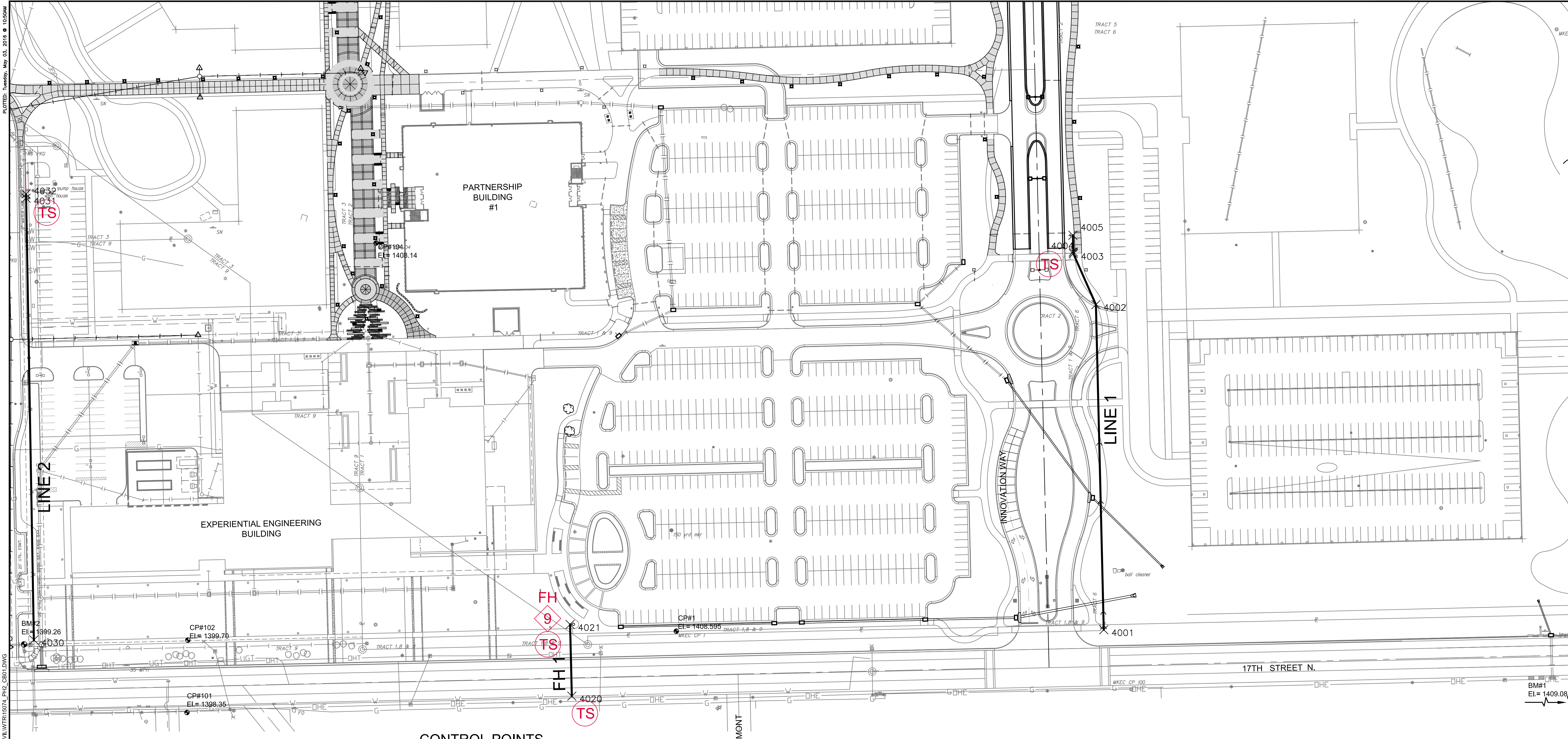
A-012680Rev

59 OF 81

ORIGINAL CONTRACT DOCUMENTS



J:\PROJECTS\2015\150100074_KS DEPT. ADMIN. WSU_17TH ST DR & PARKING LOT_15074 CAD\SHOTS\05 CIVIL\WTR\15074_P12_CPI2.DWG



PLOTTED: Tuesday, May 03, 2016 @ 10:50AM
 J:\PROJECTS\2015\15010010074_KS DEPT. ADMIN. VSU_17TH ST. DR. & PARKING LOT_15074 CAD\SHOTS\05 CIVIL\WTR\15074_P12_CB01.DWG

BENCHMARKS

BM #1
 USGS Benchmark Disc. Stamped P 39 1934. 36' south and 32' west of centerline of Oliver and 17th Street North.
 Elev. = 1409.08 NAVD 88

BM #2
 Chiseled square on top of curb on east side of entrance to old dorms between Bluff and Fountain, 22' north of north curb of 17th Street North.
 Elev. = 1399.26 NAVD 88

DATUM

1 - The Project Horizontal Datum is based on the NAD83, Kansas State Plane Coordinate System, South Zone, (US Survey Feet Definition), with a Combined Adjustment Factor (CAF) of 1.0001200144. All coordinates and dimensions shown on these plans are modified to Ground values.

The following equations can be used for conversion:
 Ground Coordinates to State Plane Coordinates = Ground x 1/CAF
 State Plane Coordinates to Ground Coordinates = State Plane x CAF

2 - The Vertical Datum used is NAVD88.

CONTROL POINTS

CP #1
 1. 5/8" rebar with red "MKEC Design Point" cap
 2. N = 1696816.905 E = 1663664.242 Elev. = 1408.595 NAVD 88
 3. 60.5' ENE of northeast corner of concrete approach for drive into golf course maintenance building
 4. 28.7' north of north curb of 17th Street North
 5. 25' south of south edge gravel road

CP #101
 1. 5/8" rebar with red "MKEC Control Point" cap
 2. N = 1696719.417 E = 1663077.780 Elev. = 1398.35 NAVD 88
 3. 6.4' south of the south curb of 17th Street North.
 4. 13.2' ENE of a stop sign.
 5. 14' east of the east curb of Fountain.

CP #102
 1. Chiseled "X" on NW corner curb inlet
 2. N = 1696806.215 E = 1663078.841 Elev. = 1399.70 NAVD 88

CP #103
 1. 5/8" rebar with red "MKEC Design Point" cap
 2. N = 1697029.699 E = 1662810.939 Elev. = 1399.48 NAVD 88
 3. 76' south of north end of parking lot immediately south of WSU Physical Plant
 4. 45' east of a light pole

CP #104
 1. 5/8" rebar with red "MKEC Design Point" cap
 2. N = 1697281.82 E = 1663304.51 Elev. = 1408.14 NAVD 88
 3. 75' north and 160' east of northeast corner of old Wheatshocker Dorm
 4. 83' east of east edge of path to maintenance building
 5. 8.5' north of north edge golf cart path

CONTROL POINTS (contin.)

CP #111
 1. 5/8" rebar with red "MKEC Design Point" cap
 2. N = 1697524.672 E = 1662765.039 Elev. = 1402.03 NAVD 88
 3. 15' east of east curb Perimeter Road
 4. 16' north of north curb of Wheatshocker Drive
 5. 22' WNW of Wheatshocker sign

CP #117
 1. 5/8" rebar with red "MKEC Control Point" cap
 2. N = 1696768.72 E = 1662522.36 Elev. = 1393.055 NAVD 88
 3. South side of sidewalk on north side of 17th Street North.
 4. West side of concrete drive of entrance into WSU Maintenance shop.

| WATER POINTS | | | |
|--------------|------------|------------|----------|
| Point # | Northing | Easting | Desc. |
| 4001 | 1696818.57 | 1664176.61 | TEE |
| 4002 | 1697208.10 | 1664167.24 | BEND |
| 4003 | 1697269.22 | 1664140.18 | BEND |
| 4004 | 1697271.17 | 1664140.13 | VALVE |
| 4005 | 1697291.16 | 1664139.65 | BO |
| 4020 | 1696739.08 | 1663539.07 | TEE |
| 4021 | 1696824.96 | 1663537.00 | FH |
| 4030 | 1696806.43 | 1662894.29 | CONNECT |
| 4031 | 1697335.60 | 1662885.04 | BO |
| 4032 | 1697340.59 | 1662884.95 | COUPLING |

AS-BUILT PLANS - MAY 2016

WATER BUBBLE MAP

SCALE: 1" = 60'

EVERY ATTEMPT HAS BEEN MADE TO INSURE ALL COORDINATE VALUES SHOWN ARE AN ACCURATE AND TRUE REPRESENTATION OF THE CURRENT PLANS. ALL VALUES ARE TO BE CONFIRMED WITH THE FINAL SIGNED PLAN SET BEFORE USE.

MKEC
 Wichita, KS • 316-684-9600

| NO. | REVISION | DATE |
|-----|----------|------|
| | | |

Department of Administration & Finance
 Office of Administration & Procurement Management, Design, Construction & Compliance
 800 SW Jackson, Suite 700
 Topeka, Kansas 66612-1216
 Phone 785-296-8899

Division of Administration & Finance
 FACILITIES PLANNING
 1845 FAIRMOUNT ST.
 WICHITA, KANSAS 67260-0047
 Phone 316-978-3030

WICHITA STATE UNIVERSITY
 17th ST. ENTRY DRIVE/PARKING
 1845 FAIRMOUNT ST.
 WICHITA, KANSAS 67260-0023

DATE: 06/19/2015 DRAWN BY: LES CHECKED BY: SPE

WATER BUBBLE MAP

A-012680Rev

60 OF 81

ORIGINAL CONTRACT DOCUMENTS