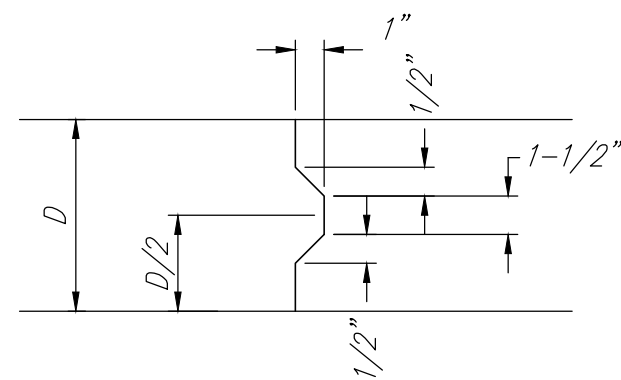
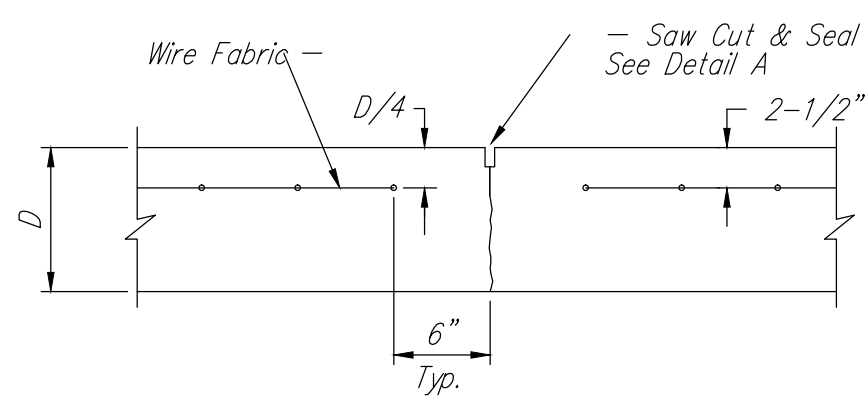


**EXPANSION JOINT (E.J.)**

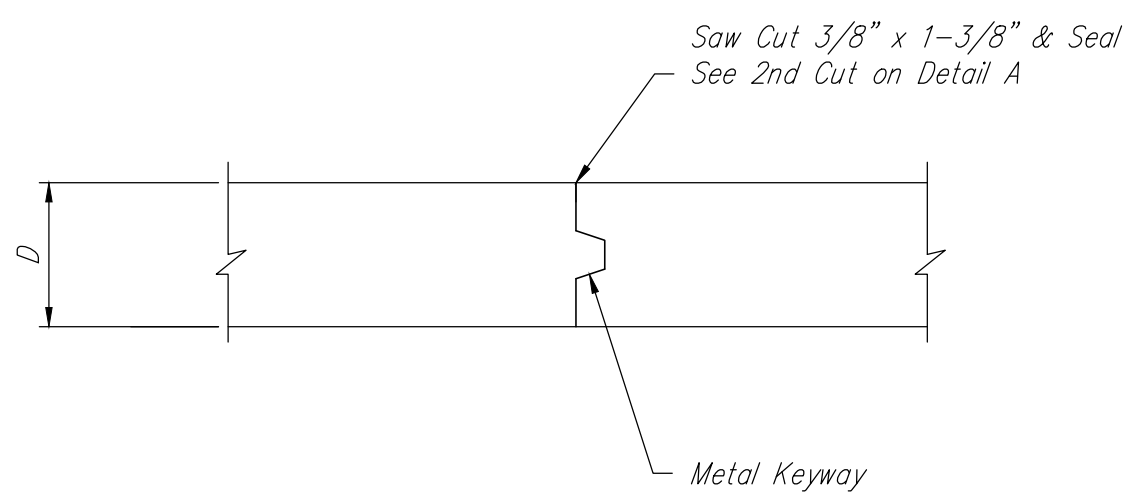
NOTE: Extra Thickness to be Subsidiary to Price of Square Yards Pavement



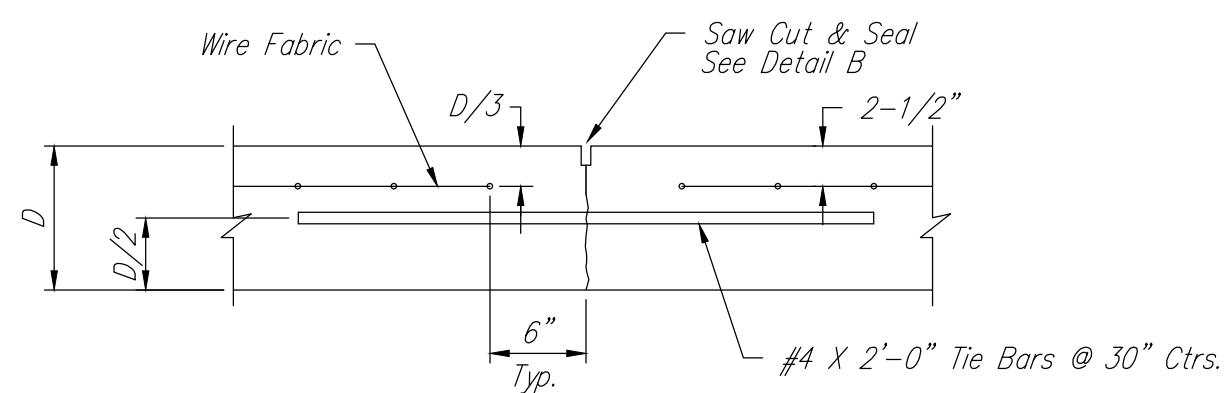
**KEYWAY DETAIL**



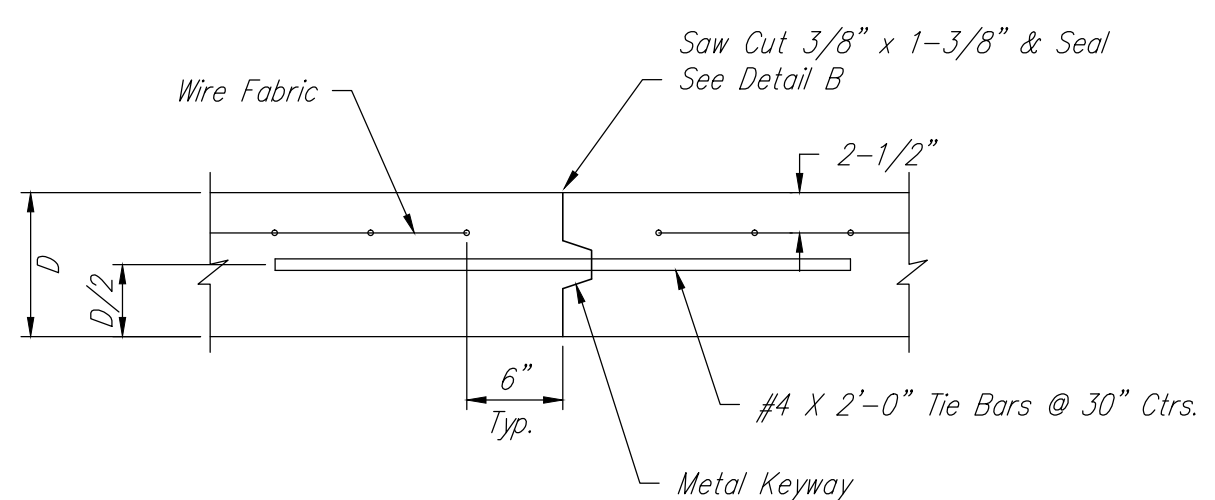
**CONTRACTION JOINT DETAIL (C.J.)**



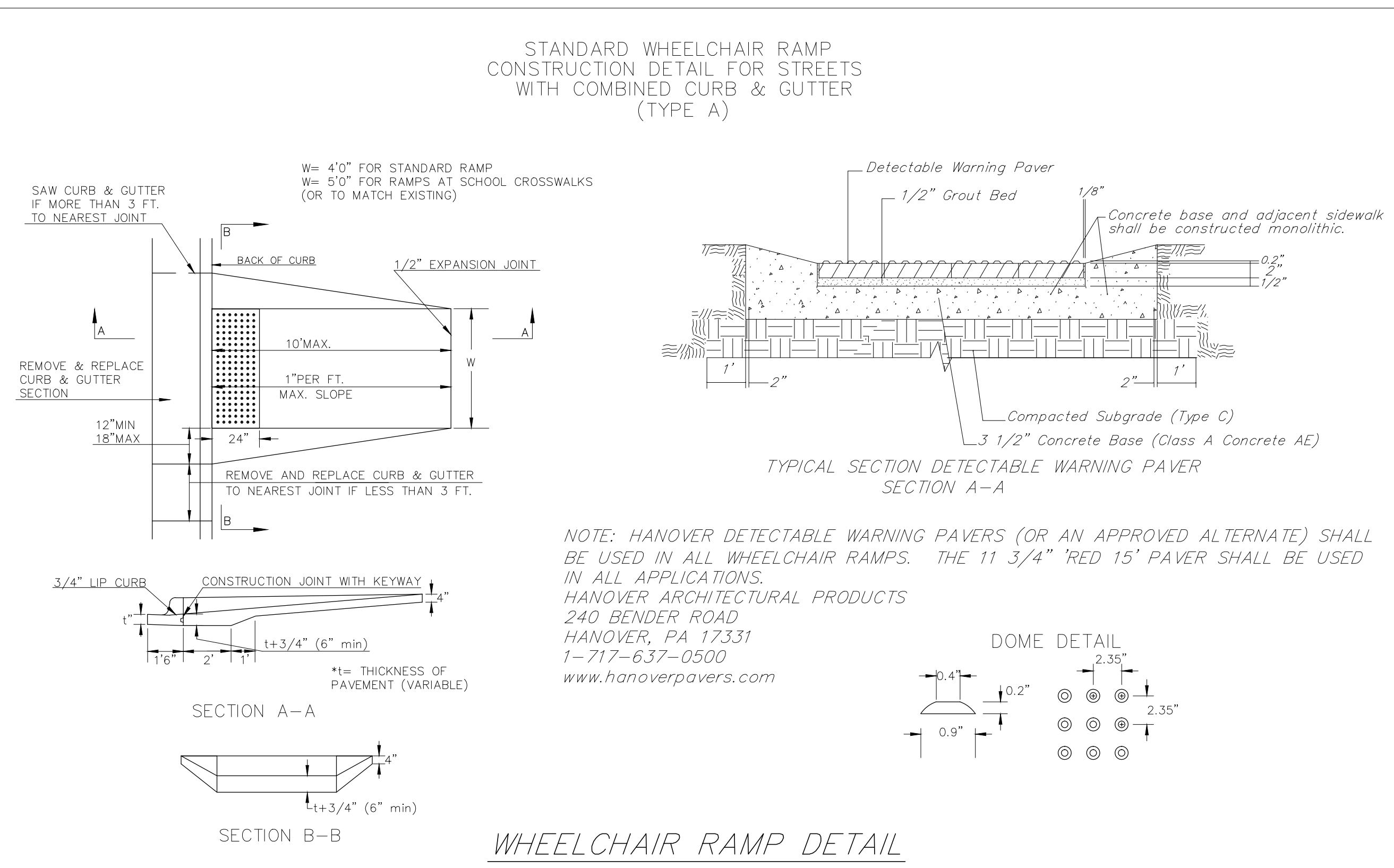
**LONGITUDINAL JOINT DETAIL (L.J.) "A"**



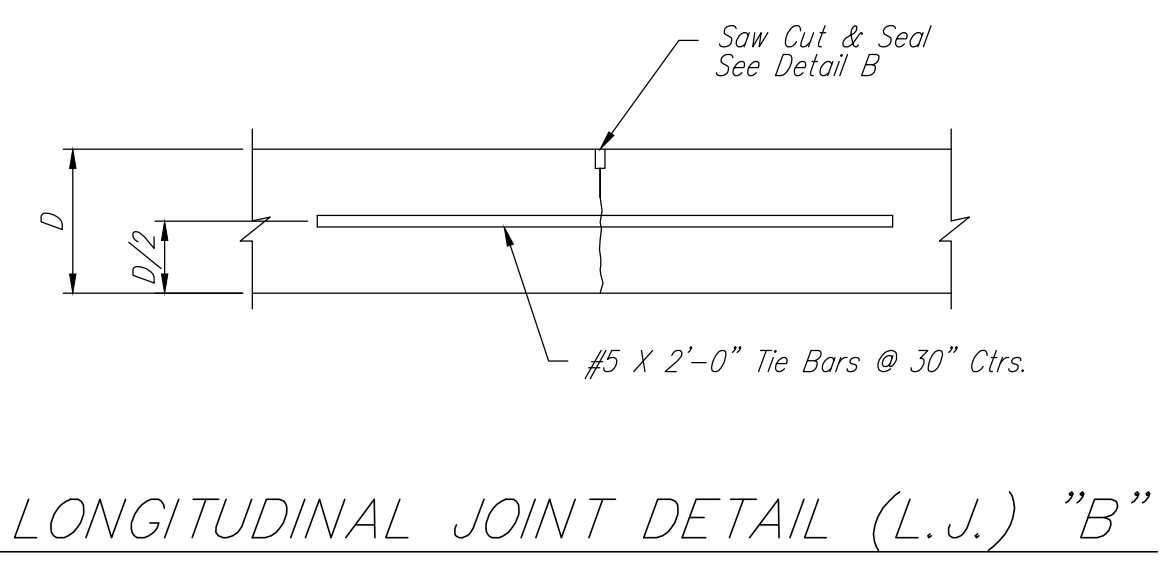
**LONGITUDINAL JOINT DETAIL (L.J.)**



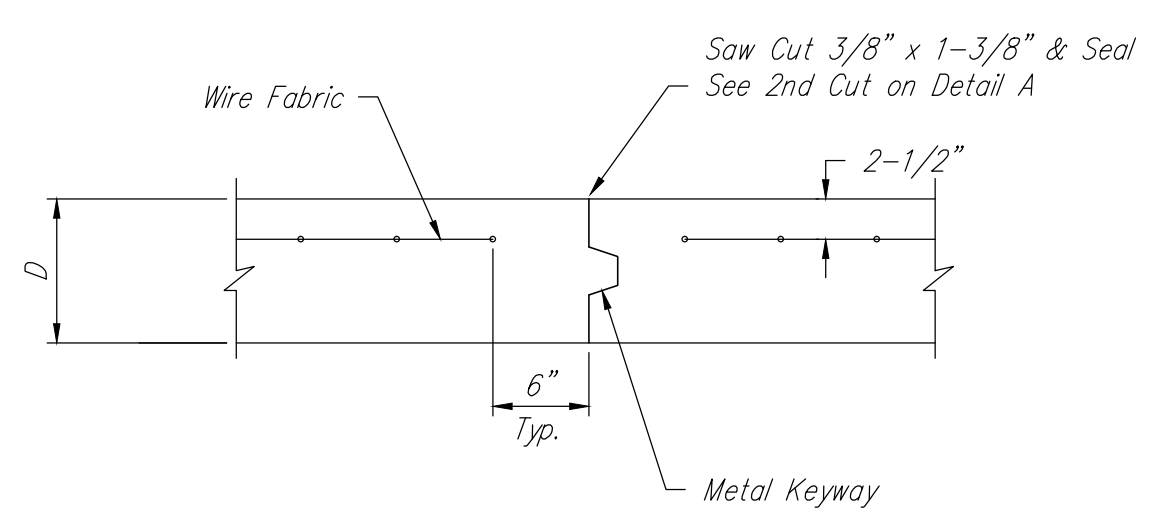
**OPTIONAL LONGITUDINAL JOINT DETAIL (L.J.) (CONSTRUCTION JOINT)**



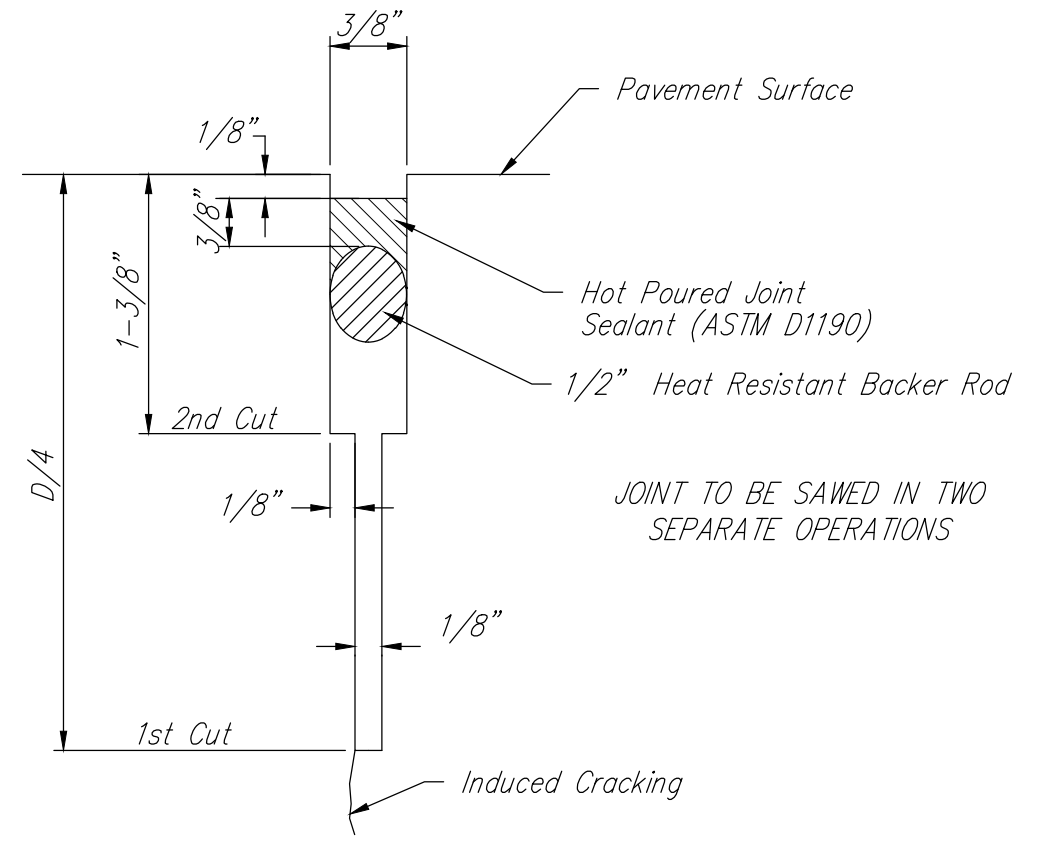
**WHEELCHAIR RAMP DETAIL**



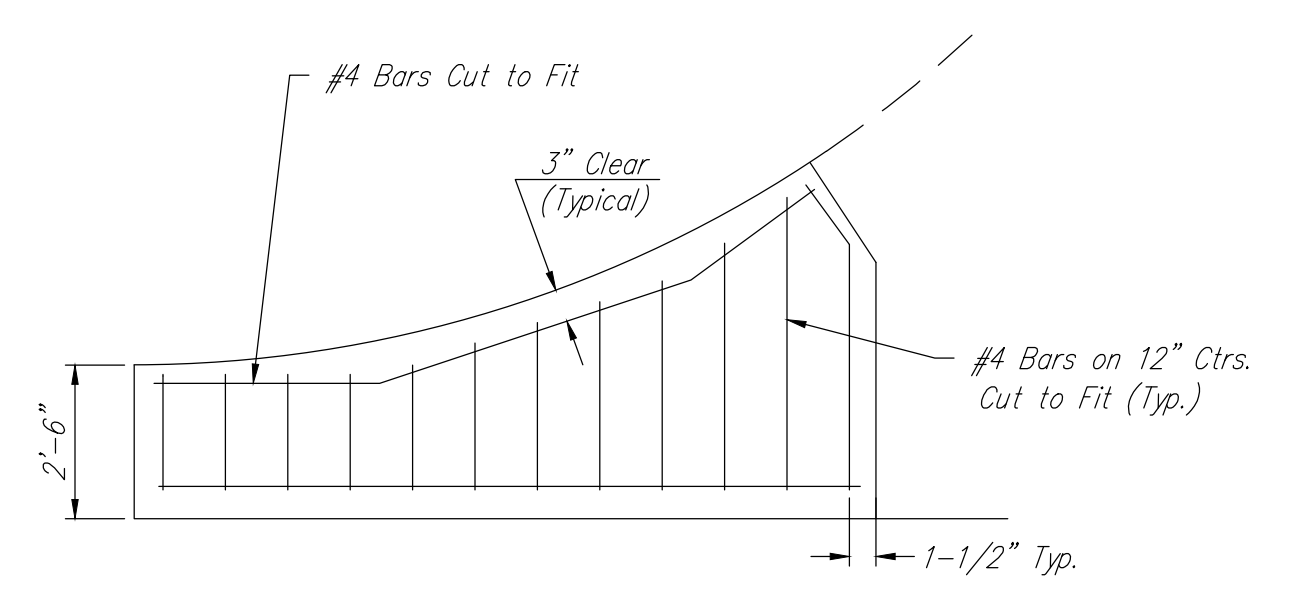
**LONGITUDINAL JOINT DETAIL (L.J.) "B"**



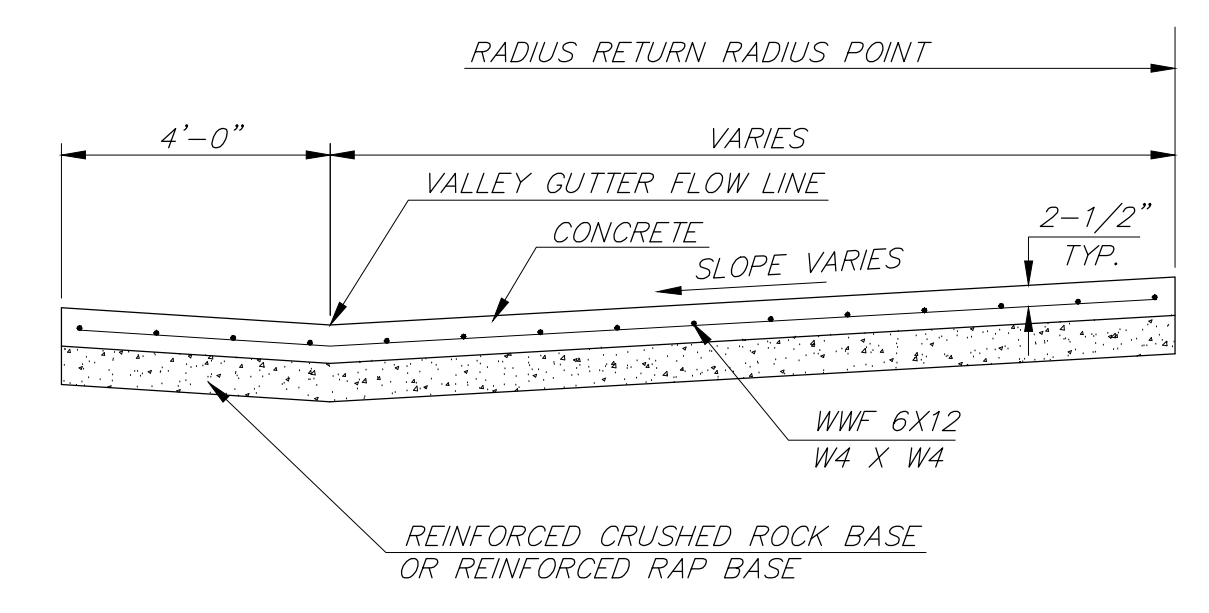
**OPTIONAL CONTRACTION JOINT (CONSTRUCTION JOINT)**



**SAW JOINT DETAIL**



**WING REINFORCING DETAIL**



**SECTION A-A**

<b>Baughman</b>		AUBURN HILLS 16th PHASE 1A VALLEY GUTTER DETAILS WHEELCHAIR RAMP DETAILS	
Baughman Company, P.A. 315 Ellis St. Wichita, KS 67211 P 316-262-7271 F 316-262-0149 ENGINEERING   SURVEYING   PLANNING   LANDSCAPE ARCHITECTURE			
PROJECT NUMBER 472-84192	DESIGN AEG	DRAWN JAK	
REVISIONS:	APPROVED	DATE 08/08/16	
	SCALE 1" = 20'	SHEET	<b>5 OF 23</b>