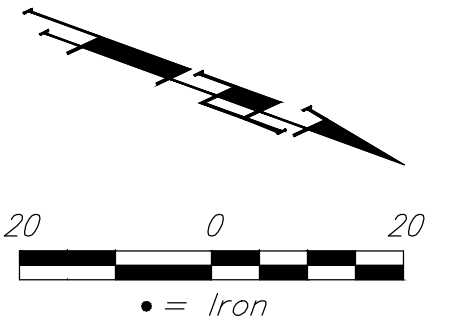


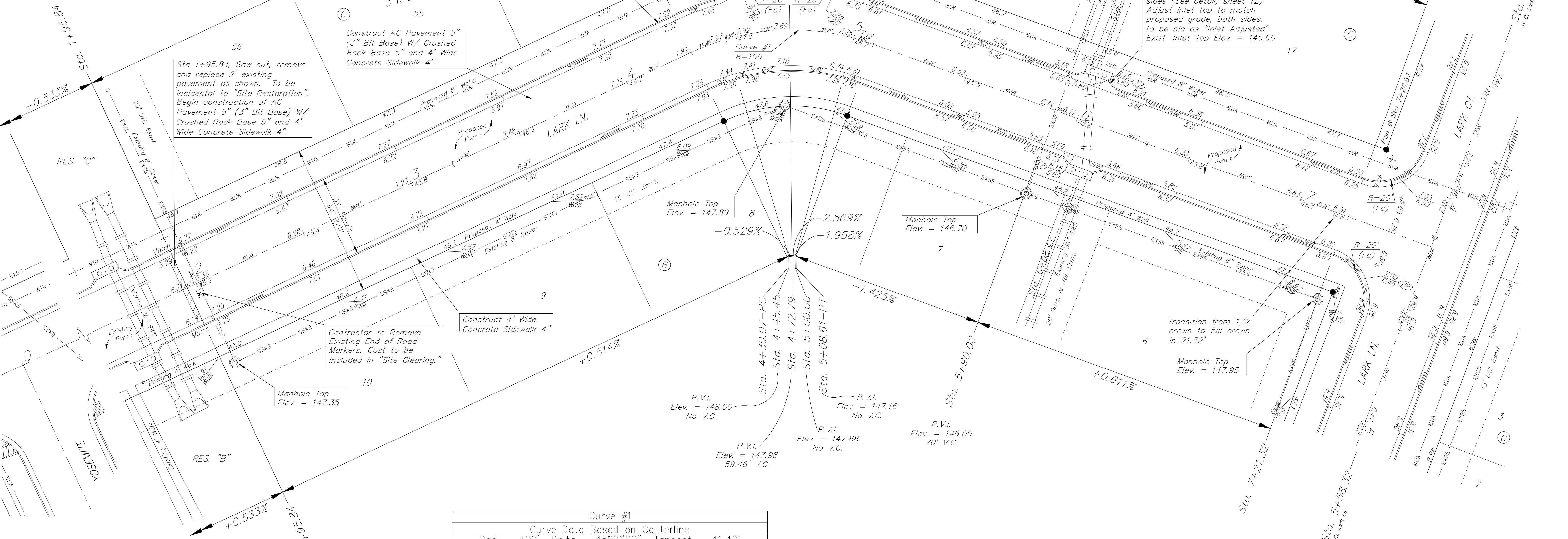
BENCHMARKS:
 BM #1: "+" cut on sidewalk adjacent to manhole, east side of Lark Lane, north of Lot 1, Block B, Southern Ridge 3rd Addition. Elev. = 144.56 (City Datum)

BM #2: "+" cut on sidewalk adjacent to south line of curb inlet on east side of Lark Lane, near Lot 11, Block B, Southern Ridge 3rd Addition. Elev. = 146.93 (City Datum)

Baseline = CL Lark Ln.



P.V.I.
 Elev. = 146.55
 No V.C.



Sta 1+95.84, Saw cut, remove and replace 2' existing pavement as shown. To be incidental to "Site Restoration". Begin construction of AC Pavement 5" (3" Bit Base) W/ Crushed Rock Base 5" and 4' Wide Concrete Sidewalk 4".

Construct AC Pavement 5" (3" Bit Base) W/ Crushed Rock Base 5" and 4' Wide Concrete Sidewalk 4".

Construct Concrete C & G, Comb. Type 2 (3-5/8" RL & 1-1/2")

Valve Box Elev. = 148.20
 Valve Box Elev. = 147.60 18
 Sta 5+00.14, 17.25' Lt. Install subdivision benchmark (Flat survey marker No. 8134-08 3" top diameter) in top of curb. Cost shall be incidental to L.F. Concrete C & G, Comb. Type 2 (3-5/8" RL & 1-1/2")

Construct Inlet Hookups & Curb Inlet Protection, both sides (See detail, sheet 12) Adjust inlet top to match proposed grade, both sides. To be bid as "Inlet Adjusted". Exist. Inlet Top Elev. = 145.60

Contractor to Remove Existing End of Road Markers. Cost to be Included in "Site Clearing."

Transition from 1/2 crown to full crown in 21.32'
 Manhole Top Elev. = 147.95

Subdivision Bench Marks

Street & Station	Location Description	Elevation
Lark Lane 5+00.14, 17.25' Lt.	Adjacent to Fire Hydrant at N. End of N.W. Curb Return of Lark Lane & Prescott.	

Curve #1				
Curve Data Based on Centerline				
Rad. = 100' Delta = 45°00'00" Tangent = 41.42'				
Arc = 78.54' L.C. = 76.54' Def./Ft. = 17.18869 Min.				
Station	Face Chord Lengths		Defl.	Total Defl.
	Arc	8' Left		
4+30.07	-	-	0°00'00"	0°00'00"
4+45.45	15.38'	19.21'	11.52'	4°24'22"
4+50.00	4.55'	5.69'	3.41'	1°18'12"
4+72.79	22.79'	28.43'	17.06'	6°31'44"
5+00.14	27.35'	34.08'	20.45'	7°50'07"
5+08.61	8.47'	10.58'	6.35'	2°25'35"

WATER VALVE LOCATION TABLE

VALVE NUMBER	STREET	BASELINE STATION	OFFSET DISTANCE	OFFSET DIRECTION
V1	Lark Lane	4+93.58	26'	Lt.
V2	Lark Lane	5+00.14	26'	Lt.

Paving contractor will be responsible to operate all water valves on the project, in the presence of the inspector, to ensure accessibility to the valves, and that all valves (except blowoffs) are left in the "ON" position when the project is completed.

NOTE: ROLL TYPE CURB & GUTTER (TYPE 2) TO BE CONSTRUCTED ON THE PAVEMENT SHOWN ON THIS SHEET. TOP OF CURB ELEVATIONS ARE GIVEN FOR FULL HEIGHT CURB (TYPE 4).

Baughman

Baughman Company, P.A. 315 Ellis St. Wichita, KS 67211 P 316-262-7271 F 316-262-0149
 ENGINEERING | SURVEYING | PLANNING | LANDSCAPE ARCHITECTURE

PROJECT NUMBER
472-84192

REVISIONS:

SOUTHERN RIDGE 3RD ADD. PH. 5A

LARK LANE

STREET IMPROVEMENTS

DESIGN	DRAWN
DMV	TMS
APPROVED	DATE
	09/16
SCALE	
Noted	
SHEET	
	7 OF 23

E:\Projects\Southern Ridge 3rd\Phase 5A\STR 06-02-E533.dwg