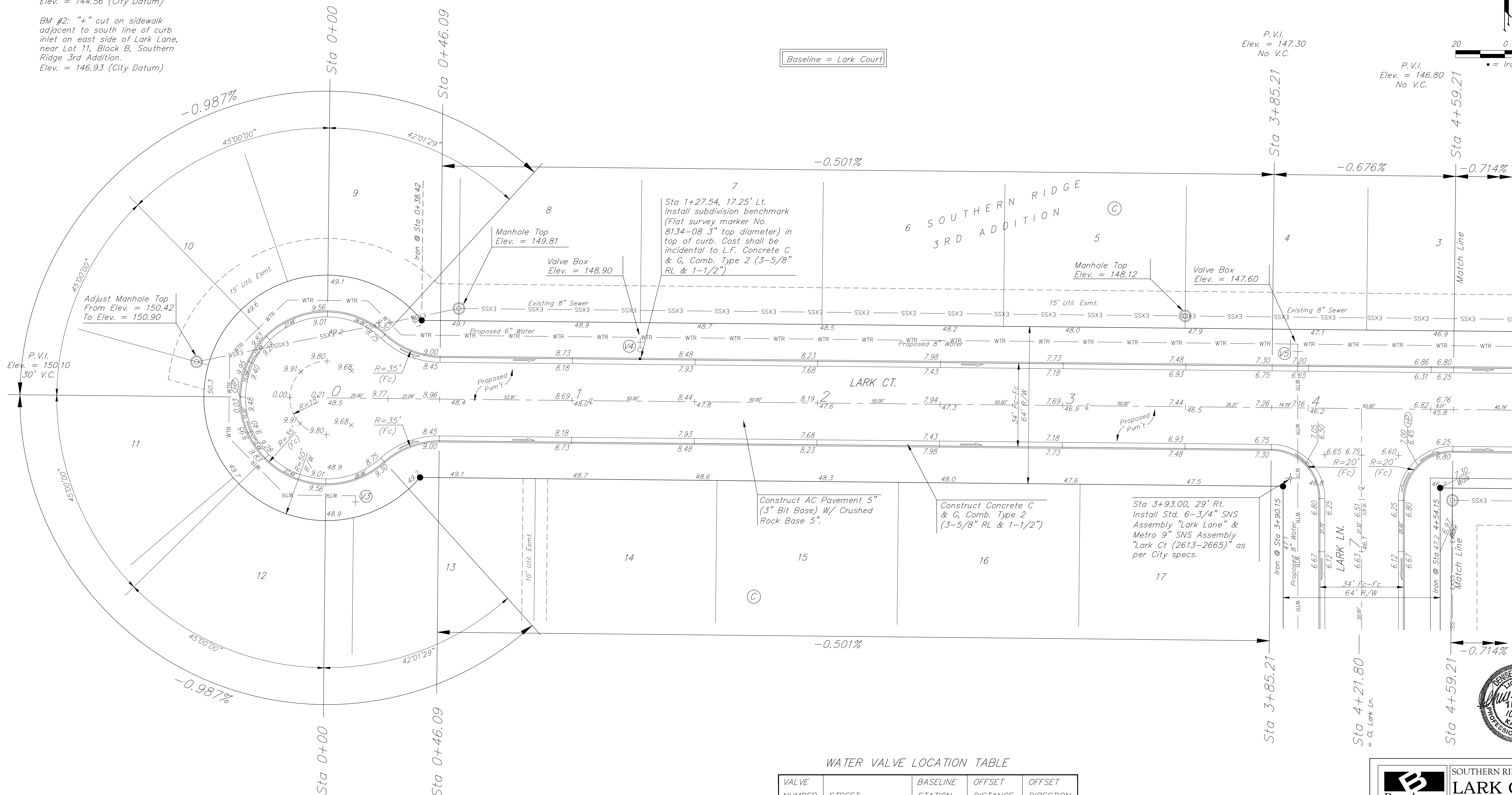


BENCHMARKS:
 BM #1: "+" cut on sidewalk adjacent to manhole, east side of Lark Lane, north of Lot 1, Block B, Southern Ridge 3rd Addition. Elev. = 144.56 (City Datum)

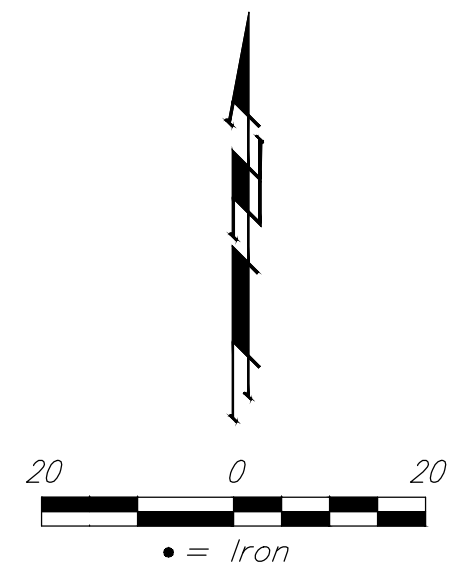
BM #2: "+" cut on sidewalk adjacent to south line of curb inlet on east side of Lark Lane, near Lot 11, Block B, Southern Ridge 3rd Addition. Elev. = 146.93 (City Datum)



Baseline = Lark Court

P.V.I. Elev. = 147.30 No V.C.

P.V.I. Elev. = 146.80 No V.C.



WATER VALVE LOCATION TABLE

VALVE NUMBER	STREET	BASELINE STATION	OFFSET DISTANCE	OFFSET DIRECTION
V3	Lark Ct.	0+12.20	39.73'	Rt.
V4	Lark Ct.	1+27.54	26'	Lt.
V5	Lark Ct.	3+95.52	26'	Lt.

Paving contractor will be responsible to operate all water valves on the project, in the presence of the inspector, to ensure accessibility to the valves, and that all valves (except blowoffs) are left in the "ON" position when the project is completed.

NOTE: ROLL TYPE CURB & GUTTER (TYPE 2) TO BE CONSTRUCTED ON THE PAVEMENT SHOWN ON THIS SHEET. TOP OF CURB ELEVATIONS ARE GIVEN FOR FULL HEIGHT CURB (TYPE 4).

Subdivision Bench Marks

Street & Station	Location Description	Elevation
Lark Ct. 1+27.54, 17.25' Lt.	Adjacent to Fire Hydrant near common lot corner of Lots 7-8, Block C.	



Baughman SOUTHERN RIDGE 3RD ADD. PH. 5A
LARK COURT
 STREET IMPROVEMENTS

Baughman Company, P.A. 315 Ellis St. Wichita, KS 67211 P 316-262-7271 F 316-262-0149
 ENGINEERING | SURVEYING | PLANNING | LANDSCAPE ARCHITECTURE

PROJECT NUMBER: 472-84192
 REVISIONS:

DESIGN: DMV
 DRAWN: TMS
 APPROVED: [Signature]
 DATE: 09/16
 SCALE: Noted
 SHEET: 8 OF 23