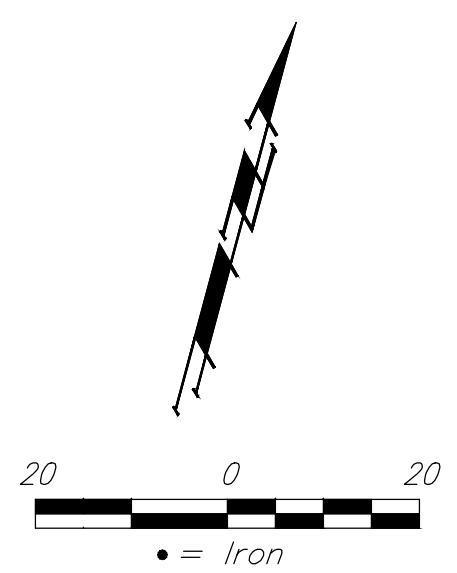


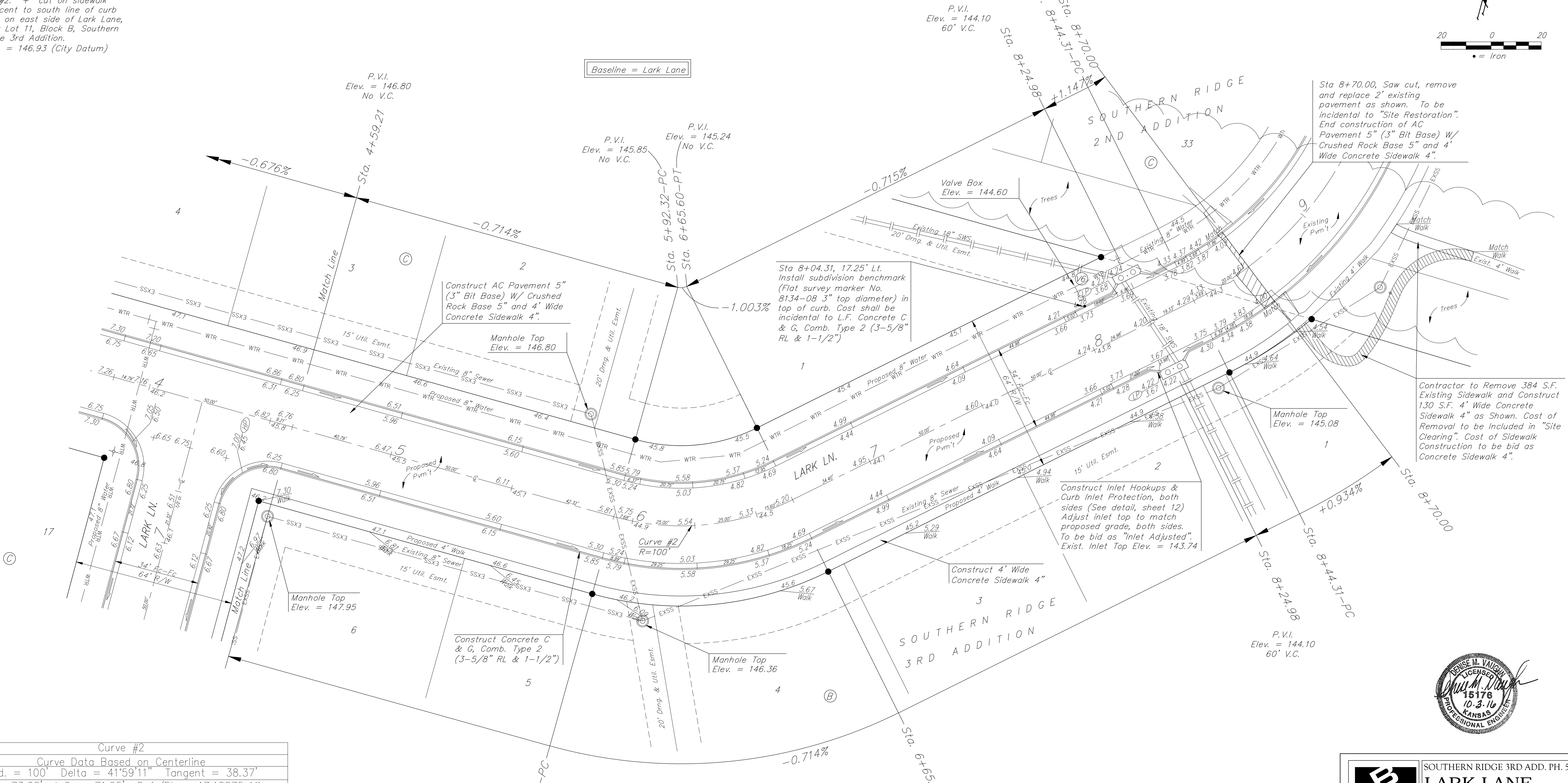
BENCHMARKS:
 BM #1: "+" cut on sidewalk adjacent to manhole, east side of Lark Lane, north of Lot 1, Block B, Southern Ridge 3rd Addition.
 Elev. = 144.56 (City Datum)

BM #2: "+" cut on sidewalk adjacent to south line of curb inlet on east side of Lark Lane, near Lot 11, Block B, Southern Ridge 3rd Addition.
 Elev. = 146.93 (City Datum)

Subdivision Bench Marks		
Street & Station	Location Description	Elevation
Lark Lane 8+04.31, 17.25' Lt.	Adjacent to Fire Hydrant near N.E. corner of Lot 1, Block C.	



Baseline = Lark Lane



Sta 8+70.00, Saw cut, remove and replace 2" existing pavement as shown. To be incidental to "Site Restoration". End construction of AC Pavement 5" (3" Bit Base) W/ Crushed Rock Base 5" and 4" Wide Concrete Sidewalk 4".

Sta 8+04.31, 17.25' Lt. Install subdivision benchmark (Flat survey marker No. 8134-08 3" top diameter) in top of curb. Cast shall be incidental to L.F. Concrete C & G, Comb. Type 2 (3-5/8" RL & 1-1/2")

Contractor to Remove 384 S.F. Existing Sidewalk and Construct 130 S.F. 4' Wide Concrete Sidewalk 4" as Shown. Cost of Removal to be Included in "Site Clearing". Cost of Sidewalk Construction to be bid as Concrete Sidewalk 4".

Construct Inlet Hookups & Curb Inlet Protection, both sides (See detail, sheet 12) Adjust inlet top to match proposed grade, both sides. To be bid as "Inlet Adjusted". Exist. Inlet Top Elev. = 143.74

Construct Concrete C & G, Comb. Type 2 (3-5/8" RL & 1-1/2")

Construct AC Pavement 5" (3" Bit Base) W/ Crushed Rock Base 5" and 4" Wide Concrete Sidewalk 4".

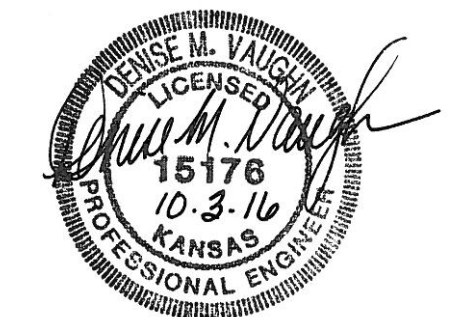
Curve #2					
Curve Data Based on Centerline					
Rad. = 100' Delta = 41°59'11" Tangent = 38.37'					
Arc = 73.28' L.C. = 71.65' Def./Ft. = 17.18875 Min.					
		Face Chord Lengths			
Station	Arc	8' Left	8' Right	Defl.	Total Defl.
5+92.32	-	-	-	0°00'00"	0°00'00"
6+00.00	7.68'	5.76'	9.60'	2°12'01"	2°12'01"
6+25.00	25.00'	18.70'	31.17'	7°09'43"	9°21'44"
6+50.00	25.00'	18.70'	31.17'	7°09'43"	16°31'27"
6+65.60	15.60'	11.69'	19.48'	4°28'09"	20°59'36"

WATER VALVE LOCATION TABLE

VALVE NUMBER	STREET	BASELINE STATION	OFFSET DISTANCE	OFFSET DIRECTION
V6	Lark Lane	8+04.31	26'	Ln.

Paving contractor will be responsible to operate all water valves on the project, in the presence of the inspector, to ensure accessibility to the valves, and that all valves (except blowoffs) are left in the "ON" position when the project is completed.

NOTE: ROLL TYPE CURB & GUTTER (TYPE 2) TO BE CONSTRUCTED ON THE PAVEMENT SHOWN ON THIS SHEET. TOP OF CURB ELEVATIONS ARE GIVEN FOR FULL HEIGHT CURB (TYPE 4).



Baughman SOUTHERN RIDGE 3RD ADD. PH. 5A
LARK LANE
 STREET IMPROVEMENTS

Baughman Company, P.A. 315 Ellis St. Wichita, KS 67211 P 316-262-7271 F 316-262-0149
 ENGINEERING | SURVEYING | PLANNING | LANDSCAPE ARCHITECTURE

PROJECT NUMBER: 472-84192
 REVISIONS:

DESIGNER: DMV
 DRAWN: TMS
 APPROVED: DATE: 09/16
 SCALE: Noted
 SHEET: 9 OF 23

E:\Projects\Southern Ridge 3rd\Phase 5A\STR 06-02-E533.dwg