

# GENERAL NOTES:

- The Contractor shall comply with all applicable safety regulations. All construction shall be completed following current City Standard Specifications and Special Provisions.
- Contractor will be required to provide notice to utility companies a minimum of seventy-two (72) hours prior to any excavation, as follows:
 

Kansas One-Call 687-2470

The Contractor must notify the following in case of an emergency:

AT&T	1-800-246-8464
Black Hills Energy	1-800-694-8989
City of Wichita Water	1-316-268-4555
City of Wichita Sewer	1-316-268-4073
City of Wichita Stormwater	1-316-268-4090
City of Wichita Traffic	1-316-268-4034
Cox Communications	1-888-249-3530
Kansas Gas Service	1-888-482-4950
Westar Energy	1-800-544-4857
- Utility service lines, poles, etc. are to be adjusted as necessary by others prior to construction unless the plans specifically call for their adjustment by the Contractor or unless the plans specifically identify a utility to be adjusted by its owner during construction. Existing utilities and their location, as shown on the plans, represent the best information obtainable for design. The Contractor will be required to work around existing utilities within the right-of-way which do not conflict with proposed construction.
- Rubble from the removal of miscellaneous structures and excess excavation which is to be wasted shall be disposed of on sites to be provided by the Contractor. These sites shall be approved by the Engineer as to suitability, appearance and site location. Locations, in the opinion of the Engineer, that will leave an unsightly appearance will not be approved. All disposal sites must be approved by the Kansas Department of Health and Environment. Material either stockpiled or disposed of in a flood plain would require a Kansas State Board of Agriculture permit. Any material dumped in waters of the United States or wetlands is subject to U.S. Corps. of Engineers permitting regulations. Any material buried or stockpiled beyond approved construction limits would require additional archaeological investigations unless buried in a previously approved borrow location.
- Trees and shrubs in public right-of-way which are in direct conflict with proposed new construction shall be removed by the Contractor with the Engineer's approval. Trees and shrubs which are not in direct conflict with proposed new construction shall be saved and protected from damage.
- The Contractor shall give all property owners and/or tenants of developed property abutting the construction of this project a minimum of ten (10) days notice prior to start of construction.
- The Contractor shall be responsible for preserving property irons. The Contractor will be required to re-establish any property irons which are damaged or destroyed by his construction operations. Such irons shall be re-established by a licensed land surveyor in accordance with state laws.
- The Water Distribution Division shall field locate water valve one time during construction when requested by the Contractor. It shall be the Contractor's responsibility to preserve such field locations during the construction process. Water valves, valve boxes or fire hydrants damaged during construction shall be repaired by Contractor at his own expense. Valve boxes and water meters within the project limits shall be adjusted to match field grades.
- The Contractor shall notify the consultant engineer and Tom Mason with the City at 316-268-4574 with the anticipated construction start date and notify them of project completion. Staking and inspection for this project will be the responsibility of the Contractor.
- If traffic is impacted by construction, a traffic control plan must be submitted and approved by the City Traffic Engineer, Brian Coon at [traffic@wichita.gov](mailto:traffic@wichita.gov) before construction can begin. The Contractor shall be responsible for all traffic control measures to facilitate construction. All construction zone markings and signage shall conform to the latest version of Manual on Uniform Traffic Control Devices (MUTCD) as published by the US Dept. of Transportation, Federal Highway Administration. All costs associated with construction markings and signage shall be the Contractors responsibility.
- All elevations shown are NAVD 88.
- All areas disturbed during construction that will not be under proposed pavement shall be restored to match existing conditions.

- All stubs and plugged pipes shall be located with green plastic tape in the same manner as risers.
- Connecting to Existing Manholes: Prior to laying sewer lines using existing stubs in existing manholes, the Contractor shall expose and verify the elevation, grade and alignment of existing stubs and notify the Engineer of any deviation from the plans. Where connection to an existing manhole that does not have an existing stub or the stub is unusable due to elevation grade or alignment, the Contractor shall bore cut into existing manhole wall to make connection using approved water stop gasket, and reshape the existing manhole invert to provide smooth flow. The cost to connect to existing manholes is incidental to the project.
- Contractor shall limit the extend of trench open overnight and weekends to less than 50 feet.
- Contractor shall provide positive drainage away from all manhole covers.
- The Contractor shall prevent any construction debris from entering the existing sanitary sewer during construction.
- The Contractor shall be responsible for maintaining continuous flow of sewage through construction. Contractors proposed method for maintaining sewage flow shall be submitted and approved by the Sewer Maintenance Division (316-268-4073) prior to starting and by-passing of sewage flows.
- Any over excavation from manhole and pipe removal shall be backfilled with AB-3 compacted to 90-95% ASTM D698.
- City Maintenance of sanitary sewer mains ends at last structure within easement or right-of-way line.
- Any sidewalk, drive approach, curb, or street pavement removed to construct project must have a pavement cut permit and be replaced by the City contractor. Permits can be obtained by calling 316-268-4501 or 316-268-4480.
- All existing and proposed erosion control measures including silt fencing, erosion control mat, straw bales, inlet barriers, and const. entrance shall be maintained throughout construction by the contractor and until project is accepted by the City of Wichita. The on-site engineer shall complete weekly reports on the status of erosion control measures. The contractor shall be required to comply with maintenance and/or replacement of erosion control measures as determined by the on-site engineer until project is accepted by City of Wichita. Maintenance and/or replacement of erosion control measures to be paid by L.S. bid item "Site Restoration".
- All excess excavation shall remain on-site and shall be stockpiled or spread at a location determined by the engineer.
- All areas disturbed during construction shall be seeded, mulched, and fertilized as follows (Permanent Seeding):
 

Seed: Kansas Premium Fescue Blend: 8 lbs./1000 sq. ft.  
Mulch: Prairie Hay: 2 tons/acre  
Fertilizer: 12-24-12: 850 lbs./acre

All costs associated with seeding, mulching, and fertilizing shall be included in bid item "Seeding". All seeding operations shall conform to City of Wichita Standard Specifications.
- The Contractor shall not begin work on the project until the Project Inspector is assigned and on site. Any work completed without inspection will be required to be uncovered for inspection at the Contractor's expense.
- The Contractor to locate structures based on noted control points noted on this sheet.

### Benchmarks

BM #1: Mag Nail with Washer, 225' west of East curb Southwest parking lot. Elev. = 1356.17 (NAVD 88)

BM #2: Mag Nail with Washer, South parking stall in Southeast parking lot, north of football field entrance. Elev. = 1353.64 (NAVD 88)

BM #3: Mag Nail with Washer, east side of perimeter drive, east side of building. Elev. = 1359.68 (NAVD 88)

BM #4: "X" Chiseled on Sidewalk, SE corner of 37th & Tyller roads. Elev. = 1352.75 (NAVD 88)

**AS-BUILTS**  
**CONTRACTOR: MIES CONSTRUCTION**  
**SUPERINTENDENT: ALBERT WILLIAMS**  
**FOREMAN: JOHN MIES**  
**INSPECTED BY: JACOB MORRIS (SCHWAB EATON)**  
**PDF BY: JM (10/27/16)**

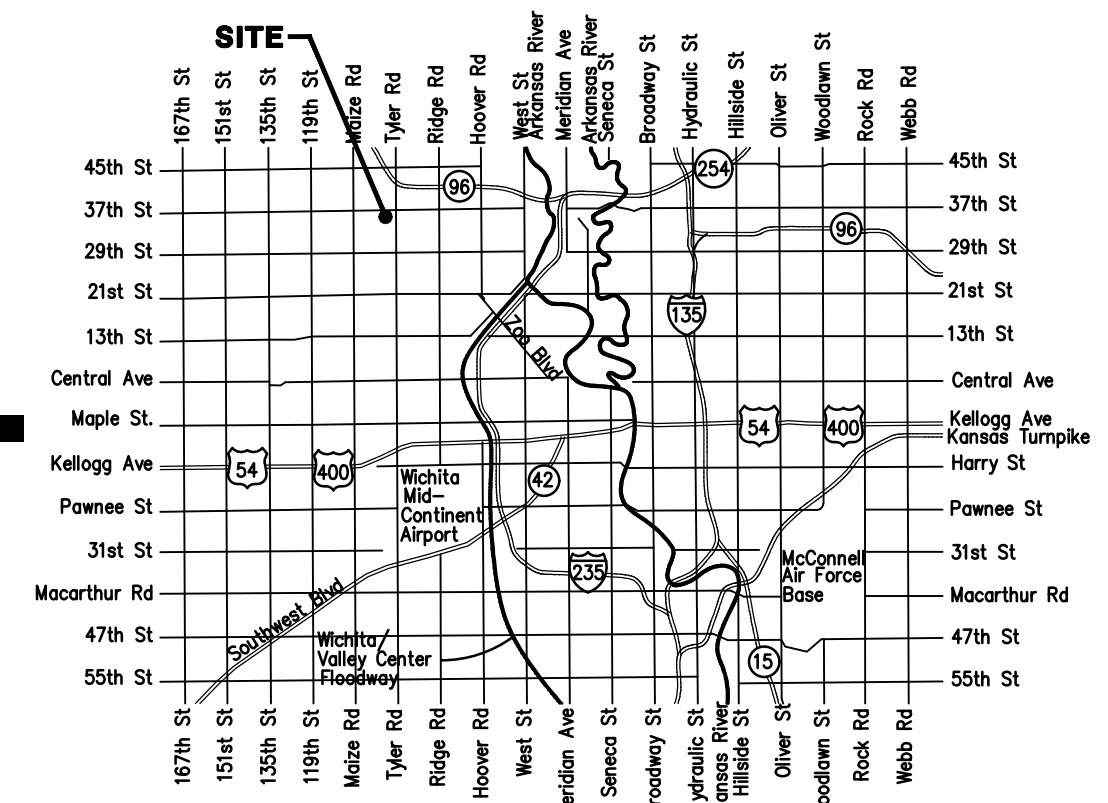
## SANITARY SEWER IMPROVEMENTS to serve

# MAIZE SCHOOL SOUTH CAMPUS ADD.

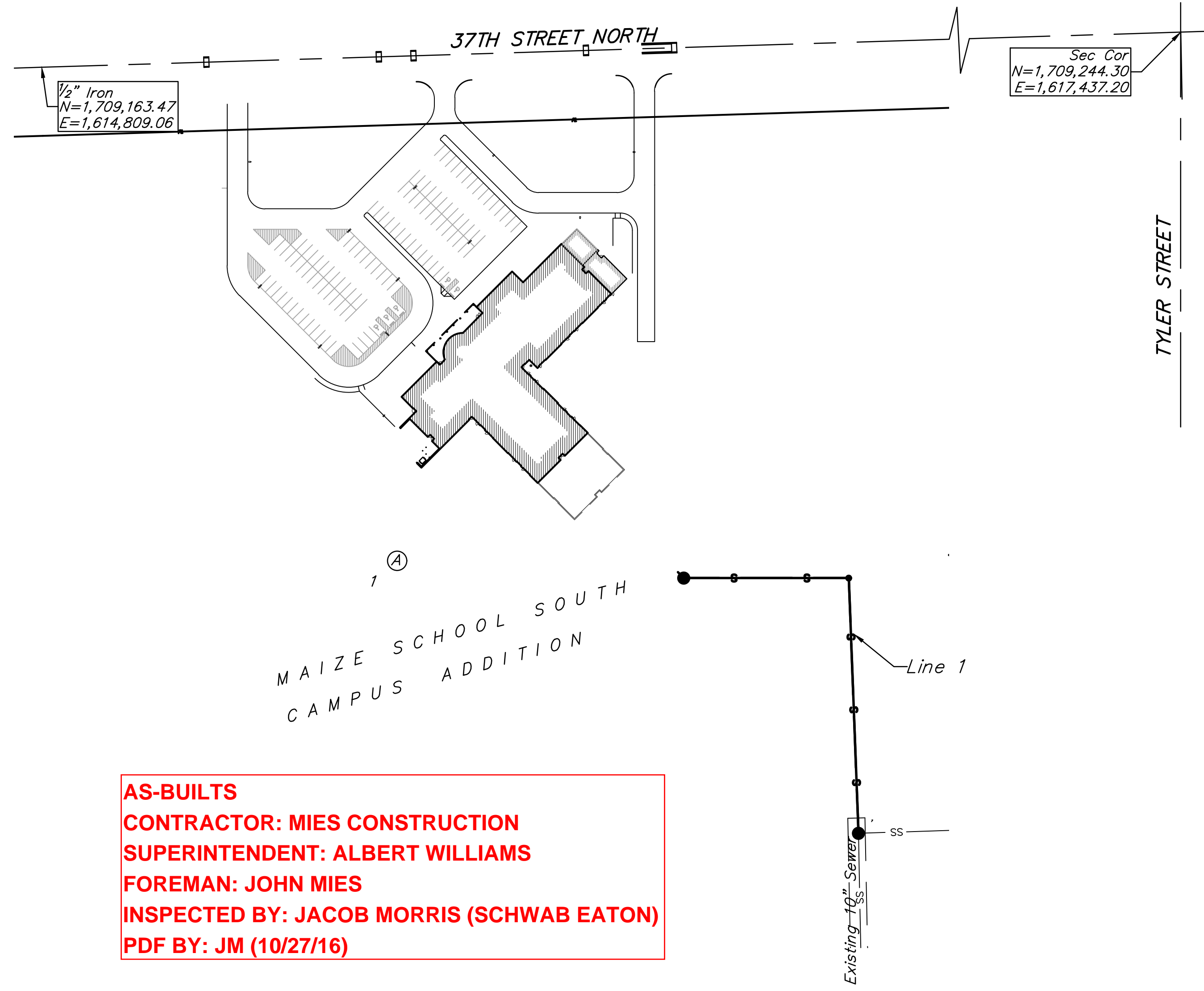
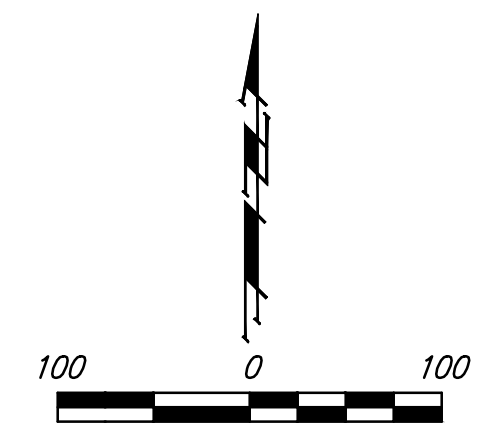
9405 W. 37th Street North  
CITY OF WICHITA, KANSAS

Gary Janzen, P.E. City Engineer  
Project Number  
2284 PPS (607861)

T. Mason - City of Wichita, Inspector  
6" Stub  
Release Date: 10/27/2016  
: apr 10/28/2016



Vicinity Map



### Sheet Index

Title Sheet	1
Line 1	2
Erosion Control Plan	3
Copy of Plat	4

SS Details SS-101, SS-102, SS-103, SS-104 and  
Erosion Control Details available at  
City of Wichita web site at  
<http://www.wichita.gov/Government/Departments/PWU/Pages/Regulations.aspx>

APPROVED AS NOTED  
BY WICHITA PUBLIC WORKS  
ENGINEERING DIVISION

Engineering *Rebecca Duff* 9/7/16

Utilities *[Signature]* 9-7-16

NOTE TO CONTRACTORS

Inspection and testing for this project is to be provided by a Licensed Consulting Engineering Firm under contract with the Owner/Developer. Said Inspection to be in accordance with the City of Wichita standard construction engineering practices and certified by a Licensed Professional Engineer in the state of Kansas. No work shall be performed by the Contractor without such inspection nor shall any work be commenced without written authorization by City Engineering. All Construction and Materials shall comply with the current City of Wichita Specifications and Standards and Special Provisions (on file and available at Wichita.gov).

An approved copy of these plans signed by City staff are required on-site.



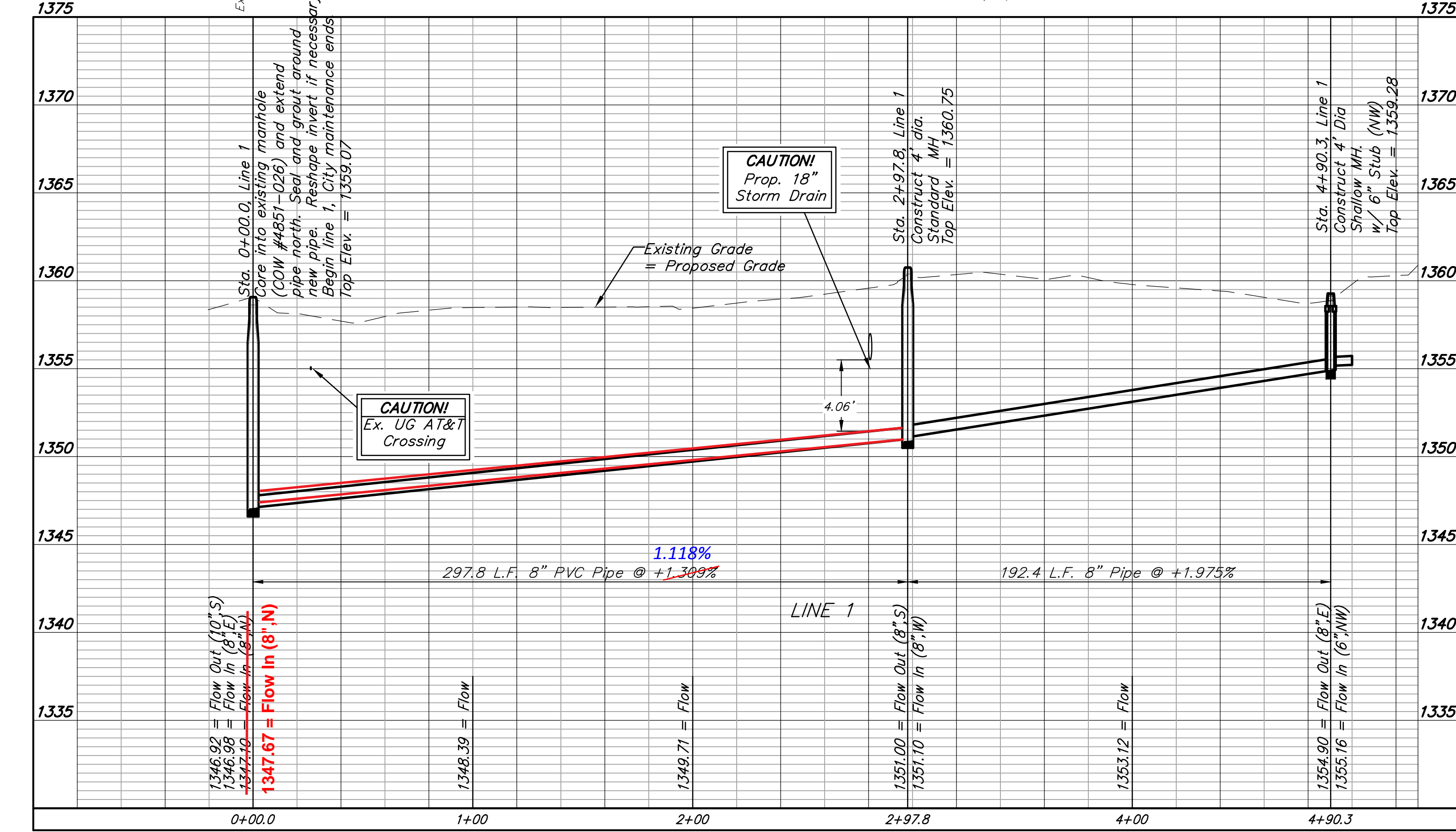
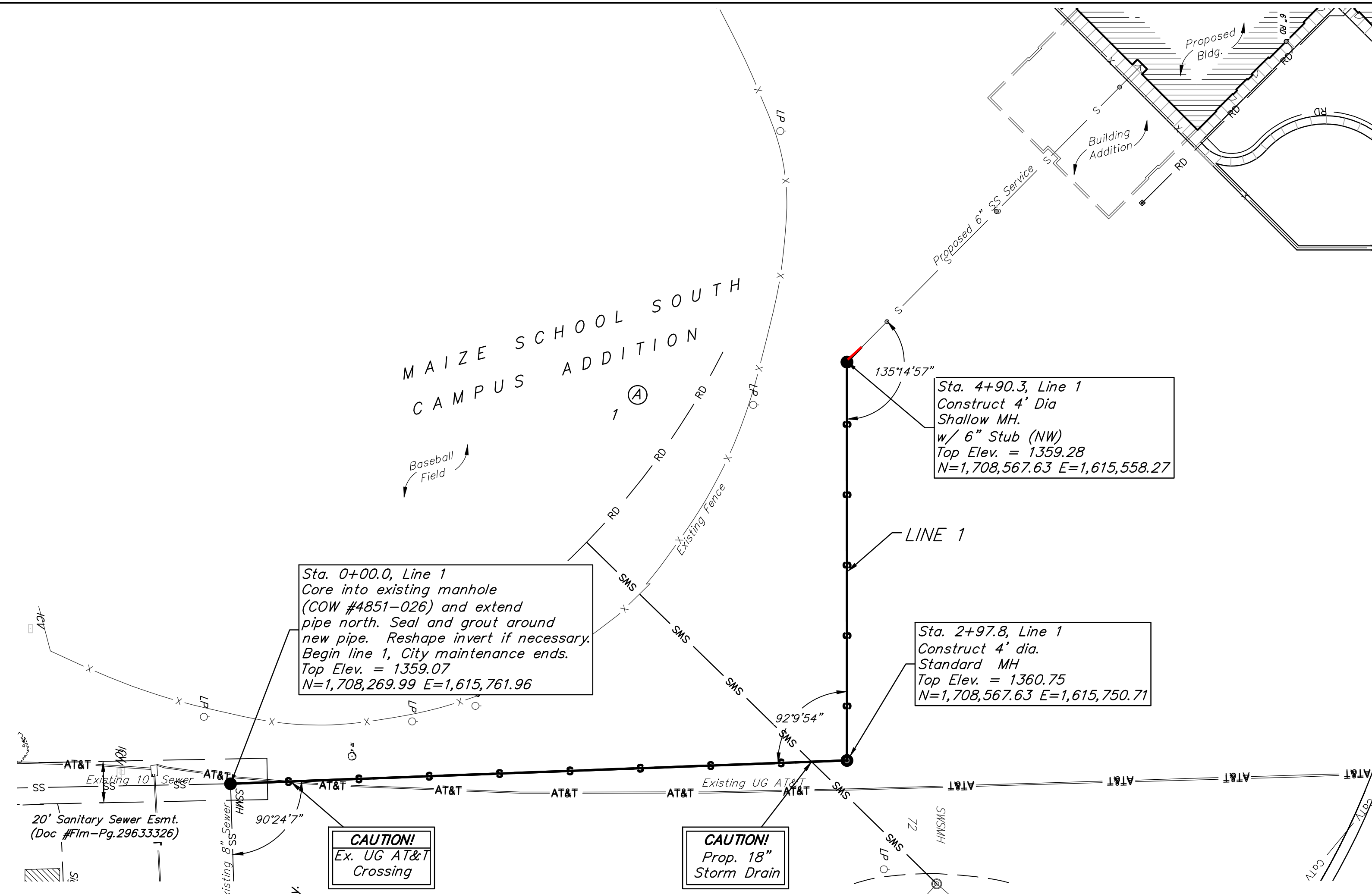
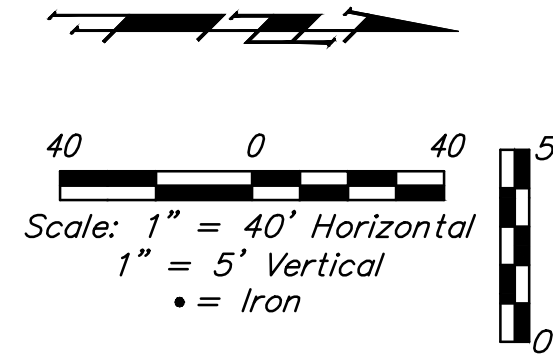
**BENCHMARKS:**

BM #1: Mag Nail with Washer, 225' west of East curb Southwest parking lot. Elev. = 1356.17 (NAVD 88)

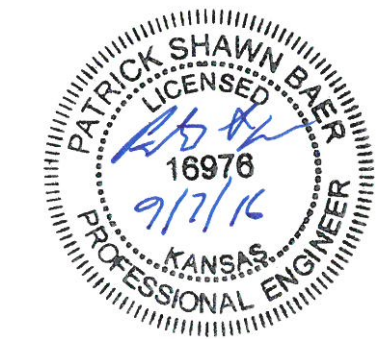
BM #2: Mag Nail with Washer, South parking stall in Southeast parking lot, north of football field entrance. Elev. = 1353.64 (NAVD 88)

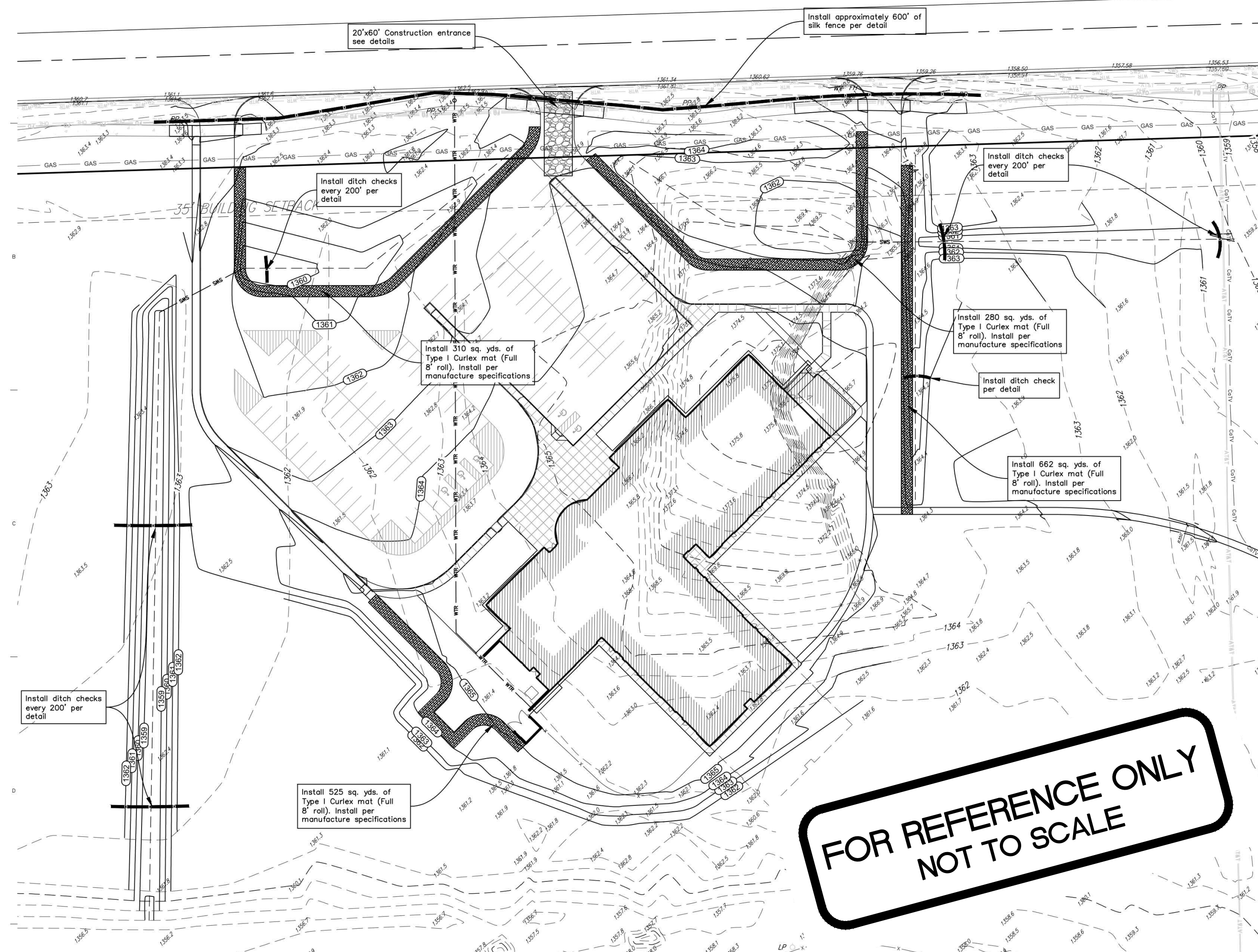
BM #3: Mag Nail with Washer, east side of perimeter drive, east side of building. Elev. = 1359.68 (NAVD 88)

BM #4: "X" Chiseled on Sidewalk, SE corner of 37th & Tyler roads. Elev. = 1352.75 (NAVD 88)



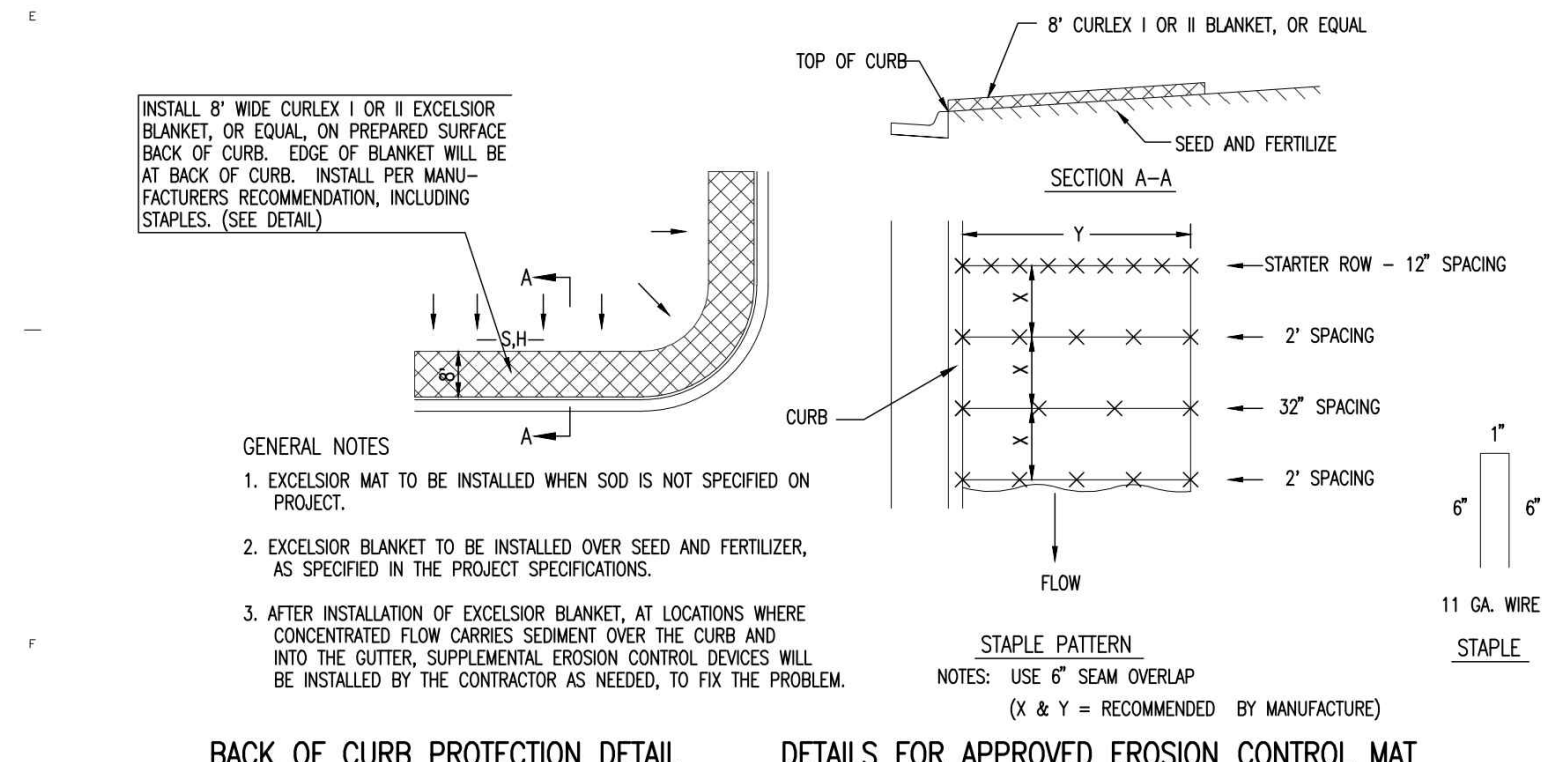
MAIZE EARLY CHILDHOOD CENTER  
**LINE 1**  
 SANITARY SEWER IMPROVEMENTS  
 Baughman Company, P.A.  
 135 E. Main St., Wichita, KS 67211 P: 316-262-2271 F: 316-262-2049  
 LICENSED PROFESSIONAL ENGINEER - KANSAS  
 License No. 18978  
 Date: 7/1/16  
 SHEET 2 OF 4



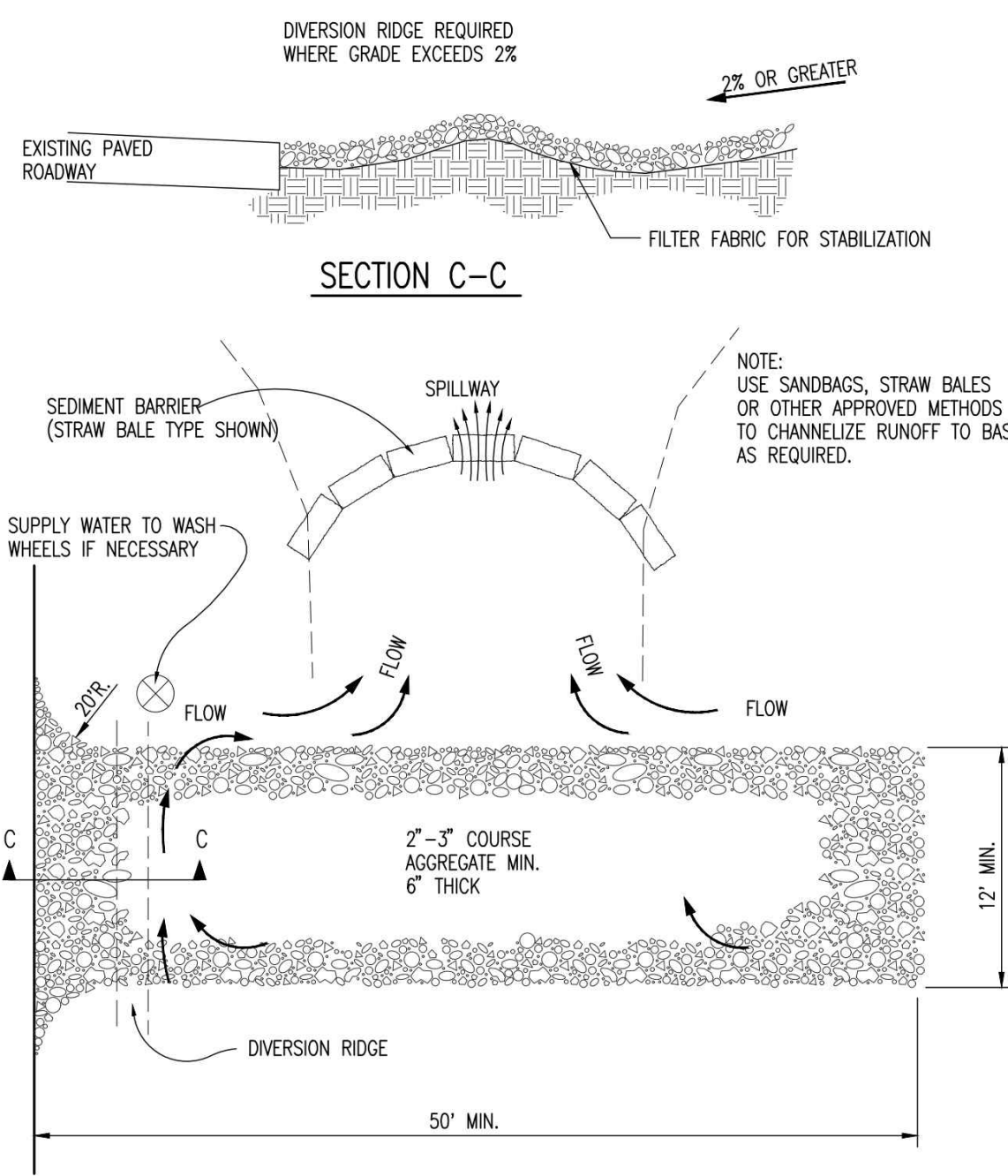


**FOR REFERENCE ONLY  
NOT TO SCALE**

**EROSION CONTROL PLAN**  
Scale 1" = 20'-0"



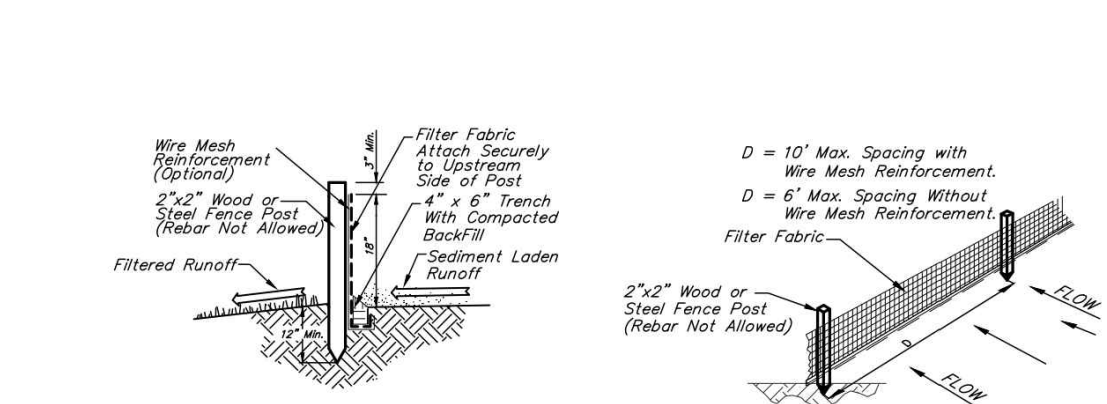
**2 TURF REINFORCEMENT MAT**  
NOT TO SCALE



**GENERAL NOTES**

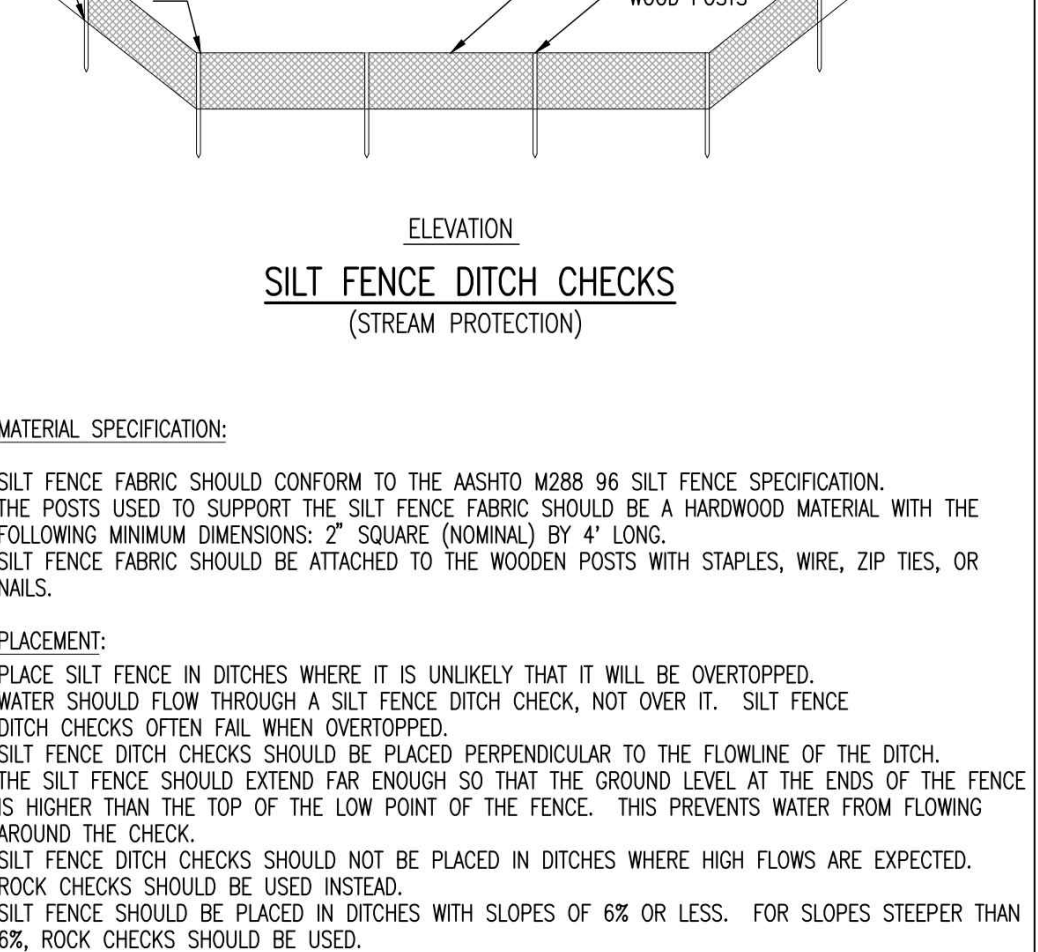
1. THE ENTRANCE SHALL BE MAINTAINED IN A CONDITION THAT WILL PREVENT TRACKING OR FLOWING OF SEDIMENT ONTO PUBLIC RIGHTS-OF-WAY. THIS MAY REQUIRE TOP DRESSING, REPAIR AND/OR CLEANOUT OF ANY MEASURES USED TO TRAP SEDIMENT.
2. WHEN NECESSARY, WHEELS SHALL BE CLEANED PRIOR TO ENTRANCE ONTO PUBLIC RIGHT-OF-WAY.
3. WHEN WASHING IS REQUIRED, IT SHALL BE DONE ON AN AREA STABILIZED WITH CRUSHED STONE THAT DRAINS INTO AN APPROVED SEDIMENT TRAP OR SEDIMENT BASIN, AS SHOWN ABOVE.
4. DRIVE ENTRANCES ONTO RESIDENTIAL LOTS WILL NOT BE REQUIRED TO HAVE THE SEDIMENT BARRIER SHOWN, BUT WHEEL WASHING MAY BE REQUIRED IF STABILIZED ENTRANCE IS NOT SUFFICIENT TO KEEP MUD FROM BEING TRACKED ONTO ADJACENT STREET. ENTRANCE SHALL EXTEND FROM BACK OF CURB TO DWELLING.

**1 CONSTRUCTION ENTRANCE**  
NOT TO SCALE



**5 SILT FENCE DETAIL**  
NOT TO SCALE

NOTE: POINT A MUST BE HIGHER THAN POINT B SO THAT WATER FLOWS OVER THE SILT FENCE FABRIC AND NOT AROUND IT.



**SITE INFORMATION**

Total Area:	7,829,653sq. ft. (±179.74 acres)
Disturbed Area:	279,202 sq. ft. (±6.41 acres)
Impervious Area:	144,351 sq. ft. (±3.31 acres)
PerVIOUS Area:	134,851 sq. ft. (±3.10 acres)

**LEGAL DESCRIPTION**

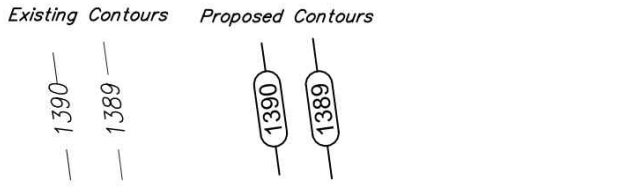
3701 North Tyler Road, Lot 1, Block A, Maize School South Campus Addition, Wichita, Sedgewick County Kansas.

**BENCHMARKS**

- SITE BENCHMARK #3  
Mag Nail with Washer, 225' west of East curb Southwest parking lot. Elevation=1356.17 (NAVD 88)
- SITE BENCHMARK #4  
Mag Nail with Washer, South parking stall in Southeast parking lot, north of football field entrance. Elevation=1353.64 (NAVD 88)
- SITE BENCHMARK #5  
Mag Nail with Washer, east side of perimeter drive, east side of building. Elevation=1359.68 (NAVD 88)
- SITE BENCHMARK #7  
"X" Chiselled on Sidewalk, SE corner of 37th & Tyler roads. Elevation=1352.75 (NAVD 88)

**LAYOUT LEGEND**

Existing Utilities	
—	Electric Underground
—	Electric Overhead
—	Water Line
—	Gas Line
—	Petroleum Pipeline
—	Storm Water Sewer Pipe
—	Sanitary Sewer Line
—	Telecommunication (A&T)
—	Telecommunication (Cox)



**EROSION CONTROL NOTES**

1. No land clearing or grading shall begin until all applicable erosion control measures have been installed. This project is subject to this SWPP Plan. The Contractor shall comply with any unusual requirements as necessary for the site to be in compliance during construction, per this plan and City specs (See #11).
2. All exposed areas shall be seeded as specified within 21 days of final grading. Seed is to include straw mulch, crimped in place per industry standards.
3. Should construction stop for longer than 14 days, the site shall be seeded as specified.
4. Maintain erosion control measures after each rain and at least once a week.
5. This plan shall not be considered all inclusive as the contractor shall take all necessary precautions to prevent soil sediment from leaving the site.
6. Contractor shall comply with all state and local ordinances that apply.
7. Additional erosion and sediment control measures will be installed if deemed necessary by an site inspection.
8. Land disturbing activities shall not commence until approval to do so has been received by governing authorities.
9. If installation of storm drainage system should be interrupted by weather or nightfall, the pipe ends shall be covered with filter fabric.
10. All disturbed R/W areas not intended for pavement or sidewalk construction shall be hydroseeded with a Bermuda / Perennial Ryegrass Seed Mix. See Mass Grading specification sheet for seed mixture rate requirements.
11. This SWPP Plan should be in job trailer and/or on site at all times. The Contractor is responsible for any needed changes, updates or maintenance to BMP's on site. This plan may change and updates need to be recorded and documented on the plan. This plan is a flexible plan, due to changing site conditions and weather. Please inform Landscape Architect and/or Engineer of changes to plan.
12. ANY substitutions for the sediment control devices shown, must be approved by the Landscape Architect and/or Engineer prior to any uses on site.
13. An NPDES Permit Application will not be submitted for this property.
14. SILT Fence is to be constructed to encompass 15' outside the Fair Cloth Skimmers at Sediment Basins 1, 2, & 3. Install Fair Cloth Skimmer per manufactures specifications. Install maintain skimmer & silt fence per SWPPP requirements.
15. The Contractor is not allowed to import or export soil from this site. See site plans for stock pile requirements for this site.
16. Contractor is responsible to maintain existing temporary and permanent erosion control measure during construction. If the existing channels have evidence of erosion, contractor is to restore channel to proposed grades and install curlex type I TRM to maintain channel until permanent vegetation is establish.
17. All areas disturbed shall be permanently seeded and fertilized as follows: K-31 Fescue Seed @ 9#/25,000 sq. ft. & Fertilizer 12-24-12 @ 1#/1,000 sq. ft. Seeding areas shall be prepared per industry standards.

**EROSION CONTROL LEGEND**

[Symbol]	Silt Fence
[Symbol]	Curb Inlet Sediment Barrier
[Symbol]	Area Inlet Sediment Barrier
[Symbol]	Area Inlet Sediment Barrier
[Symbol]	Construction Entrance
[Symbol]	Curlex mat

**SJCF architecture**  
Empire Center | 357 N. Broadway | Wichita, Kansas 67202-3303 | 316.684.0171

**MAIZE SOUTH HIGH SCHOOL  
ADDITIONS & REMODELS**  
3701 NORTH TYLER ROAD, WICHITA, KS 67205

**EROSION CONTROL PLAN**  
1" = 20"  
**C21.0**

MAIZE EARLY CHILDHOOD CENTER  
**EROSION CONTROL PLAN**  
SANITARY SEWER IMPROVEMENTS

**Baughman Company, P.A.**  
115 E. Hill St., Wichita, KS 67201 | P: 316.262.2121 | F: 316.262.2149  
www.baughman.com | www.baughmanpa.com | www.baughmanarch.com | www.baughmaneng.com

REVISIONS

NO.	DATE	DESCRIPTION
1	4-8-16	Issue for Review
2	4-8-16	Issue for Review
3	4-8-16	Issue for Review
4	4-8-16	Issue for Review
5	4-8-16	Issue for Review
6	4-8-16	Issue for Review
7	4-8-16	Issue for Review
8	4-8-16	Issue for Review
9	4-8-16	Issue for Review
10	4-8-16	Issue for Review
11	4-8-16	Issue for Review
12	4-8-16	Issue for Review
13	4-8-16	Issue for Review
14	4-8-16	Issue for Review
15	4-8-16	Issue for Review
16	4-8-16	Issue for Review
17	4-8-16	Issue for Review
18	4-8-16	Issue for Review
19	4-8-16	Issue for Review
20	4-8-16	Issue for Review
21	4-8-16	Issue for Review
22	4-8-16	Issue for Review
23	4-8-16	Issue for Review
24	4-8-16	Issue for Review
25	4-8-16	Issue for Review
26	4-8-16	Issue for Review
27	4-8-16	Issue for Review
28	4-8-16	Issue for Review
29	4-8-16	Issue for Review
30	4-8-16	Issue for Review
31	4-8-16	Issue for Review
32	4-8-16	Issue for Review
33	4-8-16	Issue for Review
34	4-8-16	Issue for Review
35	4-8-16	Issue for Review
36	4-8-16	Issue for Review
37	4-8-16	Issue for Review
38	4-8-16	Issue for Review
39	4-8-16	Issue for Review
40	4-8-16	Issue for Review
41	4-8-16	Issue for Review
42	4-8-16	Issue for Review
43	4-8-16	Issue for Review
44	4-8-16	Issue for Review
45	4-8-16	Issue for Review
46	4-8-16	Issue for Review
47	4-8-16	Issue for Review
48	4-8-16	Issue for Review
49	4-8-16	Issue for Review
50	4-8-16	Issue for Review
51	4-8-16	Issue for Review
52	4-8-16	Issue for Review
53	4-8-16	Issue for Review
54	4-8-16	Issue for Review
55	4-8-16	Issue for Review
56	4-8-16	Issue for Review
57	4-8-16	Issue for Review
58	4-8-16	Issue for Review
59	4-8-16	Issue for Review
60	4-8-16	Issue for Review
61	4-8-16	Issue for Review
62	4-8-16	Issue for Review
63	4-8-16	Issue for Review
64	4-8-16	Issue for Review
65	4-8-16	Issue for Review
66	4-8-16	Issue for Review
67	4-8-16	Issue for Review
68	4-8-16	Issue for Review
69	4-8-16	Issue for Review
70	4-8-16	Issue for Review
71	4-8-16	Issue for Review
72	4-8-16	Issue for Review
73	4-8-16	Issue for Review
74	4-8-16	Issue for Review
75	4-8-16	Issue for Review
76	4-8-16	Issue for Review
77	4-8-16	Issue for Review
78	4-8-16	Issue for Review
79	4-8-16	Issue for Review
80	4-8-16	Issue for Review
81	4-8-16	Issue for Review
82	4-8-16	Issue for Review
83	4-8-16	Issue for Review
84	4-8-16	Issue for Review
85	4-8-16	Issue for Review
86	4-8-16	Issue for Review
87	4-8-16	Issue for Review
88	4-8-16	Issue for Review
89	4-8-16	Issue for Review
90	4-8-16	Issue for Review
91	4-8-16	Issue for Review
92	4-8-16	Issue for Review
93	4-8-16	Issue for Review
94	4-8-16	Issue for Review
95	4-8-16	Issue for Review
96	4-8-16	Issue for Review
97	4-8-16	Issue for Review
98	4-8-16	Issue for Review
99	4-8-16	Issue for Review
100	4-8-16	Issue for Review

Project Number  
SJCF 5135.00

Date  
28 JUNE 2016

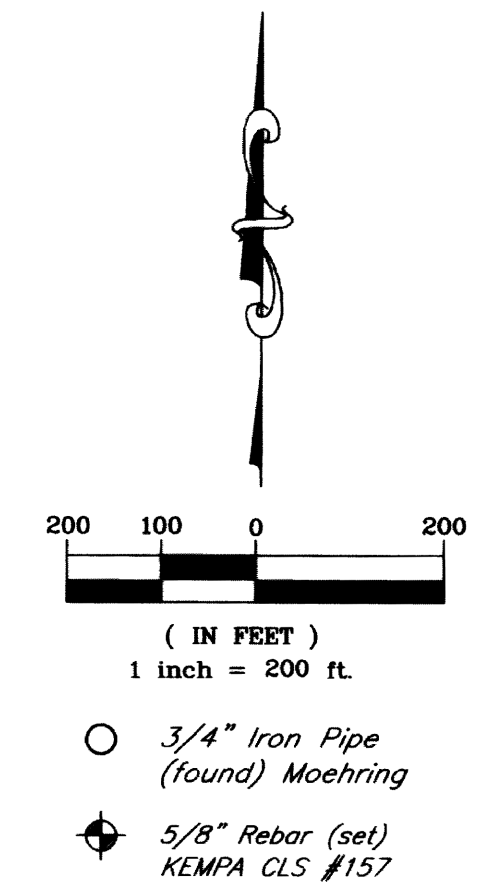
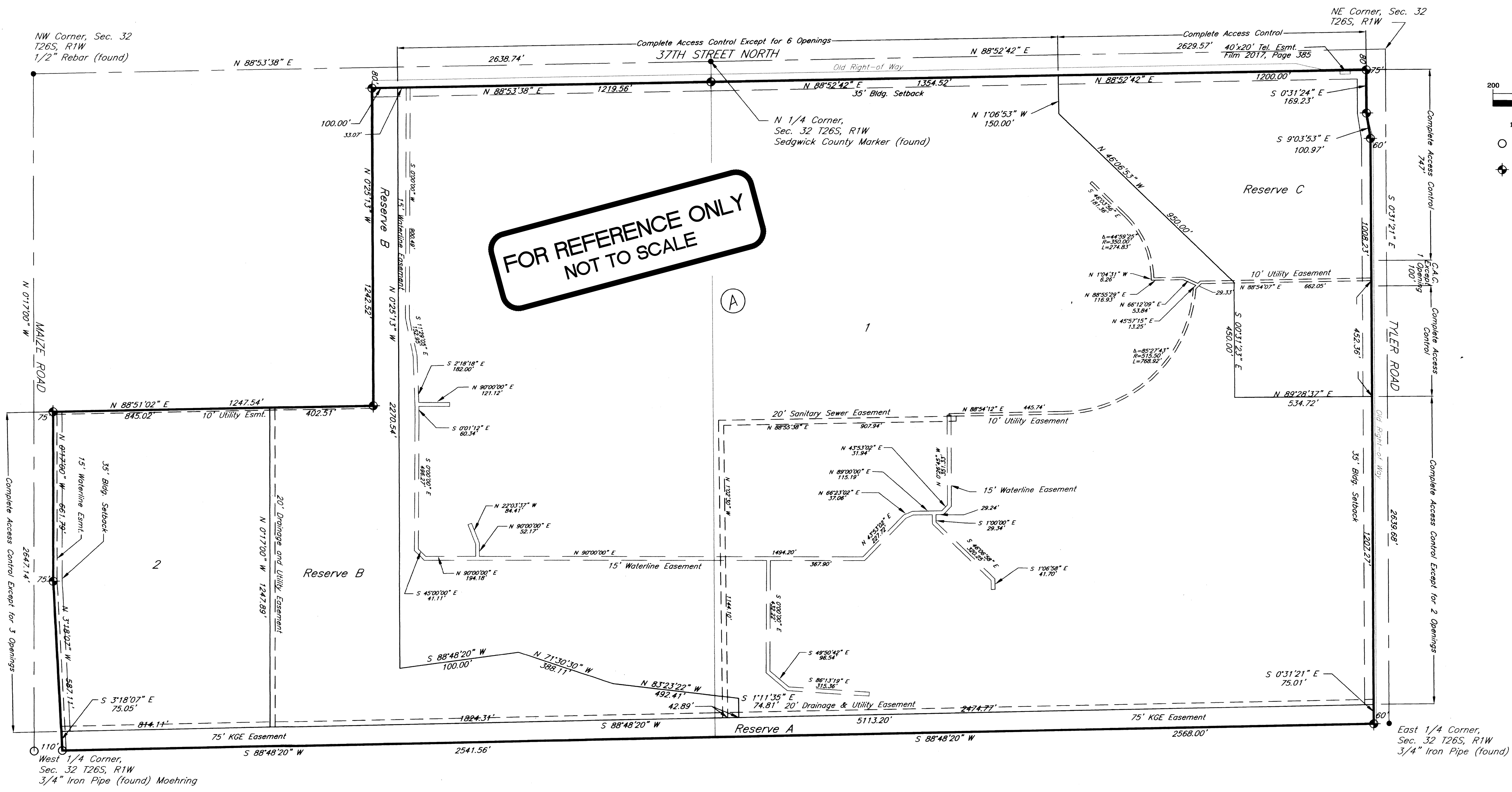
EROSION CONTROL PLAN  
1" = 20"  
**C21.0**

SHEET  
3  
4

# MAIZE SCHOOL SOUTH CAMPUS ADDITION

WICHITA, SEDGWICK COUNTY, KANSAS

Part of the North 1/2, Section 32, Township 26 South, Range 1 West of the 6th. P.M.



MAIZE EARLY CHILDHOOD CENTER  
Baughman Company, P.A.  
1515 E. 15th St., Wichita, KS 67202  
P: 316-262-0149  
F: 316-262-0149  
www.baughman.com  
Baughman

MAIZE EARLY CHILDHOOD CENTER  
Baughman Company, P.A.  
1515 E. 15th St., Wichita, KS 67202  
P: 316-262-0149  
F: 316-262-0149  
www.baughman.com  
Baughman

Copy of PLAT

Filename: 07001 Maize South Campus\dwg\Maize South Campus Final Plat.dwg 2 0

**kemiller**  
engineering

516 S. Market, Wichita, KS 67202 316/264-0242