

Sanitary Sewer Improvements RIDGE PORT ADDITION

Reserve "C" & part of Lot 1, Block 1
Private Project: 2142 PPS (607861)
CITY OF WICHITA, KANSAS

Gary Janzen, P.E. City Engineer
October 2012

Benchmarks

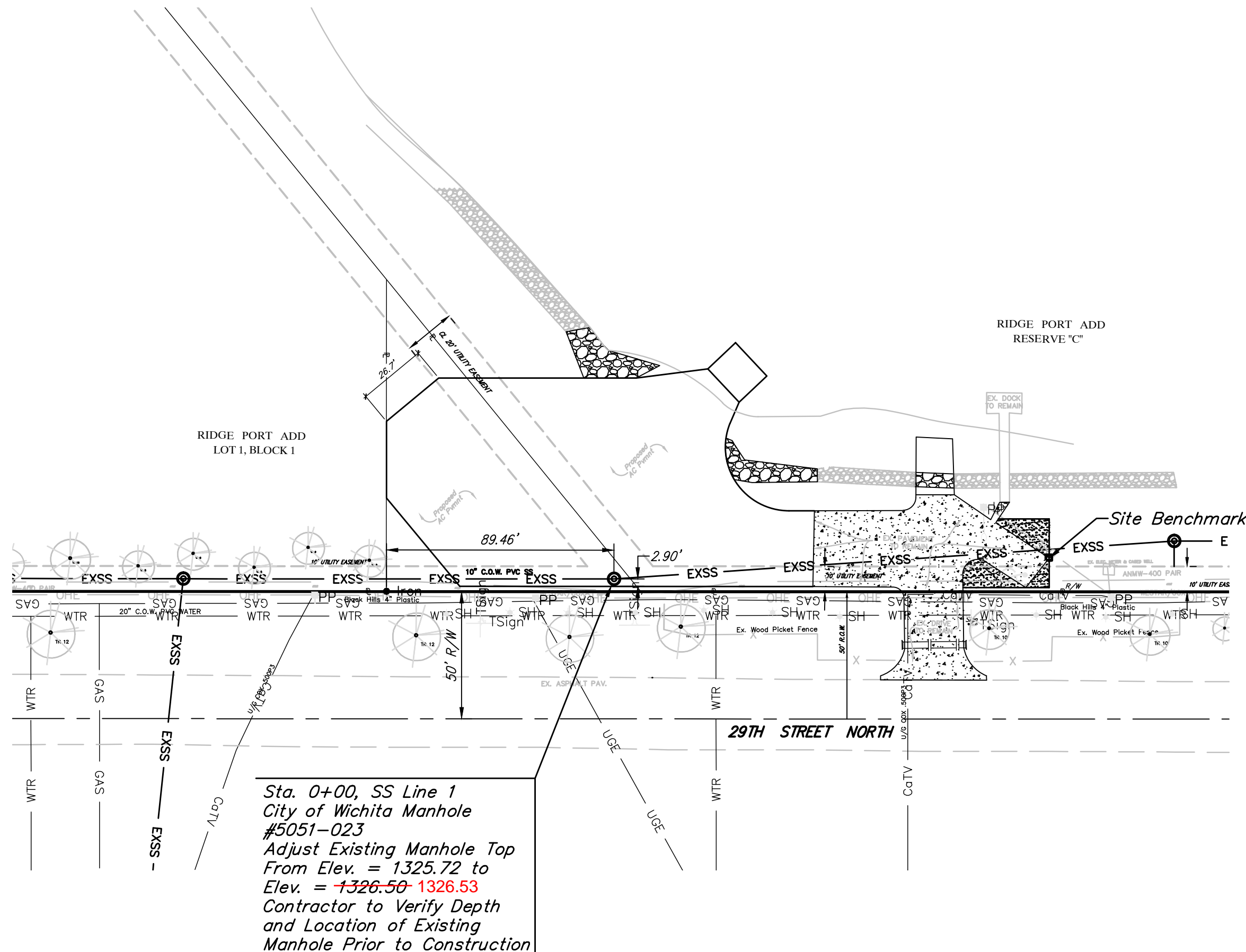
Site Benchmark:
Chiseled square on top of
concrete.
Elev. = 1324.73 (NAVD 88)

Sheet Index

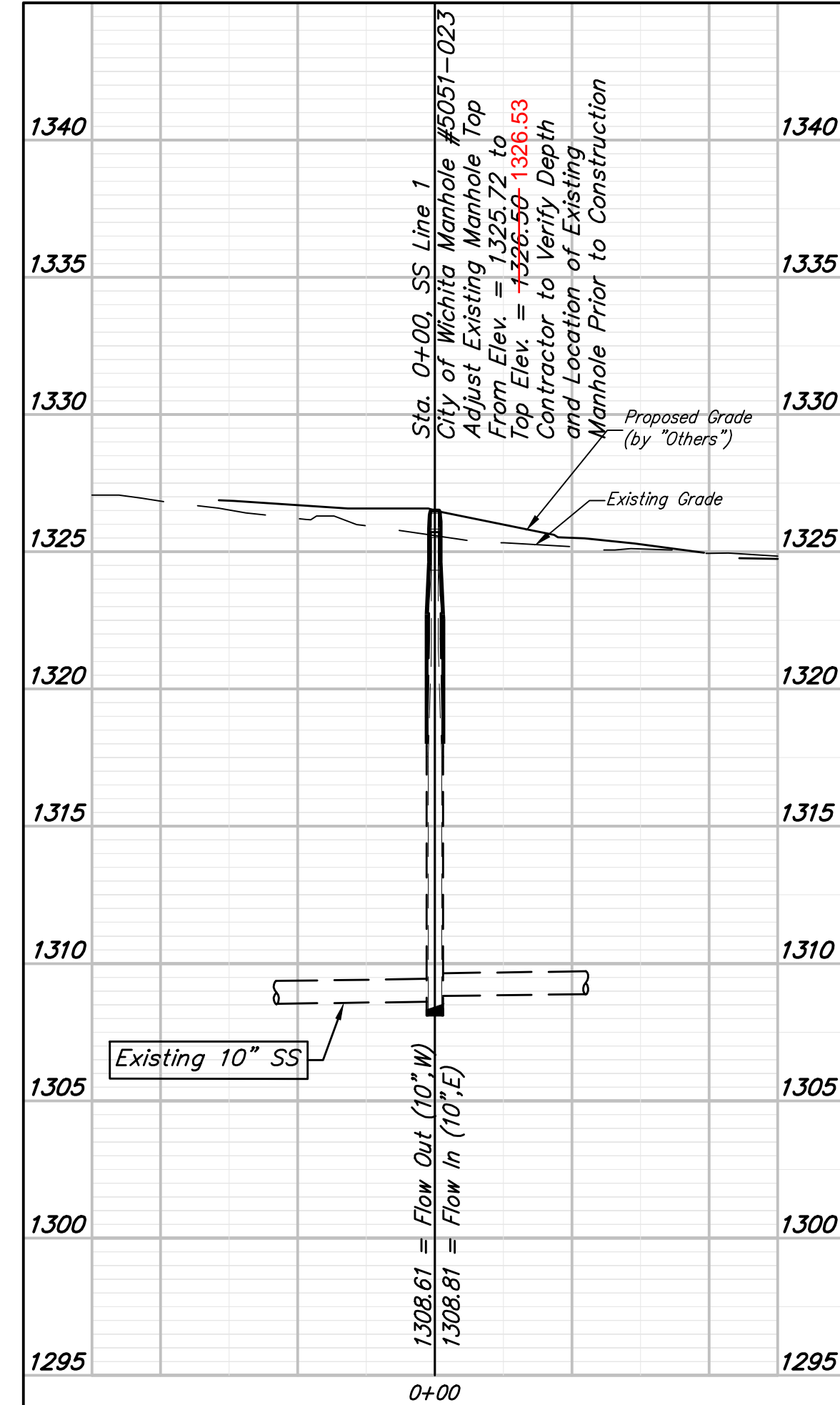
Title Sheet 1

Legal Description

RESERVE "C", Ridge Port Addition, Wichita, Sedgwick County, Kansas. That part of Lot 1, Block 1, Ridge Port Addition, Wichita, Sedgwick County, Kansas described as follows: Beginning at the SE corner of said Lot 1; thence N39°09'31"W along the northeast line of said Lot 1, 158.28 feet; thence S00°01'29"W perpendicular to the south line of said Lot 1, 122.68 feet to a point on the south line of said Lot 1; thence S89°58'31"E along the south line of said Lot 1, 100.00 feet to the point of beginning.

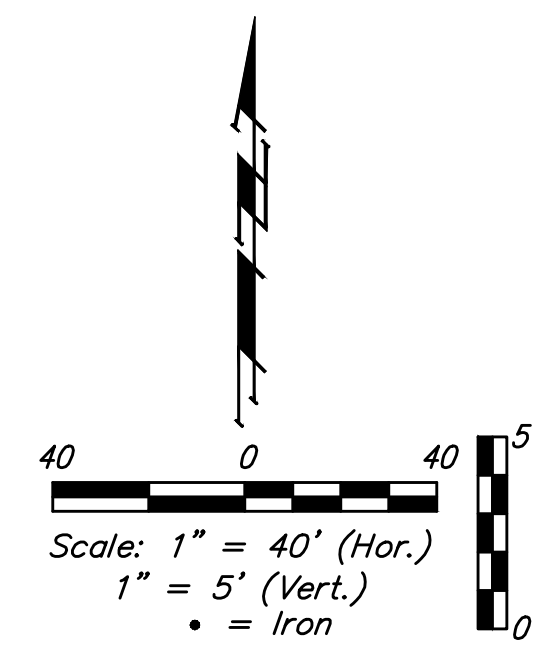


Sta. 0+00, SS Line 1
City of Wichita Manhole #5051-023
Adjust Existing Manhole Top
From Elev. = 1325.72 to
Elev. = ~~1326.50~~ 1326.53
Contractor to Verify Depth
and Location of Existing
Manhole Prior to Construction



AB-BUILT
PDF by: T. Mason
10-27-16
Release Date: 10/27/16

MANHOLE WAS ADJUSTED WITHOUT THE CITY'S KNOWLEDGE OR ANY INSPECTION. BAUGHMAN CO. WENT OUT AND SHOT THE NEW ELEVATION ON 9-28-16.



GENERAL NOTES:

- Contractor will be required to provide notice to utility companies a minimum of forty-eight (48) hours prior to any excavation, as follows:

Kansas One-Call 687-2470

The Contractor must notify the following in case of an emergency:

Cox Communications 262-4270
Kansas Gas Service 1-888-482-4950
Westar Energy 383-8650
Black Hills Energy (Gas) 1-800-303-0357
ATT 268-2245
City of Wichita Water Dept. 268-4563
City of Wichita Storm Maint. 268-4024
City of Wichita Sewer Maint. 268-4090
City of Wichita Traffic Maint. 268-4034
- Utility service lines, poles, valve boxes, meters, and etcetera are to be adjusted as necessary by others prior to construction unless the plans specifically call for their adjustment by the Contractor or unless the plans specifically identify a utility to be adjusted by its owner during construction. Existing utilities and their location, as shown on the plans, represent the best information obtainable for design. The Contractor will be required to work around existing utilities within the right-of-way which do not conflict with proposed construction.
- All disturbed R/W areas not intended for pavement or sidewalk construction shall be seeded with Kansas Premium Fescue Blend at a rate of 8 lb./1000 Sq. Ft., fertilized with a 16-20-6 ratio at a rate of 4 lb./1000 Sq. Ft., and mulched with Prairie Hay at a rate of 92 lb./1000 Sq. Ft. Mulch shall be "patted" with forks or punched into soil to reduce loss due to wind.
- Rubble from the removal of miscellaneous structures and excess excavation which is to be wasted shall be disposed of on sites to be provided by the Contractor. These sites shall be approved by the Engineer as to suitability, appearance and site location. Locations, in the opinion of the Engineer, that will leave an unsightly appearance will not be approved. All disposal sites must be approved by the Kansas Department of Health and Environment. Material either stockpiled or disposed of in a flood plain would require a Kansas State Board of Agriculture permit. Any material dumped in waters of the United States or wetlands is subject to U.S. Corps. of Engineers permitting regulations. Any material buried or stockpiled beyond approved construction limits would require additional archaeological investigations unless buried in a previously approved borrow location.
- Contractor shall furnish the inspector with a copy of the manufacturer's certification for any pipe used on this project after completion of pipe installation. The engineer will not certify the project to the city until pipe certification has been received.
- Trees and shrubs in public right-of-way which are in direct conflict with proposed new construction shall be removed by the Contractor with the Engineer's approval. Trees and shrubs which are not in direct conflict with proposed new construction shall be saved and protected from damage.
- All sewer lines and appurtenances shall be installed in accordance with the most recent edition of City of Wichita, Kansas Standard Specifications for the Construction of City Projects.
- Contractor shall not start work on the project until the project inspector is assigned to the project and is present on the site. Contractor shall not start on the project until all necessary bonds and permits have been obtained. Bonds may include but are not limited to Statutory, Performance & Maintenance Any work done without inspection will be required to be uncovered for inspection.

APPROVED AS NOTED
BY CITY ENGINEER OF WICHITA

Sanitary Sewers *[Signature]* 10-24-12

NOTE TO CONTRACTORS

Installation, inspection and testing for this project is to be provided by a Licensed Consulting Engineering Firm under contract with the Owner/Developer. Said inspection to be in accordance with the City of Wichita standard construction engineering practices and certified by a Licensed Professional Engineer. No work shall be performed in dedicated easements or public right-of-way by the Contractor without such inspection nor shall any work be commenced without written authorization by the City Engineer. All Construction and Materials shall comply with the City of Wichita Specifications and Standards (on file and available in the City Engineer's Office).

