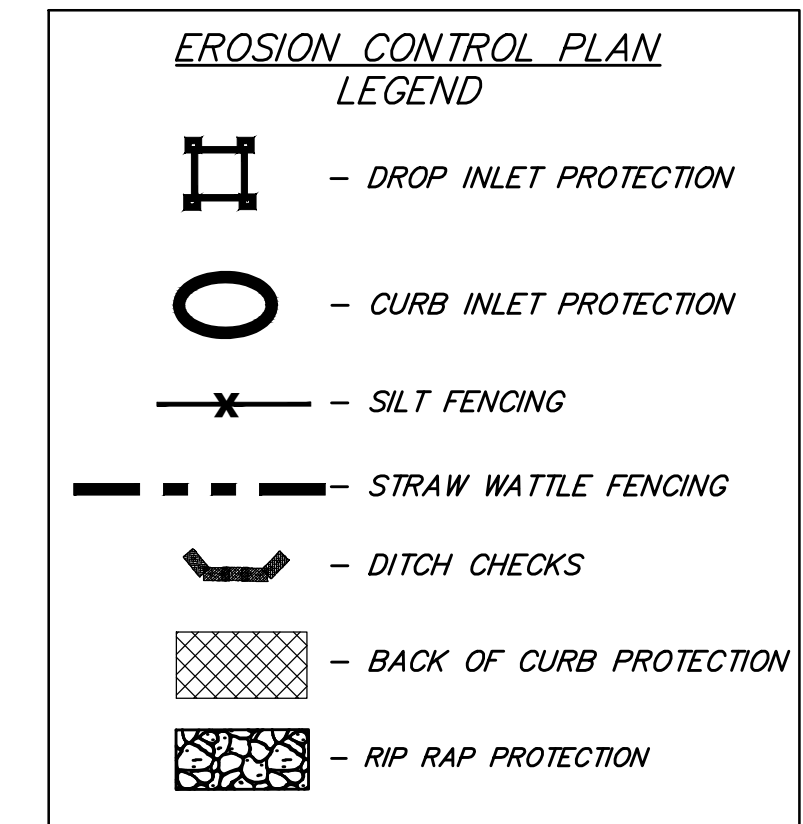
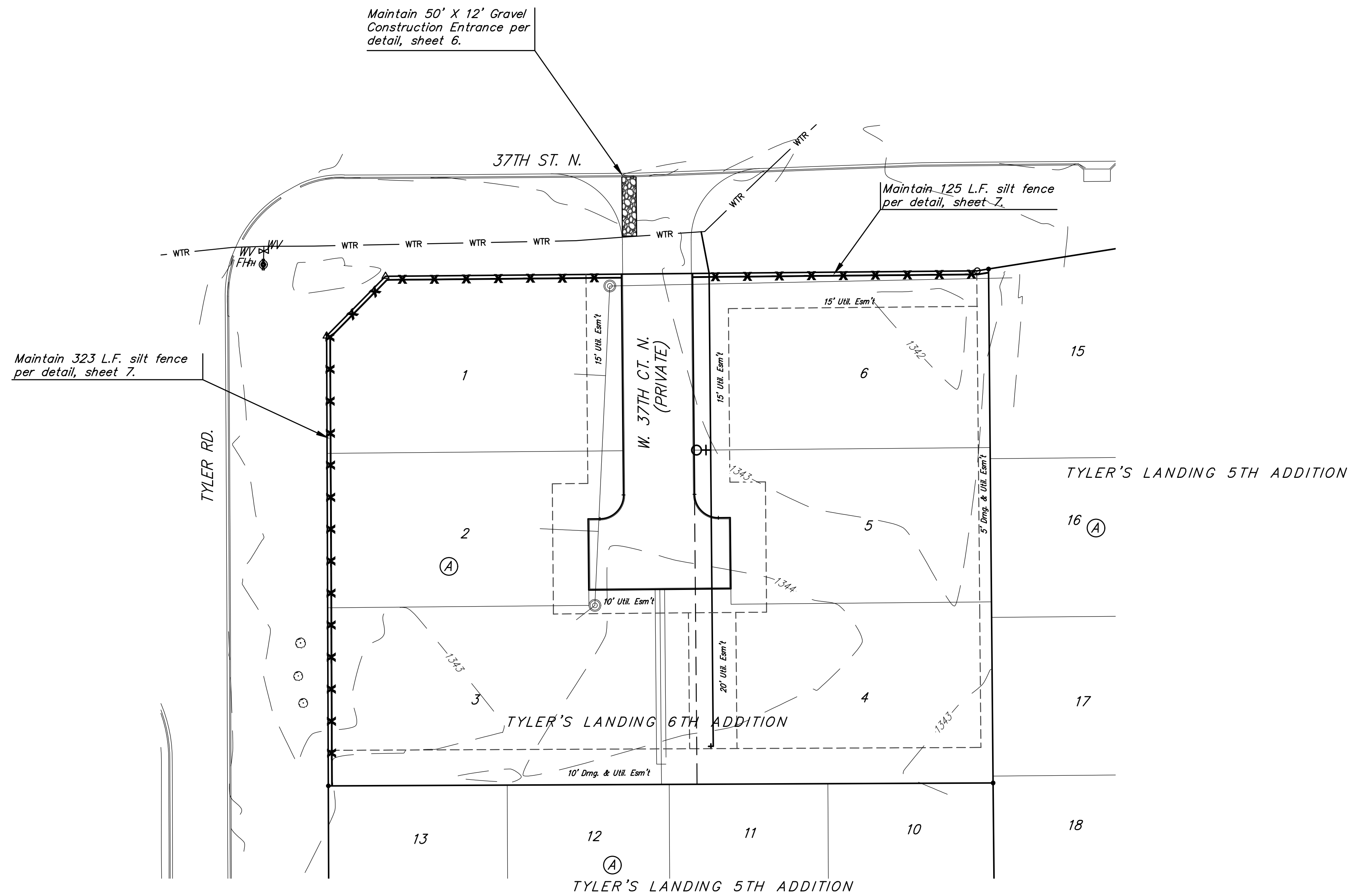
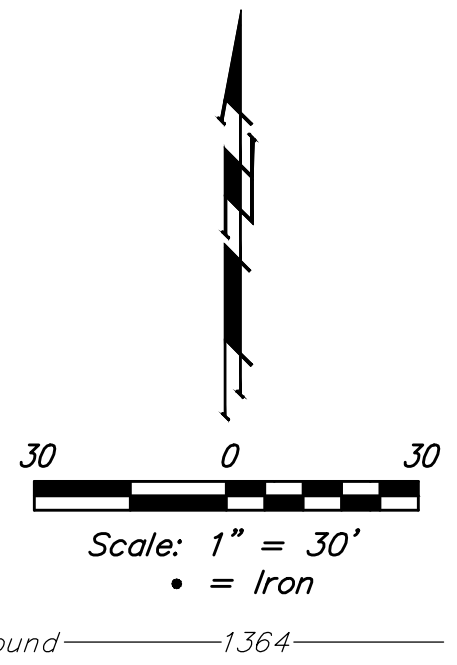


BENCHMARKS:

BM#1: "□" Cut with Cross in Curb Return at Southeast Corner of Intersection of 37th St. N. and Tyler, Approximately 47' South and 49.5' East of the Center of Intersection Elev. = 1343.53 NAVD88

BM#2: "□" Cut with Cross in South Line of 37th St. N. Approximately 41.5' South and 1,026' East of the Center of the Intersection of 37th St. N. and Tyler. Elev. = 1337.39 NAVD88



NOTES:

Contractor shall make sure all erosion control is in place before project is accepted. This plan represents the minimum standard. Any additional erosion control measures shall be installed by the Contractor as needed.

All areas disturbed during construction shall be seeded, mulched, and fertilized as per Cover Sheet General Notes.

EROSION CONTROL MEASURE	INSTALL	MAINTAIN
CUT-OFF TRENCH (LF)	0	0
CONSTRUCTION ENTRANCE (EA)	0	1
CURB INLET BARRIER (EA)	0	0
DITCH CHECK (EA)	0	0
DROP INLET PROTECTION (EA)	0	0
EROSION CONTROL (LS)	0	0
MULCH WATTLES (LF)	0	0
SILT FENCE (LF)	0	448
EROSION CONTROL MAT (SY)	0	0
MAINTAIN EROSION CONTROL BMP's (LS)	0	0

* ALL EXISTING BMPs INCLUDING CONSTRUCTION ENTRANCE, SEDIMENT BARRIERS, SILT FENCE, CUT-OFF TRENCH, AND EROSION CONTROL MAT SHALL BE MAINTAINED AND REPAIRED IF NECESSARY.



Baughman Tyler's Landing 6th Addition
EROSION CONTROL
Water Distribution System

Baughman Company, P.A. 315 Ellis St. Wichita, KS 67211 P 316-262-7271 F 316-262-0149
ENGINEERING | SURVEYING | PLANNING | LANDSCAPE ARCHITECTURE

PROJECT NUMBER 448-90750	DESIGN AEG	DRAWN DJL
REVISIONS:	APPROVED	DATE 8/16
	SCALE Noted	SHEET

5 OF 12

E:\Projects\Tyler's Landing 6th Addition_16-05-P200\Engineering\Phase 1\WTR\Wtr Plans.dwg