

STORM WATER SEWER #710 to serve **TYLER'S LANDING 6TH ADDITION** CITY OF WICHITA, KANSAS

Gary Janzen, P.E. City Engineer
Project Number
468-85144
OCA Number
751547

GENERAL NOTES:

1. Contractor will be required to provide notice to utility companies a minimum of forty-eight (48) hours prior to any excavation, as follows:

Kansas One-Call	687-2470
-----------------	----------

The Contractor must notify the following in case of an emergency:

Cox Communications	262-4270
Kansas Gas Service	1-888-482-4950
Westar Energy	383-8650
Black Hills Energy	1-800-303-0357
AT&T	268-2245
City of Wichita Water Dept.	268-4563
City of Wichita Sewer Maint.	268-4024
City of Wichita Storm Sewer Maint.	268-4090
City of Wichita Traffic Maint.	268-4034
Conoco Phillips Pipeline Co.	1-877-267-2290
Southern Star Pipeline Co.	529-6600
Kinder-Morgan Pipeline Co.	1-888-844-5658
2. Utility service lines, poles, valve boxes, meters, and etcetera are to be adjusted as necessary by others prior to construction unless the plans specifically call for their adjustment by the Contractor or unless the plans specifically identify a utility to be adjusted by its owner during construction. Existing utilities and their location, as shown on the plans, represent the best information obtainable for design. The Contractor will be required to work around existing utilities within the right-of-way which do not conflict with proposed construction.
3. Rubble from the removal of miscellaneous structures and excess excavation which is to be wasted shall be disposed of on sites to be provided by the Contractor. These sites shall be approved by the Engineer as to suitability, appearance and site location. Locations, in the opinion of the Engineer, that will leave an unsightly appearance will not be approved. All disposal sites must be approved by the Kansas Department of Health and Environment. Material either stockpiled or disposed of in a flood plain would require a Kansas State Board of Agriculture permit. Any material dumped in waters of the United States or wetlands is subject to U.S. Corps. of Engineers permitting regulations. Any material buried or stockpiled beyond approved construction limits would require additional archaeological investigations unless buried in a previously approved borrow location.
4. Trees and shrubs in public right-of-way which are in direct conflict with proposed new construction shall be removed by the Contractor ONLY with the Developer or Baughman Company approval. Trees and shrubs which are not in direct conflict with proposed new construction shall be saved and protected from damage.
5. The Contractor shall give all property owners and/or tenants of developed property abutting the construction of this project a minimum of ten (10) days notice prior to start of construction.
6. The Contractor shall be responsible for preserving property irons. The Contractor will be required to re-establish any property irons which are damaged or destroyed by his construction operations. Such irons shall be re-established by a licensed Land Surveyor in accordance with state laws.
7. All existing and proposed erosion control measures including silt fencing, erosion control mat, straw bales, inlet barriers, and const. entrance shall be maintained throughout construction by the Contractor and until project is accepted by the City of Wichita. The on-site Engineer shall complete weekly reports on the status of erosion control measures. The Contractor shall be required to comply with maintenance and/or replacement of erosion control measures as determined by the on-site Engineer until project is accepted by City of Wichita. Maintenance and/or replacement of erosion control measures to be paid by L.S. bid item "Maintain Existing BMP's".
8. The Contractor shall adjust valve boxes as necessary to match proposed grade. Cost to be included in bid item, "Site Restoration."
9. Limits of earthwork shall match existing ground elevations at the right-of-way line unless otherwise noted on the plans with a new finished grade elevation. When a new finished grade elevation is shown, the earthwork shall extend one foot beyond the right-of-way line and then slope up or down using permissible slopes to match the existing ground surface.
10. Contractor to remove and replace fence and landscaping as necessary for construction. Contact Kirk Richards PH# (316) 721-7844 one week notice prior to construction.
11. All areas disturbed during construction shall be seeded as follows (Temporary Seeding):

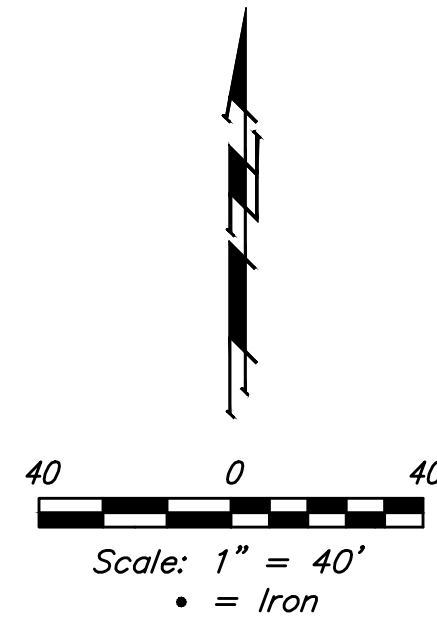
Seed: Ryegrass: 5 lbs/1000 sq. ft.

All seeding operations shall conform to City of Wichita Standard Specifications. All costs associated with seeding shall be included in bid item "Project Seeding".
12. The developer for this project is Jay Russell PH# (316) 722-2417.

BENCHMARKS

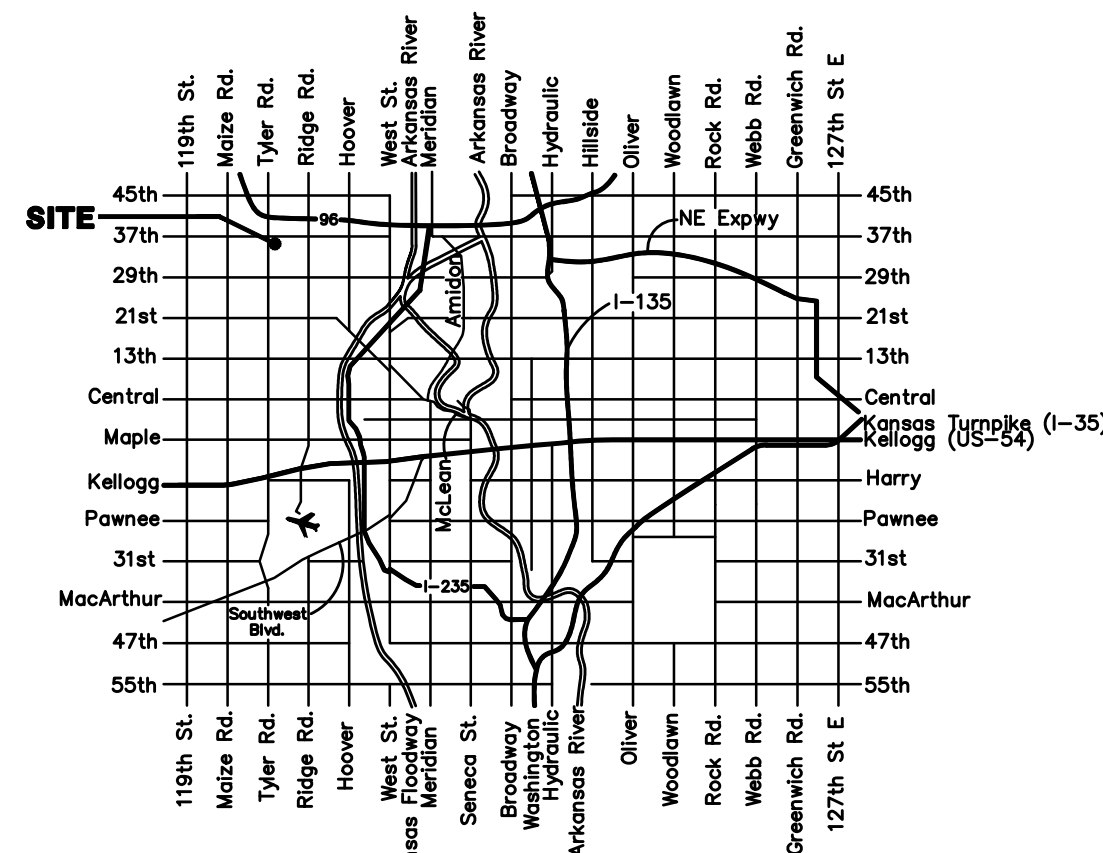
BM #1: "□" Cut with Cross in Curb Return at Southeast Corner of Intersection of 37th St. N. and Tyler, Approximately 47' South and 49.5' East of the Center of Intersection
Elev. = 1343.53 NAVD88

BM #2: "□" Cut with Cross in South Line of 37th St. N. Approximately 41.5' South and 1,026' East of the Center of the Intersection of 37th St. N. and Tyler.
Elev. = 1337.39 NAVD88

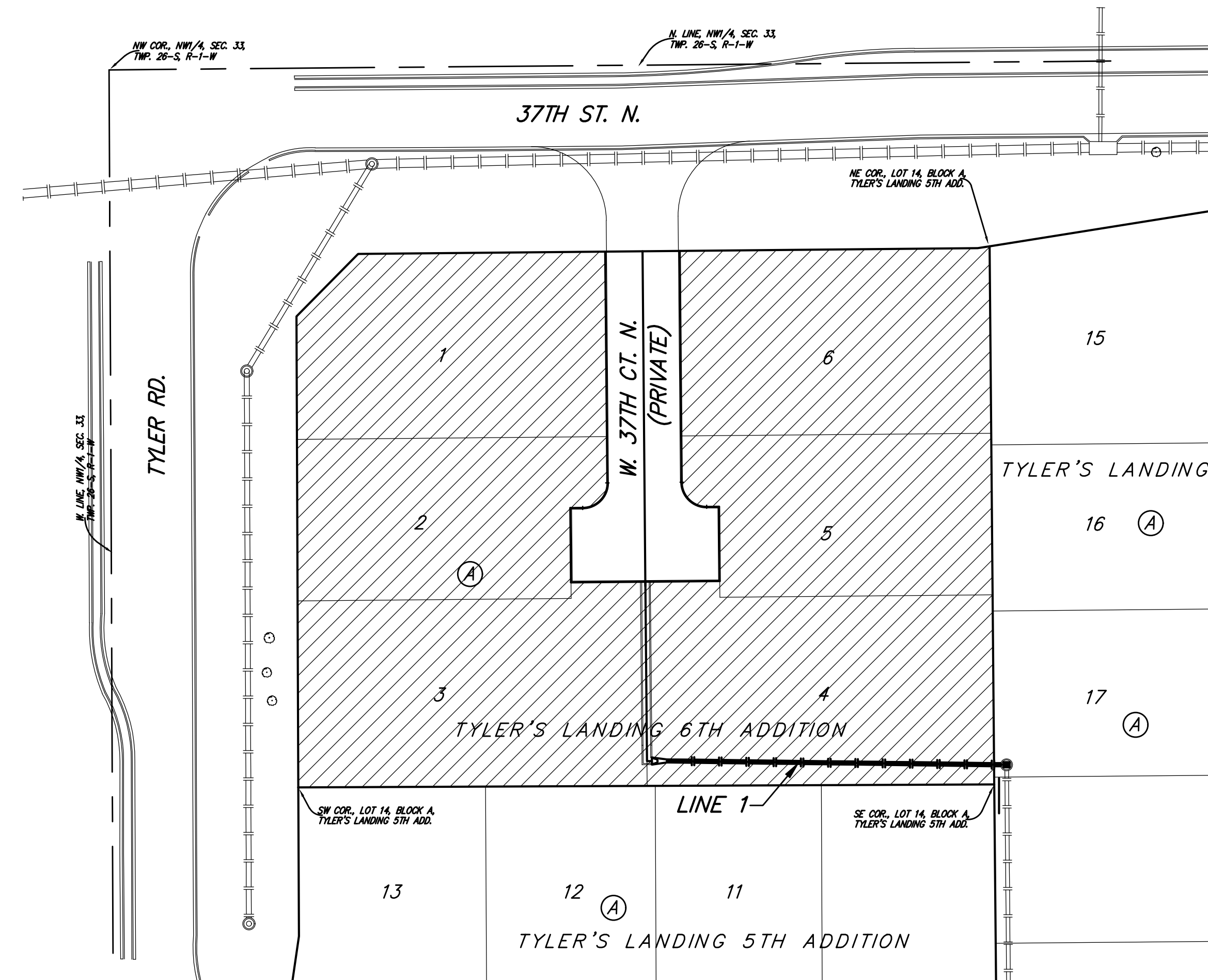


SHEET INDEX

Cover Sheet	1
Line 1	2
Erosion Control/Mass Grading	3
Mass Grading Typical Section	4
Erosion Control BMP Details	5-9
End Section, Pipe Restraint	
Coupler, End Grate	10
Coordinate Sheet	11
Copy of Plat	12



Vicinity Map



EARTH WORK TOTALS (Unadjusted)			
	C. Y. EXCAVATION	C. Y. FILL	BORROW
Total Mass Grading	326	2,253	1,993

Earthwork Quantities reflect the best available topography. The Contractor shall satisfy himself with the earthwork quantities as bid for L.S. bid item "Grading, Mass" prior to bidding.

BENEFIT DISTRICT

