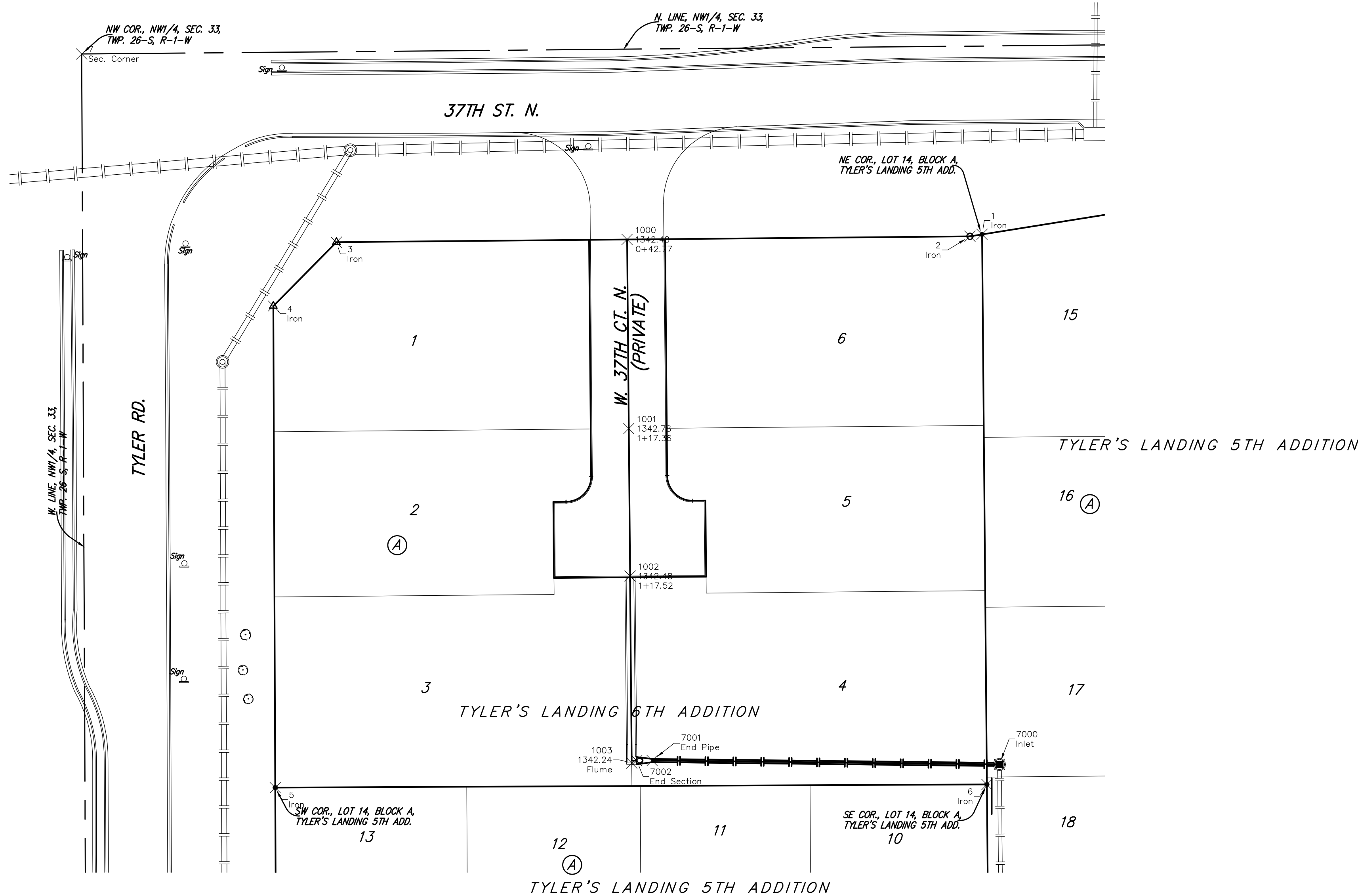
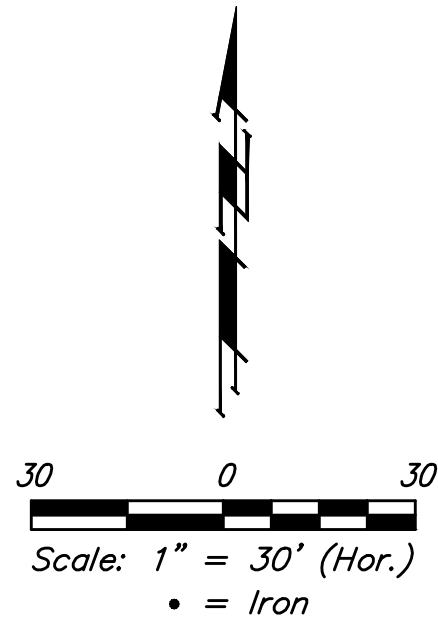


BENCHMARKS:
BM #1: "□" Cut with Cross in Curb Return at Southeast Corner of Intersection of 37th St. N. and Tyler, Approximately 47' South and 49.5' East of the Center of Intersection
 Elev. = 1343.53 NAVD88

BM #2: "□" Cut with Cross in South Line of 37th St. N. Approximately 41.5' South and 1,026' East of the Center of the Intersection of 37th St. N. and Tyler.
 Elev. = 1337.39 NAVD88



Storm Water Sewer

Point Table			
Point #	Northing	Easting	Description
7000	29824.72	40326.54	Inlet
7001	29826.23	40189.59	End Pipe
7002	29826.18	40183.51	End Section

Irons

Point Table			
Point #	Northing	Easting	Description
1	30033.73	40319.69	Iron
2	30032.97	40314.91	Iron
3	30030.66	40065.05	Iron
4	30005.48	40040.19	Iron
5	29815.55	40040.92	Iron
6	29816.78	40321.61	Iron
7	30104.88	39964.59	Sec. Corner

Mass Grading

Point Table				
Point #	Northing	Easting	Row Description	Elevation
1000	30031.72	40179.71	0+42.77	1342.48
1001	29957.13	40180.36	1+17.36	1342.78
1002	29898.98	40180.88	1+17.52	1342.48
1003	29825.23	40181.53	Flume	1342.24



	Tyler's Landing 6th Addition	
	COORDINATE SHEET Storm Water Sewer Improvements	
<small>Baughman Company, P.A. 315 Ellis St. Wichita, KS 67211 F 316-262-7271 F 316-262-0149 ENGINEERING SURVEYING PLANNING LANDSCAPE ARCHITECTURE</small>		
PROJECT NUMBER 468-85144	DESIGN AEG	DRAWN DJL
REVISIONS:	APPROVED	DATE 8/16
SCALE Noted		SHEET 11 OF 12
<small>E:\Projects\Tyler's Landing 6th Addition_16052000\Engineering\Phase 1\STR\SWS Plans.dwg</small>		