

FHWA REGION NO.	STATE	PROJECT NUMBER	FISCAL YEAR	SHEET NUMBER	TOTAL SHEETS
7	KANSAS	87N-0078-01	1997	1	33
FED. AID NO.			STP N007(801)		

STATE OF KANSAS
DEPARTMENT OF TRANSPORTATION
PLAN AND PROFILE OF PROPOSED

29TH STREET NORTH BRIDGE EAST OF OLIVER

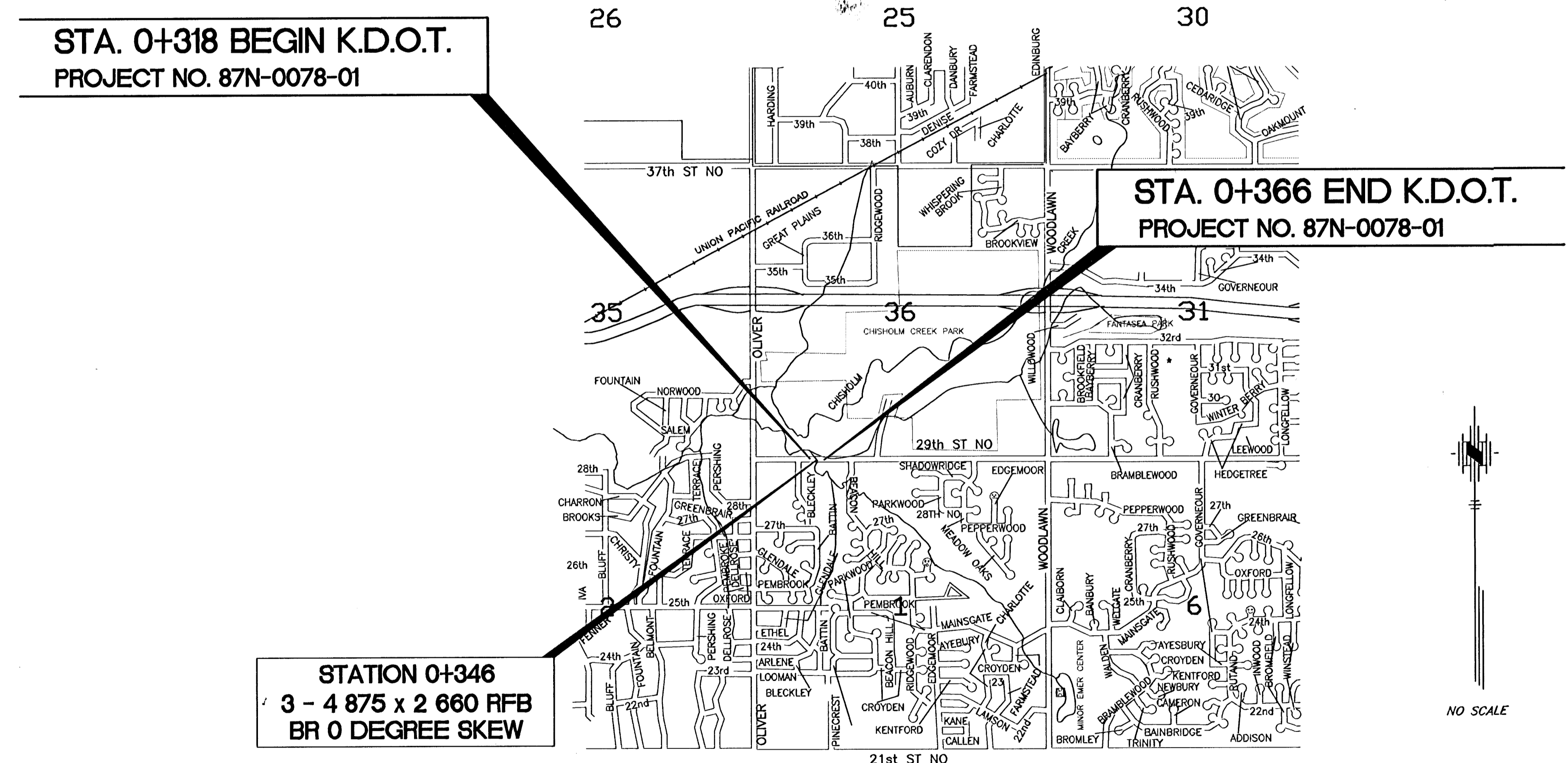
FEDERAL AID URBAN SYSTEM PROJECT

WICHITA, SEDGWICK COUNTY
PROJECT NO. 87N-0078-01
POPULATION = 304,017

GRADING
RFB BRIDGE
SURFACING
SEEDING
PAVEMENT MARKING

INDEX OF SHEETS

- 1 TITLE SHEET
- 2 GENERAL NOTES/TYPICAL SECTION
- 3 PLAN
- 4 PROFILE
- 5-6A CONCRETE BRIDGE APPROACH DETAILS
- 7 CONCRETE SAFETY BARRIER
- 8-8A SCHEDULE OF INLETS & MANHOLES #END SECTIONS
- 9 CONTOUR MAP SHEET
- 10 CONSTRUCTION LAYOUT SHEET
- 11 TRIPLE 4 875 X 2 660 RFB (0° SKEW) STA. 0+346.00
- 12 RCB WINGWALLS - 2.7 M RISE (0° SKEW)
- 13 RCB AUXILIARY DETAILS
- 14 HANDRAIL DETAILS
- 15 BRIDGE PROJECT MARKER
- 16-18 815 mm KANSAS CORRAL RAIL DETAILS
- 19 BRIDGE EXCAVATION
- 20 SUPPORTS AND SPACERS FOR REINFORCING STEEL
- 21 SUMMARY OF QUANTITIES
- 22-26 TEMPORARY PROJECT WATER POLLUTION CONTROL (SOIL EROSION)
- 27 SEEDING
- 28 PAVEMENT MARKING PLAN
- 29 TRAFFIC CONTROL PLAN
- 30 SUMMARY OF TRAFFIC CONTROL DEVICES
- 31 DESIGN DETAILS FOR TRAFFIC CONTROL DEVICES
- 32-33 CROSS SECTIONS



DESIGN DESIGNATIONS

ADT (1994) - 3902
ADT (2014) - 4690
DHV - 10%
T (5%) -
V - 60 km/h
CLEAR ZONE - 2 m

COUNTY LINE	RETAINING WALL
CORPORATE LIMITS	CENTER LINE OF PROJECT
STATE OR NATIONAL LINE	LEVEE
TOWNSHIP LINE	CULVERTS
SECTION LINE	DROP INLETS
GRANT LINE	ACCESS CONTROL
FENCE LINE	POWER LINE
QUARD FENCE	TELEPHONE OR TELEGRAPH LINE
UNFENCED PROPERTY	MARSH
RIGHT OF WAY	HEDGE
TRAVELLED WAY	TREES
RAILROADS	GRADE ELEVATION

GROSS LENGTH OF PROJECT	48.000 m
EXCEPTIONS:	NONE
ADDITIONS:	NONE
NET LENGTH OF PROJECT	48.000 m
NET LENGTH OF BRIDGES	0.000 m
NET LENGTH OF ROADS	48.000 m

NOTE: THIS PROJECT FALLS WITHIN THE PURVIEW OF A NATION WIDE PERMIT AUTHORIZED UNDER FEDERAL REGULATIONS 33 CFR, PART 330, PUBLISHED IN THE NOV. 22, 1991 FEDERAL REGISTER.

KDOT METRIC

All dimensions shown, without a SI suffix, are in millimeters. All elevations shown are in meters.

APPROVED - DATE
Mike Lindbak
MICHAEL E. LINDBAK, P.E., CITY ENGINEER
WICHITA, KANSAS
PROJ. NO.

RECOM. FOR APPROVAL - DATE
CHIEF, BUREAU OF LOCAL PROJECTS
KANSAS DEPARTMENT OF TRANSPORTATION

APPROVED - DATE
STATE TRANSPORTATION ENGINEER
KANSAS DEPARTMENT OF TRANSPORTATION

