

GENERAL NOTES:

- The Contractor shall comply with all applicable safety regulations. All construction shall be completed following current City Standard Specifications and Special Provisions.
- Contractor will be required to provide notice to utility companies a minimum of seventy-two (72) hours prior to any excavation, as follows:
 Kansas One-Call 687-2470
 The Contractor must notify the following in case of an emergency:
 AT&T 1-800-246-8464
 Black Hills Energy 1-800-694-8989
 City of Wichita Water 1-316-268-4555
 City of Wichita Sewer 1-316-268-4073
 City of Wichita Stormwater 1-316-268-4090
 City of Wichita Traffic 1-316-268-4034
 Cox Communications 1-888-249-3530
 Kansas Gas Service 1-888-482-4950
 Westar Energy 1-800-544-4857
- Utility service lines, poles, etc. are to be adjusted as necessary by others prior to construction unless the plans specifically call for their adjustment by the Contractor or unless the plans specifically identify a utility to be adjusted by its owner during construction. Existing utilities and their location, as shown on the plans, represent the best information obtainable for design. The Contractor will be required to work around existing utilities within the right-of-way which do not conflict with proposed construction.
- Rubble from the removal of miscellaneous structures and excess excavation which is to be wasted shall be disposed of on sites to be provided by the Contractor. These sites shall be approved by the Engineer as to suitability, appearance and site location. Locations, in the opinion of the Engineer, that will leave an unsightly appearance will not be approved. All disposal sites must be approved by the Kansas Department of Health and Environment. Material either stockpiled or disposed of in a flood plain would require a Kansas State Board of Agriculture permit. Any material dumped in waters of the United States or wetlands is subject to U.S. Corps of Engineers permitting regulations. Any material buried or stockpiled beyond approved construction limits would require additional archaeological investigations unless buried in a previously approved borrow location.
- Trees and shrubs in public right-of-way which are in direct conflict with proposed new construction shall be removed by the Contractor with the Engineer's approval. Trees and shrubs which are not in direct conflict with proposed new construction shall be saved and protected from damage.
- The Contractor shall give all property owners and/or tenants of developed property abutting the construction of this project a minimum of ten (10) days notice prior to start of construction.
- The Contractor shall be responsible for preserving property irons. The Contractor will be required to re-establish any property irons which are damaged or destroyed by his construction operations. Such irons shall be re-established by a licensed land surveyor in accordance with state laws.
- The Water Distribution Division shall field locate water valve one time during construction when requested by the Contractor. It shall be the Contractor's responsibility to preserve such field locations during the construction process. Water valves, valve boxes or fire hydrants damaged during construction shall be repaired by Contractor at his own expense. Valve boxes and water meters within the project limits shall be adjusted to match field grades.
- The Contractor shall notify the consultant engineer and Tom Mason with the City at 316-268-4574 with the anticipated construction start date and notify them of project completion. Staking and inspection for this project will be the responsibility of the Contractor.
- If traffic is impacted by construction, a traffic control plan must be submitted and approved by the City Traffic Engineer, Brian Coon at traffic@wichita.gov before construction can begin. The Contractor shall be responsible for all traffic control measures to facilitate construction. All construction zone markings and signage shall conform to the latest version of Manual on Uniform Traffic Control Devices (MUTCD) as published by the US Dept. of Transportation, Federal Highway Administration. All costs associated with construction markings and signage shall be the Contractors responsibility.
- All elevations shown are Datum NAVD 88.
- All areas disturbed during construction that will not be under proposed pavement shall be restored to match existing conditions.

- All stubs and plugged pipes shall be located with green plastic tape in the same manner as risers.
- Connecting to Existing Manholes: Prior to laying sewer lines using existing stubs in existing manholes, the Contractor shall expose and verify the elevation, grade and alignment of existing stubs and notify the Engineer of any deviation from the plans. Where connection to an existing manhole that does not have an existing stub or the stub is unusable due to elevation grade or alignment, the Contractor shall bore cut into existing manhole wall to make connection using approved water stop gasket, and reshape the existing manhole invert to provide smooth flow. The cost to connect to existing manholes is incidental to the project.
- Contractor shall limit the extend of trench open overnight and weekends to less than 50 feet.
- Contractor shall provide positive drainage away from all manhole covers.
- The Contractor shall prevent any construction debris from entering the existing sanitary sewer during construction.
- The Contractor shall be responsible for maintaining continuous flow of sewage through construction. Contractors proposed method for maintaining sewage flow shall be submitted and approved by the Sewer Maintenance Division (316-268-4073) prior to starting and by-passing of sewage flows.
- Any over excavation from manhole and pipe removal shall be backfilled with AB-3 compacted to 90-95% ASTM D698.
- City Maintenance of sanitary sewer mains ends at last structure within easement or right-of-way line.
- Any sidewalk, drive approach, curb, or street pavement removed to construct project must have a pavement cut permit and be replaced by the City contractor. Permits can be obtained by calling 316-268-4501 or 316-268-4480.
- All existing and proposed erosion control measures including silt fencing, erosion control mat, straw bales, inlet barriers, and const. entrance shall be maintained throughout construction by the contractor and until project is accepted by the City of Wichita. The on-site engineer shall complete weekly reports on the status of erosion control measures. The contractor shall be required to comply with maintenance and/or replacement of erosion control measures as determined by the on-site engineer until project is accepted by City of Wichita. Maintenance and/or replacement of erosion control measures to be paid by L.S. bid item "Site Restoration".
- All excess excavation shall remain on-site and shall be stockpiled or spread at a location determined by the engineer.
- The Contractor shall not begin work on the project until the Project Inspector is assigned and on site. Any work completed without inspection will be required to be uncovered for inspection at the Contractor's expense.

Benchmarks

BM #1: CITY OF WICHITA BENCHMARK DISC ON TOP OF HUBGUARD AT SW. COR. OF BRIDGE, 165.4' W. & 12.8' S. OF THE SE COR., SW1/4, SEC. 15, TWP. 27-S, R-1-W. ELEV. = 1324.40 NAVD88

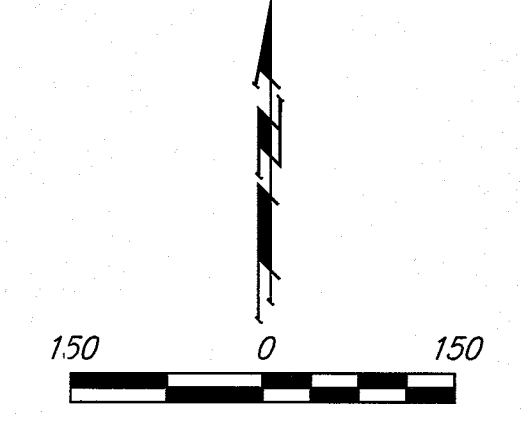
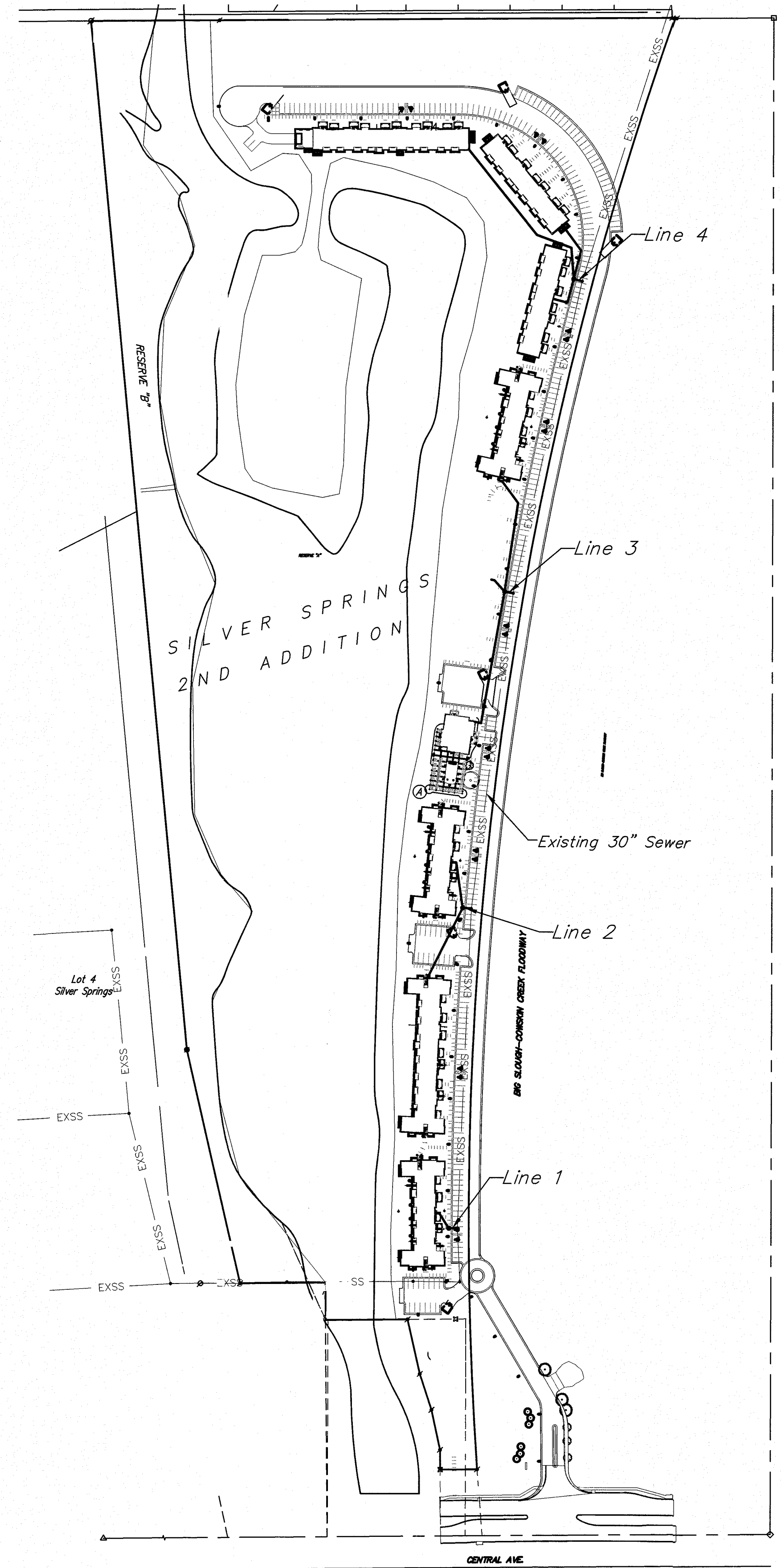
BM #2: 60d STEP BENCH IN EAST FACE OF POWER POLE, 3.9' N. & 1.6' W. OF DEFLECTION COR., W. LINE, RESERVE "B", SILVER SPRINGS 2ND ADDITION. ELEV. = 1311.26 NAVD88

T. Mason - City of Wichita, Inspector
 Stubs
 Release Date: 12/2/2016
 apr 12/5/2016

AS BUILT PLANS
 Contractor: Mies
 Inspector: David Vansickle, Baughman Co.
 pdf's by: KEK, 12/01/2016

SANITARY SEWER IMPROVEMENTS to serve **SILVER SPRINGS 2ND ADD.**

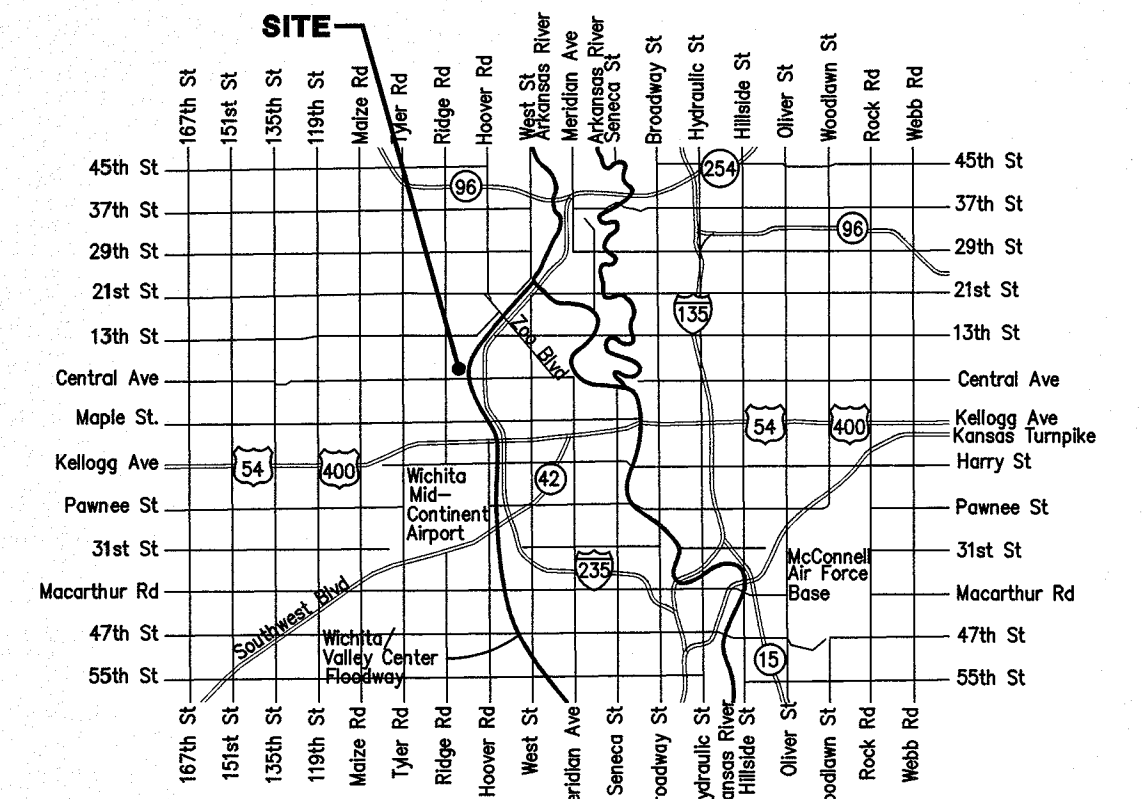
6500 W. CENTRAL AVE.
 CITY OF WICHITA, KANSAS
 Gary Janzen, P.E. City Engineer
 Project Number
 2277 PPS (607861)



Sheet Index

| | |
|----------------------|---|
| Title Sheet | 1 |
| Lines 1 & 2 | 2 |
| Lines 3 & 4 | 3 |
| Erosion Control Plan | 4 |
| Copy of Plat | 5 |

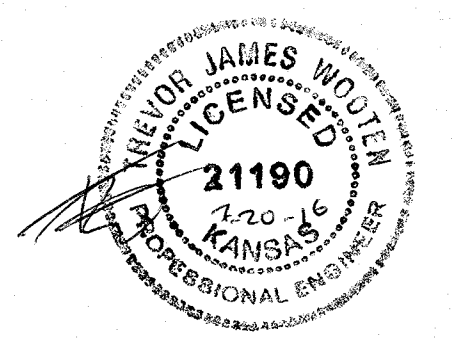
SS Details SS-101, SS-102, SS-103, SS-104 and Erosion Control Details available at City of Wichita web site at <http://www.wichita.gov/Government/Departments/PWU/Pages/Regulations.aspx>



Vicinity Map

APPROVED AS NOTED
 BY WICHITA PUBLIC WORKS
 ENGINEERING DIVISION
 Engineering *[Signature]* 7/21/16
 Utilities *[Signature]* 7-22-16

NOTE TO CONTRACTORS
 Inspection and testing for this project is to be provided by a Licensed Consulting Engineering Firm under contract with the Owner/Developer. Said inspection to be in accordance with the City of Wichita standard construction engineering practices and certified by a Licensed Professional Engineer in the state of Kansas. No work shall be performed by the Contractor without such inspection nor shall any work be commenced without written authorization by City Engineering. All Construction and Materials shall comply with the current City of Wichita Specifications and Standards and Special Provisions (on file and available at Wichita.gov).
 An approved copy of these plans signed by City staff are required on-site.



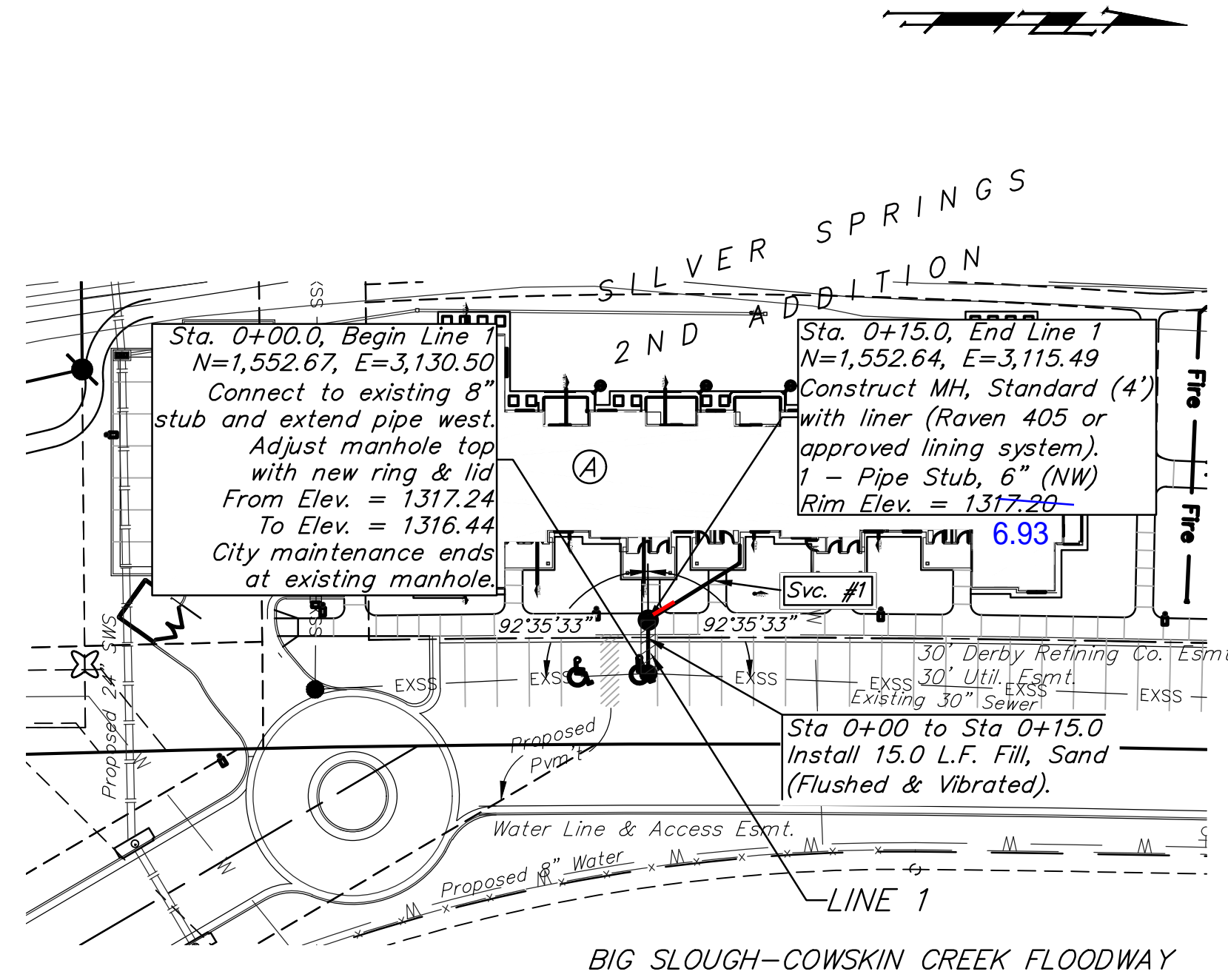
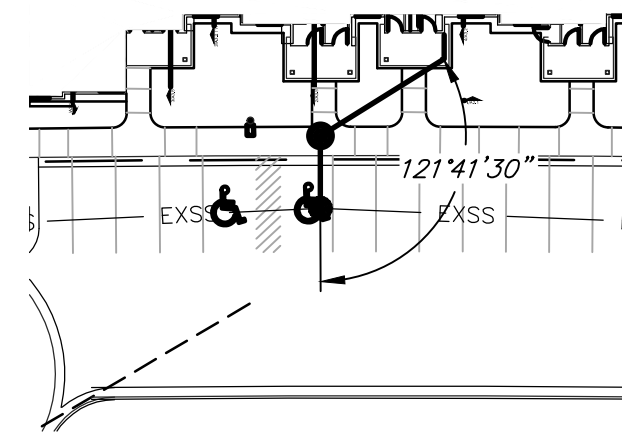
July 2016

Baughman
 Baughman Company, P.A. 315 Ellis St. Wichita, KS 67211 P 316-262-7271 F 316-262-0144
 ENGINEERING | SURVEYING | PLANNING | LANDSCAPE ARCHITECTURE

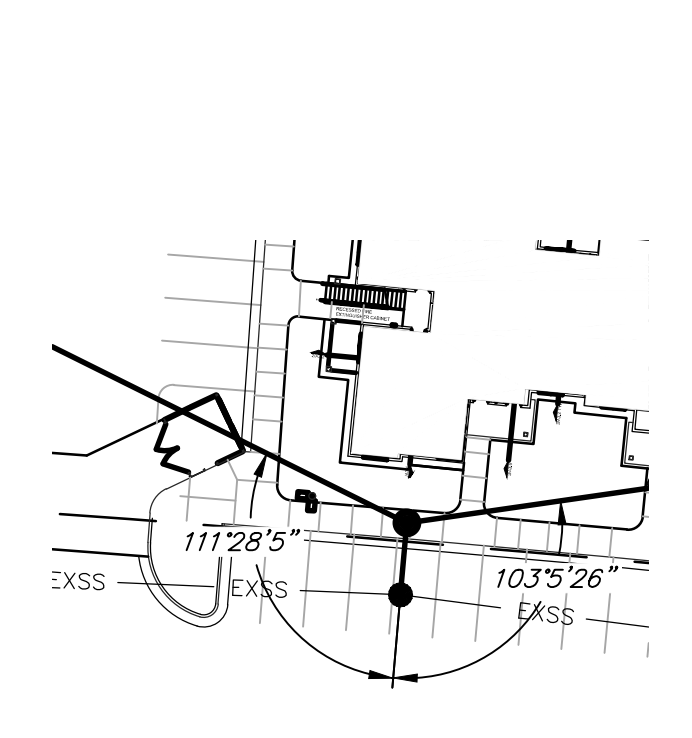
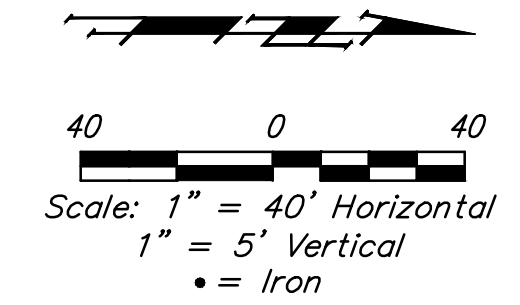
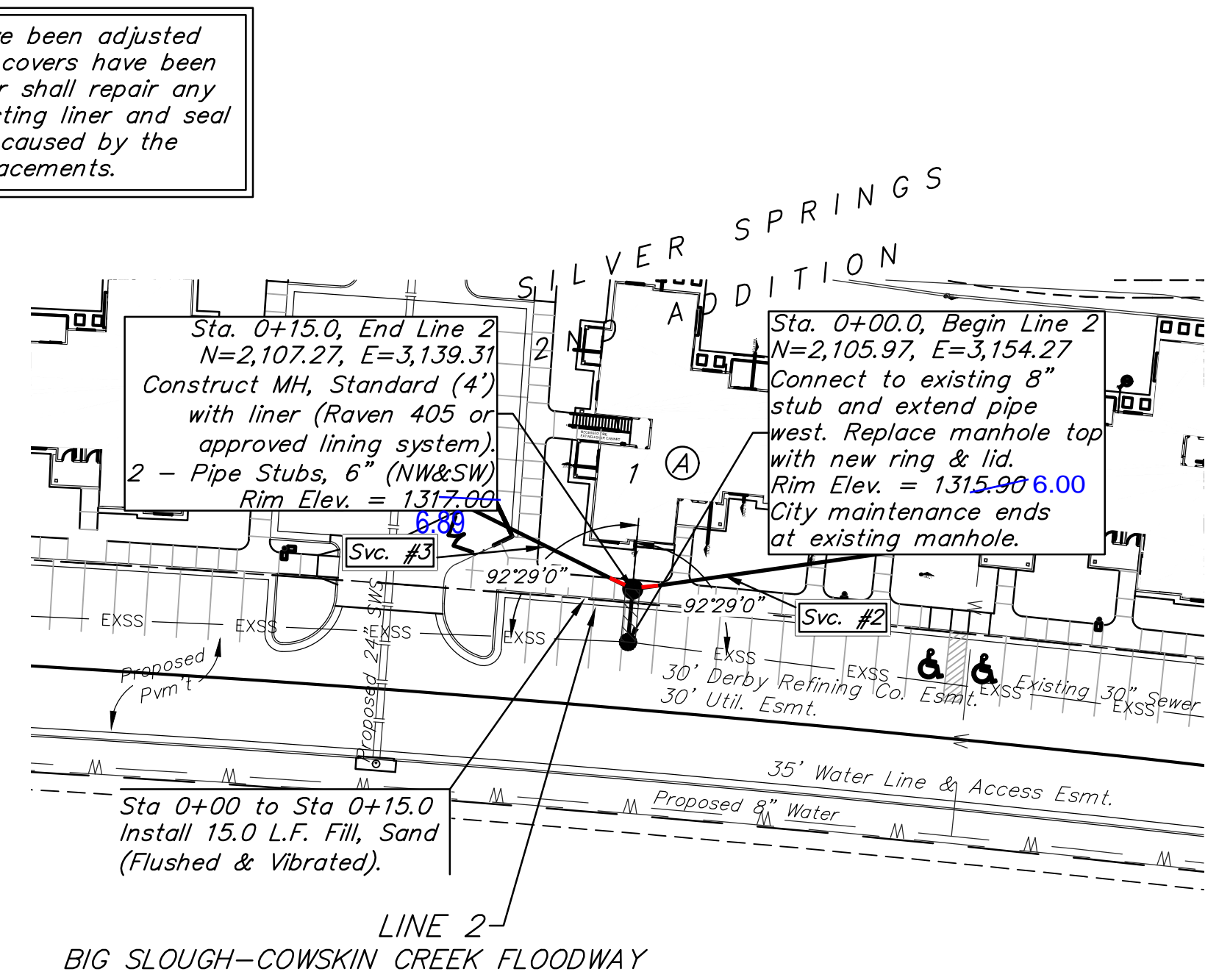
Ev:\Projects\Silver Springs 2nd_15-01-PO88\Engineering\Phase 1\SS_15-1-E337\PPS.dwg

BENCHMARKS:
 BM #1: CITY OF WICHITA BENCHMARK DISC ON TOP OF HUBGUARD AT SW COR. OF BRIDGE, 165.4' W. & 12.8' S. OF THE SE COR., SW1/4, SEC. 15, TWP. 27-S, R-1-W.
 ELEV. = 1324.40 NAVD88

BM #2: 60d STEP BENCH IN EAST FACE OF POWER POLE, 3.9' N. & 1.6' W. OF DEFLECTION COR., W. LINE, RESERVE "B", SILVER SPRINGS 2ND ADDITION.
 ELEV. = 1311.26 NAVD88



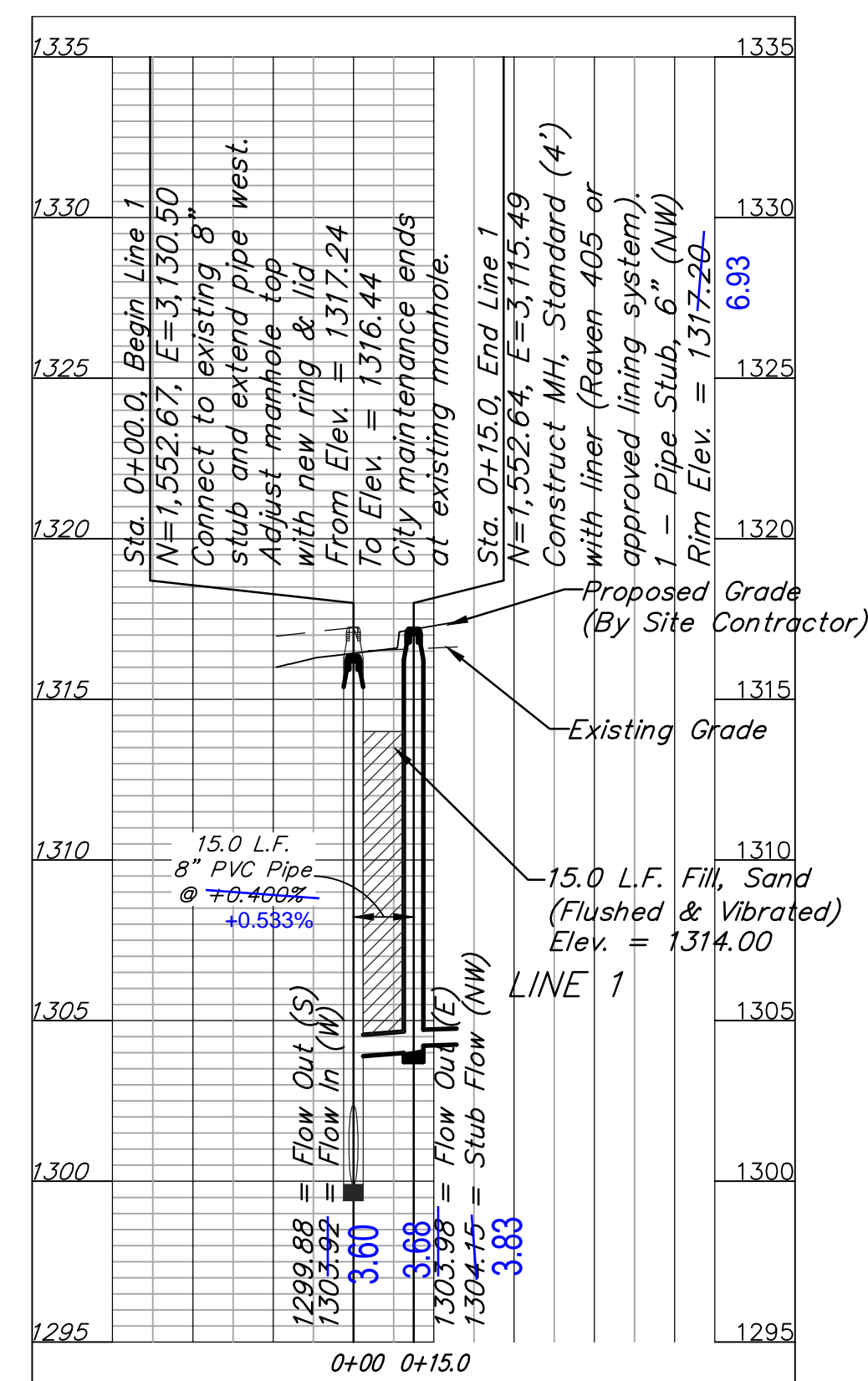
After manholes have been adjusted and frames & covers have been replaced, Contractor shall repair any damage to the existing liner and seal any exposed areas caused by the frame & cover replacements.



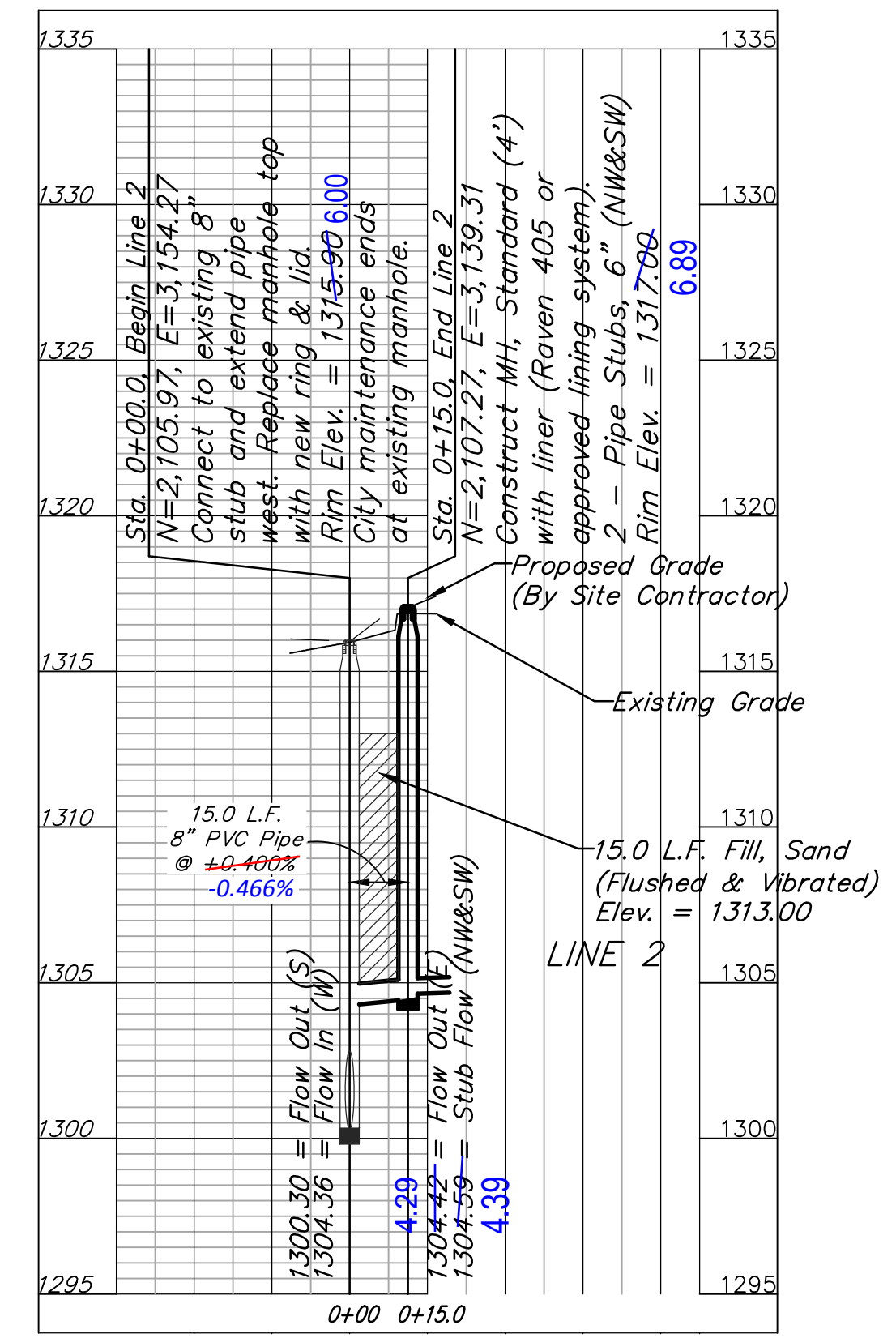
SEWER SERVICE TABLE

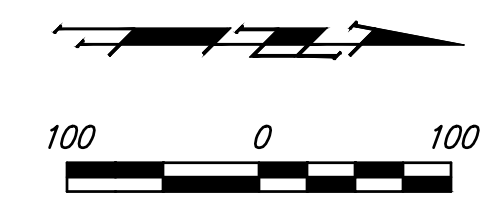
| NUMBER | TYPE | LOCATION | | | STATION | FOR INFORMATION ONLY | |
|--------|---------|----------|-----------|----------|---------|----------------------|----------------------------|
| | | LOT NO. | BLOCK NO. | LINE NO. | | DIRECTION | APPROXIMATE LENGTH 6" PIPE |
| 1 | 6" Stub | 1 | A | 1 | 0+15.0 | - | 5' |
| 2 | 6" Stub | 1 | A | 2 | 0+15.0 | - | 5' |
| 3 | 6" Stub | 1 | A | 2 | 0+15.0 | - | 5' |

NOTE: Vertical Riser Pipe shall be extended to 2' minimum above ground water elevation and 4' maximum below proposed ground elevation.



Contractor shall verify depth and location of existing manhole prior to construction and notify Engineer of any discrepancy.





EROSION CONTROL PLAN LEGEND
(Installation Details Found in the SWP2 Plan)

- DROP INLET PROTECTION
- CURB INLET PROTECTION
- DITCH CHECKS
- SILT FENCING
- EROSION CONTROL BERM
- BACK OF CURB PROTECTION
- EROSION CONTROL MAT
- TEMPORARY DITCH

NO SCALE

| EROSION CONTROL MEASURE | INSTALL | MAINTAIN | REMOVE |
|------------------------------|---------|----------|--------|
| BACK OF CURB PROTECTION (LF) | 0 | 0 | 0 |
| CONSTRUCTION ENTRANCE (EA) | 1 | 0 | 0 |
| CURB INLET BARRIER (EA) | 0 | 0 | 0 |
| DITCH CHECK (EA) | 0 | 0 | 0 |
| DROP INLET PROTECTION (EA) | 0 | 0 | 0 |
| EROSION CONTROL (LS) | 0 | 0 | 0 |
| EROSION CONTROL BERM (LF) | 0 | 0 | 0 |
| SILT FENCE (LF) | 2,982 | 0 | 0 |
| EROSION CONTROL MAT (SY) | 0 | 0 | 0 |

QUANTITIES ARE FOR INFORMATION ONLY! CONTRACTOR SHALL VERIFY QUANTITIES PER FINAL BID QUANTITY SHEET.

* ALL EXISTING BMPs INCLUDING CONSTRUCTION ENTRANCE, SEDIMENT BARRIERS, SILT FENCE, EROSION CONTROL BERM, AND EROSION CONTROL MAT SHALL BE MAINTAINED AND REPAIRED IF NECESSARY. REPLACEMENT OR REMOVAL OF EROSION CONTROL MEASURES TO BE PAID FOR BY L.S. BID ITEM "MAINTAIN EXISTING EROSION CONTROL BMPs"

