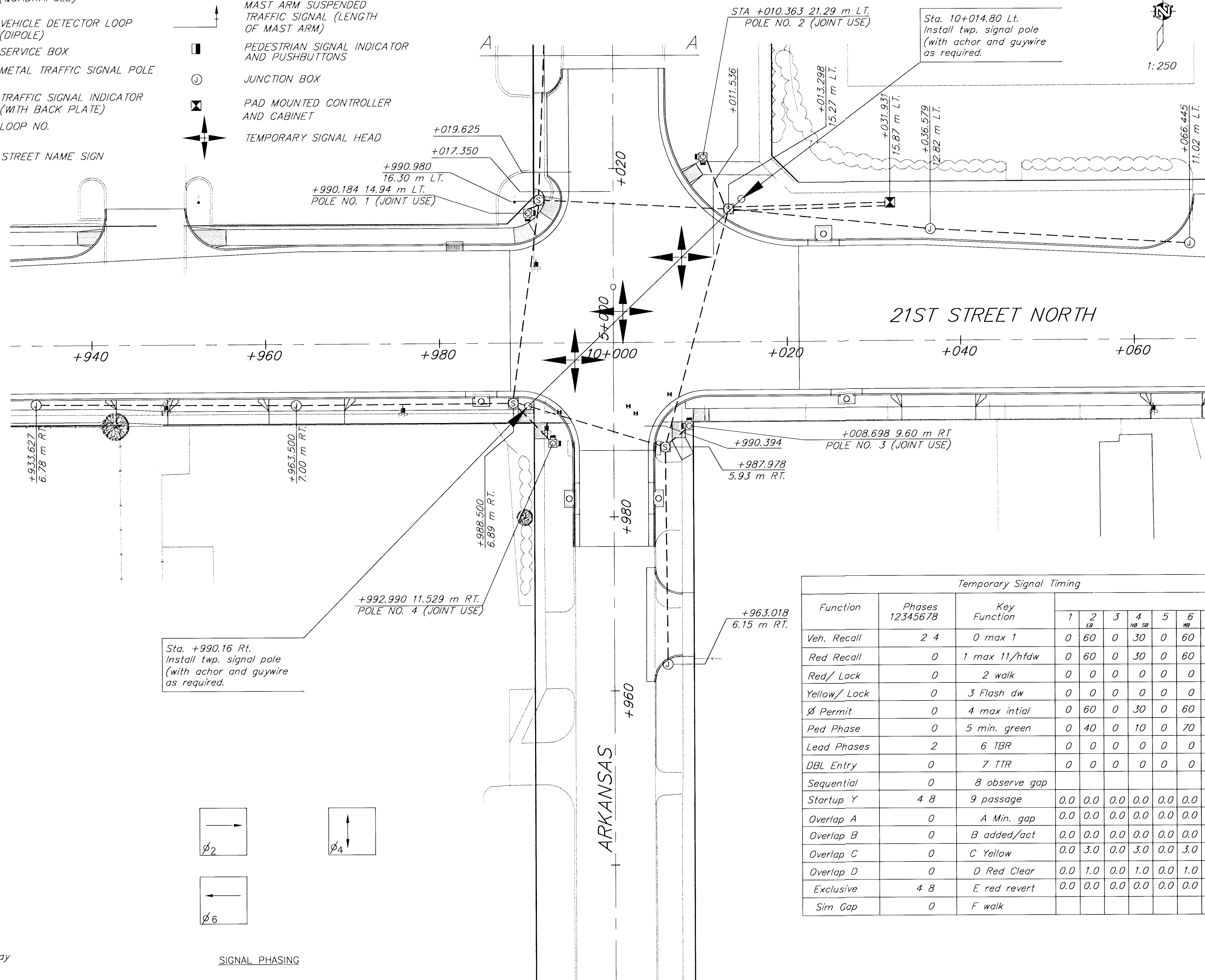
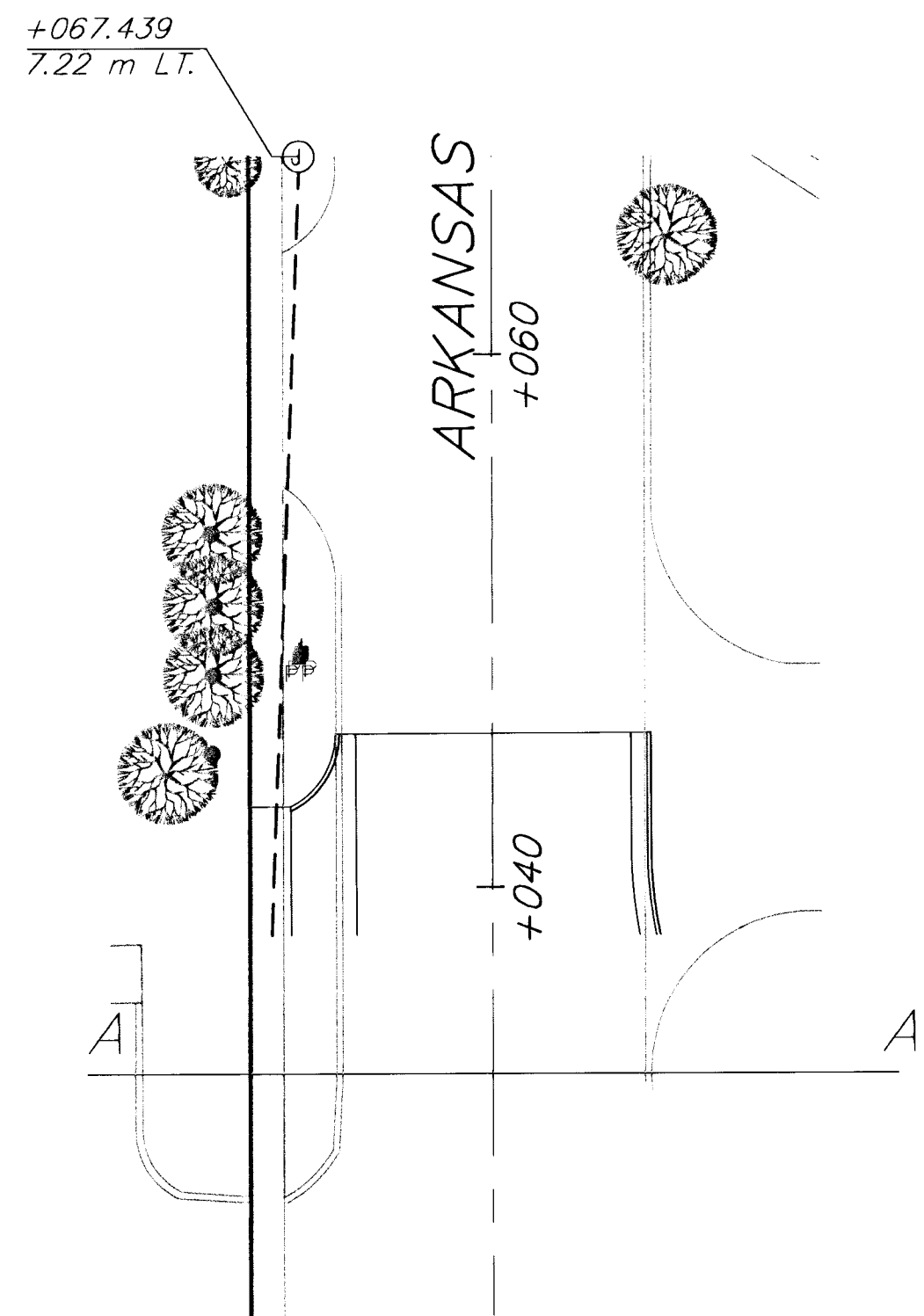
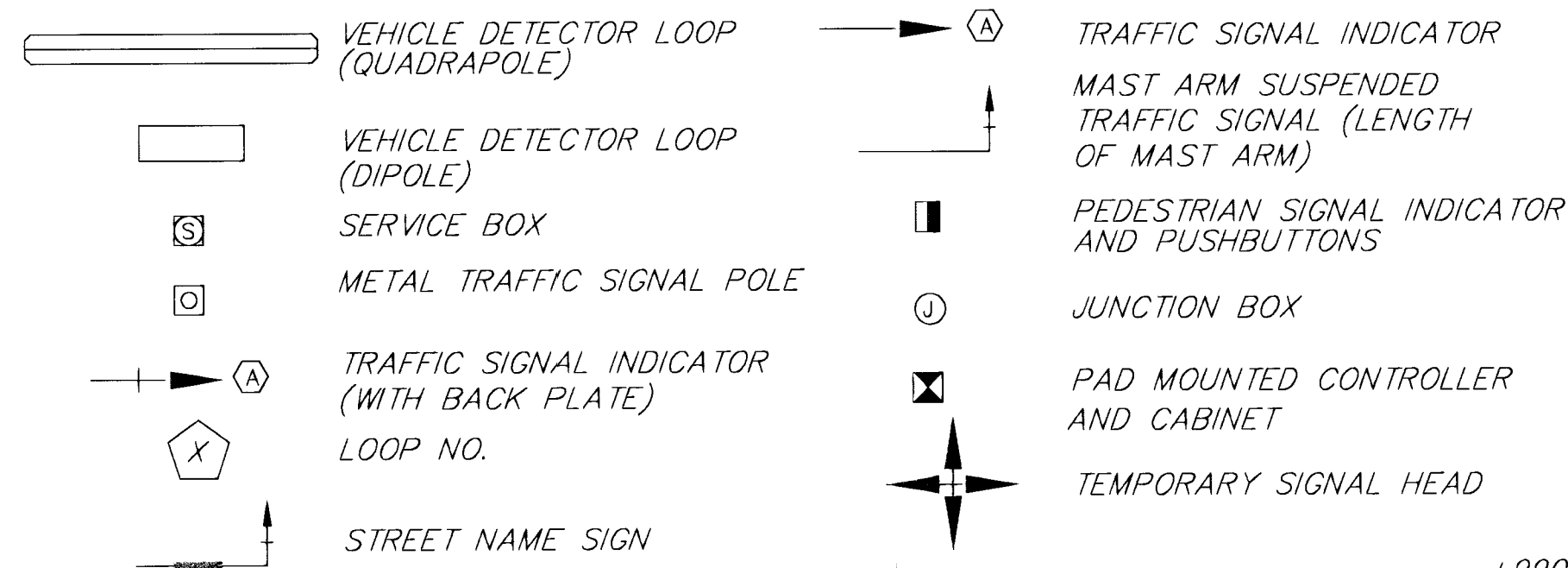


FHWA REG. NO.	STATE	PROJECT NO.	YEAR	SHEET NUMBER	TOTAL SHEETS
7	KANSAS	87 N-0194-01	2001	33	43

**LEGEND:**



- Temporary Signal General Notes:**
- All wiring installed shall conform to the National Electric Code and local ordinances and requirements.
  - All signal cable and feeder runs to be carried overhead on span wire across roadways or in conduit under roadways.
  - The operation and maintenance shall be responsibility of the contractor.
  - All signal indications, clearances, and sequences shall be in ordinance with current MUTCD.
  - The span wire signal heads shall be centered over exit lanes according to construction phase.
  - The temporary traffic signal shall be switched on during off-peak hours. When switching signals, flaggers will be required. See this sheet for Temporary Signal Timing.
  - The terminal blocks shall be in a weatherproof enclosure.
  - All necessary signal head, controller and pole reallocations, whether specifically mentioned or not, shall be Contractor's responsibility.
  - Traffic signal heads which are in place and not in use during a specific step shall be removed, or covered with an opaque material.
  - Signal phasing and timing shall be set as directed and approved by Engineer.
  - Signal controller shall be capable of a standard eight phase operation, with green interval settable from 0 to 255 seconds.
  - The traffic signal controller must be capable of storing a minimum of three separate phasing/timing plans, which can be selected on a time-of-day basis.
  - In case of signal malfunction, the contractor must respond within one hour.

Function	Phases 12345678	Key Function	Timing (seconds)										
			1	2	3	4	5	6	7	8			
Veh. Recall	2 4	0 max 1	0	60	0	30	0	60	0	0	0	0	0
Red Recall	0	1 max 11/hfdw	0	60	0	30	0	60	0	0	0	0	0
Red/Lock	0	2 walk	0	0	0	0	0	0	0	0	0	0	0
Yellow/Lock	0	3 Flash dw	0	0	0	0	0	0	0	0	0	0	0
Ø Permit	0	4 max intial	0	60	0	30	0	60	0	0	0	0	0
Ped Phase	0	5 min. green	0	40	0	10	0	70	0	0	0	0	0
Lead Phases	2	6 TBR	0	0	0	0	0	0	0	0	0	0	0
DBL Entry	0	7 TTR	0	0	0	0	0	0	0	0	0	0	0
Sequential	0	8 observe gap											
Startup Y	4 8	9 passage	0.0	0.0	0.0	0.0	0.0	0.0	0.0	0.0	0.0	0.0	0.0
Overlap A	0	A Min. gap	0.0	0.0	0.0	0.0	0.0	0.0	0.0	0.0	0.0	0.0	0.0
Overlap B	0	B added/act	0.0	0.0	0.0	0.0	0.0	0.0	0.0	0.0	0.0	0.0	0.0
Overlap C	0	C Yellow	0.0	3.0	0.0	3.0	0.0	3.0	0.0	0.0	0.0	0.0	0.0
Overlap D	0	D Red Clear	0.0	1.0	0.0	1.0	0.0	1.0	0.0	0.0	0.0	0.0	0.0
Exclusive	4 8	E red revert	0.0	0.0	0.0	0.0	0.0	0.0	0.0	0.0	0.0	0.0	0.0
Sim Gap	0	F walk											

	PROJECT NUMBER <b>472-82783</b>	AM NO. 99147	<b>21ST AND ARKANSAS</b> <b>TEMPORARY SIGNALIZATION</b> CITY OF WICHITA		SHEET 33
	DESIGN RR	DRAWN RR	FILE Tempsig	DATE 11/10/00	SCALE 1:250