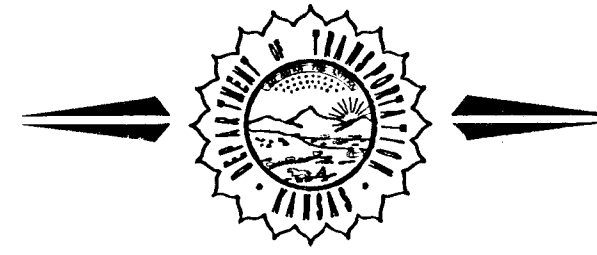


STATE OF KANSAS
DEPARTMENT OF TRANSPORTATION

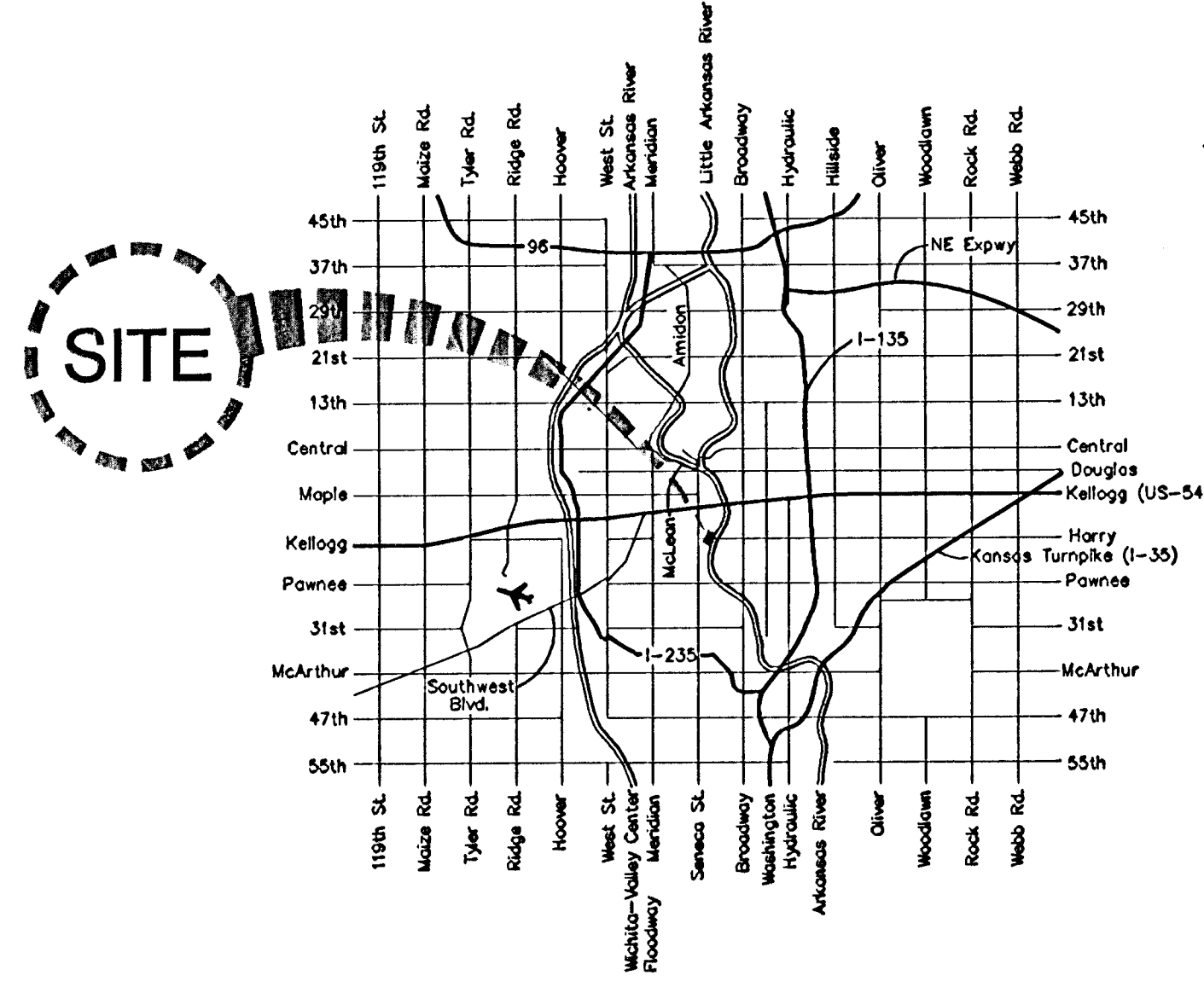


CONSTRUCTION PLANS FOR PROPOSED
HARRY AND McLEAN INTERSECTION
FEDERAL AID URBAN SYSTEM PROJECT

FOR
**THE CITY OF WICHITA,
SEDGWICK COUNTY, KANSAS**

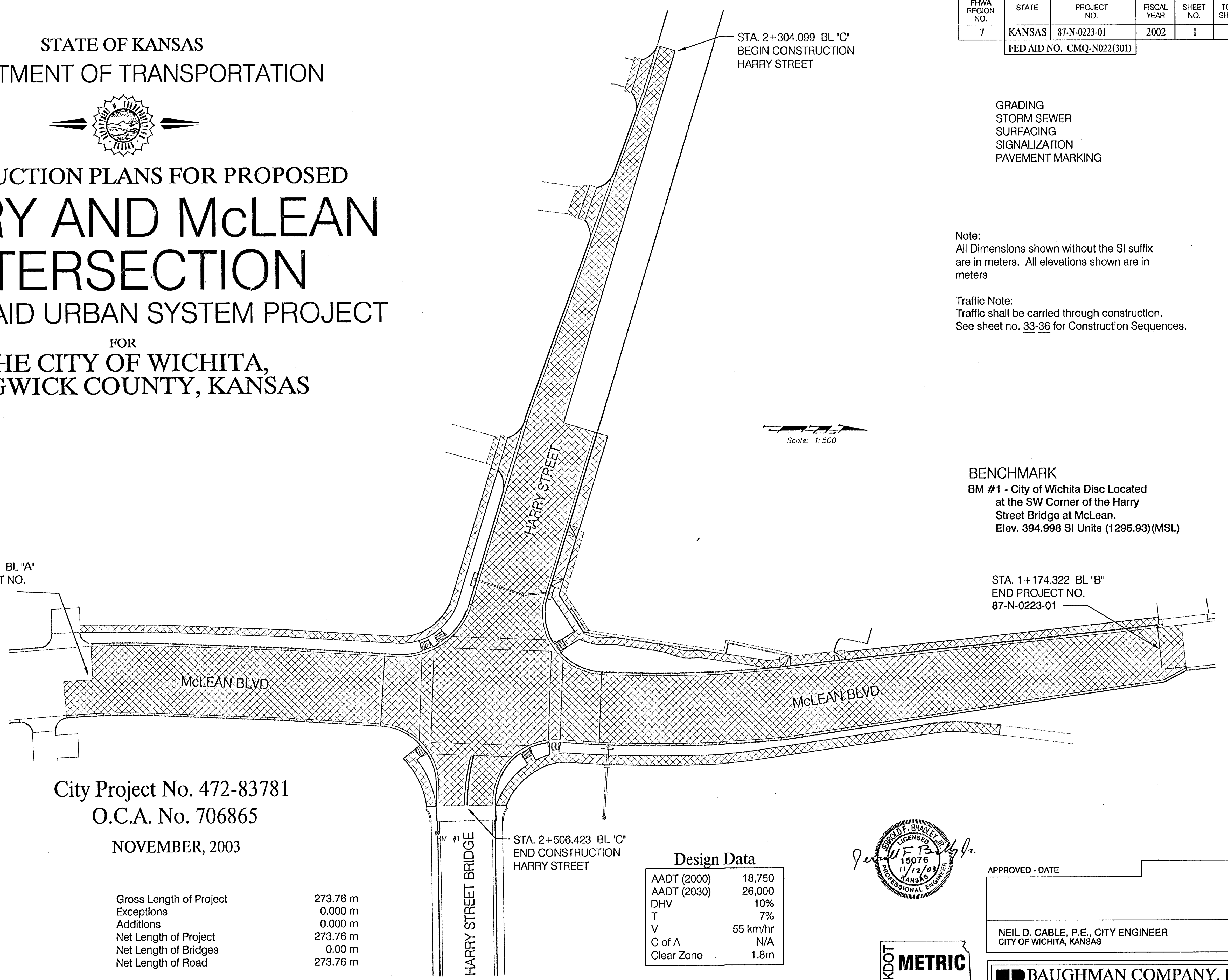
Index

Title Sheet	1
Key Sheet	2
General Notes	3
Typical Pavement Sections	4-6
Pavement Details	7-8
Entrance Details	9
Retaining Wall Details	10
Paving Plans	11-14
Intersection Joint Details	15
Harry Street Joint Details	16-17
Storm Water Plan/Profile	18
Storm Sewer Details	19-21
Summary of Quantity Sheet	22-23
Traffic Signal Plan	24
Wiring Plan	25
Traffic Signal Details	26-28
Traffic Marking & Signing Plan	29-31
Marking & Sign Details	32
Traffic Control Plan	33-36
Traffic Control Details	37-40
Erosion Control Details	41-44
Earthwork Cross Sections	45-55
Earthwork Quantities	56



Vicinity Map

STA. 0+395.220 BL "A"
BEGIN PROJECT NO.
87-N-0223-01



STA. 2+304.099 BL "C"
BEGIN CONSTRUCTION
HARRY STREET

Scale: 1:500

FHWA REGION NO.	STATE	PROJECT NO.	FISCAL YEAR	SHEET NO.	TOTAL SHEETS
7	KANSAS	87-N-0223-01	2002	1	56
FED AID NO. CMQ-N022(301)					

- GRADING
- STORM SEWER
- SURFACING
- SIGNALIZATION
- PAVEMENT MARKING

Note:
All Dimensions shown without the SI suffix
are in meters. All elevations shown are in
meters

Traffic Note:
Traffic shall be carried through construction.
See sheet no. 33-36 for Construction Sequences.

BENCHMARK
BM #1 - City of Wichita Disc Located
at the SW Corner of the Harry
Street Bridge at McLean.
Elev. 394.998 SI Units (1295.93)(MSL)

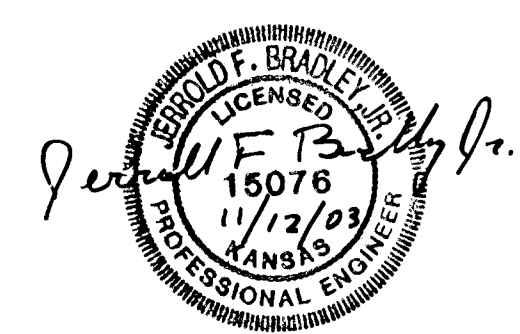
STA. 1+174.322 BL "B"
END PROJECT NO.
87-N-0223-01

City Project No. 472-83781
O.C.A. No. 706865
NOVEMBER, 2003

Gross Length of Project	273.76 m
Exceptions	0.000 m
Additions	0.000 m
Net Length of Project	273.76 m
Net Length of Bridges	0.00 m
Net Length of Road	273.76 m

Design Data

AADT (2000)	18,750
AADT (2030)	26,000
DHV	10%
T	7%
V	55 km/hr
C of A	N/A
Clear Zone	1.8m



APPROVED - DATE

NEIL D. CABLE, P.E., CITY ENGINEER
CITY OF WICHITA, KANSAS



BAUGHMAN COMPANY, P.A.
ENGINEERING, SURVEYING, & PLANNING
316-262-7271 • 315 ELLIS • WICHITA, KANSAS 67211