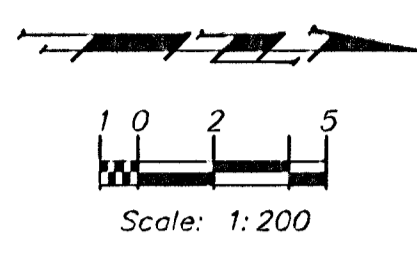


| FHWA REGION NO. | STATE  | PROJECT NO.  | FISCAL YEAR | SHEET NO. | TOTAL SHEETS |
|-----------------|--------|--------------|-------------|-----------|--------------|
| 7               | KANSAS | 87-N-0223-01 | 2002        | 11        | 56           |

**BENCHMARK**  
 BM #1 - City of Wichita Disc Located at the SW Corner of the Harry Street Bridge at McLean. Elev. 394.998 SI Units (1295.93)



Begin 1.8m Conc. Sidewalk (100mm) Match Existing Driveway  
 Sta. 0+395.220 Begin Project 87 N-0223-01

Saw & Replace Existing Pavement & Curb & Gutter w/ 180mm A.C. Pavement (200mm Crushed Stone Subgrade) Match Ex. Grades @ Saw Joint.

\* NOTE: This Property has underground sprinkler system in public right-of-way which conflicts with new construction. All work associated with sprinkler system removal, replacement, and/or repair shall be **SUBSIDIARY** to the L.S. bid item "Sprinkler System Adjustments" (Non-Participating)

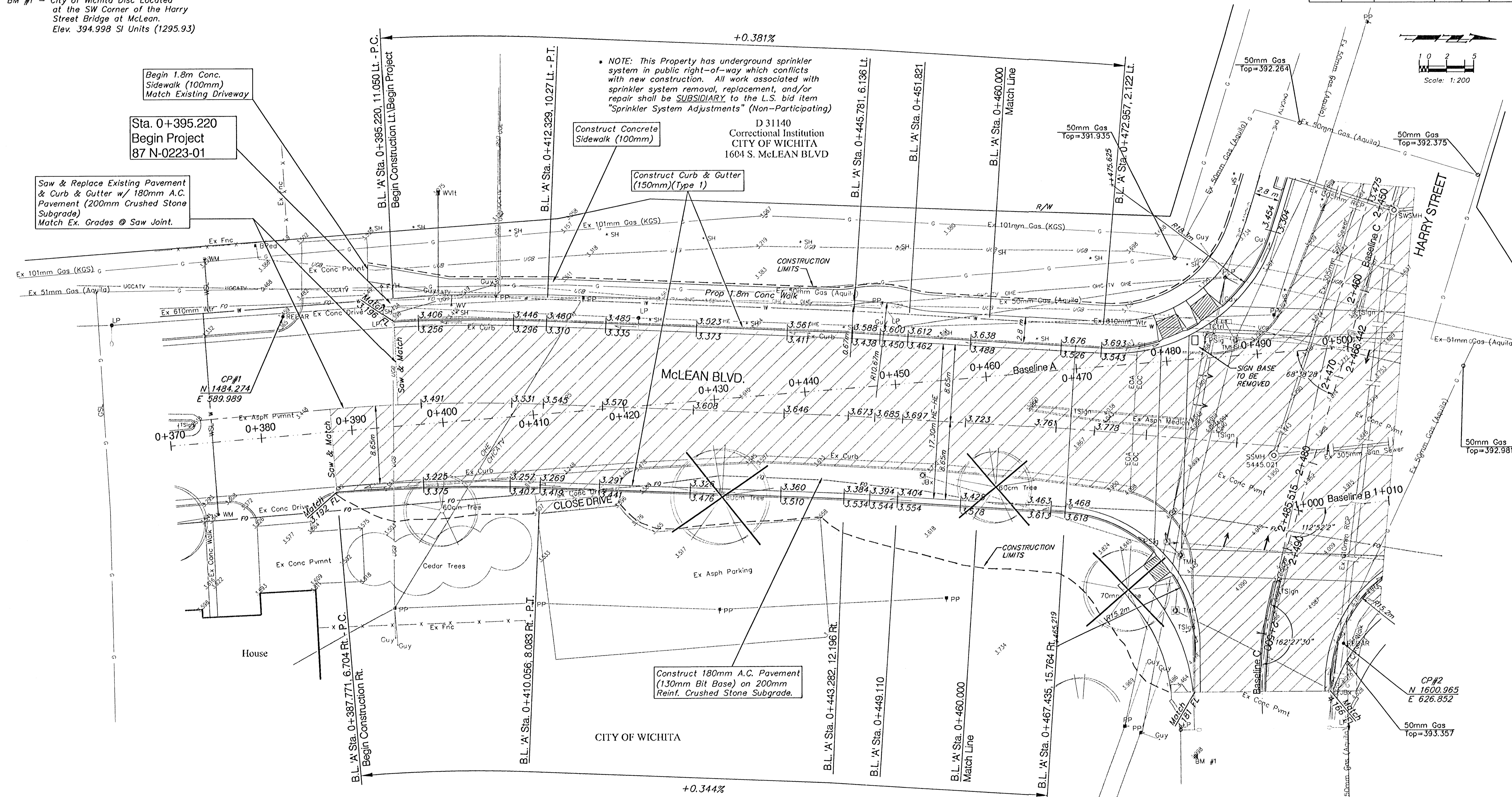
D 31140  
 Correctional Institution  
 CITY OF WICHITA  
 1604 S. McLEAN BLVD

Construct Concrete Sidewalk (100mm)

Construct Curb & Gutter (150mm)(Type 1)

McLEAN BLVD.  
 0+430

Construct 180mm A.C. Pavement (130mm Bit Base) on 200mm Reinf. Crushed Stone Subgrade.



NOTE:  
 Pavement, Sidewalks and Etc. To Be Removed Are Indicated By:

NOTE:  
 Trees / Shrubs to be removed are marked thus:

NOTE:  
 Gas Meters, Utility poles, and Electrical junction pedestals, boxes, etc. are to be REMOVED and RELOCATED as necessary by the Respective Utility Company/Owner PRIOR TO CONSTRUCTION of this Project.

|                             |                     |   |
|-----------------------------|---------------------|---|
| PROJECT NUMBER<br>472-83781 | SHEET NAME<br>Pav01 | ENGINEERING DIRECTORY<br>F:\HarryMcLean\Pav |
| DESIGN<br>JFB               | APPROVED<br>KWR     | DATE<br>Aug 2003                            |
|                             |                     | SCALE<br>1:200                              |
|                             |                     | BAUGHMAN NO<br>01-03-E943                   |

CAPITAL IMPROVEMENT PROJECT  
**MCLEAN BOULEVARD PAVING**  
 B.L. "A" Sta. 0+387.771 to B.L. "A" Sta. 0+460.000  
 HARRY & McLEAN INTERSECTION IMPROVEMENTS

**BAUGHMAN COMPANY, P.A.**  
 ENGINEERING, SURVEYING, & PLANNING  
 316-262-7271 • 315 ELLIS • WICHITA, KANSAS 67211

SHEET  
 OF  
 11  
 56

