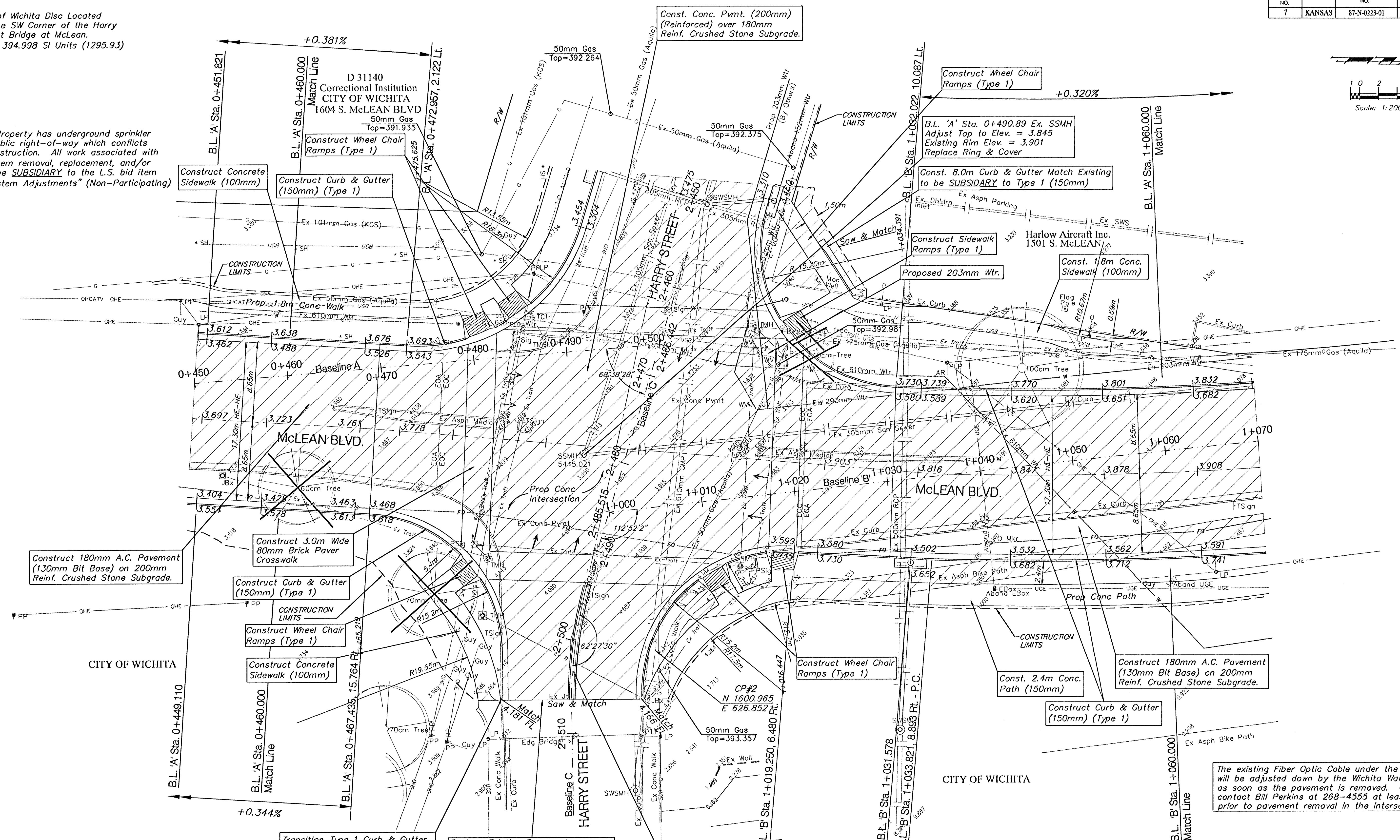
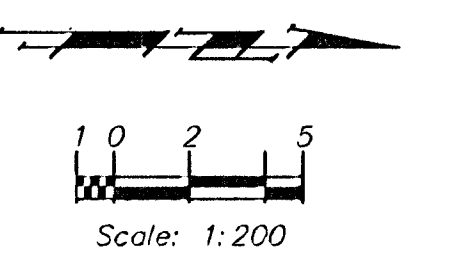


FHWA REGION NO.	STATE	PROJECT NO.	FISCAL YEAR	SHEET NO.	TOTAL SHEETS
7	KANSAS	87-N-0223-01	2002	12	56

**BENCHMARK**  
 BM #1 - City of Wichita Disc Located at the SW Corner of the Harry Street Bridge at McLean. Elev. 394.998 SI Units (1295.93)

NOTE: This Property has underground sprinkler system in public right-of-way which conflicts with new construction. All work associated with sprinkler system removal, replacement, and/or repair shall be *SUBSIDIARY* to the L.S. bid item "Sprinkler System Adjustments" (Non-Participating)



Construct 180mm A.C. Pavement (130mm Bit Base) on 200mm Reinf. Crushed Stone Subgrade.

Construct 3.0m Wide 80mm Brick Paver Crosswalk

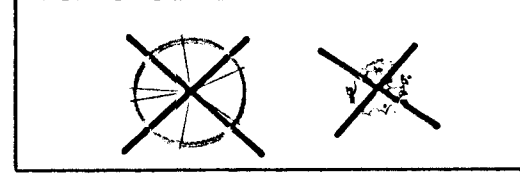
Construct Curb & Gutter (150mm) (Type 1)

Construct Wheel Chair Ramps (Type 1)

Construct Concrete Sidewalk (100mm)

Transition Type 1 Curb & Gutter to Match Existing Monolithic Curb in 3.0m (Both sides)

NOTE: Trees / Shrubs to be removed are marked thus:

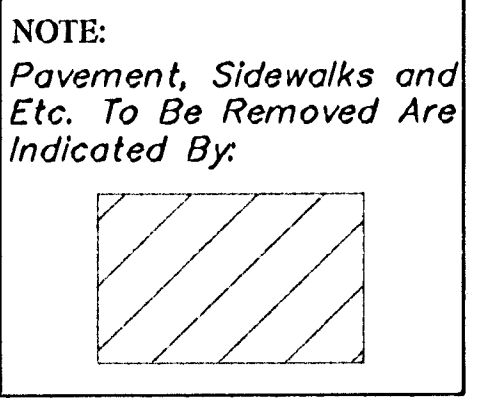


Replace Existing Pavement, Curb & Gutter & Expansion Joint w/ 200mm Conc Pavement (180mm Crushed Stone Subgrade) Install Neoprene Expansion Device See Detail Sheet 7 Match Ex Grades @ Expansion Joint

Construct 460mm Wide 80mm Brick Paver Median Section. See Detail Sheet 7.

The existing Fiber Optic Cable under the intersection will be adjusted down by the Wichita Water Department as soon as the pavement is removed. Contractor to contact Bill Perkins at 268-4555 at least 48 hours prior to pavement removal in the intersection.

NOTE: Gas Meters, Utility poles, and Electrical junction pedestals, boxes, etc. are to be REMOVED and RELOCATED as necessary by the Respective Utility Company Owner PRIOR TO CONSTRUCTION of this Project.



PROJECT NUMBER 472-83781		SHEET NAME Pav02		ENGINEERING DIRECTORY F:\HarryMcLean\Pav		CAPITAL IMPROVEMENT PROJECT MCLEAN BOULEVARD PAVING B.L. "A" Sta. 0+460.000 to B.L. "B" Sta. 1+060.000 HARRY & MCLEAN INTERSECTION IMPROVEMENTS		BAUGHMAN COMPANY, P.A. ENGINEERING, SURVEYING, & PLANNING 319-282-7271 • 315 ELLIS • WICHITA, KANSAS 67211		SHEET 12 OF 56	
DESIGN JFB	DRAWN KWR	APPROVED JFB	DATE Oct 03	SCALE 1:200	BAUGHMAN NO 01-03-E943						