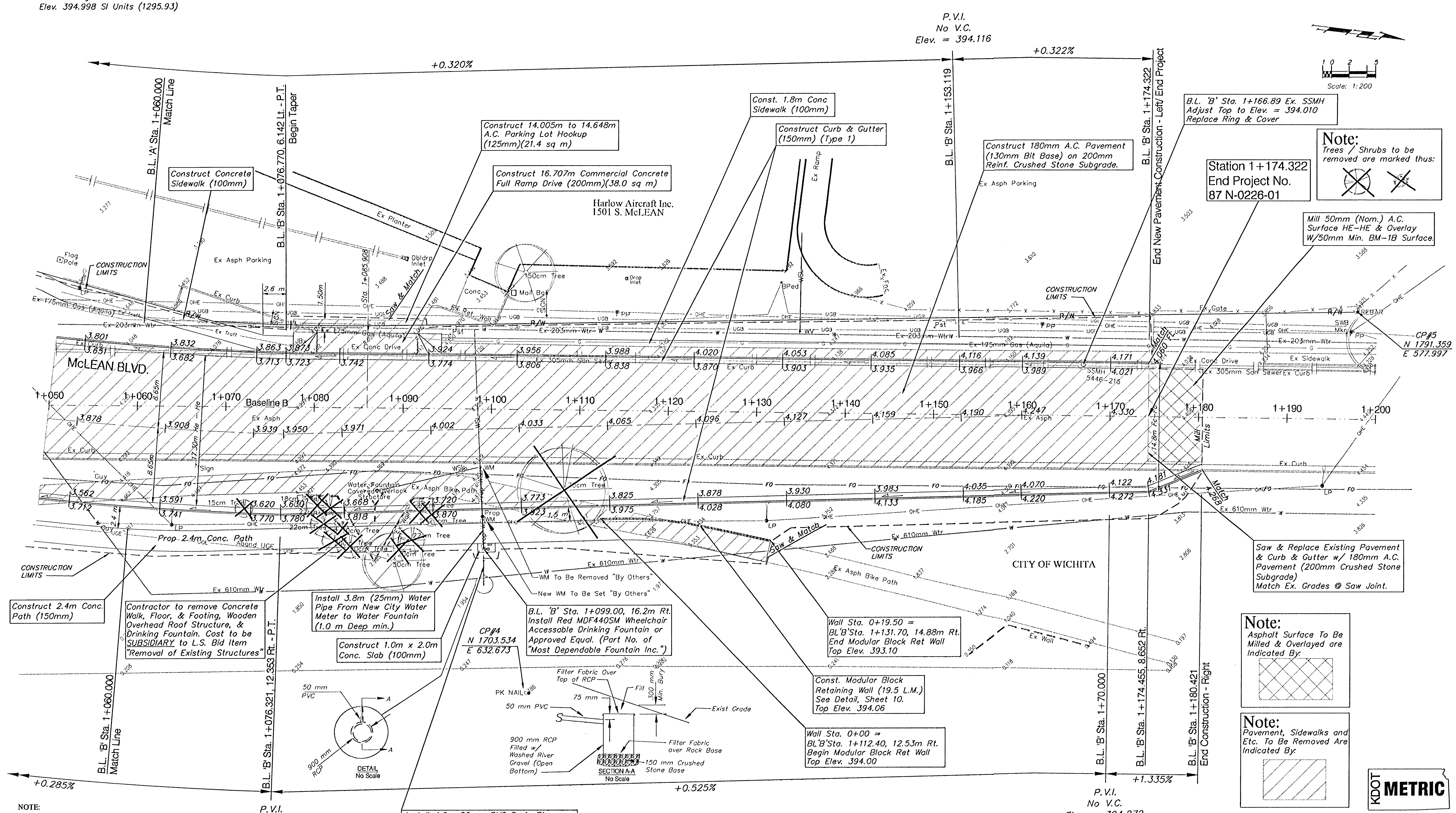
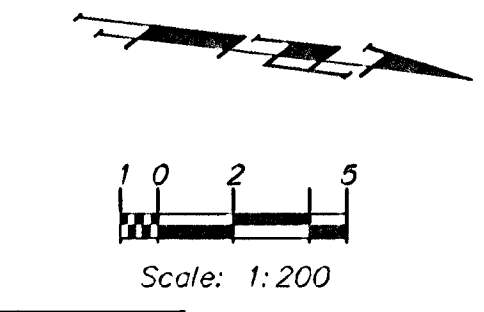


BENCHMARK
 BM #1 - City of Wichita Disc Located
 at the SW Corner of the Harry
 Street Bridge at McLean.
 Elev. 394.998 SI Units (1295.93)

FHWA REGION NO.	STATE	PROJECT NO.	FISCAL YEAR	SHEET NO.	TOTAL SHEETS
7	KANSAS	87-N-0223-01	2002	13	56



NOTE:
 Gas Meters, Utility poles, and Electrical junction pedestals, boxes, etc. are to be REMOVED and RELOCATED as necessary by the Respective Utility Company/Owner PRIOR TO CONSTRUCTION of this Project.

P.V.I.
 No V.C.
 Elev. = 393.780

Install 4.0m 50mm PVC Drain Pipe From Drinking Fountain to Gravel-Filled Buried 900 mm RCP Included in L.S. Bid Item "Wheelchair Accessible Drinking Fountain"(Furnished & Installed)

Note:
 Asphalt Surface To Be Milled & Overlayed are Indicated By:

Note:
 Pavement, Sidewalks and Etc. To Be Removed Are Indicated By:

Note:
 Trees / Shrubs to be removed are marked thus:

B.L. 'B' Sta. 1+166.89 Ex. SSMH Adjust Top to Elev. = 394.010 Replace Ring & Cover

Station 1+174.322
 End Project No.
 87 N-0226-01

Mill 50mm (Nom.) A.C. Surface HE-HE & Overlay W/50mm Min. BM-1B Surface

Saw & Replace Existing Pavement & Curb & Gutter w/ 180mm A.C. Pavement (200mm Crushed Stone Subgrade) Match Ex. Grades @ Saw Joint.

Wall Sta. 0+19.50 = B.L.'B' Sta. 1+131.70, 14.88m Rt. End Modular Block Ret Wall Top Elev. 393.10

Wall Sta. 0+00 = B.L.'B' Sta. 1+112.40, 12.53m Rt. Begin Modular Block Ret Wall Top Elev. 394.00

DESIGN	DRAWN	APPROVED	DATE	SCALE	BAUGHMAN NO
JFB	KWR	JFB	Oct 03	1:200	01-03-E943

PROJECT NUMBER
 472-83781

SHEET NAME
 Pav03

ENGINEERING DIRECTORY
 F:\HarryMcLean\Pav

CAPITAL IMPROVEMENT PROJECT
MCLEAN BOULEVARD PAVING
 B.L. "B" Sta. 1+060.000 to B.L. "B" Sta. 1+180.421
 HARRY & MCLEAN INTERSECTION IMPROVEMENTS

BAUGHMAN COMPANY, P.A.
 ENGINEERING, SURVEYING, & PLANNING
 316-262-7271 • 315 ELLUS • WICHITA, KANSAS 67211

SHEET 13 OF 56

