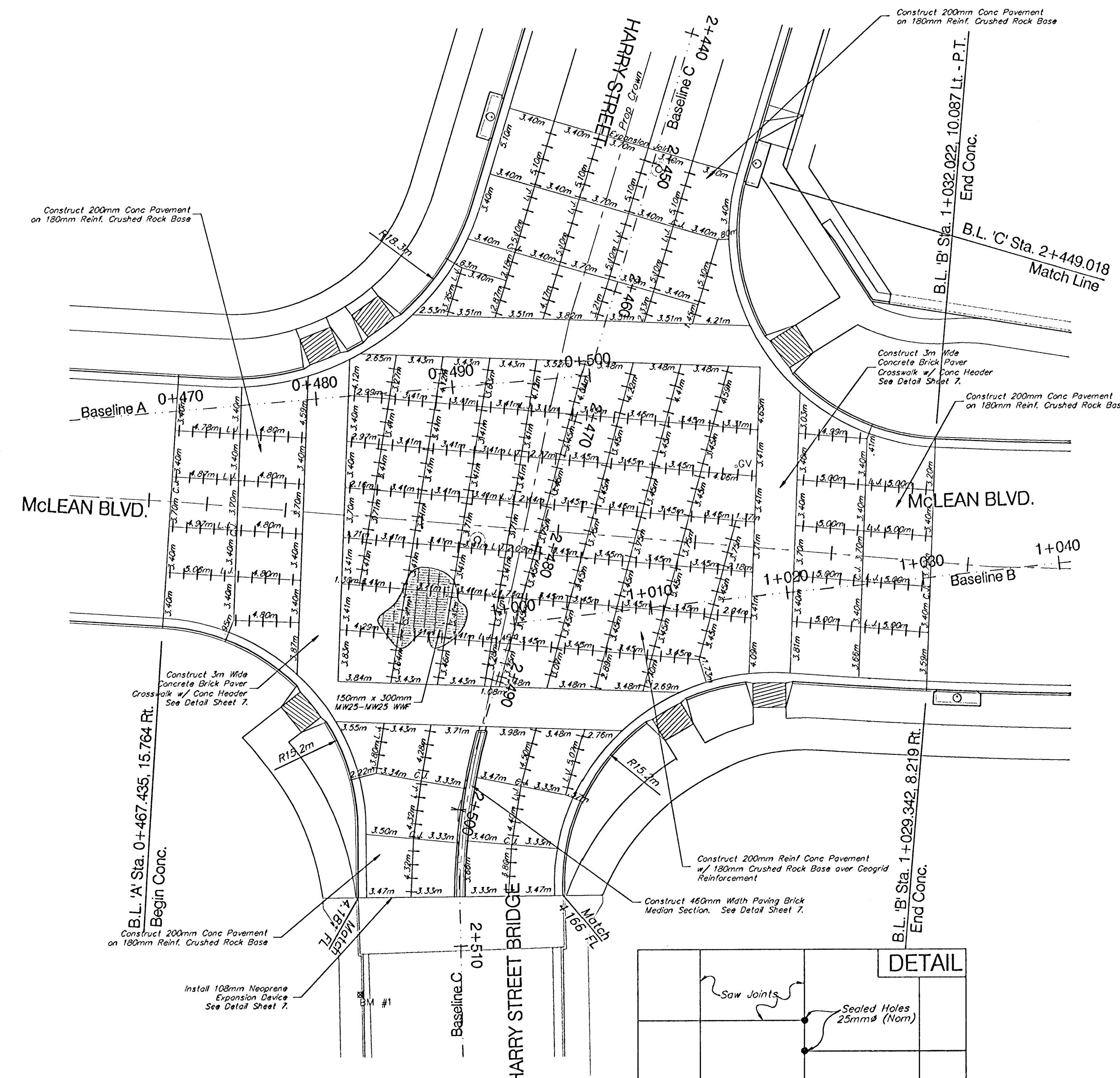
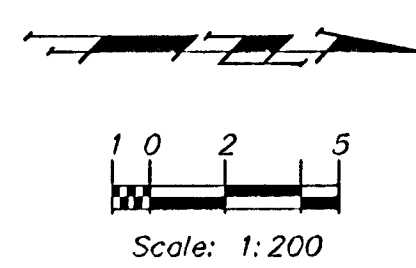
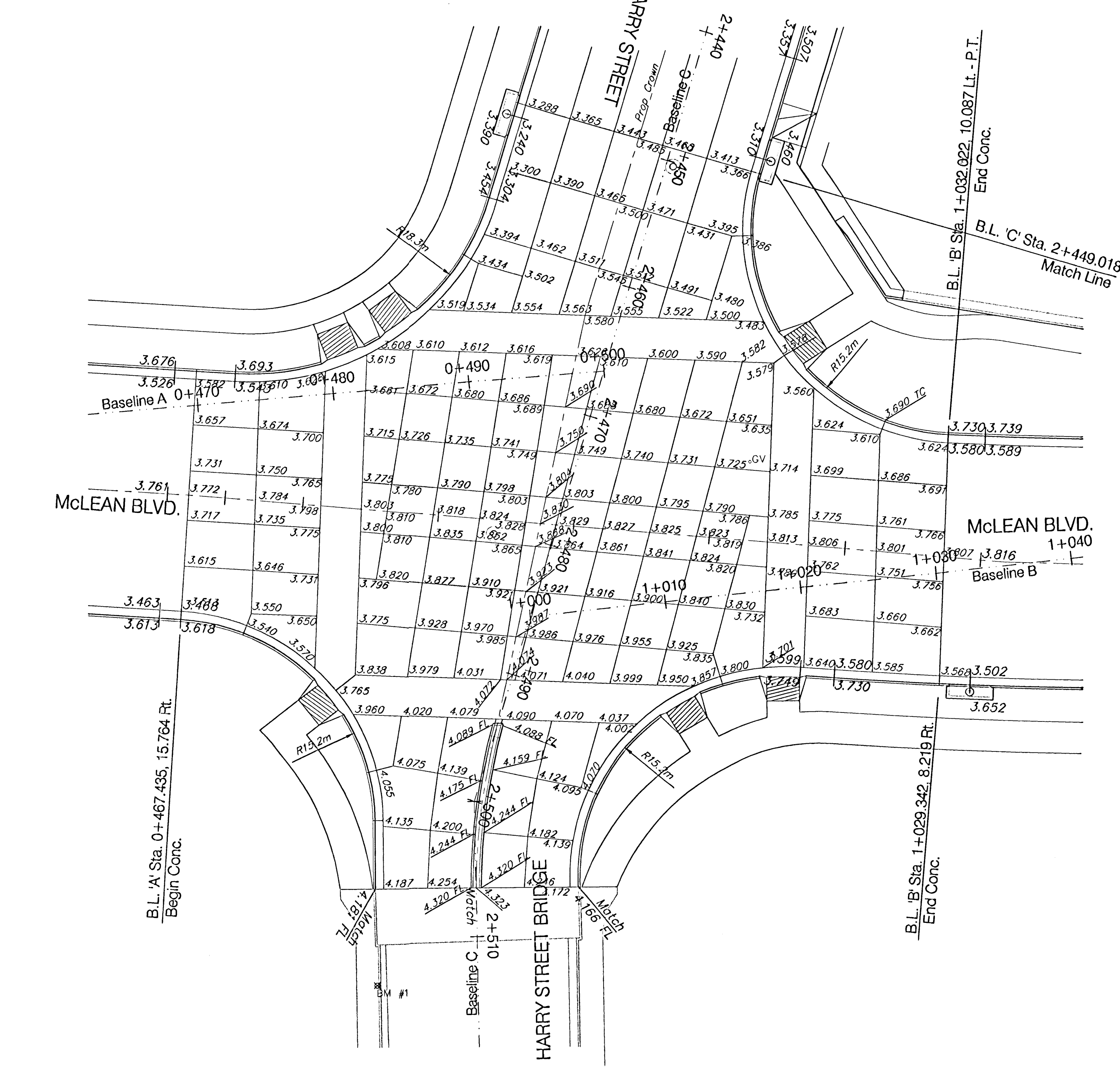
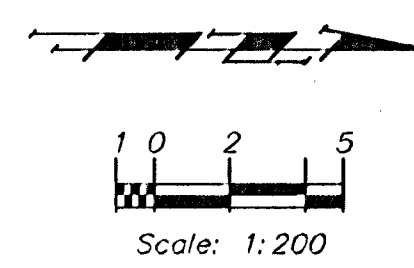


BENCHMARK
 BM #1 - City of Wichita Disc Located
 at the SW Corner of the Harry
 Street Bridge at McLean.
 Elev. 394.998 SI Units (1295.93)



NOTE
 At all locations where joints are not
 congruent through pavement sections,
 Contractor shall drill full pavement depth
 & seal. (See Detail This Sheet)

BENCHMARK
 BM #1 - City of Wichita Disc Located
 at the SW Corner of the Harry
 Street Bridge at McLean.
 Elev. 394.998 SI Units (1295.93)



PROJECT NUMBER 472-83781		SHEET NAME Mstrgrd		ENGINEERING DIRECTORY F:\HarryMcLean\Pav	
DESIGN JFB	DRAWN KWR	APPROVED JFB	DATE Oct 03	SCALE 1:200	BAUGHMAN NO 01-03-E943

CAPITAL IMPROVEMENT PROJECT
HARRY & MCLEAN INTERSECTION
JOINT PLAN & GRADING PLAN
HARRY & MCLEAN INTERSECTION IMPROVEMENTS

BAUGHMAN COMPANY, P.A.
 ENGINEERING, SURVEYING, & PLANNING
316-262-7271 • 315 ELLIS • WICHITA, KANSAS 67211

SHEET
15
OF
56