

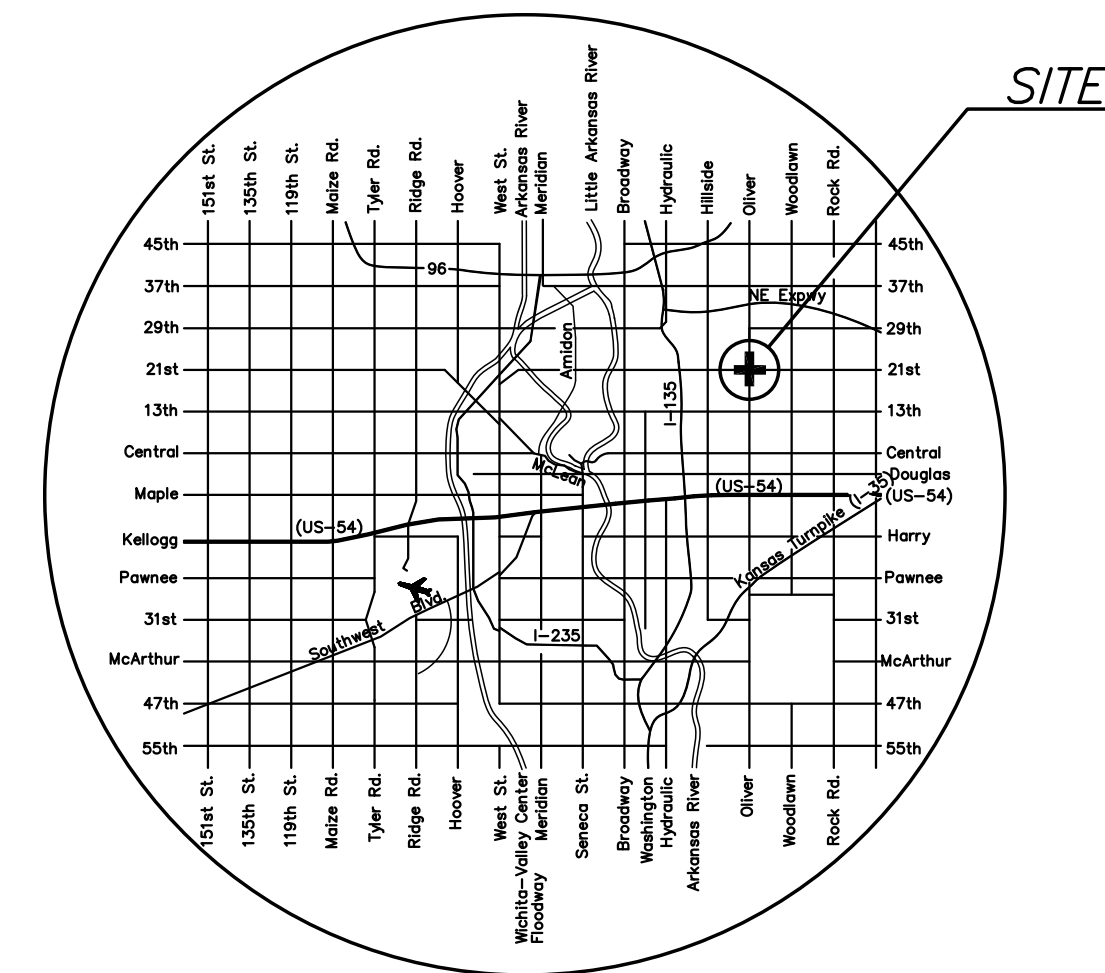
J:\PROJECTS\2016\191104078\_COW\_21ST & OLIVER\_XXXXXX CAD\SHS\505\_CIVIL\GENERAL\16176-TITLE SHEET.DWG  
 PLOTTED: Thursday, September 22, 2016 @ 11:25AM

SHEET NO	DESCRIPTION
1	TITLE SHEET
2	GENERAL NOTES
3-9	TYPICAL SECTIONS
10-19	PAVING PLANS
20-22	GRADING PLANS
23-25	PAVING BUBBLE MAPS
26	BASELINE BUBBLE MAP
27	UTILITY KEY MAP
28-34	STORM SEWER PLAN & PROFILES
35-36	STORM SEWER BUBBLE MAPS
37-49	PAVING DETAILS & INTERSECTION PLANS
50-56	STORM SEWER DETAILS
57	MISCELLANEOUS DETAILS
58-60	WATER LINE PLANS
61	WATER BUBBLE MAP
62-64	WATER DETAILS
65-66	SUMMARY & RECAPITULATION OF QUANTITIES
67-73	EROSION CONTROL PLANS & DETAILS
74-75	ROADSIDE IMPROVEMENT PLANS
76-81	TRAFFIC SIGNAL PLANS & DETAILS
82-83	PAVEMENT MARKING & DETAILS
84-86	TRAFFIC SIGNING PLANS & DETAILS
87	CONSTRUCTION SEQUENCE SUMMARY
88-102	TRAFFIC CONTROL
103	SWS DESIGN INFORMATION
104	DRAINAGE MAP
105-125	CROSS SECTIONS

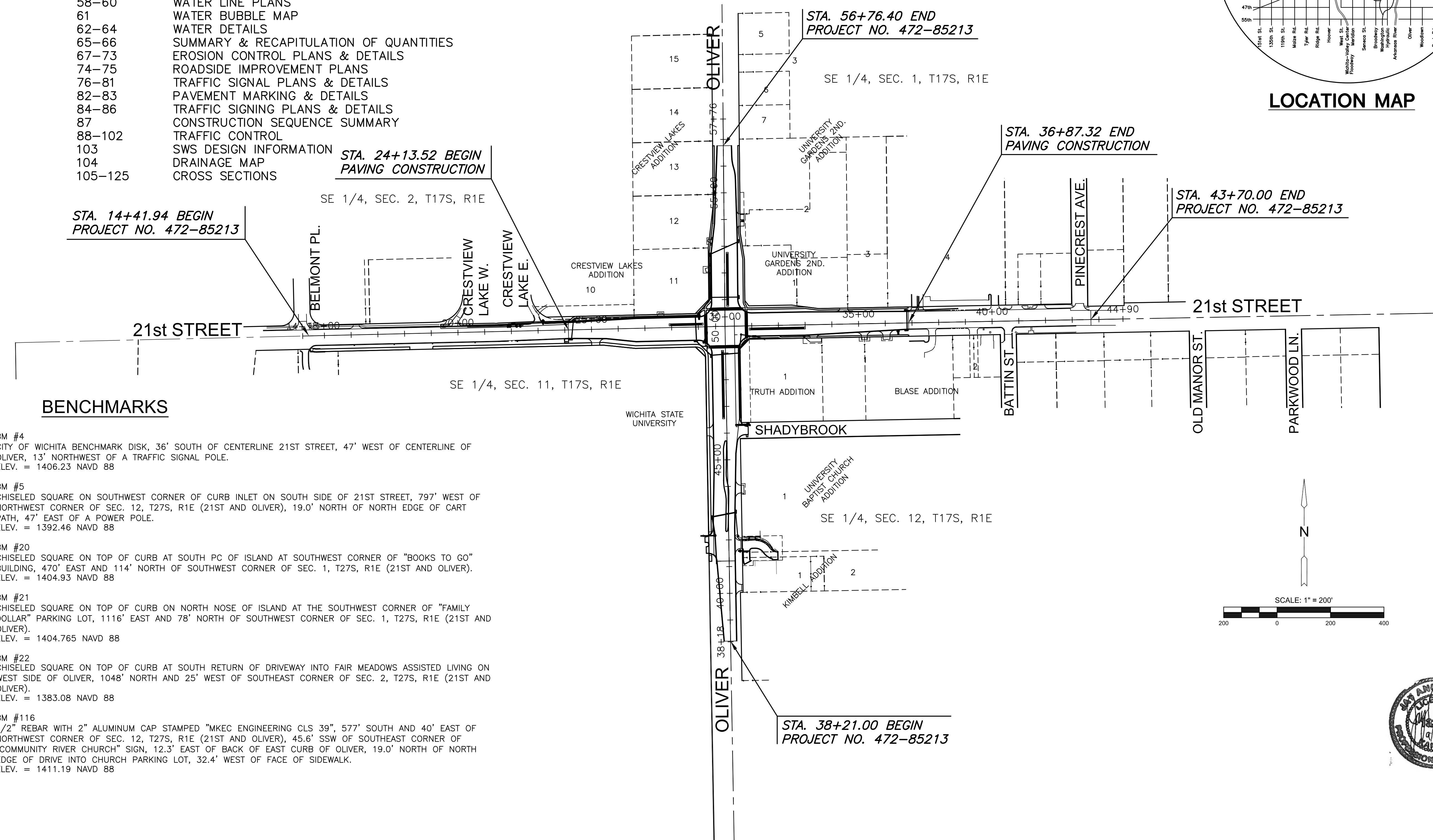
# STREET IMPROVEMENTS FOR

# 21st & OLIVER INTERSECTION

**CITY OF WICHITA**  
**SEDGWICK COUNTY, KANSAS**  
**C.O.W. PROJECT NO. 472-85213**  
**PAVING O.C.A. NO. 707089**  
**C.O.W. PROJECT NO. 448-90740**  
**WATER O.C.A. NO. 636349**

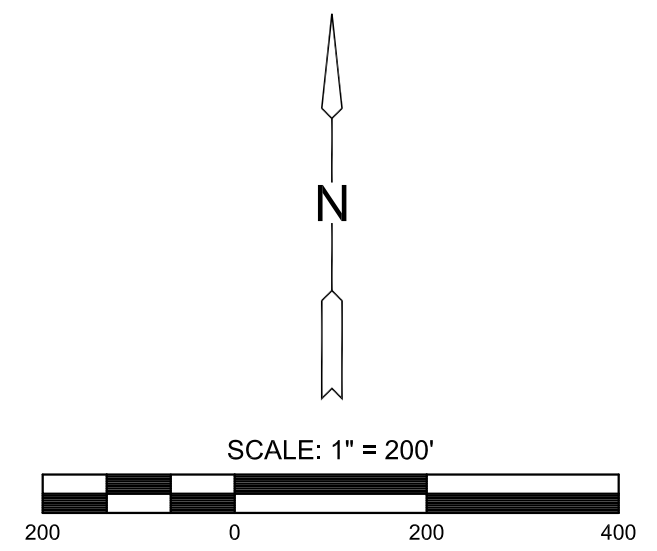


**LOCATION MAP**



**BENCHMARKS**

- BM #4  
CITY OF WICHITA BENCHMARK DISK, 36' SOUTH OF CENTERLINE 21ST STREET, 47' WEST OF CENTERLINE OF OLIVER, 13' NORTHWEST OF A TRAFFIC SIGNAL POLE.  
ELEV. = 1406.23 NAVD 88
- BM #5  
CHISELED SQUARE ON SOUTHWEST CORNER OF CURB INLET ON SOUTH SIDE OF 21ST STREET, 797' WEST OF NORTHWEST CORNER OF SEC. 12, T27S, R1E (21ST AND OLIVER), 19.0' NORTH OF NORTH EDGE OF CART PATH, 47' EAST OF A POWER POLE.  
ELEV. = 1392.46 NAVD 88
- BM #20  
CHISELED SQUARE ON TOP OF CURB AT SOUTH PC OF ISLAND AT SOUTHWEST CORNER OF "BOOKS TO GO" BUILDING, 470' EAST AND 114' NORTH OF SOUTHWEST CORNER OF SEC. 1, T27S, R1E (21ST AND OLIVER).  
ELEV. = 1404.93 NAVD 88
- BM #21  
CHISELED SQUARE ON TOP OF CURB ON NORTH NOSE OF ISLAND AT THE SOUTHWEST CORNER OF "FAMILY DOLLAR" PARKING LOT, 1116' EAST AND 78' NORTH OF SOUTHWEST CORNER OF SEC. 1, T27S, R1E (21ST AND OLIVER).  
ELEV. = 1404.765 NAVD 88
- BM #22  
CHISELED SQUARE ON TOP OF CURB AT SOUTH RETURN OF DRIVEWAY INTO FAIR MEADOWS ASSISTED LIVING ON WEST SIDE OF OLIVER, 1048' NORTH AND 25' WEST OF SOUTHEAST CORNER OF SEC. 2, T27S, R1E (21ST AND OLIVER).  
ELEV. = 1383.08 NAVD 88
- BM #116  
1/2" REBAR WITH 2" ALUMINUM CAP STAMPED "MKEC ENGINEERING CLS 39", 577' SOUTH AND 40' EAST OF NORTHWEST CORNER OF SEC. 12, T27S, R1E (21ST AND OLIVER), 45.6' SSW OF SOUTHEAST CORNER OF "COMMUNITY RIVER CHURCH" SIGN, 12.3' EAST OF BACK OF EAST CURB OF OLIVER, 19.0' NORTH OF NORTH EDGE OF DRIVE INTO CHURCH PARKING LOT, 32.4' WEST OF FACE OF SIDEWALK.  
ELEV. = 1411.19 NAVD 88



STREET IMPROVEMENTS FOR  
**21ST & OLIVER INTERSECTION**  
 WICHITA, KANSAS

©2016  
 MKEC Engineering  
 All Rights Reserved  
 www.mkec.com  
 These drawings and their contents, including, but not limited to, all concepts, designs, & ideas are the exclusive property of MKEC Engineering (MKEC), and may not be used or reproduced in any way without the express consent of MKEC.

**TITLE SHEET**

PROJECT NO.	472-85213	
DATE	SEPT. 2016	
SCALE	1"=150'	
DESIGNED	DRAWN	CHECKED
JRA	LES	JRA
NO.	REVISION	DATE
SHEET NO.		
1 OF 125		