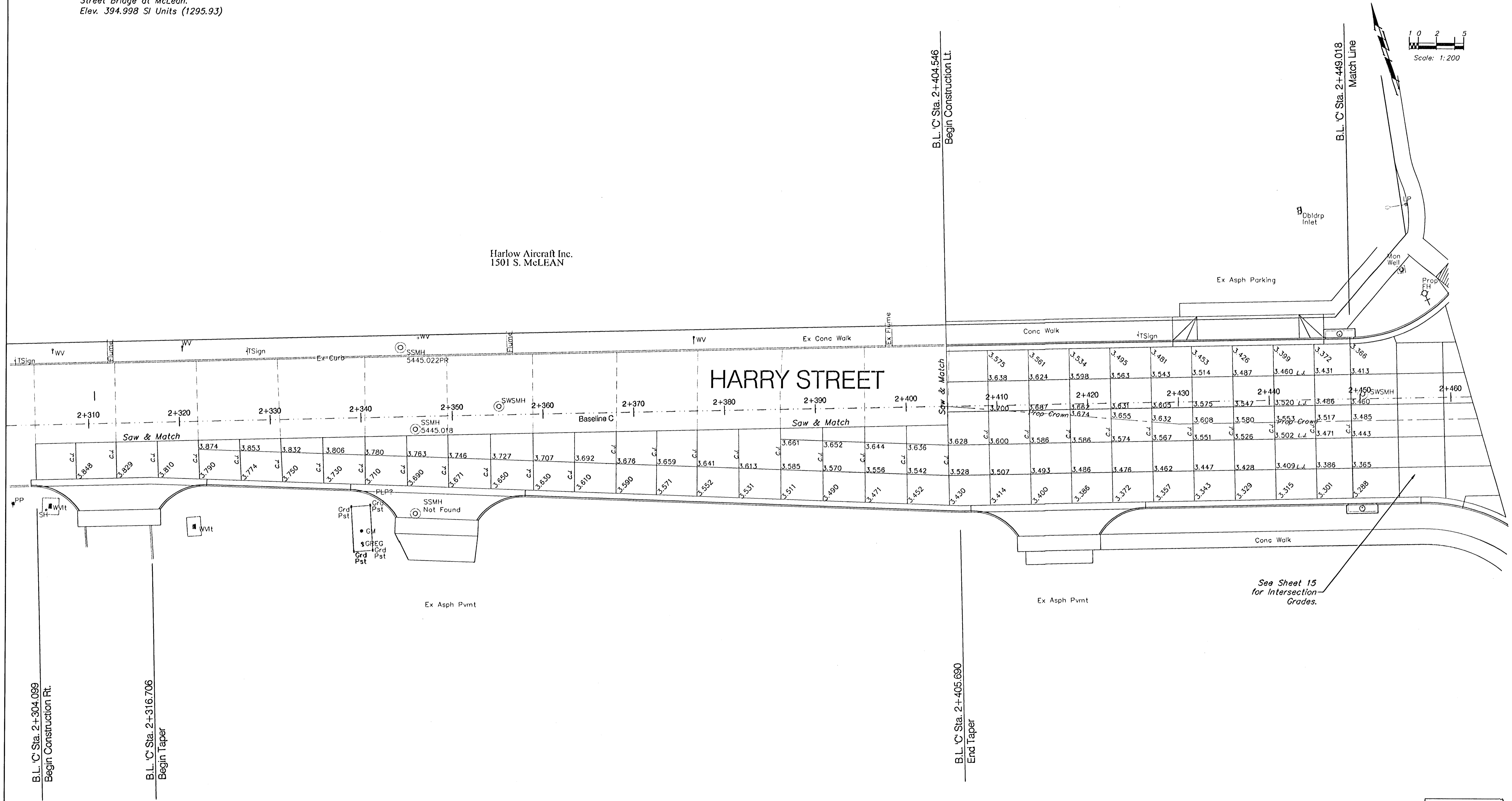
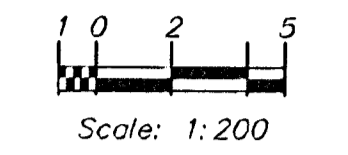


BENCHMARK
 BM #1 - City of Wichita Disc Located
 at the SW Corner of the Harry
 Street Bridge at McLean.
 Elev. 394.998 SI Units (1295.93)

FHWA REGION NO.	STATE	PROJECT NO.	FISCAL YEAR	SHEET NO.	TOTAL SHEETS
7	KANSAS	87-N-0223-01	2002	17	56



PROJECT NUMBER 472-83781		SHEET NAME Harrygrd		ENGINEERING DIRECTORY R:\HarryMcLean\Pav		CAPITAL IMPROVEMENT PROJECT GRADING PLAN for HARRY STREET WEST of McLEAN HARRY & McLEAN INTERSECTION IMPROVEMENTS		BAUGHMAN COMPANY, P.A. ENGINEERING, SURVEYING, & PLANNING 318-282-7271 • 315 ELLIS • WICHITA, KANSAS 67211		SHEET 17 OF 56
DESIGN JFB	DRAWN TA	APPROVED JFB	DATE Aug 2003	SCALE 1:200	BAUGHMAN NO 01-03-E943					