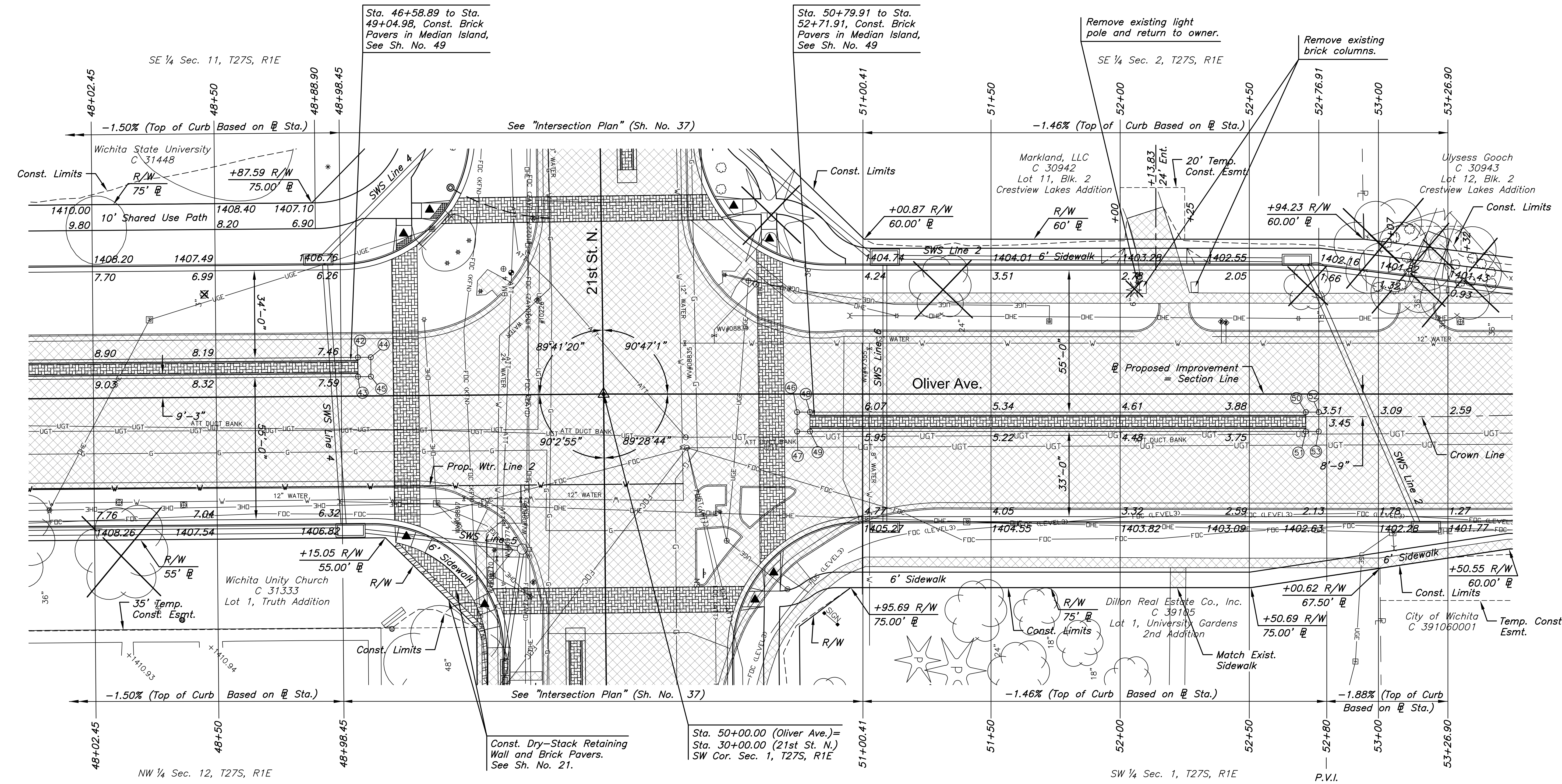


STREET IMPROVEMENTS FOR  
**21ST & OLIVER INTERSECTION**  
WICHITA, KANSAS



Sta. 46+58.89 to Sta. 49+04.98, Const. Brick Pavers in Median Island, See Sh. No. 49

Sta. 50+79.91 to Sta. 52+71.91, Const. Brick Pavers in Median Island, See Sh. No. 49

Remove existing light pole and return to owner.

Remove existing brick columns.

See "Intersection Plan" (Sh. No. 37)

See "Intersection Plan" (Sh. No. 37)

Sta. 50+00.00 (Oliver Ave.) = Sta. 30+00.00 (21st St. N.) SW Cor. Sec. 1, T27S, R1E

Const. Dry-Stack Retaining Wall and Brick Pavers. See Sh. No. 21.

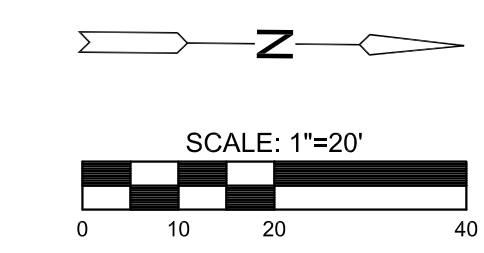
P.V.I. Elev.=1402.65 30' V.C.

Station	Offset	Exist. Elev.	Prop. Elev.	Description
52+39.21	28.06' Lt.	1403.35	-	Water Meter Relocated
52+40.99	27.69' Lt.	1403.32	-	Water Meter Relocated

\*Station and offset for meter relocations are at the existing meter location. Proposed location to be field verified.

Point No.	Station	Offset	Elevation	
			Flowline	Top Curb
42	49+04.98	15.00' Lt.	1407.38	1408.05
43	49+04.98	7.50' Lt.	1407.49	1408.16
44	49+09.98	15.00' Lt.	1407.28	1407.28
45	49+09.98	7.50' Lt.	1407.38	1407.38
46	50+74.91	7.00' Rt.	1406.26	1406.26
47	50+74.91	14.50' Rt.	1406.03	1406.03
48	50+79.91	7.00' Rt.	1406.26	1406.93
49	50+79.91	14.50' Rt.	1406.05	1406.72
50	52+71.91	7.00' Rt.	1403.57	1404.24
51	52+71.91	14.50' Rt.	1403.44	1404.11
52	52+76.91	7.00' Rt.	1403.46	1403.46
53	52+76.91	14.50' Rt.	1403.34	1403.34

**Note:**  
Grading on the WSU property will be necessary to construct the shared use sidewalk at the elevations shown. Construction associated with various private WSU projects may be in progress at the same time as this project or may have occurred prior to this project. As a result, grading requirements on WSU property may be different than indicated on the plans. The contractor shall coordinate grading activities on the WSU property with the contractors and engineers associated with these other projects prior to performing excavation adjacent to the shared use sidewalk.



- LEGEND**
-  Pavement Removal
  -  Construct Wheelchair Ramp See Sh. No. 48
  -  Tree Removal

©2016 MKEC Engineering All Rights Reserved www.mkec.com  
These drawings and their contents, including, but not limited to, all concepts, designs, & lists are the exclusive property of MKEC Engineering (MKEC), and may not be used or reproduced in any way without the express consent of MKEC.

**PAVING PLAN - OLIVER AVE.**

PROJECT NO.	472-85213	
DATE	SEPT. 2016	
SCALE	1"=20'	
DESIGNED	JRA	
DRAWN	DMU	
CHECKED	JRA	
NO.	REVISION	DATE
SHEET NO.	18 OF 125	