

PLOTTED: Thursday, September 22, 2016 @ 01:57PM

J:\PROJECTS\2016\19104078_COW_21ST & OLIVER_XXXXXX CAD\SHS\505_CWALS\SWS\15178206.DWG

STA. 11+12.47, SWS LINE 7=
BL STA. 42+85.00, OLIVER, 60.07' LT.
CONST. TYPE 1 CURB INLET,
L=10'-0", W=5'-0"
INLET TOP=1408.64

STA. 12+03.80, SWS LINE 7=
BL STA. 43+05.00, OLIVER, 27.62' RT.
CONST. TYPE 1 CURB INLET,
L=10'-0", W=3'-0"
INLET TOP=1408.77

STA. 11+04.76, SWS LINE 8=
BL STA. 41+12.49, OLIVER, 47.00' LT.
CONST. PIPE PLUG
(CURB INLET BY OTHERS),
L=10'-0", W=4'-0"
INLET TOP=1403.23

STA. 10+00.00, SWS LINE 7=
STA. 16+47.0, SWS LINE 2B,
PROJECT A-012817(8)
BL STA. 42+16.67, OLIVER, 95.0' LT.
MANHOLE BY OTHERS.

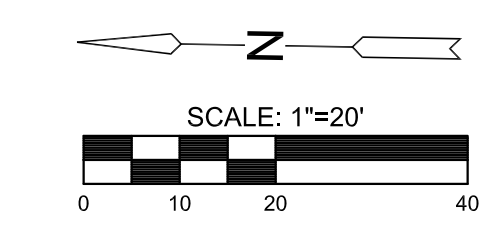
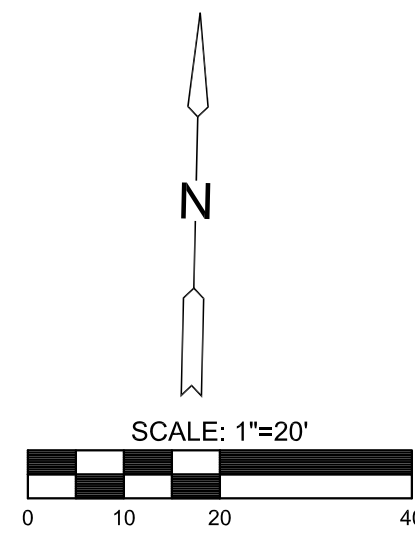
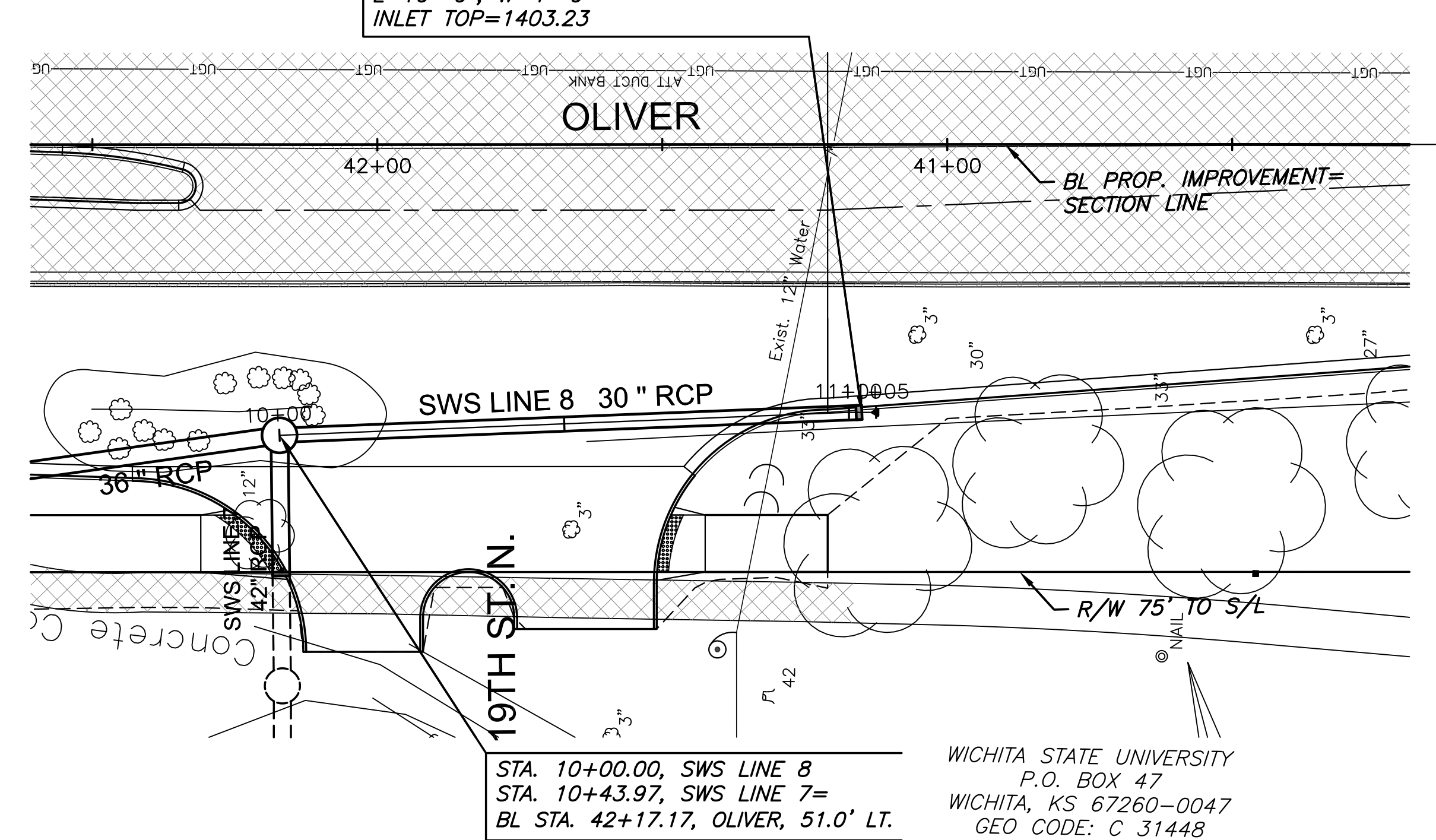
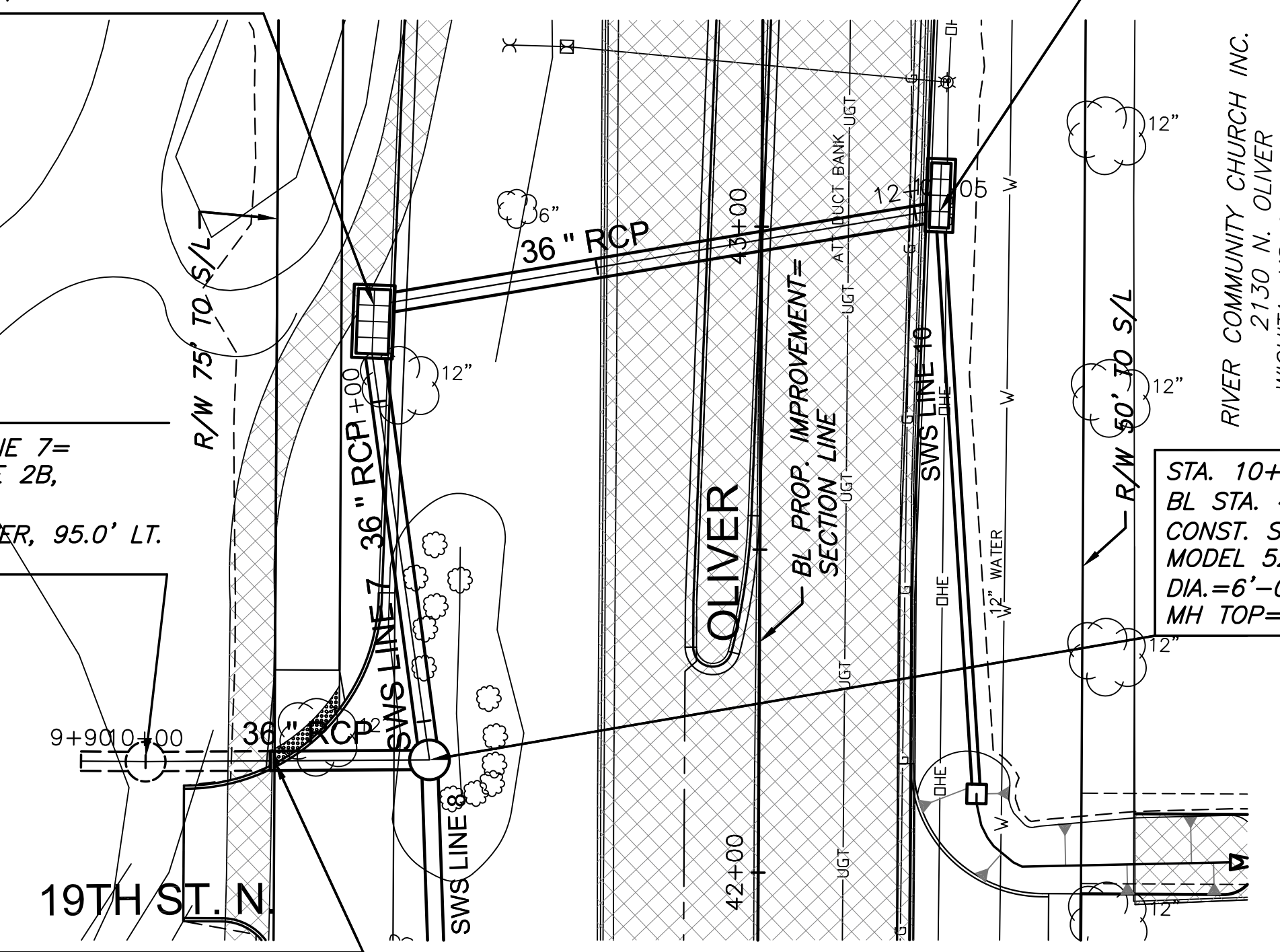
STA. 10+43.97, SWS LINE 7=
BL STA. 42+17.17, OLIVER, 51.00' LT.
CONST. STD. MANHOLE W/BMP, INC.
MODEL 52RTB72 SNOUT OR EQUAL.,
DIA.=6'-0"
MH TOP=1408.62

STA. 10+00.00, SWS LINE 8
STA. 10+43.97, SWS LINE 7=
BL STA. 42+17.17, OLIVER, 51.0' LT.

WICHITA STATE UNIVERSITY
P.O. BOX 47
WICHITA, KS 67260-0047
GEO CODE: C 31448

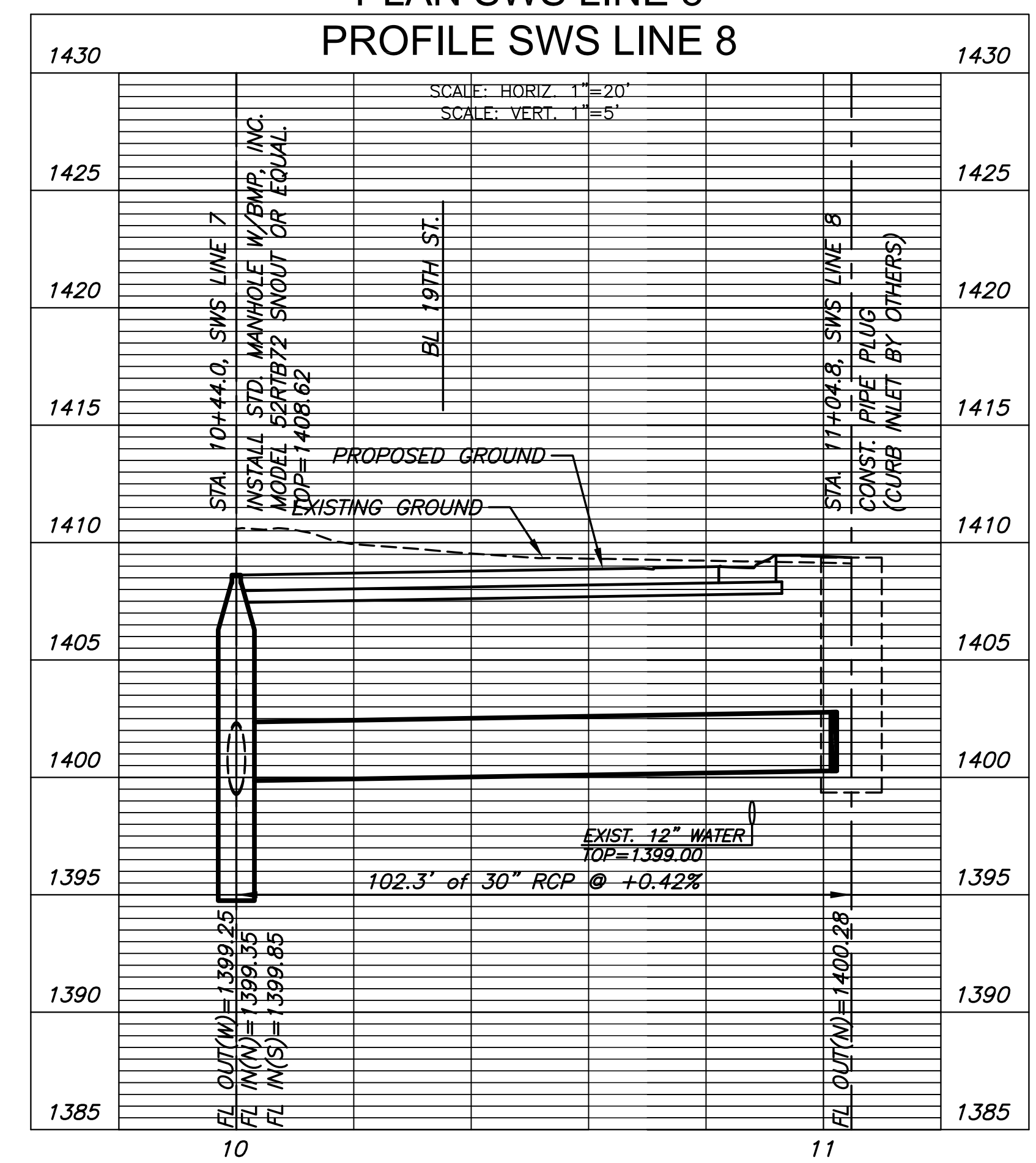
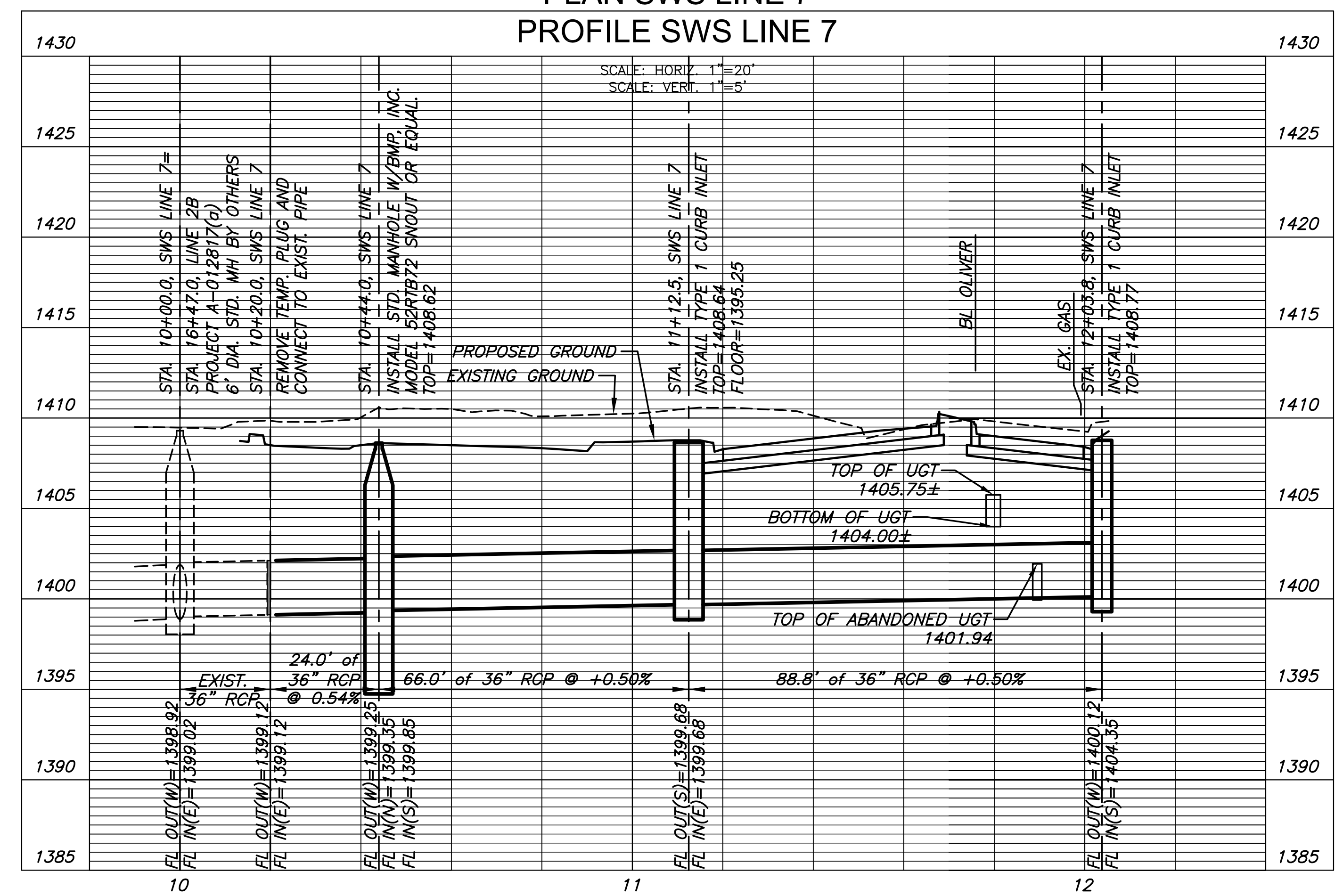
STA. 10+19.97, SWS LINE 7=
BL STA. 42+16.90, OLIVER, 75.00' LT.
REMOVE TEMP. PIPE PLUG AND
CONNECT TO EXISTING PIPE.
CONNECTION IS SUBSIDIARY.

NOTE:
Contractor to confirm that location and depth of pipe
at upstream end conform with Project 472-85214.



PLAN SWS LINE 7
PROFILE SWS LINE 7

PLAN SWS LINE 8
PROFILE SWS LINE 8



STREET IMPROVEMENTS FOR
21ST & OLIVER INTERSECTION
WICHITA, KANSAS

©2016
MKEC Engineering
All Rights Reserved
www.mkec.com
These drawings and their contents, including, but not limited to, all concepts, designs, & ideas are the exclusive property of MKEC Engineering (MKEC), and may not be used or reproduced in any way without the express consent of MKEC.

STORM SEWER
LINE 7 AND
LINE 8

PROJECT NO.	472-85213	
DATE	SEPT. 2016	
SCALE	1"=20'	
DESIGNED	DRAWN	CHECKED
JRA	WNJ	JRA

NO.	REVISION	DATE
SHEET NO.		
33 OF 125		