

STREET IMPROVEMENTS FOR  
**21ST & OLIVER INTERSECTION**  
WICHITA, KANSAS

©2016  
MKEC Engineering  
All Rights Reserved  
www.mkec.com  
These drawings and their contents, including, but not limited to, all concepts, designs, & ideas are the exclusive property of MKEC Engineering (MKEC), and may not be used or reproduced in any way without the express consent of MKEC.

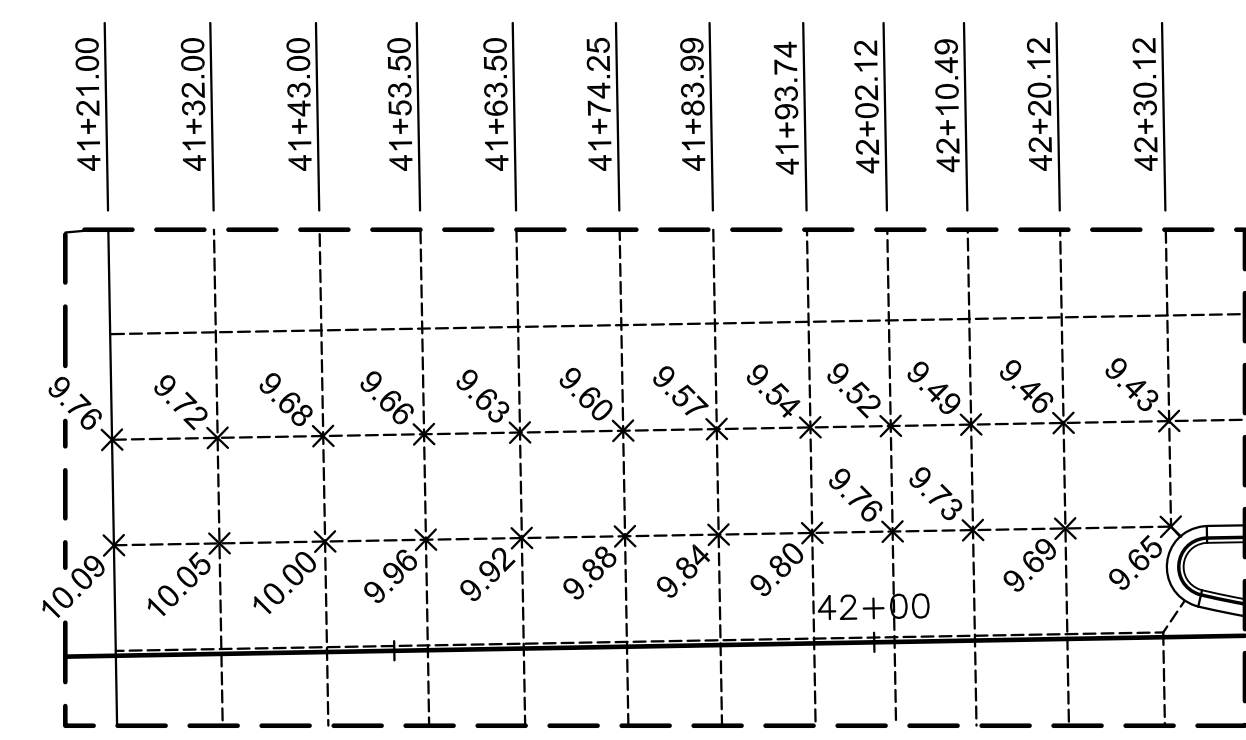
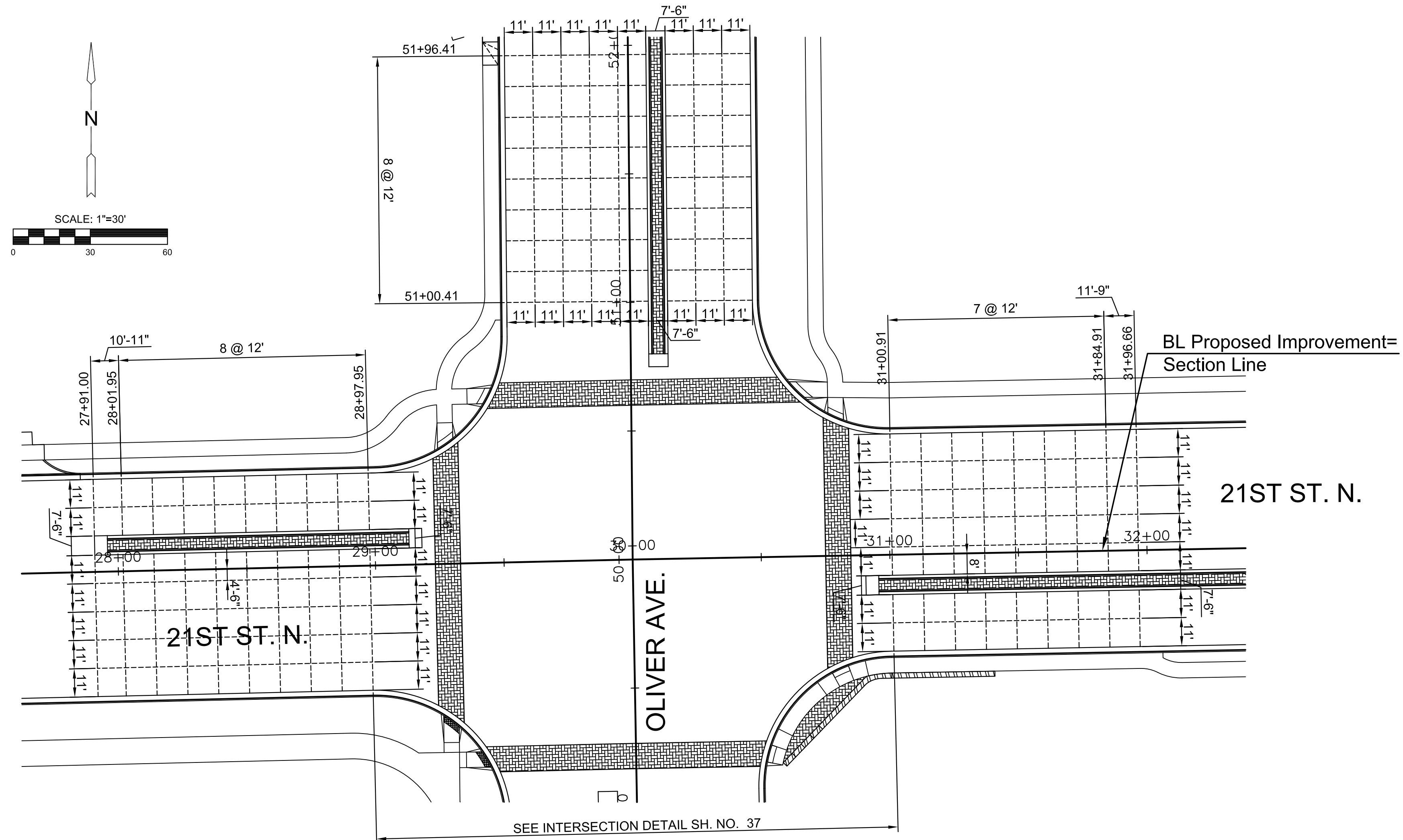
**CONCRETE PAVING JOINTING PLAN**

PROJECT NO.	472-85213	
DATE	SEPT. 2016	
SCALE	1"=30'	
DESIGNED	DRAWN	CHECKED
JRA	LES	JRA

NO.	REVISION	DATE

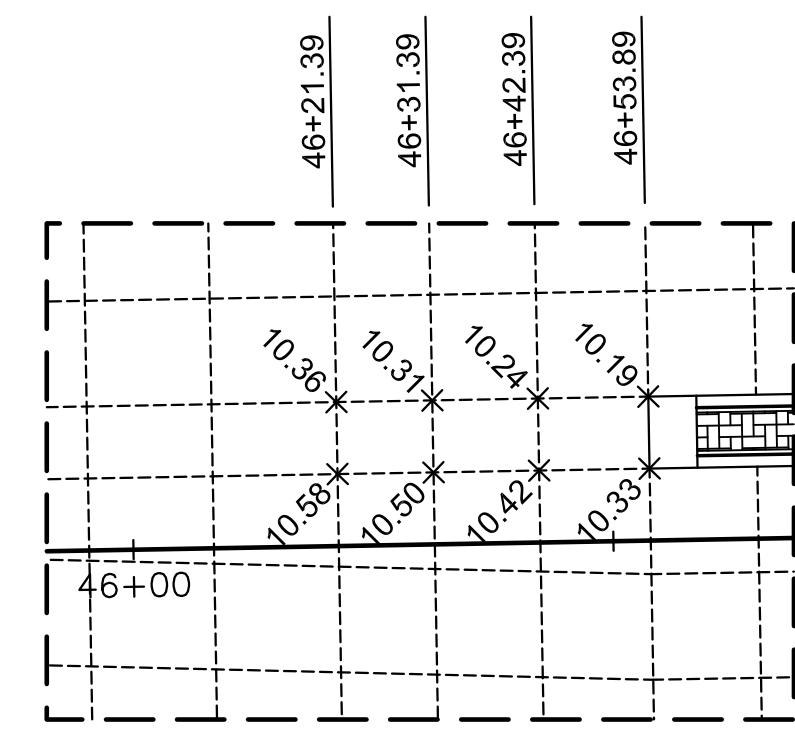
SHEET NO.

J:\PROJECTS\2016\150104078\_COW\_21ST & OLIVER\_XXXXX CAD\SHOTS\05 CIVIL\PAV15178-INT.DWG  
 PLOTTED: Thursday, September 22, 2016 @ 02:22PM



DETAIL A

**NOTE**  
'DETAIL A' & 'DETAIL B' PROVIDE SPOT ELEVATIONS REQUIRED TO CONSTRUCT TRANSITIONS IN AREAS WHERE TRANSVERSE GRADES ARE NOT CONSISTENT WITH THE TYPICAL SECTIONS. REFER TO CROSS SECTIONS FOR MORE INFORMATION.



DETAIL B

