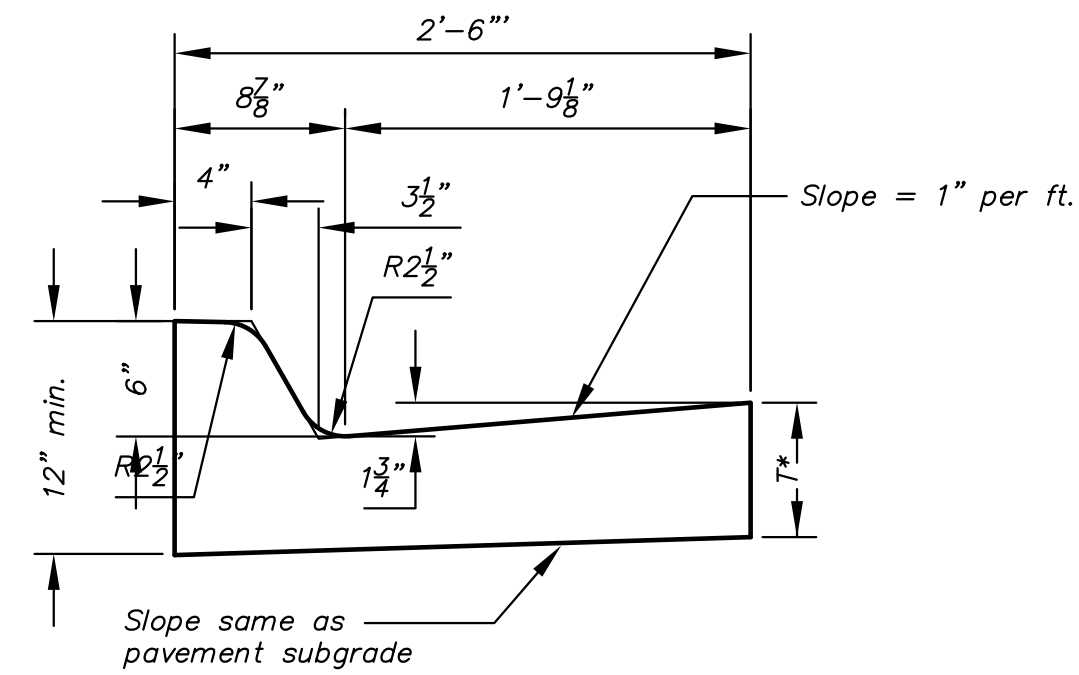
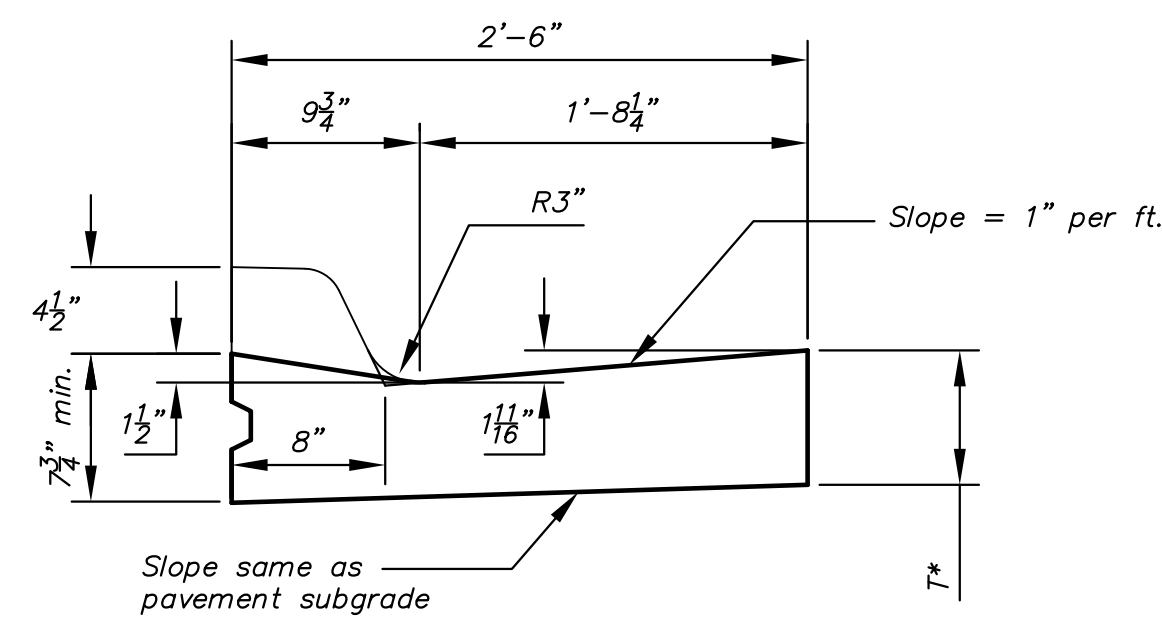


**TYPE 1
(Arterial curb)**

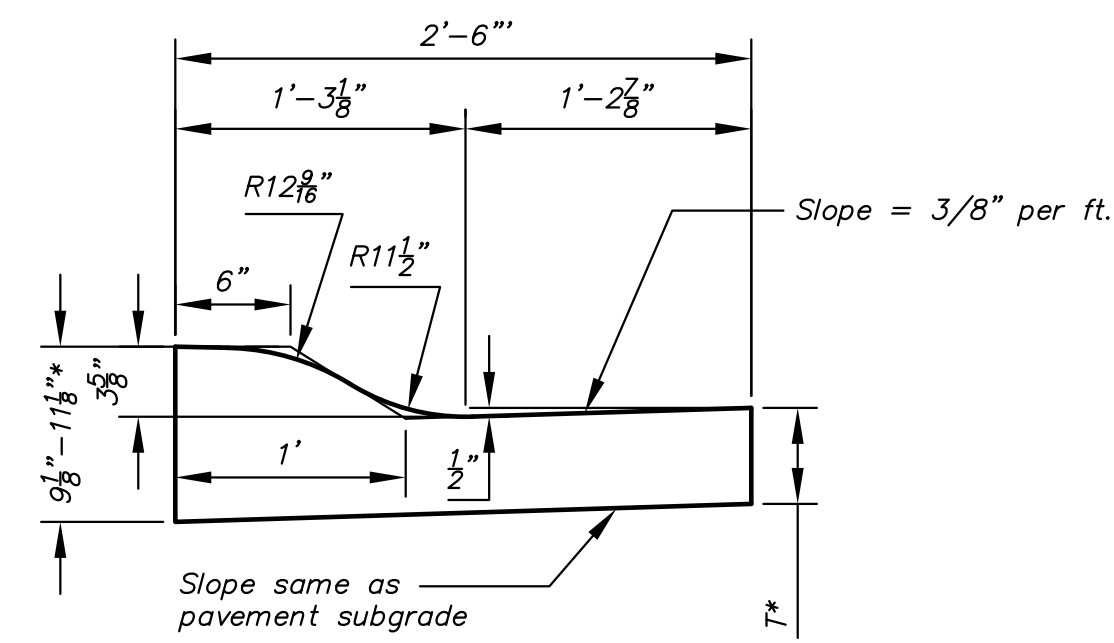


COMBINED CURB & GUTTER (6")

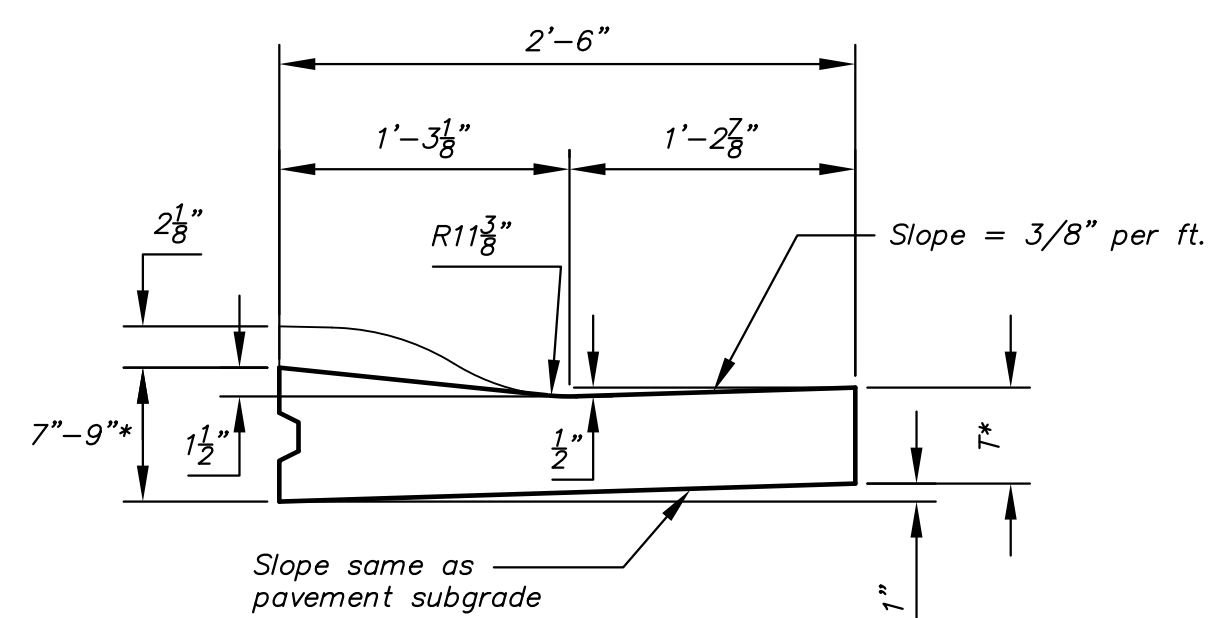


COMBINED CURB & GUTTER (1 1/2")

**TYPE 2
(Roll curb)**

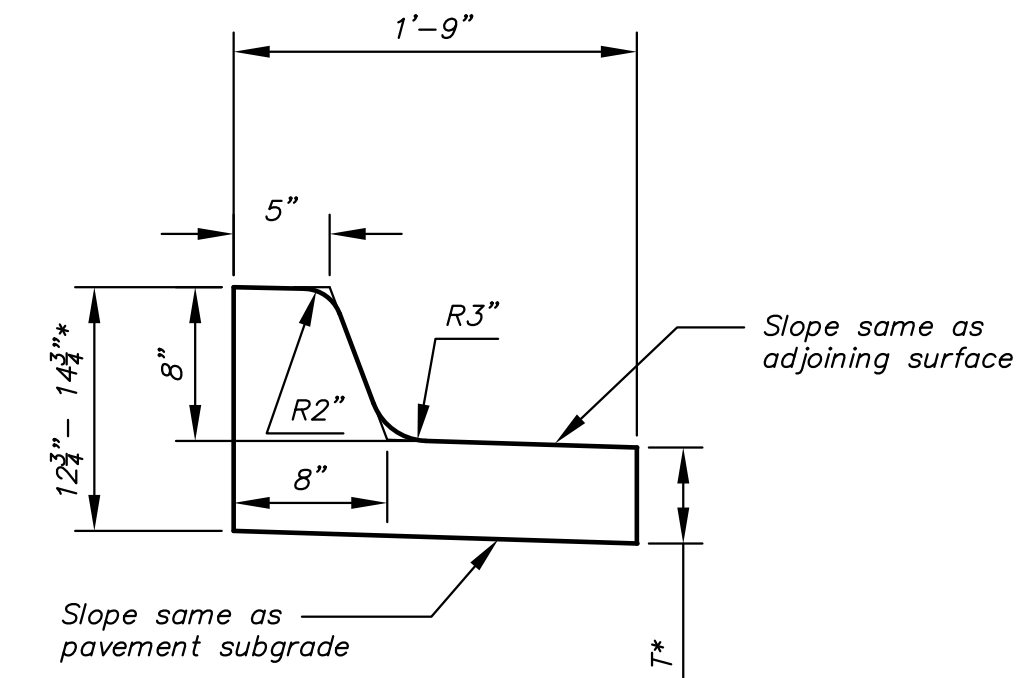


COMBINED CURB & GUTTER (3 5/8")

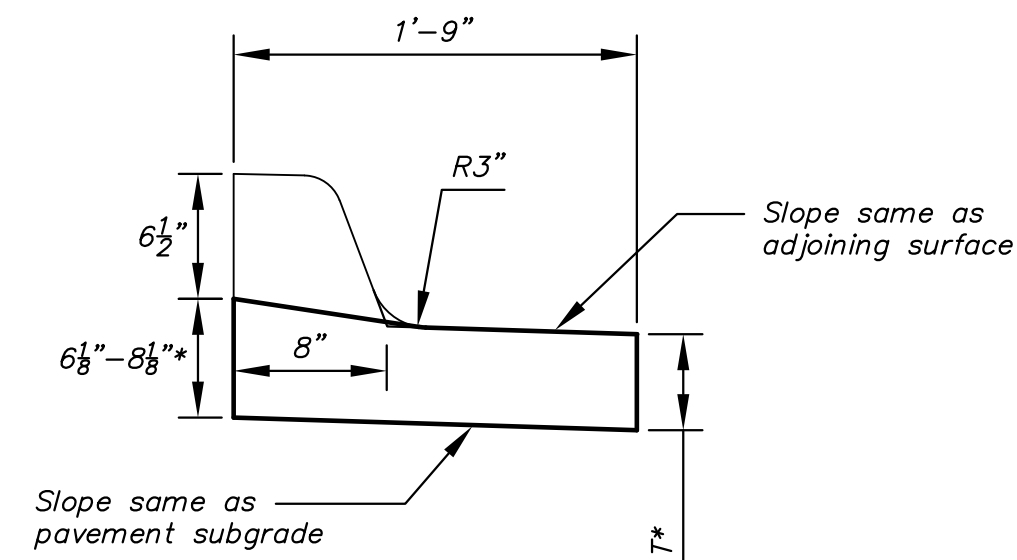


COMBINED CURB & GUTTER (1 1/2")

**TYPE 3
(Median curb)**

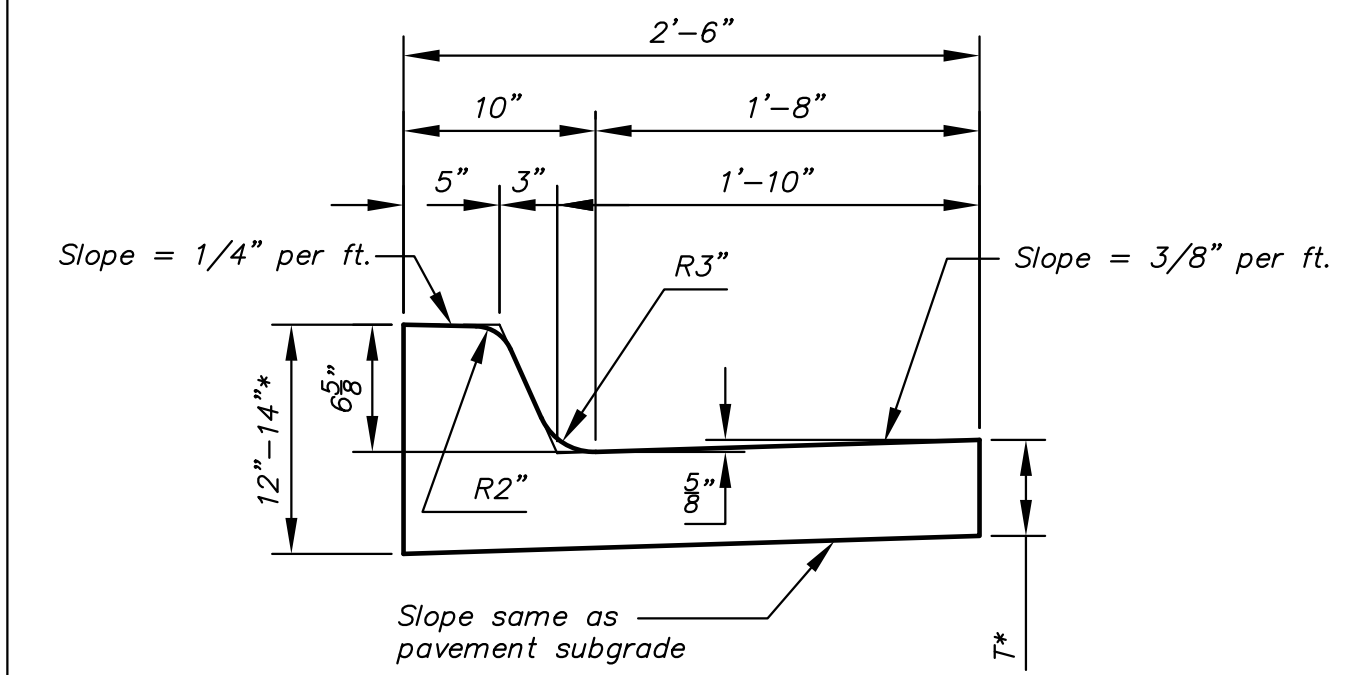


COMBINED CURB & GUTTER (8")

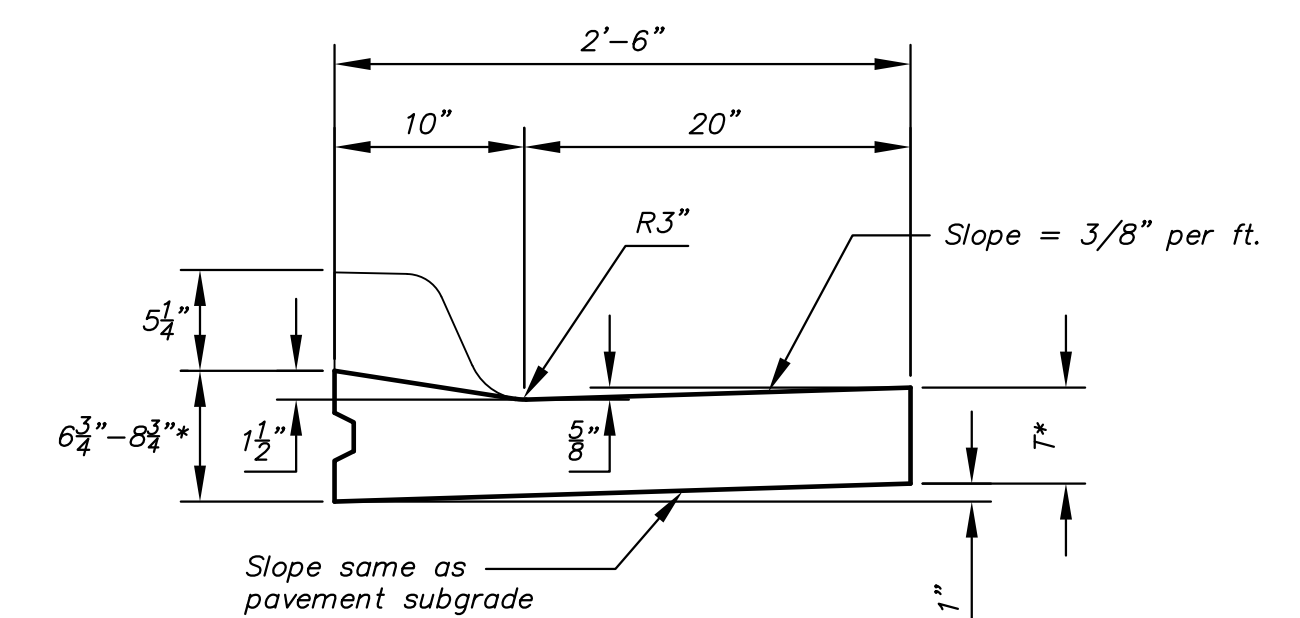


COMBINED CURB & GUTTER (1 1/2")

**TYPE 4
(Residential curb)**

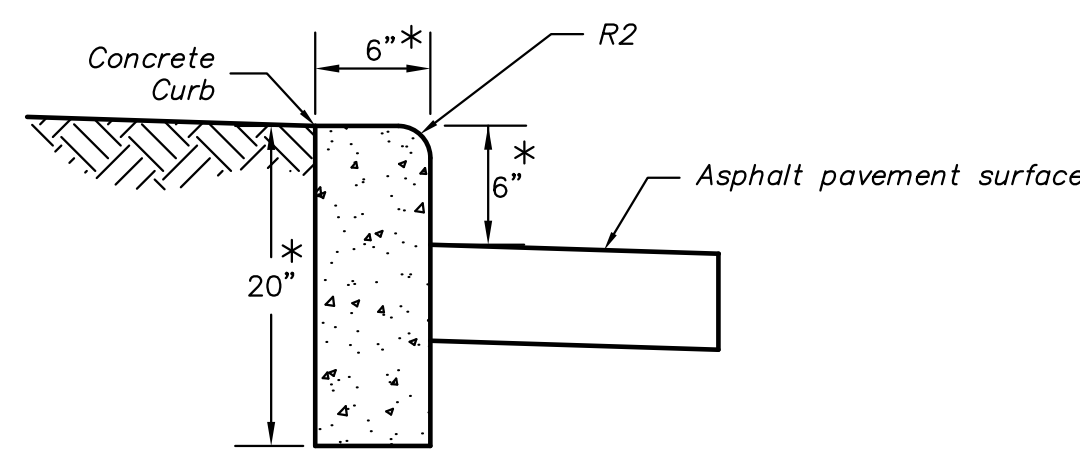


COMBINED CURB & GUTTER (6 5/8")



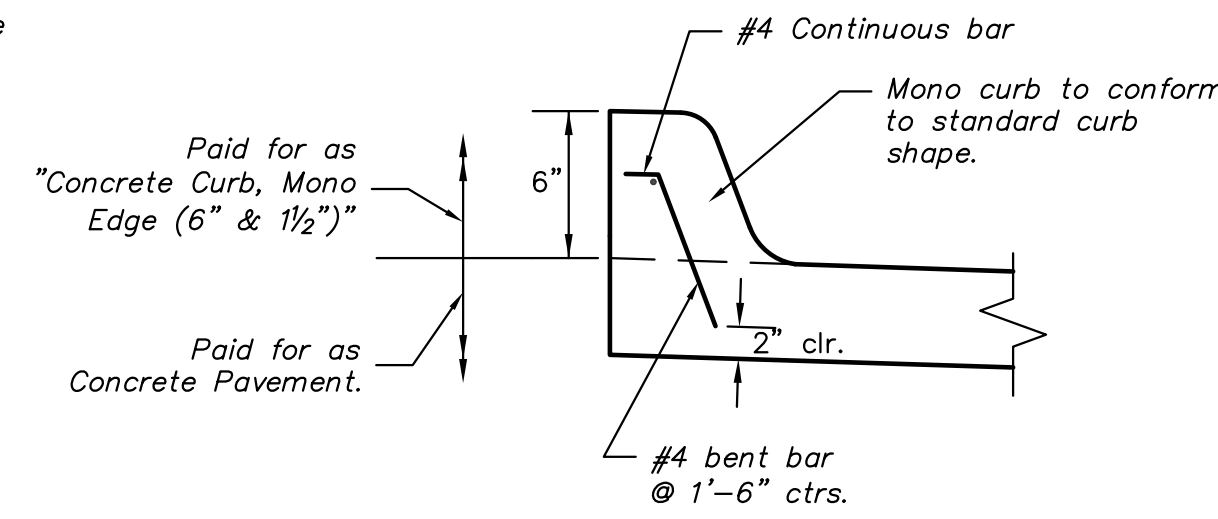
COMBINED CURB & GUTTER (1 1/2")

T* = Thickness of curb to adjust with pavement thickness

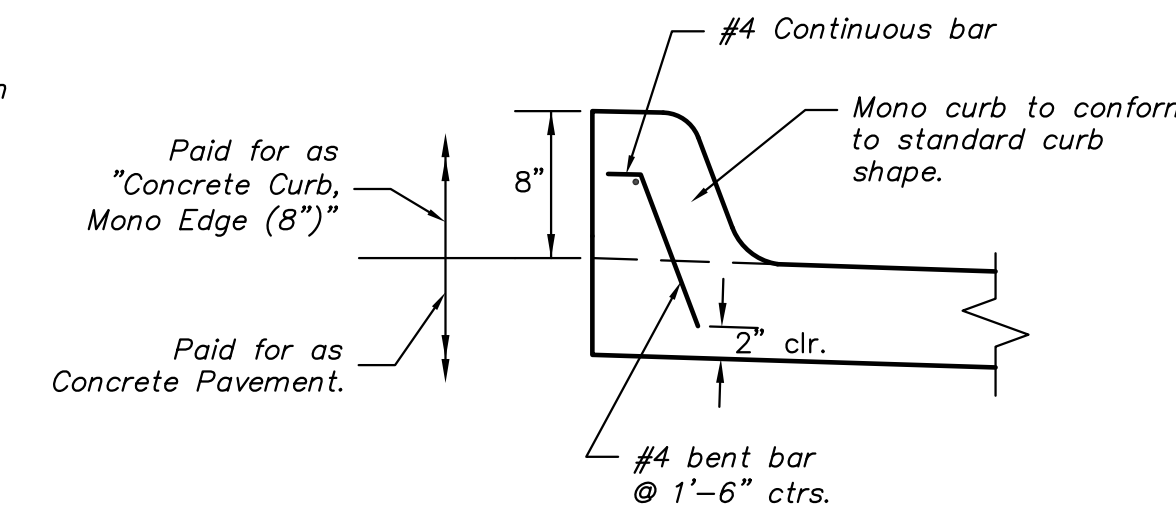


CONCRETE CURB, MONO EDGE, SPECIAL

* Dimensions to be 4" wide 12" deep when constructed on the drive on sheet 22. Height above pavement is shown on sheet 22.



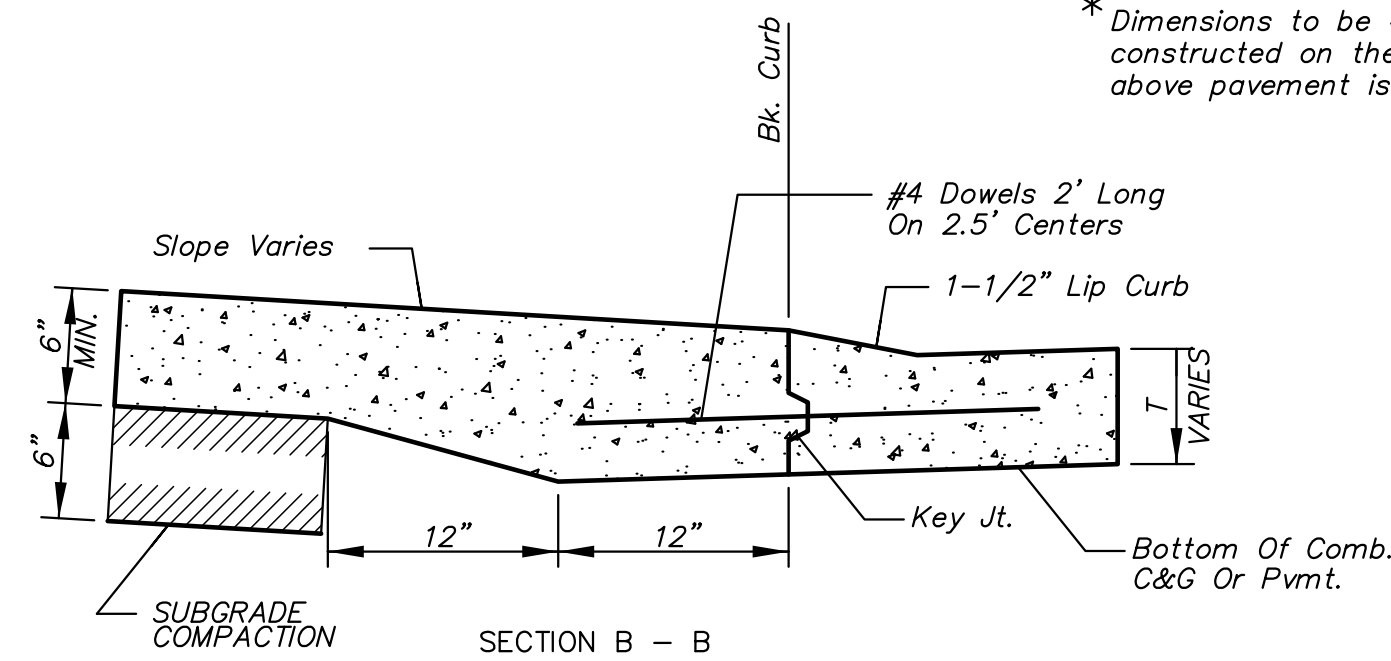
CONCRETE CURB, MONO EDGE, (6" & 1 1/2")



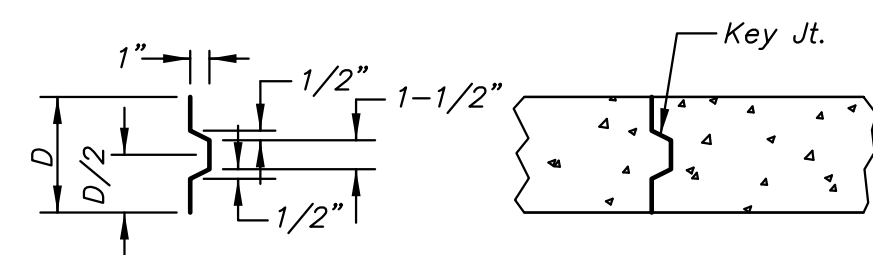
CONCRETE CURB, MONO EDGE, (8")

GENERAL NOTES

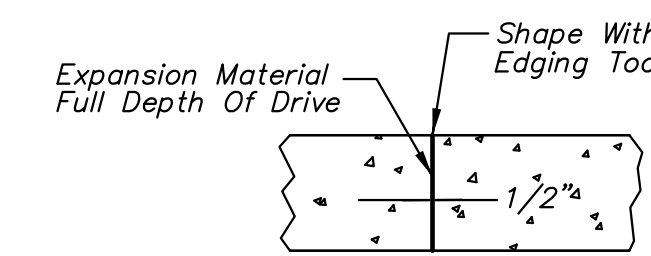
- Expansion (isolation) joints shall be constructed a maximum of 300' apart and at all PIs, PCs, cul-de-sac quadrants, and ends of returns.
- Contraction joints shall be constructed a minimum of 12' apart.
- Joint sealer shall be required at all joints on arterial and industrial streets and at intersections on residential streets.
- The bid item "Concrete Curb, Type 3, special" shall be identical to Type 3 median Curb except the height of curb shall be as shown on the plans.
- Reinforcing not necessary if mono curb is cast with the concrete pavement.



BACK OF CURB DETAIL



ALT. LONGITUDINAL CONSTRUCTION JOINT



EXPANSION JOINT (E.J.)

			CURB & GUTTER DETAILS		
			CITY ENGINEER GARY L. JANZEN, P.E.		
PROJECT NUMBER 472-85213	OCA NUMBER 707089	DATE 12/2010			
CITY ENGINEER'S OFFICE CITY HALL - SEVENTH FLOOR 455 NORTH MAIN STREET WICHITA, KANSAS 67202-1620 (316) 268-4501			SHEET 44 OF 125		