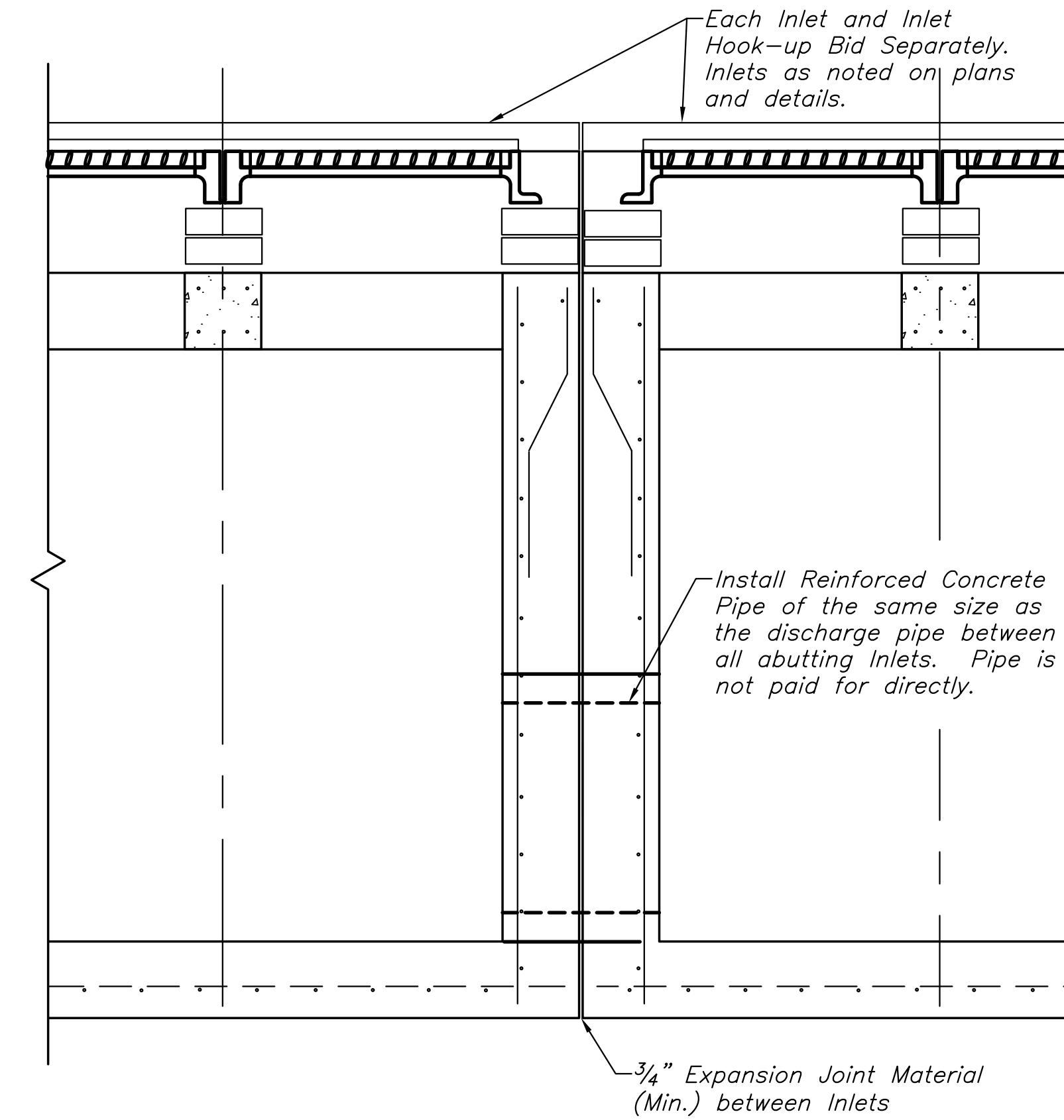
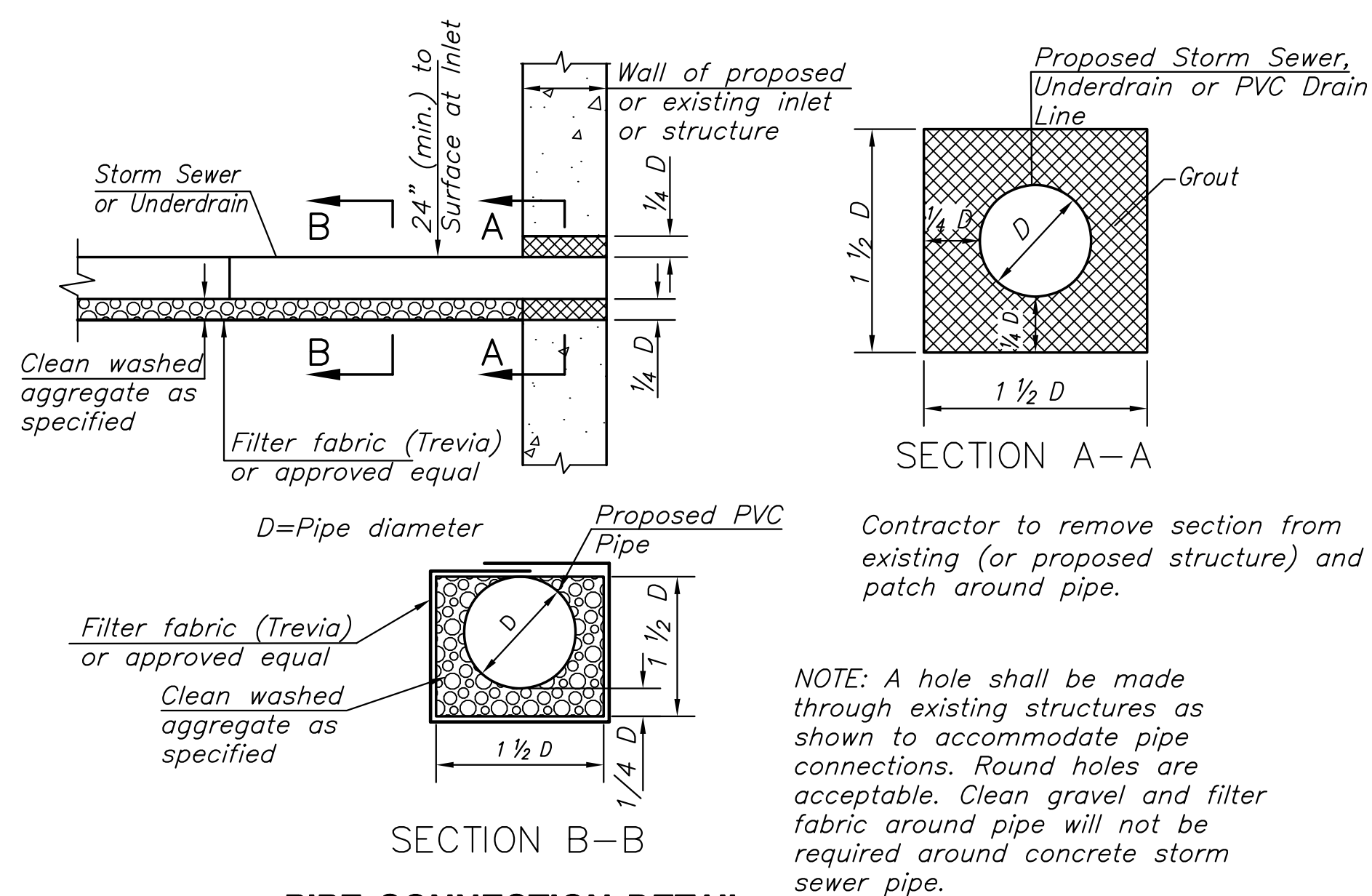


STORM SEWER TRENCH DETAILS



ABUTTING INLET CONNECTION DETAIL



Contractor to remove section from existing (or proposed structure) and patch around pipe.

NOTE: A hole shall be made through existing structures as shown to accommodate pipe connections. Round holes are acceptable. Clean gravel and filter fabric around pipe will not be required around concrete storm sewer pipe.

PIPE CONNECTION DETAIL

©2016 MKEC Engineering All Rights Reserved www.mkec.com
 These drawings and their contents, including, but not limited to, all concepts, designs, & ideas are the exclusive property of MKEC Engineering (MKEC), and may not be used or reproduced in any way without the express consent of MKEC.

MISCELLANEOUS STORM SEWER DETAILS

PROJECT NO.	472-85213	
DATE	SEPT. 2016	
SCALE	NO SCALE	
DESIGNED	DRAWN	CHECKED
JRA	DSN	JRA

NO.	REVISION	DATE

SHEET NO.