

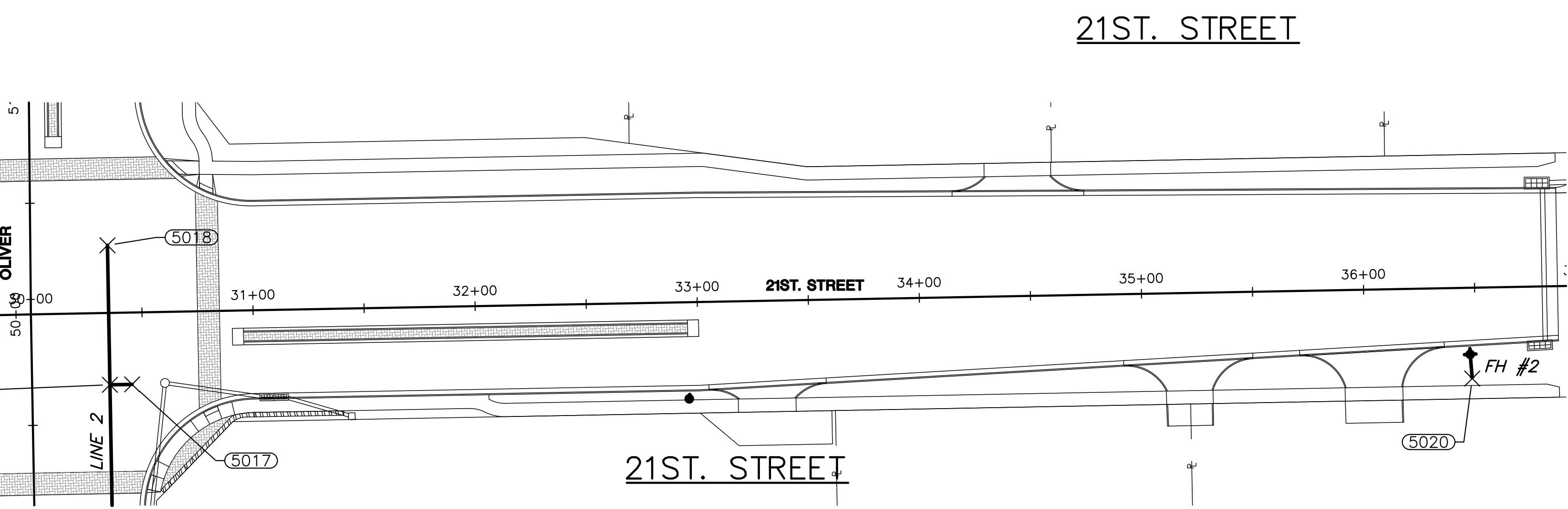
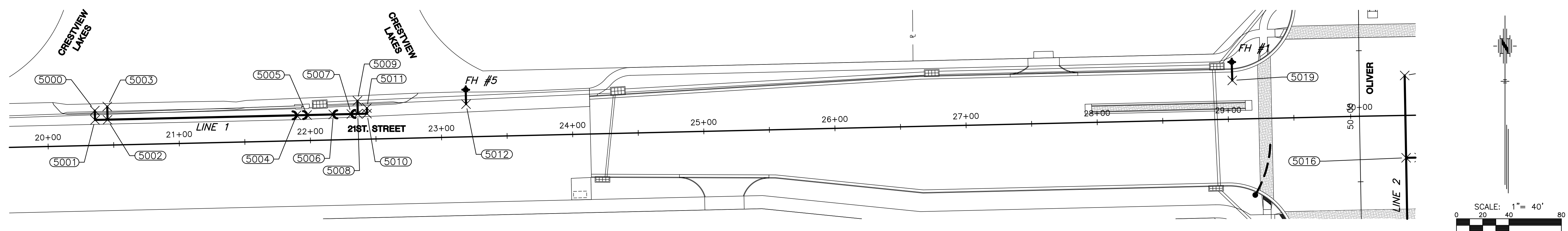
STREET IMPROVEMENTS FOR
21ST & OLIVER INTERSECTION
WICHITA, KANSAS

©2016 MKEC Engineering All Rights Reserved
www.mkec.com
These drawings and their contents, including, but not limited to, all concepts, designs, & ideas are the exclusive property of MKEC Engineering (MKEC), and may not be used or reproduced in any way without the express consent of MKEC.

WATER BUBBLE MAP

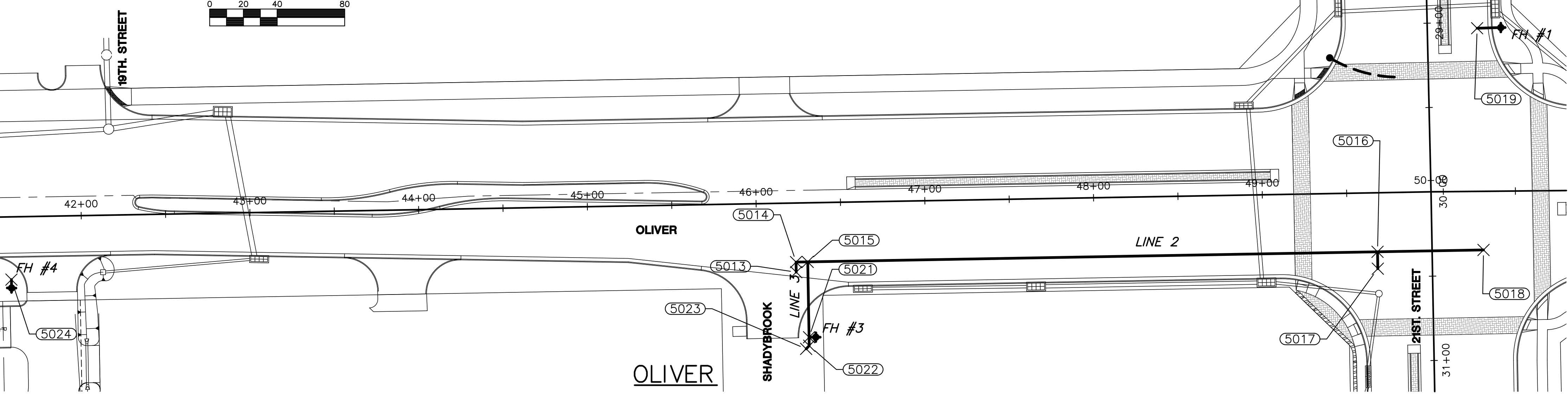
PROJECT NO.	472-85213	
DATE	SEPT. 2016	
SCALE	AS SHOWN	
DESIGNED	DRAWN	CHECKED
JTC	DM	JTC

#	---	###/###/###
NO.	REVISION	DATE



Point #	STATION	OFFSET	Northing	Easting	Desc.	WTR LINE
5000	20+36.20	26.55' Lt	1699456.72	1664218.77	12" TAPPING SLEEVE & VALVE	1
5001	20+36.20	19.43' Lt	1699449.60	1664218.94	12" 90° BEND	1
5002	20+45.69	19.33' Lt	1699449.72	1664228.43	12"x 8" TEE	1
5003	20+45.75	29.43' Lt	1699459.82	1664228.26	CONNECT TO EX.	1
5004	21+89.88	19.43' Lt	1699453.15	1664372.58	12" 22.5° BEND	1
5005	21+97.90	19.43' Lt	1699453.33	1664380.59	12" 22.5° BEND	1
5006	22+17.90	19.43' Lt	1699453.80	1664400.59	12" 22.5° BEND	1

Point #	STATION	OFFSET	Northing	Easting	Desc.	WTR LINE
5007	22+31.68	19.43' Lt	1699454.11	1664414.36	12" 22.5° BEND	1
5008	22+36.55	19.43' Lt	1699454.23	1664419.24	12"x 8" TEE	1
5009	22+36.55	29.43' Lt	1699464.22	1664419.00	CONNECT TO EX.	1
5010	22+43.61	19.43' Lt	1699454.39	1664426.30	90° BEND	1
5011	22+43.61	23.71' Lt	1699458.67	1664426.20	12" TAPPING SLEEVE & VALVE	1
5012	23+19.26	24.95' Lt	1699461.65	1664501.80	FH #5	FH 5
5013	46+23.06	40.98' Rt	1699076.26	1665230.55	12" TAPPING SLEEVE & VALVE	2
5014	46+23.06	35.00' Rt	1699076.15	1665224.58	12" 90° BEND	2
5015	46+29.98	35.00' Rt	1699083.07	1665224.46	12"x 8" TEE	2
5016	49+67.68	35.00' Rt	1699420.72	1665218.50	12"x 12" TEE	2
5017	49+67.68	45.01' Rt	1699420.90	1665228.50	CONNECT TO EX.	2
5018	50+30.78	34.75' Rt	1699483.53	1665217.39	12" TAPPING SLEEVE & VALVE	2
5019	29+03.67	29.55' Lt	1699479.74	1665085.95	FH #1	FH 1
5020	36+48.18	40.89' Rt	1699423.53	1665831.76	FH #2	FH 2
5021	46+29.98	79.69' Rt	1699083.86	1665269.14	FH #3	FH 3
5022	46+29.98	84.70' Rt	1699083.95	1665274.15	45° BEND	3
5023	46+28.13	86.54' Rt	1699082.14	1665276.02	45° BEND	3
5024	41+58.00	37.19' Rt	1698611.21	1665234.97	FH #4	FH 4



LEGEND
 PC—Point of Curve
 PCC—Point on Compound Curve
 RP—Radius Curve
 BC—Back of Curb
 EP—Edge of Pavement
 PT—Point on Tangent

J:\PROJECTS\2016\19104078_COW_21ST & OLIVER_XXXXXX CAD\SHS\05 CIVIL\CONTROL-BUBBLES\1762801.DWG
 PLOTTED: Thursday, September 22, 2016 @ 03:05PM