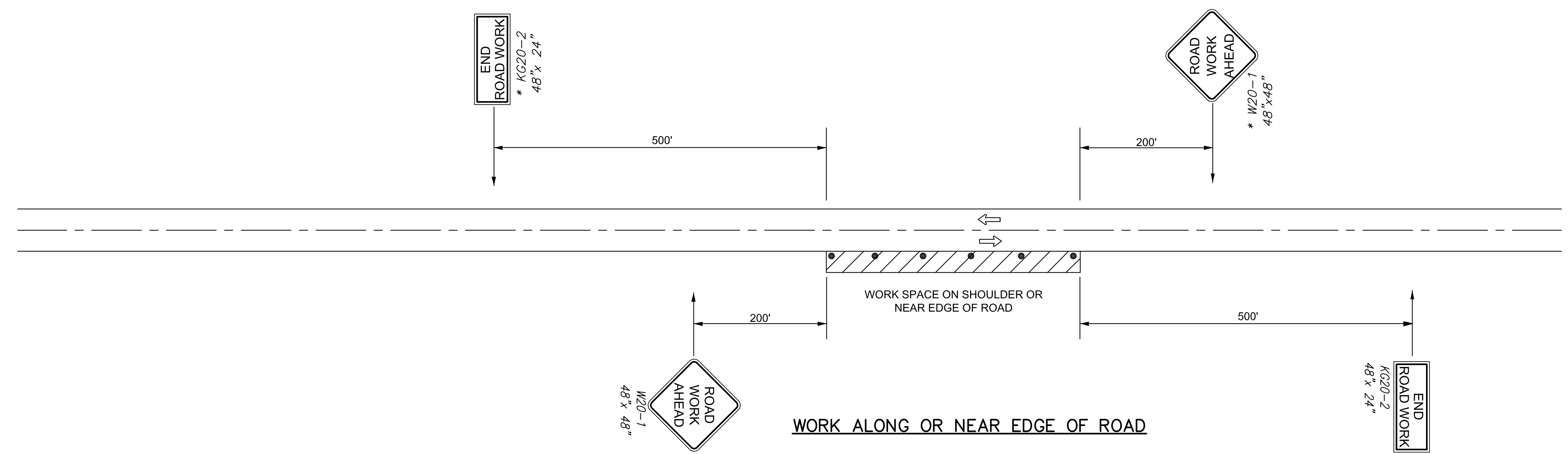


PLOTTED: Thursday, September 22, 2016 @ 03:11PM
 J:\PROJECTS\2016\19104078_COW_21ST & OLIVER_XXXXXX CAD\SHITS\05 CIVIL\TRAFFIC\151761E0D7.DWG

STREET IMPROVEMENTS FOR
21ST & OLIVER INTERSECTION
 WICHITA, KANSAS



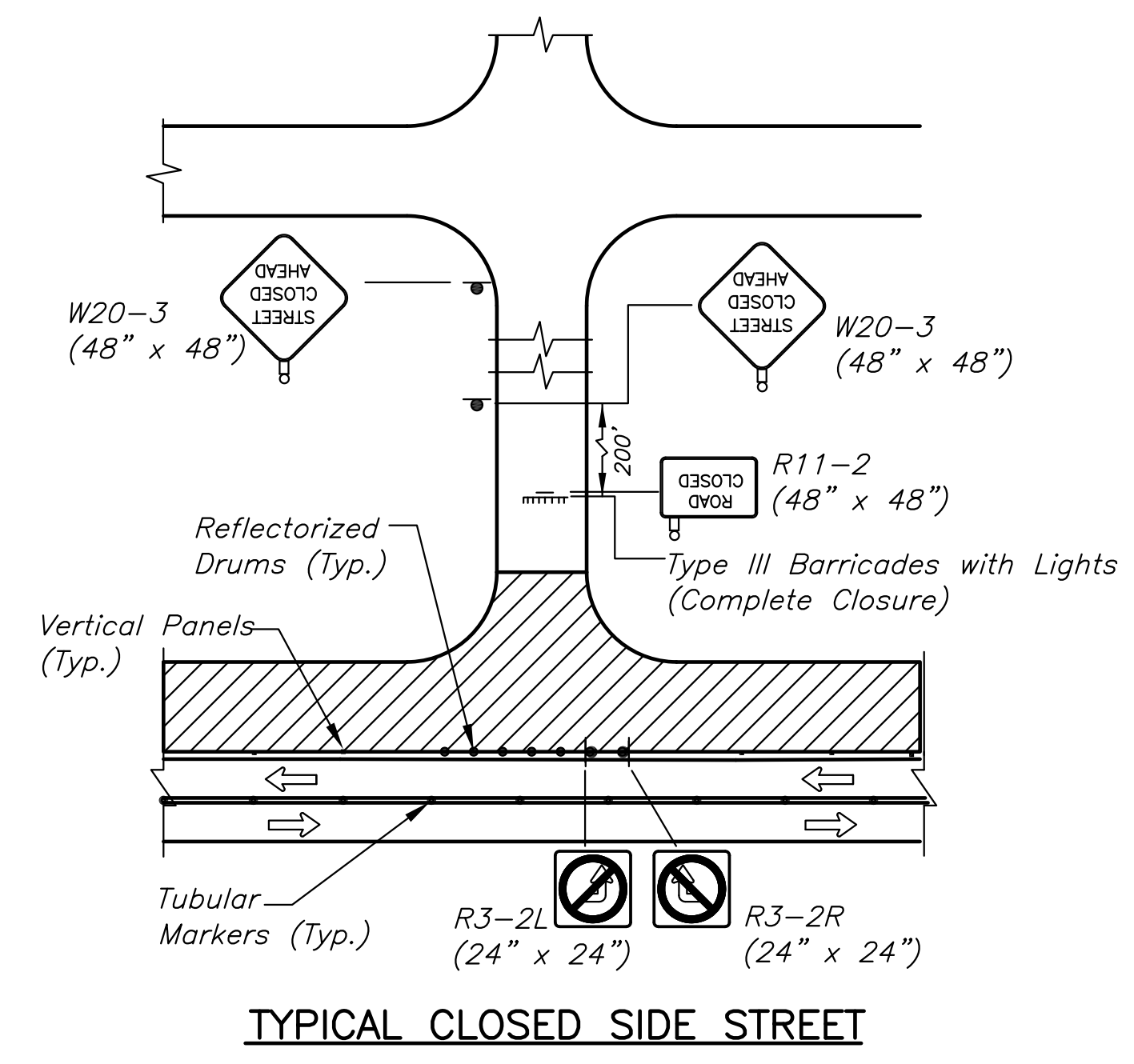
WORK ALONG OR NEAR EDGE OF ROAD

Temporary concrete barrier is to be used when open excavations are immediately adjacent to an open lane of traffic.

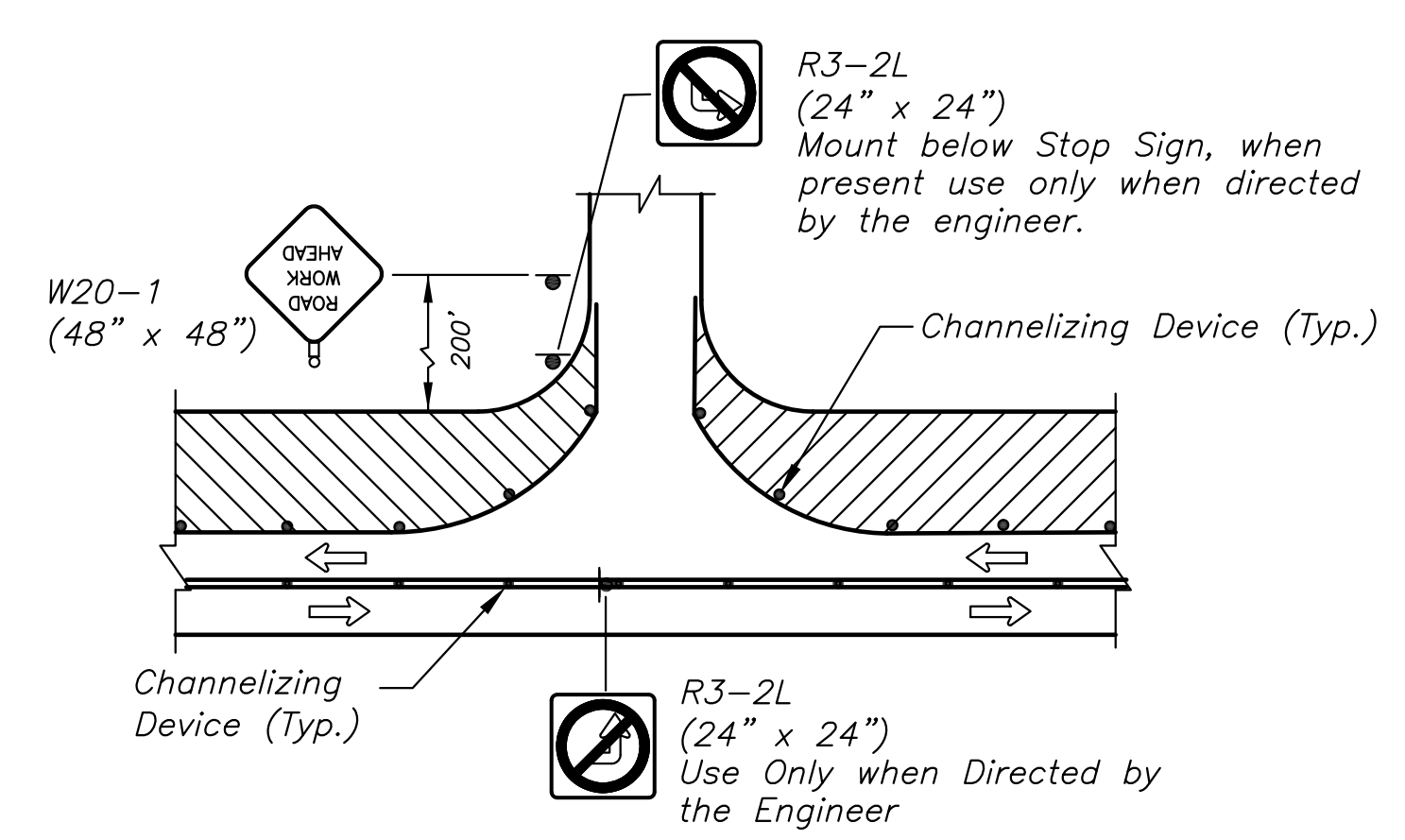
When work zone is 6' or more from back of curb, traffic controls is not necessary.

For operations of 60 minutes or less, all signs and channelizing devices may be eliminated if a vehicle with high-intensity, rotating, flashing, oscillating, or stroke lights is used.

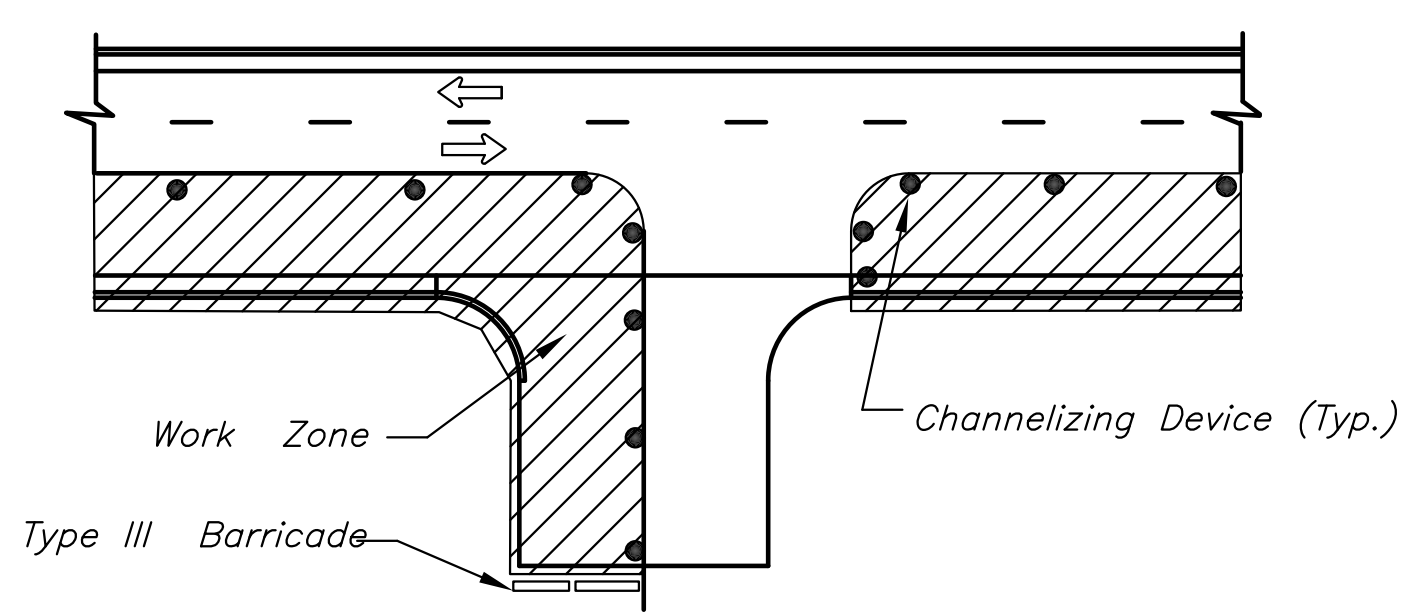
* Not Required on 4-lane or divided roadways.



TYPICAL CLOSED SIDE STREET



TYPICAL ENTRANCE AND SIDE STREET



TYPICAL DRIVEWAY ENTRANCE CONSTRUCTION

Maintain access to businesses at all times. If a single property has multiple entrances, one entrance at a time may be closed for construction.

Note:
4" Solid White Edge Lines Are Required Along Existing Curbs.

LEGEND

	Type III Barricades with lights
	Mount On Type III Barricade
	Type B Warning Light
	Sign
	Direction of Traffic
	Work Area
	Shoofly Detour
	Channelizer
	Mount Overhead on Signal Cross-arm
	Temporary Asphalt Widening

©2016 MKEC Engineering All Rights Reserved
 www.mkec.com
 These drawings and their contents, including, but not limited to, all concepts, designs, & ideas are the exclusive property of MKEC Engineering (MKEC), and may not be used or reproduced in any way without the express consent of MKEC.

TYPICAL TRAFFIC CONTROL DETAILS

PROJECT NO.	472-85213	
DATE	SEPT. 2016	
SCALE	AS SHOWN	
DESIGNED	DRAWN	CHECKED
JRA	LES	JRA
NO.	REVISION	DATE
SHEET NO.		
96 OF 125		