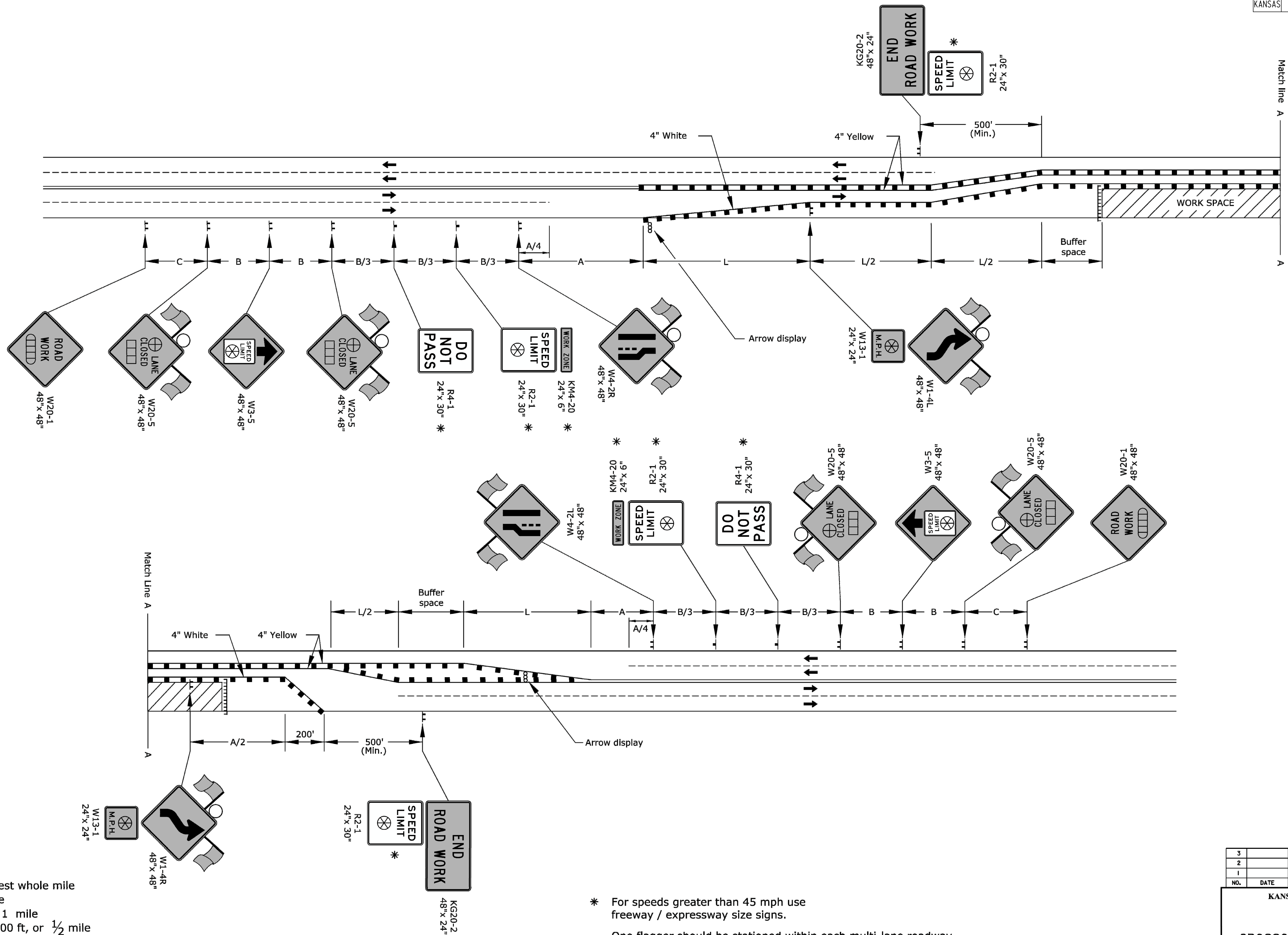


STATE	PROJECT NO.	YEAR	SHEET NO.	TOTAL SHEETS
KANSAS	472-85213	2016	102	125



- ||| Type 3 barricades
- X Length to the nearest whole mile
- Channelizing device
- ⊞ Ahead, 1500 ft, or 1 mile
- ⊞ Ahead, 1000 ft, 1500 ft, or 1/2 mile
- ⊕ Right or left
- ⊗ Speed to be determined by the Engineer
- Type "A" low intensity warning light

\* For speeds greater than 45 mph use freeway / expressway size signs.

One flagger should be stationed within each multi-lane roadway activity area where work is in a closed lane adjacent to traffic and not separated by a concrete safety barrier system.

3				
2				
1				
NO.	DATE	REVISIONS	BY	APP'D

KANSAS DEPARTMENT OF TRANSPORTATION

**TRAFFIC CONTROL  
CROSSOVER ON UNDIVIDED ROADWAY**

TE748

DESIGNED	B.A.H.	APP'D	Kristina Ericksen
DESIGN CK.	DETAIL CK.	QUAN. CK.	TRACE CK.

KDOT Graphics Certified 06-01-2015 Sh. No. 102

PROJECTS\2016\161040787\_COW\_2121 & OLIVER\_XXXXXX CAD\SHITS\05 CIVIL\TRAFFIC\161040787\TE005.DWG  
 PLOTTED: Friday, September 16, 2016 10:23:00 AM