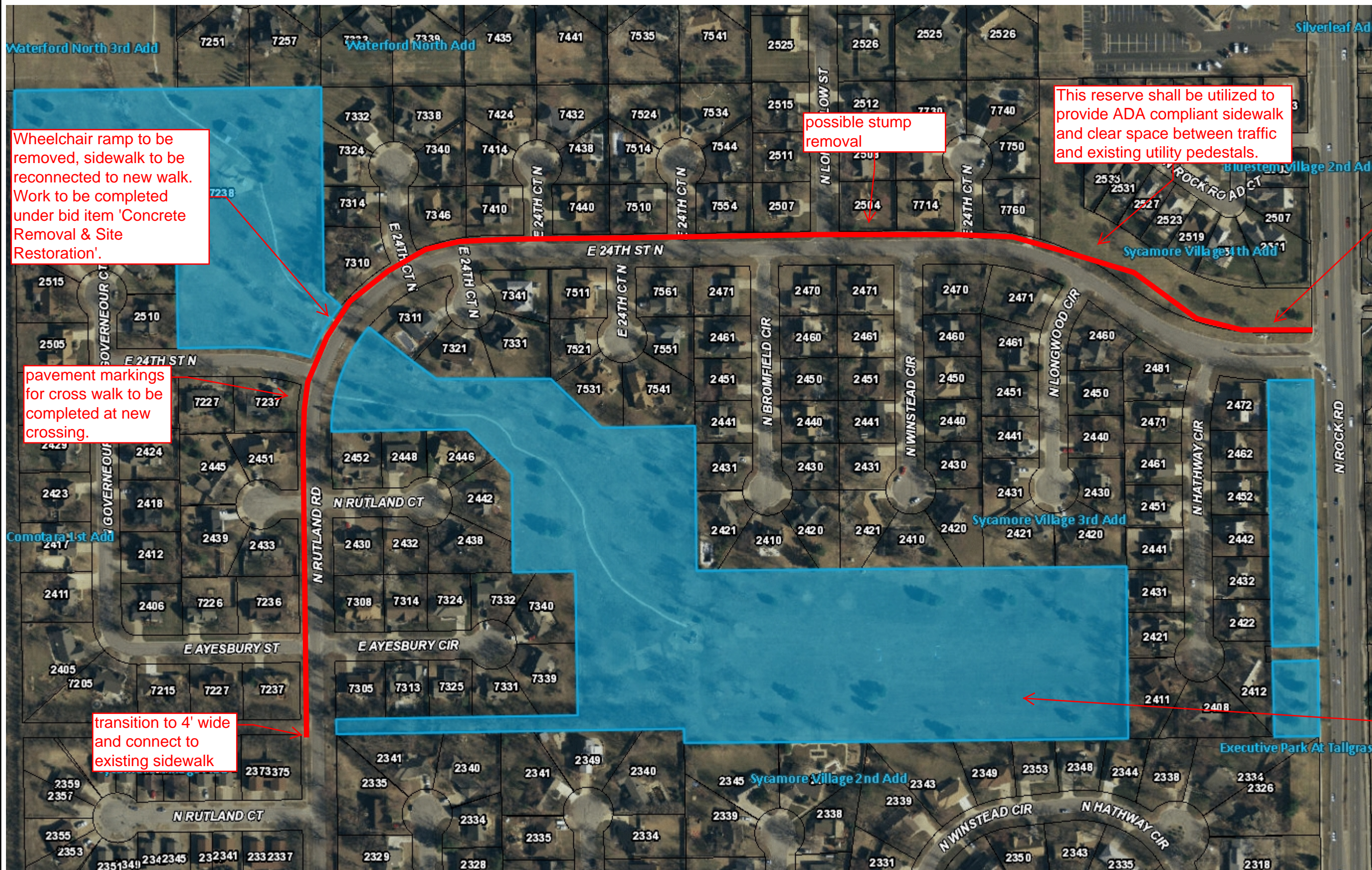
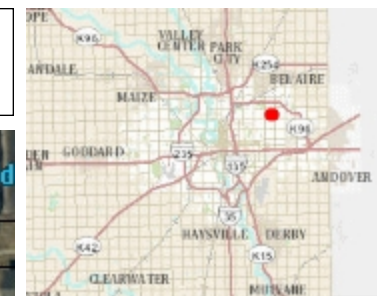




# Sycamore Village Sidewalk



Wheelchair ramp to be removed, sidewalk to be reconnected to new walk. Work to be completed under bid item 'Concrete Removal & Site Restoration'.

pavement markings for cross walk to be completed at new crossing.

transition to 4' wide and connect to existing sidewalk

possible stump removal

This reserve shall be utilized to provide ADA compliant sidewalk and clear space between traffic and existing utility pedestals.

Proposed 2447' (approximate) of 5' Sidewalk

Wheelchair ramps at each intersection/ street crossing and for new cross walk = 17 total.

Proposed improvement district area

Legend  
□ Parcels

0.1 0 0.04 0.1 Miles

1: 2,300

Map Created On: 6/20/16 1:59 PM



This information is not an official record, and cannot be used as such. The user should rely only upon official records available from the custodian of records in the appropriate City and/or County department. Some data provided here and used for the preparation of these maps has been obtained from public records not created or maintained by the City of Wichita.