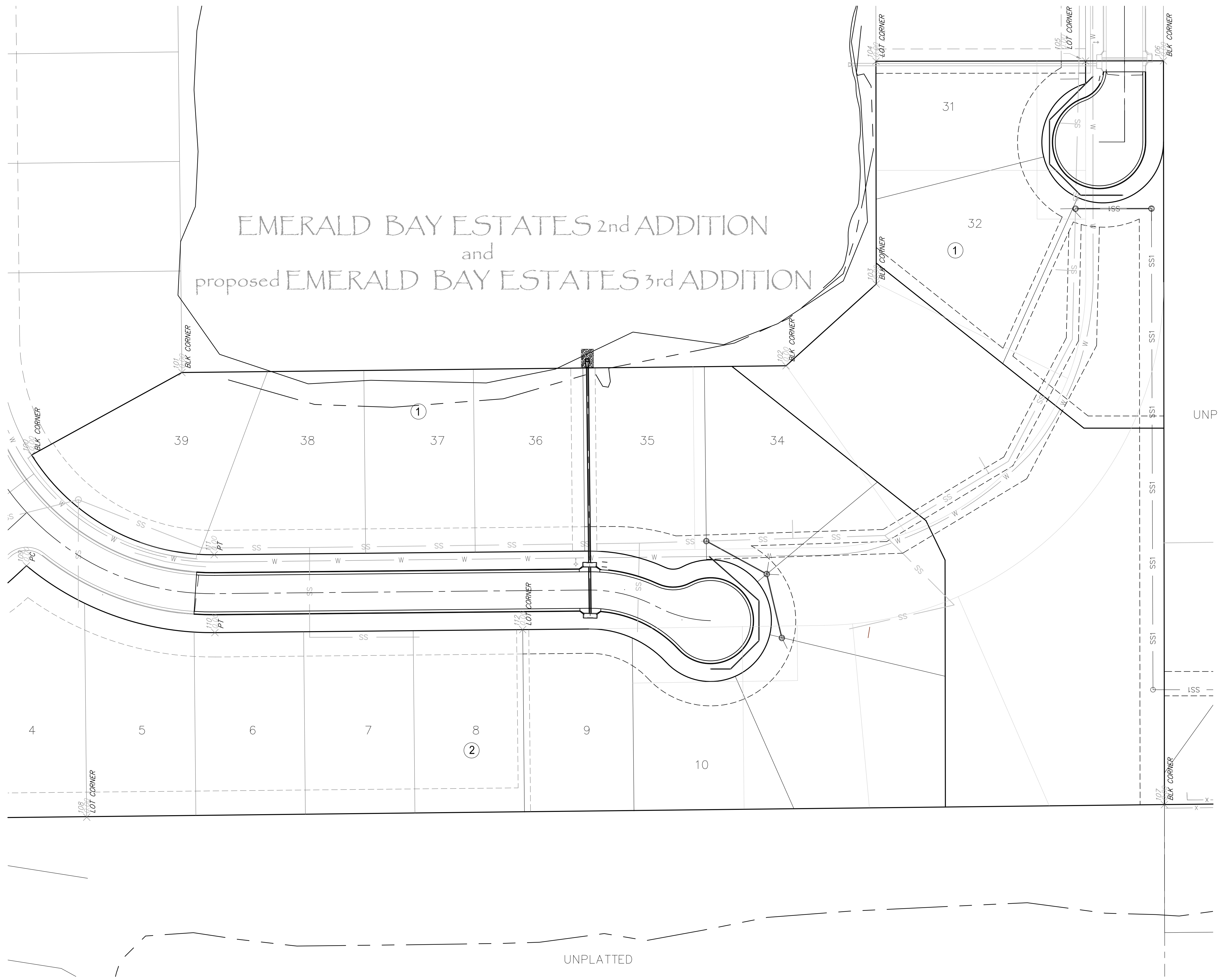
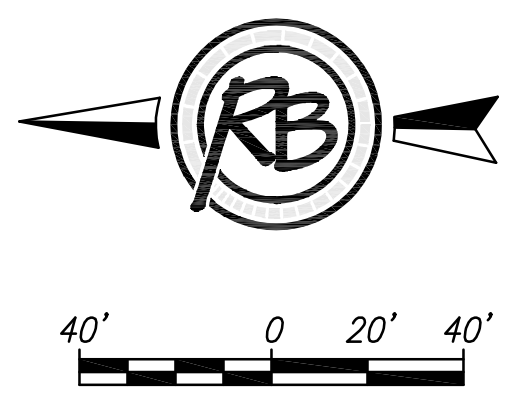


EMERALD BAY ESTATES 2nd ADDITION
and
proposed EMERALD BAY ESTATES 3rd ADDITION



UNPLATTED

UNPLATTED

Point Table			
Point #	Northing	Easting	Description
100	1701411.53	1631260.46	BLK CORNER
101	1701288.04	1631328.23	BLK CORNER
102	1700791.67	1631333.78	BLK CORNER
103	1700717.56	1631400.91	BLK CORNER
104	1700717.80	1631584.01	LOT CORNER
105	1700545.58	1631584.24	LOT CORNER
106	1700481.58	1631584.33	BLK CORNER
107	1700480.77	1630973.23	BLK CORNER
108	1701366.28	1630962.86	LOT CORNER
109	1701415.76	1631169.44	PC
110	1701260.92	1631114.52	PT
111	1701261.56	1631178.51	PT
112	1701008.06	1631116.99	LOT CORNER

EMERALD BAY ESTATES 2 nd PAVING Bubble Map			
SEAL	RUGGLES & BOHM <small>ENGINEERING SURVEYING LANDSCAPE ARCHITECTURE GOVERNMENT</small> <small>924 NORTH MAIN WICHITA, KANSAS 67203 P (316) 264-8008 F (316) 264-4621 WWW.RBKANSAS.COM</small>	DATE	...
		DESIGN	...
PROJECT NUMBER 472-85311	RB JOB NO. 4770E	DWG. SCALE	...
		DRAWING FILE	Emerald Bay engineering base [Bubble Map]
			SHEET
			18
			CF
			19

(c) Copyright 2015, Ruggles & Bohm, P.A.