

EMERALD BAY ESTATES SECOND ADDITION

Wichita, Sedgwick County, Kansas



1" = 100'

BLOCK	LOT NO.'S	ELEVATION (M.C.V.D.)
1	1 - 56	1321.0

CH = Chord
M = Measured
C = Calculated
(A) = Assumed

SURVEY MARKER LEGEND

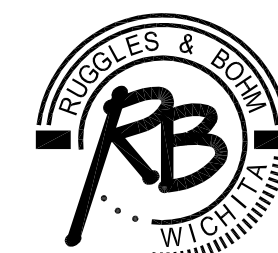
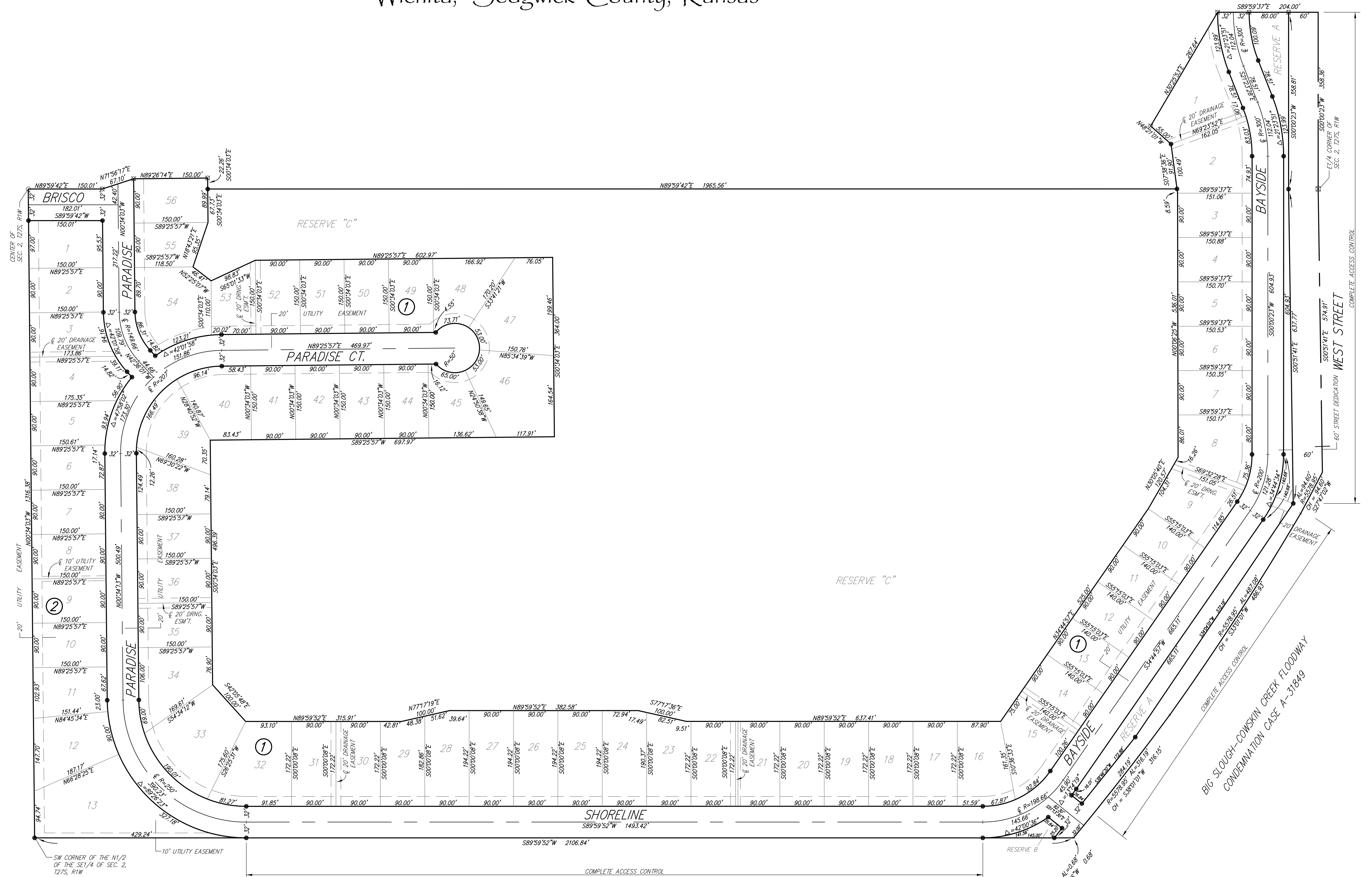
- 1/2" IRON PIPE
- ⊠ RAILROAD SPIKE
- ⊞ 5"x5" CONCRETE MONUMENT WITH A 5/8" REBAR
- ⊞ 5/8" REBAR W/RUGGLES & BOHM CAP (FOUND)
- 5/8" REBAR W/RUGGLES & BOHM CAP (SET)

BENCH MARK: CITY OF WICHITA BRASS DISK ON THE NORTHWEST CORNER OF A R.C.B.C. 0.75 MILES EAST OF HOOVER ON 21ST ST. NORTH ELEVATION = 1321.62 (NGVD29)

BENCH MARK: CITY OF WICHITA BRASS DISK TOP OF HEADWALL OF R.C.B.C. UNDER WEST STREET, NORTH OF 29TH ST. NORTH ON EAST SIDE OF WEST ST. ELEVATION = 1321.80 (NGVD29)

BENCH MARK: CITY OF WICHITA BRASS DISK AT THE NORTHWEST CORNER OF HOOVER AND 21ST ST. NORTH ELEVATION = 1326.47 (NGVD29)

BENCH MARK: CITY OF WICHITA BRASS DISK AT THE SOUTHWEST CORNER OF HOOVER AND 29TH ST. NORTH ELEVATION = 1330.16 (NGVD29)



Ruggles & Bohm, P.A.
Engineering, Surveying, Land Planning
924 North Main (316) 264-8008
Wichita, Kansas 67203 (316) 264-4621 fax
www.rbkansas.com E-mail: info@rbkansas.com

DWG FILE: SURVEY BASE
PROJECT NO. 3322P
DECEMBER 3, 2008