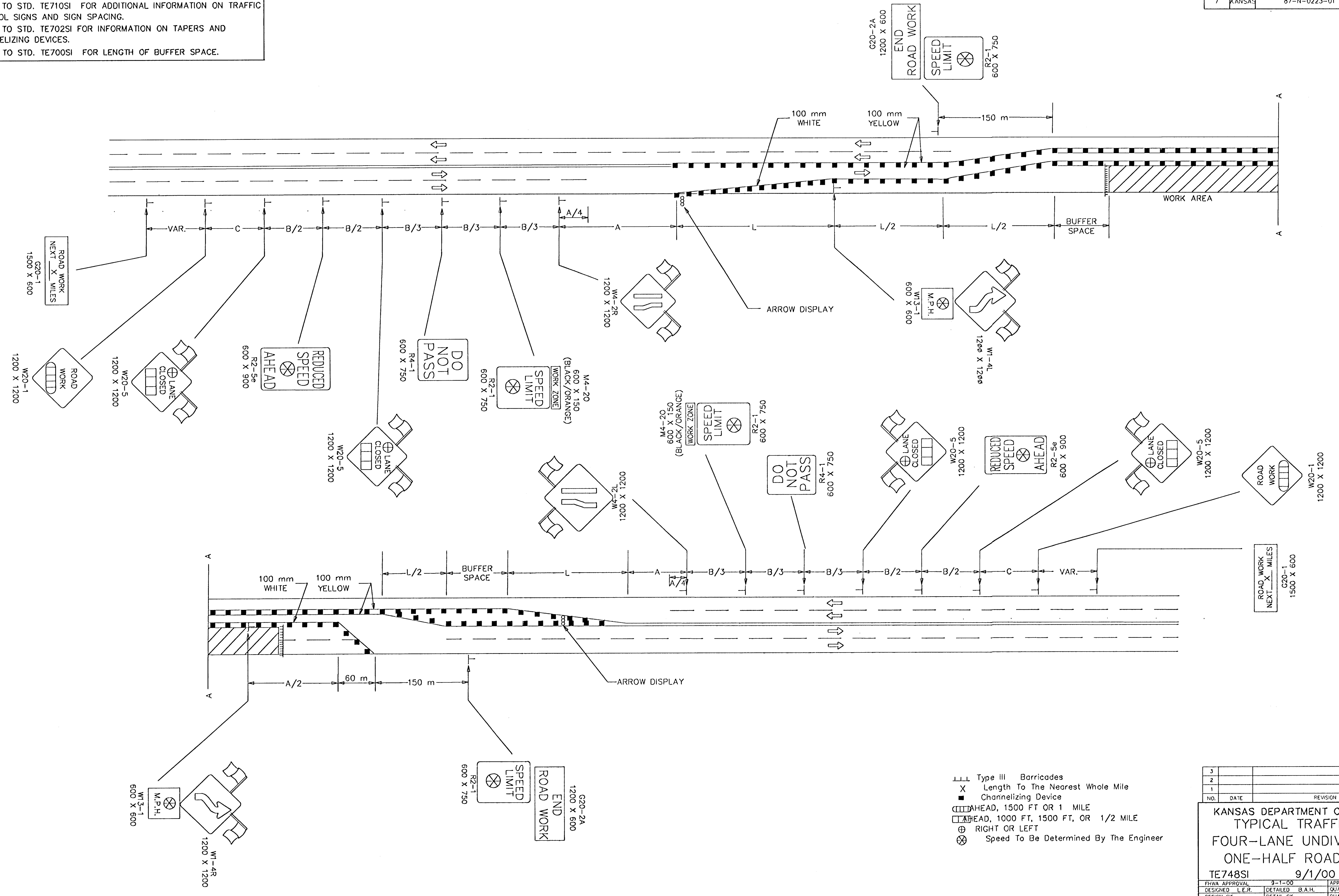


FHWA REGION NO.	STATE	PROJECT NO.	YEAR	SHEET NO.	TOTAL SHEETS
7	KANSAS	87-N-0223-01	2002	37	56

REFER TO STD. TE710SI FOR ADDITIONAL INFORMATION ON TRAFFIC CONTROL SIGNS AND SIGN SPACING.  
REFER TO STD. TE702SI FOR INFORMATION ON TAPERS AND CHANNELIZING DEVICES.  
REFER TO STD. TE700SI FOR LENGTH OF BUFFER SPACE.



- LLL Type III Barricades
- X Length To The Nearest Whole Mile
- Channelizing Device
- AHEAD, 1500 FT OR 1 MILE
- AHEAD, 1000 FT, 1500 FT, OR 1/2 MILE
- ⊕ RIGHT OR LEFT
- ⊗ Speed To Be Determined By The Engineer

3					
2					
1					
NO.	DATE	REVISION	BY	APP'D	
<b>KANSAS DEPARTMENT OF TRANSPORTATION</b> <b>TYPICAL TRAFFIC CONTROL</b> <b>FOUR-LANE UNDIVIDED HIGHWAY</b> <b>ONE-HALF ROADWAY CLOSED</b> <b>TE748SI 9/1/00 SHEET 37 OF 56</b>					
DESIGNED	L.E.R.	APP'D	Michael P. McKenna	QUANTITIES	TRACED
DESIGN CK.	DETAIL CK.	QUAN. CK.	TRACE CK.		