

GENERAL NOTES

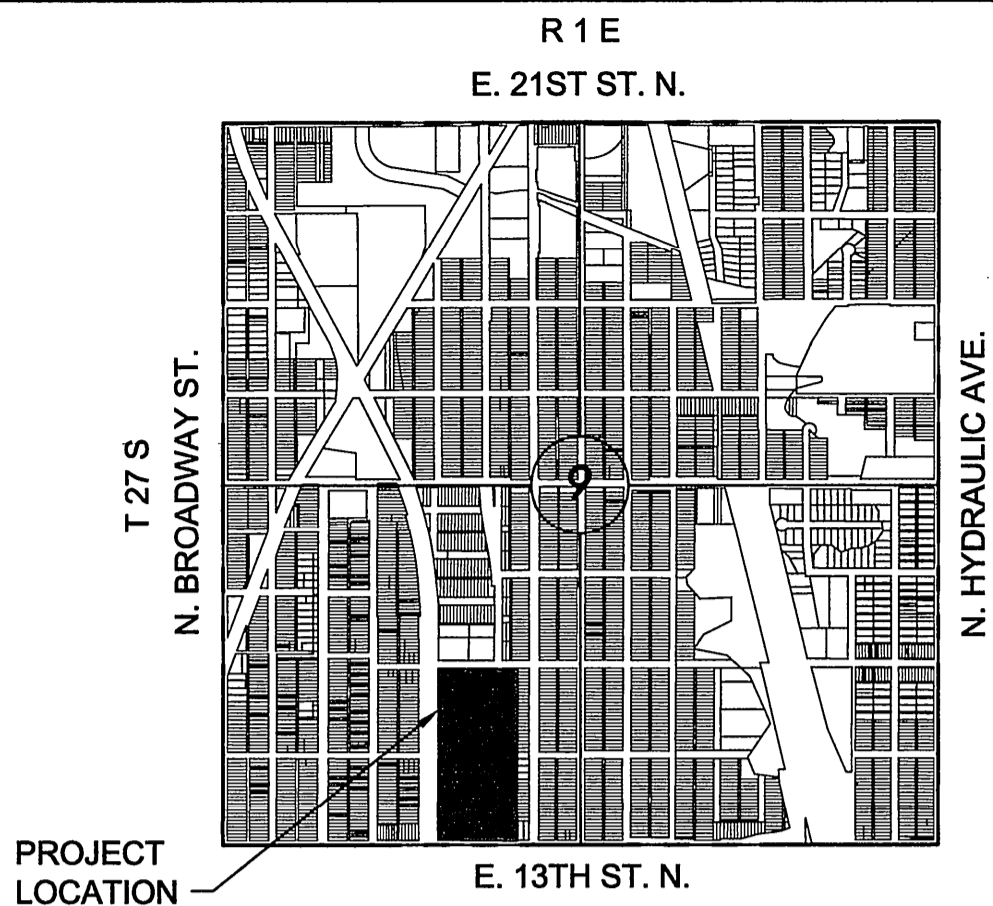
- THE CONTRACTOR SHALL COMPLY WITH ALL APPLICABLE SAFETY REGULATIONS. ALL CONSTRUCTION SHALL BE COMPLETED FOLLOWING CURRENT CITY STANDARD SPECIFICATIONS AND SPECIAL PROVISIONS.
- THE CONTRACTOR WILL BE REQUIRED TO PROVIDE NOTICE TO UTILITY COMPANIES A MINIMUM OF SEVENTY-TWO (72) HOURS PRIOR TO ANY EXCAVATION, AS FOLLOWS:
KANSAS ONE-CALL 687-2470
THE CONTRACTOR MUST NOTIFY THE FOLLOWING IN CASE OF AN EMERGENCY:

AT&T	1-800-246-8464
BLACK HILLS ENERGY (GAS)	1-800-694-8989
CITY OF WICHITA WATER	1-316-268-4555
CITY OF WICHITA SEWER	1-316-268-4073
CITY OF WICHITA STORMWATER	1-316-268-4080
CITY OF WICHITA TRAFFIC	1-316-268-4034
COX COMMUNICATIONS	1-888-249-3530
KANSAS GAS SERVICE	1-888-462-4850
WESTAR ENERGY	1-800-544-4857
- UTILITY SERVICE LINES, POLES, ETC. ARE TO BE ADJUSTED AS NECESSARY BY OTHERS PRIOR TO CONSTRUCTION UNLESS THE PLANS SPECIFICALLY CALL FOR THEIR ADJUSTMENT BY ITS OWNER DURING CONSTRUCTION. EXISTING UTILITIES AND THEIR LOCATION, AS SHOWN ON THE PLAN, REPRESENT THE BEST INFORMATION OBTAINABLE FOR DESIGN. THE CONTRACTOR WILL BE REQUIRED TO WORK AROUND EXISTING UTILITIES WITHIN THE RIGHT-OF-WAY WHICH DO NOT CONFLICT WITH PROPOSED CONSTRUCTION.
- RUBBLE FROM THE REMOVAL OF MISCELLANEOUS STRUCTURES AND EXCESS EXCAVATION WHICH IS TO BE WASTED SHALL BE DISPOSED OF ON SITES TO BE PROVIDED BY THE CONTRACTOR. THESE SITES SHALL BE APPROVED BY THE ENGINEER AS TO SUITABILITY, APPEARANCE AND SITE LOCATION. LOCATIONS, IN THE OPINION OF THE ENGINEER, THAT WILL LEAVE AN UNSIGHTLY APPEARANCE WILL NOT BE APPROVED. ALL DISPOSAL SITES MUST BE APPROVED BY THE KANSAS DEPARTMENT OF HEALTH AND ENVIRONMENT. MATERIAL EITHER STOCKPILED OR DISPOSED OF IN A FLOOD PLAIN WOULD REQUIRE A KANSAS STATE BOARD OF AGRICULTURE PERMIT. ANY MATERIAL DUMPED IN WATERS OF THE UNITED STATES OR WETLANDS IS SUBJECT TO U.S. CORPS OF ENGINEERS PERMITTING REGULATIONS. ANY MATERIAL BURIED OR STOCKPILED BEYOND APPROVED CONSTRUCTION LIMITS WOULD REQUIRE ADDITIONAL ARCHAEOLOGICAL INVESTIGATIONS UNLESS BURIED IN A PREVIOUSLY APPROVED BORROW LOCATION.
- TREES AND SHRUBS IN PUBLIC RIGHT-OF-WAY WHICH ARE IN DIRECT CONFLICT WITH PROPOSED NEW CONSTRUCTION SHALL BE REMOVED BY THE CONTRACTOR WITH THE ENGINEER'S APPROVAL. TREES AND SHRUBS WHICH ARE NOT IN DIRECT CONFLICT WITH PROPOSED NEW CONSTRUCTION SHALL BE SAVED AND PROTECTED FROM DAMAGE.
- THE CONTRACTOR SHALL GIVE ALL PROPERTY OWNERS AND/OR TENANTS OF DEVELOPED PROPERTY ABUTTING THE CONSTRUCTION OF THIS PROJECT A MINIMUM OF TEN (10) DAYS NOTICE PRIOR TO START OF CONSTRUCTION.
- THE CONTRACTOR SHALL BE RESPONSIBLE FOR PRESERVING PROPERTY IRONS. THE CONTRACTOR WILL BE REQUIRED TO RE-ESTABLISH ANY PROPERTY IRONS WHICH ARE DAMAGED OR DESTROYED BY HIS CONSTRUCTION OPERATIONS. SUCH IRONS SHALL BE RE-ESTABLISHED BY A LICENSED LAND SURVEYOR IN ACCORDANCE WITH STATE LAWS.
- THE WATER DISTRIBUTION DIVISION SHALL FIELD LOCATE WATER VALVES ONE TIME DURING CONSTRUCTION WHEN REQUESTED BY THE CONTRACTOR. IT SHALL BE THE CONTRACTOR'S RESPONSIBILITY TO PRESERVE SUCH FIELD LOCATIONS DURING THE CONSTRUCTION PROCESS. WATER VALVES, VALVE BOXES OR FIRE HYDRANTS DAMAGED DURING CONSTRUCTION SHALL BE REPAIRED BY CONTRACTOR AT HIS OWN EXPENSE. VALVE BOXES AND WATER METERS WITHIN THE PROJECT LIMITS SHALL BE ADJUSTED TO MATCH FIELD GRADES.
- THE CONTRACTOR SHALL NOTIFY THE CONSULTANT ENGINEER AND TOM MASON WITH THE CITY AT 316-268-4574 WITH THE ANTICIPATED CONSTRUCTION START DATE AND NOTIFY THEM OF PROJECT COMPLETION. STAKING AND INSPECTION FOR THIS PROJECT WILL BE THE RESPONSIBILITY OF THE CONTRACTOR.
- IF TRAFFIC WILL BE IMPACTED BY CONSTRUCTION, A TRAFFIC CONTROL PLAN MUST BE SUBMITTED AND APPROVED BY THE CITY TRAFFIC ENGINEER, BRIAN COON AT TRAFFIC@WICHITA.GOV BEFORE CONSTRUCTION CAN BEGIN. THE CONTRACTOR SHALL BE RESPONSIBLE FOR ALL TRAFFIC CONTROL MEASURES TO FACILITATE CONSTRUCTION. ALL CONSTRUCTION ZONE MARKINGS AND SIGNAGE SHALL CONFORM TO THE LATEST VERSION OF THE MANUAL ON UNIFORM TRAFFIC CONTROL DEVICES (MUTCD) AS PUBLISHED BY THE US DEPT. OF TRANSPORTATION, FEDERAL HIGHWAY ADMINISTRATION. ALL COSTS ASSOCIATED WITH CONSTRUCTION MARKINGS AND SIGNAGE SHALL BE THE CONTRACTOR'S RESPONSIBILITY.
- ALL ELEVATIONS SHOWN ARE CARGILL DATUM. (CARGILL DATUM + 1188.2= NAVD 88)
- ALL AREAS DISTURBED DURING CONSTRUCTION THAT WILL NOT BE UNDER PROPOSED PAVEMENT SHALL BE RESTORED TO MATCH EXISTING CONDITIONS.
- FOLLOW THE LINK BELOW FOR SPECIFIC EROSION CONTROL CITY OF WICHITA STANDARD DETAILS:
<http://www.wichita.gov/government/departments/pwu/standardsconstruction>
- CONTRACTOR SHALL LIMIT THE EXTENT OF TRENCH OPEN OVERNIGHT AND WEEKENDS TO LESS THAN 50 FEET.
- EXISTING UTILITIES AND THEIR LOCATION, AS SHOWN ON THE PLANS REPRESENT THE BEST INFORMATION OBTAINABLE FOR DESIGN. LOCATION INFORMATION HAS BEEN OBTAINED FROM THE VARIOUS COMPANIES AND IS EITHER FROM COMPANY UTILITY DRAWINGS OR COMPANY PROVIDED FIELD LOCATIONS. THE PLAN LOCATIONS SHOWN ARE NOT GUARANTEED. ADDITIONAL EXISTING UTILITIES MAY ALSO BE ENCOUNTERED.
- A PORTION OF EXCESS EXCAVATED MATERIAL SHALL BE MOUNDING AROUND MANHOLES WHICH EXTEND MORE THAN ONE (1) FOOT ABOVE THE EXISTING GROUND. SUCH MOUND SHALL BE CONSTRUCTED WITH NEW DEVELOPMENT A SIX (6) FOOT DIAMETER FLAT TOP WITH 4 TO 1 SIDES SLOPES DOWN TO THE ORIGINAL GROUND. THE ELEVATION OF THE FLAT TOP OF THE MOUND SHALL BE 0.4 FOOT BELOW THE TOP OF THE MANHOLE.
- CONTRACTOR SHALL PROVIDE POSITIVE DRAINAGE AWAY FROM ALL MANHOLE COVERS, UNLESS THEY ARE PROPOSED AS INLETS AND FITTED WITH GRATES.
- CITY MAINTENANCE OF STORM SEWER ENDS AT THE 13TH STREET RIGHT-OF-WAY OR EASEMENT LINE.
- THE INSPECTING FIRM SHALL SUBMIT TO THE CITY STORMWATER MAINTENANCE DIVISION A DIGITAL COPY OF THE CCTV INSPECTION OF THE CONDUITS AND STRUCTURES FOLLOWING CONSTRUCTION. THE DIGITAL FILE FORMATION SHALL BE COMPATIBLE WITH THE CITY INPUT TEMPLATE. A COPY OF THE TEMPLATE IS AVAILABLE UPON REQUEST AT 316-268-4090.
- WORK DONE UNDER THIS PROJECT IS SUBJECT TO THE CITY OF WICHITA REQUIREMENTS FOR "CONSTRUCTION OF INFRASTRUCTURE IMPROVEMENTS BY PRIVATE CONTRACT". THE CONTRACTOR SHALL BE FAMILIAR AND COMPLY WITH ALL OF THE REQUIREMENTS, INCLUDING BONDING, INSPECTION, TESTING, NOTIFICATION, PROVIDING AS-BUILT DRAWINGS, PAYING FOR ALL NECESSARY CONNECTIONS, AND/OR STREET REPAIR FEES AND PROVIDING PIPE MATERIAL AND OTHER CERTIFICATIONS.
- PROPOSED STORM SEWER PIPE SHALL DUCTILE IRON PIPE AND CONFORM TO SECTION 804.2(F) OF THE CITY OF WICHITA STANDARD SPECIFICATIONS AND SPECIAL PROVISIONS FOR THE CONSTRUCTION OF PUBLIC PROJECTS.
- DUCTILE IRON PIPE AND STORM SEWER INLET AND MANHOLE INSTALLATION SHALL CONFORM TO SECTION 801 OF THE CITY OF WICHITA STANDARD SPECIFICATIONS AND SPECIAL PROVISIONS FOR THE CONSTRUCTION OF PUBLIC PROJECTS.
- STORM SEWER MARKER POSTS INSTALLED AT THE END OF THE 8" DUCTILE IRON PIPE STUBS SHALL BE RHINO FIBERCURVE OR APPROVED EQUAL. THE SOIL EMBEDMENT DEPTH SHALL BE PER THE MANUFACTURER'S RECOMMENDATION. MARKER POSTS SHALL BE GREEN IN COLOR.
- CONTRACTOR SHALL LOCATE THE EXISTING CORRUGATED METAL PIPE (CMP) NEAR THE TERMINATING END OF EACH OF THE 8" DUCTILE IRON PIPE STUBS PRIOR TO INSTALLATION OF THE PROPOSED 18" DUCTILE IRON PIPE MAIN.
- THE INTENT OF THESE PIPE STUBS IS TO EXTEND PIPE UNDER THE PROPOSED VAPOR WALL. CONTRACTOR SHALL CONTACT THE OWNER AND THE ENGINEER IF CONFLICTS ARE ENCOUNTERED THAT PREVENT THE STUB FROM OCCURRING. IF THE EXISTING CMP IS ENCOUNTERED AND IT CONFLICTS WITH THE PLANNED TERMINATION POINT OF A 8" DUCTILE IRON PIPE STUBS, THEN THE STUB SHALL TERMINATE AS CLOSE TO THE CMP AS POSSIBLE.
- A FUTURE PHASE OF STORM SEWER INLET INSTALLATIONS WITHIN THE TRACKS WILL CONNECT TO THE 8" DUCTILE IRON STUBS. ONLY AT THIS TIME CAN THE EXISTING CORRUGATED METAL STORM SEWER PIPE BE ABANDONED IN PLACE.
- ALL CONCRETE DISTURBED DURING STORM SEWER PIPE INSTALLATION SHALL BE REPLACED. COST SHALL BE SUBSIDIARY TO THE PROJECT.
- SEDIMENT BARRIERS SHALL BE PROVIDED ON ALL EXISTING AND NEW INLETS.
- DEVELOPER FOR THIS PROJECT IS:
CARGILL, INC.
1401 N. MOSLEY
WICHITA, KS 67214
ROB BOARDMAN
(316) 263-1910

PROPOSED IMPERVIOUS=2.8 AC.
PROPOSED PERVIOUS=0.0 AC.
WQ_v=0.08 AC.-FT.
CR_v = N/A

PRIVATE STORM WATER SEWER TO SERVE MEAD ST. CORRIDOR

1401 N. MOSLEY
WICHITA, KS 67214
PROJECT NO. 0405PPD
THE CITY OF WICHITA, KANSAS
GARY JANZEN, P.E. - CITY ENGINEER
OCA NO. 607861



VICINITY MAP

No Scale

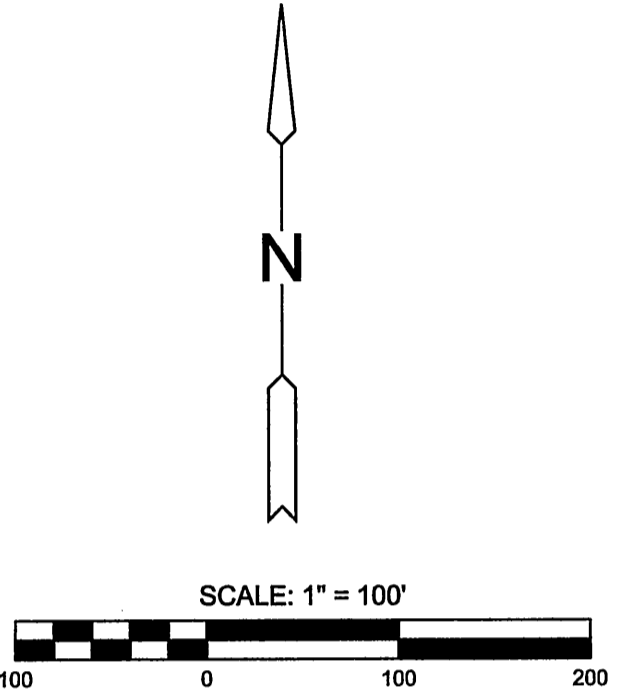
INDEX TO DRAWINGS

SHEET NO.	DESCRIPTION
1	TITLE SHEET
2-4	STORM WATER DETAILS
5	SWWS LINE 1 PLAN & PROFILE

SEE SEDGWICK CO. GIS WEBSITE
<https://gismaps.sedgwickcounty.org/portal/>
TO DOWNLOAD THE FOLLOWING PLATS:

PARMENTERS 2ND ADD.
MILLS 2ND ADD.
GLAZE'S ADD.
GLAZE & JOCELYN'S ADD.
GLAZE & JOCELYN'S 2ND ADD.

SEE GENERAL NOTE #13 FOR CITY OF WICHITA STANDARD BMP LINK



AS-BUILT PLANS
CONTRACTOR: DONDLINGER CONSTRUCTION
SUPERINTENDENT: BILL BUDD
INSPECTED BY: JACOB MORRIS, SCHWAB EATON
PDF BY: JCM, 11/30/16

BENCHMARKS & CONTROL POINTS

CONTROL:	HORIZONTAL	NORTH	EAST	ELEV.	DESCRIPTION
104	1694086.911	1651182.949	116.788	PK NAIL W/ MKEC ID WASHER	
111	1695145.160	1651134.046	117.250	5/8" REBAR W/ RED MKEC DESIGN PT. ID CAP	
202	1694398.529	1651143.572	117.770	CHISELED "X"	
206	1694481.236	1651184.428	116.876	PK NAIL	
207	1694630.258	1651139.866	116.007	CHISELED "X"	
208	1694866.644	1651170.628	115.701	PK NAIL	

BM 1- CHISELED SQUARE ON PIPE RACK FOOTING, NEAR THE SOUTHEAST CORNER OF TANK CONTAINMENT AREA, SOUTH END OF LOADING RACK ALONG RAILROAD TRACKS
ELEVATION = 119.396 (CARGILL DATUM)

BM 104- PK NAIL AND MKEC WASHER, 230.2' NORTH OF CENTERLINE 13TH STREET AND 13.9' EAST OF CENTERLINE BARWISE
ELEVATION = 116.79 (CARGILL DATUM)

BM 202- CHISELED "X" IN CONCRETE PAVEMENT, 542.4' NORTH OF CENTERLINE 13TH STREET AND 21.0' WEST OF CENTERLINE BARWISE.
ELEVATION = 117.77

BM 207- CHISELED "X" IN CONCRETE PAVEMENT, 774.2' NORTH OF CENTERLINE 13TH STREET AND 21.4' WEST OF CENTERLINE OF BARWISE.
ELEVATION = 116.01

UTILITIES:
THE UNDERGROUND UTILITIES SHOWN HEREON WERE MARKED IN THE FIELD BY THE UTILITY OWNERS IN RESPONSE TO KANSAS ONE CALL TICKET NUMBER: 15199567. THE SURVEYOR MAKES NO GUARANTEE THAT THE UNDERGROUND UTILITIES SHOWN COMPRISE ALL SUCH UTILITIES IN THE AREA, EITHER IN SERVICE OR ABANDONED. THE SURVEYOR FURTHER DOES NOT WARRANT THAT THE UNDERGROUND UTILITIES SHOWN ARE IN THE EXACT LOCATION INDICATED ALTHOUGH HE DOES CERTIFY THAT THEY ARE LOCATED AS ACCURATELY AS POSSIBLE FROM INFORMATION AVAILABLE. THE SURVEYOR HAS NOT PHYSICALLY LOCATED THE UNDERGROUND UTILITIES.



Stormwater Certification:
New Development or Redevelopment

These construction plans were prepared in accordance with the current Stormwater Management Regulations as set forth in the City of Wichita's Stormwater Management Ordinance 16.32 and the policies/guidelines presented in the Wichita/Sedgwick County Stormwater Manual.

Disturbed Area= 2.8 acres
Water Quality Treatment: 0.08 AC.-FT
Downstream Channel Protection: N/A for this location in Wichita
Detention: N/A
The BMP used for this development is a 5' dia. Hydroguard (208PPD).

LEGEND

— EXISTING SEWER

— PROPOSED SEWER

APPROVED AS NOTED
BY WICHITA PUBLIC WORKS ENGINEERING AND STORMWATER DIVISION

Engineering: *Referenced 11/14/2016*

Storm Water: *Joe Hickel PE 7/15/16*

NOTE TO CONTRACTORS

Inspection and testing for this project is to be provided by a Licensed Consulting Engineering Firm under contract with the Owner/Developer. Said inspection to be in accordance with the City of Wichita standard construction engineering practices and certified by a Licensed Professional Engineer in the state of Kansas. No work shall be performed by the Contractor without such inspection, nor shall any work be commenced without written authorization by the City Engineer. All Construction and Materials shall comply with the current City of Wichita Specifications and Standards and Special Provisions. (on file and available at Wichita.gov).

An approved copy of these plans signed by City staff are required on-site.

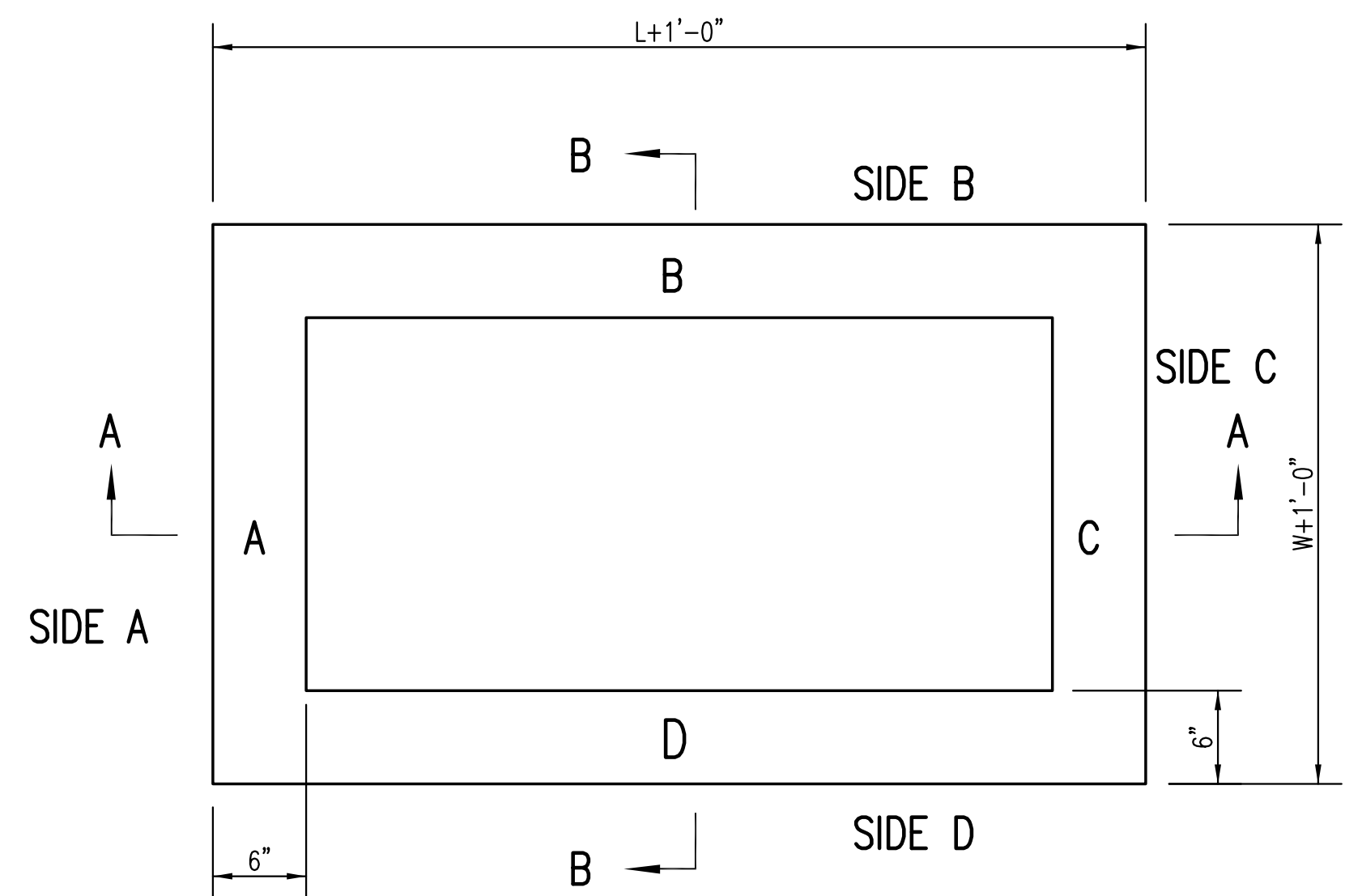


PRIVATE STORM WATER SEWER PLANS FOR
MEAD ST. CORRIDOR
CARGILL - WICHITA, KS

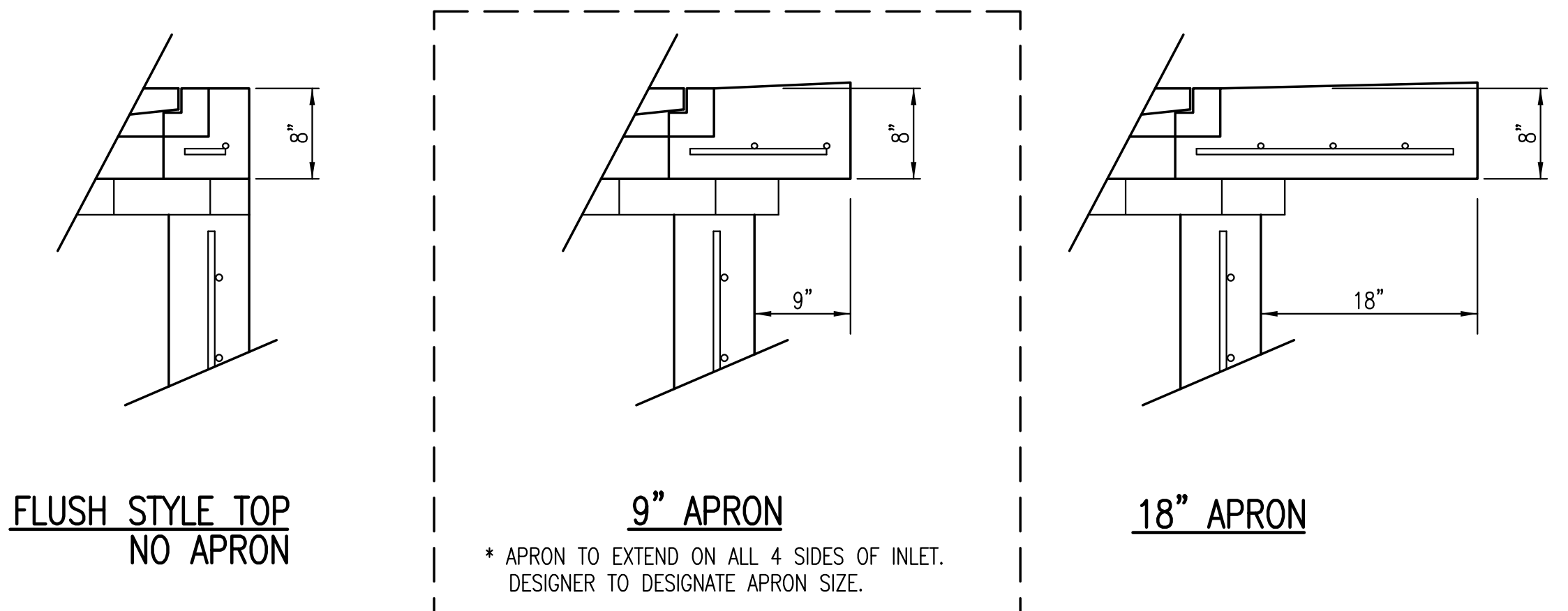
©2016 MKEC Engineering All Rights Reserved
These drawings and their contents, including, but not limited to, all concepts, designs, & ideas are the exclusive property of MKEC Engineering (MKEC), and may not be used or reproduced in any way without the express consent of MKEC.

TITLE SHEET

PROJECT NO.	0405PPD	
DATE	06-15-2016	
SCALE	1"=100'	
DESIGNED	DRAWN	CHECKED
SLF	SLF	MAB
NO.	REVISION	DATE
0	IFC	06-30-16
SHEET NO.		
1 OF 5		



TOP VIEW



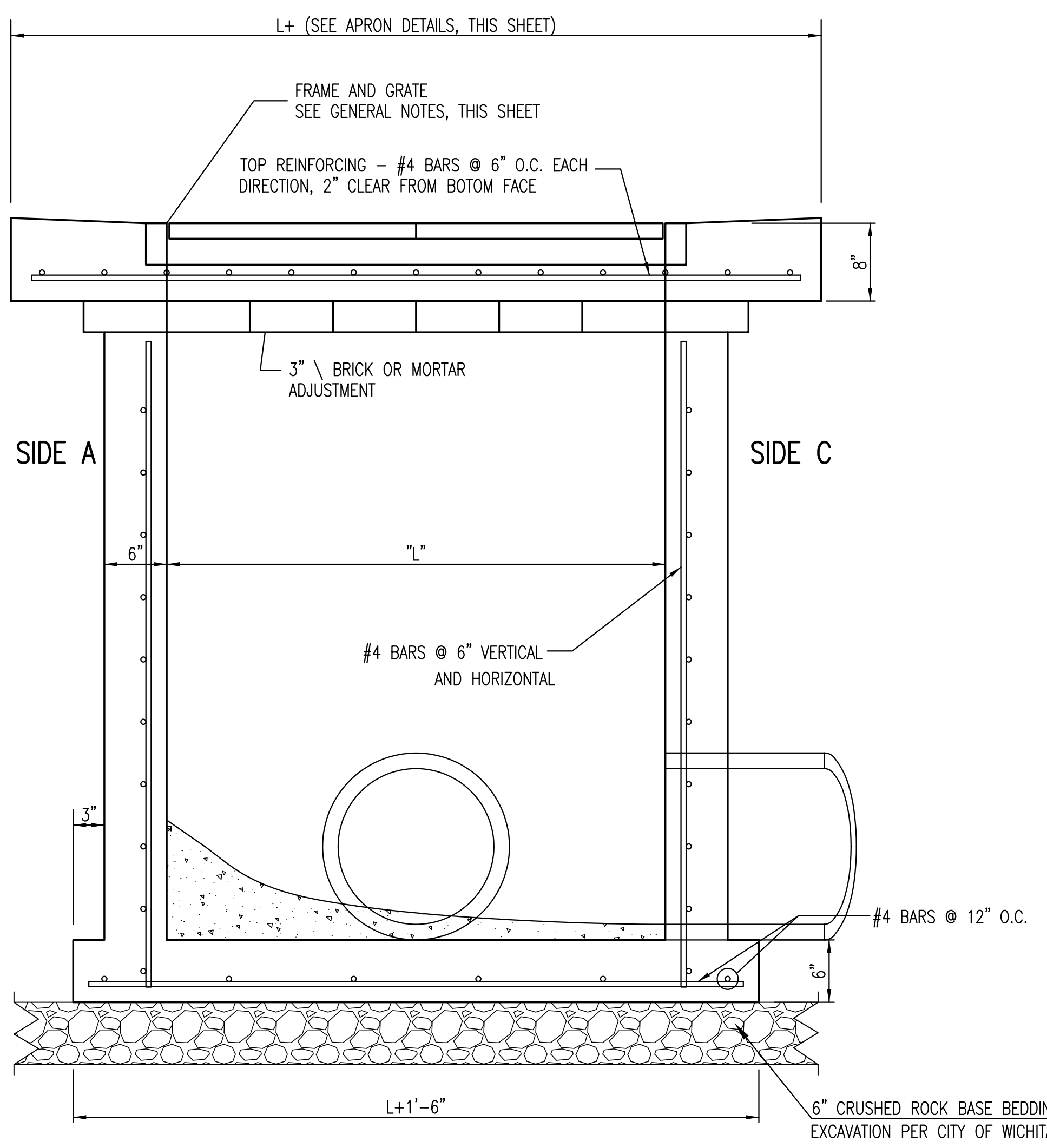
* APRON TO EXTEND ON ALL 4 SIDES OF INLET. DESIGNER TO DESIGNATE APRON SIZE.

W=2' and L=2' for SINGLE DROP INLET
W=2' and L=4' for DOUBLE DROP INLET

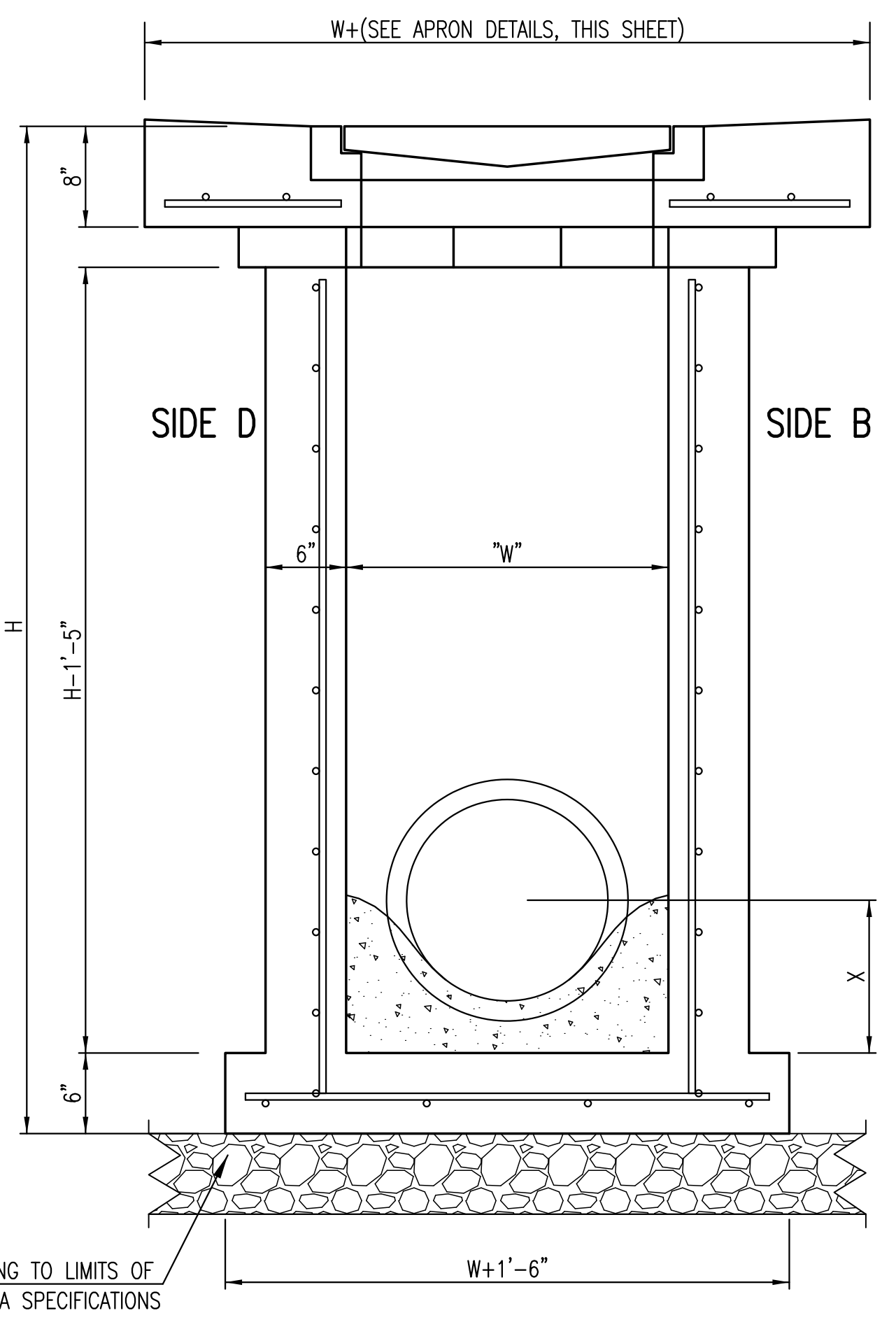
The structure(s) on this detail sheet are designed for HS-20 loading at these specific dimensions only. If larger dimensions are required, the ENGINEER shall provide a project specific structure design for approval by the City Engineer's office.

GENERAL NOTES

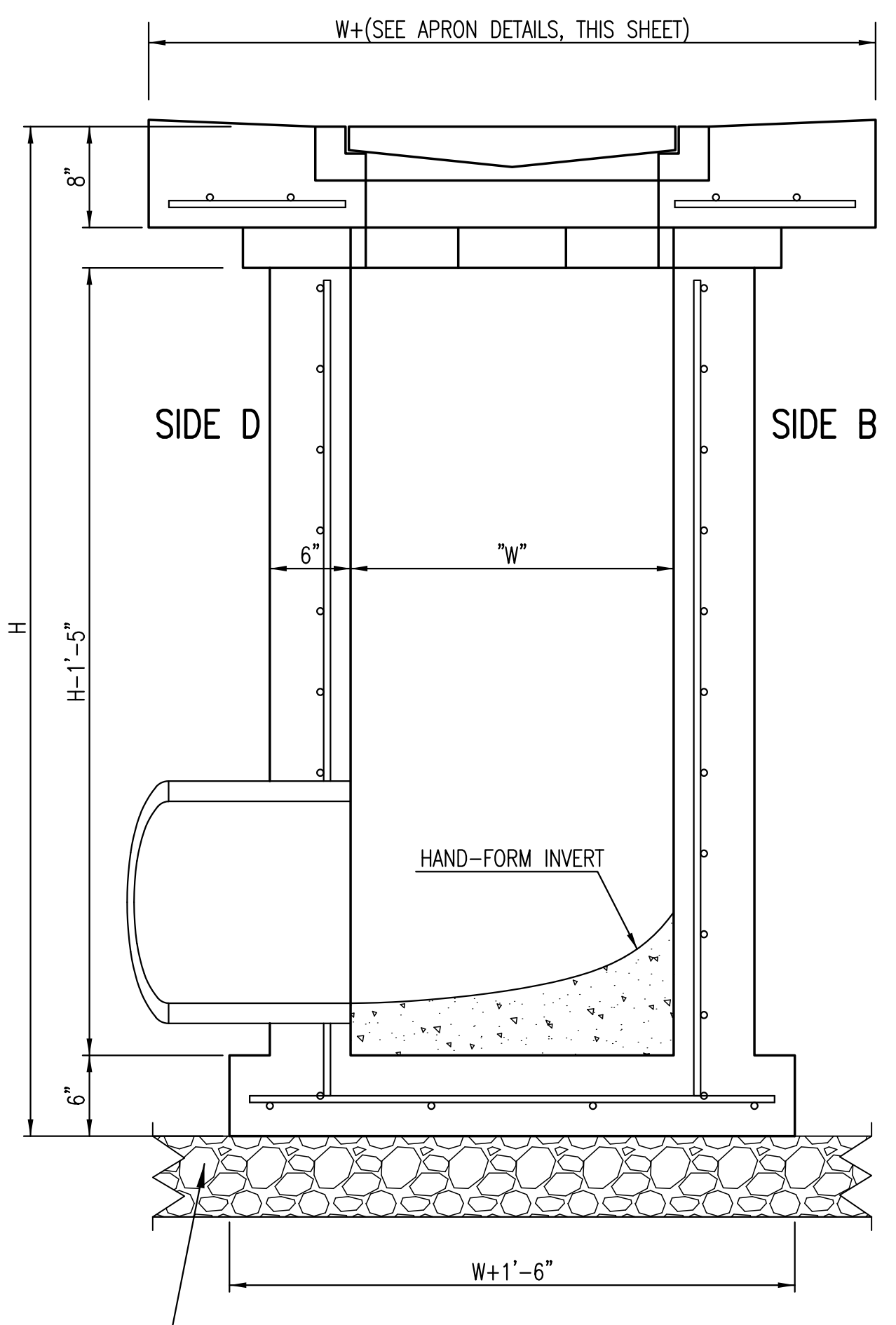
1. GRATE FRAME TO BE INSTALLED ON THIN MORTAR CUSHION TO INSURE FULL SUPPORT ALONG BRICK. CONCRETE USED FOR INLET CONSTRUCTION SHALL CONFORM TO CITY OF WICHITA SPECIFICATIONS FOR CONCRETE PAVEMENT MIX.
2. INLET INVERT SHALL BE SHAPED WITH 8 SACK SAND MIX CONCRETE TO CREATE FLOW CHANNELS AND TO INCREASE HYDRAULIC EFFICIENCY SUCH THAT THE INLET WILL BE SELF-CLEANING BETWEEN ALL INLET AND/OR OUTLET PIPES.
3. THE ENDS OF ALL PIPES INSTALLED IN INLETS SHALL BE CUT OFF FLUSH WITH THE INSIDE FACE OF THE INLET WALL.
4. INLET FRAME AND GRATE TO BE DEETER #2433, EJIW #5391-21 OR APPROVED EQUAL FOR 2'x2' SINGLE DROP INLET AND DEETER #2434, EJIW #5391 Z3 OR APPROVED EQUAL FOR 2'x4' DOUBLE DROP INLET.
5. CONTRACTOR SHALL REMOVE LIFTING HOOKS AFTER INSTALLATION. RECESSES IN INLET WALL SHALL BE GROUTED FLUSH TO THE INLET WALL WITH HYDRAULIC CEMENT AFTER THE INLET IS IN PLACE. LIFTING HOLES THRU THE INLET WALL WILL NOT BE ACCEPTED.



SECTION "A-A"



SECTION "B-B"
END OUTLET



SECTION "B-B"
SIDE OUTLET

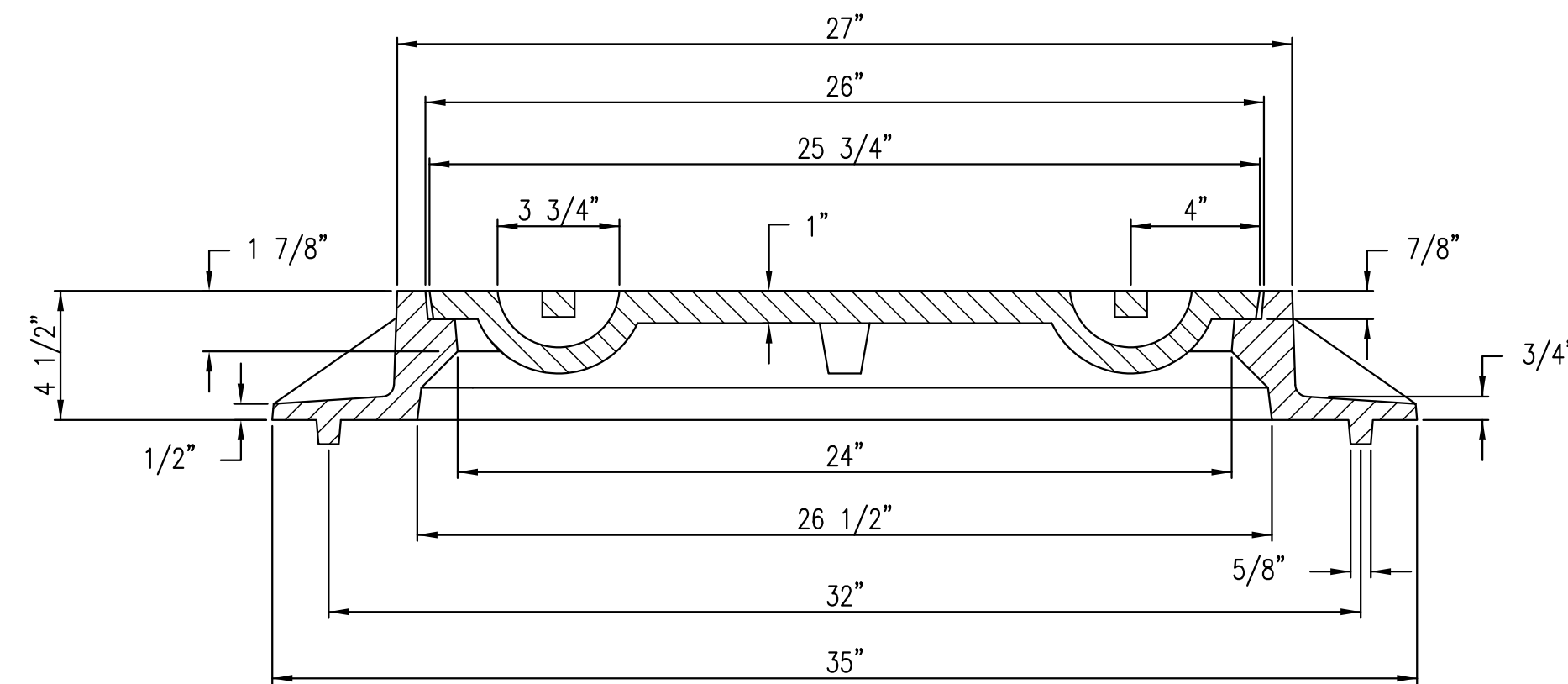
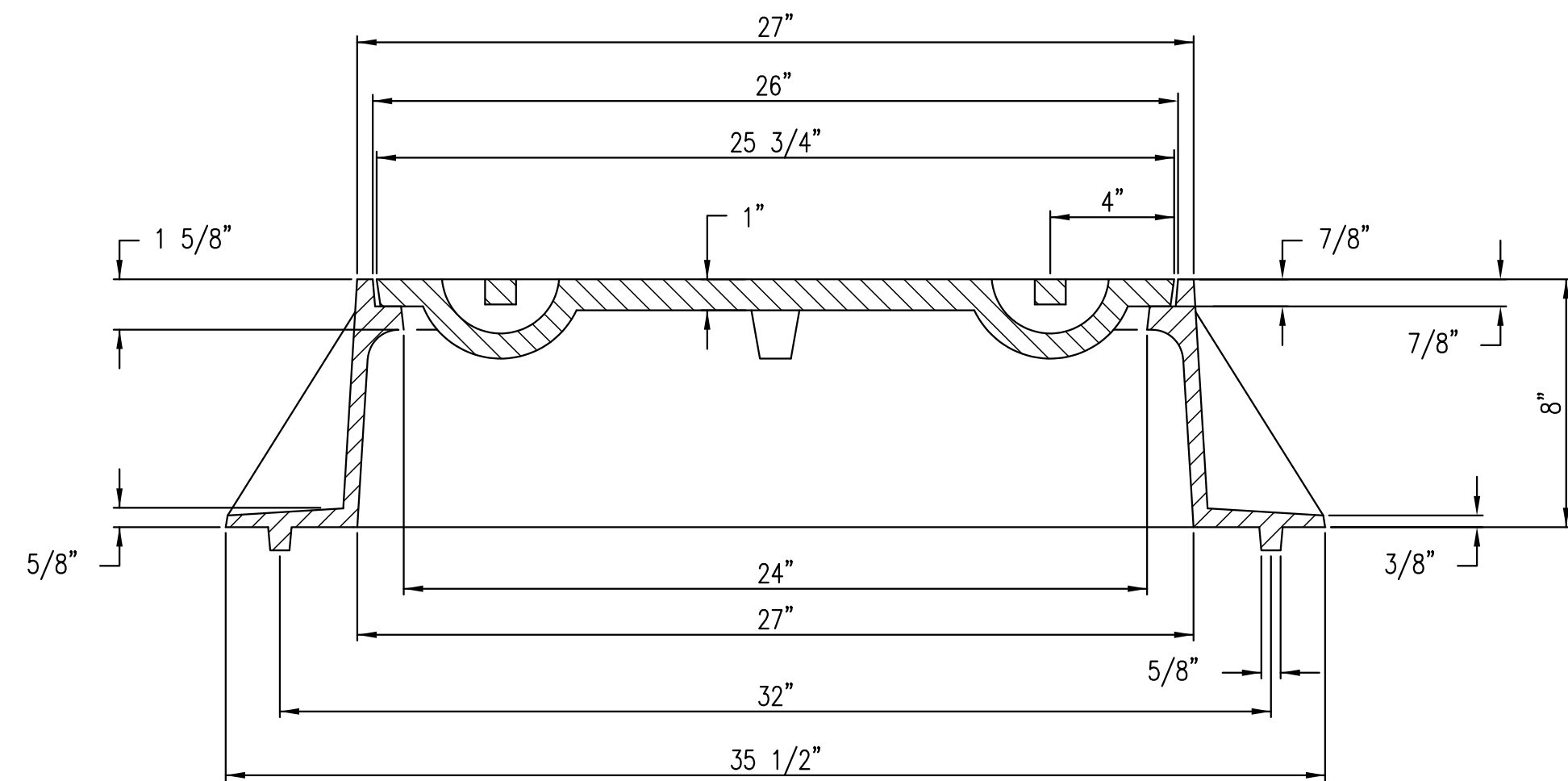
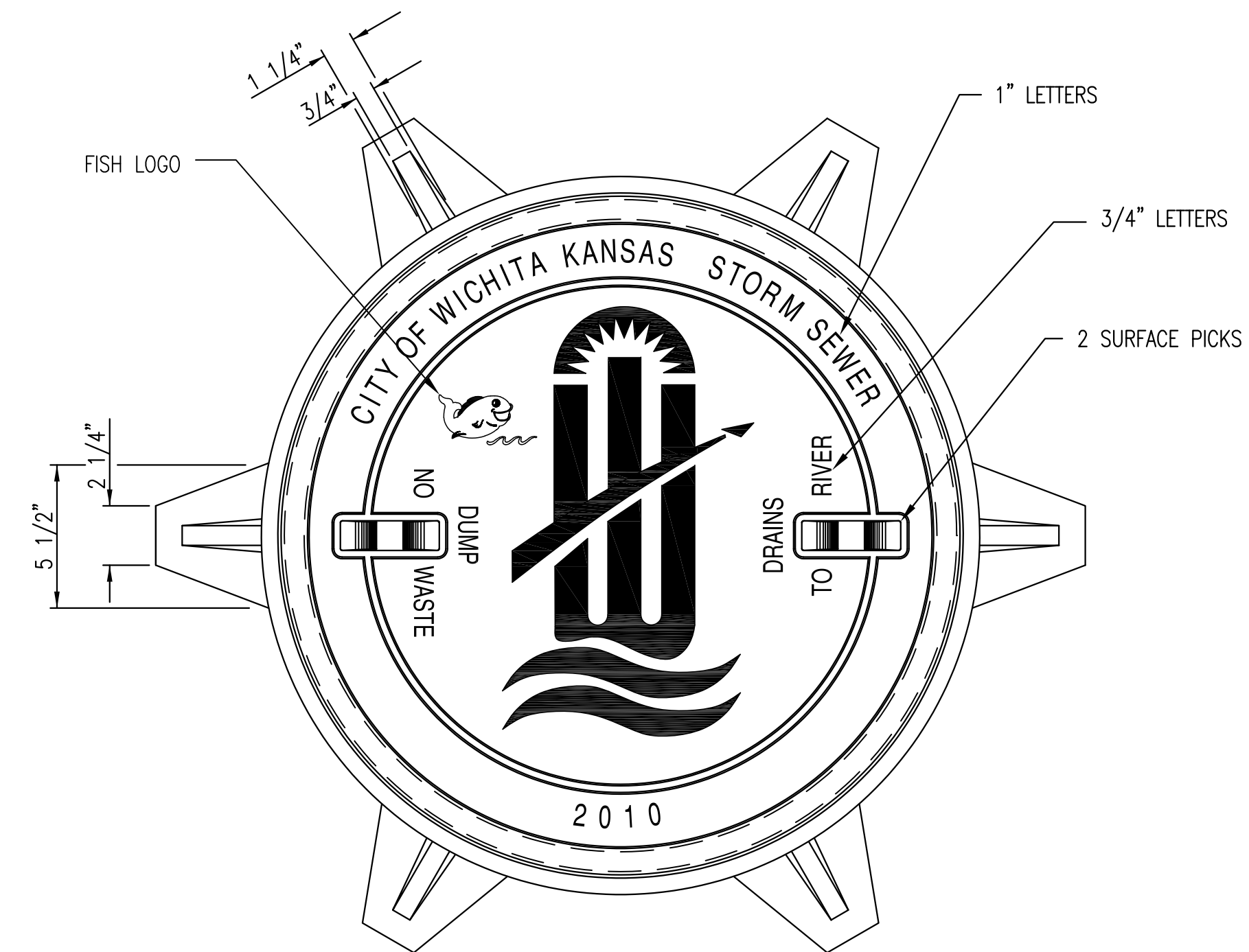
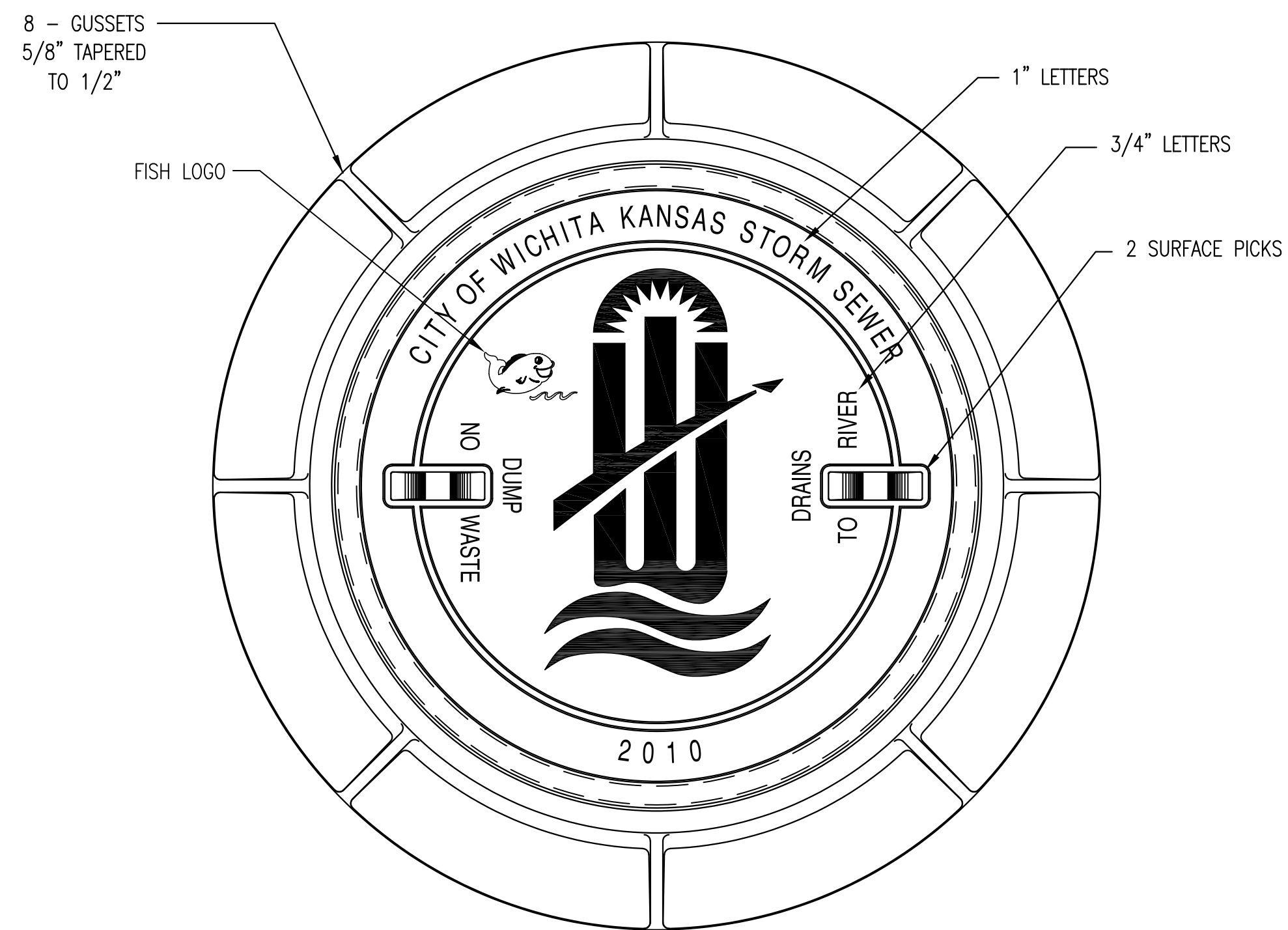
BUILT TO PLAN

REVISED: MARCH 2015



SINGLE/DOUBLE DROP INLET		
CITY ENGINEER GARY JANZEN, P.E.		
PROJECT NUMBER 0405PPD	OCA NUMBER 607861	DATE 06-15-2016
CITY ENGINEER'S OFFICE CITY HALL - SEVENTH FLOOR 455 NORTH MAIN STREET WICHITA, KANSAS 67202-1620 (316) 268-4501		SHEET 2 OF 5

C:\Users\stevie\OneDrive\Documents\Projects\1501060649_Congill\Wichita_Sanders_Civil\Project\150649_CAD\SHIS\05_Civil\Sw\SW-201-Single-Double Drop Inlet
 Plot Scale: 1" = 0'-0" 10/16/2016 10:08:25 AM by STEVEN FRANK
 K:\PROJECTS\2015\1501060649_Congill\Wichita_Sanders_Civil



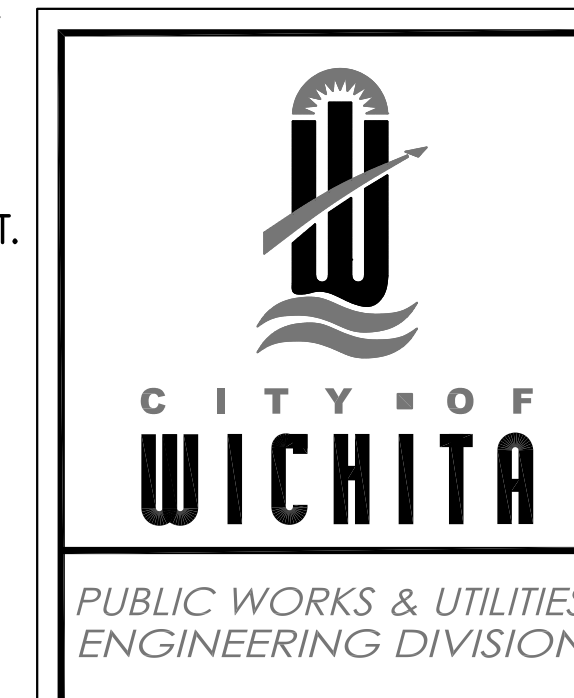
MANHOLE FRAME
DEETER #1261 OR EJIW #1936-Z1

- NOTE:
1. FURNISHED WITH MACHINED HORIZONTAL BEARING SURFACE.
 2. COVER TO BE DEETER #1261 OR EJIW #1936A.

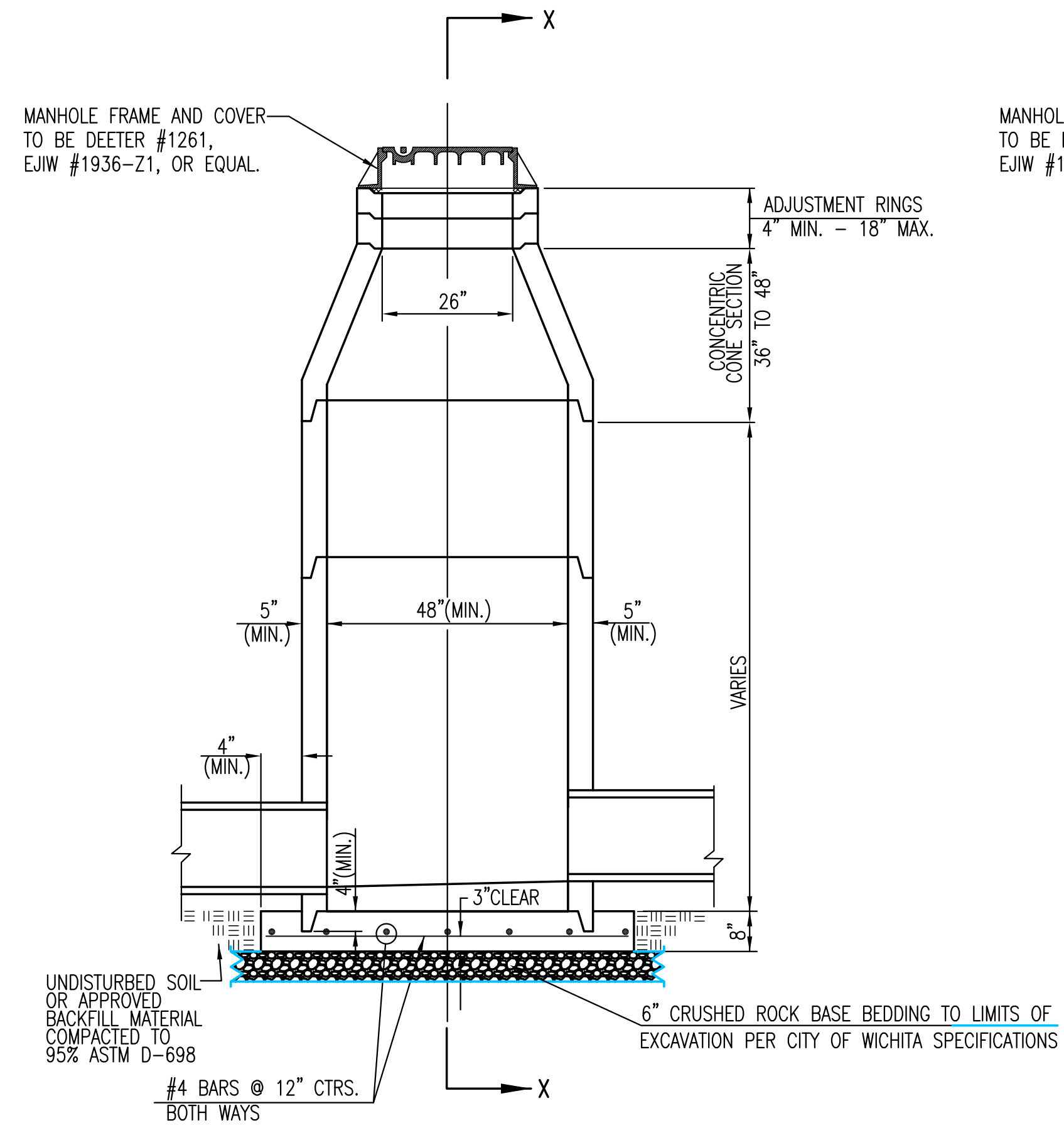
INLET FRAME
DEETER #2014 OR EJIW #1936-Z4

- NOTE:
1. FURNISHED WITH MACHINED HORIZONTAL BEARING SURFACES.
 2. NOT TO BE USED UNDER PAVEMENT.
 3. COVER TO BE DEETER #1261 OR EJIW #1936A.

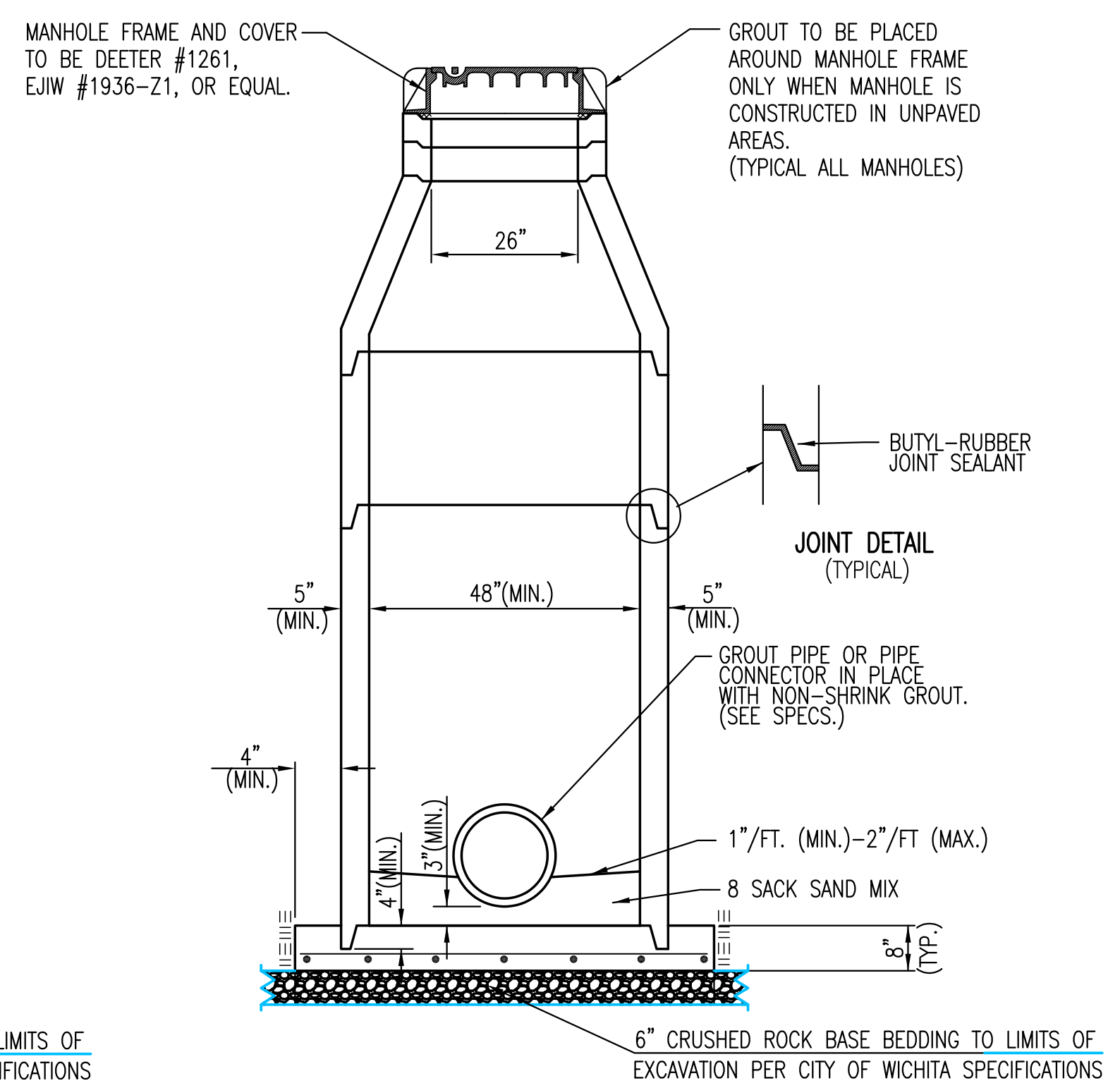
BUILT TO PLAN



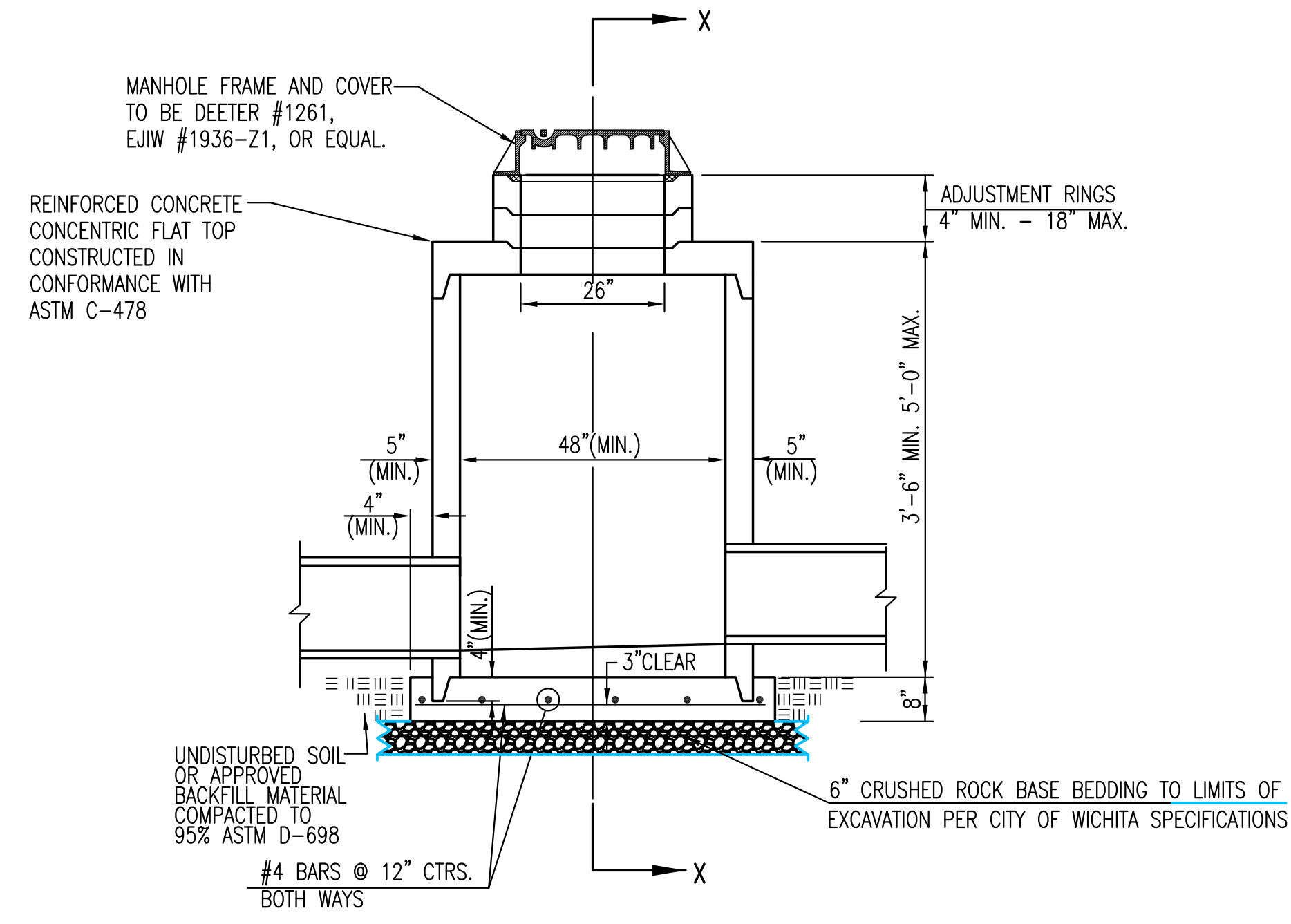
MANHOLE/INLET FRAME AND COVER (STORM SEWER)		
CITY ENGINEER GARY L. JANZEN, P.E.		
PROJECT NUMBER 0405PPD	OCA NUMBER 607861	DATE 06-15-2016
CITY ENGINEER'S OFFICE CITY HALL - SEVENTH FLOOR 455 NORTH MAIN STREET WICHITA, KANSAS 67202-1620 (316) 268-4501		SHEET 3 OF 5



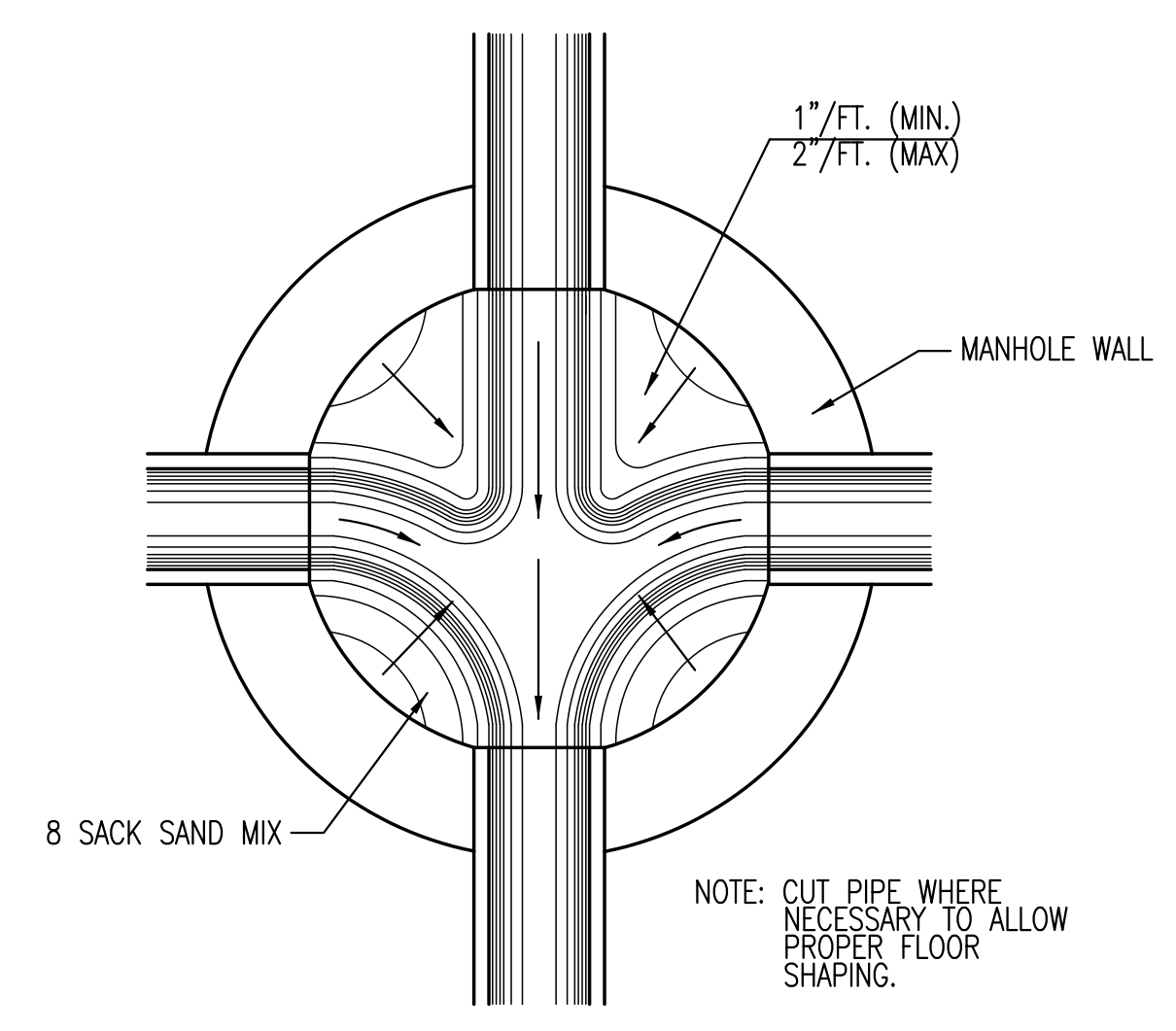
PRECAST STANDARD MANHOLE TYPE "A"



SECTION X-X (TYPICAL)



PRECAST SHALLOW MANHOLE TYPE "B"



TYPICAL MANHOLE FLOOR SHAPING

GENERAL NOTES

- IF, IN THE OPINION OF THE ENGINEER, THE MANHOLE SUBGRADE APPEARS UNSTABLE, THE CONTRACTOR WILL HAVE THE OPTION TO COMPACT SUBGRADE AS SHOWN OR INCREASE THE THICKNESS OF THE MANHOLE BASE AS DIRECTED BY THE ENGINEER.
- STEEL REINFORCING WILL BE REQUIRED IN ALL MANHOLE BASES.
- ALL MANHOLE CONSTRUCTION SHALL BE WATER TIGHT.
- TOP OF MANHOLE FLOOR SLAB SHALL BE AT LEAST 3 INCHES BELOW THE FLOW LINE OF THE OUTLET PIPE TO INSURE SUFFICIENT MINIMUM THICKNESS OF SHAPED INVERT.
- ALL PRECAST CONCRETE MANHOLE SECTIONS SHALL CONFORM TO THE LATEST REVISION OF ASTM C-478 AS MODIFIED BY THE SPECIFICATIONS.
- CONCRETE USED FOR MANHOLE CONSTRUCTION SHALL CONFORM TO CITY OF WICHITA SPECIFICATIONS FOR CONCRETE PAVEMENT MIX.
- PRECAST MANHOLES SHALL BE SET AT LEAST 4 INCHES INTO MANHOLE BASE.
- MANHOLES WITH PIPE SIZES 24" AND LARGER SHALL HAVE 5 FOOT INSIDE DIAMETER (MIN.)
- MANHOLES WITH PRECAST BASES MAY BE USED AT THE CONTRACTORS OPTION. THESE MANHOLES SHALL HAVE AN 8" MINIMUM BASE THICKNESS AND SHALL BE PLACED ON AN 8" MIN. CRUSHED ROCK BASE. PIPES SHALL BE ENCASED WITH CRUSHED ROCK TO AT LEAST 3 FEET FROM THE MANHOLE WALL.
- CONTRACTOR SHALL REMOVE LIFTING HOOKS AFTER INSTALLATION. RECESSES IN MANHOLE WALL SHALL BE GROUTED FLUSH TO THE MANHOLE WALL WITH HYDRAULIC CEMENT AFTER THE MANHOLE IS IN PLACE. LIFTING HOLES THRU THE MANHOLE WALL WILL NOT BE ACCEPTED.
- THE ENDS OF ALL PIPES IN MANHOLES SHALL BE CUT OFF FLUSH WITH THE INSIDE FACE OF THE MANHOLE WALL.
- MANHOLE INVERT SHALL BE SHAPED WITH 8 SACK SAND MIX CONCRETE TO CREATE FLOW CHANNELS AND TO INCREASE HYDRAULIC EFFICIENCY SUCH THAT THE MANHOLE WILL BE SELF CLEANING BETWEEN ALL INLET AND/OR OUTLET PIPES.
- MANHOLE FRAME AND COVER TO BE DEETER #1261, EJIW #1936-21, OR APPROVED EQUAL, SEE SW-303.
- FOR FLAT GRATED INLET APPLICATION, GRATE TO BE DEETER #1933, EJIW #1205 MDI, OR APPROVED EQUAL.
- FOR BEEHIVE GRATE APPLICATION, GRATE TO BE DEETER #4495, EJIW #120545, OR APPROVED EQUAL.

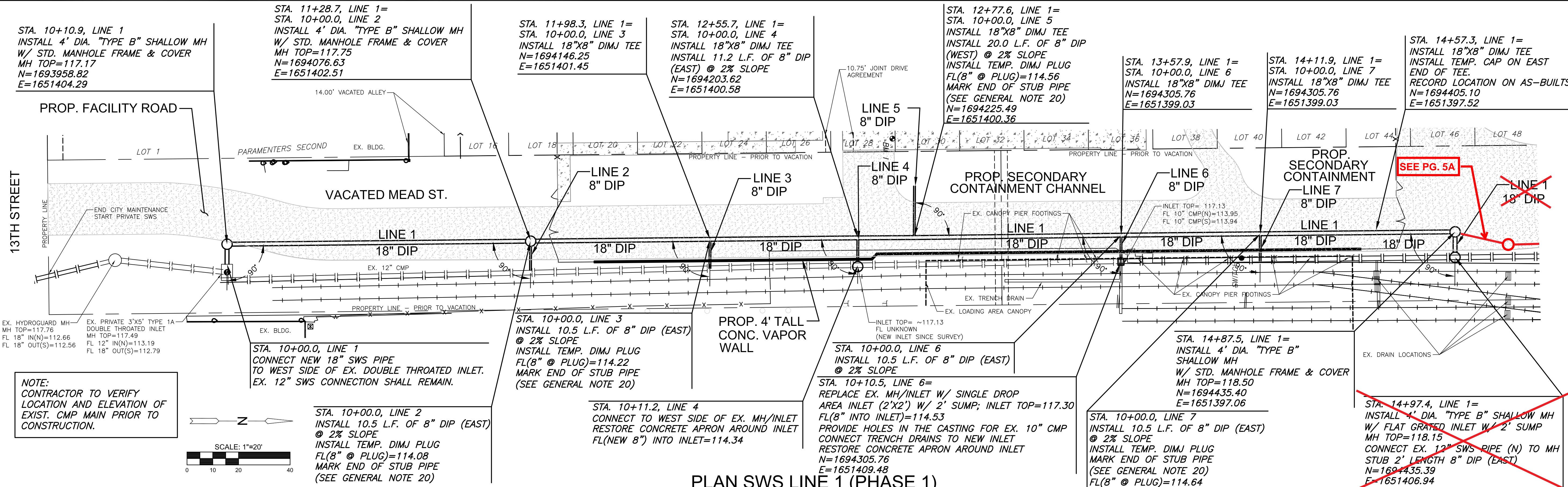
BUILT TO PLAN

<p>CITY OF WICHITA PUBLIC WORKS & UTILITIES ENGINEERING DIVISION</p>	<p>REVISED: MARCH 2015</p> <p>PRECAST CONCRETE MANHOLE (STORM SEWER)</p> <p>CITY ENGINEER GARY JANZEN, P.E.</p>		
	PROJECT NUMBER 0405PPD	OCA NUMBER 607861	DATE 06-15-2016
	CITY ENGINEER'S OFFICE CITY HALL - SEVENTH FLOOR 455 NORTH MAIN STREET WICHITA, KANSAS 67202-1620 (316) 268-4501		SHEET 4 OF 5

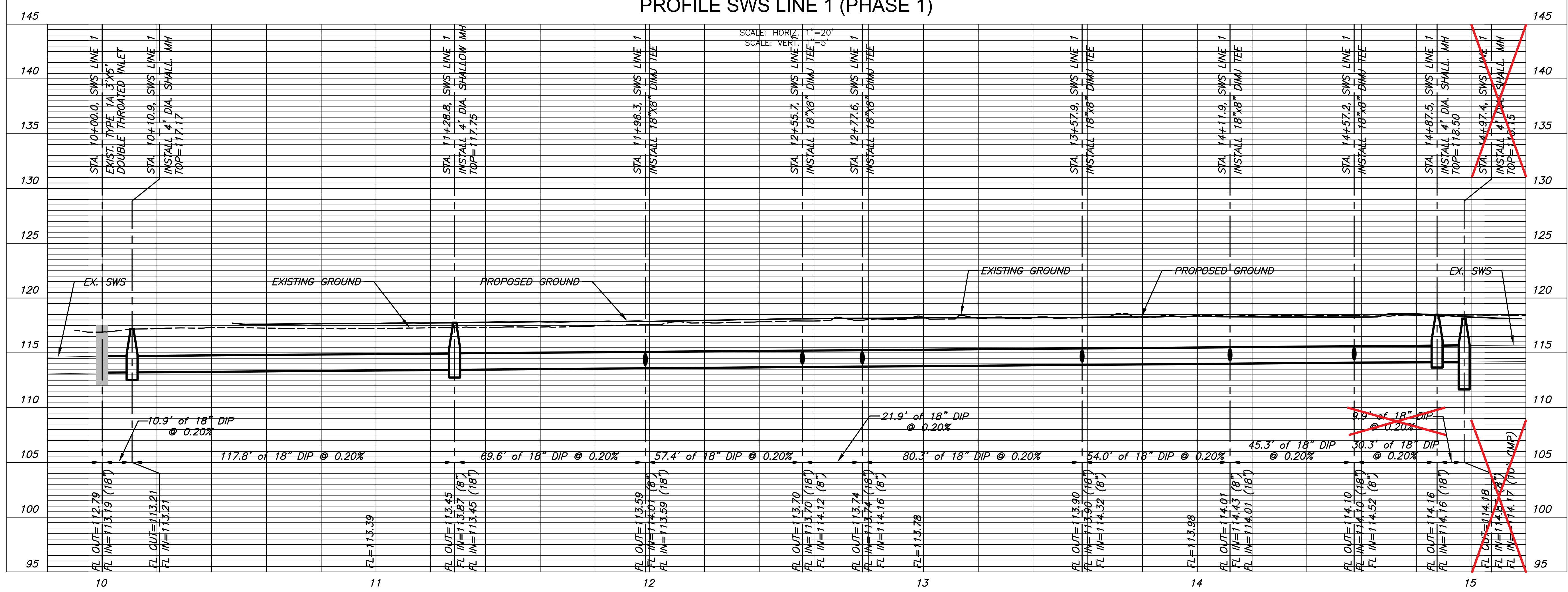
SW-301-15-0016 01/17/15 PW JL GFRANK
 Rev 5 Date 11/05/2015 4:03:48 PM by STEVEN FRANK
 K:\PROJECTS\2015\1501060649_Congill_Wichita_Sanders_Civil Project\150649 CAD\SHITS\05 Civil\SW-301-Precast Conc. MH

PLOTTED: Friday, July 01, 2016 @ 08:18PM

REPROJECTS\2016\160400\0405PPD\CARGILL_WICHITA_SANDBERG_CIVIL_PROJECT\160400\CADD\S\SWIS\160400_DPT.dwg



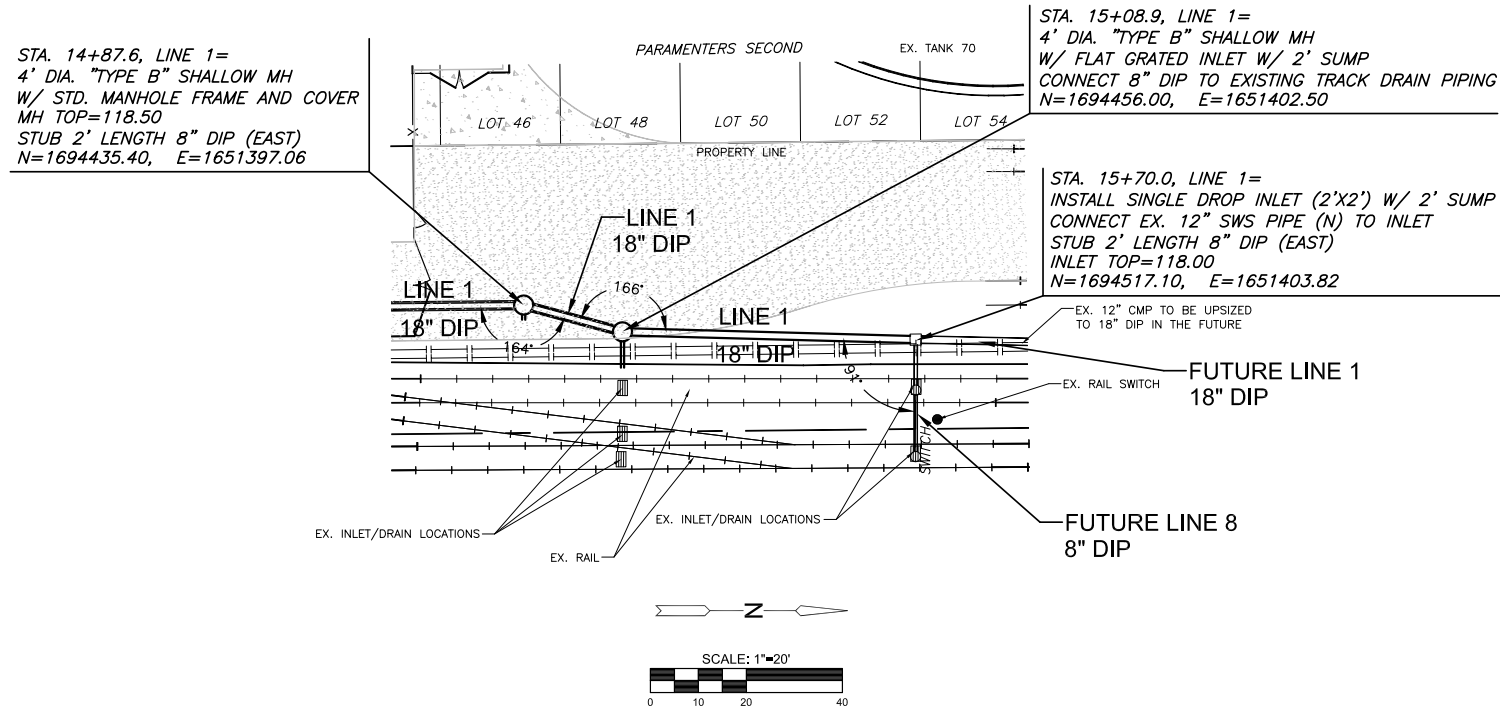
PLAN SWS LINE 1 (PHASE 1)
PROFILE SWS LINE 1 (PHASE 1)



PRIVATE STORM WATER SEWER PLANS FOR
MEAD ST. CORRIDOR
 CARGILL - WICHITA, KS

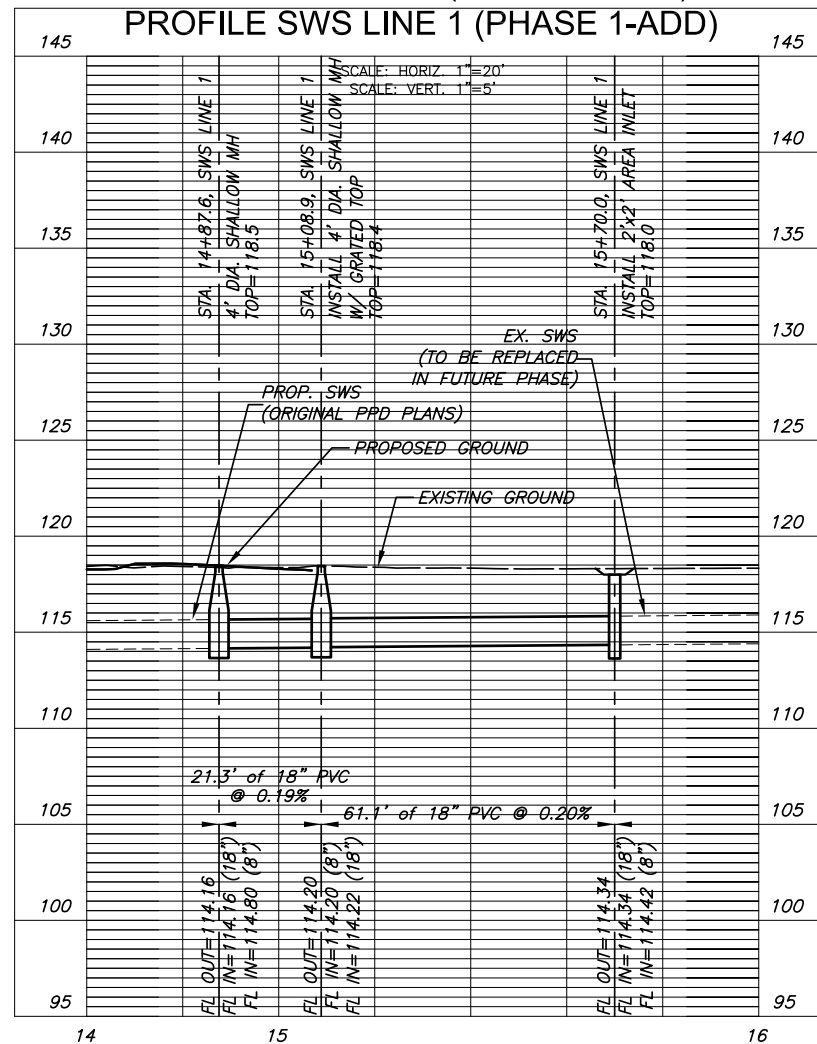
©2016 MKEC Engineering All Rights Reserved
 www.mkec.com
 These drawings and their contents, including, but not limited to, all concepts, designs, & ideas are the exclusive property of MKEC Engineering (MKEC), and may not be used or reproduced in any way without the express consent of MKEC.

SWS LINE 1 PLAN & PROFILE	
PROJECT NO.	0405PPD
DATE	06-15-2016
SCALE	1"=20"
DESIGNED	DRAWN
SLF	SLF
CHECKED	MAB
NO.	REVISION
DATE	DATE
SHEET NO.	
5 OF 5	



NOTE:
CONTRACTOR TO VERIFY
LOCATION AND ELEVATION OF
EXIST. CMP MAIN PRIOR TO
CONSTRUCTION.

PLAN SWS LINE 1 (PHASE 1-ADD)



ISSUED FOR
AS-BUILT PURPOSES

BUILT TO PLAN



Wichita, KS - 316-684-9600

PRIVATE STORM WATER SEWER PLANS FOR
MEAD ST. CORRIDOR
CARGILL - WICHITA, KS

©2016
MKEC Engineering
All Rights Reserved
www.mkec.com
These drawings and their contents,
including, but not limited to, all concepts,
designs, & ideas are the exclusive
property of MKEC Engineering (MKEC),
and may not be used or reproduced in any
way without the express consent of MKEC.

**SWS LINE 1
PLAN &
PROFILE - ADD**

PROJECT NO.	0405PPD	
DATE	09-20-2016	
SCALE	1"=20'	
DESIGNED	DRAWN	CHECKED
SLF	SLF	MAB
NO.	REVISION	DATE

SHEET NO.