

- Ref. P.O.T. Sta. 1+678.476
1. Set 13 mm rebar @ P.O.T.
 2. Spike & Washer in Top 1 m Stump 11.27 SSE
 3. Spike & Washer in Pow. Pole 8.97 N
 4. 0.20 m North of Exist. @ Asph. Road

- Sta. 1+775 Install
375 mm x 9.8 m E.P. Lt.
with End Sects. (Type 1)
See Sh. No. 21-22.

- Ref. P.O.T. Sta. 2+034.641
1. Set 13 mm rebar @ P.O.T.
 2. Spike & Washer in Pow. Pole
 3. Spike & Washer in Pow. Pole
 4. 0.20 m North of Exist. @ Asph. Road

- Ref. NE Cor. Sec. 13 T27S R2W = Sta. 2+228.901
1. Fnd. 20 mm Iron Pipe in Monument Box 19.49 NW
 2. Spk. & Washer in Light Pole 24.85 NE
 3. Nail & Bottle Cap in Pow. Pole 28.56 SE
 4. Nail & Spiner in Light Pole
 5. In @ of North-South Conc. Road
 6. In @ of East-West Road

STATE	PROJECT NO.	YEAR	SHEET NO.	TOTAL SHEETS
KANSAS	87 N-0230-01	2003	5	73

Curve ①
 $\Delta = 135^{\circ}00'$
 $R = 9.62$ m
 $T = 23.225$ m
 $L = 22.667$ m

Curve ②
 $\Delta = 49^{\circ}25'45''$
 $R = 20.984$ m
 $T = 9.658$ m
 $L = 18.103$ m

Note: The Contr. shall construct Slope Protection (Riprap Stone)(Light 600 mm) on the berm slopes as follows:
 Berm slope No. 1 = 440 cu m
 Berm slope No. 2 = 325 cu m
 Total = 765 cu m
 Pond

SEC. 12 T27S R2W
 Sta. 1+826.5; Remove Entrance
 Ex. 750 mm x 9.0 m RCP Lt.
 with brick & Masonry Hdwl's.

FOR INFORMATION ONLY
 Large trees & stumps to be grubbed this sheet: 55-1 m,
 Total = 55

Sta. 1+965; Install
375 mm x 7.3 m E.P. Lt.
See Sh. No. 21-22.

NOTE: 6" FORCE MAIN
(BY Others)

Sta. 1+980.1; Remove
Ex. 375 mm x 6.0 m CMP Lt.
1.825 m Sidewalk Curb & Gutter
Type I

Match Exist.
Saw Cut

Adjust water valves to grade.

200 mm Conc. Pavement
See Sh. No. 12

200 mm Conc. Pavement
See Sh. No. 12

Match Exist.
Saw Cut

Match Exist.
Saw Cut

Match Exist.
Saw Cut

Match Exist.
Saw Cut

Match Exist.
Saw Cut

Match Exist.
Saw Cut

Match Exist.
Saw Cut

Match Exist.
Saw Cut

Match Exist.
Saw Cut

Match Exist.
Saw Cut

Match Exist.
Saw Cut

Match Exist.
Saw Cut

LEGEND

Removal of Existing Pavement (Rock Exc.)

Removal of Exist. sidewalk and asphalt drive 21.336 m

Sta. 1+710.60; Remove
Ex. 600 mm x 12.3 m CMP

Sta. 1+686.1; Remove
Ex. 600 mm x 7.3 m CMP

Sta. 1+775; Install
Manhole Type P (Standard) 8.378 m Rt.
Install 450 mm x 77.4 m RCP (E)
See Sh. No. 16 & 19.

Sta. 1+863.6; Remove Ex. 600 mm
x 1 200 mm x 5.4 m MAC Rt.

Note: Sta. 1+842.086 & Sta. 1+923.914
Const. Safety Barrier (Special) Lt. & Rt.
on bridge approach pavement.
See Sh. No. 7-8.

RESERVE "A"
FLOODWAY

Sta. 1+883; Const.
13.5-3 @ 18-13.5 m Cont. R.C.
Haunched Slab Spans
14.6 m Roadway with 1.80 m
sidewalk Lt. & Rt. Skew 15' Lt.
See Sh. No. 24-35.

Sta. 1+940; Const.
Curb Inlet Type 1, 6.715 m Rt.
(Inlet Opening) 150 mm x 1 500 mm
Install 525 mm x 84.3 m Stm. Sew. (RCP)(E)
Connect to Ex. 525 mm (RCP) Stm.
Sew. with Conc. Collar (See Sh. No. 2)
Install 600 mm x 18.3 m Stm. Sew. (RCP)
(SW) with End Sect. (Type I) (RC)
See Sh. No. 16-17.

Sta. 1+927.6; Const sidewalk turn-
around 31.0 m Rt. (35.53 sq m)
Record and match the dimensions
of the existing turnaround.

The Contractor shall remove the existing structure
(Br. No. 00000000871580) (2-12.2 m Steel Beam
spans on concrete and timber substructure. 7.3 m
timber plank deck with asphalt overlay) and excavate
the channel improvements and complete the embank-
ments in the vicinity of the new structure, prior to
construction.

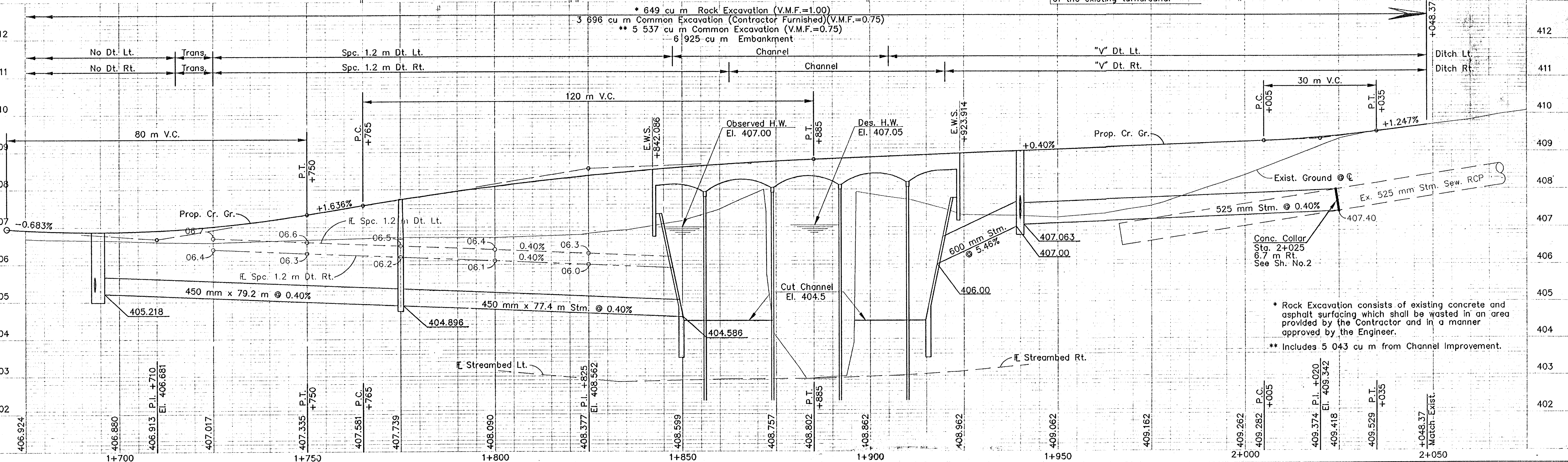
The existing structure shall become the property of
the Contractor and shall be removed from
the site.

B.M. #3 - "□" cut found @ Front Face Inlet at Cedar Park & 13th St.
5.3 m Rt. Sta. 2+068.7 Elev.=409.920

B.M. #1 - R/R Spike in Power Pole
9.1 m Lt. Sta. 1+678.476 Elev.=407.247

B.M. #2 - "□" cut Top NE Corner East Steel Abutment Beam
2.3 m Lt. Sta. 1+896.3 Elev.=407.728

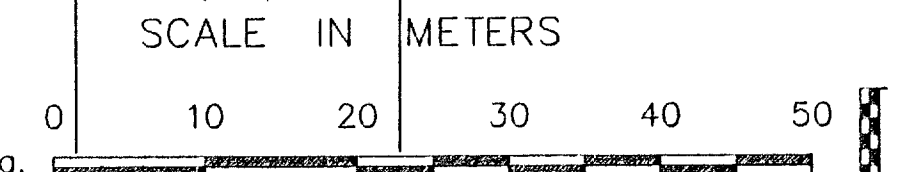
* 649 cu m Rock Excavation (V.M.F.=1.00)
3 696 cu m Common Excavation (Contractor Furnished)(V.M.F.=0.75)
** 5 537 cu m Common Excavation (V.M.F.=0.75)
6 1925 cu m Embankment



* Rock Excavation consists of existing concrete and
asphalt surfacing which shall be wasted in an area
provided by the Contractor and in a manner
approved by the Engineer.

** Includes 5 043 cu m from Channel Improvement.

PLAN: Lat. & Long.
PROFILE: Horizontal same as above
Vertical



PLAN
DATE: _____
BY: _____
CHECKED: _____
DATE: _____

PROFILE
DATE: _____
BY: _____
CHECKED: _____
DATE: _____

02517/DWGS/PP02 Scale 1:500