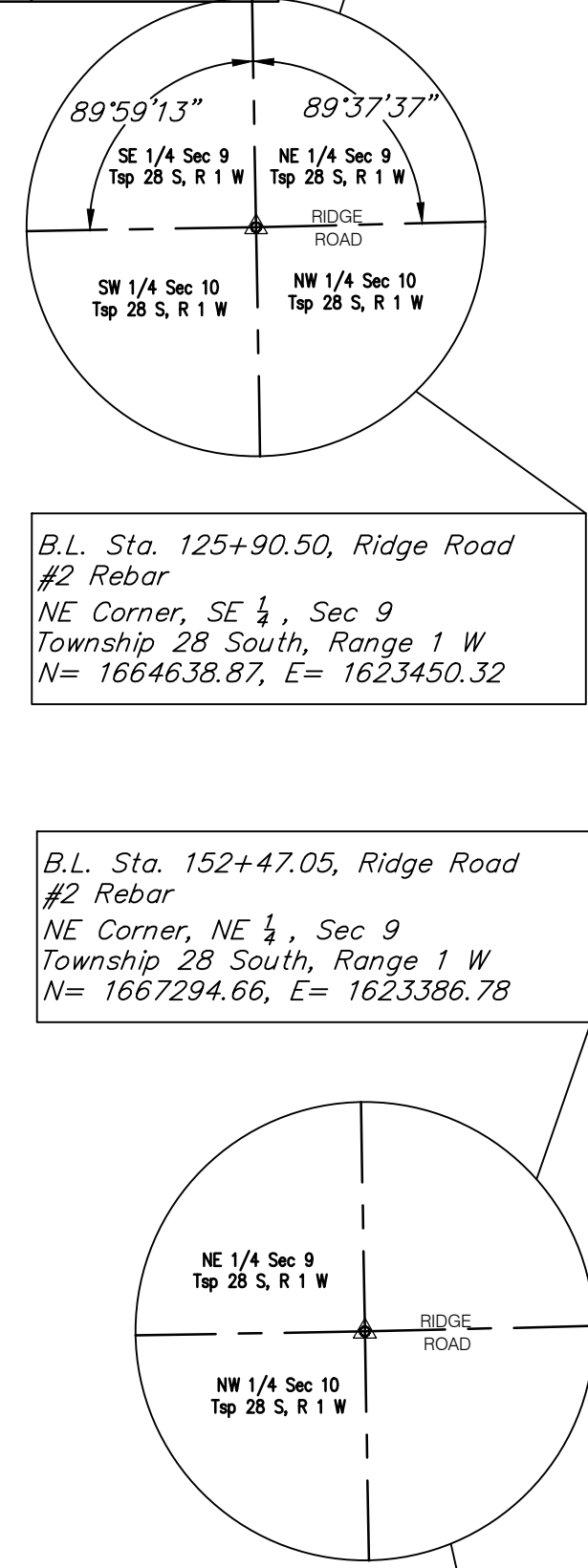
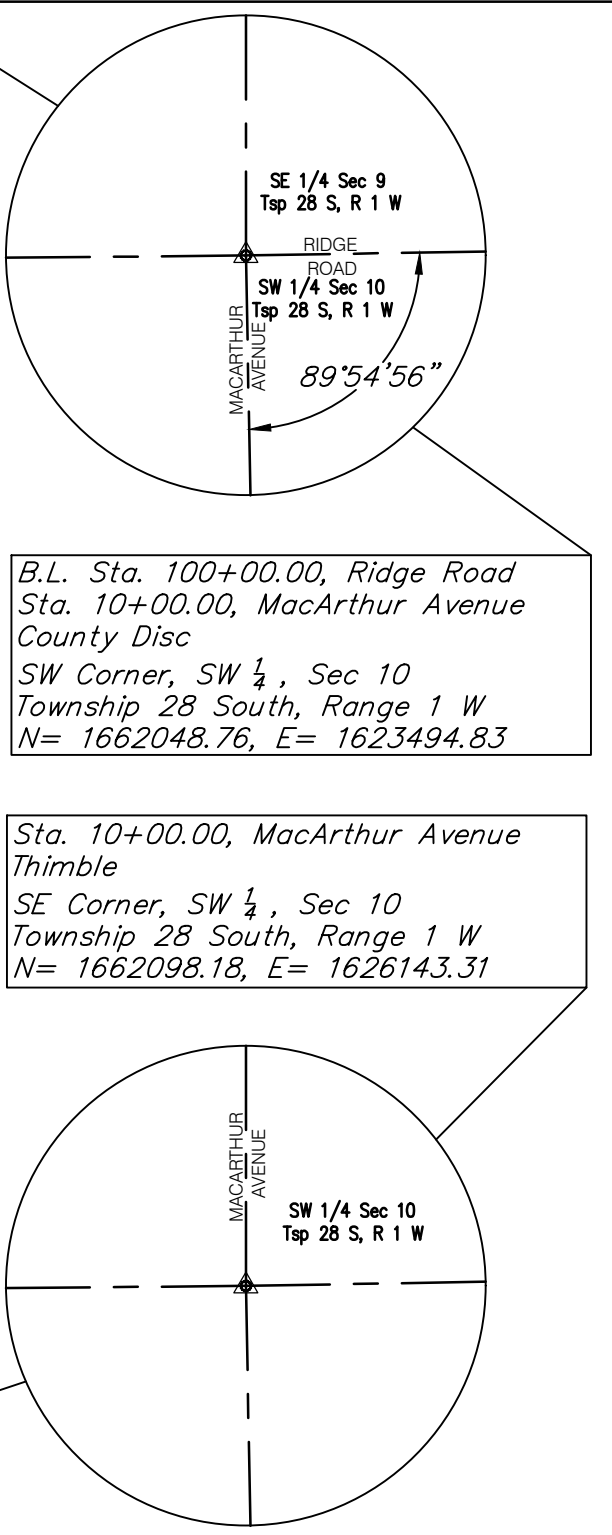


### BENCHMARKS:

- BM #1 - Chiseled "□" on the Northeast Corner of the MacArthur Bridge over the Cowskin Creek just East of Ridge Road.  
Elev. = 1297.97 (NAVD 88)
- BM #2 - City of Wichita Brass Disc on the Southwest Corner of the Ridge Road Bridge over the Cowskin Creek just north of MacArthur Avenue.  
Elev. = 1299.63 (NAVD 88)
- BM #3 - Mag Nail in the South Return of the Asphalt Drive to 3830 S. Ridge Road.  
Elev. = 1301.41 (NAVD 88)
- BM #4 - Mag Nail in the North Return of the Asphalt Drive to 3801 S. Ridge Road.  
Elev. = 1302.74 (NAVD 88)
- BM #5 - Mag Nail in the North Side of the Field Entrance Across the Street from 7121 S. Ridge Road.  
Elev. = 1307.62 (NAVD 88)
- BM #6 - #4 Rebar in Thimble at the Southeast Corner of Northwest Quarter of Section 9, Twp. 28 S, R 1 W.  
Elev. = 1309.30 (NAVD 88)
- BM #7 - Chiseled "□" on the West End Section of the Furthest North 36" RCP Under Ridge Road 1,800' South of K-42  
Elev. = 1308.15 (NAVD 88)
- BM #8 - Railroad Spike in the East Face of the 2nd Power Pole South of the Fire Hydrant.  
Elev. = 1309.76 (NAVD 88)
- BM #9 - Chiseled "X" in the South Return of the Concrete Drive to the Cessna Property.  
Elev. = 1310.56 (NAVD 88)

### CONTROL POINTS:

- CP #1 - Mag Nail  
BL Sta. 107+81.26, 15.86' Rt.  
N-1662830.17  
E-1623497.26
- CP #2 - Mag Nail  
BL Sta. 111+30.17, 17.64' Lt.  
N-1663178.46  
E-1623457.78
- CP #3 - Mag Nail  
BL Sta. 117+13.06, 22.57' Lt.  
N-1663761.18  
E-1623442.83
- CP #4 - Mag Nail  
BL Sta. 139+37.90, 27.19' Rt.  
N-1665986.54  
E-1623445.27



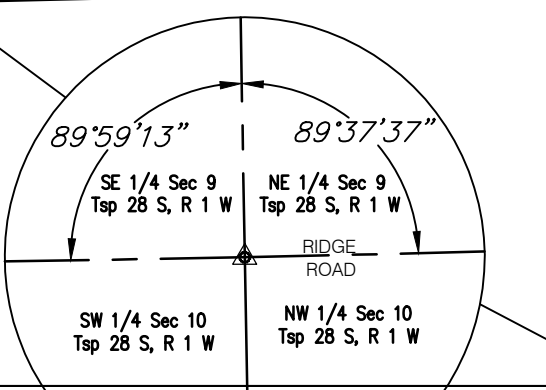
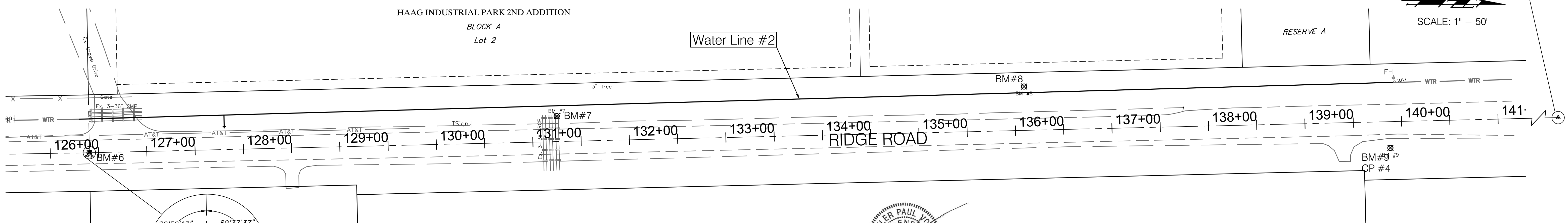
B.L. Sta. 100+00.00, Ridge Road  
Sta. 10+00.00, MacArthur Avenue  
County Disc  
SW Corner, SW 1/4, Sec 10  
Township 28 South, Range 1 W  
N= 1662048.76, E= 1623494.83

Sta. 10+00.00, MacArthur Avenue  
Thimble  
SE Corner, SW 1/4, Sec 10  
Township 28 South, Range 1 W  
N= 1662098.18, E= 1626143.31

B.L. Sta. 125+90.50, Ridge Road  
#2 Rebar  
NE Corner, SE 1/4, Sec 9  
Township 28 South, Range 1 W  
N= 1664638.87, E= 1623450.32

B.L. Sta. 152+47.05, Ridge Road  
#2 Rebar  
NE Corner, NE 1/4, Sec 9  
Township 28 South, Range 1 W  
N= 1667294.66, E= 1623386.78

HAAG INDUSTRIAL PARK 2ND ADDITION  
BLOCK A  
Lot 2



B.L. Sta. 125+90.50, Ridge Road  
#2 Rebar  
NE Corner, SE 1/4, Sec 9  
Township 28 South, Range 1 W  
N= 1664638.87, E= 1623450.32



Drawing File: E:\Projects\Ridge & MacArthur Water\Civil M\Water Base.dwg (Krosholt)  
Project No. 1664E413 CAPITAL IMPROVEMENT PROJECT  
Design: TPV  
Drawn: TPV  
Approved: TPV  
Scale: NOTED

### KEYSHEET

**Baughman Company, P.A.**  
315 Ellis St. Wichita, KS 67211 P 316-262-2271 F 316-262-0149  
ENGINEERING | SURVEYING | PLANNING | LANDSCAPE ARCHITECTURE