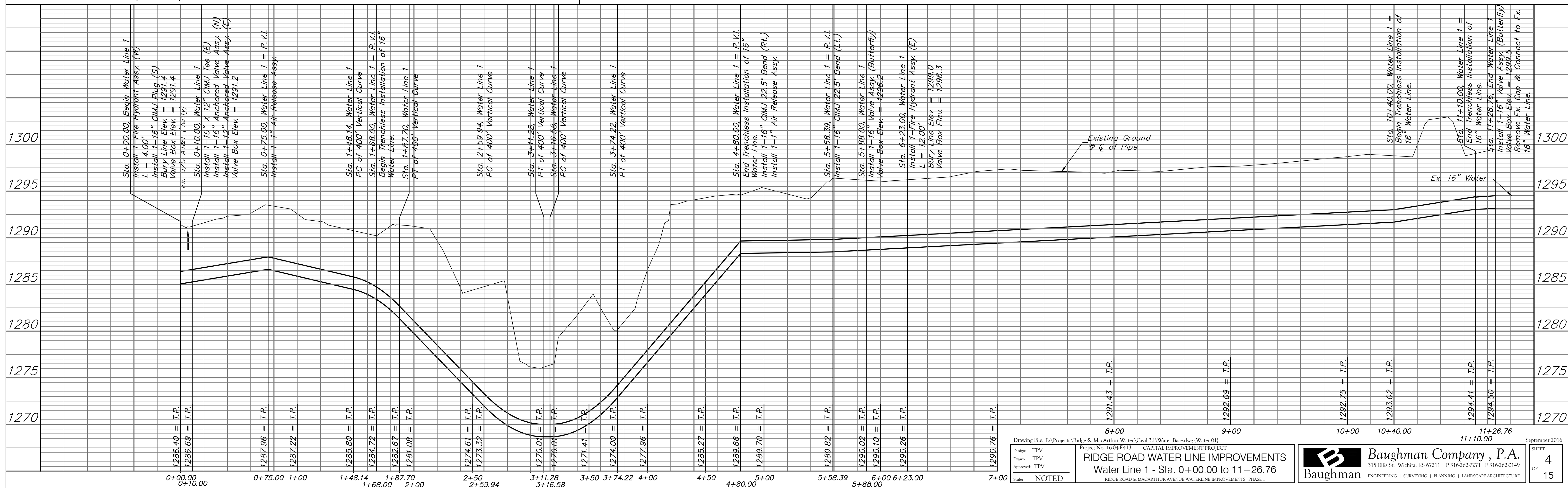


BM #2 - City of Wichita Brass Disc on the Southwest Corner of the Ridge Road Bridge over the Cowskin Creek just north of MacArthur Avenue. Elev. = 1299.63 (NAVD 88)

BM #3 - Mag Nail in the South Return of the Asphalt Drive to 3830 S. Ridge Road. Elev. = 1301.41 (NAVD 88)

Prior to Beginning Construction, The Contractor Shall Excavate the Ex. 16" Water Line at Sta. 11+26.76 to Verify Size and Location. All Necessary Adjustments to the Proposed and Existing Water Lines to Make the Connections, Including Additional Water Line and Fittings, Shall be Considered SUBSIDIARY to the Water Line Installations.



Drawing File: E:\Projects\Ridge & MacArthur Water\Civil 3D\Water Base.dwg (Water 01)

Project No. 1604E413 CAPITAL IMPROVEMENT PROJECT

RIDGE ROAD WATER LINE IMPROVEMENTS
Water Line 1 - Sta. 0+00.00 to 11+26.76

RIDGE ROAD & MACARTHUR AVENUE WATERLINE IMPROVEMENTS - PHASE 1

Baughman Company, P.A.
315 Ellis St. Wichita, KS 67211 P 316-262-2271 F 316-262-0149
ENGINEERING | SURVEYING | PLANNING | LANDSCAPE ARCHITECTURE

SHEET
4
OF
15

Design: TPV
Drawn: TPV
Approved: TPV
Scale: NOTED

September 2016