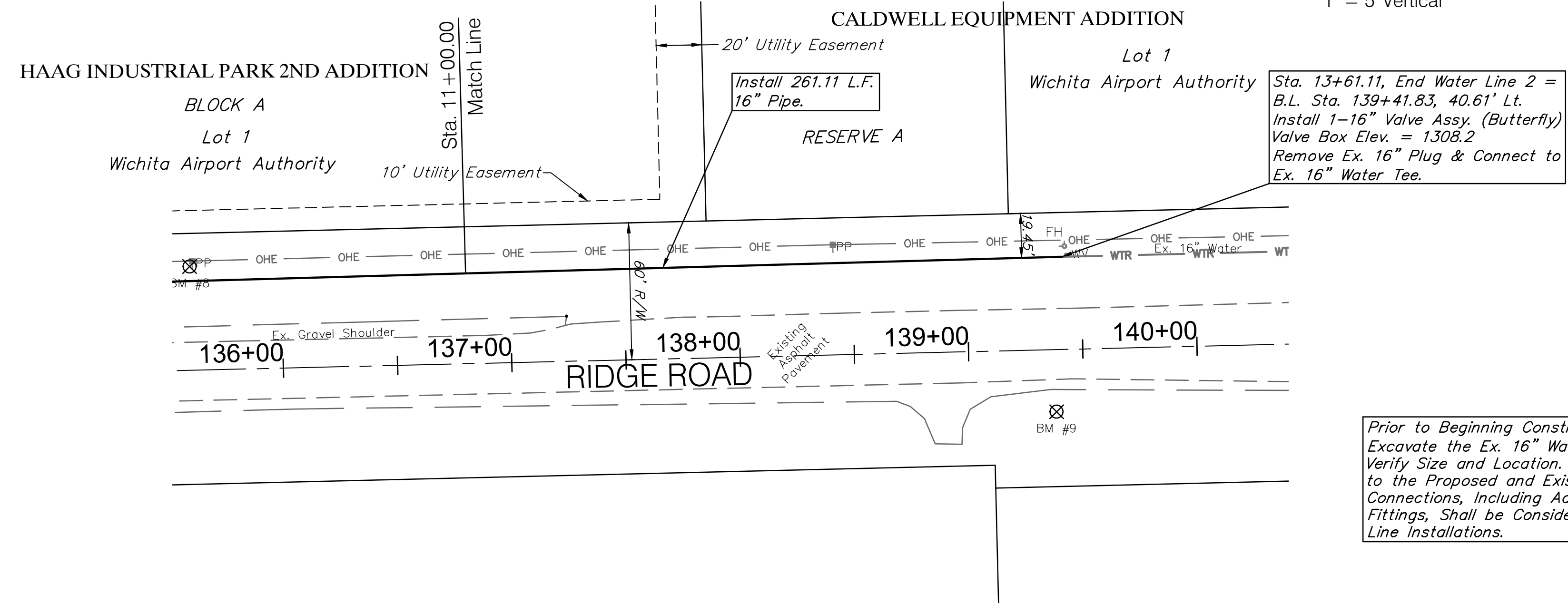
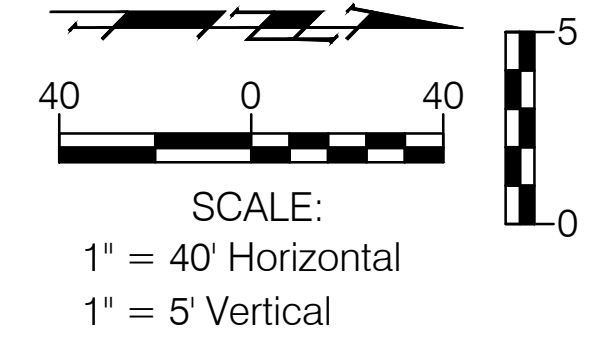
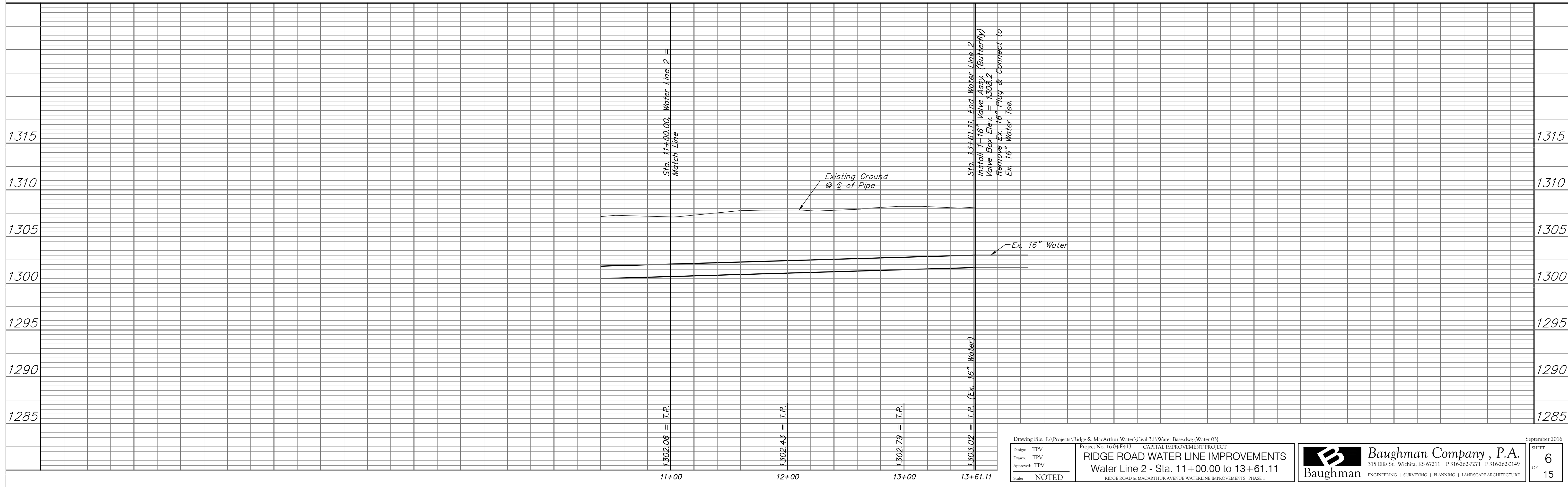
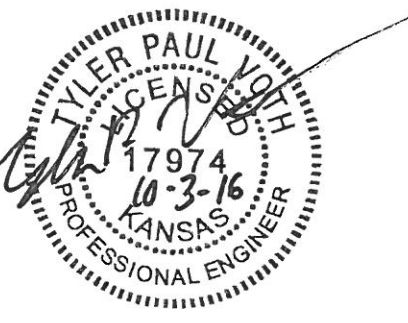


BM #9 - Chiseled "X" in the South Return of the Concrete Drive to the Cessna Property.  
Elev. = 1310.56 (NAVD 88)



Prior to Beginning Construction, The Contractor Shall Excavate the Ex. 16" Water Line at Sta. 13+61.11 to Verify Size and Location. All Necessary Adjustments to the Proposed and Existing Water Lines to Make the Connections, Including Additional Water Line and Fittings, Shall be Considered *SUBSIDIARY* to the Water Line Installations.



Drawing File: E:\Projects\Ridge & MacArthur Water\Civil 3D Water Base.dwg (Water 01)  
Project No. 1604E413 CAPITAL IMPROVEMENT PROJECT  
RIDGE ROAD WATER LINE IMPROVEMENTS  
Water Line 2 - Sta. 11+00.00 to 13+61.11  
RIDGE ROAD & MACARTHUR AVENUE WATERLINE IMPROVEMENTS - PHASE 1

**Baughman Company, P.A.**  
315 Ellis St. Wichita, KS 67211 P 316-262-7271 F 316-262-0149  
ENGINEERING | SURVEYING | PLANNING | LANDSCAPE ARCHITECTURE

September 2016  
SHEET 6 OF 15