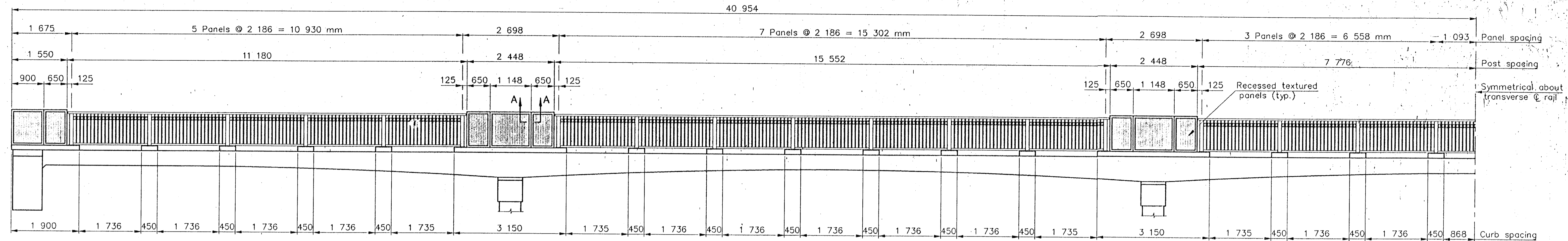
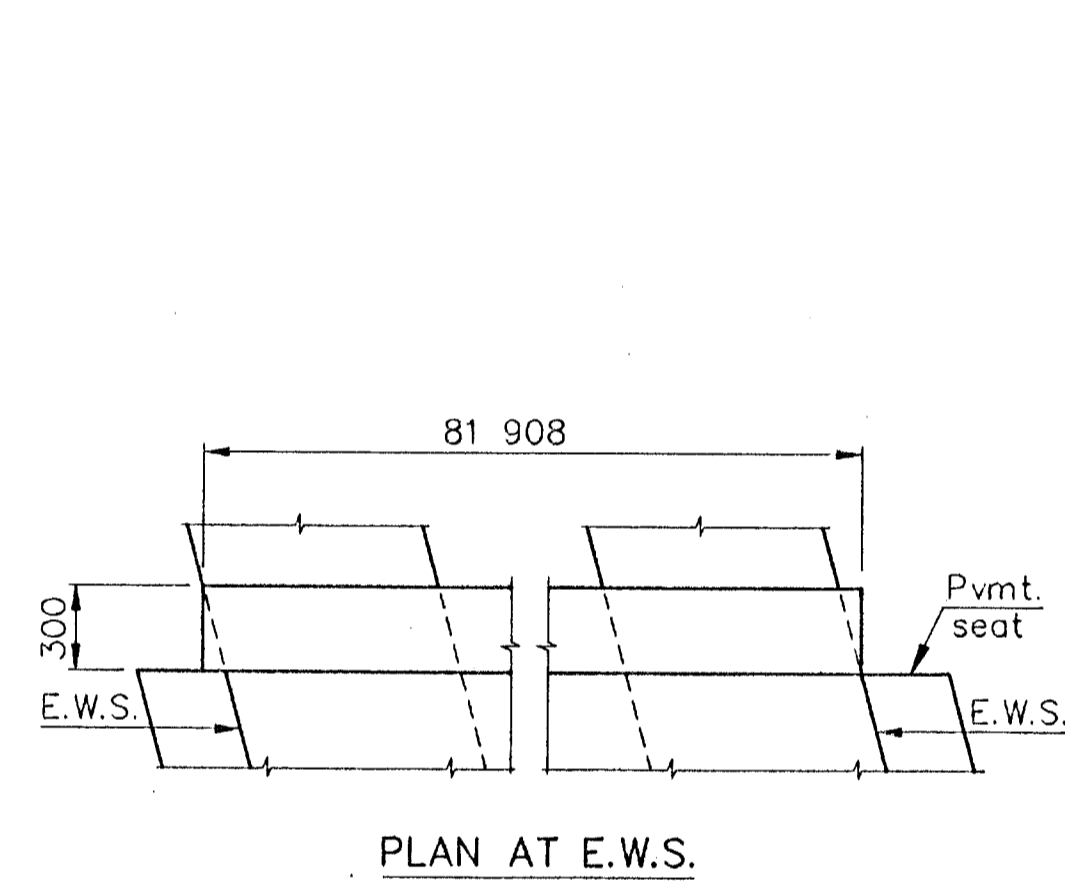


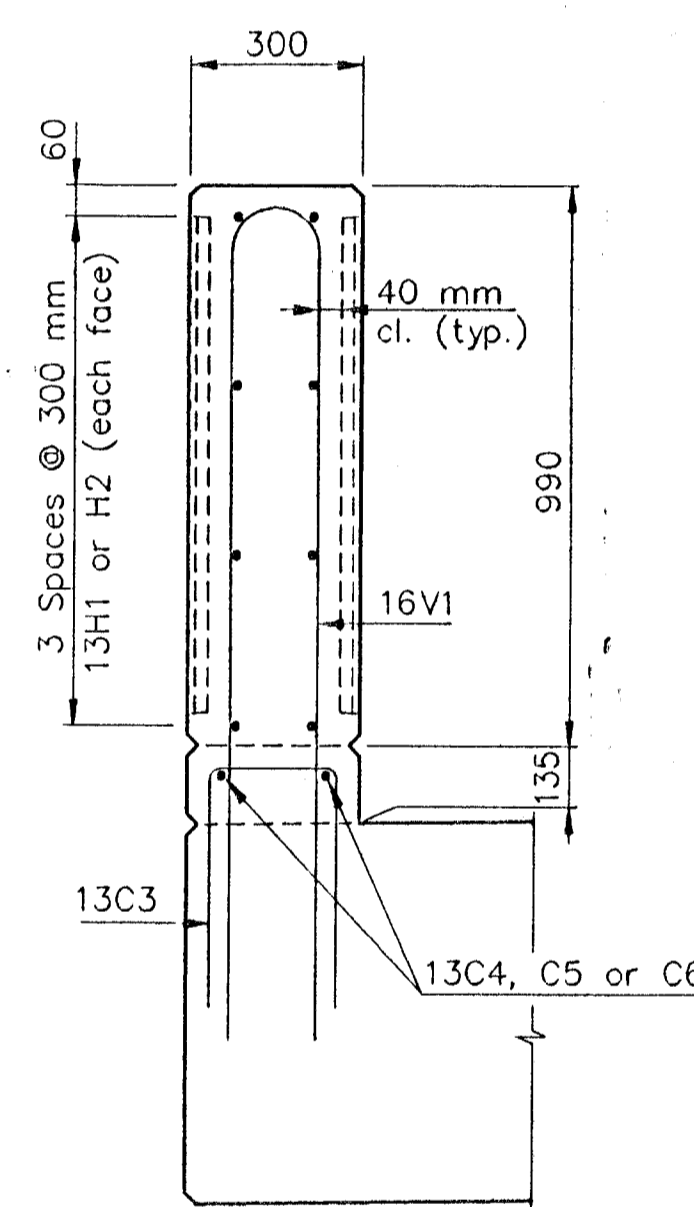
STATE	PROJECT NO.	YEAR	SHEET NO.	TOTAL SHEETS
KANSAS	87 N-0230-01	2003	34	73



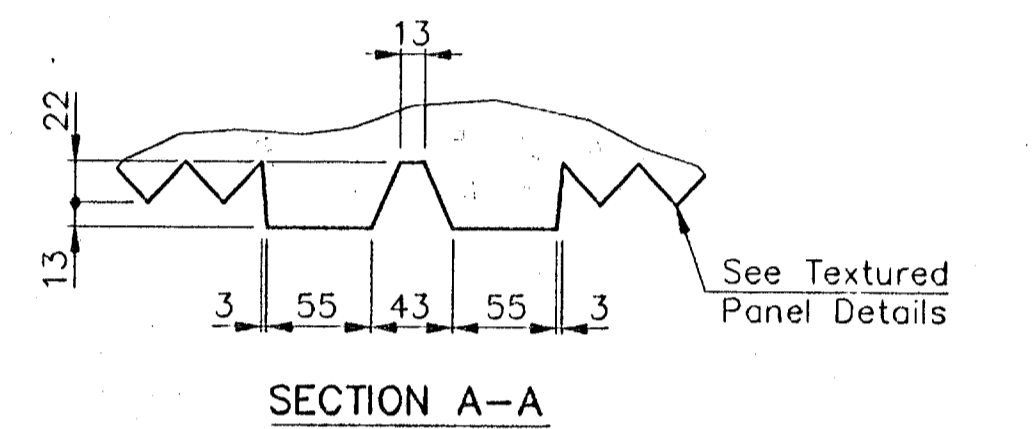
ELEVATION



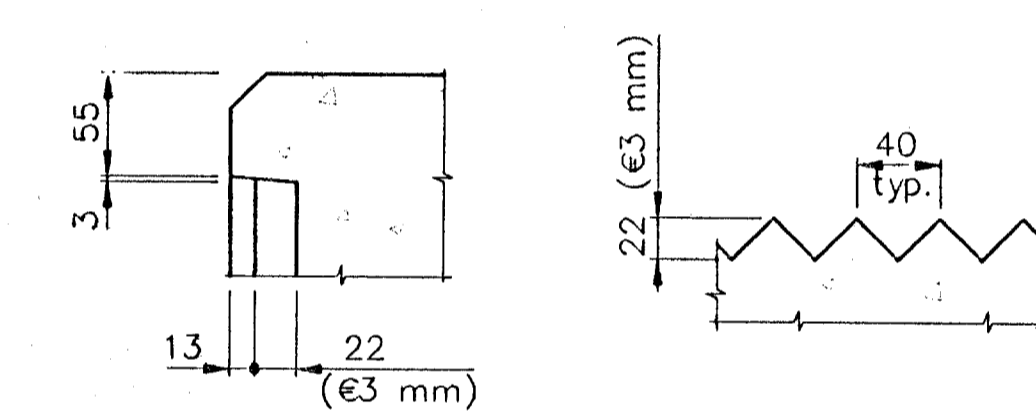
PLAN AT E.W.S.



TYPICAL SECTION



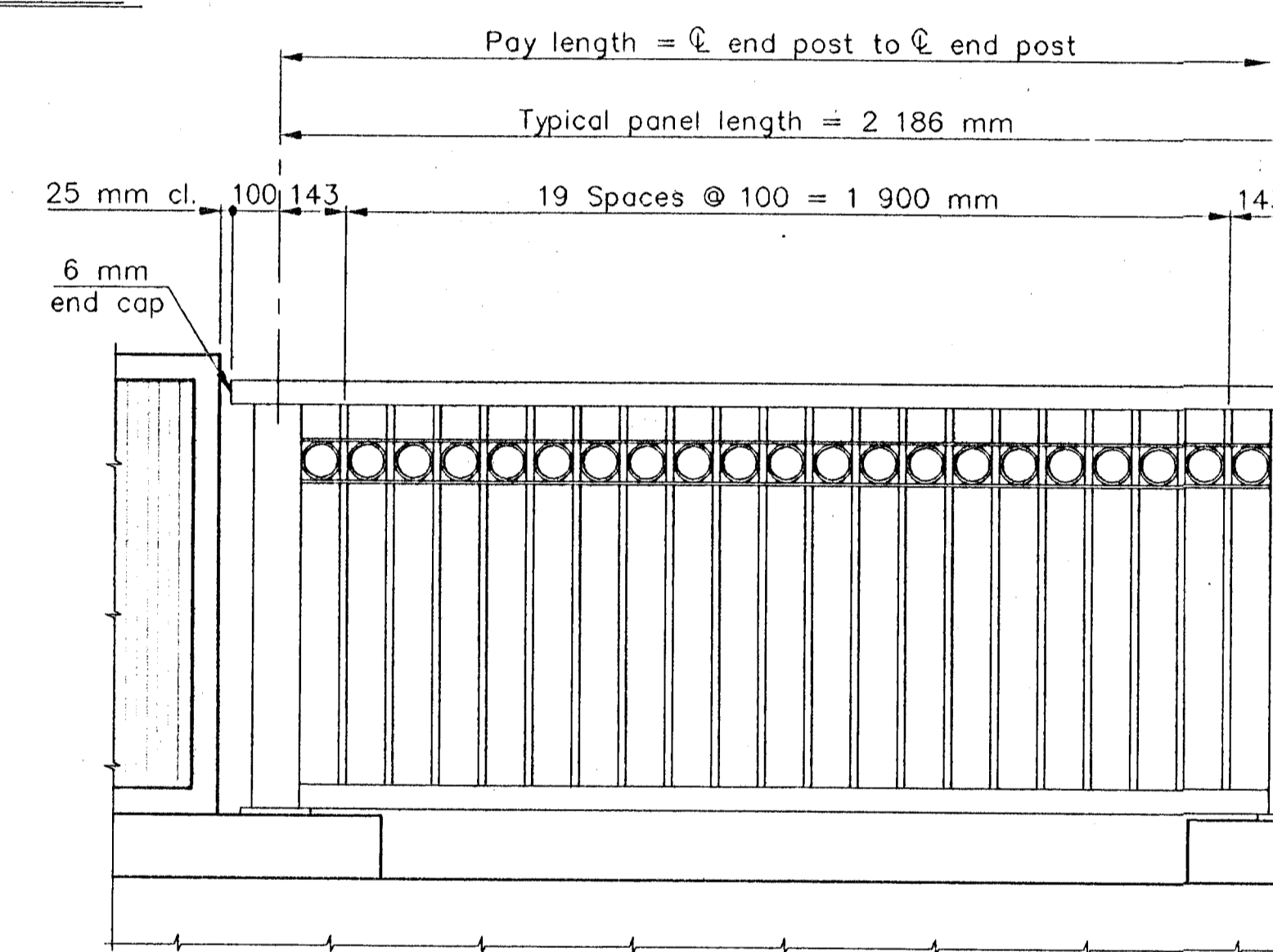
SECTION A-A



TEXTURED PANEL DETAILS

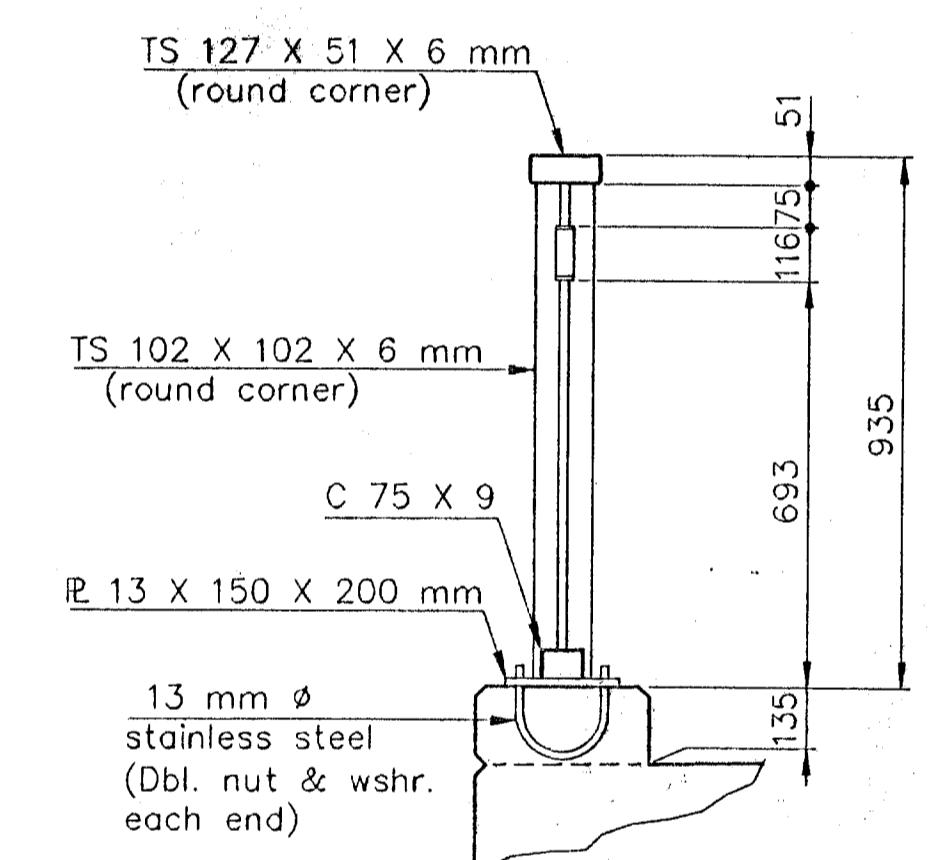
(Fractured Fin)

Note: Minor variations to the above pattern may be submitted to the Engineer for approval.

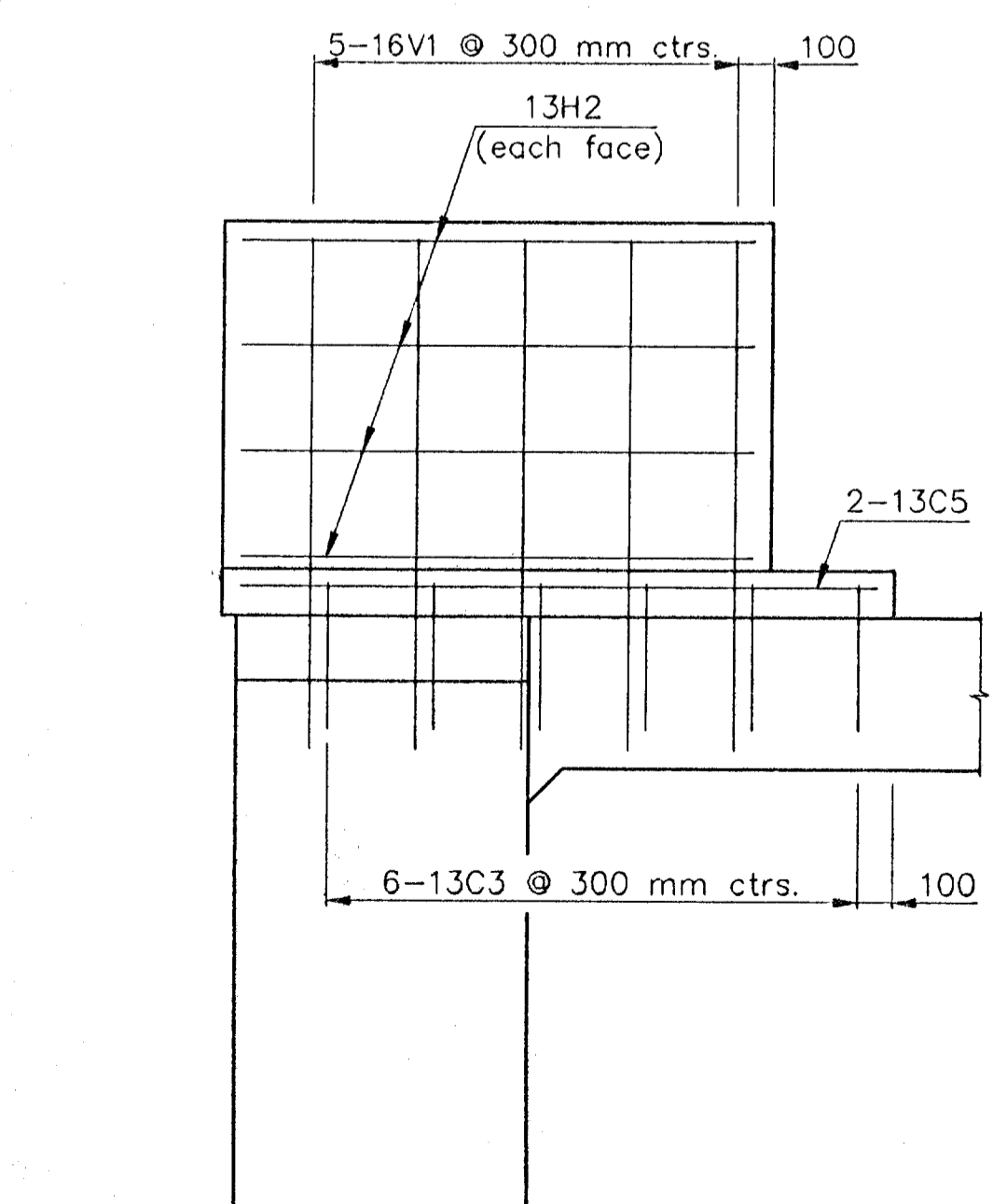


ELEVATION

STEEL HANDRAIL DETAILS

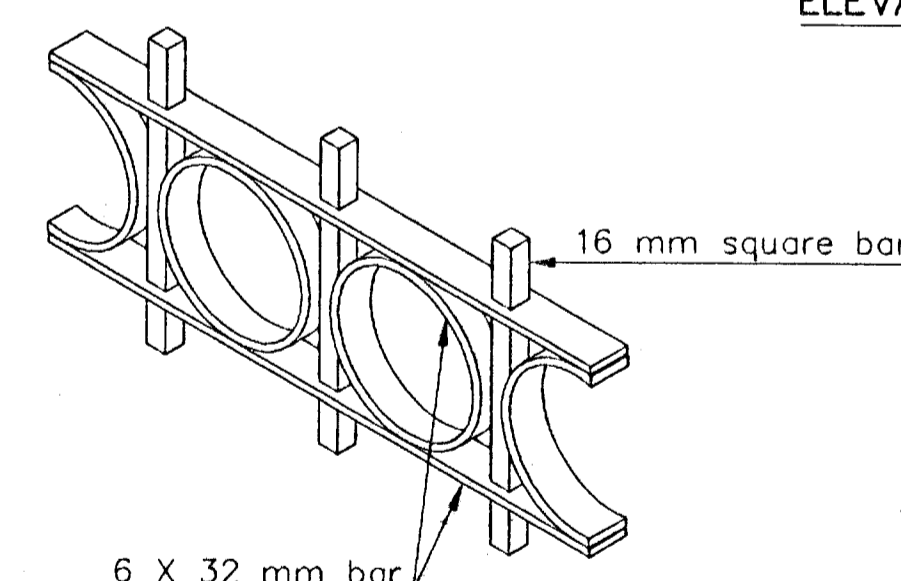
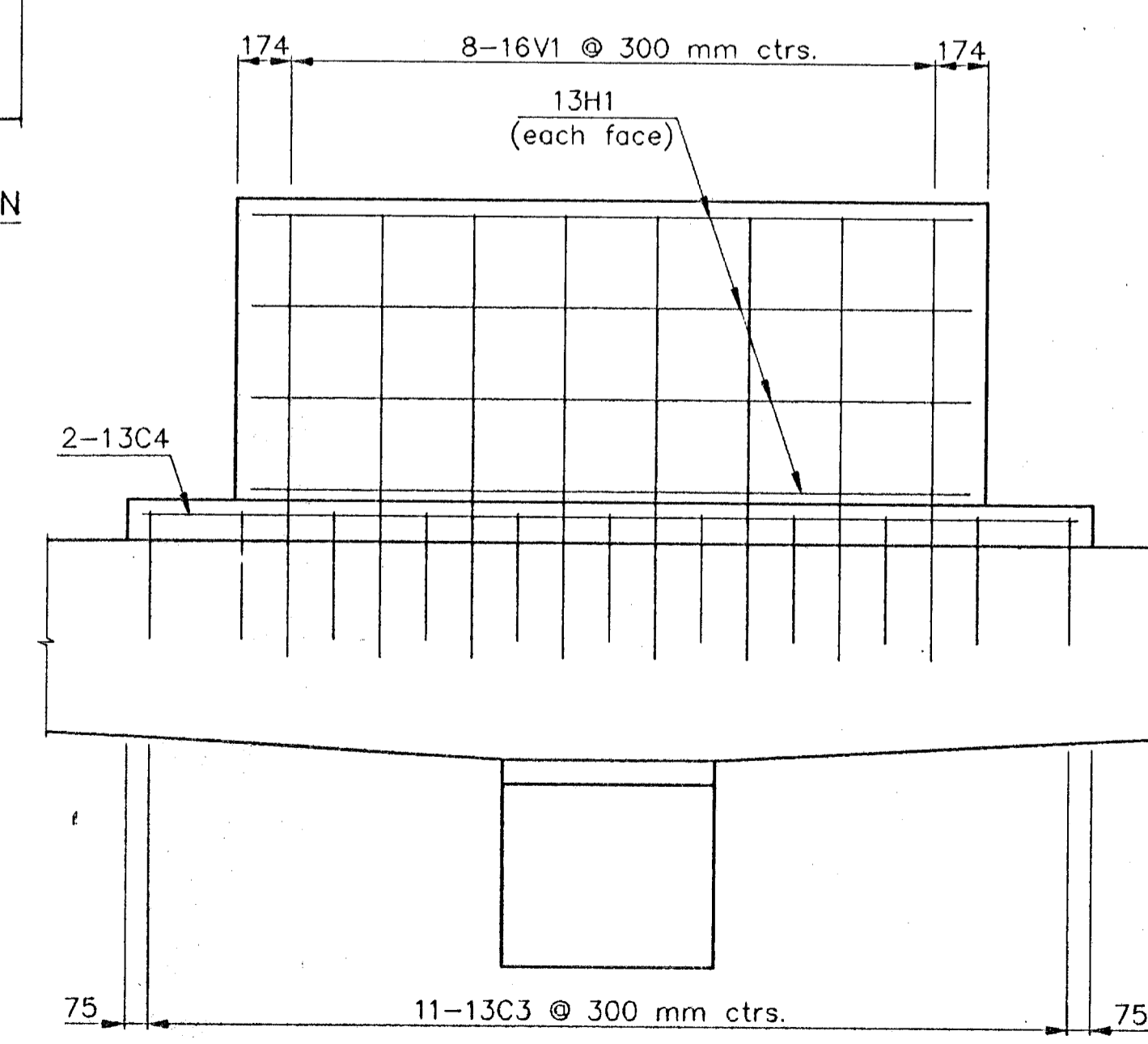


TYPICAL SECTION

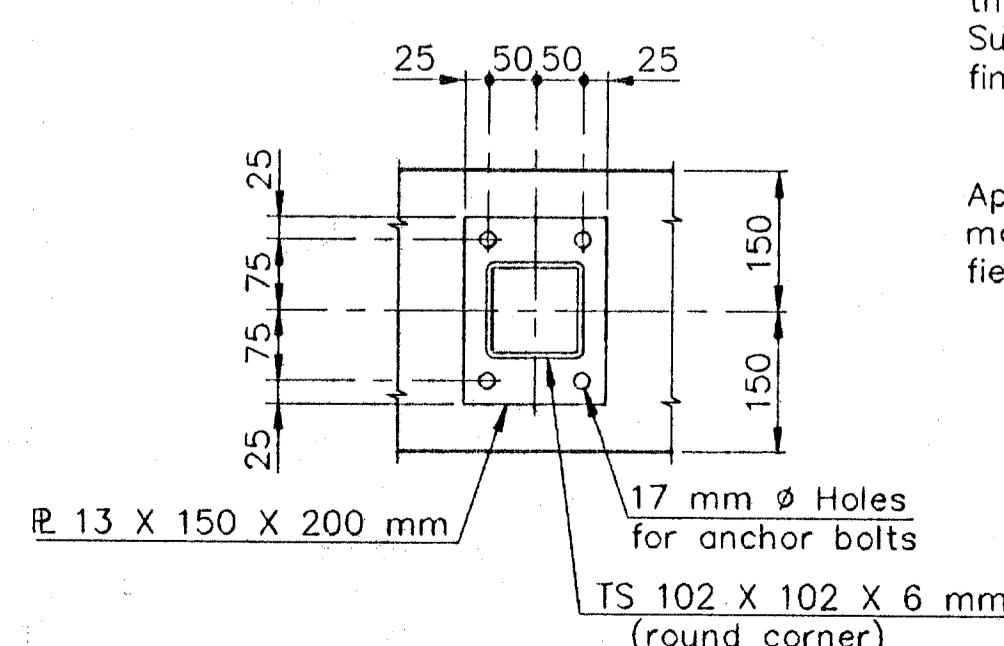


ELEVATION

CURB AND POST DETAILS



ISOMETRIC DETAIL



BASE PLATE

GENERAL NOTES

Structural tubing for the top rail and posts shall conform to ASTM A500M, Grade B. All remaining structural steel shall conform to ASTM A709M (Grade 250).

All elements of the rail assembly shall be galvanized and painted after fabrication. Galvanizing shall be done in accordance with the requirements of the KDOT Specifications. Furnish a three component paint system consisting of a 2 Component 98% Solids Polymeric Epoxy Amido-Amine Primer Tiecoat (1-2 mils dry film thickness) and a high-build polyurethane finish coat. Supply the finish coat in the color black. Furnish a finish coat that conforms to the following requirement: High-Build Polyurethane Finish Coat..... KDOT Special Provisions 90P-186-R2

Apply the point system as recommended by the manufacturer. Touch-up the painted handrail in the field as necessary.

Metal handrails shall be constructed according to Section 709 of the Standard Specifications.

The rails shall be set parallel to the bridge wearing surface. All posts and pickets shall be set vertical. Shims may be used between the concrete and the base plates.

All top and bottom handrail-to-post welded connections shall be ground smooth. No field welding will be permitted. The Contractor shall submit shop drawings to the Engineer for approval prior to fabrication.

All material, labor, splices, shims and installation shall be paid for under the bid item "Handrail (Metal) (935 mm)". The handrail is to be bid on a per meter basis from centerline of posts as shown in the details and is measured horizontally (level). Concrete posts and bases are paid for as concrete and reinforcing steel.

PROJECT NO. 87 N-0230-01

PEDESTRIAN RAIL DETAILS

13TH STREET NORTH OVER COWSKIN CREEK

STA. 1+883

CITY OF WICHITA

Cook, Flatt & Strobel
ENGINEERS, P.A.

DESIGNED	KMB	SCALE
DETAILED	DEG	DATE
QUANTITIES		SHEET 34 OF 73

J:\02517\DWG5\FED 1:40 (1:04)