

GENERAL NOTES:

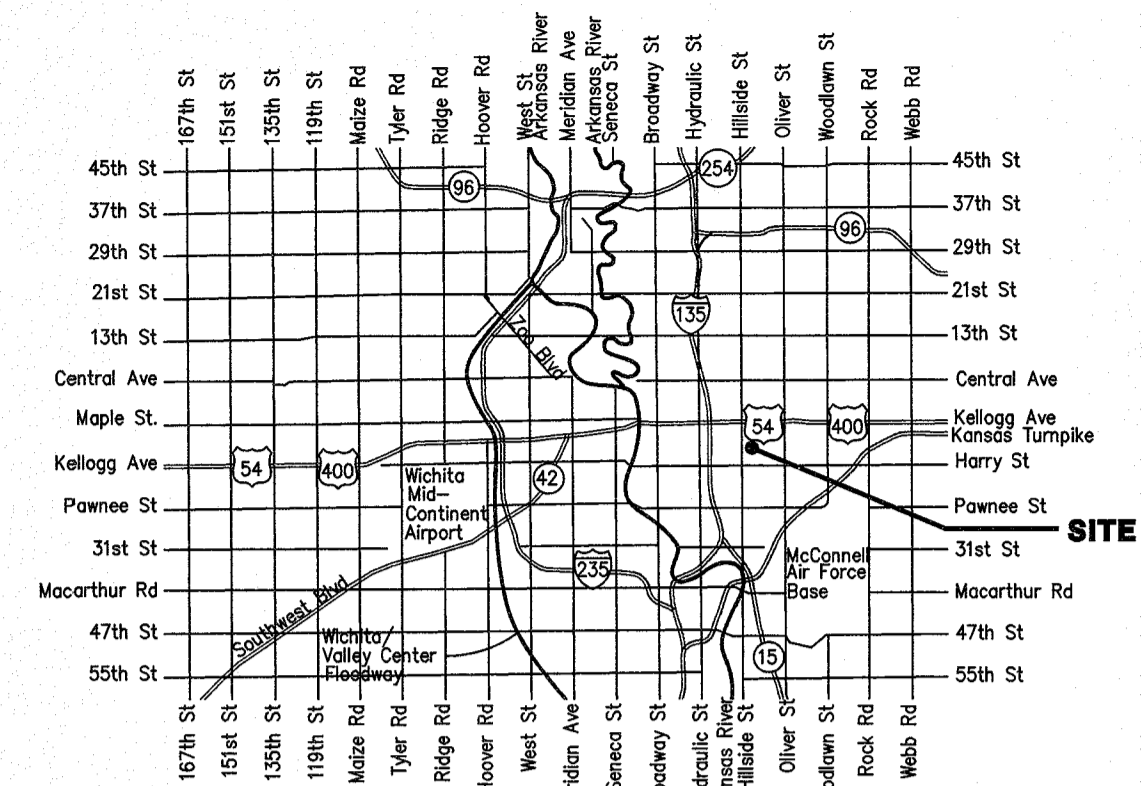
- The Contractor shall comply with all applicable safety regulations. All construction shall be completed following current City Standard Specifications and Special Provisions.
- Contractor will be required to provide notice to utility companies a minimum of seventy-two (72) hours prior to any excavation, as follows:
 Kansas One-Call 687-2470
 The Contractor must notify the following in case of an emergency:
 AT&T 1-800-246-8464
 Black Hills Energy 1-800-694-8989
 City of Wichita Water 1-316-268-4555
 City of Wichita Sewer 1-316-268-4073
 City of Wichita Stormwater 1-316-268-4090
 City of Wichita Traffic 1-316-268-4034
 Cox Communications 1-888-249-3530
 Kansas Gas Service 1-888-482-4950
 Westar Energy 1-800-544-4857
- Utility service lines, poles, etc. are to be adjusted as necessary by others prior to construction unless the plans specifically call for their adjustment by the Contractor or unless the plans specifically identify a utility to be adjusted by its owner during construction. Existing utilities and their location, as shown on the plans, represent the best information obtainable for design. The Contractor will be required to work around existing utilities within the right-of-way which do not conflict with proposed construction.
- Rubble from the removal of miscellaneous structures and excess excavation which is to be wasted shall be disposed of on sites to be provided by the Contractor. These sites shall be approved by the Engineer as to suitability, appearance and site location. Locations, in the opinion of the Engineer, that will leave an unsightly appearance will not be approved. All disposal sites must be approved by the Kansas Department of Health and Environment. Material either stockpiled or disposed of in a flood plain would require a Kansas State Board of Agriculture permit. Any material dumped in waters of the United States or wetlands is subject to U.S. Corps of Engineers permitting regulations. Any material buried or stockpiled beyond approved construction limits would require additional archeological investigations unless buried in a previously approved borrow location.
- Trees and shrubs in public right-of-way which are in direct conflict with proposed new construction shall be removed by the Contractor with the Engineer's approval. Trees and shrubs which are not in direct conflict with proposed new construction shall be saved and protected from damage.
- The Contractor shall give all property owners and/or tenants of developed property abutting the construction of this project a minimum of ten (10) days notice prior to start of construction.
- The Contractor shall be responsible for preserving property irons. The Contractor will be required to re-establish any property irons which are damaged or destroyed by his construction operations. Such irons shall be re-established by a licensed land surveyor in accordance with state laws.
- The Water Distribution Division shall field locate water valve one time during construction when requested by the Contractor. It shall be the Contractor's responsibility to preserve such field locations during the construction process. Water valves, valve boxes or fire hydrants damaged during construction shall be repaired by Contractor at his own expense. Valve boxes and water meters within the project limits shall be adjusted to match field grades.
- The Contractor shall notify the consultant engineer and Tom Mason with the City at 316-268-4574 with the anticipated construction start date and notify them of project completion. Staking and inspection for this project will be the responsibility of the Contractor.
- If traffic is impacted by construction, a traffic control plan must be submitted and approved by the City Traffic Engineer, Brian Coon at traffic@wichita.gov before construction can begin. The Contractor shall be responsible for all traffic control measures to facilitate construction. All construction zone markings and signage shall conform to the latest version of Manual on Uniform Traffic Control Devices (MUTCD) as published by the US Dept. of Transportation, Federal Highway Administration. All costs associated with construction markings and signage shall be the Contractors responsibility.
- All elevations shown are in NAVD 88 datum.
- All areas disturbed during construction that will not be under proposed pavement shall be restored to match existing conditions.

AS BUILT PLANS
 Contractor: McCullough Excavating
 Inspector: David Vansickle, Baughman Co.
 pdf's by: KEK, 12/6/16

STORM SEWER IMPROVEMENTS to serve

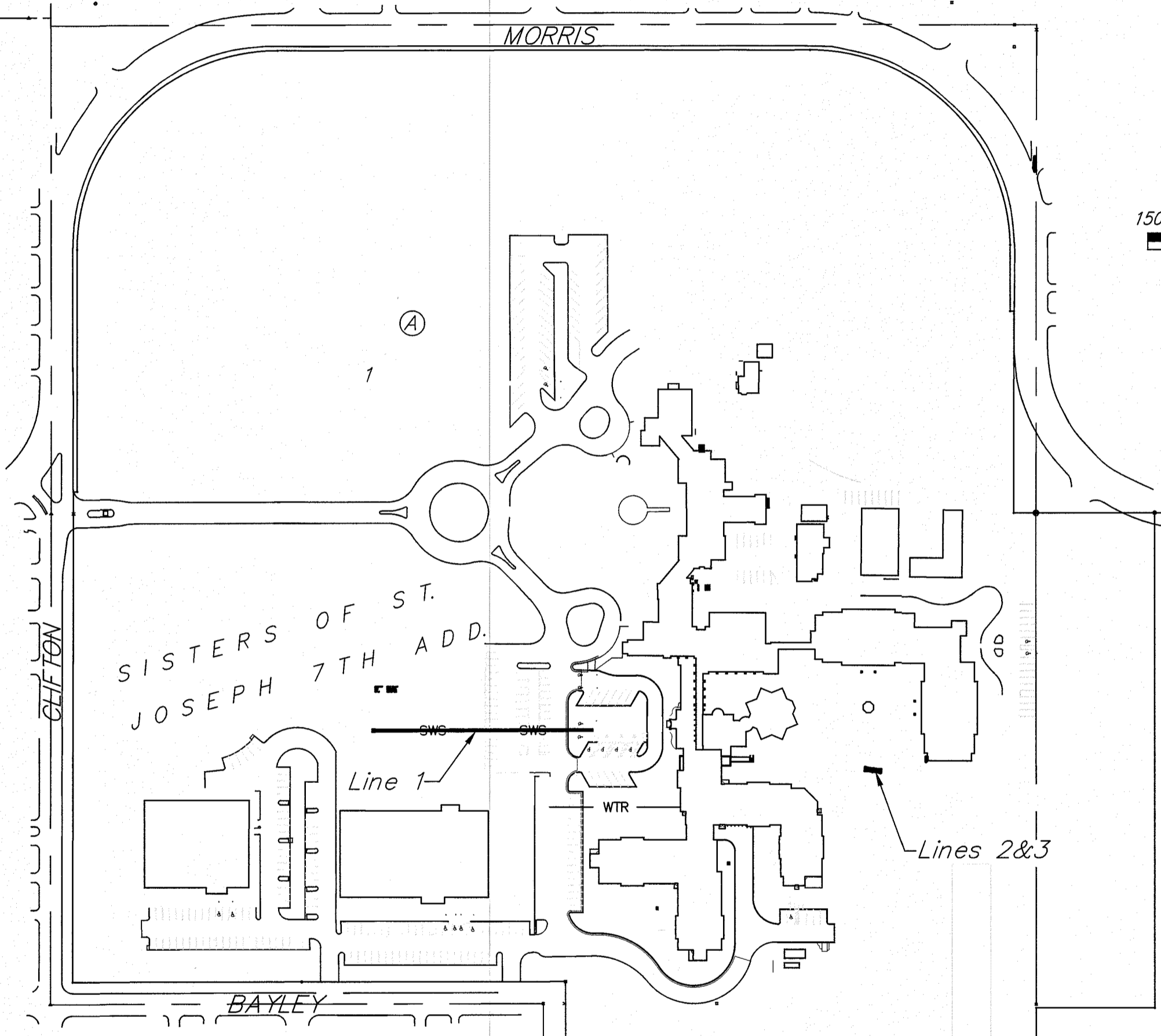
SISTERS OF ST. JOSEPH 7TH ADD.

3700 EAST LINCOLN
 CITY OF WICHITA, KANSAS
 Gary Janzen, P.E. City Engineer
 Project Number
 0368 PPD (607861)



Vicinity Map

- A portion of excess excavated material shall be mounded around manholes which extend more than one (1) foot above the existing ground. Such mound shall be constructed with new development a six (6) foot diameter flat top with 4 to 1 side slopes down to the original ground. The elevation of the flat top of the mound shall be 0.4 foot below the top to the manhole.
- Geotechnical report available upon request.
- Contractor shall limit the extent of trench openings overnight and weekends to less than 50 feet.
- Contractor shall provide positive drainage away from all manhole covers.
- City maintenance of storm sewer ends at right-of-way last structure within easement or right-of-way line.
- Any sidewalk, drive approach, or street pavement removed to construct project must have a pavement cut permit and be replaced by the City contractor. Permits can be obtained by calling 316-268-4501 or 316-268-4480.
- The inspecting firm shall submit to the City Stormwater Maintenance Division a digital copy of the CCTV inspection of the conduits and structures following construction. The digital file formation shall be compatible with the City input template. A copy of the template is available upon request at 316-268-4090.
- All existing and proposed erosion control measures including silt fencing, erosion control mat, straw bales, inlet barriers, and const. entrance shall be maintained throughout construction by the contractor and until project is accepted by the City of Wichita. The on-site engineer shall complete weekly reports on the status of erosion control measures. The contractor shall be required to comply with maintenance and/or replacement of erosion control measures as determined by the on-site engineer until project is accepted by City of Wichita. Maintenance and/or replacement of erosion control measures to be paid by L.S. bid item "Site Restoration".
- All excess excavation shall remain on-site and shall be stockpiled or spread at a location determined by the engineer.
- All areas disturbed during construction shall be seeded by others (site contractor).
- The Contractor shall not begin work on the project until the Project Inspector is assigned and on site. Any work completed without inspection will be required to be uncovered for inspection at the Contractor's expense.



Sheet Index

Title Sheet	1
Lines 1, 2 & 3	2
Erosion Control Plan	3
Copy of Plat	4-5
SWS Details SW-201, SW-401	
Erosion Control Details available at City of Wichita web site at http://www.wichita.gov/Government/Departments/PWU/Pages/Regulations.aspx	

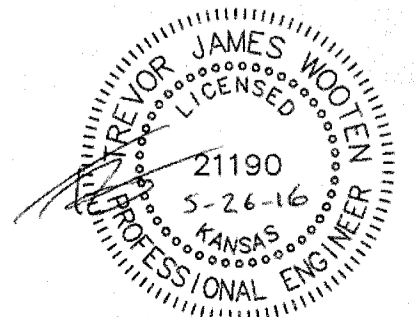
Stormwater Certification:
 Redevelopment
 These construction plans were prepared in accordance with the current Stormwater Management Regulations as set forth in the City of Wichita's Stormwater Management Ordinance 16.32 and the policies/guidelines presented in the Wichita/Sedgwick County Stormwater Manual.
 Disturbed Area = 3.7 ac., WQv=8,125 c.f.
 Water Quality Treatment: Pond
 Downstream Channel Protection: N/A
 Detention: Pond, in accordance with the master drainage plan for this property.
 The BMPs used for this development is drop inlet protection, silt fence and construction entrance.

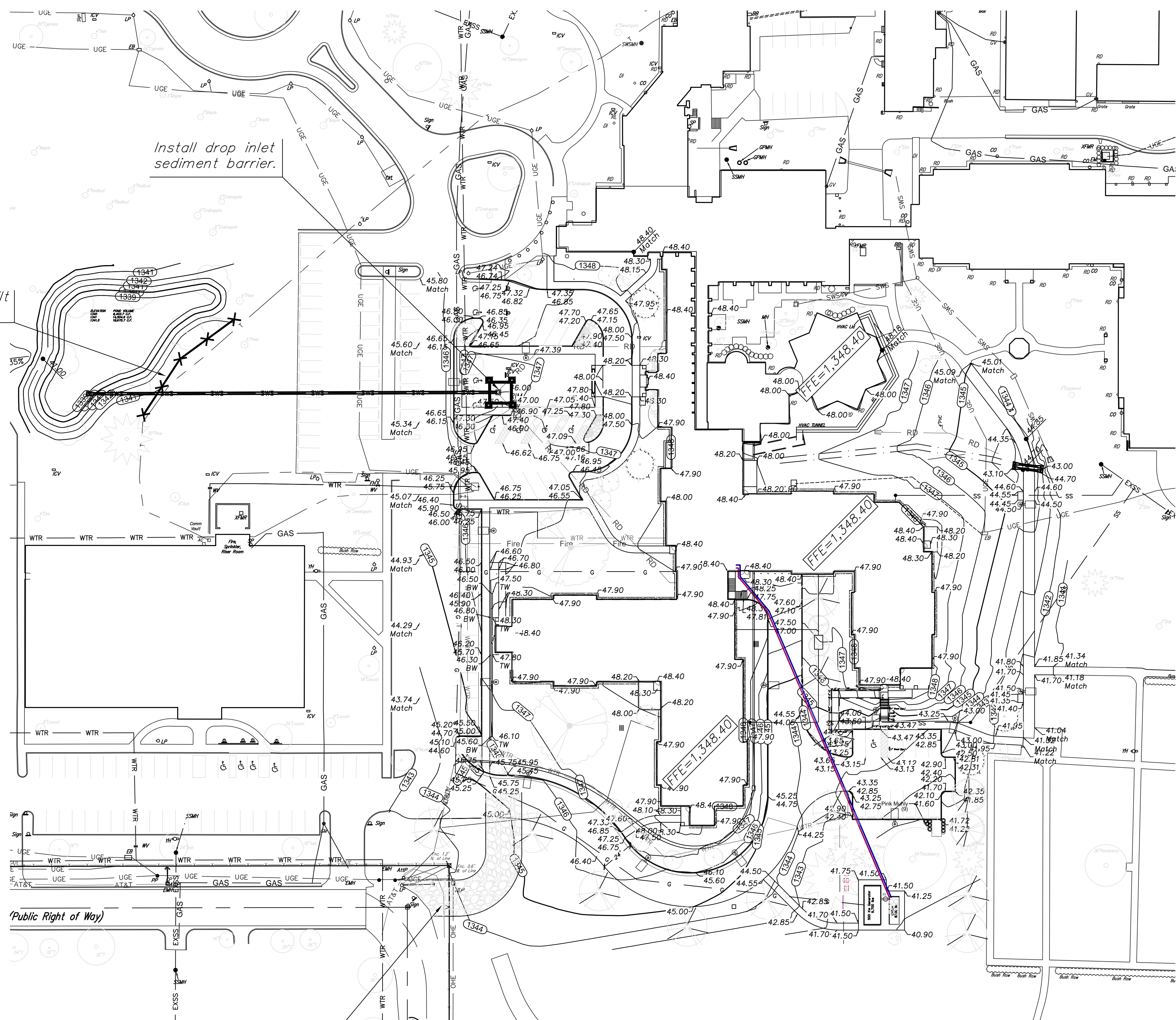
APPROVED AS NOTED
 BY WICHITA PUBLIC WORKS ENGINEERING
 AND STORMWATER DIVISION
 Engineering *Rebecca*
 Stormwater *[Signature]* 07/26/14

NOTE TO CONTRACTORS
 Inspection and testing for this project is to be provided by a Licensed Consulting Engineering Firm under contract with the Owner/Developer. Said inspection to be in accordance with the City of Wichita standard construction engineering practices and certified by a Licensed Professional Engineer in the state of Kansas. No work shall be performed by the Contractor without such inspection nor shall any work be commenced without written authorization by City Engineering. All Construction and Materials shall comply with the current City of Wichita Specifications and Standards and Special Provisions (on file and available at Wichita.gov).
 An approved copy of these plans signed by City staff are required on-site.

Benchmark

Chiseled square on top of curb,
 40.1' East & 5.9' North of point
 of curvature at West end of
 North line of Lot 1, Block A.
 ELEV. = 1343.68 NAVD88





Install drop inlet sediment barrier.

Install 100 L.F. silt fence.

Install 50'x12' gravel construction entrance.

EROSION CONTROL PLAN LEGEND
(Installation Details Found in the SWP2 Plan)

- DROP INLET PROTECTION
- CURB INLET PROTECTION
- DITCH CHECKS
- SILT FENCING
- EROSION CONTROL BERM
- BACK OF CURB PROTECTION
- EROSION CONTROL MAT
- TEMPORARY DITCH

NO SCALE

EROSION CONTROL MEASURE	INSTALL	MAINTAIN	REMOVE
BACK OF CURB PROTECTION (LF)	0	0	0
CONSTRUCTION ENTRANCE (EA)	1	0	0
CURB INLET BARRIER (EA)	0	0	0
DITCH CHECK (EA)	0	0	0
DROP INLET PROTECTION (EA)	1	0	0
EROSION CONTROL (LS)	0	0	0
EROSION CONTROL BERM (LF)	0	0	0
SILT FENCE (LF)	100	0	0
EROSION CONTROL MAT (SY)	0	0	0

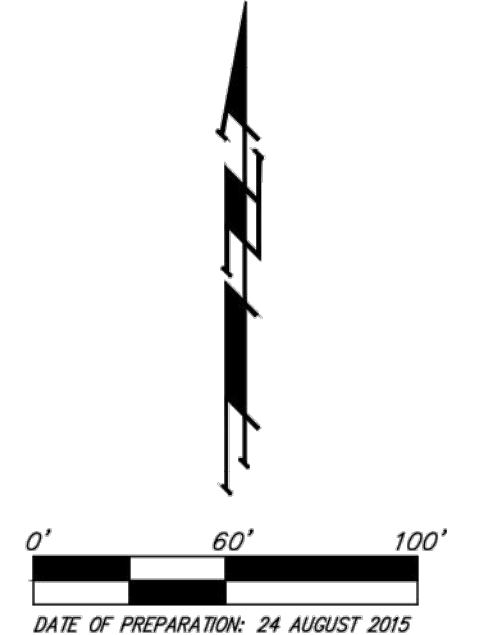
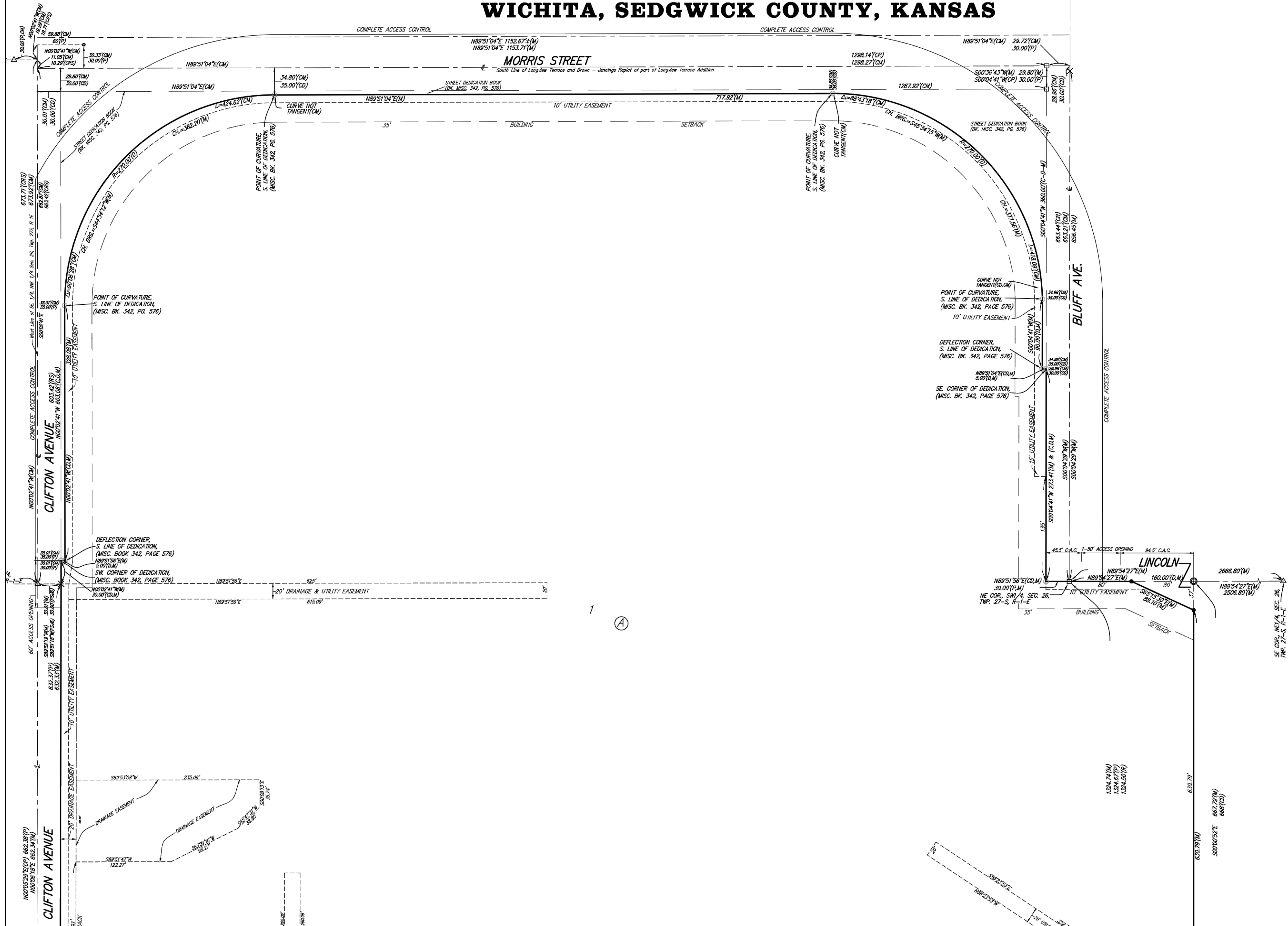
QUANTITIES ARE FOR INFORMATION ONLY! CONTRACTOR SHALL VERIFY QUANTITIES PER FINAL BID QUANTITY SHEET.

* ALL EXISTING BMPs INCLUDING CONSTRUCTION ENTRANCE, SEDIMENT BARRIERS, SILT FENCE, EROSION CONTROL BERM, AND EROSION CONTROL MAT SHALL BE MAINTAINED AND REPAIRED IF NECESSARY. REPLACEMENT OR REMOVAL OF EROSION CONTROL MEASURES TO BE PAID FOR BY L.S. BID ITEM "MAINTAIN EXISTING EROSION CONTROL BMPs"

	SISTERS OF ST. JOSEPH 7TH ADD.	
	EROSION CONTROL PLAN	
STORM WATER SEWER IMPROVEMENTS		
Baughman Company, P.A. 315 Ellis St. Wichita, KS 67211 P 316-262-7271 F 316-262-0149		
ENGINEERING SURVEYING PLANNING LANDSCAPE ARCHITECTURE		
PROJECT NUMBER	DESIGN	DRAWN
	TJW	TMS
REVISIONS:	APPROVED	DATE
	Noted	01/16
	SCALE	
	Noted	
	SHEET	
		3 OF 5
PPD.dwg		15-04-E228

SISTERS OF ST. JOSEPH 7TH ADDITION

WICHITA, SEDGWICK COUNTY, KANSAS



- = #4 Boughtman Rebar Set
 - = #4 Boughtman Rebar Found
 - = 3/4" Iron Pipe Found
 - △ = 3/4" Iron Pipe in Thimble Found
 - × = Chiseled Cross Found
 - ∅ = 1/2" Iron Pipe Found
 - ⊙ = #6 Rebar Found
 - ⊠ = #4 Rebar Found
 - ⊞ = P.K. Nail Found
 - ⊟ = Chiseled V-Notch Found
 - ⊕ = Chiseled Cross Set
 - ⊖ = Mag Nail Set
-
- (M) = MEASURED
 - (D) = DESCRIBED
 - (P) = PLATTED
 - (C) = CALCULATED
 - (CP) = CALCULATED PER PLATTED INFO.
 - (CD) = CALCULATED PER DESCRIBED
 - (DEED) = DEED DESCRIPTION
 - (C-DESC) = CALCULATED PER TRACT DESCRIPTION
 - (CM) = CALCULATED PER MEASUREMENT
 - (CR) = CALCULATED PER RECORD
 - (R) = RECORD
 - (CRS) = CALCULATED PRE RECORDED SURVEY
 - (PS.16) = PER SISTERS OF ST. JOSEPH 6TH ADDITION
 - (PS.12) = PER SISTERS OF ST. JOSEPH 2ND ADDITION

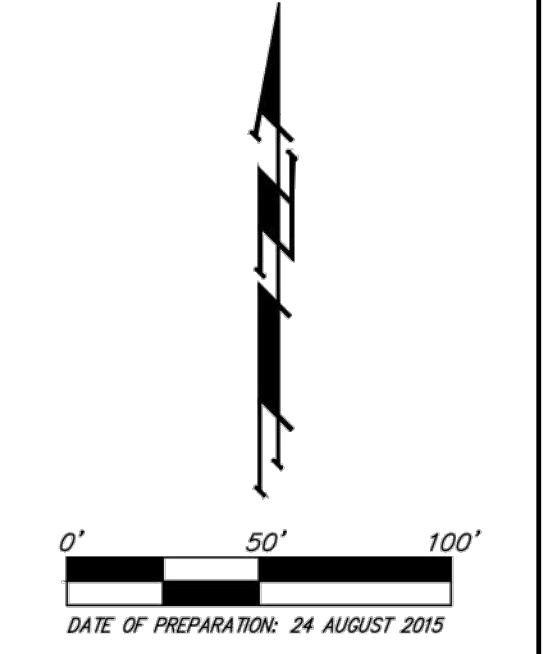
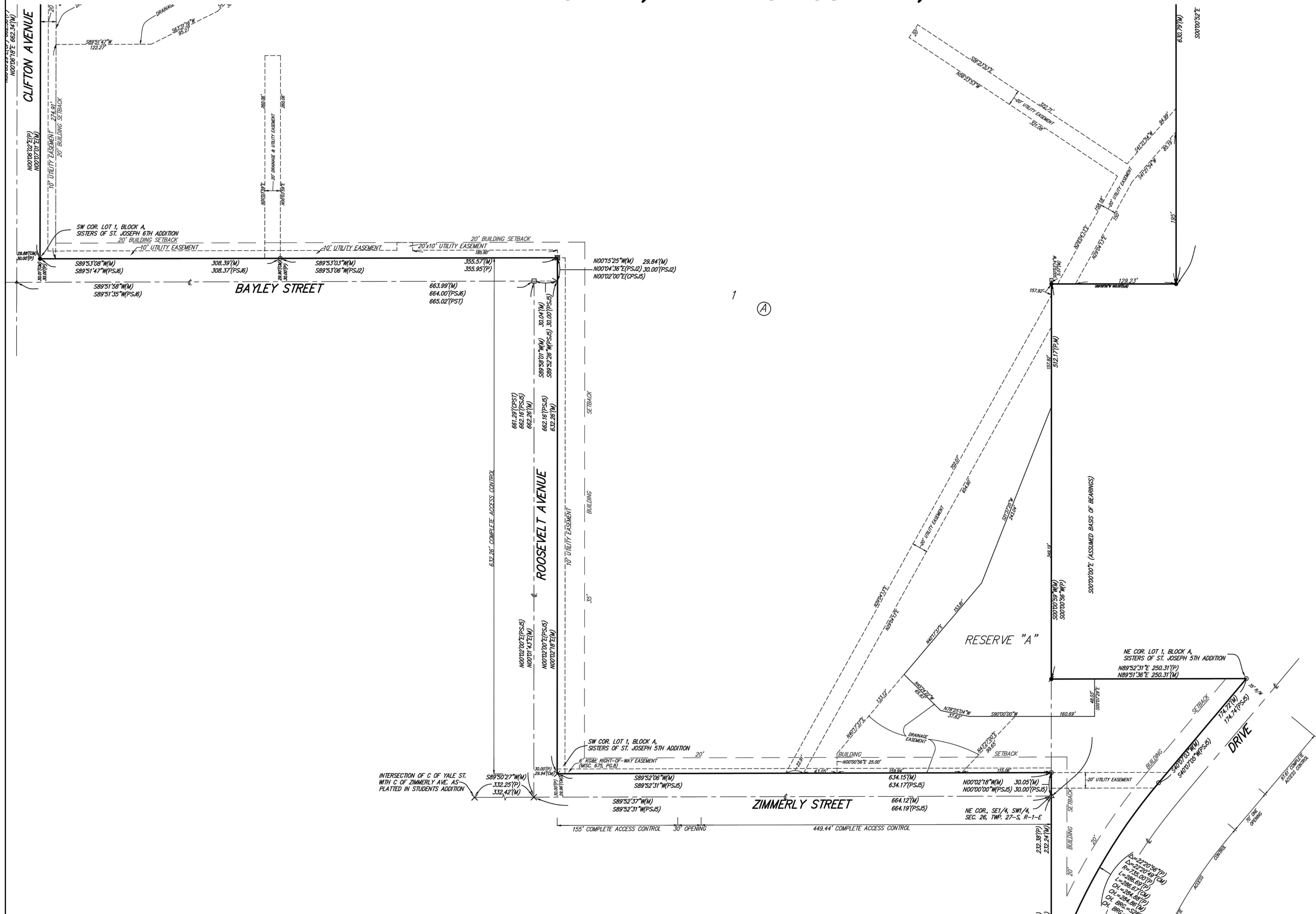
1
Ⓐ

NOTE:
ADDITIONAL BUILDING SETBACKS AND OTHER REQUIREMENTS PER SISTERS OF ST. JOSEPH PLANNED UNIT DEVELOPMENT (PUD2015-03).

NOTE:
A drainage plan has been developed for this subdivision and is on file with the City of Wichita, Kansas. Drainage intent shall remain as depicted or as modified with the approval of the City Engineer of the City of Wichita.

SISTERS OF ST. JOSEPH 7TH ADDITION

WICHITA, SEDGWICK COUNTY, KANSAS



- = #4 Baughman Rebar Set
 - = #4 Baughman Rebar Found
 - = 3/4" Iron Pipe Found
 - △ = 3/4" Iron Pipe in Thimble Found
 - × = Chiseled Cross Found
 - ∅ = 1/2" Iron Pipe Found
 - ⊙ = #6 Rebar Found
 - ⊠ = #4 Rebar Found
 - ⊞ = P.K. Nail Found
 - > = Chiseled V-Notch Found
 - ⊗ = Chiseled Cross Set
 - ⊙ = Mag Nail Set
- (M) = MEASURED
 (D) = DESCRIBED
 (P) = PLATTED
 (C) = CALCULATED
 (CP) = CALCULATED PER PLATTED INFO.
 (CD) = CALCULATED PER DESCRIBED
 (DEED) = DEED DESCRIPTION
 (C-DESC) = CALCULATED PER TRACT DE
 (CM) = CALCULATED PER MEASUREMENT
 (CR) = CALCULATED PER RECORD
 (R) = RECORD
 (CRS) = CALCULATED PER RECORDED SURVEY
 (PS.6) = PER SISTERS OF ST. JOSEPH 6
 (PS.2) = PER SISTERS OF ST. JOSEPH 2

NOTE:
 ADDITIONAL BUILDING SETBACKS AND OTHER REQUIREMENTS PER SISTERS OF ST. JOSEPH PLANNED UNIT DEVELOPMENT (PID) 2015-031.

NOTE:
 A drainage plan has been developed for this subdivision on the City of Wichita, Kansas. Drainage intent shall remain as modified with the approval of the City Engineer of the City of Wichita, Kansas.

05 OF 05