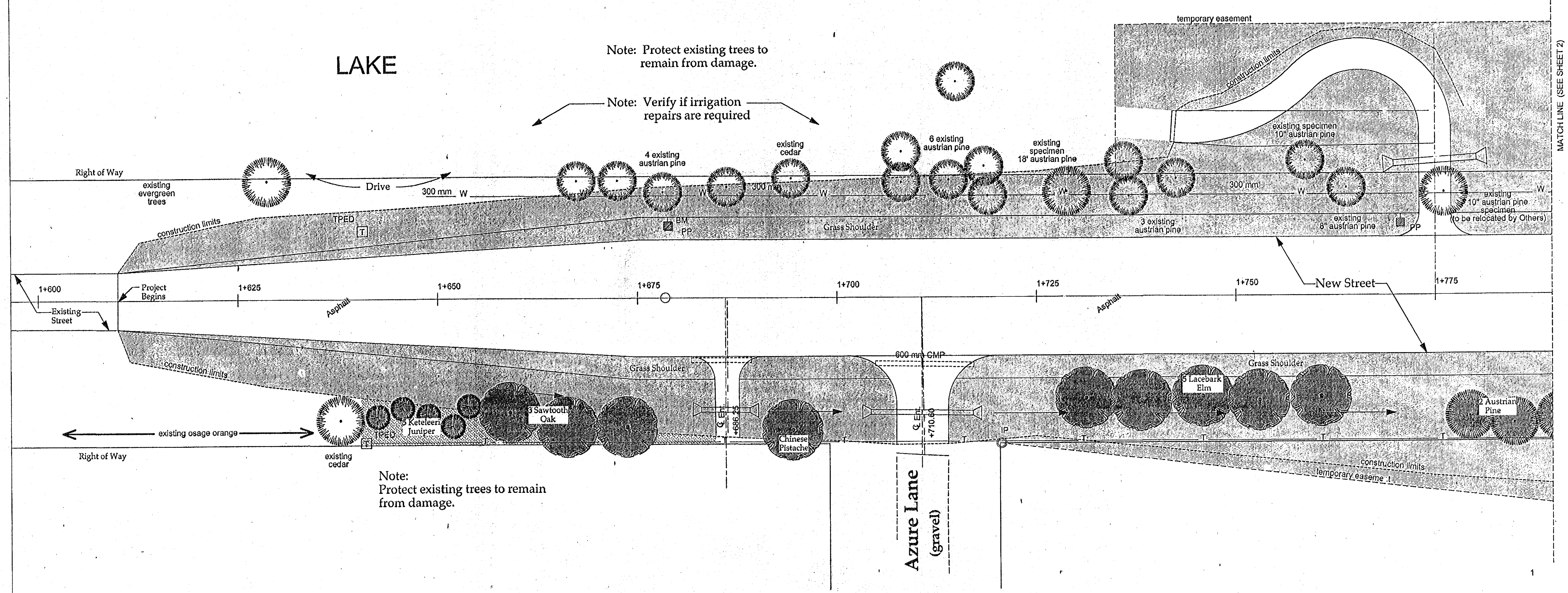


F.H.W.A. REGION NO.	STATE	PROJECT NO.	FISCAL YEAR	SHEET NO.	TOTAL SHEETS
7	KANSAS	87 N-0230-01	2003	48	73



Planting Specifications

- Landscape work shall follow Part 900 Landscaping and Irrigation of the City of Wichita Standard Specifications (See Public Works Engineering section of www.wichita.gov). This includes, but is not limited to, tree planting and grass installation methods, staking, irrigation repairs, payment, acceptance, and guarantee. Verify need, if any, for irrigation repairs with Engineer. Specifications noted herein shall define specific work operations, and supersede the Standard Specifications.
- The Landscape Contractor shall provide all plants, materials, labor and equipment to complete the installation of trees and of grass areas according to these specifications and the Landscape Plan. The Landscape Contractor shall be responsible for repair and seeding of disturbed areas.
- Rough grading shall be by the General Contractor. The Landscape Contractor shall be responsible for finished grading prior to grass installation and planting operations.
- Prior to landscape work, flag all underground utilities by calling Kansas One-Call (Phone: 1-800-344-7233).
- Notify the Engineer of variances between the plan and site conditions which affect planting operations.
- The Landscape Contractor shall be responsible to coordinate landscape work with other Contractors affected by landscape work.
- All trees shall be staked by a single or double stake method in accordance with the City Standard Specifications.

Materials and Installation Requirements

Materials shall be approved by the Engineer before start of work. Materials and grass may be rejected at any time during the installation.

Plant Materials shall meet current American National Standards Institute standards and exhibit a vigorous and healthy condition.

Mulch for tree planting to be an approved chipped tree service mulch free of debris, insect, and disease damage.

Grass Sod to be an approved turf type fine-bladed fescue blend. Sod pieces may exceed 1 SY in size.

Soil Amendments Use 4 parts soil from excavation to 1 part "Back to Earth" cotton bur compost.

Fertilizer for planting backfill to be Milorganite (6-2-0) or other approved product installed per Manufacturer's instructions.

Tree Wrap shall be 4" Forces wrap or other approved product (i.e. DeWilt Tree Wrap). Securely wrap from ground level to second level of branches on the trunk. Wrap shall be used for Autumn Blaze Maples only.

Grass

Total disturbed area inside construction limits and temporary easement, to receive grass sod, is about 3.0 acres (130,625 sf). In addition, disturbed areas caused by tree planting operations outside construction limits shall be sodded (approximately 6,700 sf).

Bid Note

Quantities are for information only. Landscaping and Sod Installation will be bid as one lump sum. All other specified materials and operations for tree and grass installation shall be subsidiary to the lump sum bid.

Plant Schedule				
Quantity	Common Name	Botanical Name	Size	Specification
TREES				
9	Autumn Blaze Maple	<i>Acer x freemanii 'Autumn Blaze'</i>	2" - 2 1/2" Cal	B&B
20	Keteleeri Juniper	<i>Juniperus chinensis 'Keteleeri'</i>	8"-7" height	B&B
2	Prairie Crabapple	<i>Malus sp. 'Prairie'</i>	1 3/4" - 2" Cal	B&B
7	Austrian Pine	<i>Pinus nigra var. nigra</i>	7"-8" height	B&B
2	Chinese Pistache	<i>Pistacia chinensis</i>	2" - 2 1/2" Cal	B&B
10	Sawtooth Oak	<i>Quercus acutissima</i>	2" - 2 1/2" Cal	B&B
7	Swamp White Oak	<i>Quercus bicolor</i>	2" - 2 1/2" Cal	B&B
7	Lacebark Elm	<i>Ulmus parvifolia</i>	2" - 2 1/2" Cal	B&B
64	Total Trees			

Note: In case of a discrepancy between the Plant Schedule and the Plans, the Plans shall govern.

LANDSCAPE ARCHITECTS PLANNERS

rice-foster associates

1300 East 2nd Street
Wichita, KS 67202
Tel: 316-261-1011
Fax: 316-261-0118

PROJECT NO. 87 N-0230-01

LANDSCAPE
13 th ST. NORTH OVER
COWSKIN CREEK

CITY OF WICHITA
SEDGWICK COUNTY

COOK, FLATT & STROBEL
ENGINEERS, P.A.

DESIGNED	SCALE	NO SCALE
DETAILS	DATE	
QUANTITIES	SHEET	OF