

GENERAL NOTES

- THE CONTRACTOR SHALL COMPLY WITH ALL APPLICABLE SAFETY REGULATIONS. ALL CONSTRUCTION SHALL BE COMPLETED FOLLOWING CURRENT CITY STANDARD SPECIFICATIONS AND SPECIAL PROVISIONS.
- CONTRACTOR WILL BE REQUIRED TO PROVIDE NOTICE TO UTILITY COMPANIES A MINIMUM OF SEVENTY-TWO (72) HOURS PRIOR TO ANY EXCAVATION, AS FOLLOWS:

KANSAS ONE CALL	1-800-344-7233
	OR 1-316-887-2470

THE CONTRACTOR MUST NOTIFY THE FOLLOWING IN CASE OF AN EMERGENCY:

AT&T	1-800-246-8464
BLACK HILLS ENERGY	1-800-694-8989
CITY OF WICHITA WATER	1-316-268-4555
CITY OF WICHITA SEWER	1-316-268-4073
CITY OF WICHITA STORMWATER	1-316-268-4090
CITY OF WICHITA TRAFFIC	1-316-268-4034
COX COMMUNICATIONS	1-888-249-3530
KANSAS GAS SERVICE	1-888-482-4950
WESTAR ENERGY	1-800-544-4857
- UTILITY SERVICE LINES, POLES, ETC. ARE TO BE ADJUSTED AS NECESSARY BY OTHERS PRIOR TO CONSTRUCTION UNLESS THE PLANS SPECIFICALLY IDENTIFY A UTILITY TO BE ADJUSTED BY ITS OWNER DURING CONSTRUCTION. EXISTING UTILITIES AND THEIR LOCATION, AS SHOWN ON THE PLANS, REPRESENT THE BEST INFORMATION OBTAINABLE FOR DESIGN. THE CONTRACTOR WILL BE REQUIRED TO WORK AROUND EXISTING UTILITIES WITHIN THE RIGHT-OF-WAY WHICH DO NOT CONFLICT WITH PROPOSED CONSTRUCTION.
- RUBBLE FROM THE REMOVAL OF MISCELLANEOUS STRUCTURES AND EXCESS EXCAVATION WHICH IS TO BE WASTED SHALL BE DISPOSED OF ON SITES TO BE PROVIDED BY THE CONTRACTOR. THESE SITES SHALL BE APPROVED BY THE ENGINEER AS TO SUITABILITY, APPEARANCE AND SITE LOCATION. LOCATIONS, IN THE OPINION OF THE ENGINEER, THAT WILL LEAVE AN UNSIGHTLY APPEARANCE WILL NOT BE APPROVED. ALL DISPOSAL SITES MUST BE APPROVED BY THE KANSAS DEPARTMENT OF HEALTH AND ENVIRONMENT. MATERIAL EITHER STOCKPILED OR DISPOSED OF IN A FLOOD PLAIN WILL REQUIRE A KANSAS STATE BOARD OF AGRICULTURE PERMIT. ANY MATERIAL DUMPED IN WATERS OF THE UNITED STATES OR WETLANDS IS SUBJECT TO U.S. CORPS OF ENGINEERS PERMITTING REGULATIONS. ANY MATERIAL BURIED OR STOCKPILED BEYOND APPROVED CONSTRUCTION LIMITS WILL REQUIRE ADDITIONAL ARCHAEOLOGICAL INVESTIGATIONS UNLESS BURIED IN A PREVIOUSLY APPROVED BORROW LOCATION.
- TREES AND SHRUBS IN PUBLIC RIGHT-OF-WAY WHICH ARE IN DIRECT CONFLICT WITH PROPOSED NEW CONSTRUCTION SHALL BE REMOVED BY THE CONTRACTOR WITH THE ENGINEERS APPROVAL. TREES AND SHRUBS WHICH ARE NOT IN DIRECT CONFLICT WITH PROPOSED NEW CONSTRUCTION SHALL BE SAVED AND PROTECTED FROM DAMAGE.
- THE CONTRACTOR SHALL GIVE ALL PROPERTY OWNERS AND/OR TENANTS OF DEVELOPED PROPERTY ADJUTING THE CONSTRUCTION OF THIS PROJECT A MINIMUM OF TEN (10) DAYS NOTICE PRIOR TO START OF CONSTRUCTION.
- THE CONTRACTOR SHALL BE RESPONSIBLE FOR PRESERVING PROPERTY IRONS. THE CONTRACTOR WILL BE REQUIRED TO RE-ESTABLISH ANY PROPERTY IRONS WHICH ARE DAMAGED OR DESTROYED BY THE CONSTRUCTION OPERATIONS. SUCH IRONS SHALL BE RE-ESTABLISHED BY A LICENSED LAND SURVEYOR IN ACCORDANCE WITH STATE LAWS.
- THE WATER DISTRIBUTION DIVISION SHALL FIELD LOCATE WATER VALVES ONE TIME DURING CONSTRUCTION WHEN REQUESTED BY THE CONTRACTOR. IT SHALL BE THE CONTRACTORS RESPONSIBILITY TO PRESERVE SUCH FIELD LOCATIONS DURING THE CONSTRUCTION PROCESS. WATER VALVES, VALVE BOXES OR FIRE HYDRANTS DAMAGED DURING CONSTRUCTION SHALL BE REPAIRED BY CONTRACTOR AT HIS OWN EXPENSE. VALVE BOXES AND WATER METERS WITHIN THE PROJECT LIMITS SHALL BE ADJUSTED TO MATCH FIELD GRADES.
- THE CONTRACTOR SHALL NOTIFY THE CONSULTANT ENGINEER AND TOM MASON WITH THE CITY OF WICHITA AT 316-268-4574 WITH THE ANTICIPATED CONSTRUCTION START DATE AND NOTIFY THEM OF THE PROJECT COMPLETION. STAKING AND INSPECTION FOR THIS PROJECT WILL BE THE RESPONSIBILITY OF THE CONTRACTOR.
- IF TRAFFIC IS IMPACTED BY CONSTRUCTION, A TRAFFIC CONTROL PLAN MUST BE SUBMITTED AND APPROVED BY THE CITY TRAFFIC ENGINEER, BRIAN COON AT TRAFFIC@WICHITA.GOV BEFORE CONSTRUCTION CAN BEGIN. THE CONTRACTOR SHALL BE RESPONSIBLE FOR ALL TRAFFIC CONTROL MEASURES TO FACILITATE CONSTRUCTION. ALL CONSTRUCTION ZONE MARKINGS AND SIGNAGE SHALL CONFORM TO THE LATEST VERSION OF THE MANUAL ON UNIFORM TRAFFIC CONTROL DEVICES (MUTCD) AS PUBLISHED BY THE US DEPT. OF TRANSPORTATION, FEDERAL HIGHWAY ADMINISTRATION. ALL COSTS ASSOCIATED WITH CONSTRUCTION MARKINGS AND SIGNAGE SHALL BE THE CONTRACTORS RESPONSIBILITY.
- ALL ELEVATIONS SHOWN ARE NGVD 29.
- ALL AREAS DISTURBED DURING CONSTRUCTION THAT WILL NOT BE UNDER PROPOSED PAVEMENT SHALL BE RESTORED TO MATCH EXISTING CONDITIONS.
- ALL EXISTING PAVEMENT AND CURB AND GUTTER WITHIN THE CONSTRUCTION LIMITS SHALL BE SAW CUT, FULL DEPTH, TO THE LINES SHOWN ON THE PLANS, OR TO THE NEAREST JOINT, AND REMOVED, UNLESS OTHERWISE NOTED. IF REMOVAL LIMITS ARE WITHIN THREE (3) FEET OF A JOINT, REMOVE TO THE JOINT.
- A PORTION OF EXCESS EXCAVATED MATERIAL SHALL BE MOUNDED AROUND MANHOLES WHICH EXTEND MORE THAN ONE (1) FOOT ABOVE THE EXISTING GROUND. SUCH MOUND SHALL BE CONSTRUCTED WITH NEW DEVELOPMENT A SIX (6) FOOT DIAMETER FLAT TOP WITH 4 TO 1 SIDE SLOPES DOWN TO THE ORIGINAL GROUND. THE ELEVATION OF THE FLAT TOP OF THE MOUND SHALL BE 0.4 FOOT BELOW THE TOP TO THE MANHOLE.
- GEOTECHNICAL REPORT AVAILABLE UPON REQUEST.
- CONTRACTOR SHALL LIMIT THE EXTENT OF TRENCH OPENINGS OVERNIGHT AND WEEKENDS TO LESS THAN 50 FEET.
- CONTRACTOR SHALL PROVIDE POSITIVE DRAINAGE AWAY FROM ALL MANHOLE COVERS.
- CITY MAINTENANCE OF STORM SEWER ENDS AT RIGHT-OF-WAY OR EASEMENT LINE.
- ANY SIDEWALK, DRIVE APPROACH, OR STREET PAVEMENT REMOVED TO CONSTRUCT PROJECT MUST HAVE A PAVEMENT CUT PERMIT AND BE REPLACED BY THE CITY CONTRACTOR. PERMITS CAN BE OBTAINED BY CALLING 316-268-4501 OR 316-268-4480.
- THE INSPECTING FIRM SHALL SUBMIT TO THE CITY STORMWATER MAINTENANCE DIVISION A DIGITAL COPY OF THE CCTV INSPECTION OF THE CONDUITS AND STRUCTURES FOLLOWING CONSTRUCTION. THE DIGITAL FILE FORMATION SHALL BE COMPATIBLE WITH THE CITY INPUT TEMPLATE. A COPY OF THE TEMPLATE IS AVAILABLE UPON REQUEST AT 316-268-4090.
- CONTRACTOR IS RESPONSIBLE FOR PROVIDING EROSION CONTROL AS NEEDED REGARDLESS OF WHAT THE CONSTRUCTION PLANS SHOW. EROSION CONTROL BMP DETAILS CAN BE FOUND AT [HTTP://WWW.WICHITA.GOV/GOVERNMENT/DEPARTMENTS/PWU/PAGES/REGULATIONS.ASPX](http://WWW.WICHITA.GOV/GOVERNMENT/DEPARTMENTS/PWU/PAGES/REGULATIONS.ASPX)

STORM SEWER IMPROVEMENTS

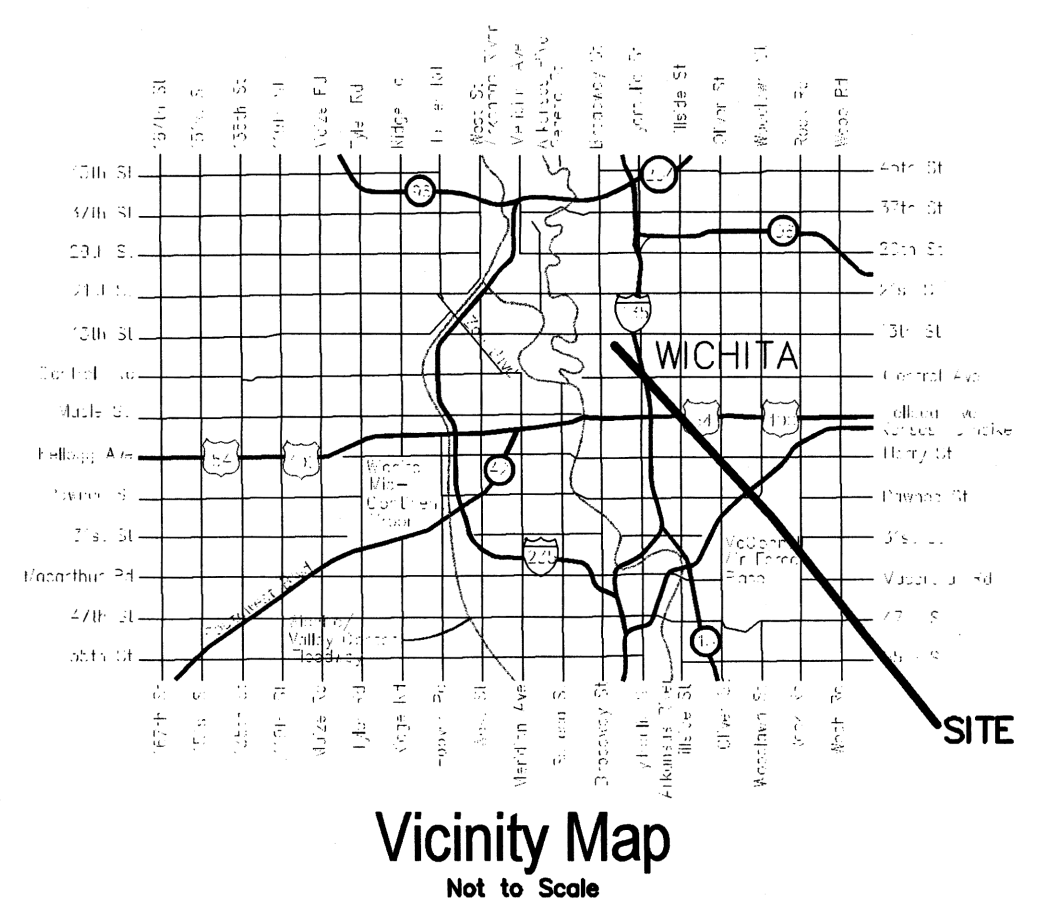
TO SERVE

THE GREATER PENTECOSTAL CHURCH OF GOD IN CHRIST

808 N. CLEVELAND

CITY OF WICHITA, KANSAS

Gary Janzen, P.E., City Engineer
0403 PPD (607861)



Sheet List Table	
Sheet Number	Sheet Title
1	COVER
2	SITE PLAN
3	GRADING PLAN
4	PLAN & PROFILE
5	AREA INLET DETAILS
6	EROSION CONTROL DETAILS 1
7	EROSION CONTROL DETAILS 2
8	EROSION CONTROL DETAILS 3
9	EROSION CONTROL DETAILS 4
10	EROSION CONTROL DETAILS 5

WATER QUALITY TREATMENT IS NOT REQUIRED UNTIL DEVELOPMENT REACHES 1 ACRE. WHEN DISTURBED AREA MEETS 1 ACRE OR MORE, THE SITE WILL UTILIZE THE OFFSITE BMP PROGRAM FOR WATER QUALITY TREATMENT.

Erosion Control details are not included in this plan set but can be found on the City of Wichita's website.

AS BUILTS

Contractor: Newfarmer Excavation
Inspector: Tom Jones
Date: 12/22/2016

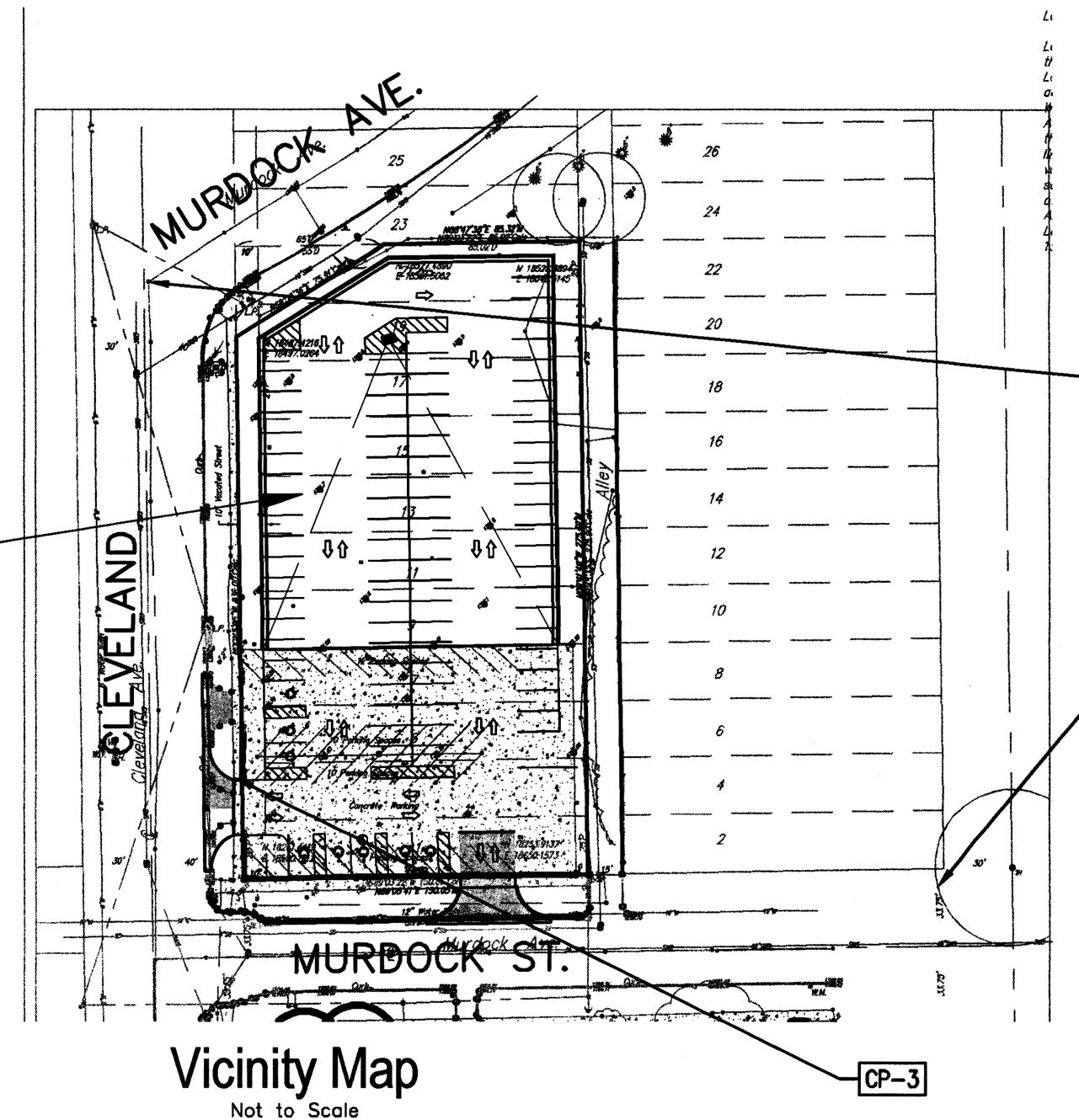
KEMILLER

ENGINEERING PA
117 E. Lewis,
Wichita, KS 67202 (316)264-0242

Stormwater Certification:
Redevelopment

These construction plans were prepared in accordance with the current Stormwater Management Regulations as set forth in the City of Wichita's Stormwater Management Ordinance 16.32 and the policies/guidelines presented in the Wichita/Sedgwick County Stormwater Manual.

*Disturbed Area = .574 acres
Water Quality Treatment: N/A
Downstream Channel Protection: N/A
Detention: N/A*



PROJECT LOCATION

Benchmark #1: Square Cut on Top of Curb
S. Side of Murdock @ N.E. Corner of Sidewalk ramp
S.E. Corner of Murdock & Cleveland
WICHITA, SEDGWICK COUNTY, KANSAS
Elevation = 1299.87 NGVD

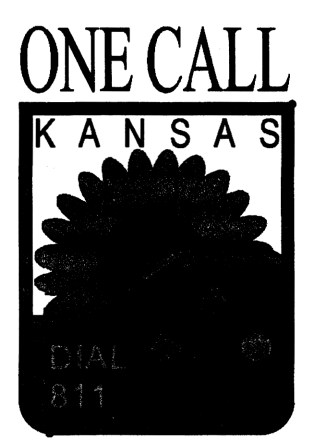
Benchmark #2: At intersecting center lines at Murdock Ave. & Cleveland St., due East 91.3', due North 18.5',
Elevation = 1299.94 NGVD

CONTROL POINTS

- CP-1**
NE CORNER, NE 1/4 SEC. 16 T27S, R1E SURVEY THIMBLE
N: 18725.0908'
E: 18423.9034'
- CP-2**
NE CORNER, NE 1/4 SEC. 16 T27S, R1E SURVEY THIMBLE
N: 18256.9619'
E: 18835.1854'
- CP-3**
NE CORNER, NE 1/4 SEC. 16 T27S, R1E SURVEY THIMBLE
N: 18183.7859'
E: 18149.2074'

LEGAL DESCRIPTION:

*Lots 1, 3, 5, 7, 9, 11, 13, 15, 17, 19 and 21 on Cleveland, together with the east 10 feet of vacated Cleveland, lying west of and adjacent to said Lots, except that part of Lots 19 and 21 and vacated street right-of-way adjacent on the west, dedicated for Street, described as: Allen's Addition, Wichita, Kansas, Beginning at a point on the north line of Lot 21, Allen's Addition to Wichita, Kansas, said point being fifty-five (55) feet east of the N.W. Corner of said Lot 12; thence west along said north line and said line extended for a distance sixty-five (65) feet to the west line of vacated street right-of-way; thence south parallel to the west line of said Lot 21 and the west line of Lot 19 of said Addition for a distance of thirty-nine (39) feet; thence northeasterly to the point of beginning. AND
Lots 1, 3, 5, 7, 9, 11, 13, 15, 17 and 19 on Oak now Murdock and Lots 15, 17, 19 and 21 on Cleveland, Allen's 2nd Additon, Wichita, Kansas.*



APPROVED AS NOTED
BY WICHITA PUBLIC WORKS ENGINEERING
AND STORMWATER DIVISION

Engineering: *Rebecca Ziel* 9/27/2016
Stormwater: *Joe Helton PE* 6/28/16

NOTE TO CONTRACTORS
INSPECTION AND TESTING FOR THIS PROJECT IS TO BE PROVIDED BY A LICENSED CONSULTING ENGINEERING FIRM UNDER CONTRACT WITH THE OWNER/DEVELOPER. SAID INSPECTION TO BE IN ACCORDANCE WITH THE CITY OF WICHITA STANDARD CONSTRUCTION ENGINEERING PRACTICES AND CERTIFIED BY A LICENSED PROFESSIONAL ENGINEER IN THE STATE OF KANSAS. NO WORK SHALL BE PERFORMED THE CONTRACTOR WITHOUT SUCH INSPECTION NOR SHALL ANY WORK BE COMMENCED WITHOUT WRITTEN AUTHORIZATION BY CITY ENGINEERING. ALL CONSTRUCTION AND MATERIALS SHALL COMPLY WITH THE CURRENT CITY OF WICHITA SPECIFICATIONS AND STANDARDS AND SPECIAL PROVISIONS. (ON FILE AND AVAILABLE AT WICHITA.GOV).
AN APPROVED COPY OF THESE PLANS SIGNED BY CITY STAFF ARE REQUIRED ON-SITE.

REV.	DESCRIPTION	DATE

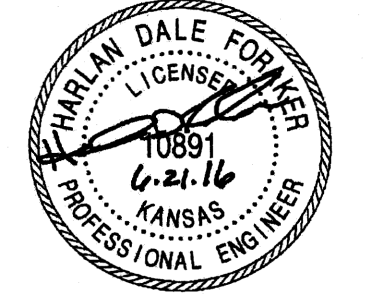
**PARKING LOT EXPANSION
GREATER PENTECOSTAL
CHURCH OF GOD
IN CHRIST**

808 N. CLEVELAND ST.
WICHITA, SEDGWICK COUNTY, KANSAS

CERTIFIED ENGINEERING DESIGN, P.A.
CIVIL ENGINEERING

CED

1935 WEST MAPLE
WICHITA, KANSAS 67213
PH.(316)262-8808 FAX.(316)262-1669



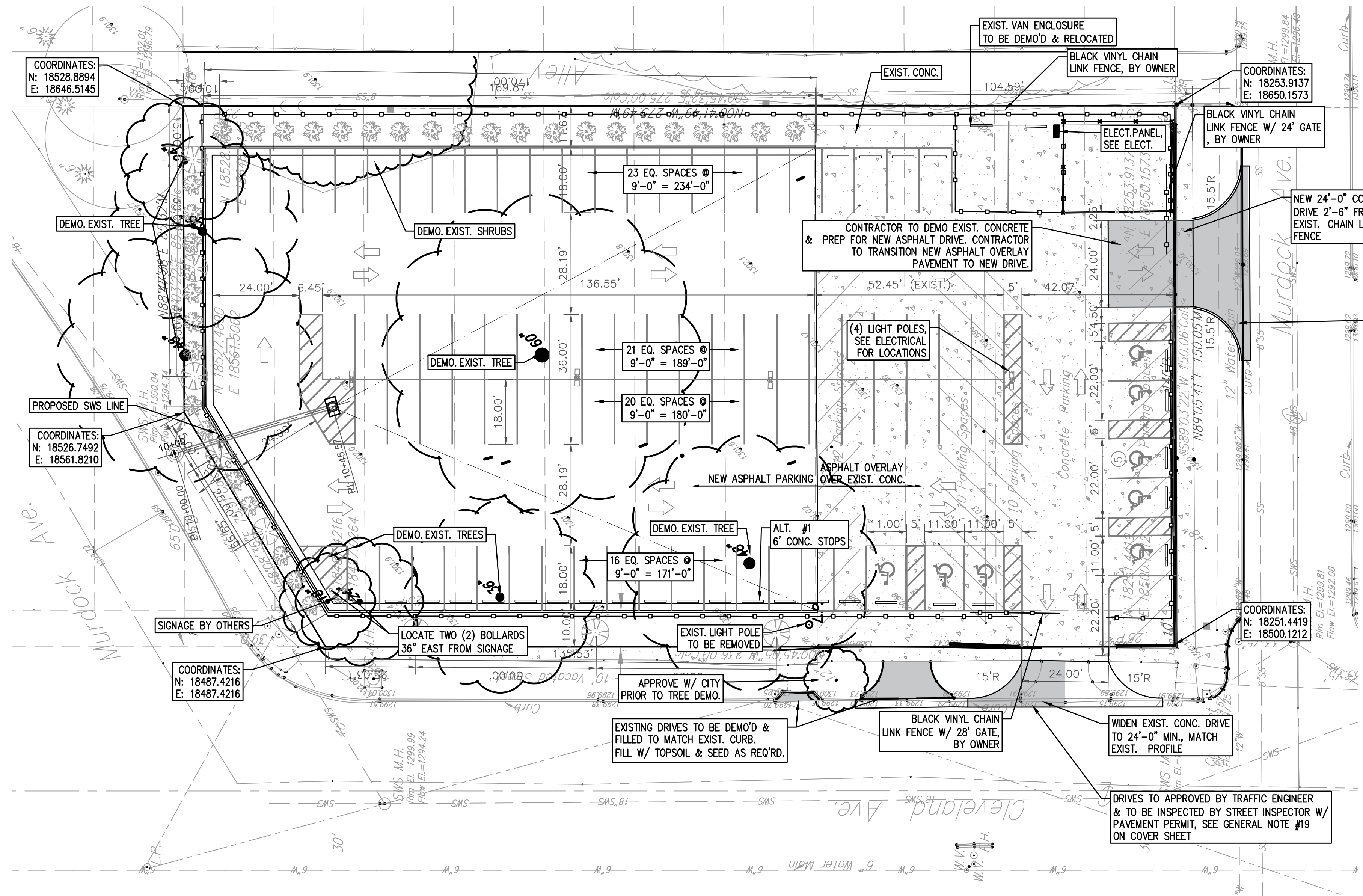
PRELIMINARY PLANS

PROJECT NO.: 20162323
ISSUE DATE: JUNE 21, 2016
CONTACT: H FORAKER
DRAWN BY: RW CHECKED BY: LM

COVER SHEET

FILE LOCATION: S:\Drawing Files\Land Projects\CC 11-17-08\Greater Pentecostal Church of God\DWG\Grading Plan.dwg TAB NAME: COVER USER: warren SAVED: 6/21/2016 9:46 AM PLOTTED: 6/21/2016 9:48 AM

FILE LOCATION: S:\Drawing Files\Land Projects CC 11-17-08\Greater Pentecostal Church of God\DWG\Grading Plan.dwg TAB NAME: SITE PLAN USER: rwarren SAVED: 7/11/2016 9:51 AM PLOTTED: 7/11/2016 10:01 AM



PARKING STALLS

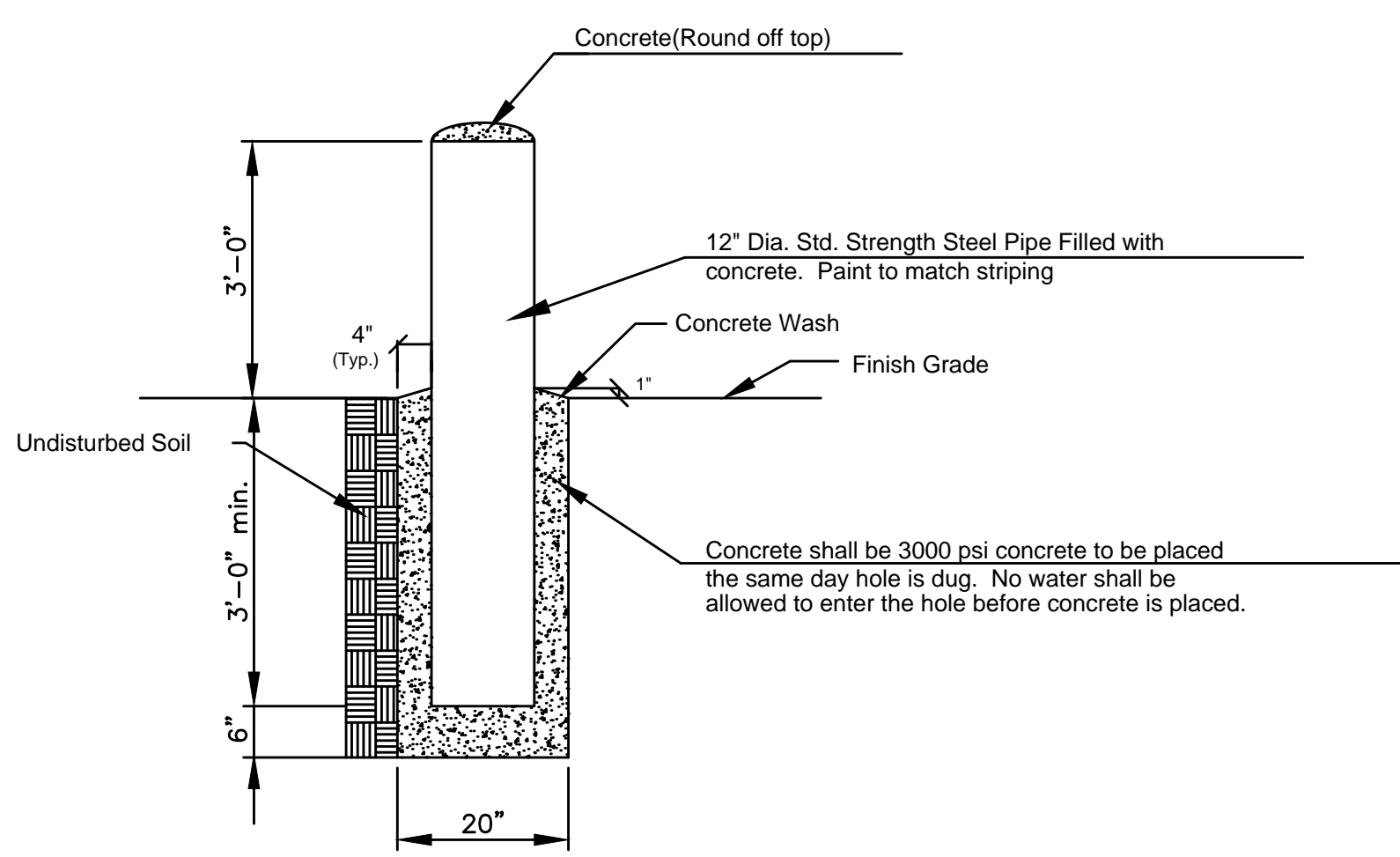
STANDARD STALLS (9' X 18')	85
HANDICAPPED STALLS	6
TOTAL PARKING STALLS	93

- GENERAL NOTES:**
- CONTRACTOR TO VERIFY EXISTING SITE CONDITIONS. ALL EXISTING CONCRETE, FOOTINGS & OTHER MISC. ITEMS MUST BE REMOVED FROM SITE PRIOR TO CONSTRUCTION OF NEW PARKING LOT.
 - ALL EXISTING BROKEN CURBS WITHIN EXIST. PARKING LOT TO BE REPAIRED TO MATCH EXISTING.
 - ALL SHRUBS, TREES, VEGETATION WITHIN PROPERTY LINE TO BE REMOVED TO PREP FOR NEW PARKING LOT. NOT ALL VEGETATION TO BE REMOVED MAY BE INDICATED ON DRAWING. EXIST. CONCRETE PARKING LOT TO BE OVERLAYED WITH ASPHALT COVERING TO MATCH NEW ASPHALT.
 - ELECTRICAL CONTRACTOR TO COORDINATE SIGNAGE POWER INSTALLATION PRIOR TO CONSTRUCTION OF NEW ASPHALT PAVING.

DRIVES TO APPROVED BY TRAFFIC ENGINEER & TO BE INSPECTED BY STREET INSPECTOR W/ PAVEMENT PERMIT, SEE GENERAL NOTE #19 ON COVER SHEET

DRIVES TO APPROVED BY TRAFFIC ENGINEER & TO BE INSPECTED BY STREET INSPECTOR W/ PAVEMENT PERMIT, SEE GENERAL NOTE #19 ON COVER SHEET

- GRADING LEGEND**
- x- = EXISTING Fence
 - [Hatched] = Demo Existing Concrete
 - [Arrow] = EXISTING drainage flow direction
 - [Arrow] = PROPOSED DRAINAGE FLOW DIRECTION
 - - - = PROPOSED Flow Line
 - [Circle] = PROPOSED Vegetation
 - [Dashed] = PROPOSED Contours
 - TC = Top of Curb Elevation
 - G = Gutter Elevation
 - TA = PROPOSED Top of Asphalt Elevation
 - FG = Finish Grade
 - EX = Existing
 - SW = Side Walk
 - - - = Demolition



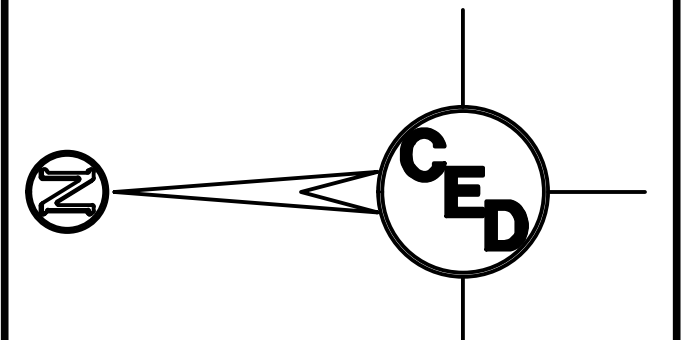
PIPE BOLLARD DETAIL

WATER QUALITY TREATMENT IS NOT REQUIRED UNTIL DEVELOPMENT REACHES 1 ACRE. WHEN DISTURBED AREA MEETS 1 ACRE OR MORE, THE SITE WILL UTILIZE THE OFFSITE BMP PROGRAM FOR WATER QUALITY TREATMENT.

UTILITIES SHOWN REPRESENT THE BEST INFORMATION AVAILABLE FOR DESIGN. ADDITIONAL UTILITIES MAY BE PRESENT ON THIS PROJECT. THE CONTRACTOR SHALL BE RESPONSIBLE FOR DETERMINING THE EXACT LOCATION, DEPTH AND SIZE OF ALL UNDERGROUND UTILITIES PRIOR TO CONSTRUCTION. THE CONTRACTOR SHALL BE LIABLE FOR ANY DAMAGE CAUSED BY THE FAILURE TO DO SO.



REV.	DESCRIPTION	DATE



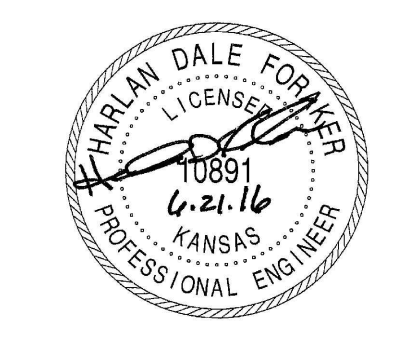
**PARKING LOT EXPANSION
GREATER PENTECOSTAL
CHURCH OF GOD
IN CHRIST**

808 N. CLEVELAND ST.
WICHITA, SEDGWICK COUNTY, KANSAS

CERTIFIED ENGINEERING DESIGN, P.A.
CIVIL ENGINEERING

CEd

1935 WEST MAPLE
WICHITA, KANSAS 67213
PH.(316)262-8808 FAX.(316)262-1669

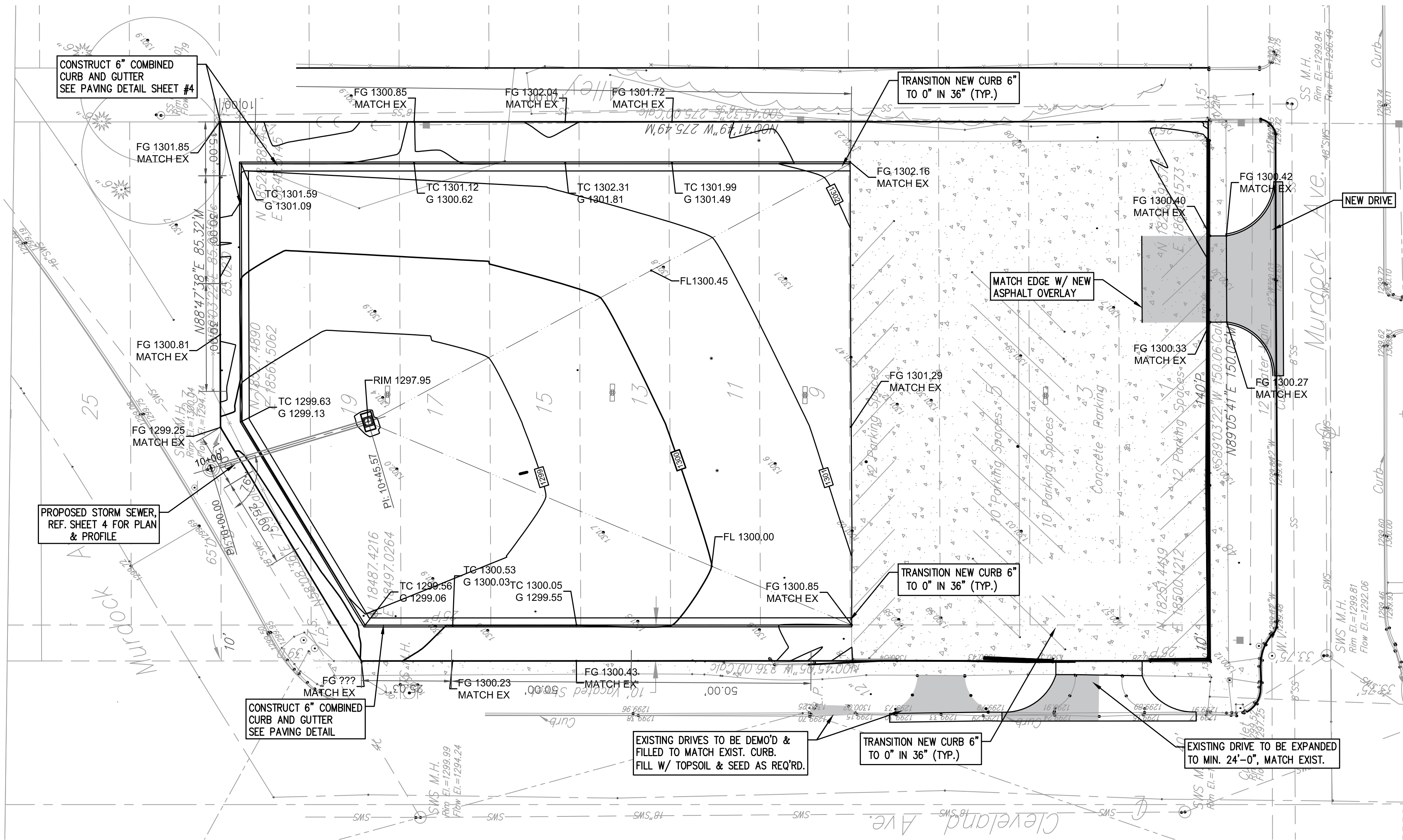


PRELIMINARY PLANS

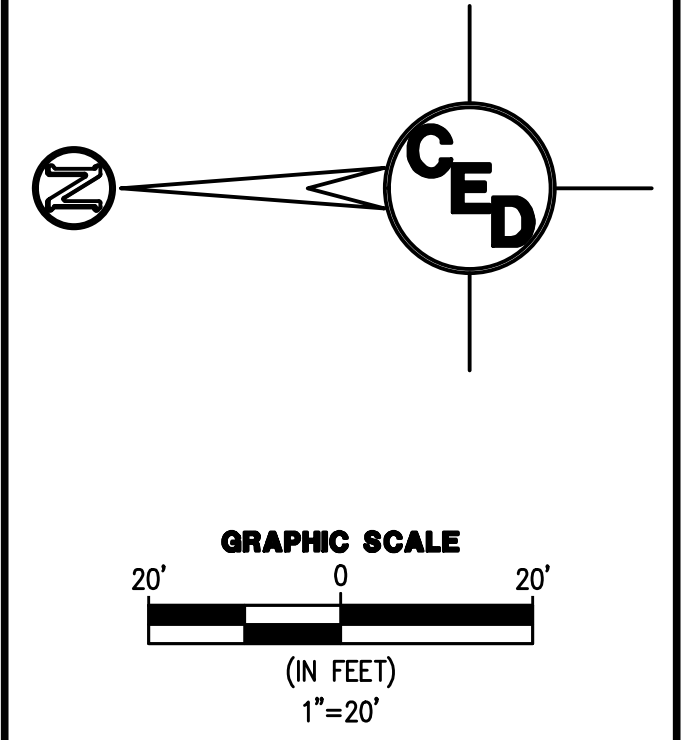
PROJECT NO.: 20162323
ISSUE DATE: JUNE 21, 2016
CONTACT: H FORAKER
DRAWN BY: RW CHECKED BY: LM

SITE LAYOUT

FILE LOCATION: S:\Drawing Files\Land Projects CC 11-17-08\Greater Pentecostal Church of God\DWG\Grading Plan.dwg TAB NAME: GRADING PLAN USER: rwarren SAVED: 7/11/2016 10:01 AM



- GENERAL NOTES:**
1. CONTRACTOR TO VERIFY EXISTING SITE CONDITIONS. ALL EXISTING CONCRETE, FOOTINGS & OTHER MISC. ITEMS MUST BE REMOVED FROM SITE PRIOR TO CONSTRUCTION OF NEW PARKING LOT.
 2. ALL EXISTING BROKEN CURBS WITHIN EXIST. PARKING LOT TO BE REPAIRED TO MATCH EXISTING.
 3. ALL SHRUBS, TREES, VEGETATION WITHIN PROPERTY LINE TO BE REMOVED TO PREP FOR NEW PARKING LOT. NOT ALL VEGETATION TO BE REMOVED MAY BE INDICATED ON DRAWING.
 4. EXIST. CONCRETE PARKING LOT TO BE OVERLAYED WITH ASPHALT COVERING TO MATCH NEW ASPHALT.
 5. ELECTRICAL CONTRACTOR TO COORDINATE SIGNAGE POWER INSTALLATION PRIOR TO CONSTRUCTION OF NEW ASPHALT PAVING.



- GRADING LEGEND**
- x- = EXISTING Fence
 - [Hatched Box] = Demo Existing Concrete
 - [Arrow] = EXISTING drainage flow direction
 - [Arrow] = PROPOSED DRAINAGE FLOW DIRECTION
 - - - = PROPOSED Flow Line
 - [Dotted Circle] = PROPOSED Vegetation
 - [Dashed Line] = PROPOSED Contours
 - TC = Top of Curb Elevation
 - G = Gutter Elevation
 - TA = PROPOSED Top of Asphalt Elevation
 - FG = Finish Grade
 - EX = Existing
 - SW = Side Walk
 - - - - = Demolition

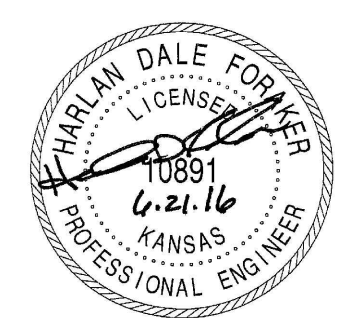
**PARKING LOT EXPANSION
GREATER PENTECOSTAL
CHURCH OF GOD
IN CHRIST**

808 N. CLEVELAND ST.
WICHITA, SEDGWICK COUNTY, KANSAS

CERTIFIED ENGINEERING DESIGN, P.A.
CIVIL ENGINEERING



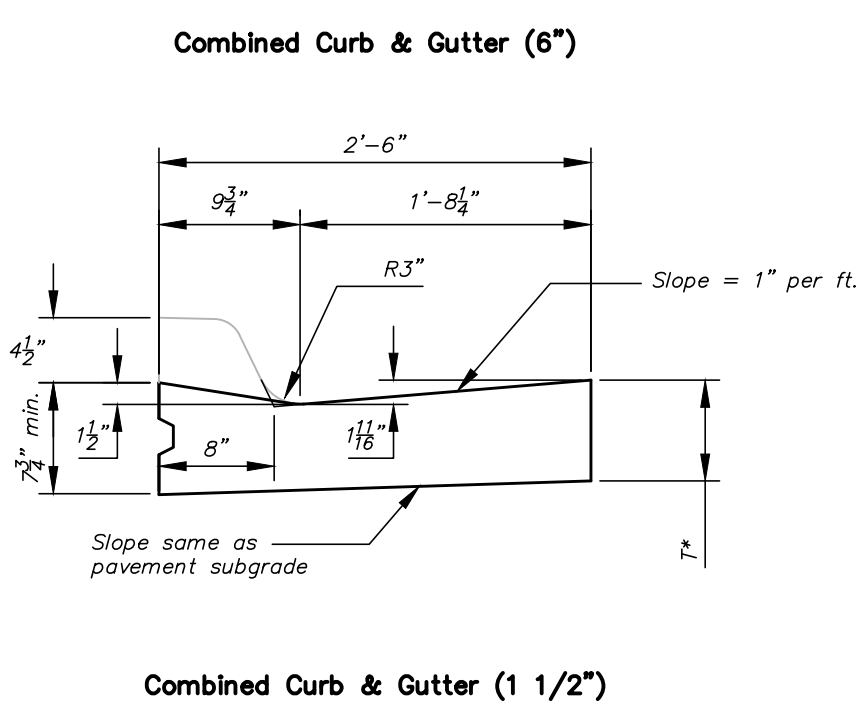
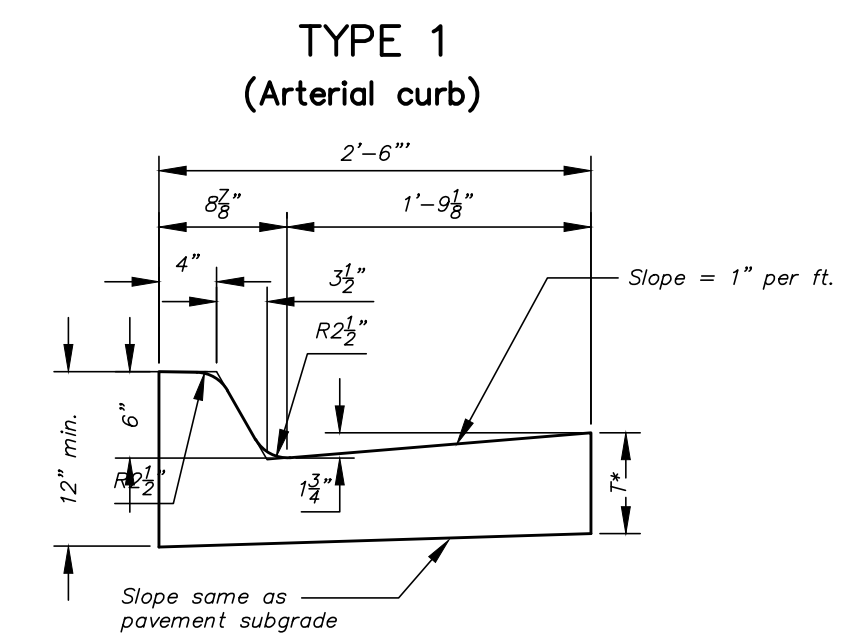
1935 WEST MAPLE
WICHITA, KANSAS 67213
PH.(316)262-8808 FAX.(316)262-1669



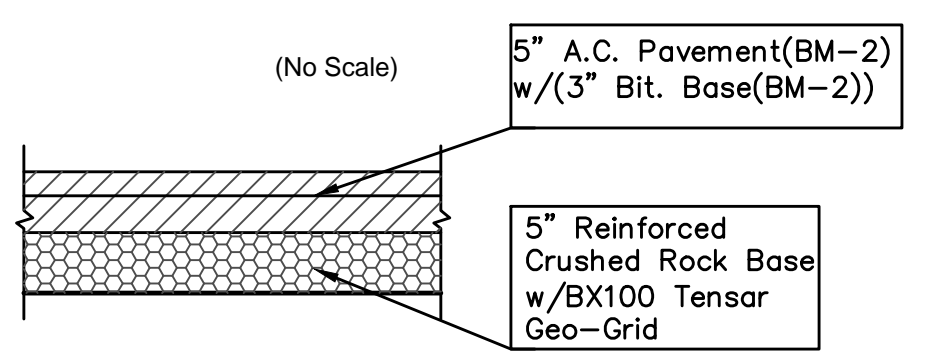
PRELIMINARY PLANS

PROJECT NO.: 20162323
ISSUE DATE: JUNE 21, 2016
CONTACT: H FORAKER
DRAWN BY: RW CHECKED BY: LM

GRADING PLAN



Typical Asphalt Pavement Section



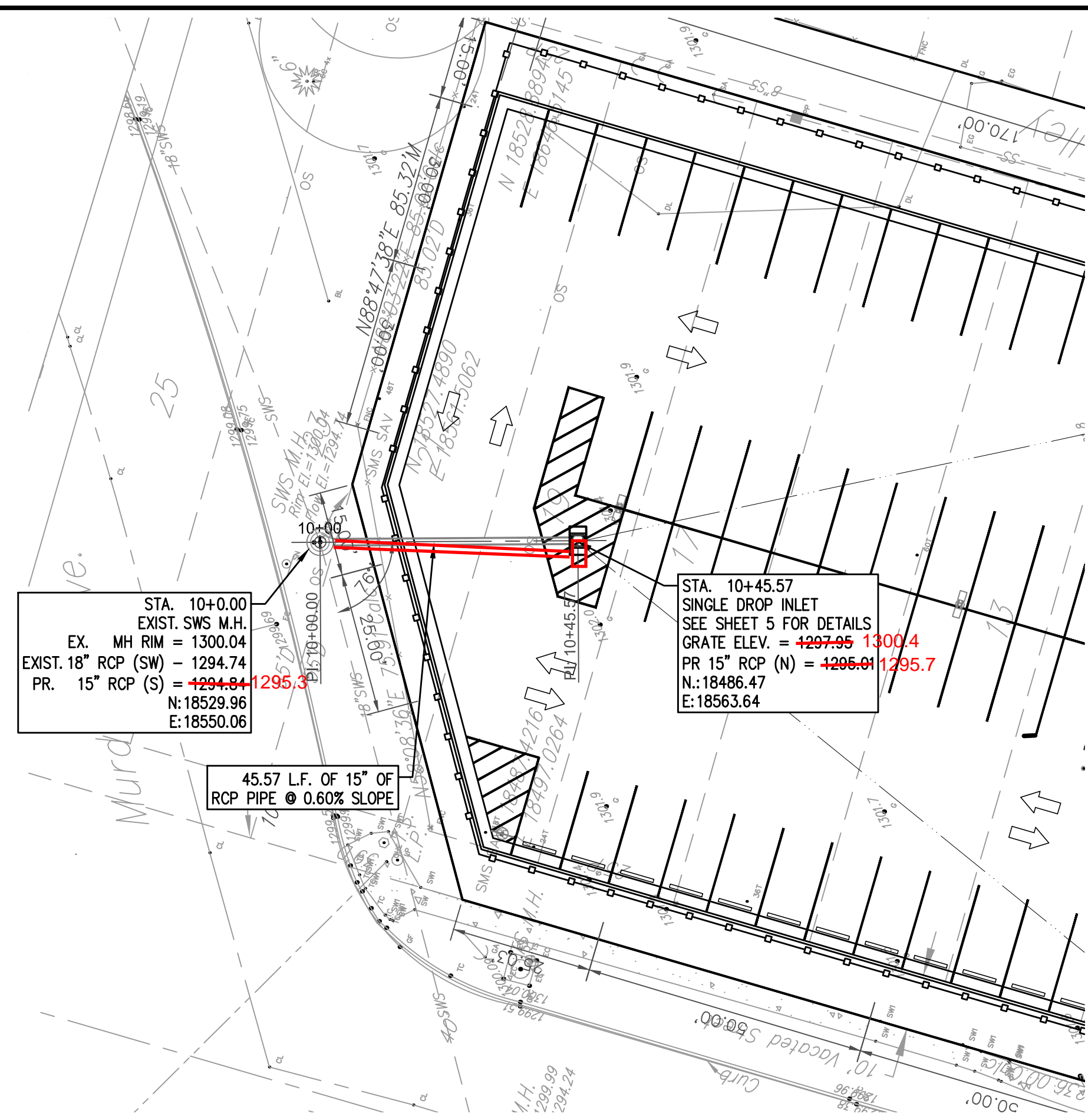
Asphalt General Notes
FABRIC BASE REINFORCEMENT SHALL BE B X 1100 GEOGRID AS MANUFACTURED BY TENSAR CORPORATION OR APPROVED EQUAL. FABRIC BASE REINFORCEMENT SHALL BE INSTALLED IN ACCORDANCE WITH MANUFACTURER'S RECOMMENDATIONS. CRUSHED ROCK SHALL BE UNIFORMLY GRADED FROM 1-1/2\"/>

Benchmark: Square Cut on Top of Curb
S. Side of Murdock @ N.E. Corner of Sidewalk ramp
S.E. Corner of Murdock & Cleveland
WICHITA, SEDGWICK COUNTY, KANSAS
Elevation = 1299.87 NGVD

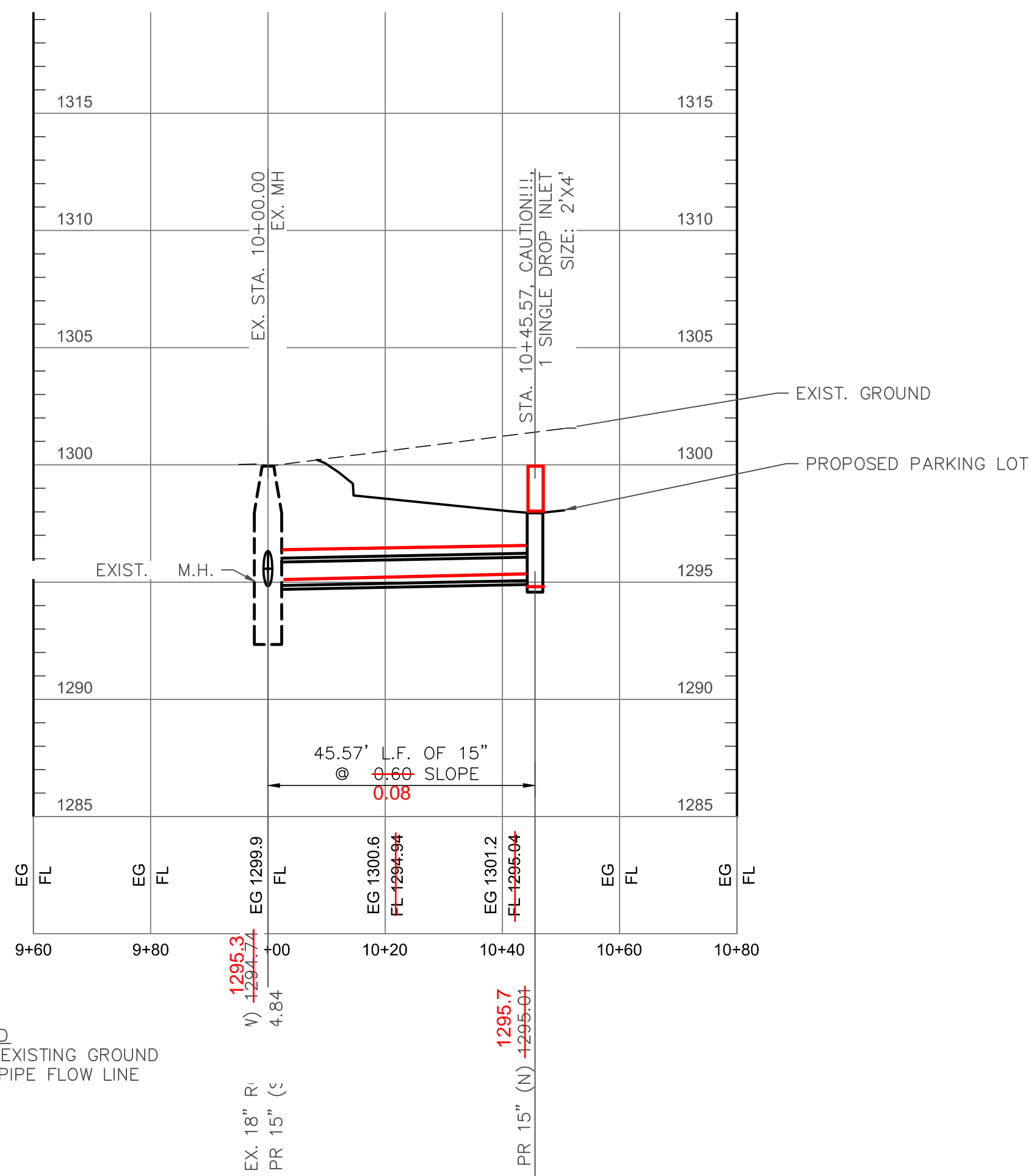
UTILITIES SHOWN REPRESENT THE BEST INFORMATION AVAILABLE FOR DESIGN. ADDITIONAL UTILITIES MAY BE PRESENT ON THIS PROJECT. THE CONTRACTOR SHALL BE RESPONSIBLE FOR DETERMINING THE EXACT LOCATION, DEPTH AND SIZE OF ALL UNDERGROUND UTILITIES PRIOR TO CONSTRUCTION. THE CONTRACTOR SHALL BE LIABLE FOR ANY DAMAGE CAUSED BY THE FAILURE TO DO SO.



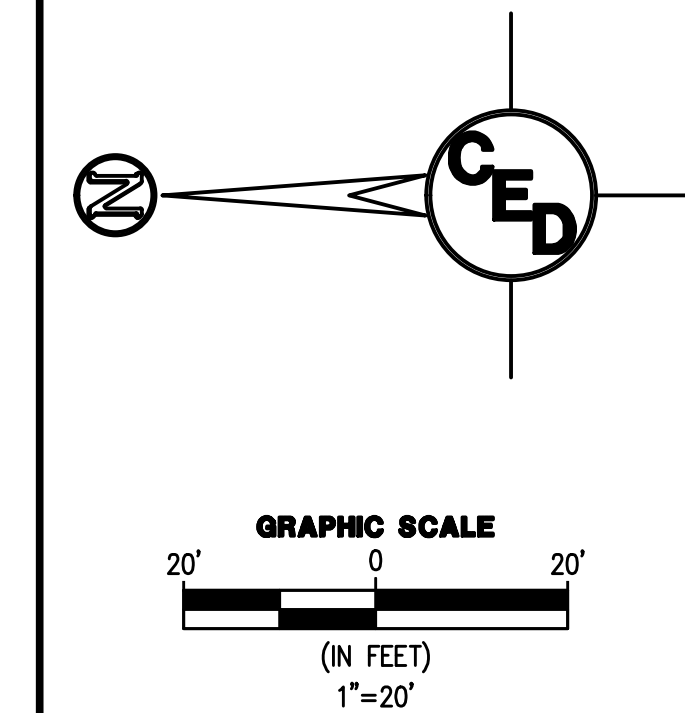
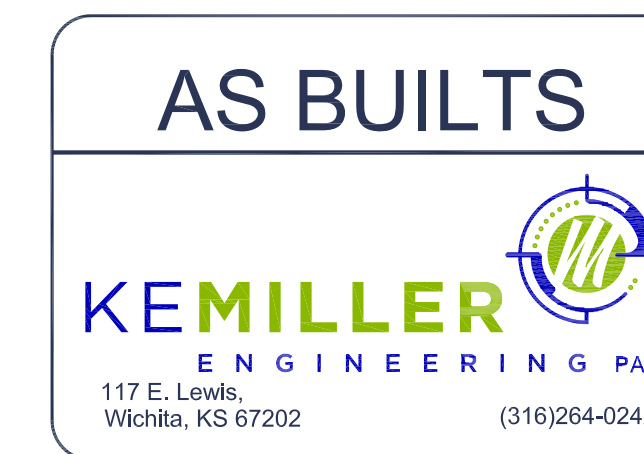
FILE LOCATION: S:\Drawing Files\Land Projects CC 11-17-08\Greater Pentecostal Church of God\DWG\Grading Plan.dwg TAB NAME: PLAN & PROFILE USER: rwarren SWED: 7/17/2016 9:51 AM PLOTTED: 7/17/2016 10:01 AM



STORM SEWER LINE 1



LEGEND
EG = EXISTING GROUND
FL = PIPE FLOW LINE



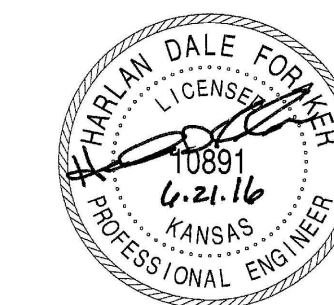
PARKING LOT EXPANSION
GREATER PENTECOSTAL
CHURCH OF GOD
IN CHRIST

808 N. CLEVELAND ST.
WICHITA, SEDGWICK COUNTY, KANSAS

CERTIFIED ENGINEERING DESIGN, P.A.
CIVIL ENGINEERING



1935 WEST MAPLE
WICHITA, KANSAS 67213
PH.(316)262-8808 FAX.(316)262-1669



PRELIMINARY PLANS

PROJECT NO.: 20162323
ISSUE DATE: JUNE 21, 2016
CONTACT: H FORAKER
DRAWN BY: RW CHECKED BY: LM

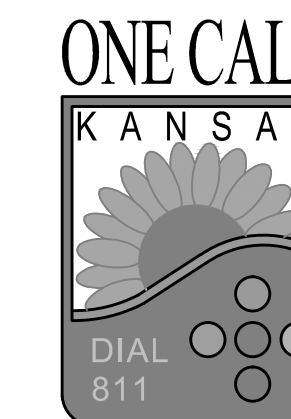
PLAN & PROFILE

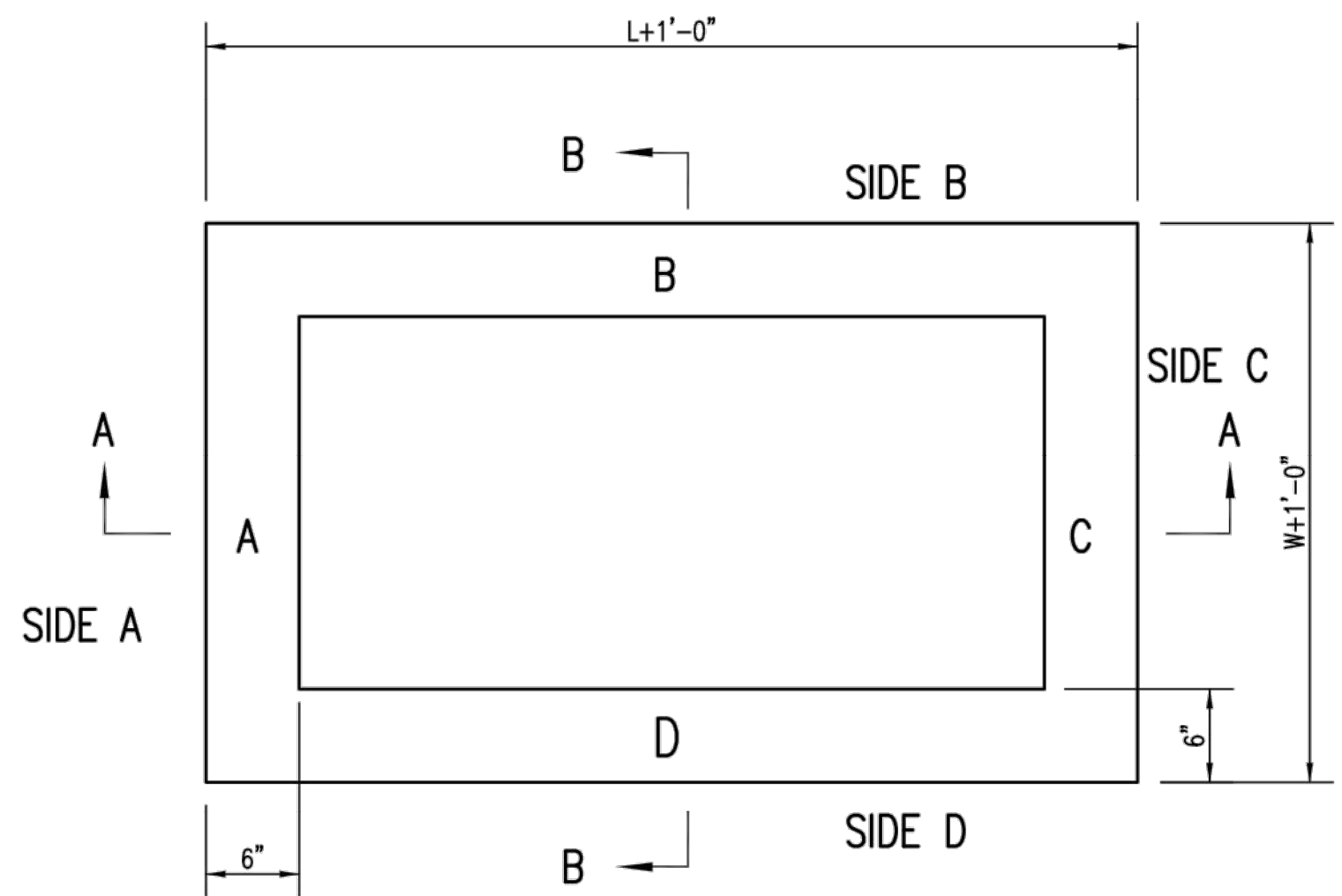
WATER QUALITY TREATMENT IS NOT REQUIRED UNTIL DEVELOPMENT REACHES 1 ACRE. WHEN DISTURBED AREA MEETS 1 ACRE OR MORE, THE SITE WILL UTILIZE THE OFFSITE BMP PROGRAM FOR WATER QUALITY TREATMENT.

Benchmark: Square Cut on Top of Curb
S. Side of Murdock @ N.E. Corner of Sidewalk ramp
S.E. Corner of Murdock & Cleveland
WICHITA, SEDGWICK COUNTY, KANSAS
Elevation = 1299.87 NGVD

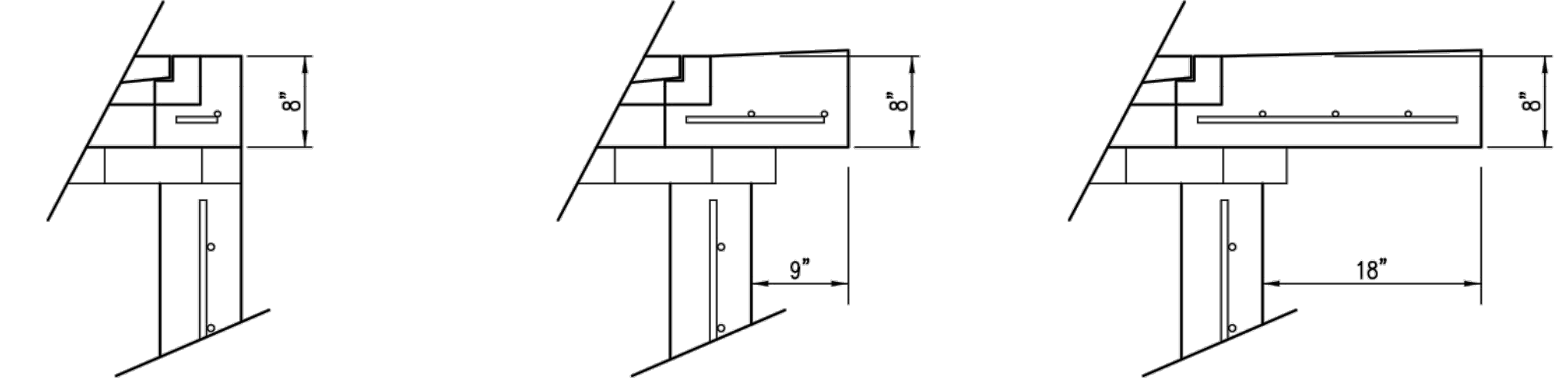
SURVEY DISCLAIMER:
TOPOGRAPHIC SURVEY AND CONTOUR MAP USED IN PREPARING PLANS WAS PROVIDED BY SAVOY COMPANY, P.A., 433 S. HYDRAULIC, WICHITA, KS. ENGINEER DOES NOT GUARANTEE SURVEY ELEVATIONS FOR ACCURACY. CONTRACTOR SHALL VERIFY ELEVATIONS AND NOTIFY ENGINEER OF ANY DISCREPANCIES.

UTILITIES SHOWN REPRESENT THE BEST INFORMATION AVAILABLE FOR DESIGN. ADDITIONAL UTILITIES MAY BE PRESENT ON THIS PROJECT. THE CONTRACTOR SHALL BE RESPONSIBLE FOR DETERMINING THE EXACT LOCATION, DEPTH AND SIZE OF ALL UNDERGROUND UTILITIES PRIOR TO CONSTRUCTION. THE CONTRACTOR SHALL BE LIABLE FOR ANY DAMAGE CAUSED BY THE FAILURE TO DO SO.





TOP VIEW



FLUSH STYLE TOP
NO APRON

9" APRON
* APRON TO EXTEND ON ALL 4 SIDES OF INLET.
DESIGNER TO DESIGNATE APRON SIZE.

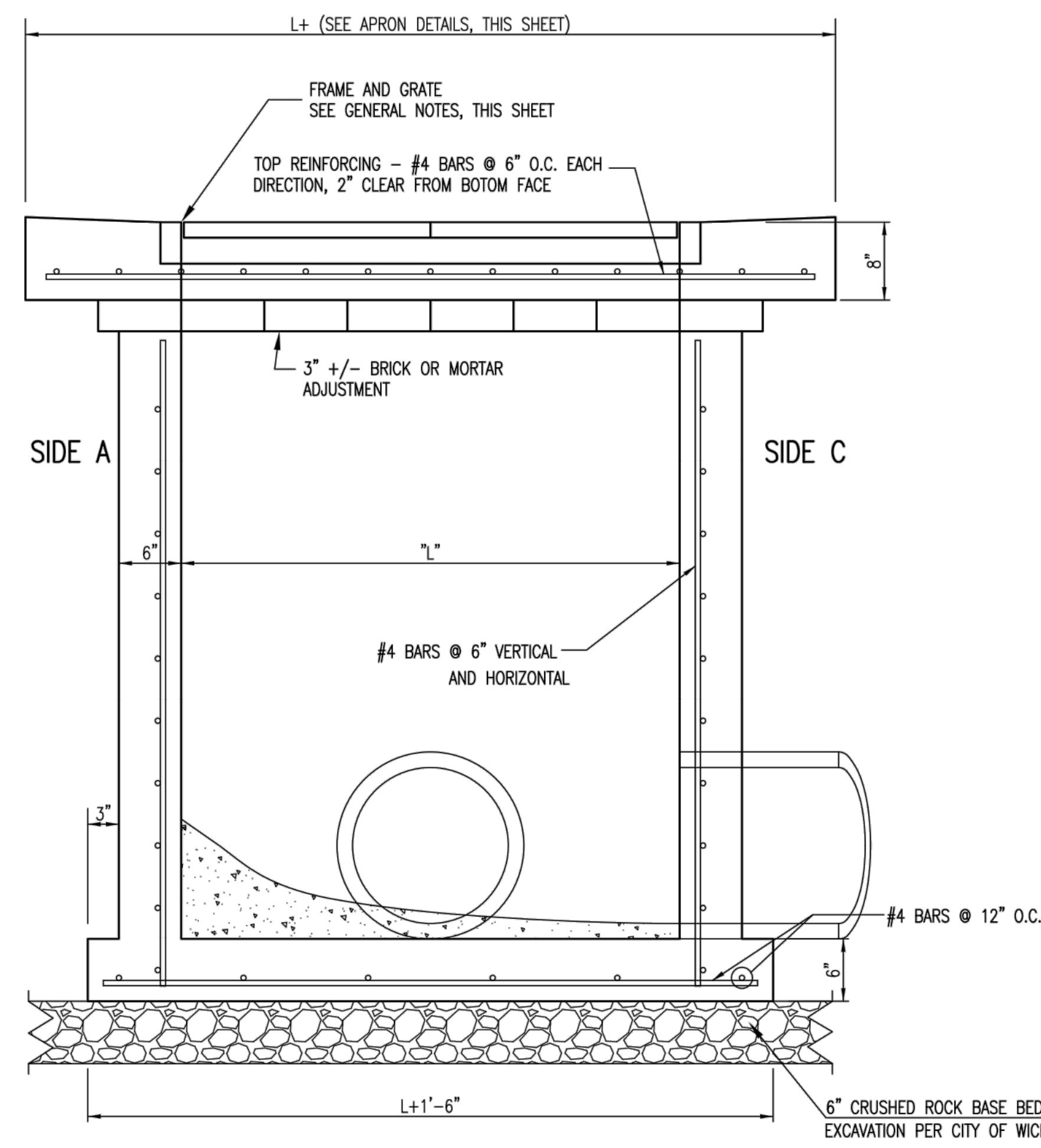
18" APRON

W=2' and L=2' for SINGLE DROP INLET
W=2' and L=4' for DOUBLE DROP INLET

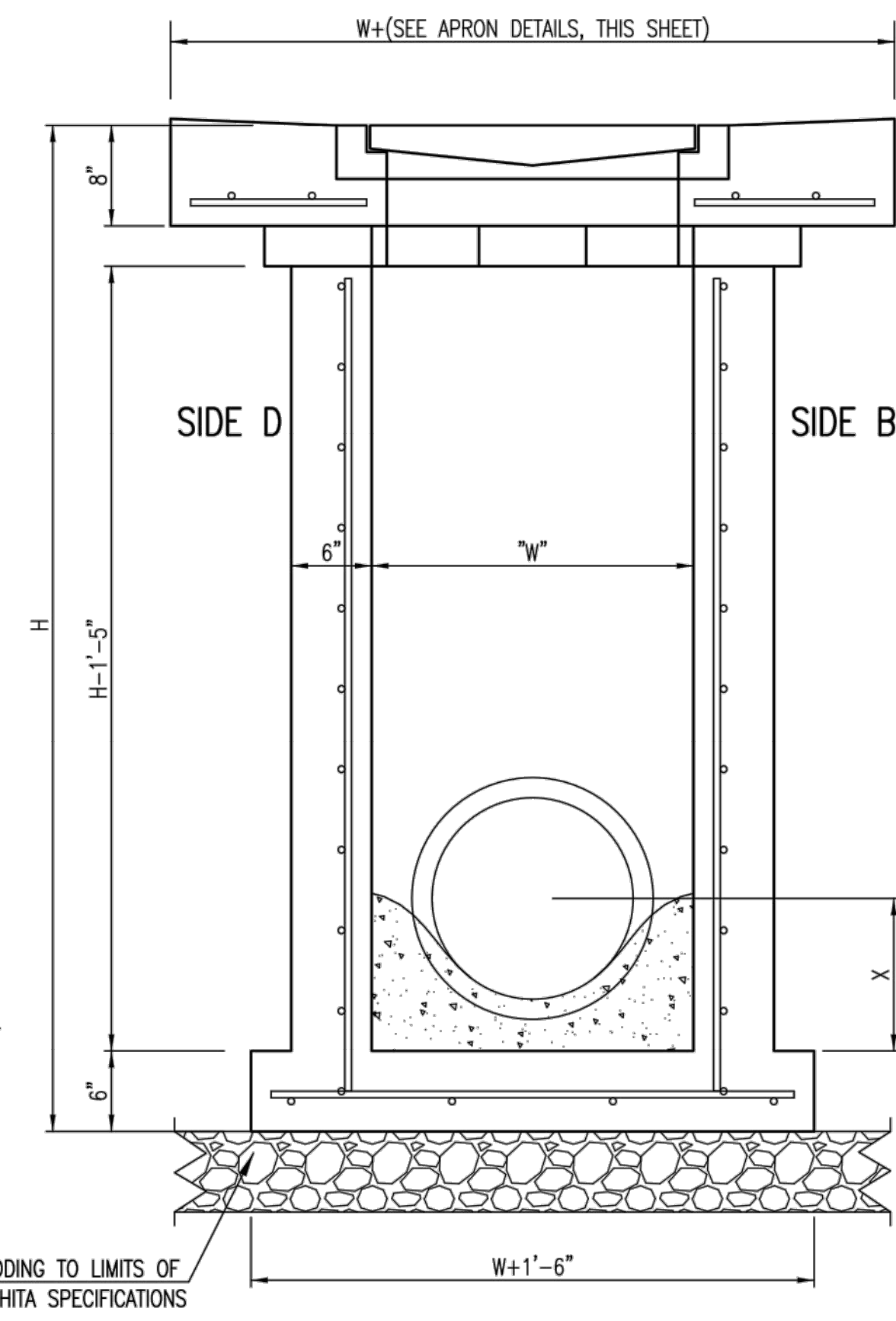
The structure(s) on this detail sheet are designed for HS-20 loading at these specific dimensions only. If larger dimensions are required, the ENGINEER shall provide a project specific structure design for approval by the City Engineer's office.

GENERAL NOTES

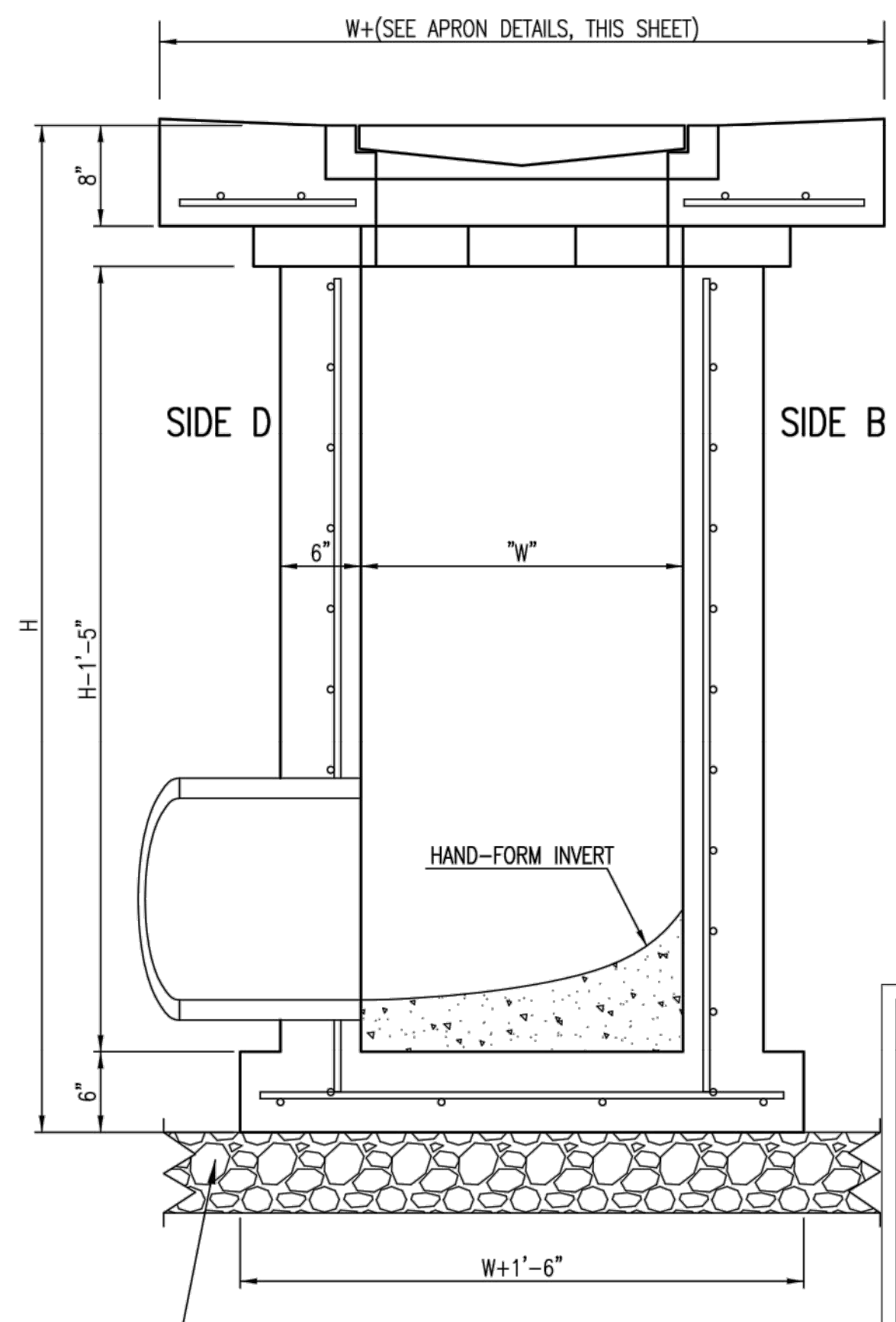
1. GRATE FRAME TO BE INSTALLED ON THIN MORTAR CUSHION TO INSURE FULL SUPPORT ALONG BRICK. CONCRETE USED FOR INLET CONSTRUCTION SHALL CONFORM TO CITY OF WICHITA SPECIFICATIONS FOR CONCRETE PAVEMENT MIX.
2. INLET INVERT SHALL BE SHAPED WITH 8 SACK SAND MIX CONCRETE TO CREATE FLOW CHANNELS AND TO INCREASE HYDRAULIC EFFICIENCY SUCH THAT THE INLET WILL BE SELF CLEANING BETWEEN ALL INLET AND/OR OUTLET PIPES.
3. THE ENDS OF ALL PIPES INSTALLED IN INLETS SHALL BE CUT OFF FLUSH WITH THE INSIDE FACE OF THE INLET WALL.
4. INLET FRAME AND GRATE TO BE DEETER #2433, EJIW #5391-Z1 OR APPROVED EQUAL FOR 2'x2' SINGLE DROP INLET AND DEETER #2434, EJIW #5391 Z3 OR APPROVED EQUAL FOR 2'x4' DOUBLE DROP INLET.
5. CONTRACTOR SHALL REMOVE LIFTING HOOKS AFTER INSTALLATION. RECESSES IN INLET WALL SHALL BE GROUTED FLUSH TO THE INLET WALL WITH HYDRAULIC CEMENT AFTER THE INLET IS IN PLACE. LIFTING HOLES THRU THE INLET WALL WILL NOT BE ACCEPTED.




SECTION "A-A"



SECTION "B-B"
END OUTLET



SECTION "B-B"
SIDE OUTLET

 CITY OF WICHITA PUBLIC WORKS & UTILITIES ENGINEERING DIVISION			REVISD: MARCH 2015		
			SINGLE/DOUBLE DROP INLET		
CITY ENGINEER GARY JANZEN, P.E.			PROJECT NUMBER	OCA NUMBER	DATE
CITY ENGINEER'S OFFICE CITY HALL - SEVENTH FLOOR 455 NORTH MAIN STREET WICHITA, KANSAS 67202-1620 (316) 268-4501			SHEET		