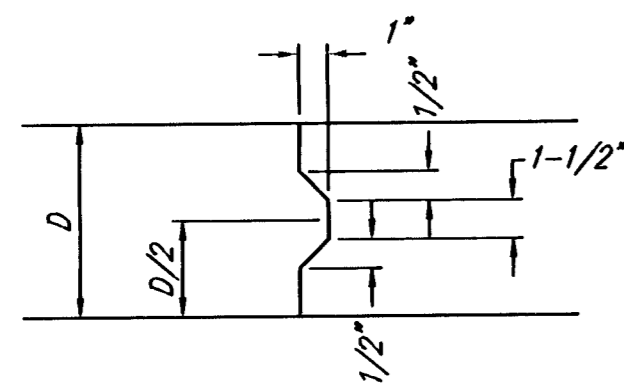
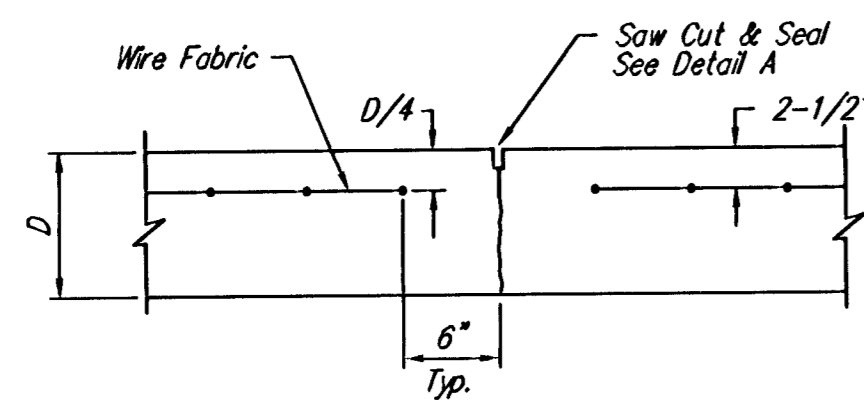


**EXPANSION JOINT**

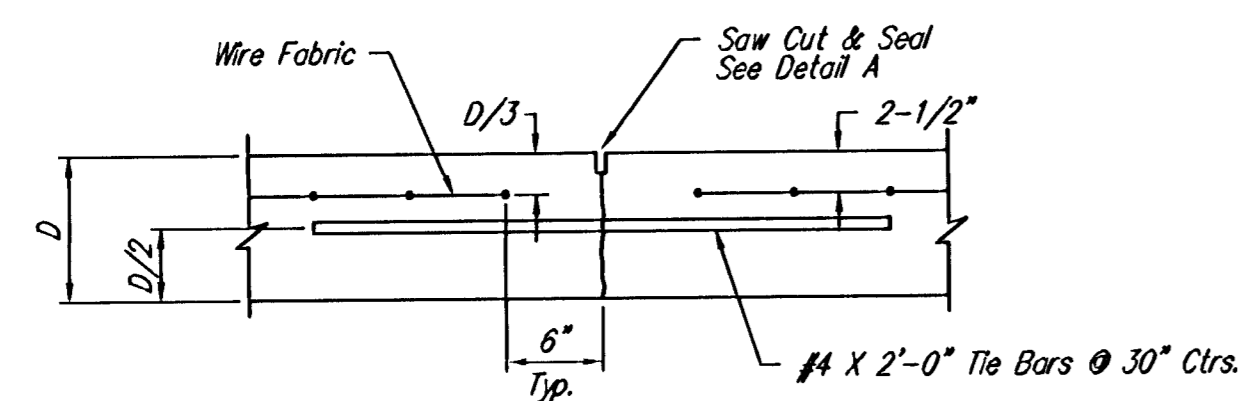
NOTE: Extra Thickness to be Subsidiary to Price of Square Yards Pavement



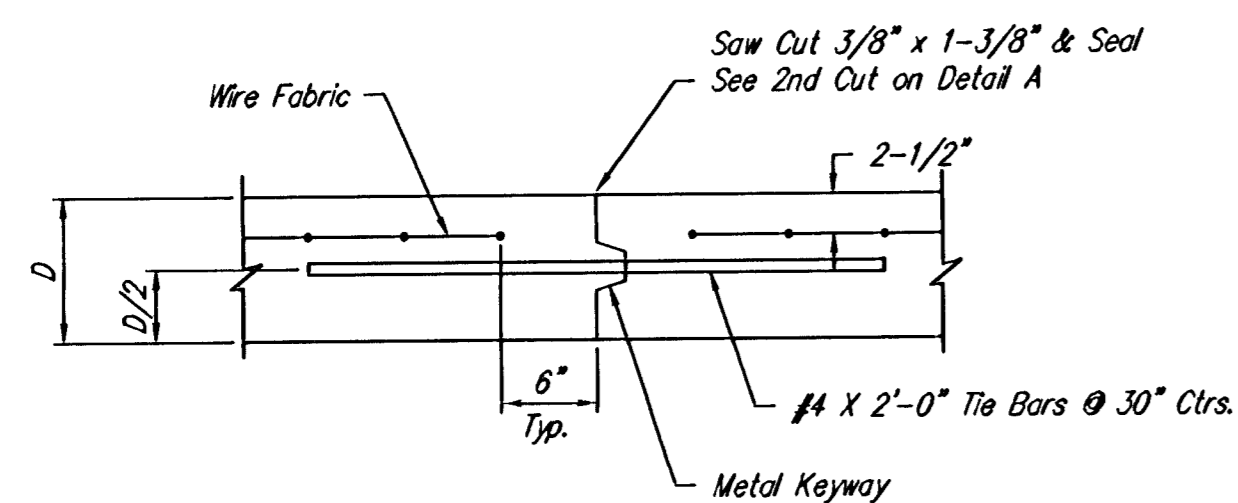
**KEYWAY DETAIL**



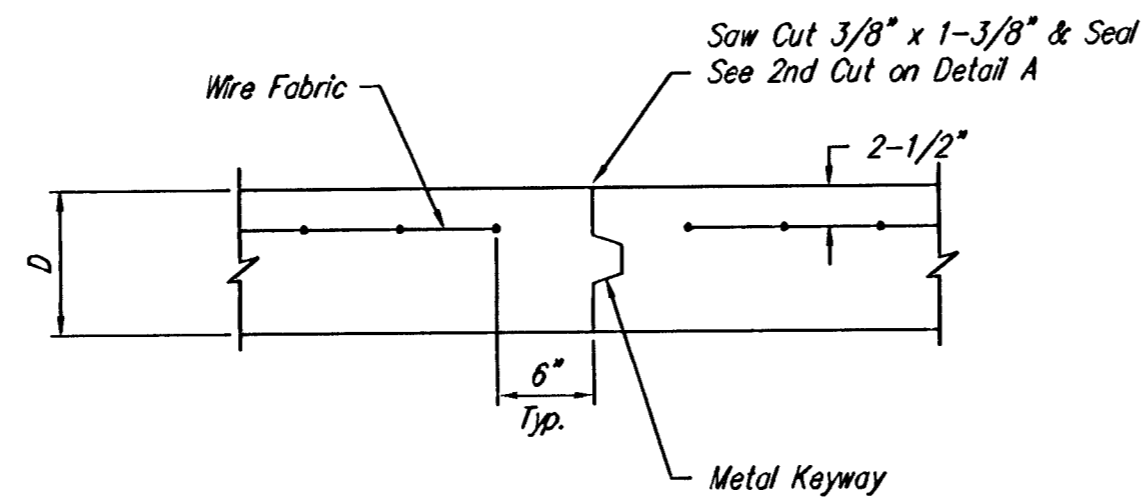
**CONTRACTION JOINT DETAIL (C.J.)**



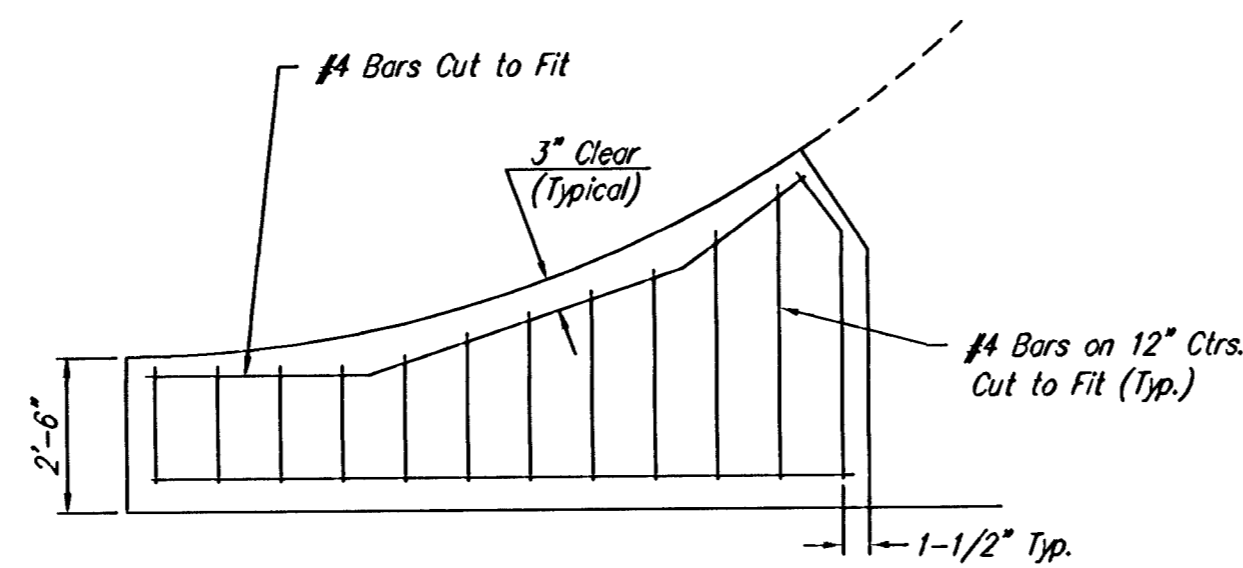
**LONGITUDINAL JOINT DETAIL (L.J.)**



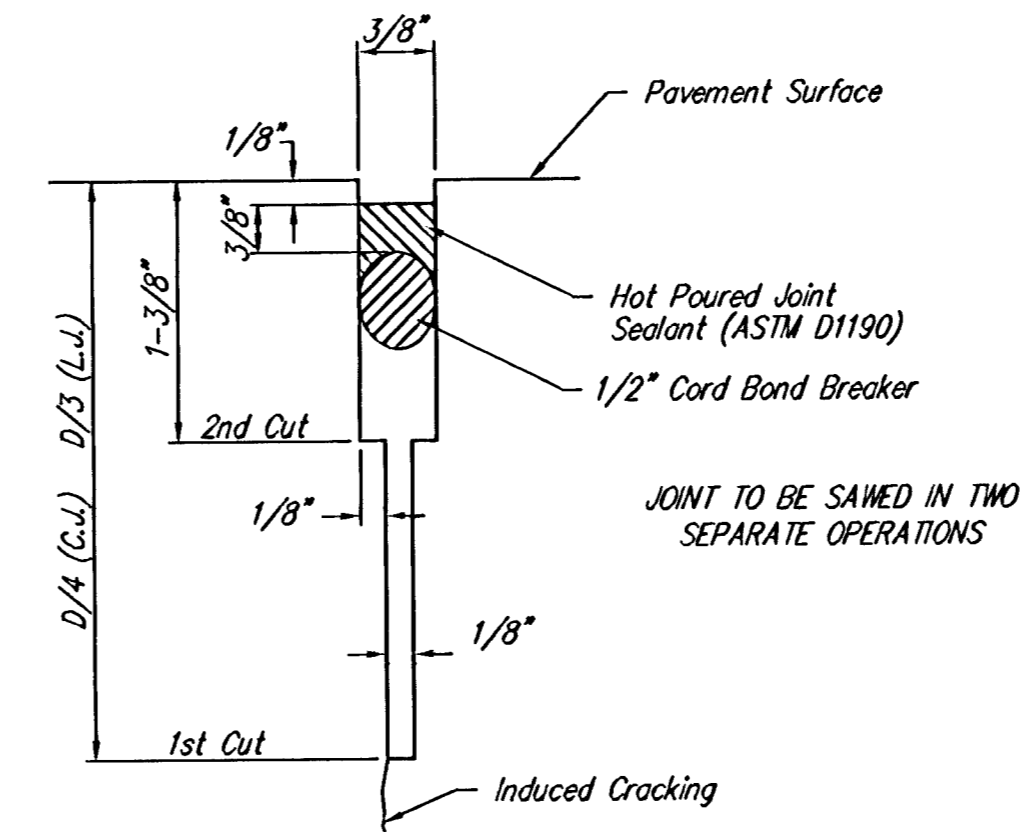
**OPTIONAL LONGITUDINAL JOINT DETAIL (L.J.)**



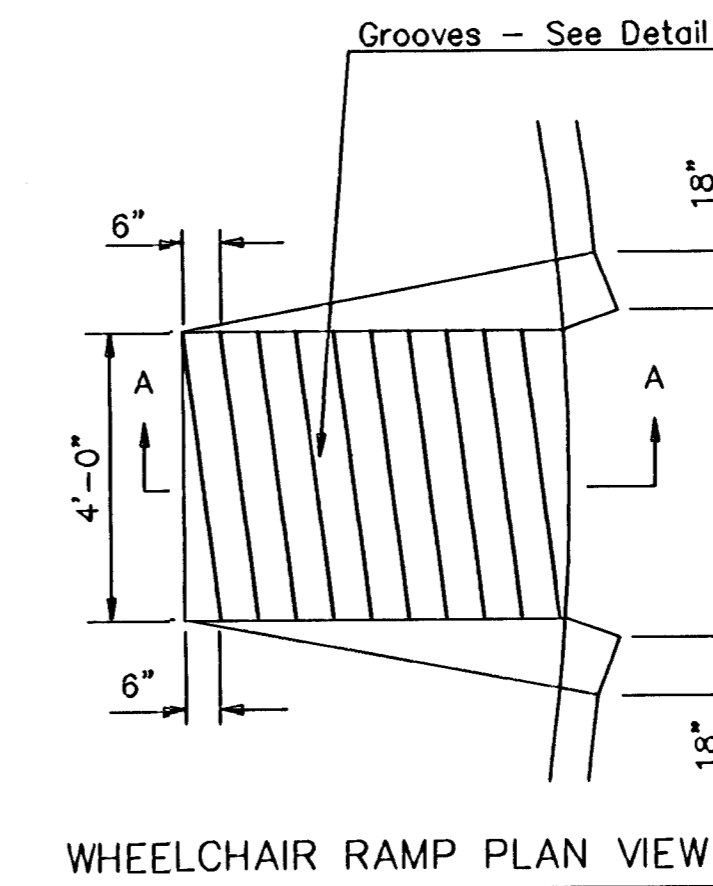
**OPTIONAL CONTRACTION JOINT**



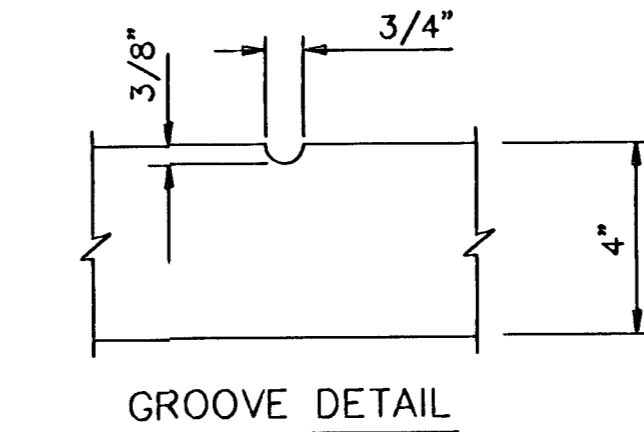
**WING REINFORCING DETAIL**



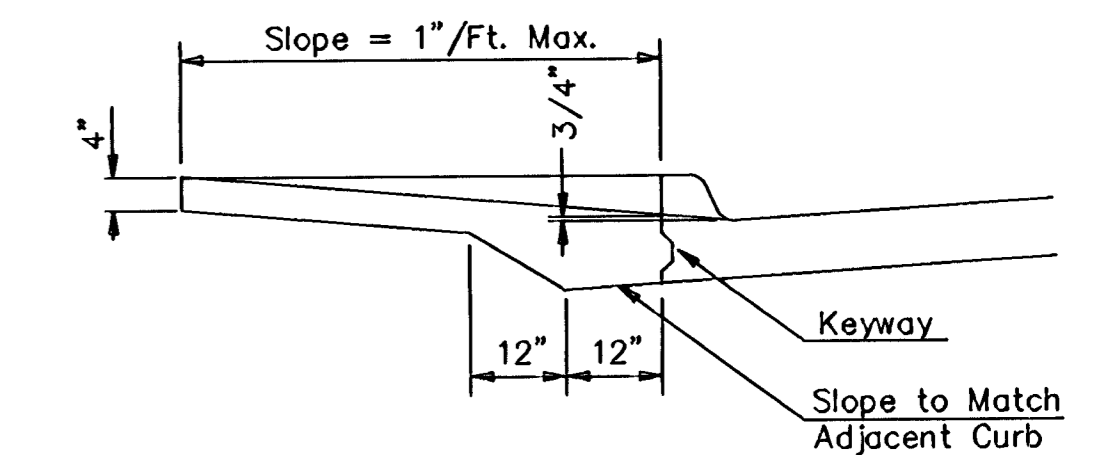
**SAW JOINT DETAIL**



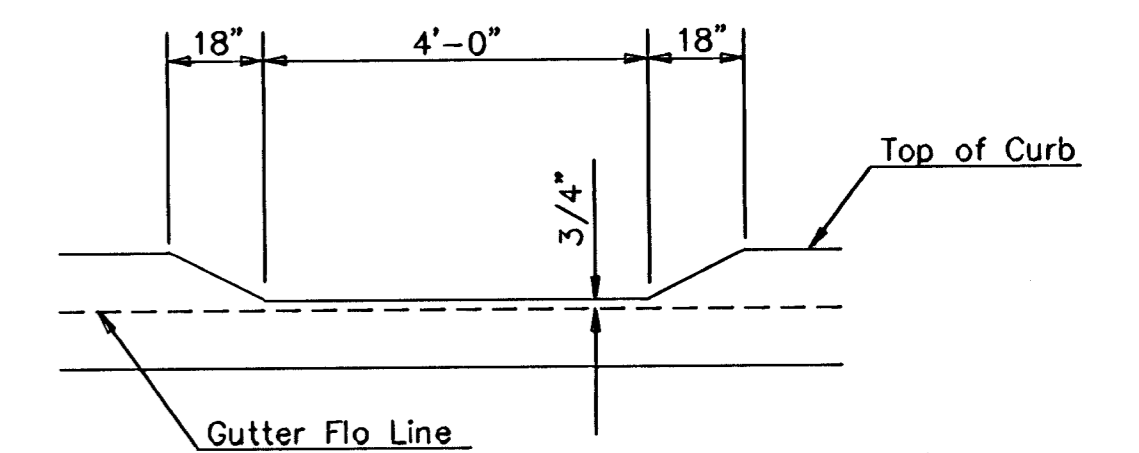
**WHEELCHAIR RAMP PLAN VIEW**



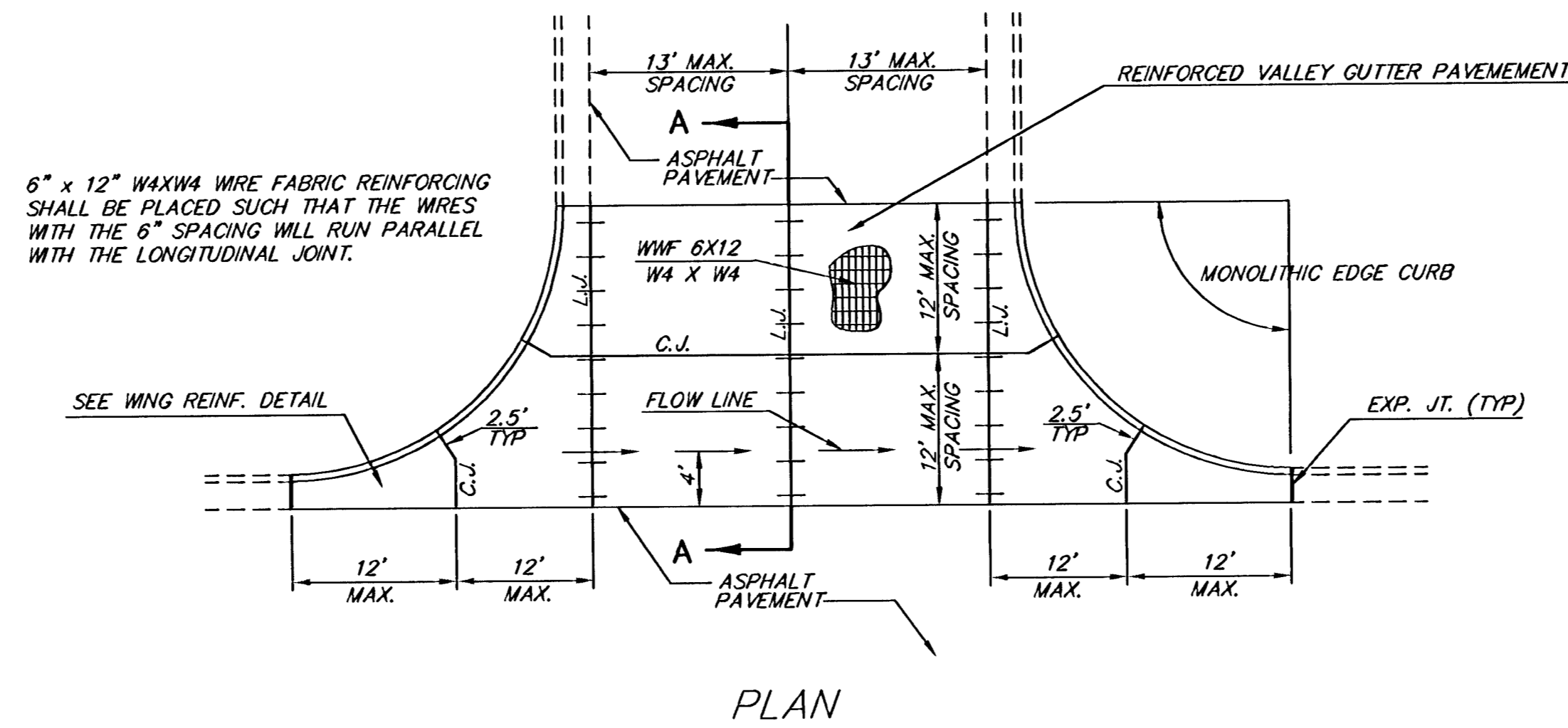
**GROOVE DETAIL**



**SECTION A-A**

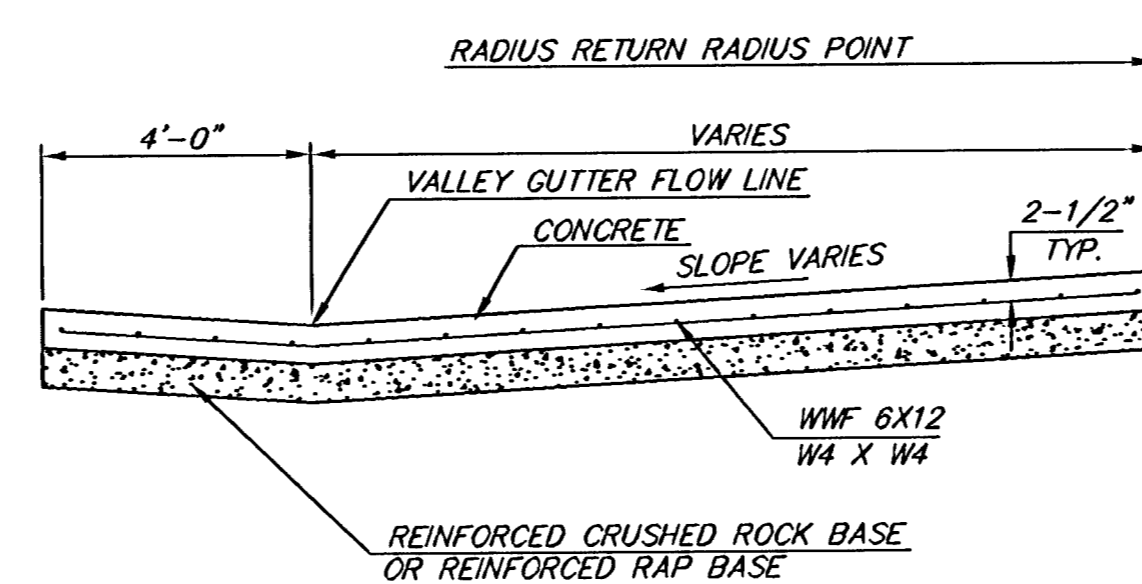


**DEPRESSED CURB DETAIL**



**PLAN**

6" x 12" W4XW4 WIRE FABRIC REINFORCING SHALL BE PLACED SUCH THAT THE WIRES WITH THE 6" SPACING WILL RUN PARALLEL WITH THE LONGITUDINAL JOINT.



**SECTION A-A**

**REINFORCED VALLEY GUTTER DETAIL**

**WHEELCHAIR RAMP DETAIL**

<p>THE CITY OF WICHITA</p> <p>CITY ENGINEER'S OFFICE CITY HALL - SEVENTH FLOOR 455 NORTH MAIN STREET WICHITA, KANSAS 67202 (316) 268-4501 (316) 268-4114 FAX</p>	<b>VALLEY GUTTER DETAILS</b>	
	<b>WHEELCHAIR RAMP DETAILS</b>	
	NEIL D. CABLE - CITY ENGINEER	
	PROJECT NUMBER 468-83575	INDEX CODE 765789
DATE MAR 96	SHEET 3 OF 24	