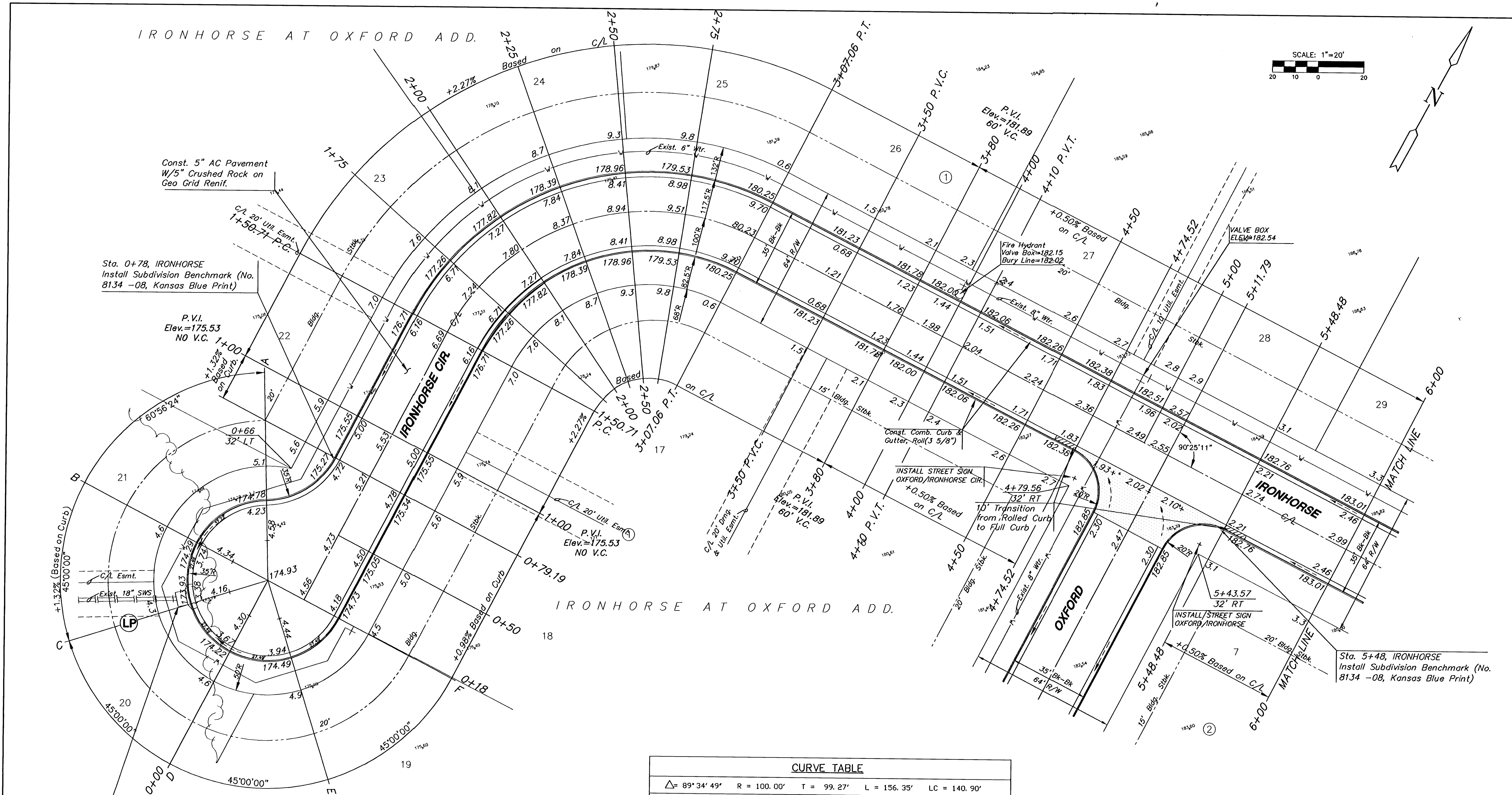
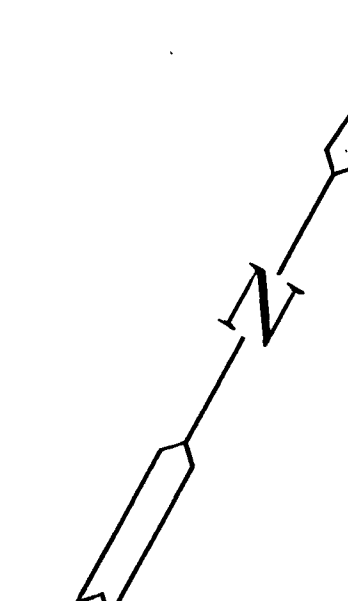
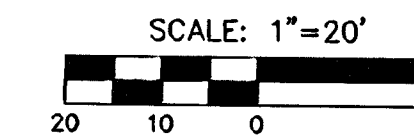


IRONHORSE AT OXFORD ADD.



Const. 5" AC Pavement
W/5" Crushed Rock on
Geo Grid Renif.

Sta. 0+78, IRONHORSE
Install Subdivision Benchmark (No.
8134 -08, Kansas Blue Print)

P.V.I.
Elev.=175.53
NO V.C.

Proposed Curb Inlet Top=173.93
Const. Inlet Hookup w/ Pvmf.
Install Inlet Sediment Barrier

P.V.I.
Elev.=181.89
60' V.C.

P.V.I.
Elev.=181.89
60' V.C.

Sta. 5+48, IRONHORSE
Install Subdivision Benchmark (No.
8134 -08, Kansas Blue Print)

SUBDIVISION BENCH MARKS

NO.	STREET AND STATION	FROM CL	DESCRIPTION	ELEVATIONS
1	IRONHORSE STA., 0+78	17.5' LT	TOP OF CURB AT END OF RETURN, IRONHORSE	
2	IRONHORSE STA., 5+48	17.5' LT	TOP OF CURB AT END OF RETURN, IRONHORSE	

NOTE: CONTRACTOR SHALL INSTALL SUBDIVISION BENCH MARKS ("FLAT SURVEY MARKERS NO. 8134-08 3" TOP DIAMETER" PROVIDED BY KANSAS BLUE PRINT CO., INC.) COSTS TO BE CONSIDERED SUBSIDIARY TO CONSTRUCTION OF COMBINED CURB AND GUTTER.

CURVE TABLE

$\Delta = 89^{\circ}34'49"$ R = 100.00' T = 99.27' L = 156.35' LC = 140.90'

CURVE DATA BASED ON CENTERLINE $\Delta / 2 = 44^{\circ}47'25"$

STATION	ARC	CHORD LENGTH		DEFLECTION	TOTAL DEFLECTION
		' Off LtCb	' Off RtCb		
1+50.71	-	-	-	00°00'00"	00°00'00"
1+75.00	24.29'	28.35'	20.11'	06°57'31"	06°57'31"
2+00.00	25.00'	29.17'	20.70'	07°09'43"	14°07'14"
2+25.00	25.00'	29.17'	20.70'	07°09'43"	21°16'57"
2+50.00	25.00'	29.17'	20.70'	07°09'43"	28°26'40"
2+75.00	25.00'	29.17'	20.70'	07°09'43"	35°36'23"
3+00.00	25.00'	29.17'	20.70'	07°09'43"	42°46'06"
3+07.06	7.06'	8.26'	5.86'	02°01'18"	44°47'25"

Def/Ft = 17.18873 Min.

IRONHORSE AT OXFORD ADDITION
PROJECT NAME

IRONHORSE CIR/IRONHORSE PAVING PLAN
SHEET TITLE

ASH DESIGN BY. RLH DRAWN BY. ASH CHECKED BY.

MARCH 2003 DATE 02173_E1 JOB NO. 5 / 24 SHEET/OF

H:\CIVIL\02173.DWG\PAV\02173_E1