

REMINGTON PLACE 2ND

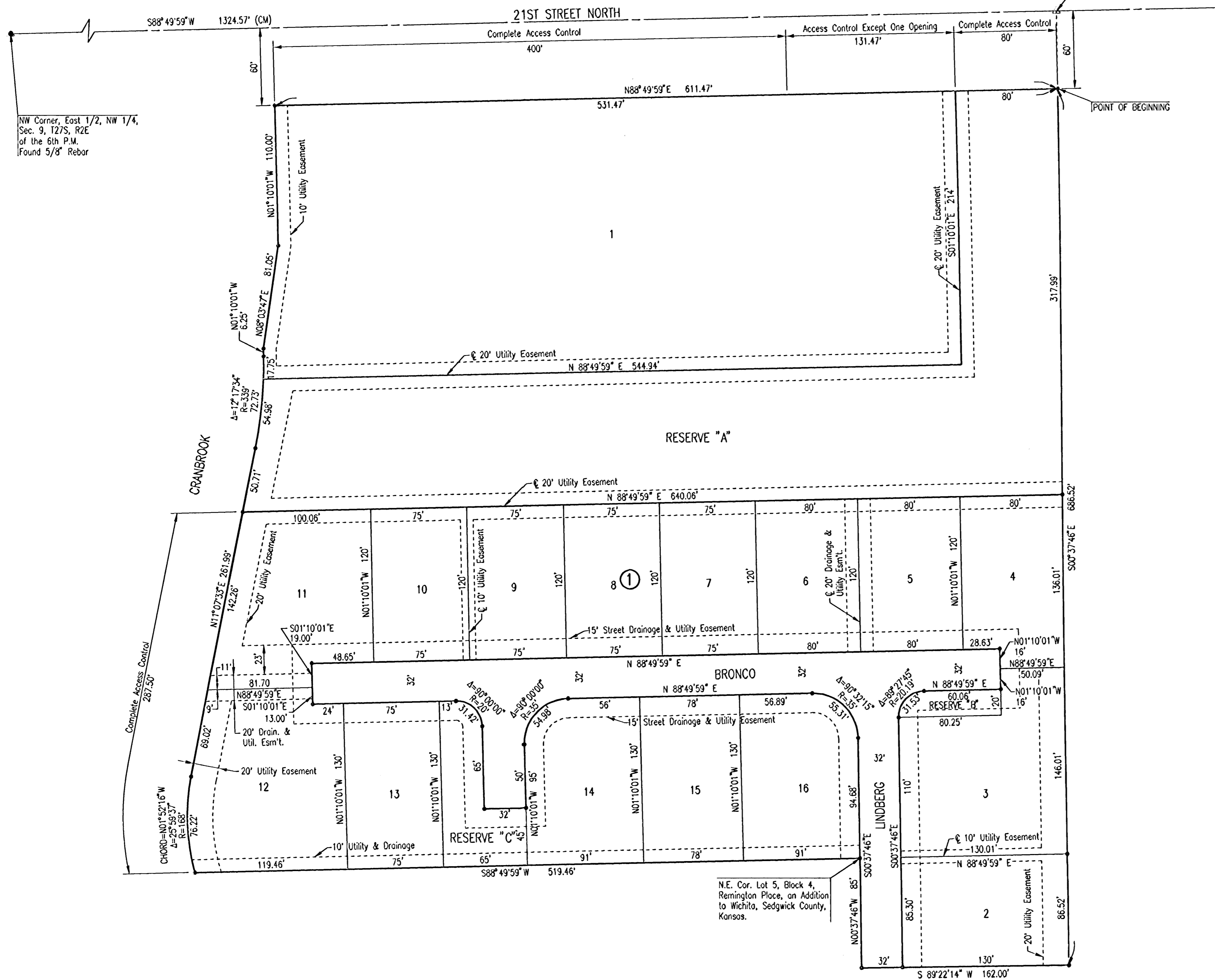
AN ADDITION TO WICHITA, SEDGWICK COUNTY, KANSAS

SCALE: 1" = 50'

• = 1/2" REBAR W/PEC CAP UNLESS OTHERWISE NOTED

B.M. #1 - CHISELED SQUARE ON CENTER OF CURB INLET ON THE SOUTH CURB OF
21ST ST. N., 30' SOUTH AND 40' WEST OF NORTH 1/4 CORNER
SECTION 9, 127S, R2E. ELEV. = 195.385 (City Datum)
ELEV. = 1382.785 N.G.V.D.

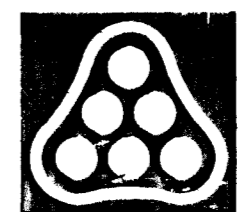
North 1/4 Corner,
Sec. 9, 127S, R2E
of the 6th P.M.
Found 1/2" Rebar



NW Corner, East 1/2, NW 1/4,
Sec. 9, 127S, R2E
of the 6th P.M.
Found 5/8" Rebar

N.E. Cor. Lot 5, Block 4,
Remington Place, an Addition
to Wichita, Sedgwick County,
Kansas.

DSNR: BER OPER ILS SCALE: 1"=50.00
Q:\2002\02662\003\RM2PLAT 03-14-2003 07:53:58 am



No.	Revision	By	Date
CITY OF WICHITA, KANSAS NEIL D. CABLE P.E. - CITY ENGINEER			
PLAT			
CITY OF WICHITA PROJECT NO. 472-83679			
Professional Engineering Consultants, P.A.			
303 S. TOPEKA • WICHITA, KANSAS 67202 316-262-2691 • FAX 316-262-3003			
Designed by	BER	Job No.	35-02662-3
Drawn by	DEP	Date	December 2002
			Sht. 2 of 10