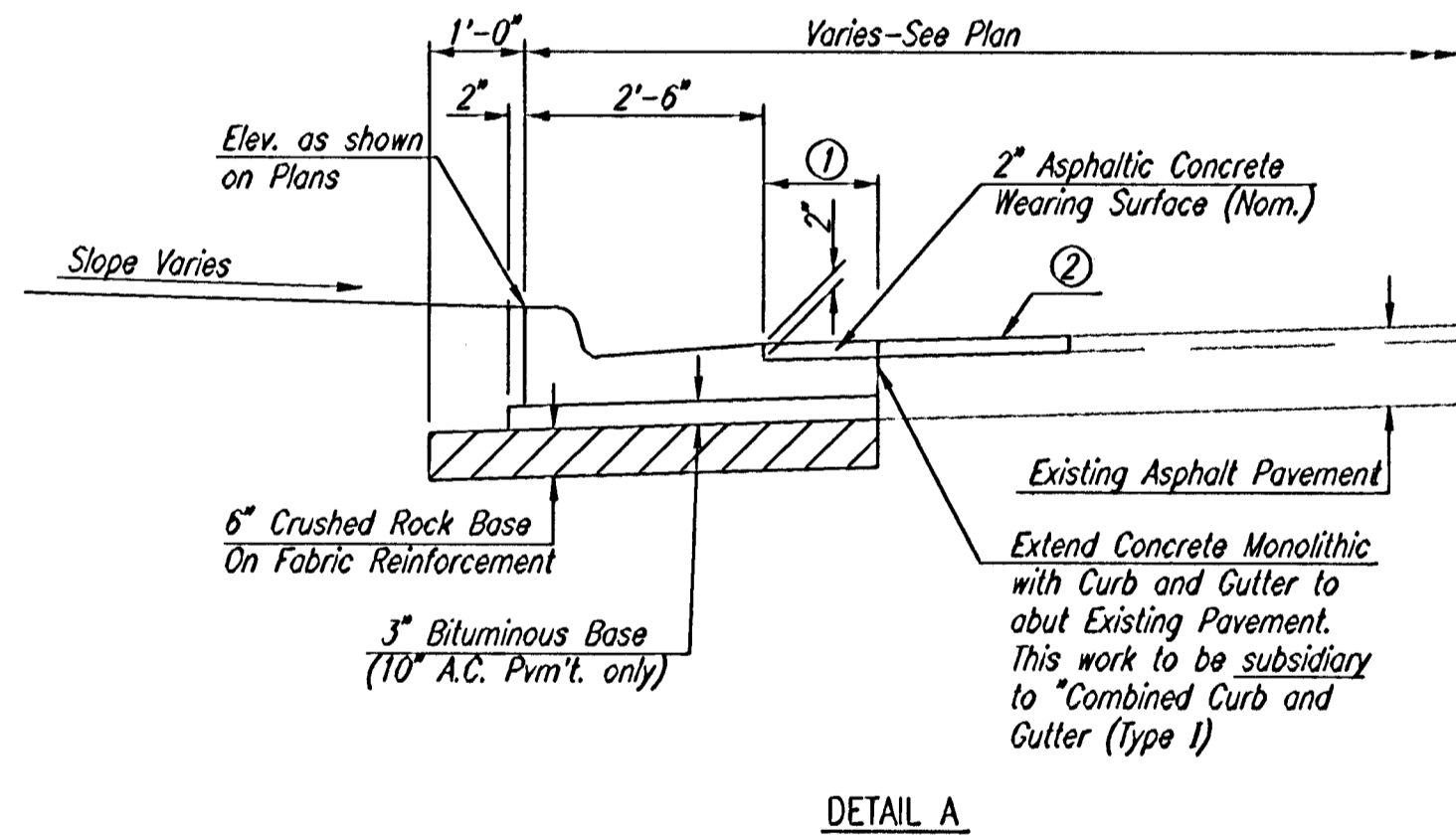
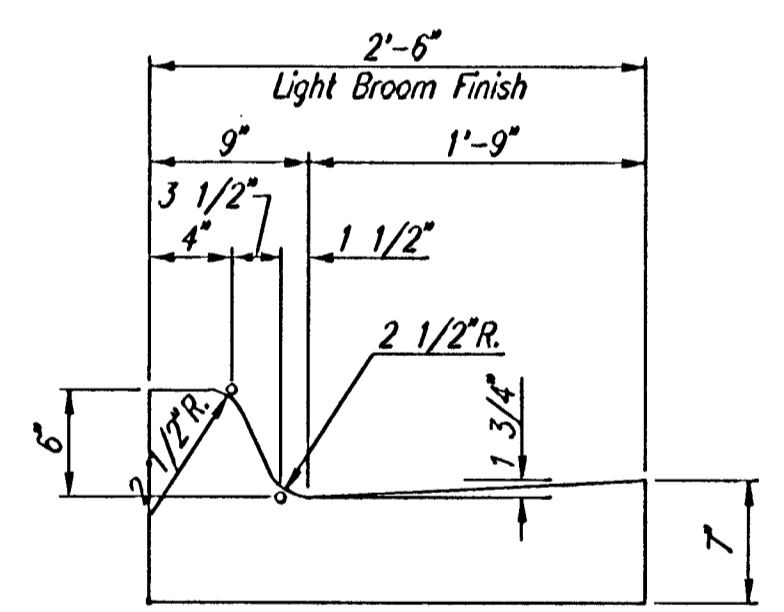


- ① Where this Dimension varies from 1'-6" to 0'-0" between Proposed High Edge and Existing Pavement.
- ② Saw Cut, Remove and Replace Surface Course, as necessary to provide a neat line. This work to be subsidiary to Asphalt Pavement.

TYPICAL SECTION  
STA. 99+75 TO STA. 101+79.48



DETAIL A



COMBINED CURB & GUTTER  
TYPE I

GENERAL NOTES

FABRIC BASE REINFORCEMENT SHALL BE B X 1100 GEOGRID AS MANUFACTURED BY TENSAR CORPORATION OR APPROVED EQUAL. FABRIC BASE REINFORCEMENT SHALL BE INSTALLED IN ACCORDANCE WITH MANUFACTURER'S RECOMMENDATIONS.

ROCK BASE IS TO BE COMPACTED AND SMOOTHED WITH A STEEL FACED ROLLER PRIOR TO PLACEMENT OF ASPHALT. TACK COAT WILL NOT BE APPLIED TO ROCK BASE.

A TACK COAT OF EMULSIFIED ASPHALT (SC-1H OR CSS-1H) SHALL BE APPLIED AT AN APPROXIMATE RATE OF 0.05 GALLONS PER SQUARE YARD BETWEEN EACH LIFT OF ASPHALTIC MATERIAL.

BITUMINOUS BASE AND ASPHALTIC CONCRETE WEARING SURFACE SHALL BE PLACED WITH A LAYDOWN MACHINE HAVING AUTOMATIC CONTROLS FOR LINE AND GRADE.

CONSTRUCTION JOINTS IN EACH LIFT SHALL BE STAGGERED A MINIMUM DISTANCE OF ONE (1) FOOT FROM JOINTS IN PRECEDING LIFTS AND PLACED SO THAT A JOINT WILL BE CONSTRUCTED ON THE CENTERLINE OF THE TOP LIFT.

DSNR: BER OPER: ILS SCALE: 1"=4'-00"  
 Q:\2002\02662\003\TYPSEC 03-14-2003 07:58:05 am

No.	Revision	By	Date
CITY OF WICHITA, KANSAS NEIL D. CABLE P.E. - CITY ENGINEER REMINGTON 2ND ADDITION <b>TYPICAL SECTIONS</b> CITY OF WICHITA PROJECT NO. 472-83679 <b>Professional Engineering Consultants, P.A.</b> 303 S. TOPEKA • WICHITA, KANSAS 67202 316-262-2691 • FAX 316-262-3003			
Designed by	BER	Job No.	35-02662-3
Drawn by	TLS	Date	February 2003
			Sht. 3 of 10