

CURVE #2
Curve Data Based on Centerline
Rad. = 100' Delta = 90°00'00" Tangent = 100.00'
Arc = 157.08' L.C. = 141.42' Def/Ft. = 17.18869 Min.

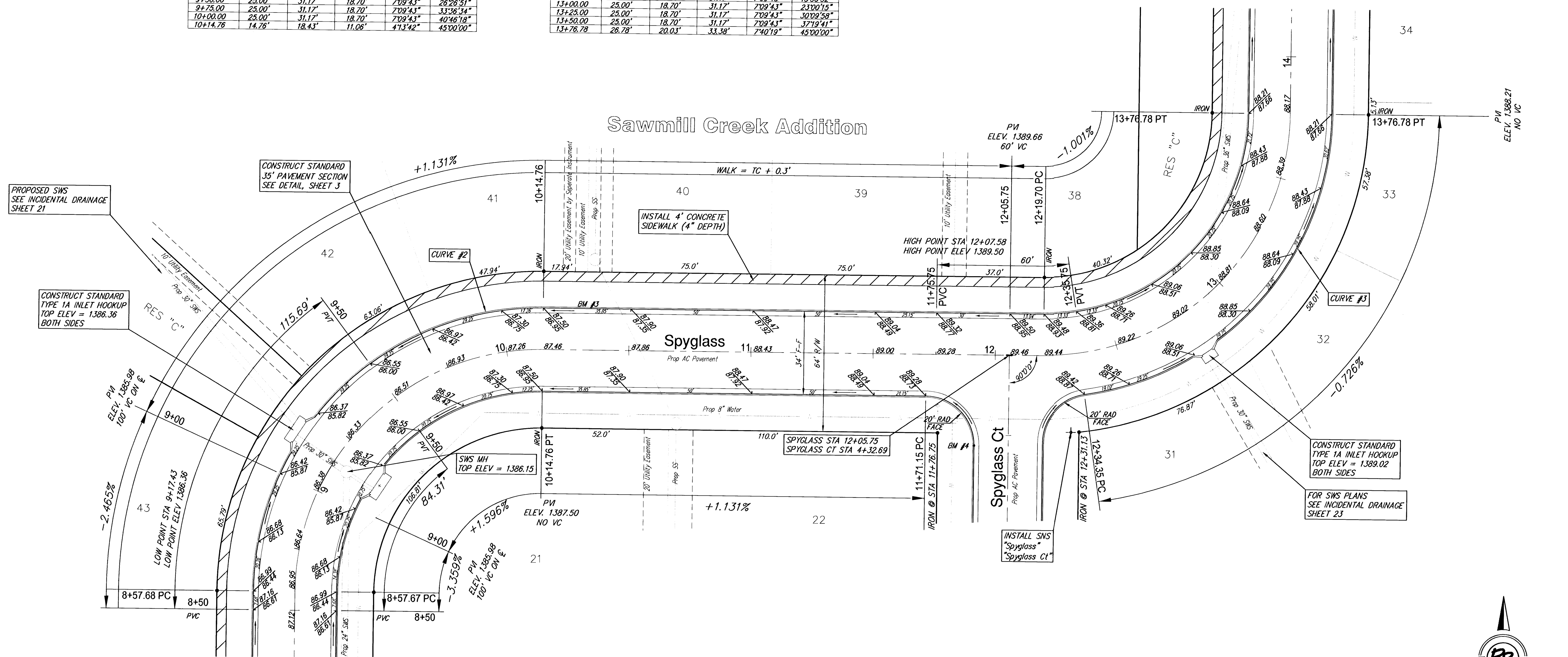
Station	Arc	FACE CHORD LENGTHS		Defl.	T. Defl.
		8 Lt.	8 Rt.		
8+57.68	-	-	-	0°00'00"	0°00'00"
8+75.00	17.32'	21.62'	12.97'	4°57'42"	4°57'42"
9+00.00	25.00'	31.17'	18.70'	7°09'43"	12°07'25"
9+25.00	25.00'	31.17'	18.70'	7°09'43"	19°17'08"
9+50.00	25.00'	31.17'	18.70'	7°09'43"	26°26'51"
9+75.00	25.00'	31.17'	18.70'	7°09'43"	33°36'34"
10+00.00	25.00'	31.17'	18.70'	7°09'43"	40°46'18"
10+14.76	14.76'	18.43'	11.06'	4°13'42"	45°00'00"

CURVE #3
Curve Data Based on Centerline
Rad. = 100' Delta = 90°00'00" Tangent = 100.00'
Arc = 157.08' L.C. = 141.42' Def/Ft. = 17.18869 Min.

Station	Arc	FACE CHORD LENGTHS		Defl.	T. Defl.
		8 Lt.	8 Rt.		
12+19.70	-	-	-	0°00'00"	0°00'00"
12+25.00	5.30'	3.97'	6.62'	1°31'06"	1°31'06"
12+50.00	25.00'	18.70'	31.17'	7°09'43"	8°40'49"
12+75.00	25.00'	18.70'	31.17'	7°09'43"	15°50'32"
13+00.00	25.00'	18.70'	31.17'	7°09'43"	23°00'15"
13+25.00	25.00'	18.70'	31.17'	7°09'43"	30°09'58"
13+50.00	25.00'	18.70'	31.17'	7°09'43"	37°19'41"
13+76.78	26.78'	20.03'	33.38'	7°40'19"	45°00'00"

Subdivision Bench Marks

No.	Street and Station	From CL	Description	Elevation
3	Spyglass Sta. 10+22	17.50' Lt	Top of N curb of Spyglass at W Lot Line, Lot 41 Block 7	
4	Spyglass Ct. Sta. 3+96	14.50' Lt	Top of W curb of Spyglass Ct S end of W return Spyglass	



PROPOSED SWS SEE INCIDENTAL DRAINAGE SHEET 21

CONSTRUCT STANDARD TYPE 1A INLET HOOKUP TOP ELEV = 1386.36 BOTH SIDES

CONSTRUCT STANDARD 35' PAVEMENT SECTION SEE DETAIL, SHEET 3

INSTALL 4' CONCRETE SIDEWALK (4" DEPTH)

HIGH POINT STA 12+07.58 HIGH POINT ELEV 1389.50

CONSTRUCT STANDARD TYPE 1A INLET HOOKUP TOP ELEV = 1389.02 BOTH SIDES

FOR SWS PLANS SEE INCIDENTAL DRAINAGE SHEET 23

INSTALL SWS "Spyglass" "Spyglass Ct"



SCALE 1" = 20'
IRON = •

NOTE: ROLL TYPE CURB AND GUTTER TO BE CONSTRUCTED ALONG PAVEMENT DEPICTED ON THIS SHEET

**SAWMILL CREEK ADDITION
SPYGLASS
WICHITA, KANSAS**

Ruggles & Bohm, P.A.
Engineering, Surveying, Land Planning

924 North Main
Wichita, Kansas 67203
www.rbkansas.com

(316) 264-8008
(316) 264-4621 fax
E-mail: info@rbkansas.com

DESIGN	CMB	SHEET 7 OF 10
DRAWN	EJG	
REVIEW		
UTILITY		
DRAWING FILE	PROJECT NUMBER	DATE
Paving [Spyglass 01]	472-83624	Nov. 26, 2002