

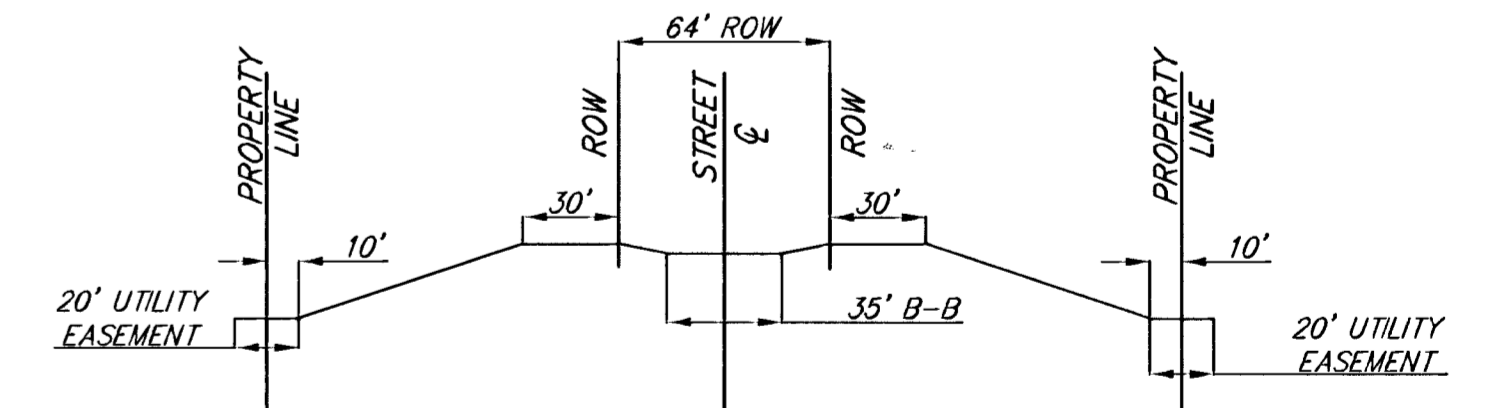
DO NOT GRADE EXISTING UTILITY EASEMENT

DRESS POND SLOPE TO FIX EROSION

FILL TO BE WASTED 3.5' DEEP IN AREA INDICATED

FILL TO BE WASTED 3.0' DEEP IN AREA INDICATED

WASTE EXCESS CUT 3.5' DEEP ON LOTS 35-45, BLOCK 5 AND 3' DEEP ON LOTS 2-6, BLOCK 5 AS INDICATED.
 MATCH PROPOSED GRADING TO EASEMENT GRADING DONE WITH SANITARY SEWER PROJECT #468-83486
 SEED, FERTILIZE AND MULCH DISTURBED LOTS BETWEEN RIGHT-OF-WAY AND REAR-YARD UTILITY EASEMENTS.



TYPICAL LOT SECTION

SITE EARTHWORK TOTALS	
FILL	11500 YDS
CUT	20300 YDS
TOTAL	8800 YDS CUT

--- CONSTRUCTION LIMITS



SCALE: 1" = 60'

Sawmill Creek Phase 2
 Site Earthwork
 WICHITA, KANSAS

Ruggles & Bohm, P.A.
 Engineering, Surveying, Land Planning
 924 North Main (316) 284-8008
 Wichita, Kansas 67203 (316) 284-4621 fax
 www.rbkansas.com E-mail: info@rbkansas.com

DESIGN	CMB	SHEET 13 OF 40
DRAWN	EJG	
REVIEW		
UTILITY		
DRAWING FILE	PROJECT NUMBER	DATE
Details {Site Grading 01}	472-83624	Nov. 28, 2002