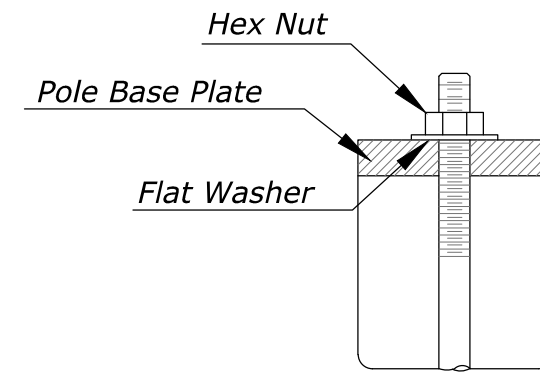
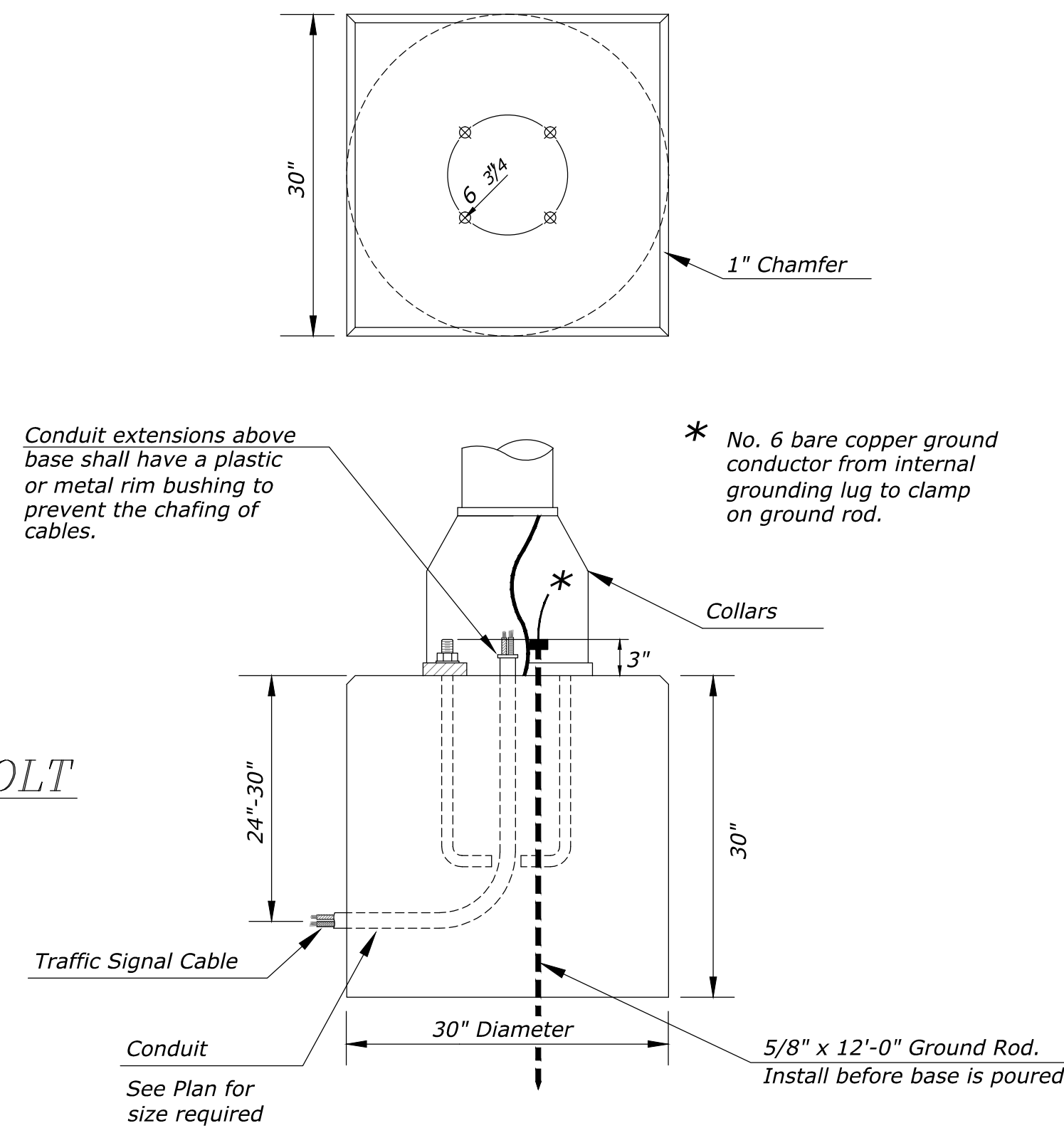


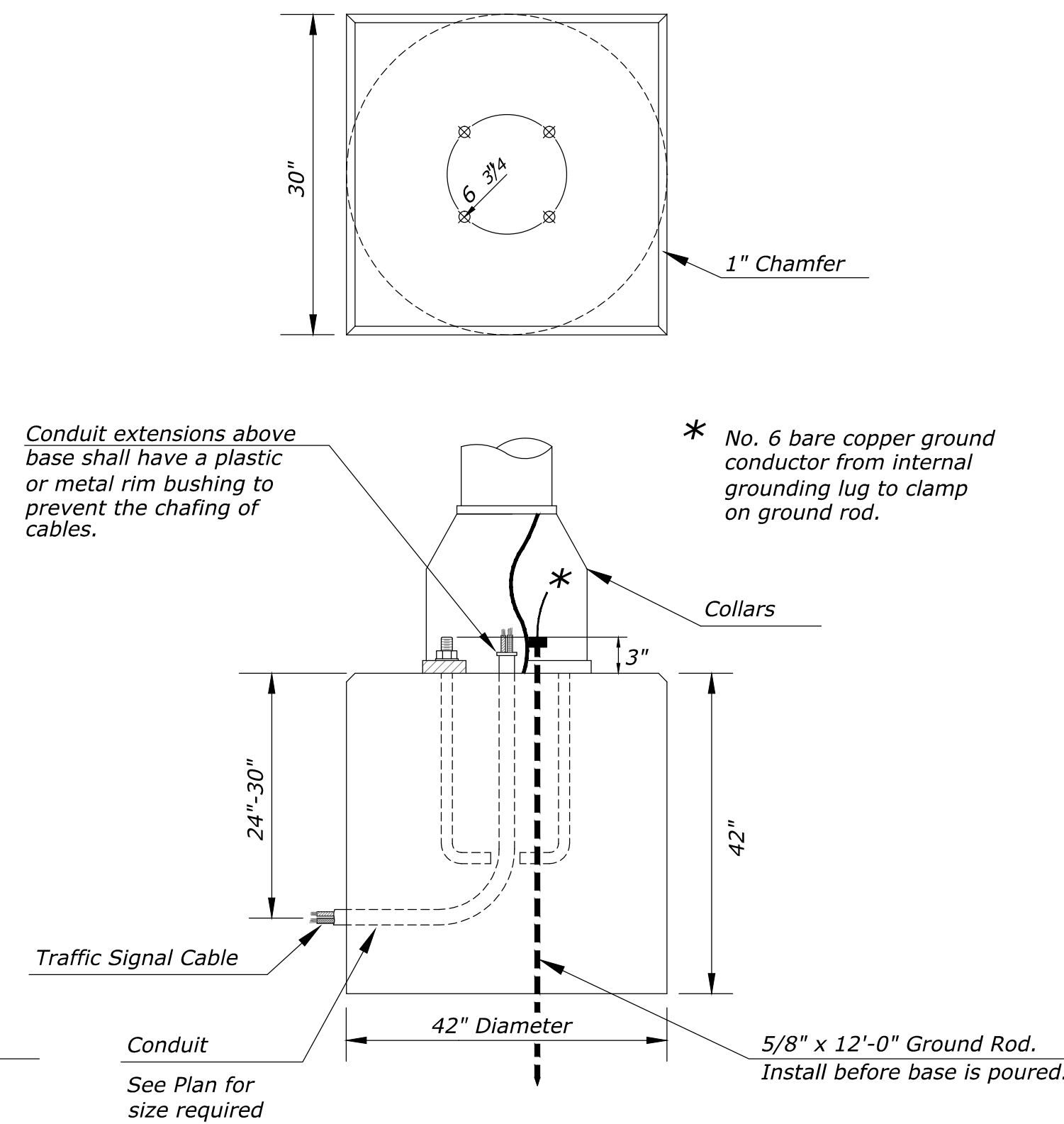
Use Keystone "No-Weld Number 1 Anti-Seize Compound" on all bolts & nuts.



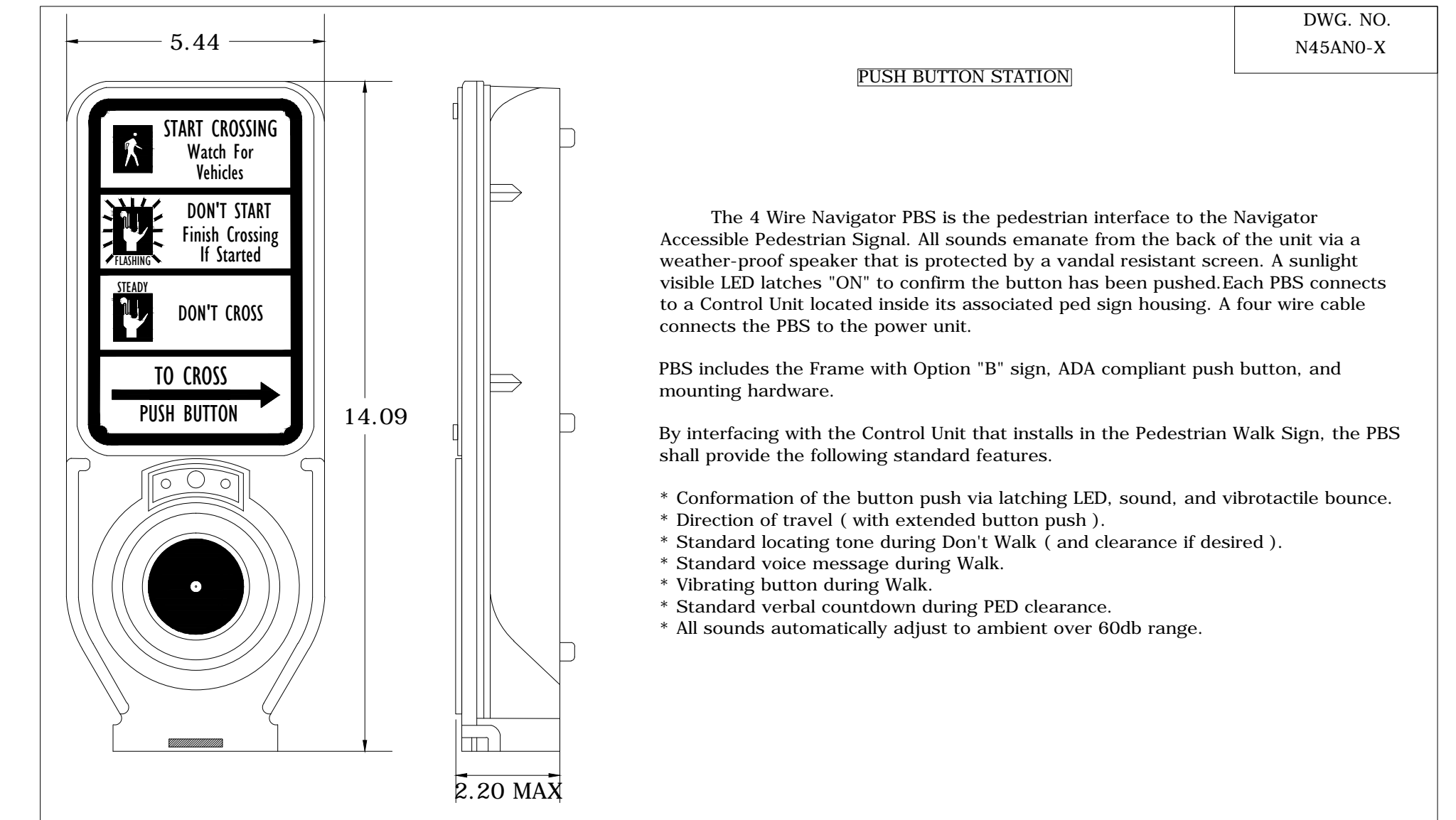
**ANCHOR BOLT  
DETAIL**



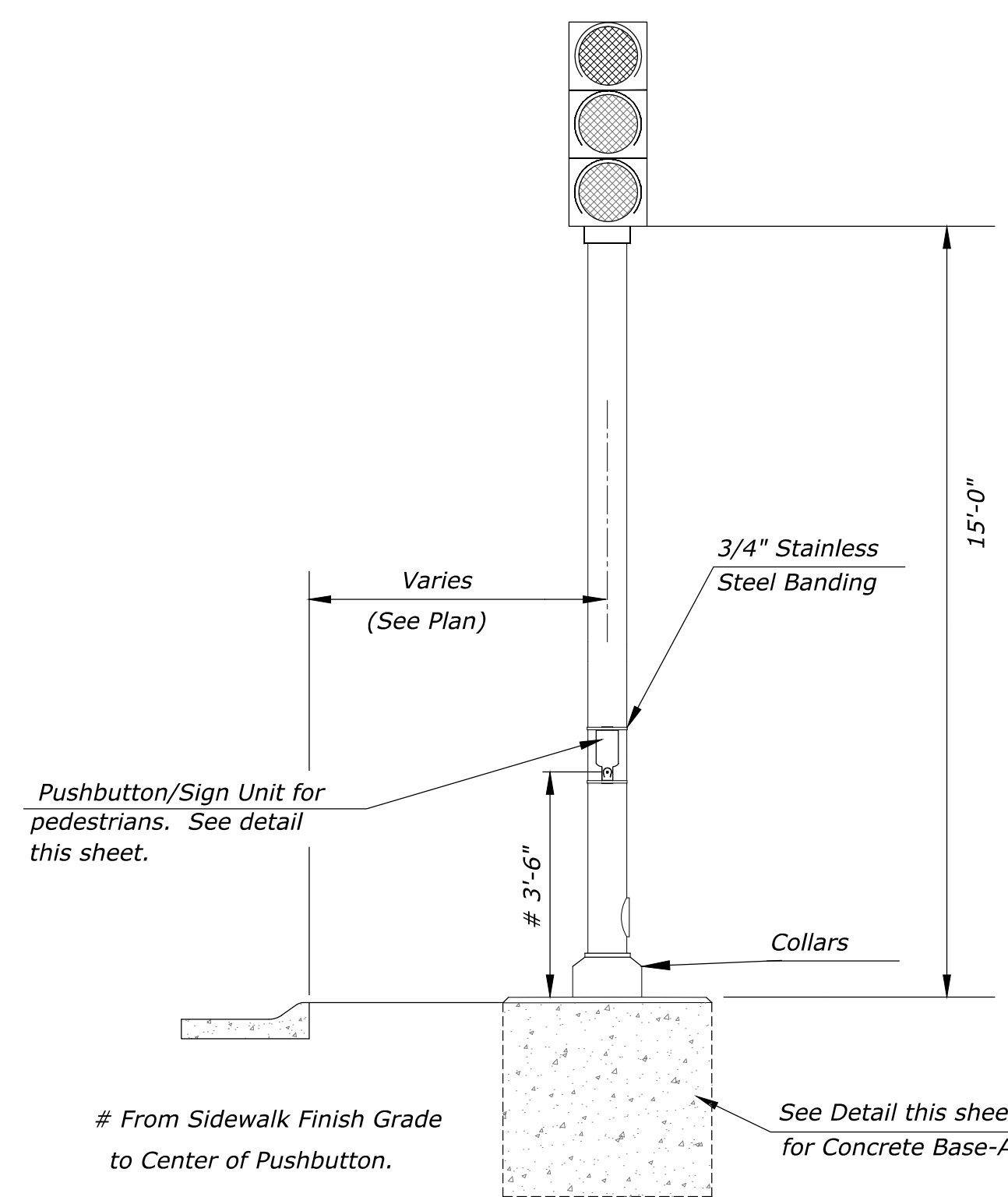
**CONCRETE BASE-A DETAIL**



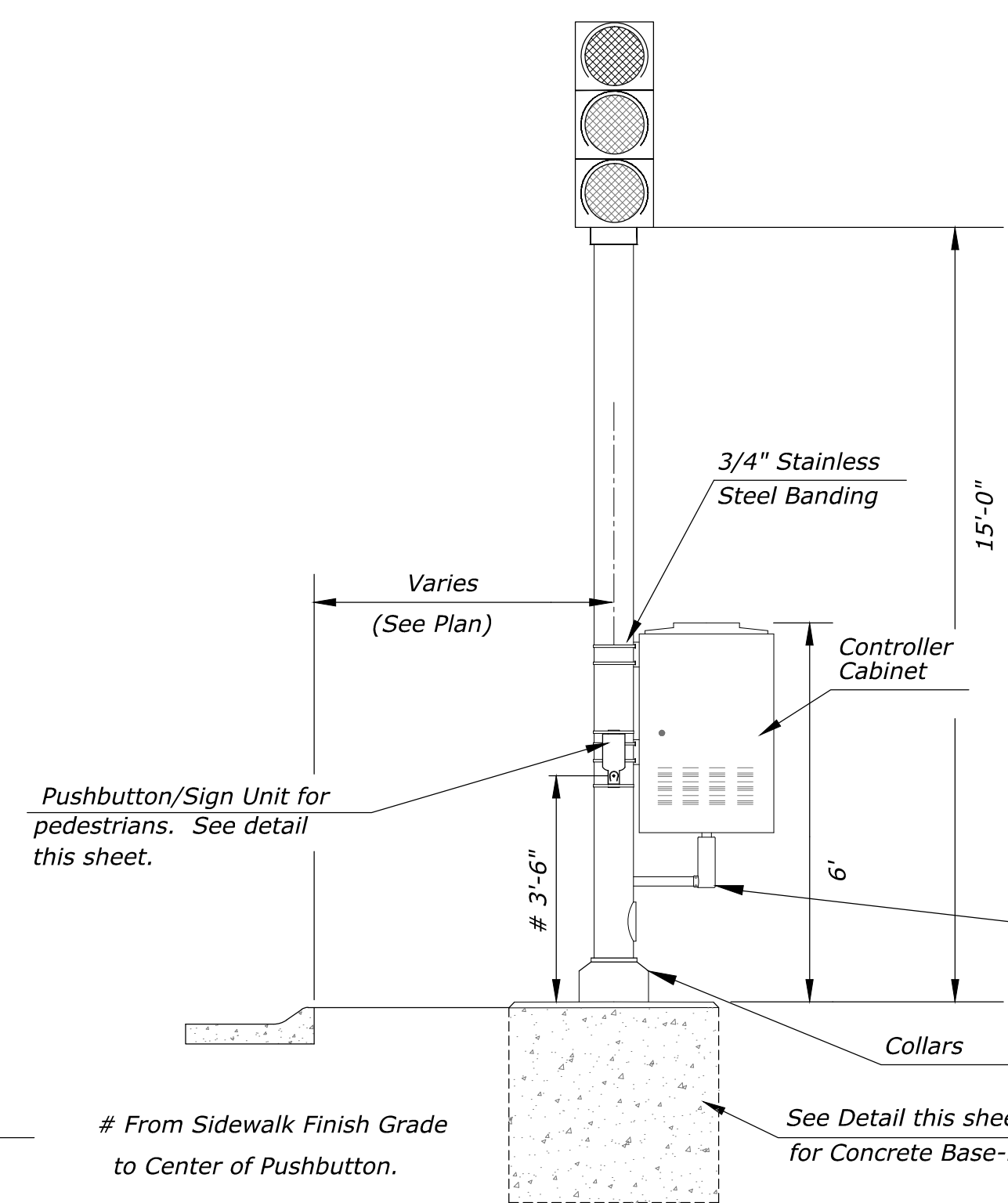
**CONCRETE BASE-B DETAIL FOR  
TRAFFIC SIGNAL PEDESTAL  
WITH CONTROLLER CABINET**



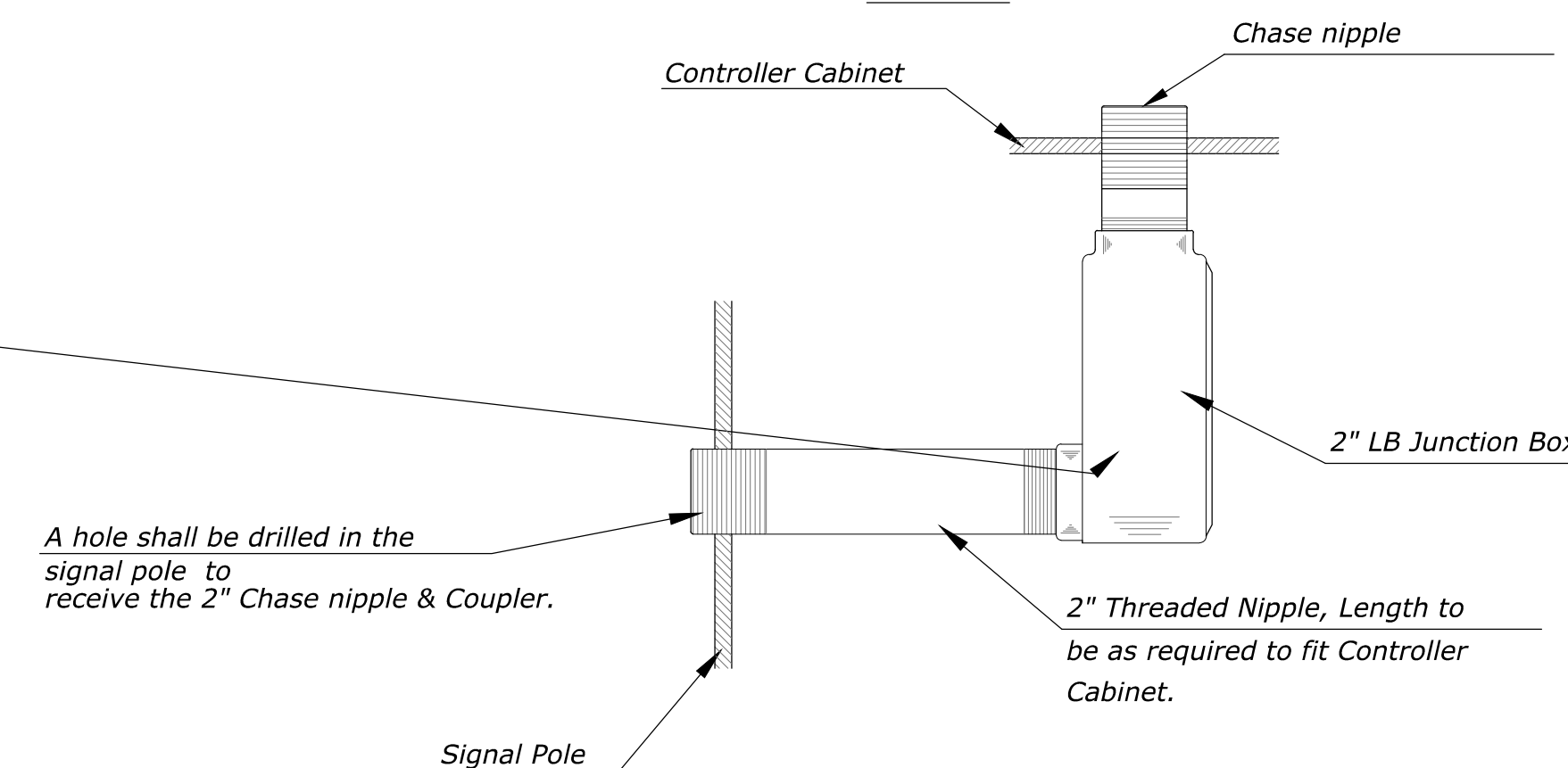
**PEDESTRIAN PUSHBUTTON/SIGN  
UNIT DETAIL**



**TRAFFIC SIGNAL PEDESTAL**



**TRAFFIC SIGNAL PEDESTAL  
WITH CONTROLLER CABINET**



A hole shall be drilled in the signal pole to receive the 2" Chase nipple & Coupler.

2" Threaded Nipple, Length to be as required to fit Controller Cabinet.

**PUSH BUTTON STATION**

Message and Sound options include:

- Locating tone
- Verbal Street Name (Example: Crossing Main at Central)
- All features field selectable using a Configurator.

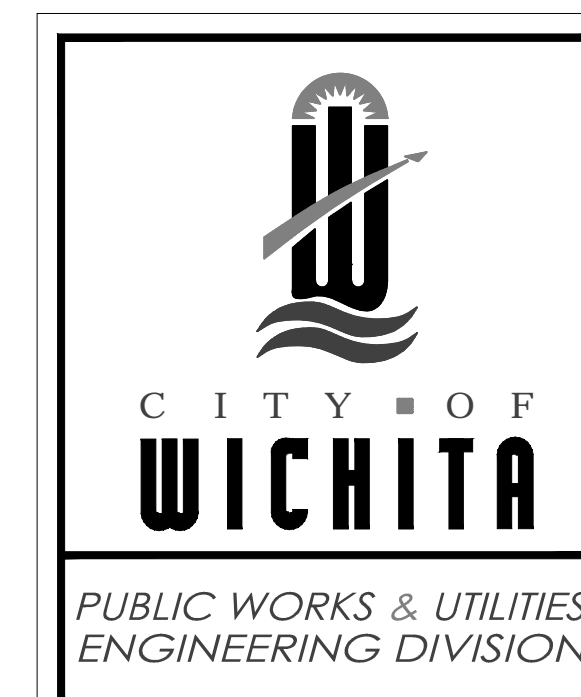
Construction:

- Die-cast aluminum, powder coated Black in color.
- Street Name in Braille in the directional arrow of the sign.
- Option "B" signing option.

Push button:

- ADA compliant
- Raised tactile arrow on the button
- Solid State switch rated at a Minimum of 20 million actuations

**PLATE MARKING OPTIONS**



REVISED: AUGUST 2014

**SIGNAL PEDESTAL & BASE  
WITH ADA PUSH BUTTON**

TRAFFIC ENGINEER  
**BRIAN A. COON P.E.**

PROJECT NUMBER	OCA NUMBER	DATE
CITY ENGINEER'S OFFICE CITY HALL - SEVENTH FLOOR 455 NORTH MAIN STREET WICHITA, KANSAS 67202-1620 (316) 268-4501		SHEET